

Flush Drywall Receptacle Mount [Luxe]

- Designed for light switches, outlets, ethernet and phone receptacles.

NOTE: instructions below illustrate the install of an outlet, install method is the same for all receptacle types

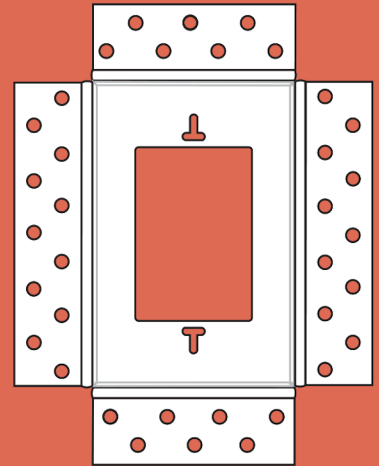
- Compatible with any screwless wall plate.

*Purchase wall plate separately. Recommended Brands: Leviton, Lutron, Eaton

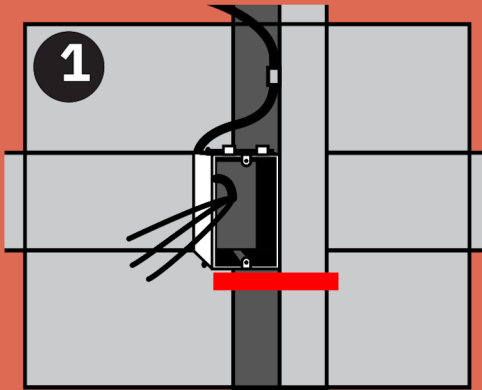
* Some preparation to receptacle box is required (see step 1).

- Best done prior to drywall installation.

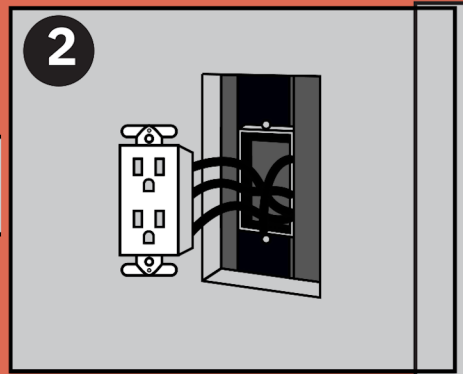
*Requires professional drywall taping install



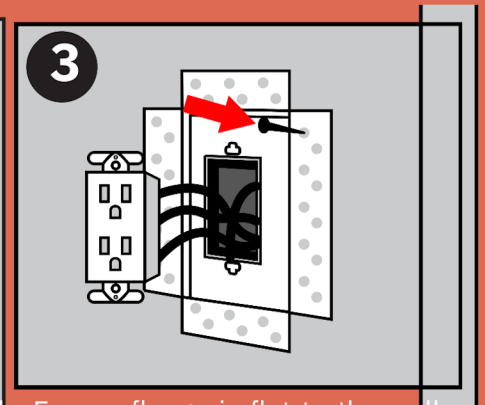
Install Guide



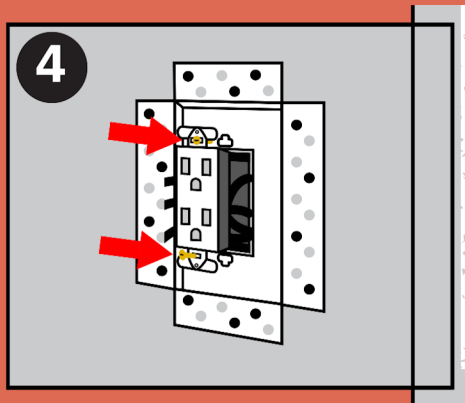
1 Ensure the receptacle box is installed flush to the studs.



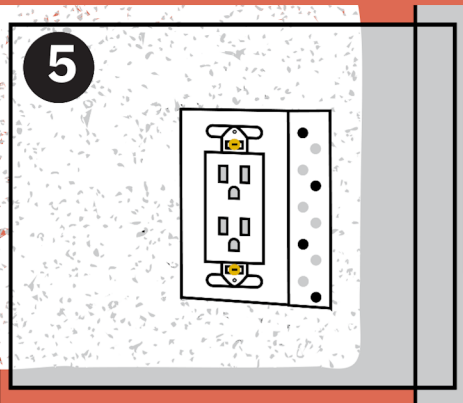
2 Cut opening in drywall to fit Drywall Mount.



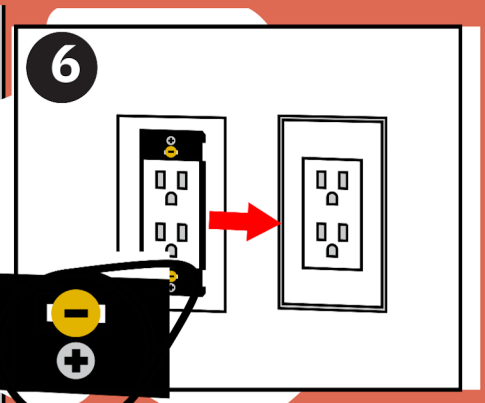
3 Ensure flange is flat to the wall. Use drywall screws to fasten as needed.



4 Fasten the outlet to the receptacle box through the "T" shaped holes in the Drywall Mount.



5 Tape, mud to cover flange. Once dry, sand. Repeat as needed.



6 Fasten the screwless wall plate frame and snap on wall plate.

*Wall plate and wall plate frame not included.



Visit www.ariavent.com for more information

Flush Drywall Receptacle Mount [Luxe]

- Designed for light switches, outlets, ethernet and phone receptacles.

NOTE: instructions below illustrate the install of an outlet, install method is the same for all receptacle types

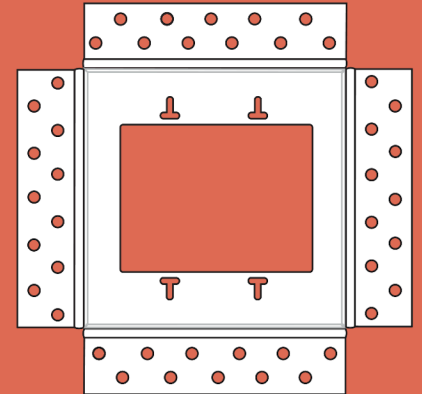
- Compatible with any screwless wall plate.

*Purchase wall plate separately. Recommended Brands: Leviton, Lutron, Eaton

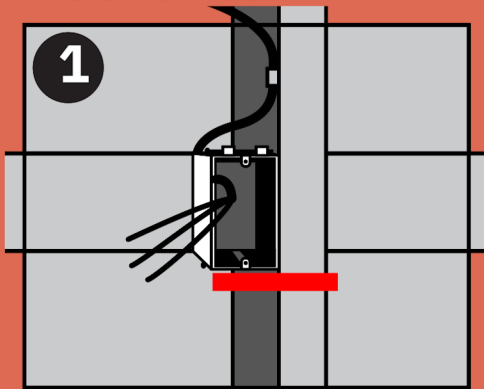
* Some preparation to receptacle box is required (see step 1).

- Best done prior to drywall installation.

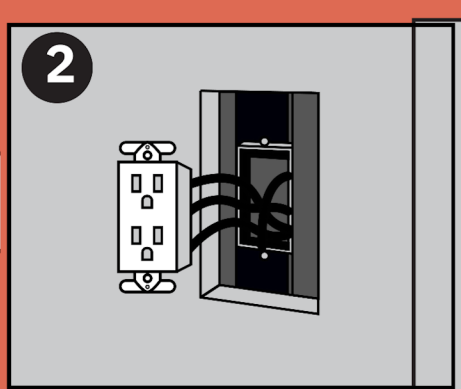
*Requires professional drywall taping install



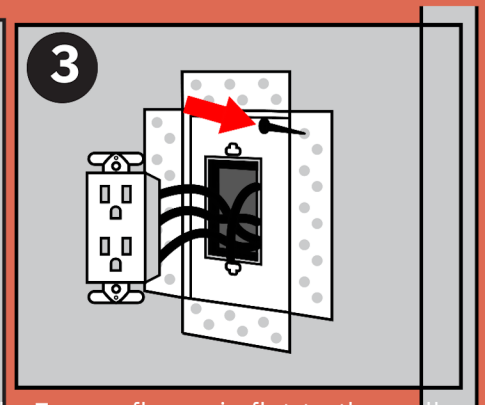
Install Guide



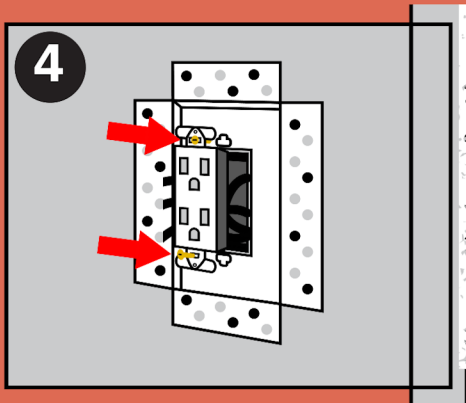
1 Ensure the receptacle box is installed flush to the studs.



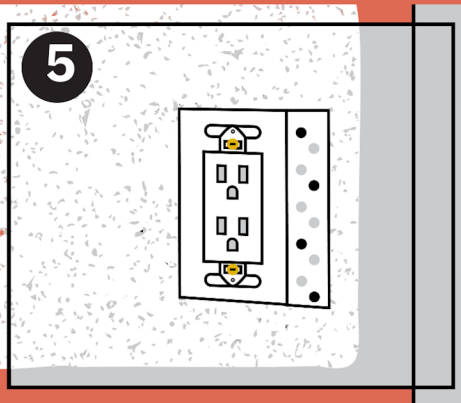
2 Cut opening in drywall to fit Drywall Mount.



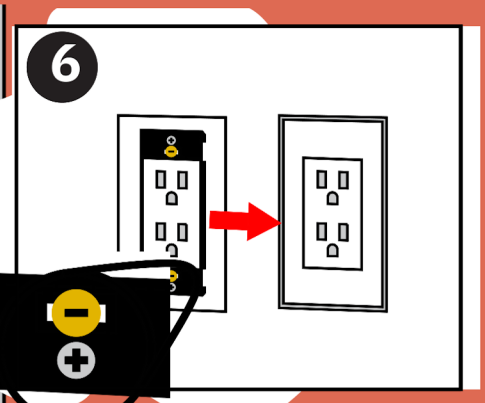
3 Ensure flange is flat to the wall. Use drywall screws to fasten as needed.



4 Fasten the outlet to the receptacle box through the "T" shaped holes in the Drywall Mount.



5 Tape, mud to cover flange. Once dry, sand. Repeat as needed.



6 Fasten the screwless wall plate frame and snap on wall plate.

*Wall plate and wall plate frame not included.



Visit www.ariavent.com for more information



6 28504 05547 2
2GANGPLT