



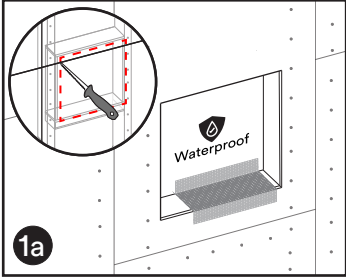
No-See Shower Niche - 12" x 12"

Materials Needed

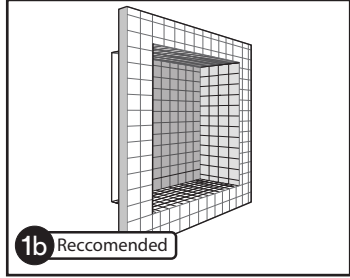
- Pre-cut 10¹⁵/₁₆" x 10¹⁵/₁₆" piece of surface material for tray insert
- Bonding material (will vary depending on surface)



Ensure all protective plastic film is removed prior to use.



1a
Prep and waterproof a minimum 12" x 12" niche.

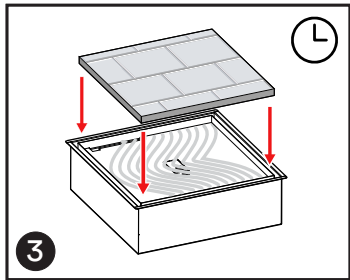


1b Recommended

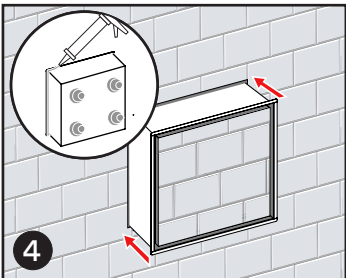
Install compatible 12" x 12" waterproof shower niche system. See product specs for details.



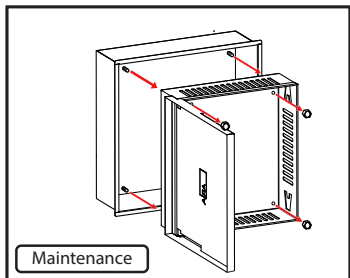
2
Install tile to surrounding wall. DO NOT tile within the niche.



3
Apply silicone in tray. Set pre-cut tray insert into place. Allow time to cure.



4
Apply silicone around the underside of the frame and 4 large masses on the back. Fit into place.



Maintenance
For maintenance purposes, acorn bolts can be removed to access the No-See Shower Niche base.

Additional Support

support@ariavent.com / www.ariavent.com / @ariavent

Patent information

www.ariavent.com/pages/patents