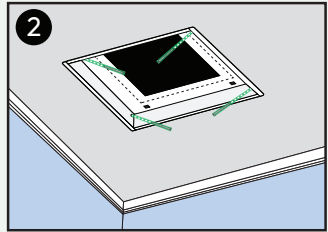
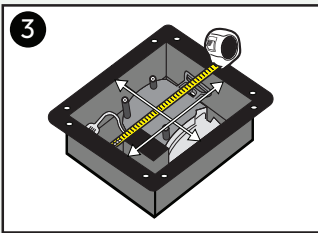


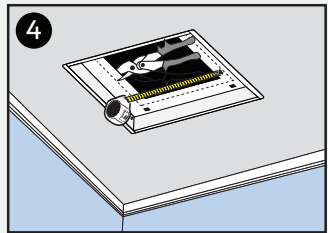
Dry-fit **Base** into vent opening.



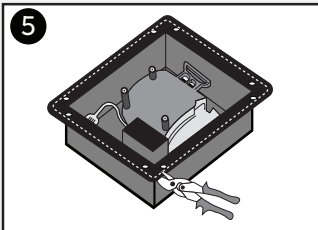
Ensure flange is flat to the wall.
Use screws to fasten as needed.



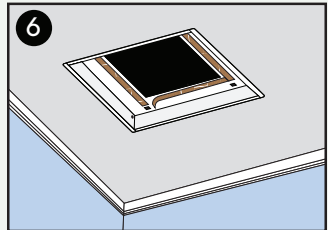
Measure base of ventilation fan to check if adjustments need to be made to the **Framed Exhaust Mount** opening.



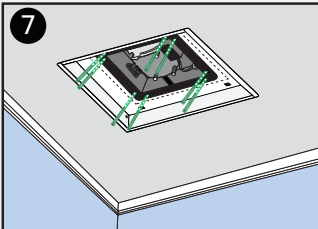
Measure **Body**. If adjustment is necessary, cut along perforated edges according to sizes in step #2.



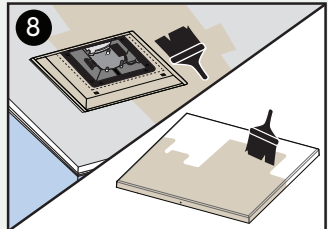
Some fan flanges can obstruct holes needed to slide on the **Tray** (step 8). If this is the case, trim flanges of fan.



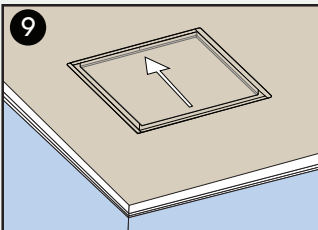
Peel and stick provided sound dampening strips along the edges of the opening.



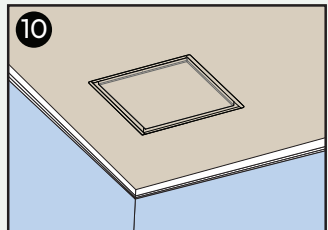
Insert and fasten fan with screws. Sound damping strips should be sandwiched between fan and **Body**.



Paint inside of the **Body** and **Tray** to match ceiling colour. Do not paint fan.



Insert and slide **Tray** into place. Use hole on the side of the **Tray** as a guide.



Enjoy!

Additional Support

support@ariavent.com / www.ariavent.com

www.ariavent.com/pages/patents