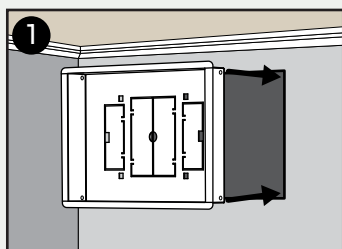


## Materials Needed

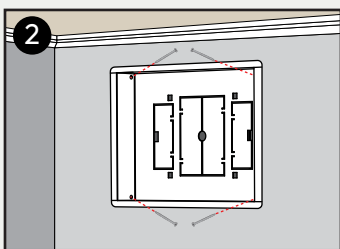
- Screw driver or drill
- Mounting screws included in box

### \*IMPORTANT\*

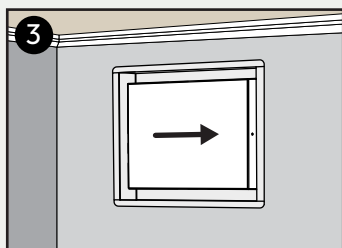
- For wall and ceiling surfaces ONLY
- DO NOT Install on floors!



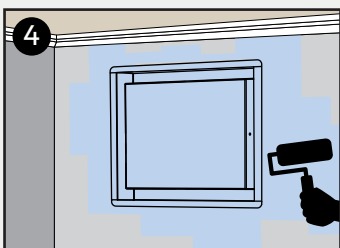
Dry-fit **Base** into duct opening.



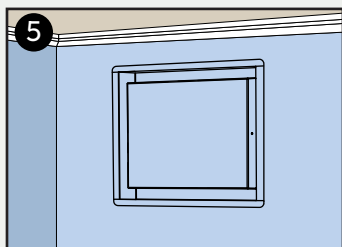
Ensure flange is flat to the wall.  
Use provided screws to fasten.



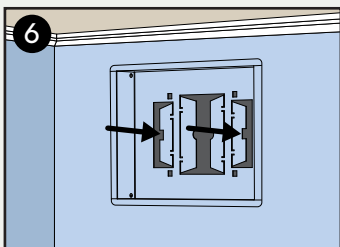
Insert **Tray** and slide into place until secured.



Paint to match surrounding surfaces.  
\*Can paint inner surfaces as well, or use wallpaper.



Enjoy!



To adjust airflow, remove **Tray** and bend dampers located in **Base** to desired position.

## \*Control Air Flow\*

Slide to remove Tray and adjust dampers open and closed. For optimal air flow, push flanges past 90°

## Additional Support

support@ariavent.com / www.ariavent.com

## Patent Information

www.ariavent.com/pages/patents

