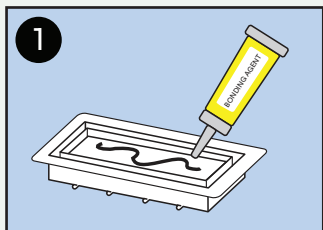


Materials Needed

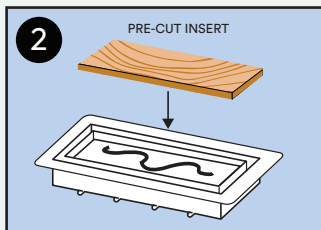
- Pre-cut piece of surface material for tray insert.
(Size will vary for vent sizes).
- Bonding material (will vary for flooring materials).

NOTE

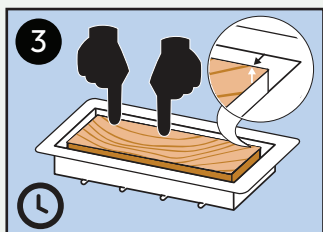
- If duct opening is larger than the Base of the vent, use additional screws to add strength.



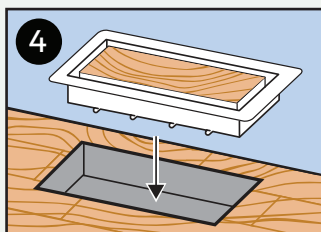
1 Apply adhesive bond in **Tray**.



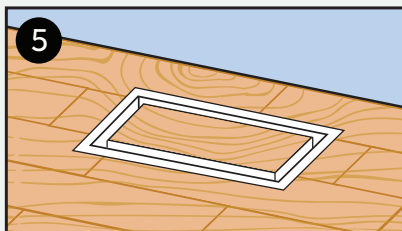
2 Insert pre-cut flooring material.



3 Apply even pressure so the floor material is level to rim of **Tray**.
Let cure.



4 Insert vent in place.



5 Enjoy!

Control Air Flow

No airflow included with this model. See which **Lite Dampers** are compatible with this product at www.ariavent.com

Additional Support

support@ariavent.com / www.ariavent.com