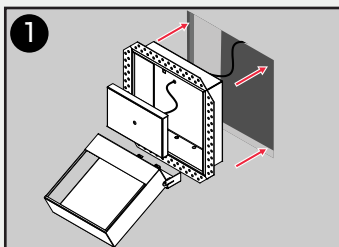


Materials Needed

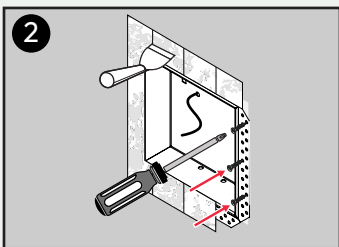
- Screws and a screwdriver
- Drywall compound and sanding material

IMPORTANT

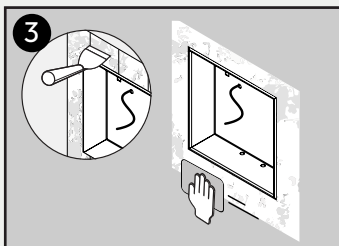
- For wall and ceiling surfaces ONLY
- DO NOT Install on floors!



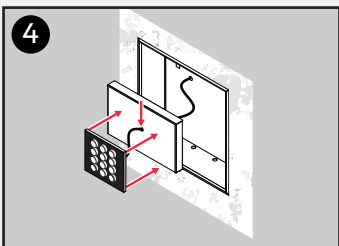
Remove Door and Mounting Plate. Dry fit **Body** into place. Ensure wiring is run through the hole.



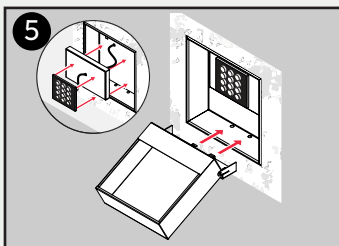
Fasten **Body** in place with screws. Mud and tape drywall compound to cover flange.



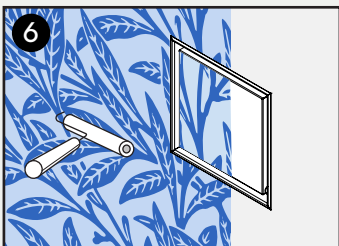
Once dry, sand mud until the surface transitions smoothly. Repeat steps 2 & 3 as needed.



Mount keypad to **Mounting Plate**. Run wire through the hole in the center of the **Mounting Plate**.



Slide **Mounting Plate** and **Door** back into place.



Customize the **Niche** and surrounding surface with paint/wallpaper.

Additional Support

support@ariavent.com / www.ariavent.com

Patent Information

www.ariavent.com/pages/patents



Made in Canada

