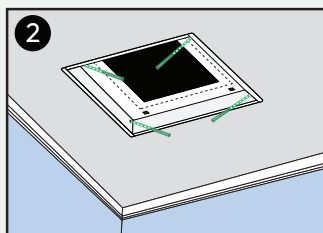
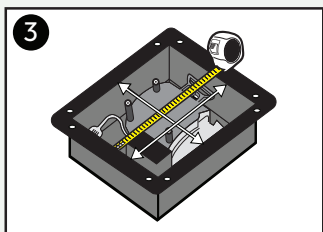


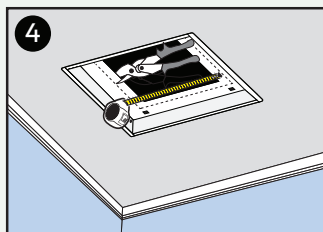
1 Dry-fit **Base** into vent opening.



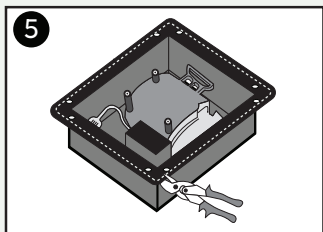
2 Ensure flange is flat to the wall.
Use screws to fasten as needed.



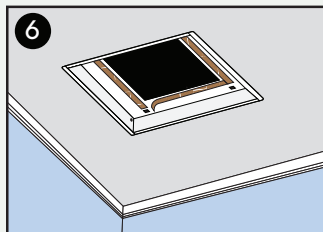
3 Measure base of ventilation fan to check if adjustments need to be made to the **Framed Exhaust Mount** opening.



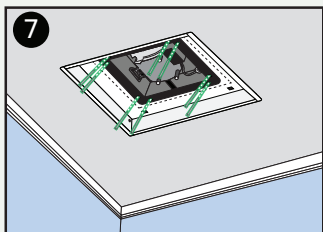
4 Measure **Body**. If adjustment is necessary, cut along perforated edges according to sizes in step #2.



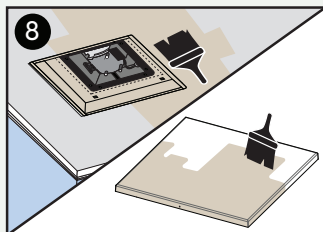
5 Some fan flanges can obstruct holes needed to slide on the **Tray** (step 8). If this is the case, trim flanges of fan.



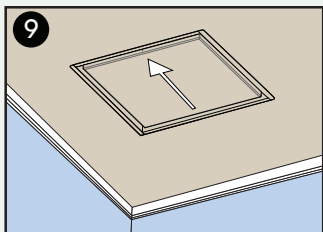
6 Peel and stick provided sound dampening strips along the edges of the opening.



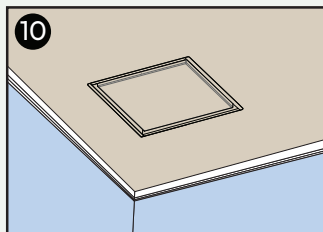
7 Insert and fasten fan with screws. Sound dampening strips should be sandwiched between fan and **Body**.



8 Paint inside of the **Body** and **Tray** to match ceiling colour. Do not paint fan.



9 Insert and slide **Tray** into place. Use hole on the side of the **Tray** as a guide.

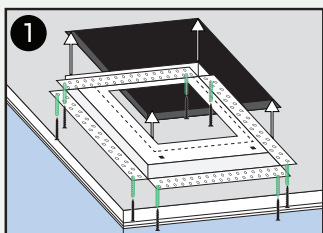


10 Enjoy!

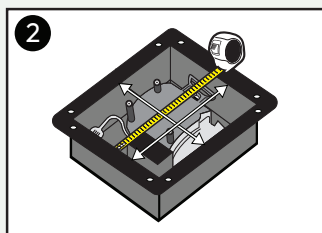
Additional Support

support@fittes.com / www.fittes.com

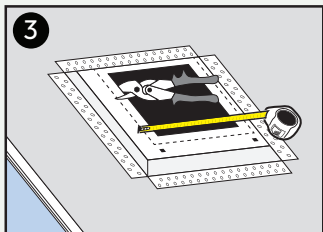
www.fittes.com/pages/patents



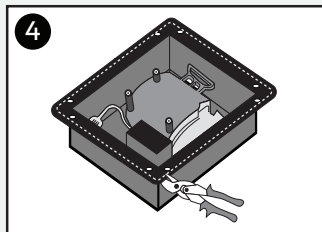
1 Mount **Base** into vent opening. Fasten with screws as needed.



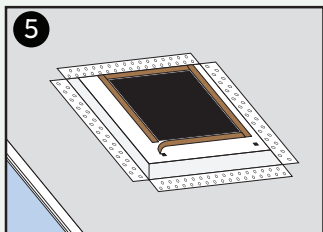
2 Measure base of ventilation fan to check if adjustments need to be made to the **Flush Exhaust Mount** opening.



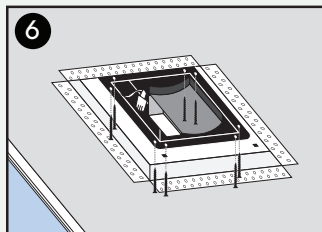
3 Measure **Body**. If adjustment is necessary, cut along perforated edges according to sizes in step #2.



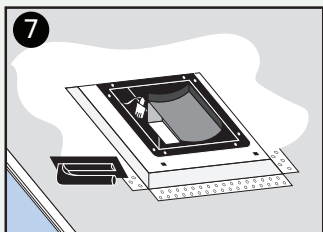
4 Some fan flanges can obstruct holes needed to slide on the **Tray** (step 9). If this is the case, trim flanges of fan.



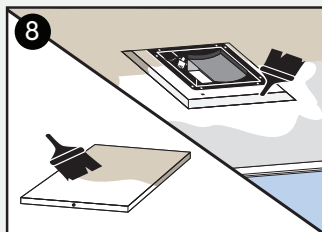
5 Peel and stick provided sound dampening strips along the edges of the opening.



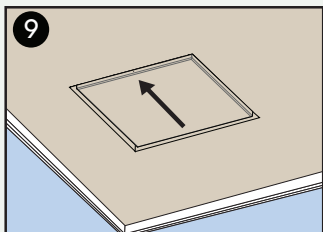
6 Insert and fasten fan with screws. Sound dampening strips should be sandwiched between fan and **Body**.



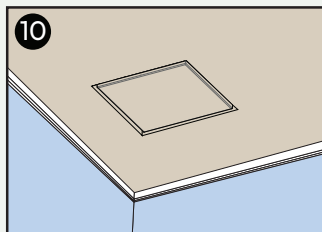
7 Use mud to cover flange surfaces. Wait to dry, then sand. Repeat as needed.



8 Paint inside of the **Body** and **Tray** to match ceiling colour. Do not paint fan.



9 Insert and slide **Tray** into place. Use hole on the side of the **Tray** as a guide.



10 Enjoy!

Additional Support

support@fittes.com / www.fittes.com

www.fittes.com/pages/patents