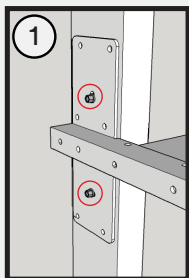
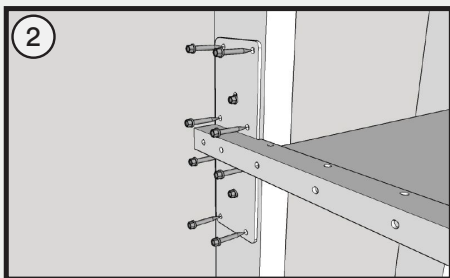


*Recommended span between brackets is 16" on center. Span will vary with application. Each bracket rated to hold 300 lbs.



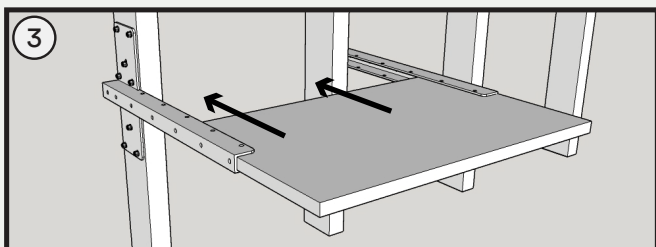
Use long openings to adjust level.

Utiliser les longues ouvertures pour ajuster le niveau.



Use provided screws to fasten plates to substrate.

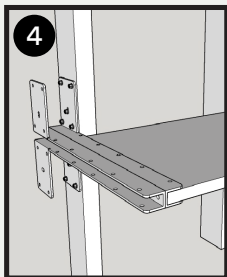
Utiliser les vis fournies pour fixer les plaques au substrat.



Slide in structural board. Must fit snug with minimal movement.

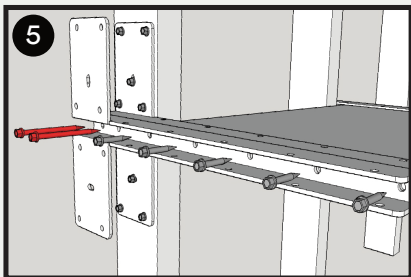
Glisser un panneau structurel. Doit être bien ajusté avec un minimum de mouvement.

***Optional: Add-on Extension *En option : Extension complémentaire**



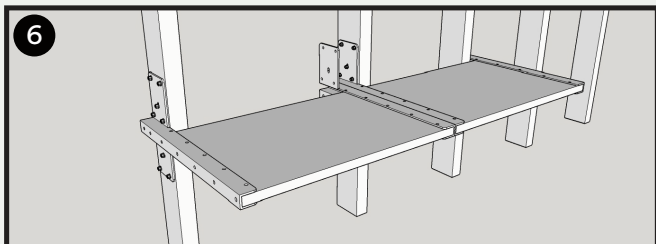
Add a new bracket.

Ajouter un nouveau support.



Fasten with provided screws. 2 additional long screws required (not included).

Fixer à l'aide des vis fournies. 2 vis longues supplémentaires sont nécessaires (non incluses).



Repeat steps 1 to 3. Continue adding brackets as needed.

Répétez les étapes 1 à 3 et continuez à ajouter des crochets si nécessaire.