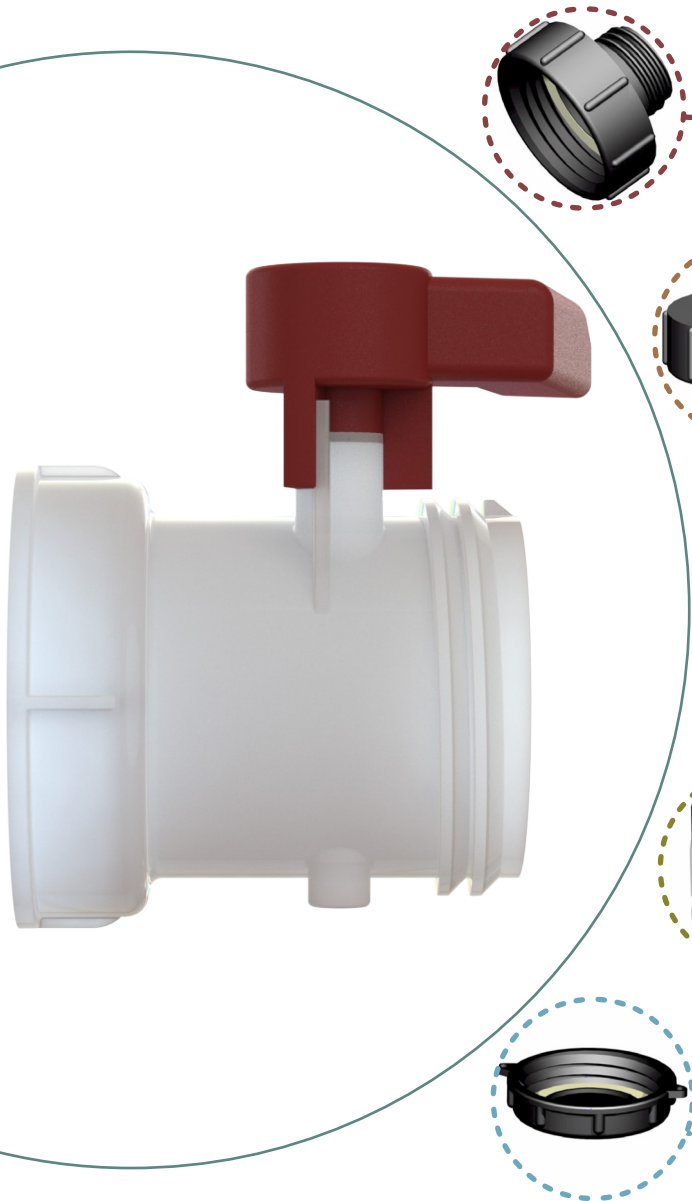


IBC VALVES

page 1 of 3

3" (S100 X 8) VALVE ADAPTERS



1	PART NUMBER
1	HMFU/32U/027
2	HMFM/32U/027
3	HMFB/30U/027

2	PART NUMBER
1	HFFM/32U/027

3	PART NUMBER
1	CMA/30U/027
2	CMA/2030U/027
3	CMA/1030U/027

4	PART NUMBER
1	CFB/30N/027
2	CFD/30N/027
3	CFC/30T/027

5	PART NUMBER
1	3BC/1008U/024
2	CFH/30C/027

I.S.O STANDARDS

- HIGH IMPACT POLYPROP

FOOD CONTACTS

- URT WEAR WASHERS

MADE IN UK

- DELIVERY & VOLUME DISCOUNTS ON REQUEST

JJD
 JJ DOWNS INDUSTRIAL PLASTICS INC.
JJDOWNS.COM

IBC VALVES

page 2 of 3

3" (S100 X 8) VALVE ADAPTERS

1

	PART NUMBER	
1	HMFU/32U/027	3" Part 'HA', S60X6 male buttress x S100x8 female buttress, C/W seal
2	HMFM/32U/027	2" NPS male X S100x8 female buttress C/W seal G/P/P
3	HMFB/30U/027	3" BSP male X S100x8 female G/P/P

2

	PART NUMBER	
1	HFFM/32U/027	2" NPS female X S100X8 buttress female, G/P/P C/W seals

3

	PART NUMBER	
1	CMA/30U/027	3" Part 'A', 3" Camlock adaptor x S100x8 female buttress
2	CMA/2030U/027	2" Part 'A', 2" Camlock adaptor x S100x8 female G/P/P
3	CMA/1030U/027	1" Part 'A', 1" Camlock adaptor x S100x8 female G/P/P

4

	PART NUMBER	
1	CFB/30N/027	3" Part 'B' 3" Camlock coupler x 3" NPT male G/P/P
2	CFD/30N/027	3" Part 'D' 3" Camlock coupler x 3" NPT female G/P/P
3	CFC/30T/027	3" part 'C' 3" Camlock coupler x 3" (75mm) hose tail

5

	PART NUMBER	
1	3BC/1008U/024	S100X8 Female buttress dust P/P BLACK. C/W seal
2	CFH/30C/027	3" Part 'DC' 3" Camlock coupler x Dust cap G/P/P

I.S.O
STANDARDS

•
HIGH
IMPACT
POLYPROP

FOOD
CONTACTS

•
URT
WEAR WASHERS

MADE
IN UK

•
DELIVERY & VOLUME
DISCOUNTS
ON REQUEST

JJD

JJ DOWNS INDUSTRIAL PLASTICS INC.

JJDOWNS.COM



JJ DOWNS INDUSTRIAL PLASTICS INC.

416.236.1884

JJDOWNS.COM

Toronto, ON



IBC VALVES

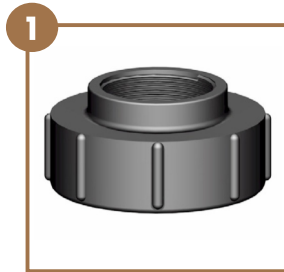
page 3 of 3

3" (S100 X 8) VALVE ADAPTERS

	PART NUMBER	1
1	HMFU/32U/027	
2	HFMF/32U/027	
3	HMFB/30U/027	



	PART NUMBER	2
1	HFFM/32U/027	



	PART NUMBER	3
1	CMA/30U/027	
2	CMA/2030U/027	
3	CMA/1030U/027	



	PART NUMBER	4
1	CFB/30N/027	
2	CFD/30N/027	
3	CFC/30T/027	



	PART NUMBER	5
1	3BC/1008U/024	
2	CFH/30C/027	

