

# IBC VALVES

page 1 of 3

1	
	PART NUMBER
1	CFB/2075HR/027
2	CFB/20UD/027
3	CFB/2010PB/027
4	CFSB/20075HR/027
5	CFSB/20075N/027
6	CFSB/2010B/027
7	CFSB/2012B/027



2	
	PART NUMBER
1	CFB/20075C/027
2	CFB/2010C/027
3	CFB/2015C/027



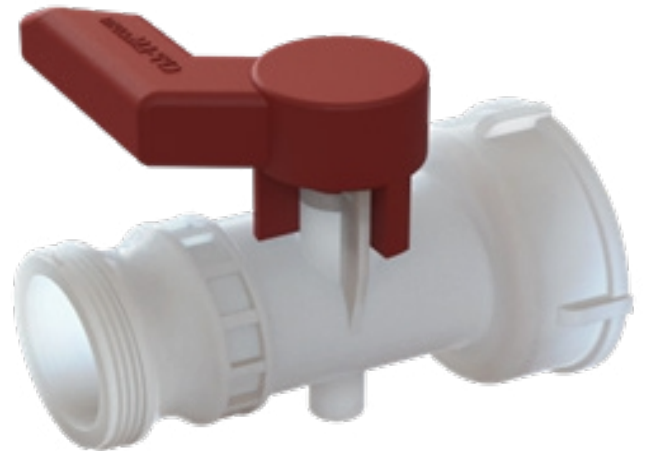
3	
	PART NUMBER
1	CFC/21T/027
2	CFC/212T/027
3	CFC/215T/027
4	CFC/20T/027



4	
	PART NUMBER
1	CFB/20N/027
2	CFD/2010B/027
3	CFD/20UD/027
4	CFD/2015B/027
5	CFD/2075B/027
6	CFSD/2005B/027
7	CFSD/20075N/027
8	CFSD/2010B/027
9	CFSD/209010B/027



5	
	PART NUMBER
1	2BCSS/20B/024
2	2BCSS/21B/024
3	CFH/20C/027



## IBC VALVES WITH 2" MALE CAMLOCK ADAPTER

I.S.O  
STANDARDS

•  
HIGH  
IMPACT  
POLYPROP

FOOD  
CONTACTS

•  
URT  
WEAR WASHERS

MADE  
IN UK

•  
DELIVERY & VOLUME  
DISCOUNTS  
ON REQUEST

# JJD

JJ DOWNS INDUSTRIAL PLASTICS INC.

JJDOWNS.COM

## IBC VALVES WITH 2" MALE CAMLOCK ADAPTER

**1**

	PART NUMBER	FEMALE CAMLOCK TO MALE NPT/BSP/BUTTRESS
1	CFB/2075HR/027	2" Part B 2" Camlock coupler x 11.5 NHR male garden thread
2	CFB/20UD/027	2" Part 'B', 2" Camlock coupler x S60X6 male buttress, G/P/P
3	CFB/2010PB/027	2" Part B 2" Camlock coupler x 1" BSP Short male, C/W o-ring
4	CFSB/20075HR/027	2" Part 'SB', 2" Camlock swivel coupler x 3/4" 11.5 NHR male garden thread G/P/P
5	CFSB/20075N/027	2" Part 'SB', 2" Camlock swivel coupler x 3/4" NPT male G/P/P
6	CFSB/2010B/027	2" Part 'SB', 2" Camlock swivel coupler x 1" BSP male G/P/P
7	CFSB/2012B/027	2" Part 'SB', 2" Camlock swivel coupler x 1 1/4" BSP male G/P/P

**2**

	PART NUMBER	FEMALE CAMLOCK TO MALE CAMLOCK REDUCER
1	CFB/20075C/027	2" Part B 2" Camlock coupler x 3/4" Camlock male
2	CFB/2010C/027	2" Part B 2" Camlock coupler x 1" Camlock male
3	CFB/2015C/027	2" Part B 2" Camlock coupler x 1 1/2" Camlock male

**3**

	PART NUMBER	FEMALE CAMLOCK TO MALE HOSE BARB
1	CFC/21T/027	2" part 'C', 2" Camlock coupler x 1"(25mm) hose tail G/P/P
2	CFC/212T/027	2" Part 'C', 2" Camlock coupler x 1 1/4" (32mm) hose tail G/P/P
3	CFC/215T/027	2" Part 'C', 2" Camlock coupler x 1 1/2" (38mm) hose tail G/P/P
4	CFC/20T/027	2" part 'C', 2" Camlock coupler x 2" (50mm) hose tail G/P/P

**4**

	PART NUMBER	FEMALE CAMLOCK TO FEMALE NPT/BSP/BUTTRESS
1	CFB/20N/027	2" Part 'B' 2" Camlock coupler x 2" NPT male G/P/P
2	CFD/2010B/027	2" Part D 2" Female camlock adapter x 1" BSP female G/P/P
3	CFD/20UD/027	2" Part 'D', 2" Camlock coupler x S60x6 female G/P/P
4	CFD/2015B/027	2" Part D x 2" Camlock coupler x 1 1/2" BSP female G/P/P
5	CFD/2075B/027	2" Part 'D' x 2" Camlock coupler x 3/4" BSP female G/P/P
6	CFSD/2005B/027	2" Part 'SD', 2" Camlock swivel coupler x 1/2" BSP female G/P/P
7	CFSD/20075N/027	2" Part 'SD', 2" Camlock swivel coupler x 3/4" NPT female G/P/P
8	CFSD/2010B/027	2" Part 'SD', 2" Camlock swivel coupler x 1" BSP female G/P/P
9	CFSD/209010B/027	2" Part 'SD', 2" Camlock swivel coupler x 1" BSP femalew elbow G/P/P

**5**

	PART NUMBER	DUST CAPS
1	2BCSS/20B/024	2 BSP dust cap for IBC valve camlock outlet, P/P black
2	2BCSS/21B/024	2 1/8" (63mm) dust cap for IBC valve cam-cap, P/P black
3	CFH/20C/027	2" Part 'DC' 2" camlock coupler x dust dap G/P/P



JJ DOWNS INDUSTRIAL PLASTICS INC.

416.236.1884

JJDOWNS.COM

Toronto, ON



# IBC VALVES

page 3 of 3

		1
	PART NUMBER	
1	CFB/2075HR/027	
2	CFB/20UD/027	
3	CFB/2010PB/027	
4	CFSB/20075HR/027	
5	CFSB/20075N/027	
6	CFSB/2010B/027	
7	CFSB/2012B/027	



		2
	PART NUMBER	
1	CFB/20075C/027	
2	CFB/2010C/027	
3	CFB/2015C/027	



		3
	PART NUMBER	
1	CFC/21T/027	
2	CFC/212T/027	
3	CFC/215T/027	
4	CFC/20T/027	



		4
	PART NUMBER	
1	CFB/20N/027	
2	CFD/2010B/027	
3	CFD/20UD/027	
4	CFD/2015B/027	
5	CFD/2075B/027	
6	CFSD/2005B/027	
7	CFSD/20075N/027	
8	CFSD/2010B/027	
9	CFSD/209010B/027	



		5
	PART NUMBER	
1	2BCSS/20B/024	
2	2BCSS/21B/024	
3	CFH/20C/027	

