



Schedule 40 Fittings Product
PVC White Saddles & Hot-Tap Saddles

Glue-On Saddles

Part Number	Size	Std Pk	Mstr Ctn	Prod Code
-------------	------	--------	----------	-----------

Saddle



IPS O.D. x Socket

NSF-61

463-288	2-1/2X3/4	10	0	040
463-333 ¹	3X1/2	10	0	040
463-335 ¹	3X1	10	0	040
463-336 ¹	3X1-1/4	10	0	040
463-337	3X1-1/2	10	0	040
463-338 ²	3X2	10	0	040
463-415 ¹	4X1/2	10	0	040
463-416 ¹	4X3/4	10	0	040
463-417 ¹	4X1	10	0	040
463-418 ¹	4X1-1/4	10	0	040
463-419	4X1-1/2	10	0	040
463-420 ²	4X2	10	0	040
463-485 ¹	5X1-1/2	6	0	040
463-486	5X2	6	0	040
463-523 ¹	6X1/2	5	0	040
463-525 ¹	6X1	10	0	040
463-526 ¹	6X1-1/4	5	0	040
463-527	6X1-1/2	5	0	040
463-528 ²	6X2	5	0	040
463-530 ¹	6X3	5	0	040
463-532	6X4	5	0	040
463-573 ¹	8X1/2	5	0	040
463-575 ¹	8X1	5	0	040
463-576 ¹	8X1-1/4	5	0	040
463-577	8X1-1/2	5	0	040
463-578 ²	8X2	5	0	040
463-580 ¹	8X3	5	0	040
463-582	8X4	5	0	040
463-624	10X4	5	0	041

¹ Outlet-sized with Bushing

² Outlet-sized with Coupling

Note: See following Installation Instructions

Saddle



IPS O.D. x Fipt

NSF-61

464-288	2-1/2X3/4	10	0	040
464-337	3X1-1/2	10	0	040
464-419	4X1-1/2	10	0	040
464-486	5X2	6	0	040
464-527	6X1-1/2	5	0	040

Part Number	Size	Std Pk	Mstr Ctn	Prod Code
-------------	------	--------	----------	-----------

Saddle (continued)

IPS O.D. x Fipt

464-532	6X4	5	0	040
464-577	8X1-1/2	5	0	040
464-582	8X4	5	0	040
464-624	10X4	5	0	041

Saddle Installation

Instructions:

When Assembling Spears® Saddles to PVC pipe, Spears® Manufacturing Company recommends Spears® PVC-19 Extra Heavy Body Solvent Cement and Spears® PRIMER-68 or PRIMER-70, or equivalent. Although good connections may be accomplished without saddle straps, Spears® Manufacturing Company recommends the use of clamp or strap device during the assembly step to ensure good compression between the pipe and fitting surfaces as the solvent cures. Solvent cemented saddles are non pressure rated. For additional information, contact Spears® Technical Service.

Snap-On Saddle



IPS O.D. x Socket

NSF-61

463-005	1/2	25	300	040
463-007	3/4	25	200	040
463-010	1	50	0	040
463-012	1-1/4	50	0	040
463-015	1-1/2	25	0	040
463-020	2	20	0	040
463-101	3/4X1/2	25	300	040
463-130	1X1/2	50	0	040

Note: See following installation instructions

Snap-On Saddle



IPS O.D. x Fipt

464-005	1/2	25	300	040
464-007	3/4	25	200	040
464-010	1	50	0	040
464-071	1/2X1/8	50	300	040
464-097	3/4X1/8	50	200	040
464-101	3/4X1/2	25	300	040
464-130	1X1/2	50	0	040
464-131	1X3/4	50	0	040
464-210	1-1/2X3/4	25	0	040

Suitable for Oil-Free air handling to 25 psi, not for distribution of compressed air or gas

JJ DOWNS INDUSTRIAL PLASTICS INC.

416.236.1884
Toronto, ON
JJDOWNS.COM



Schedule 40 Fitti
PVC White Saddles & Hot-Tap Saddles

Glue-On Saddles

Part Number	Size	Std PK	Mstr Ctn	Prod Code
-------------	------	-----------	-------------	--------------

Snap-On Saddle (continued)

IPS O.D. x Fipt

Snap-On Saddle Installation Instructions


- The surface to be joined must be wiped clean.
- Using an appropriate applicator, apply a coat of primer to the fitting and pipe.
- While the primer is still wet, apply a generous coat of medium bodied cement first to the pipe, then to the fitting and then to the pipe again, covering an area of the pipe slightly larger than the saddle.
- Without delay, push the saddle onto the pipe and rotate the fitting approximately 15° in each direction to evenly distribute the cement.
- Allow cement to cure.
- Drill fitting and pipe with the recommended size hole saw.
- Remove debris from the line.
- Follow all safe handling precautions.

Solvent cemented saddles are non pressure rated. For additional information, contact Spears® Technical Service.

Size	SCH 40 DWV Prod Code: 390 Part Number	SCH 80 DWV Prod Code: 400 Part Number
------	---	---


Saddle (IPS O.D.x Socket)

Non-Pressure Rated

	6X2	3763-528	
	6X3	3763-530	
	6X4	3763-532	
	8X2	3763-578	
	8X3	3763-580	
	8X4	3763-582	
	8X6	3763-585	
	10X2	3763-621	
	10X3	3763-623	
	10X4	3763-624	
	10X6	3763-626	
	10X8	3763-628	
	12X2	3763-661	
	12X3	3763-663	
	12X4	3763-664	
	12X6	3763-666	
	12X8	3763-668	
	12X10	3763-670	
	14X2	3763-691	
	14X3	3763-693	
	14X4	3763-694	
	14X6	3763-696	

Size	SCH 40 DWV Prod Code: 390 Part Number	SCH 80 DWV Prod Code: 400 Part Number
------	---	---


Saddle (IPS O.D.x Socket) (continued)

	14X8	3763-698	
	14X10	3763-700	
	14X12	3763-702	
	16X2	3763-751	
	16X3	3763-753	
	16X4	3763-754	
	16X6	3763-756	
	16X8	3763-758	
	16X10	3763-760	
	16X12	3763-762	
	16X14	3763-764	
	18X2	3763-781	
	18X3	3763-783	
	18X4	3763-784	
	18X6	3763-786	
	18X8	3763-788	
	18X10	3763-790	
	18X12	3763-792	
	18X14	3763-794	
	18X16	3763-796	
	20X2	3763-811	
	20X3	3763-813	
	20X4	3763-814	
	20X6	3763-816	
	20X8	3763-818	
	20X10	3763-820	
	20X12	3763-822	
	20X14	3763-824	
	20X16	3763-826	
	20X18	3763-828	
	24X2	3763-901	
	24X3	3763-903	
	24X4	3763-904	
	24X6	3763-906	
	24X8	3763-908	
	24X10	3763-910	
	24X12	3763-912	
	24X14	3763-914	
	24X16	3763-916	
	24X18	3763-918	
	24X20	3763-920	

Size	SCH 40 DWV Prod Code: 390 Part Number	SCH 80 DWV Prod Code: 400 Part Number
------	---	---

Stub Saddle (IPS O.D x Socket)

Non-Pressure Rated

	6X2	3765-528	
	6X3	3765-530	
	6X4	3765-532	
	8X2	3765-578	
	8X3	3765-580	
	8X4	3765-582	
	8X6	3765-585	

Suitable for Oil-Free air handling to 25 psi, not for distribution of compressed air or gas

JJD	member iapd
JJ DOWNS INDUSTRIAL PLASTICS INC.	international association of plastics distribution
416.236.1884	Toronto, ON JJDOWNS.COM




Schedule 40 Fittings Product
PVC White Saddles & Hot-Tap Saddles

Glue-On Saddles


Size	SCH 40 DWV	SCH 80 DWV
	Prod Code: 390	Prod Code: 400
	Part Number	Part Number

Stub Saddle (IPS O.D x Socket) (continued)

	10X2	3765-621	
	10X3	3765-623	
	10X4	3765-624	
	10X6	3765-626	
	10X8	3765-628	
	12X2	3765-661	
	12X3	3765-663	
	12X4	3765-664	
	12X6	3765-666	
	12X8	3765-668	
	12X10	3765-670	
	14X2	3765-691	
	14X3	3765-693	
	14X4	3765-694	
	14X6	3765-696	
	14X8	3765-698	
	14X10	3765-700	
	14X12	3765-702	
	16X2	3765-751	
	16X3	3765-753	
	16X4	3765-754	
	16X6	3765-756	
	16X8	3765-758	
	16X10	3765-760	
	16X12	3765-762	
	16X14	3765-764	
	18X2	3765-781	
	18X3	3765-783	
	18X4	3765-784	
	18X6	3765-786	
	18X8	3765-788	
	18X10	3765-790	
	18X12	3765-792	
	18X14	3765-794	
	18X16	3765-796	
	20X2	3765-811	
	20X3	3765-813	
	20X4	3765-814	
	20X6	3765-816	
	20X8	3765-818	
	20X10	3765-820	
	20X12	3765-822	
	20X14	3765-824	
	20X16	3765-826	
	20X18	3765-828	
	24X2	3765-901	
	24X3	3765-903	
	24X4	3765-904	
	24X6	3765-906	
	24X8	3765-908	
	24X10	3765-910	

Size	SCH 40 DWV	SCH 80 DWV
	Prod Code: 390	Prod Code: 400
	Part Number	Part Number

Stub Saddle (IPS O.D x Socket) (continued)

	24X12	3765-912	
	24X14	3765-914	
	24X16	3765-916	
	24X18	3765-918	
	24X20	3765-920	

Suitable for Oil-Free air handling to 25 psi, not for distribution of compressed air or gas

JJD	 <small>member iapd international association of plastics distribution</small>
JJ DOWNS INDUSTRIAL PLASTICS INC.	
416.236.1884	Toronto, ON
JJDOWNS.COM	



Schedule 40 Fittings Product
Clamp-On Saddles

Clamp-On Saddles

Part Number	Size	Hole Saw Dia	Std Pk	Mstr Ctn	Prod Code
-------------	------	--------------	--------	----------	-----------

Clamp-On Saddle x Soc Single Outlet, PVC White

with Buna-N O-ring Seal & Zinc-Plated Hardware



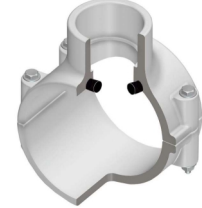
2"- 4" 235, 6" 200, 8"-12" 150 psi @ 73°F (23°C)

466-247	2X1/2	3/4	1	10	046
466-248	2X3/4	7/8	1	10	046
466-249	2X1	1-1/8	1	10	046
466-250	2X1-1/4	1-1/2	1	10	046
466-251	2X1-1/2	1-1/2	1	10	046
466-291	2-1/2X1-1/2	1-3/4	1	10	046
466-333 ¹	3X1/2	7/8	1	10	046
466-334	3X3/4	7/8	1	10	046
466-335	3X1	1-1/8	1	10	046
466-336 ¹	3X1-1/4	2-1/4	1	10	046
466-337 ¹	3X1-1/2	2-1/4	1	10	046
466-338	3X2	2-1/4	1	10	046
466-415 ¹	4X1/2	1-1/8	1	10	046
466-416 ¹	4X3/4	1-1/8	1	10	046
466-417	4X1	1-1/8	1	8	046
466-418 ¹	4X1-1/4	1-3/4	1	8	046
466-419	4X1-1/2	1-3/4	1	8	046
466-420	4X2	2-1/4	1	8	046
466-421 ¹	4X2-1/2	3	1	4	046
466-422	4X3	3	1	4	046
466-523 ¹	6X1/2	1-1/8	1	4	046
466-524 ¹	6X3/4	1-1/8	1	4	046
466-525	6X1	1-1/8	1	4	046
466-526 ¹	6X1-1/4	2-1/4	1	4	046
466-527 ¹	6X1-1/2	2-1/4	1	4	046
466-528	6X2	2-1/4	1	4	046
466-529 ¹	6X2-1/2	3	1	4	046
466-530	6X3	3	1	4	046
466-532	6X4	4	1	4	046
466-573 ¹	8X1/2	4	1	0	046
466-574 ¹	8X3/4	4	1	0	046
466-575 ¹	8X1	4	1	0	046
466-576 ¹	8X1-1/4	4	1	0	046
466-577 ¹	8X1-1/2	4	1	0	046
466-578	8 X 2	4	1	0	046
466-579 ¹	8X2-1/2	4	1	0	046
466-580 ¹	8X3	4	1	0	046
466-582	8X4	4	1	0	046
466-585	8X6	6	1	0	046
466-620 ¹	10X1-1/2	4	1	0	046
466-624	10X4	4	1	0	046
466-626	10X6	6	1	0	046
466-660 ¹	12X1-1/2	4	1	0	046
466-664	12X4	4	1	0	046

Part Number	Size	Hole Saw Dia	Std Pk	Mstr Ctn	Prod Code
Clamp-On Saddle x Soc Single Outlet, PVC White (continued) with Buna-N O-ring Seal & Zinc-Plated Hardware					
466-666	12X6	6	1	0	046
¹ Outlet-sized with Bushing					

Clamp-On Saddle x Soc Single Outlet, PVC White

with Buna-N O-ring Seal & SS Hardware



2"- 4" 235, 6" 200, 8"-12" 150 psi @ 73°F (23°C)

466S-247	2X1/2	3/4	1	10	046
466S-248	2X3/4	7/8	1	10	046
466S-249	2X1	1-1/8	1	10	046
466S-250	2X1-1/4	1-1/2	1	10	046
466S-251	2X1-1/2	1-1/2	1	10	046
466S-291	2-1/2X1-1/2	1-3/4	1	10	046
466S-333 ¹	3X1/2	7/8	1	10	046
466S-334	3X3/4	7/8	1	10	046
466S-335	3X1	1-1/8	1	10	046
466S-336 ¹	3X1-1/4	2-1/4	1	10	046
466S-337 ¹	3X1-1/2	2-1/4	1	10	046
466S-338	3X2	2-1/4	1	10	046
466S-415 ¹	4X1/2	1-1/8	1	10	046
466S-416 ¹	4X3/4	1-1/8	1	10	046
466S-417	4X1	1-1/8	1	10	046
466S-418 ¹	4X1-1/4	1-3/4	1	8	046
466S-419	4X1-1/2	1-3/4	1	8	046
466S-420	4X2	2-1/4	1	8	046
466S-421 ¹	4X2-1/2	3	1	4	046
466S-422	4X3	3	1	4	046
466S-523 ¹	6X1/2	1-1/8	1	4	046
466S-524 ¹	6X3/4	1-1/8	1	4	046
466S-525	6X1	1-1/8	1	4	046
466S-526 ¹	6X1-1/4	2-1/4	1	4	046
466S-527 ¹	6X1-1/2	2-1/4	1	4	046
466S-528	6X2	2-1/4	1	4	046
466S-529 ¹	6X2-1/2	3	1	4	046
466S-530	6X3	3	1	4	046
466S-532	6X4	4	1	4	046
466S-573 ¹	8X1/2	4	1	0	046
466S-574 ¹	8X3/4	4	1	0	046
466S-575 ¹	8X1	4	1	0	046
466S-576 ¹	8X1-1/4	4	1	0	046
466S-577 ¹	8X1-1/2	4	1	0	046
466S-578	8 X 2	4	1	0	046
466S-579 ¹	8X2-1/2	4	1	0	046
466S-580 ¹	8X3	4	1	0	046
466S-582	8X4	4	1	0	046
466S-585	8X6	6	1	0	046
466S-620 ¹	10X1-1/2	4	1	0	046
466S-624	10X4	4	1	0	046
466S-626	10X6	6	1	0	046

Suitable for Oil-Free air handling to 25 psi, not for distribution of compressed air or gas

JJ DOWNS INDUSTRIAL PLASTICS INC.

416.236.1884
Toronto, ON
JJDOWNS.COM



Schedule 40 Fittings Product
Clamp-On Saddles

Clamp-On Saddles

Part Number	Size	Hole Saw Dia	Std Pk	Mstr Ctn	Prod Code
Clamp-On Saddle x Soc Single Outlet, PVC White (continued) with Buna-N O-ring Seal & SS Hardware					
466S-660 ¹	12X1-1/2		1	0	046
466S-664	12X4	4	1	0	046
466S-666	12X6	6	1	0	046

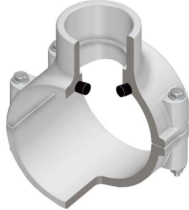
¹ Outlet-sized with Bushing

Part Number	Size	Hole Saw Dia	Std Pk	Mstr Ctn	Prod Code
Clamp-On Saddle x Soc Single Outlet, PVC White (continued) with EPDM O-ring Seal & Zinc-Plated Hardware					
466E-585	8X6	6	1	0	046
466E-624	10X4	4	1	0	046
466E-626	10X6	6	1	0	046
466E-664	12X4	4	1	0	046
466E-666	12X6	6	1	0	046

¹ Outlet-sized with Bushing

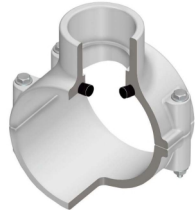
Clamp-On Saddle x Soc Single Outlet, PVC White

with EPDM O-ring Seal & Zinc-Plated Hardware



Clamp-On Saddle x Soc Single Outlet, PVC White

with EPDM O-ring & Seal & SS Hardware



2"- 4" 235, 6" 200, 8"-12" 150 psi @ 73°F (23°C)

466E-247	2X1/2	3/4	1	10	046
466E-248	2X3/4	7/8	1	10	046
466E-249	2X1	1-1/8	1	10	046
466E-250	2X1-1/4	1-1/2	1	10	046
466E-251	2X1-1/2	1-1/2	1	10	046
466E-291	2-1/2X1-1/2	1-3/4	1	10	046
466E-333 ¹	3X1/2	7/8	1	10	046
466E-334	3X3/4	7/8	1	10	046
466E-335	3X1	1-1/8	1	10	046
466E-336 ¹	3X1-1/4	2-1/4	1	10	046
466E-337 ¹	3X1-1/2	2-1/4	1	10	046
466E-338	3X2	2-1/4	1	10	046
466E-415 ¹	4X1/2	1-1/8	1	10	046
466E-416 ¹	4X3/4	1-1/8	1	10	046
466E-417	4X1	1-1/8	1	8	046
466E-418 ¹	4X1-1/4	1-3/4	1	8	046
466E-419	4X1-1/2	1-3/4	1	8	046
466E-420	4X2	2-1/4	1	8	046
466E-421 ¹	4X2-1/2	3	1	4	046
466E-422	4X3	3	1	4	046
466E-523 ¹	6X1/2	1-1/8	1	4	046
466E-524 ¹	6X3/4	1-1/8	1	4	046
466E-525	6X1	1-1/8	1	4	046
466E-526 ¹	6X1-1/4	2-1/4	1	4	046
466E-527 ¹	6X1-1/2	1-1/8	1	4	046
466E-528	6X2	2-1/4	1	4	046
466E-529 ¹	6X2-1/2	3	1	4	046
466E-530	6X3	3	1	4	046
466E-532	6X4	4	1	4	046
466E-573	8X1/2	4	1	0	046
466E-574	8X3/4	4	1	0	046
466E-575	8X1	4	1	0	046
466E-576 ¹	8X1-1/4	4	1	0	046
466E-577 ¹	8X1-1/2	4	1	0	046
466E-578	8 X 2	4	1	0	046
466E-579	8X2-1/2	4	1	0	046
466E-580 ¹	8X3	4	1	0	046
466E-582	8X4	4	1	0	046

2"- 4" 235, 6" 200, 8"-12" 150 psi @ 73°F (23°C)

466SE-247	2X1/2	3/4	1	10	046
466SE-248	2X3/4	7/8	1	10	046
466SE-249	2X1	1-1/8	1	10	046
466SE-250	2X1-1/4	1-1/2	1	10	046
466SE-251	2X1-1/2	1-1/2	1	10	046
466SE-291	2-1/2X1-1/2	1-3/4	1	10	046
466SE-333 ¹	3X1/2	7/8	1	10	046
466SE-334	3X3/4	7/8	1	10	046
466SE-335	3X1	1-1/8	1	10	046
466SE-336 ¹	3X1-1/4	2-1/4	1	10	046
466SE-337 ¹	3X1-1/2	2-1/4	1	10	046
466SE-338	3X2	2-1/4	1	10	046
466SE-415 ¹	4X1/2	1-1/8	1	10	046
466SE-416 ¹	4X3/4	1-1/8	1	10	046
466SE-417	4X1	1-1/8	1	8	046
466SE-418 ¹	4X1-1/4	1-3/4	1	8	046
466SE-419	4X1-1/2	1-3/4	1	8	046
466SE-420	4X2	2-1/4	1	8	046
466SE-421 ¹	4X2-1/2	3	1	4	046
466SE-422	4X3	3	1	4	046
466SE-523 ¹	6X1/2	1-1/8	1	4	046
466SE-524 ¹	6X3/4	1-1/8	1	4	046
466SE-525	6X1	1-1/8	1	4	046
466SE-526 ¹	6X1-1/4	2-1/4	1	4	046
466SE-527 ¹	6X1-1/2	2-1/4	1	4	046
466SE-528	6X2	2-1/4	1	4	046
466SE-529 ¹	6X2-1/2	3	1	4	046
466SE-530	6X3	3	1	4	046
466SE-532	6X4	4	1	4	046
466SE-573	8X1/2	4	1	0	046
466SE-574 ¹	8X3/4	4	1	0	046
466SE-575 ¹	8X1	4	1	0	046
466SE-576	8X1-1/4	4	1	0	046
466SE-577 ¹	8X1-1/2	4	1	0	046
466SE-578	8X2	4	1	0	046
466SE-579 ¹	8X2-1/2	4	1	0	046
466SE-580 ¹	8X3	4	1	0	046
466SE-582	8X4	4	1	0	046

Suitable for Oil-Free air handling to 25 psi, not for distribution of compressed air or gas

JJ DOWNS INDUSTRIAL PLASTICS INC.

416.236.1884
Toronto, ON
JJDOWNS.COM



Schedule 40 Fittings Product
Clamp-On Saddles

Clamp-On Saddles

Part Number	Size	Hole Saw Dia	Std Pk	Mstr Ctn	Prod Code
Clamp-On Saddle x Soc Single Outlet, PVC White (continued) with EPDM O-ring & Seal & SS Hardware					
466SE-585	8X6	6	1	0	046
466SE-624	10X4	4	1	0	046
466SE-626	10X6	6	1	0	046
466SE-664	12X4	4	1	0	046
466SE-666	12X6	4	1	0	046

¹ Outlet-sized with Bushing



Clamp-On Saddle x SR Thread Single Outlet, PVC White

with Buna-N O-ring Seal & Zinc-Plated Hardware

2"- 4" 235, 6" 200, 8"-12" 150 psi @ 73°F (23°C)

467-247SR	2X1/2	3/4	1	10	046
467-248SR	2X3/4	7/8	1	10	046
467-249SR	2X1	1-1/8	1	10	046
467-250SR	2X1-1/4	1-1/2	1	10	046
467-251SR	2X1-1/2	1-1/2	1	10	046
467-291SR	2-1/2X1-1/2	1-3/4	1	10	046
467-333SR ¹	3X1/2	7/8	1	10	046
467-334SR	3X3/4	7/8	1	10	046
467-335SR	3X1	1-1/8	1	10	046
467-336SR ¹	3X1-1/4	2-1/4	1	10	046
467-337SR ¹	3X1-1/2	2-1/4	1	10	046
467-338SR	3X2	2-1/4	1	10	046
467-415SR ¹	4X1/2	1-1/8	1	10	046
467-416SR ¹	4X3/4	1-1/8	1	10	046
467-417SR	4X1	1-1/8	1	8	046
467-418SR ¹	4X1-1/4	1-3/4	1	8	046
467-419SR	4X1-1/2	1-3/4	1	8	046
467-420SR	4X2	2-1/4	1	8	046
467-421SR ¹	4X2-1/2	3	1	4	046
467-422SR	4X3	3	1	4	046
467-523SR ¹	6X1/2	1-1/8	1	4	046
467-524SR ¹	6X3/4	1-1/8	1	4	046
467-525SR	6X1	1-1/8	1	4	046
467-526SR ¹	6X1-1/4	2-1/4	1	4	046
467-527SR ¹	6X1-1/2	2-1/4	1	4	046
467-528SR	6X2	2-1/4	1	4	046
467-529SR ¹	6X2-1/2	3	1	4	046
467-530SR	6X3	3	1	4	046
467-532SR	6X4	4	1	4	046
467-573SR ¹	8X1/2	4	1	0	046
467-574SR ¹	8X3/4	4	1	0	046
467-575SR ¹	8X1	4	1	0	046
467-576SR ¹	8X1-1/4	4	1	0	046
467-577SR ¹	8X1-1/2	4	1	0	046
467-578SR ¹	8X2	4	1	0	046
467-579SR ¹	8X2-1/2	4	1	0	046

Part Number	Size	Hole Saw Dia	Std Pk	Mstr Ctn	Prod Code
Clamp-On Saddle x SR Thread Single Outlet, PVC White (continued) with Buna-N O-ring Seal & Zinc-Plated Hardware					
467-580SR ¹	8X3	4	1	0	046
467-582SR	8X4	4	1	0	046
467-585SR	8X6	6	1	0	046
467-624SR	10X4	4	1	0	046
467-626SR	10X6	6	1	0	046
467-664SR	12X4	4	1	0	046
467-666SR	12X6	6	1	0	046

¹ Outlet-sized with Bushing



Clamp-On Saddle x SR Thread Single Outlet, PVC White

with Buna-N O-ring Seal & SS Hardware

2"- 4" 235, 6" 200, 8"-12" 150 psi @ 73°F (23°C)

467S-247SR	2X1/2	3/4	1	10	046
467S-248SR	2X3/4	7/8	1	10	046
467S-249SR	2X1	1-1/8	1	10	046
467S-250SR	2X1-1/4	1-1/2	1	10	046
467S-251SR	2X1-1/2	1-1/2	1	10	046
467S-291SR	2-1/2X1-1/2	1-3/4	1	10	046
467S-333SR ¹	3X1/2	7/8	1	10	046
467S-334SR	3X3/4	7/8	1	10	046
467S-335SR	3X1	1-1/8	1	10	046
467S-336SR ¹	3X1-1/4	2-1/4	1	10	046
467S-337SR ¹	3X1-1/2	2-1/4	1	10	046
467S-338SR	3X2	2-1/4	1	10	046
467S-415SR ¹	4X1/2	1-1/8	1	10	046
467S-416SR ¹	4X3/4	1-1/8	1	10	046
467S-417SR	4X1	1-1/8	1	8	046
467S-418SR ¹	4X1-1/4	1-3/4	1	8	046
467S-419SR	4X1-1/2	1-3/4	1	8	046
467S-420SR	4X2	2-1/4	1	8	046
467S-421SR ¹	4X2-1/2	3	1	4	046
467S-422SR	4X3	3	1	4	046
467S-523SR ¹	6X1/2	1-1/8	1	4	046
467S-524SR ¹	6X3/4	1-1/8	1	4	046
467S-525SR	6X1	1-1/8	1	4	046
467S-526SR ¹	6X1-1/4	2-1/4	1	4	046
467S-527SR ¹	6X1-1/2	2-1/4	1	4	046
467S-528SR	6X2	2-1/4	1	4	046
467S-529SR ¹	6X2-1/2	3	1	4	046
467S-530SR	6X3	3	1	4	046
467S-532SR	6X4	4	1	4	046
467S-573SR ¹	8X1/2	4	1	0	046
467S-574SR ¹	8X3/4	4	1	0	046
467S-575SR ¹	8X1	4	1	0	046
467S-576SR ¹	8X1-1/4	4	1	0	046
467S-577SR ¹	8X1-1/2	4	1	0	046
467S-578SR ¹	8X2	4	1	0	046

Suitable for Oil-Free air handling to 25 psi, not for distribution of compressed air or gas

JJ DOWNS INDUSTRIAL PLASTICS INC.

416.236.1884 Toronto, ON JJDOWNS.COM



Schedule 40 Fittings Prod
Clamp-On Saddles

Clamp-On Saddles

Part Number	Size	Hole Saw Dia	Std Pk	Mstr Ctn	Prod Code
-------------	------	--------------	--------	----------	-----------

Clamp-On Saddle x SR Thread Single Outlet, PVC White

(continued)

with Buna-N O-ring Seal & SS Hardware

467S-579SR ¹	8X2-1/2	4	1	0	046
467S-580SR ¹	8X3	4	1	0	046
467S-582SR	8X4	4	1	0	046
467S-585SR	8X6	6	1	0	046
467S-624SR	10X4	4	1	0	046
467S-626SR	10X6	6	1	0	046
467S-664SR	12X4	4	1	0	046
467S-666SR	12X6	6	1	0	046

¹ Outlet-sized with Bushing



Clamp-On Saddle x SR Thread Single Outlet, PVC White

with EPDM O-ring Seal & Zinc-Plated Hardware

2"- 4" 235, 6" 200, 8"-12" 150 psi @ 73°F (23°C)

467E-247SR	2X1/2	3/4	1	10	046
467E-248SR	2X3/4	7/8	1	10	046
467E-249SR	2X1	1-1/8	1	10	046
467E-250SR	2X1-1/4	1-1/2	1	10	046
467E-251SR	2X1-1/2	1-1/2	1	10	046
467E-291SR	2-1/2X1-1/2	1-3/4	1	10	046
467E-333SR ¹	3X1/2	7/8	1	10	046
467E-334SR	3X3/4	7/8	1	10	046
467E-335SR	3X1	1-1/8	1	10	046
467E-336SR ¹	3X1-1/4	2-1/4	1	10	046
467E-337SR ¹	3X1-1/2	2-1/4	1	10	046
467E-338SR	3X2	2-1/4	1	10	046
467E-415SR ¹	4X1/2	1-1/8	1	10	046
467E-416SR ¹	4X3/4	1-1/8	1	10	046
467E-417SR	4X1	1-1/8	1	8	046
467E-418SR ¹	4X1-1/4	1-3/4	1	8	046
467E-419SR	4X1-1/2	1-3/4	1	8	046
467E-420SR	4X2	2-1/4	1	8	046
467E-421SR ¹	4X2-1/2	3	1	4	046
467E-422SR	4X3	3	1	4	046
467E-523SR ¹	6X1/2	1-1/8	1	4	046
467E-524SR ¹	6X3/4	1-1/8	1	4	046
467E-525SR	6X1	1-1/8	1	4	046
467E-526SR ¹	6X1-1/4	2-1/4	1	4	046
467E-527SR ¹	6X1-1/2	2-1/4	1	4	046
467E-528SR	6X2	2-1/4	1	4	046
467E-529SR ¹	6X2-1/2	3	1	4	046
467E-530SR	6X3	3	1	4	046
467E-532SR	6X4	4	1	4	046
467E-573SR ¹	8X1/2	4	1	0	046
467E-574SR ¹	8X3/4	4	1	0	046
467E-575SR ¹	8X1	4	1	0	046

Part Number	Size	Hole Saw Dia	Std Pk	Mstr Ctn	Prod Code
-------------	------	--------------	--------	----------	-----------

Clamp-On Saddle x SR Thread Single Outlet, PVC White

(continued)

with EPDM O-ring Seal & Zinc-Plated Hardware

467E-576SR ¹	8X1-1/4	4	1	0	046
467E-577SR ¹	8X1-1/2	4	1	0	046
467E-578SR ¹	8X2	4	1	0	046
467E-579SR ¹	8X2-1/2	4	1	0	046
467E-580SR ¹	8X3	4	1	0	046
467E-582SR	8X4	4	1	0	046
467E-585SR	8X6	6	1	0	046
467E-624SR	10X4	4	1	0	046
467E-626SR	10X6	6	1	0	046
467E-664SR	12X4	4	1	0	046
467E-666SR	12X6	6	1	0	046

¹ Outlet-sized with Bushing



Clamp-On Saddle x SR Thread Single Outlet, PVC White

with EPDM O-ring Seal & SS Hardware

2"- 4" 235, 6" 200, 8"-12" 150 psi @ 73°F (23°C)

467SE-247SR	2X1/2	3/4	1	10	046
467SE-248SR	2X3/4	7/8	1	10	046
467SE-249SR	2X1	1-1/8	1	10	046
467SE-250SR	2X1-1/4	1-1/2	1	10	046
467SE-251SR	2X1-1/2	1-1/2	1	10	046
467SE-291SR	2-1/2X1-1/2	1-3/4	1	10	046
467SE-333SR ¹	3X1/2	7/8	1	10	046
467SE-334SR	3X3/4	7/8	1	10	046
467SE-335SR	3X1	1-1/8	1	10	046
467SE-336SR ¹	3X1-1/4	2-1/4	1	10	046
467SE-337SR ¹	3X1-1/2	2-1/4	1	10	046
467SE-338SR	3X2	2-1/4	1	10	046
467SE-415SR ¹	4X1/2	1-1/8	1	10	046
467SE-416SR ¹	4X3/4	1-1/8	1	10	046
467SE-417SR	4X1	1-1/8	1	8	046
467SE-418SR ¹	4X1-1/4	1-3/4	1	8	046
467SE-419SR	4X1-1/2	1-3/4	1	8	046
467SE-420SR	4X2	2-1/4	1	8	046
467SE-421SR ¹	4X2-1/2	3	1	4	046
467SE-422SR	4X3	3	1	4	046
467SE-523SR ¹	6X1/2	1-1/8	1	4	046
467SE-524SR ¹	6X3/4	1-1/8	1	4	046
467SE-525SR	6X1	1-1/8	1	4	046
467SE-526SR ¹	6X1-1/4	2-1/4	1	4	046
467SE-527SR ¹	6X1-1/2	2-1/4	1	4	046
467SE-528SR	6X2	2-1/4	1	4	046
467SE-529SR ¹	6X2-1/2	3	1	4	046
467SE-530SR	6X3	3	1	4	046
467SE-532SR	6X4	4	1	4	046
467SE-573SR ¹	8X1/2	4	1	0	046
467SE-574SR ¹	8X3/4	4	1	0	046

Suitable for Oil-Free air handling to 25 psi, not for distribution of compressed air or gas

JJ DOWNS INDUSTRIAL PLASTICS INC.

international association
of plastics distribution

416.236.1884 Toronto, ON JJ DOWNS.COM



Schedule 40 Fittings Product
Clamp-On Saddles

Clamp-On Saddles

Part Number	Size	Hole Saw Dia	Std Pk	Mstr Ctn	Prod Code
Clamp-On Saddle x SR Thread Single Outlet, PVC White (continued)					
with EPDM O-ring Seal & SS Hardware					
467SE-575SR ¹	8X1	4	1	0	046
467SE-576SR ¹	8X1-1/4	4	1	0	046
467SE-577SR ¹	8X1-1/2	4	1	0	046
467SE-578SR ¹	8X2	4	1	0	046
467SE-579SR ¹	8X2-1/2	4	1	0	046
467SE-580SR ¹	8X3	4	1	0	046
467SE-582SR	8X4	4	1	0	046
467SE-585SR	8X6	6	1	0	046
467SE-624SR	10X4	4	1	0	046
467SE-626SR	10X6	6	1	0	046
467SE-666SR	12X6	6	1	0	046

¹ Outlet-sized with Bushing



Clamp-On Saddle x Soc Double Outlet, PVC White

with Buna-N O-ring Seal & Zinc-Plated Hardware

2"- 4" 235, 6" 200, 8"-12" 150 psi @ 73°F (23°C)

468-247	2X1/2	3/4	1	10	046
468-248	2X3/4	7/8	1	10	046
468-249	2X1	1-1/8	1	10	046
468-250	2X1-1/4	1-1/2	1	10	046
468-251	2X1-1/2	1-1/2	1	10	046
468-291	2-1/2X1-1/2	1-3/4	1	10	046
468-333 ¹	3X1/2	7/8	1	10	046
468-334	3X3/4	7/8	1	10	046
468-335	3X1	1-1/8	1	10	046
468-336 ¹	3X1-1/4	2-1/4	1	10	046
468-337 ¹	3X1-1/2	2-1/4	1	10	046
468-338	3X2	2-1/4	1	10	046
468-415 ¹	4X1/2	1-1/8	1	10	046
468-416 ¹	4X3/4	1-1/8	1	10	046
468-417	4X1	1-1/8	1	8	046
468-418 ¹	4X1-1/4	1-3/4	1	8	046
468-419	4X1-1/2	1-3/4	1	8	046
468-420	4X2	2-1/4	1	8	046
468-421 ¹	4X2-1/2	3	1	4	046
468-422	4X3	3	1	4	046
468-523 ¹	6X1/2	1-1/8	1	4	046
468-524 ¹	6X3/4	1-1/8	1	4	046
468-525	6X1	1-1/8	1	4	046
468-526 ¹	6X1-1/4	2-1/4	1	4	046
468-527 ¹	6X1-1/2	2-1/4	1	4	046
468-528	6X2	2-1/4	1	4	046
468-529 ¹	6X2-1/2	3	1	4	046
468-530	6X3	3	1	4	046
468-532	6X4	4	1	4	046

Part Number	Size	Hole Saw Dia	Std Pk	Mstr Ctn	Prod Code
Clamp-On Saddle x Soc Double Outlet, PVC White (continued)					
with Buna-N O-ring Seal & Zinc-Plated Hardware					
468-573 ¹	8X1/2	4	1	0	046
468-574 ¹	8X3/4	4	1	0	046
468-575 ¹	8X1	4	1	0	046
468-576 ¹	8X1-1/4	4	1	0	046
468-577 ¹	8X1-1/2	4	1	0	046
468-578 ¹	8X2	4	1	0	046
468-579 ¹	8X2-1/2	4	1	0	046
468-580 ¹	8X3	4	1	0	046
468-582	8X4	4	1	0	046
468-585	8X6	6	1	0	046
468-624	10X4	4	1	0	046
468-626	10X6	6	1	0	046
468-664	12X4	4	1	0	046
468-666	12X6	6	1	0	046

¹ Outlet-sized with Bushing



Clamp-On Saddle x Soc Double Outlet, PVC White

with Buna-N O-ring Seal & SS Hardware

2"- 4" 235, 6" 200, 8"-12" 150 psi @ 73°F (23°C)

468S-247	2X1/2	3/4	1	10	046
468S-248	2X3/4	7/8	1	10	046
468S-249	2X1	1-1/8	1	10	046
468S-250	2X1-1/4	1-1/2	1	10	046
468S-251	2X1-1/2	1-1/2	1	10	046
468S-291	2-1/2X1-1/2	1-3/4	1	10	046
468S-333 ¹	3X1/2	7/8	1	10	046
468S-334	3X3/4	7/8	1	10	046
468S-335	3X1	1-1/8	1	10	046
468S-336 ¹	3X1-1/4	2-1/4	1	10	046
468S-337 ¹	3X1-1/2	2-1/4	1	10	046
468S-338	3X2	2-1/4	1	10	046
468S-415 ¹	4X1/2	1-1/8	1	10	046
468S-416 ¹	4X3/4	1-1/8	1	10	046
468S-417	4X1	1-1/8	1	8	046
468S-418 ¹	4X1-1/4	1-3/4	1	8	046
468S-419	4X1-1/2	1-3/4	1	8	046
468S-420	4X2	2-1/4	1	8	046
468S-421 ¹	4X2-1/2	3	1	4	046
468S-422	4X3	3	1	4	046
468S-523 ¹	6X1/2	1-1/8	1	4	046
468S-524 ¹	6X3/4	1-1/8	1	4	046
468S-525	6X1	1-1/8	1	4	046
468S-526 ¹	6X1-1/4	2-1/4	1	4	046
468S-527 ¹	6X1-1/2	2-1/4	1	4	046
468S-528	6X2	2-1/4	1	4	046
468S-529 ¹	6X2-1/2	3	1	4	046
468S-530	6X3	3	1	4	046
468S-532	6X4	4	1	4	046

Suitable for Oil-Free air handling to 25 psi, not for distribution of compressed air or gas

JJ DOWNS INDUSTRIAL PLASTICS INC.

416.236.1884 Toronto, ON JJDOWNS.COM



Schedule 40 Fittings Product
Clamp-On Saddles

Clamp-On Saddles

Part Number	Size	Hole Saw Dia	Std Pk	Mstr Ctn	Prod Code
Clamp-On Saddle x Soc Double Outlet, PVC White (continued) with Buna-N O-ring Seal & SS Hardware					
468S-573 ¹	8X1/2	4	1	0	046
468S-574 ¹	8X3/4	4	1	0	046
468S-575 ¹	8X1	4	1	0	046
468S-576 ¹	8X1-1/4	4	1	0	046
468S-577 ¹	8X1-1/2	4	1	0	046
468S-578 ¹	8X2	4	1	0	046
468S-579 ¹	8X2-1/2	4	1	0	046
468S-580 ¹	8X3	4	1	0	046
468S-582	8X4	4	1	0	046
468S-585	8X6	6	1	0	046
468S-624	10X4	4	1	0	046
468S-626	10X6	6	1	0	046
468S-664	12X4	4	1	0	046
468S-666	12X6	6	1	0	046

¹ Outlet-sized with Bushing.



Clamp-On Saddle x Soc Double Outlet, PVC White

with EPDM O-ring Seal & Zinc-Plated Hardware

2"- 4" 235, 6" 200, 8"-12" 150 psi @ 73°F (23°C)

468E-247	2X1/2	3/4	1	10	046
468E-248	2X3/4	7/8	1	10	046
468E-249	2X1	1-1/8	1	10	046
468E-250	2X1-1/4	1-1/2	1	10	046
468E-251	2X1-1/2	1-1/2	1	10	046
468E-291	2-1/2X1-1/2	1-3/4	1	10	046
468E-333 ¹	3X1/2	7/8	1	10	046
468E-334	3X3/4	7/8	1	10	046
468E-335	3X1	1-1/8	1	10	046
468E-336 ¹	3X1-1/4	2-1/4	1	10	046
468E-337 ¹	3X1-1/2	2-1/4	1	10	046
468E-338	3X2	2-1/4	1	10	046
468E-415 ¹	4X1/2	1-1/8	1	10	046
468E-416 ¹	4X3/4	1-1/8	1	10	046
468E-417	4X1	1-1/8	1	8	046
468E-418 ¹	4X1-1/4	1-3/4	1	8	046
468E-419	4X1-1/2	1-3/4	1	8	046
468E-420	4X2	2-1/4	1	8	046
468E-421 ¹	4X2-1/2	3	1	4	046
468E-422	4X3	3	4	0	046
468E-523 ¹	6X1/2	1-1/8	1	4	046
468E-524 ¹	6X3/4	1-1/8	1	4	046
468E-525	6X1	1-1/8	1	4	046
468E-526 ¹	6X1-1/4	2-1/4	1	4	046
468E-527 ¹	6X1-1/2	2-1/4	1	4	046
468E-528	6X2	2-1/4	1	4	046
468E-529 ¹	6X2-1/2	3	1	4	046

Part Number	Size	Hole Saw Dia	Std Pk	Mstr Ctn	Prod Code
Clamp-On Saddle x Soc Double Outlet, PVC White (continued) with EPDM O-ring Seal & Zinc-Plated Hardware					
468E-530	6X3	3	1	4	046
468E-532	6X4	4	1	4	046
468E-573 ¹	8X1/2	4	1	0	046
468E-574 ¹	8X3/4	4	1	0	046
468E-575 ¹	8X1	4	1	0	046
468E-576 ¹	8X1-1/4	4	1	0	046
468E-577 ¹	8X1-1/2	4	1	0	046
468E-578 ¹	8X2	4	1	0	046
468E-579 ¹	8X2-1/2	4	1	0	046
468E-580 ¹	8X3	4	1	0	046
468E-582	8X4	4	1	0	046
468E-585	8X6	6	1	0	046
468E-624	10X4	4	1	0	046
468E-626	10X6	6	1	0	046
468E-664	12X4	4	1	0	046
468E-666	12X6	6	1	0	046

¹ Outlet-sized with Bushing.



Clamp-On Saddle x Soc Double Outlet, PVC White

with EPDM O-ring Seal & SS Hardware

2"- 4" 235, 6" 200, 8"-12" 150 psi @ 73°F (23°C)

468SE-247	2X1/2	3/4	1	10	046
468SE-248	2X3/4	7/8	1	10	046
468SE-249	2X1	1-1/8	1	10	046
468SE-250	2X1-1/4	1-1/2	1	10	046
468SE-251	2X1-1/2	1-1/2	1	10	046
468SE-291	2-1/2X1-1/2	1-3/4	1	10	046
468SE-333 ¹	3X1/2	7/8	1	10	046
468SE-334	3X3/4	7/8	1	10	046
468SE-335	3X1	1-1/8	1	10	046
468SE-336 ¹	3X1-1/4	2-1/4	1	10	046
468SE-337 ¹	3X1-1/2	2-1/4	1	10	046
468SE-338	3X2	2-1/4	1	10	046
468SE-415 ¹	4X1/2	1-1/8	1	10	046
468SE-416 ¹	4X3/4	1-1/8	1	10	046
468SE-417	4X1	1-1/8	1	8	046
468SE-418 ¹	4X1-1/4	1-3/4	1	8	046
468SE-419	4X1-1/2	1-3/4	1	8	046
468SE-420	4X2	2-1/4	1	8	046
468SE-421 ¹	4X2-1/2	3	1	4	046
468SE-422	4X3	3	4	0	046
468SE-523 ¹	6X1/2	1-1/8	1	4	046
468SE-524 ¹	6X3/4	1-1/8	1	4	046
468SE-525	6X1	1-1/8	1	4	046
468SE-526 ¹	6X1-1/4	2-1/4	1	4	046
468SE-527 ¹	6X1-1/2	2-1/4	1	4	046
468SE-528	6X2	2-1/4	1	4	046
468SE-529 ¹	6X2-1/2	3	1	4	046

Suitable for Oil-Free air handling to 25 psi, not for distribution of compressed air or gas

JJ DOWNS INDUSTRIAL PLASTICS INC.

416.236.1884 Toronto, ON JJDOWNS.COM



Schedule 40 Fittings Product
Clamp-On Saddles

Clamp-On Saddles

Part Number	Size	Hole Saw Dia	Std Pk	Mstr Ctn	Prod Code
Clamp-On Saddle x Soc Double Outlet, PVC White (continued)					
with EPDM O-ring Seal & SS Hardware					
468SE-530	6X3	3	1	4	046
468SE-532	6X4	4	1	4	046
468SE-573 ¹	8X1/2	4	1	0	046
468SE-574 ¹	8X3/4	4	1	0	046
468SE-575 ¹	8X1	4	1	0	046
468SE-576 ¹	8X1-1/4	4	1	0	046
468SE-577 ¹	8X1-1/2	4	1	0	046
468SE-578 ¹	8X2	4	1	0	046
468SE-579 ¹	8X2-1/2	4	1	0	046
468SE-580 ¹	8X3	4	1	0	046
468SE-582	8X4	4	1	0	046
468SE-585	8X6	6	1	0	046
468SE-624	10X4	4	1	0	046
468SE-626	10X6	6	1	0	046
468SE-664	12X4	4	1	0	046
468SE-666	12X6	6	1	0	046

¹ Outlet-sized with Bushing



Clamp-On Saddle x SR Thread Double Outlet, PVC White

with Buna-N O-ring Seal & Zinc-Plated Hardware

2"- 4" 235, 6" 200, 8"-12" 150 psi @ 73°F (23°C)

469-247SR	2X1/2	3/4	1	10	046
469-248SR	2X3/4	7/8	1	10	046
469-249SR	2X1	1-1/8	1	10	046
469-250SR	2X1-1/4	1-1/2	1	10	046
469-251SR	2X1-1/2	1-1/2	1	10	046
469-291SR	2-1/2X1-1/2	1-3/4	1	10	046
469-333SR ¹	3X1/2	7/8	1	10	046
469-334SR	3X3/4	7/8	1	10	046
469-335SR	3X1	1-1/8	1	10	046
469-336SR ¹	3X1-1/4	2-1/4	1	10	046
469-337SR ¹	3X1-1/2	2-1/4	1	10	046
469-338SR	3X2	2-1/4	1	10	046
469-415SR ¹	4X1/2	1-1/8	1	10	046
469-416SR ¹	4X3/4	1-1/8	1	10	046
469-417SR	4X1	1-1/8	1	8	046
469-418SR ¹	4X1-1/4	1-3/4	1	8	046
469-419SR	4X1-1/2	1-3/4	1	8	046
469-420SR	4X2	2-1/4	1	8	046
469-421SR ¹	4X2-1/2	3	1	4	046
469-422SR	4X3	3	1	4	046
469-523SR ¹	6X1/2	1-1/8	1	4	046
469-524SR ¹	6X3/4	1-1/8	1	4	046
469-525SR	6X1	1-1/8	1	4	046
469-526SR ¹	6X1-1/4	2-1/4	1	4	046
469-527SR ¹	6X1-1/2	2-1/4	1	4	046

Part Number	Size	Hole Saw Dia	Std Pk	Mstr Ctn	Prod Code
Clamp-On Saddle x SR Thread Double Outlet, PVC White (continued)					
with Buna-N O-ring Seal & Zinc-Plated Hardware					
469-528SR	6X2	2-1/4	1	4	046
469-529SR ¹	6X2-1/2	3	1	4	046
469-530SR	6X3	3	1	4	046
469-532SR	6X4	4	1	4	046
469-573SR ¹	8X1/2	4	1	0	046
469-574SR ¹	8X3/4	4	1	0	046
469-575SR ¹	8X1	4	1	0	046
469-576SR ¹	8X1-1/4	4	1	0	046
469-577SR ¹	8X1-1/2	4	1	0	046
469-578SR ¹	8X2	4	1	0	046
469-579SR ¹	8X2-1/2	4	1	0	046
469-580SR ¹	8X3	4	1	0	046
469-582SR	8X4	4	1	0	046
469-585SR	8X6	6	1	0	046
469-624SR	10X4	4	1	0	046
469-626SR	10X6	6	1	0	046
469-664SR	12X4	4	1	0	046
469-666SR	12X6	6	1	0	046

¹ Outlet-sized with Bushing



Clamp-On Saddle x SR Thread Double Outlet, PVC White

with Buna-N O-ring Seal & SS Hardware

2"- 4" 235, 6" 200, 8"-12" 150 psi @ 73°F (23°C)

469S-247SR	2X1/2	3/4	1	10	046
469S-248SR	2X3/4	7/8	1	10	046
469S-249SR	2X1	1-1/8	1	10	046
469S-250SR	2X1-1/4	1-1/2	1	10	046
469S-251SR	2X1-1/2	1-1/2	1	10	046
469S-291SR	2-1/2X1-1/2	1-3/4	1	10	046
469S-333SR ¹	3X1/2	7/8	1	10	046
469S-334SR	3X3/4	7/8	1	10	046
469S-335SR	3X1	1-1/8	1	10	046
469S-336SR ¹	3X1-1/4	2-1/4	1	10	046
469S-337SR ¹	3X1-1/2	2-1/4	1	10	046
469S-338SR	3X2	2-1/4	1	10	046
469S-415SR ¹	4X1/2	1-1/8	1	10	046
469S-416SR ¹	4X3/4	1-1/8	1	10	046
469S-417SR	4X1	1-1/8	1	8	046
469S-418SR ¹	4X1-1/4	1-3/4	1	8	046
469S-419SR	4X1-1/2	1-3/4	1	8	046
469S-420SR	4X2	2-1/4	1	8	046
469S-421SR ¹	4X2-1/2	3	1	4	046
469S-422SR	4X3	3	4	0	046
469S-523SR ¹	6X1/2	1-1/8	1	4	046
469S-524SR ¹	6X3/4	1-1/8	1	4	046
469S-525SR	6X1	1-1/8	1	4	046
469S-526SR ¹	6X1-1/4	2-1/4	1	4	046

Suitable for Oil-Free air handling to 25 psi, not for distribution of compressed air or gas

International Association of Plastics Distribution

JJ DOWNS INDUSTRIAL PLASTICS INC.

416.236.1884 Toronto, ON JJDOWNS.COM



Schedule 40 Fittings Product
Clamp-On Saddles

Clamp-On Saddles

Part Number	Size	Hole Saw Dia	Std Pk	Mstr Ctn	Prod Code
Clamp-On Saddle x SR Thread Double Outlet, PVC White (continued)					
with Buna-N O-ring Seal & SS Hardware					
469S-527SR ¹	6X1-1/2	2-1/4	1	4	046
469S-528SR	6X2	2-1/4	1	4	046
469S-529SR ¹	6X2-1/2	3	1	4	046
469S-530SR	6X3	3	1	4	046
469S-532SR	6X4	4	1	4	046
469S-573SR ¹	8X1/2	4	1	0	046
469S-574SR ¹	8X3/4	4	1	0	046
469S-575SR ¹	8X1	4	1	0	046
469S-576SR ¹	8X1-1/4	4	1	0	046
469S-577SR ¹	8X1-1/2	4	1	0	046
469S-578SR ¹	8X2	4	1	0	046
469S-579SR ¹	8X2-1/2	4	1	0	046
469S-580SR ¹	8X3	4	1	0	046
469S-582SR	8X4	4	1	0	046
469S-585SR	8X6	6	1	0	046
469S-624SR	10X4	4	1	0	046
469S-626SR	10X6	6	1	0	046
469S-664SR	12X4	4	1	0	046
469S-666SR	12X6	6	1	0	046

¹ Outlet-sized with Bushing



Clamp-On Saddle x SR Thread Double Outlet, PVC White

with EPDM O-ring Seal & Zinc-Plated Hardware

2"- 4" 235, 6" 200, 8"-12" 150 psi @ 73°F (23°C)

469E-247SR	2X1/2	3/4	1	10	046
469E-248SR	2X3/4	7/8	1	10	046
469E-249SR	2X1	1-1/8	1	10	046
469E-250SR	2X1-1/4	1-1/2	1	10	046
469E-251SR	2X1-1/2	1-1/2	1	10	046
469E-291SR	2-1/2X1-1/2	1-3/4	1	10	046
469E-333SR ¹	3X1/2	7/8	1	10	046
469E-334SR	3X3/4	7/8	1	10	046
469E-335SR	3X1	1-1/8	1	10	046
469E-336SR ¹	3X1-1/4	2-1/4	1	10	046
469E-337SR ¹	3X1-1/2	2-1/4	1	10	046
469E-338SR	3X2	2-1/4	1	16	046
469E-415SR ¹	4X1/2	1-1/8	1	10	046
469E-416SR ¹	4X3/4	1-1/8	1	10	046
469E-417SR	4X1	1-1/8	1	8	046
469E-418SR ¹	4X1-1/4	1-3/4	1	8	046
469E-419SR	4X1-1/2	1-3/4	1	8	046
469E-420SR	4X2	2-1/4	1	8	046
469E-421SR ¹	4X2-1/2	3	1	4	046
469E-422SR	4X3	3	4	0	046
469E-523SR ¹	6X1/2	1-1/8	1	4	046

Part Number	Size	Hole Saw Dia	Std Pk	Mstr Ctn	Prod Code
Clamp-On Saddle x SR Thread Double Outlet, PVC White (continued)					
with EPDM O-ring Seal & Zinc-Plated Hardware					
469E-524SR ¹	6X3/4	1-1/8	1	4	046
469E-525SR	6X1	1-1/8	1	4	046
469E-526SR ¹	6X1-1/4	2-1/4	1	4	046
469E-527SR ¹	6X1-1/2	2-1/4	1	4	046
469E-528SR	6X2	2-1/4	1	4	046
469E-529SR ¹	6X2-1/2	3	1	4	046
469E-530SR	6X3	3	1	4	046
469E-532SR	6X4	4	1	4	046
469E-573SR ¹	8X1/2	4	1	0	046
469E-574SR ¹	8X3/4	4	1	0	046
469E-575SR ¹	8X1	4	1	0	046
469E-576SR ¹	8X1-1/4	4	1	0	046
469E-577SR ¹	8X1-1/2	4	1	0	046
469E-578SR	8X2	4	1	0	046
469E-579SR ¹	8X2-1/2	4	1	0	046
469E-580SR ¹	8X3	4	1	0	046
469E-582SR	8X4	4	1	0	046
469E-585SR	8X6	6	1	0	046
469E-624SR	10X4	4	1	0	046
469E-626SR	10X6	6	1	0	046
469E-666SR	12X6	6	1	0	046

¹ Outlet-sized with Bushing



Clamp-On Saddle x SR Thread Double Outlet, PVC White

with EPDM O-ring Seal & SS Hardware

2"- 4" 235, 6" 200, 8"-12" 150 psi @ 73°F (23°C)

469SE-247SR	2X1/2	3/4	1	10	046
469SE-248SR	2X3/4	7/8	1	10	046
469SE-249SR	2X1	1-1/8	1	10	046
469SE-250SR	2X1-1/4	1-1/2	1	10	046
469SE-251SR	2X1-1/2	1-1/2	1	10	046
469SE-291SR	2-1/2X1-1/2	1-3/4	1	10	046
469SE-333SR ¹	3X1/2	7/8	1	10	046
469SE-334SR	3X3/4	7/8	1	10	046
469SE-335SR	3X1	1-1/8	1	10	046
469SE-336SR ¹	3X1-1/4	2-1/4	1	10	046
469SE-337SR ¹	3X1-1/2	2-1/4	1	10	046
469SE-338SR	3X2	2-1/4	1	10	046
469SE-415SR ¹	4X1/2	1-1/8	1	10	046
469SE-416SR ¹	4X3/4	1-1/8	1	10	046
469SE-417SR	4X1	1-1/8	1	8	046
469SE-418SR ¹	4X1-1/4	1-3/4	1	8	046
469SE-419SR	4X1-1/2	1-3/4	1	8	046
469SE-420SR	4X2	2-1/4	1	8	046
469SE-421SR ¹	4X2-1/2	3	1	4	046
469SE-422SR	4X3	3	4	0	046
469SE-523SR ¹	6X1/2	1-1/8	1	4	046

Suitable for Oil-Free air handling to 25 psi, not for distribution of compressed air or gas

JJ DOWNS INDUSTRIAL PLASTICS INC.

416.236.1884
Toronto, ON
JJDOWNS.COM



Schedule 40 Fittings Product
Clamp-On Saddles & Hot-Tap Saddles

Clamp-On Saddles

Part Number	Size	Hole Saw Dia	Std Pk	Mstr Ctn	Prod Code
-------------	------	--------------	--------	----------	-----------

Clamp-On Saddle x SR Thread Double Outlet, PVC White
(continued)

with EPDM O-ring Seal & SS Hardware

469SE-524SR ¹	6X3/4	1-1/8	1	4	046
469SE-525SR	6X1	1-1/8	1	4	046
469SE-526SR ¹	6X1-1/4	2-1/4	1	4	046
469SE-527SR ¹	6X1-1/2	2-1/4	1	4	046
469SE-528SR	6X2	2-1/4	1	4	046
469SE-529SR ¹	6X2-1/2	3	1	4	046
469SE-530SR	6X3	3	1	4	046
469SE-532SR	6X4	4	1	4	046
469SE-573SR ¹	8X1/2	4	1	0	046
469SE-574SR ¹	8X3/4	4	1	0	046
469SE-575SR ¹	8X1	4	1	0	046
469SE-576SR ¹	8X1-1/4	4	1	0	046
469SE-577SR ¹	8X1-1/2	4	1	0	046
469SE-578SR ¹	8X2	4	1	0	046
469SE-579SR ¹	8X2-1/2	4	1	0	046
469SE-580SR ¹	8X3	4	1	0	046
469SE-582SR	8X4	4	1	0	046
469SE-585SR	8X6	6	1	0	046
469SE-624SR	10X4	4	1	0	046
469SE-626SR	10X6	6	1	0	046
469SE-664SR	12X4	4	1	0	046
469SE-666SR	12X6	6	1	0	046

¹ Outlet-sized with Bushing

Hot-Tap Saddles

Hot-Tap Saddle, PVC White

EPDM Saddle x Soc (Spigot) Zinc Plated Bolts



2"- 4" 235, 6" 200, 8" 150 psi @ 73°F (23°C)

HT2-248W	2X3/4 (1)	1	5	049
HT2-251W	2X1-1/2 (2)	1	5	049
HT2-288W	2-1/2X3/4 (1)	1	5	049
HT2-291W	2-1/2x1-1/2 (2)	1	5	049
HT2-334W	3X3/4 (1)	1	5	049
HT2-337W	3X1-1/2 (2)	1	5	049
HT2-416W	4X3/4 (1)	1	0	049
HT2-419W	4X1-1/2 (2)	1	0	049
HT2-524W	6X3/4 (1)	1	0	049
HT2-527W	6X1-1/2 (2)	1	0	049
HT2-574W	8X3/4 (1)	1	0	049
HT2-577W	8X1-1/2 (2)	1	0	049

Not intended to convey or dispense water for human consumption through drinking or cooking

Part Number	Size	Std Pk	Mstr Ctn	Prod Code
-------------	------	--------	----------	-----------

Hot-Tap Saddle, PVC White

EPDM Saddle x Soc (Spigot) SS316 Bolts



2"- 4" 235, 6" 200, 8" 150 psi @ 73°F (23°C)

HT2S-248W	2X3/4 (1)	1	5	049
HT2S-251W	2X1-1/2 (2)	1	5	049
HT2S-288W	2-1/2X3/4 (1)	1	5	049
HT2S-291W	2-1/2X1-1/2 (2)	1	5	049
HT2S-334W	3X3/4 (1)	1	5	049
HT2S-337W	3X1-1/2 (2)	1	5	049
HT2S-416W	4X3/4 (1)	1	5	049
HT2S-419W	4X1-1/2 (2)	1	0	049
HT2S-524W	6X3/4 (1)	1	5	049
HT2S-527W	6X1-1/2 (2)	1	0	049
HT2S-574W	8X3/4 (1)	1	0	049
HT2S-577W	8X1-1/2 (2)	1	0	049

Not intended to convey or dispense water for human consumption through drinking or cooking

Suitable for Oil-Free air handling to 25 psi, not for distribution of compressed air or gas

JJ DOWNS INDUSTRIAL PLASTICS INC.

416.236.1884
Toronto, ON
JJDOWNS.COM