

Type 760 Diaphragm Valves



manual operation

SERIES: Type 760

SIZES: 1/2" – 4"

ENDS: True Union Socket, Threaded or ChemFlare™¹ Spigot² bodies with Plain, Socket, Threaded or Flanged ends

DIAPHRAGMS: EPDM³, FKM-B (Viton®) or PTFE



True Union Body

The Type 760 Manual Diaphragm Valve is part of the 700 Series of diaphragm valves. 700 Series valves have modular design and interchangeable bodies, diaphragms and actuators. The Type 760 features compact size and all plastic construction for corrosion resistance and light weight. Being a diaphragm valve it is suitable for sanitary or slurry applications. Because it is slow closing, water hammer problems are eliminated. This is also a good throttling valve. With a PTFE diaphragm, it has corrosion resistance superior to ball or butterfly valves.

When a few manual valves are required on a system using the pneumatically actuated 700 Series, the Type 760 is a good choice because the bodies and diaphragms are the same.

features

Solid Plastic Body and Actuator

- Light weight
- Corrosion resistant inside and out

Excellent for Sanitary Applications

- Self draining
- PVDF and unpigmented PP bodies are approved for food applications
- Sanitary clamp end connections are available

Butt Fusion Ends available

- Spigot bodies are available 1/2" to 3" for direct butt fusion into PP and PVDF piping systems. All mechanical connections may be eliminated.

Modular Construction

- Only 5 actuator and diaphragm sizes for 9 valve sizes. Spare parts requirements are minimized.

No Maintenance

- Elastomer diaphragms have life well over one million cycles, but if necessary they are easy to replace

JJD

JJ DOWNS INDUSTRIAL PLASTICS INC

416.236.1884

JJDOWNS.COM

Toronto, ON

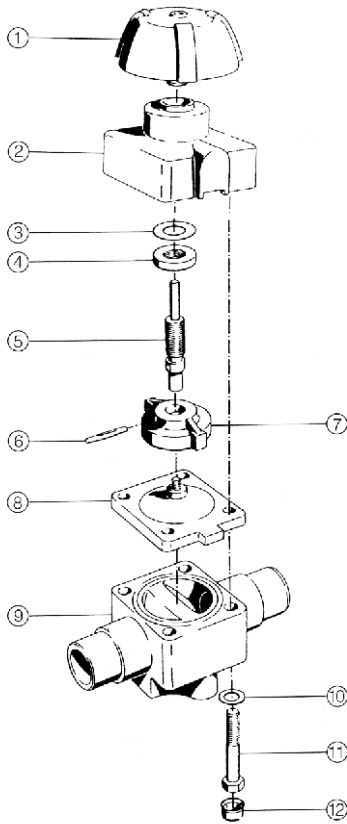


¹ For ChemFlare™ end connectors, consult JJ DOWNS INDUSTRIAL PLASTICS INC.

² PP and PVDF spigot ends have metric dimensions and will butt fuse directly to PP and PVDF piping systems. PVC spigots are ANSI.

³ Epoxy cured EPDM

Type 760 Diaphragm Valves

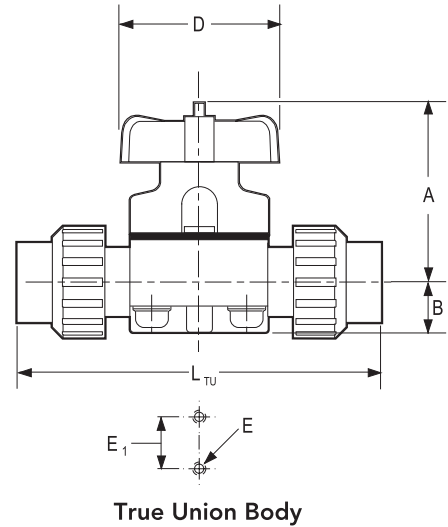


PARTS

▲ Recommended Spare Parts

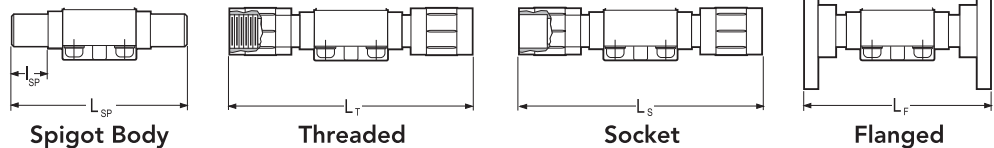
No.	Part	Pcs.	Materials
1	Handwheel with Sleeve	1	PPG/Brass
2	Bonnet	1	PPG
3	Compression Bearing	1	Delrin
4	Nut	1	Stainless Steel
5	Spindle	1	Stainless Steel
6	Spring Pin	1	Spring Steel
7	Compressor	1	PBTP
8▲	Process Diaphragm	1	EPDM, FKM-B (Viton®), PTFE
9	Valve Body	1	PVC, PP, PVDF CPVC
10	Washer	4 ¹	304 SS
11	Hex Bolt	4 ¹	304 SS
12	Bolt Cap	4 ¹	PE

18 pieces for 2-1/2" and 3", 12 pieces for 4" valves



True Union Body

NON UNION ENDS



DIMENSIONS INCHES

C_v WEIGHTS VALUES

Size	A	B	D	E	E ₁	I _{SP}	Union Soc Spig Soc ¹ Thd ¹				PVC/CPVC		PP/PVDF		Pounds	C _v
							L _{TU}	L _{SP}	L _S	L _T	Flg ¹ L _F	Flg ¹ L _F	Flg ² "S" ² L _{FS}			
1/2	3.7	1.0	3.5	M6	1.0	0.9	6.4	5.5	7.5	7.3	5.8	7.4	-	1.5	6.5	
3/4	3.7	1.0	3.5	M6	1.0	1.1	6.6	5.7	8.1	7.5	6.0	7.6	5.9	1.5	9.6	
1	3.7	1.0	3.5	M6	1.0	1.2	7.1	6.1	8.6	8.3	6.3	8.0	5.9	1.5	12.	
1-1/4	4.9	1.6	4.5	M8	1.8	1.3	8.1	6.9	9.5	9.1	7.2	8.8	6.4	3.3	21.	
1-1/2	4.9	1.6	4.5	M8	1.8	1.4	9.2	7.6	10.8	10.8	8.1	9.5	6.9	3.3	29.	
2	5.8	1.6	5.5	M8	1.8	1.5	10.8	8.9	12.2	11.2	9.4	10.8	7.9	5.3	54.	
2-1/2	10.2	2.2	8.5	M12	3.9	1.7	-	11.2	15.1	14.7	11.8	13.1	-	16.5	91.	
3	10.2	2.2	8.5	M12	3.9	2.0	17.6 ³	11.8	16.0	15.7	12.6	14.9	10.4	16.5	140.	
4	11.9	2.5	9.8	M22	4.7	2.3	-	13.5	18.5	17.4	13.9	16.6	-	33.0	220.	

¹ Socket, Threaded and Flanged fabricated are for PVC and CPVC valves only.
Consult JJ DOWNS INDUSTRIAL PLASTICS INC. for PP or PVDF fabricated spigot body dimensions.

Weights are for PVC Spigot valves.

² Flanged "S" = ITT Saunders plastic lined valve length.
³ 3" Union socket body is fabricated using a spigot body.

ORDERING EXAMPLE

Diaphragm Valves	760		010			A	E	U
Size	005 - 1/2"	007 - 3/4"	010 - 1"	012 - 1-1/4"				
	015 - 1-1/2"	020 - 2"	025 - 2-1/2"	030 - 3"	040 - 4"			
Body Material	A - PVC	B - PP	C - CPVC	K - PVDF				
Diaphragm	E - EPDM	B - Nitrile	V - FKM-B (Viton®)					
	P - PTFE one-piece ¹		P2 - PTFE two-piece					
Ends	Blank - Spigot (Butt)		S - Socket	T - Threaded	F - Flanged	U - Union Socket	CF - ChemFlare™	

Example: Type 760 Diaphragm Valve, 1" PVC body, EPDM diaphragm, Socket Union ends.

¹PTFE one-piece diaphragm is supplied standard.

JJ DOWNS INDUSTRIAL PLASTICS INC.

JJDOWNS.COM