

MAINTENANCE INSTRUCTIONS
For 730 Series (formerly 700 Series) Normally Open
and Double Acting Diaphragm Valves Sizes 1/2” - 4”

Maintenance (all sizes)

Refer to **ASSEMBLY DRAWING NODV REV 0.** And proceed as follows:

1. Remove plug (20) and threaded plug (1).
2. Lift off o-ring (2) and cover (3).
3. Undo lock nut (15) and washer (14).
4. Lift off spring support plate (13) and washer (12).
5. Remove o-ring (10) and spacing ring (11), if present (not on all models).
6. Remove control diaphragm (9) and washer (8).
7. Diaphragm support (7) lifts off from the spindle (6).
8. Remove spring washer (16) and guard ring (17) from bottom of spindle (6).
9. Remove plug (29), int hex screw (22) and washer (21) from lower part (18) of valve.
10. Remove protective cap (28), hex screw (27) and washer (26).
11. Spindle bearing (19), compressor (23) and diaphragm (24) will separate from valve body (25).
12. Inspect diaphragm and all parts for wear and abrasion.



JJD



JJ DOWNS INDUSTRIAL PLASTICS INC.

416.236.1884

Toronto, ON

JJDOWNS.COM

Maintenance Instructions N/O 730 Series Diaphragm Valve cont.

13. Replace parts as necessary.
14. Before re-assembling valve lubricate spindle (6), Dow Corning III silicone or equivalent recommended.
15. To re-assemble valve follow steps 1 through 11 in reverse order, tightening to the bolt torques recommended in the chart below.

IMPORTANT

When re-assembling valve ensure that holes in lower part (18) of valve, diaphragm (24) and cover (3) are in line. When tightening diaphragm, if it stops turning before its tab lines up with that on the actuator, unscrew diaphragm totally until it backs off one screw thread, then retighten. The tab should now line up with that on the actuator. Also if attaching to actuator ensure all screw holes line up.

VALVE SIZE	DIAPHRAGM MATERIAL BOLT TORQUE (IN-LB)		
	EPDM	Viton	Teflon
½	44	44	44
¾	44	44	44
1	44	44	44
1-1/4"	80	80	106
1-1/2"	80	80	106
2	124	124	159
2-1/2"	354	354	443
3"	354	354	443
4"	266	266	354



JJD

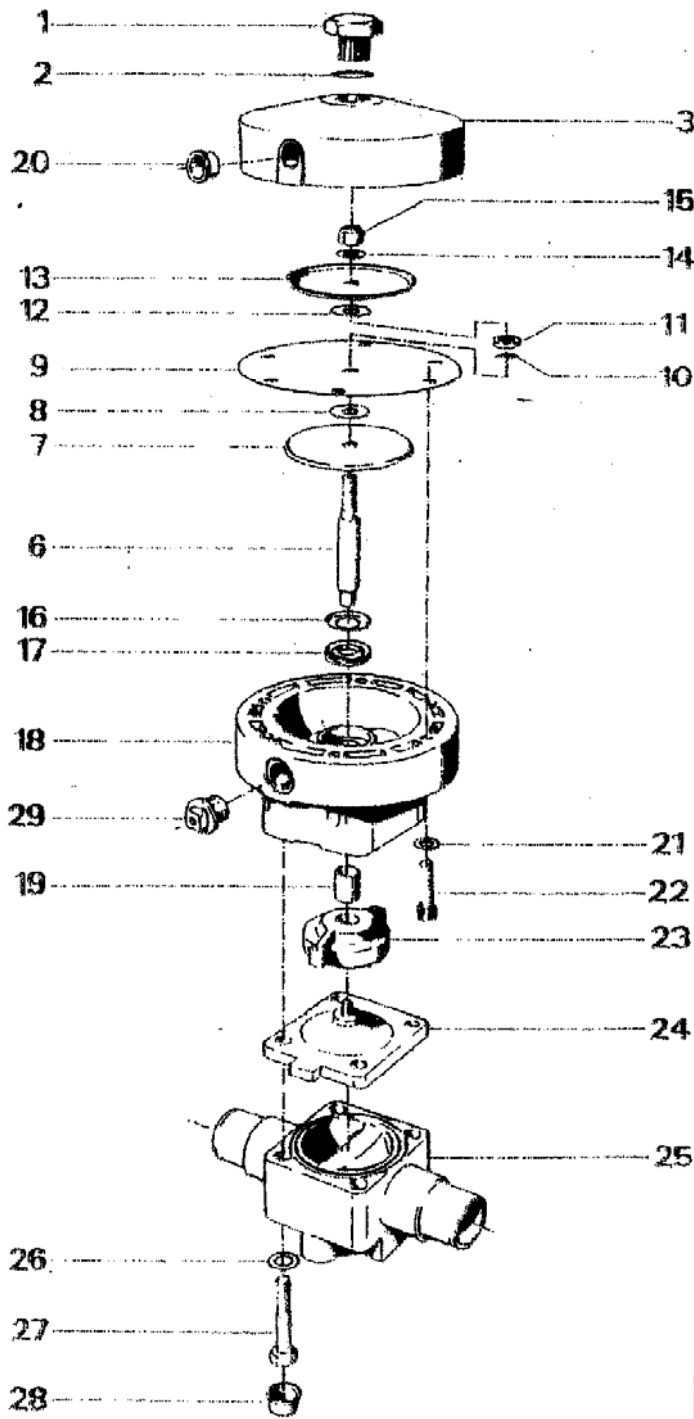


JJ DOWNS INDUSTRIAL PLASTICS INC.

416.236.1884

Toronto, ON

JJDOWNS.COM



PT#	DESCRIPTION	MATERIAL
1	THREADED PLUG	AL
2	O-RING	PERBUNAN (NBR)
3	COVER	PP GLASS
6	SPINDEL	STEEL 1.4104
7	DIAPH. SUPPORT	
	PLATE	STEEL (Cad Plated)
8	WASHER	PERBUNAN (NBR)
9	CONTROL DIAPH.	NEOPRENE (CR)
10	O-RING	PERBUNAN (NBR)
11	SPACING RING	STEEL (Cad Plated)
12	WASHER	PERBUNAN (NBR)
13	SPRING SUPPORT	
	PLATE	STEEL (Cad Plated)
14	WASHER	STEEL (Cad Plated)
15	LOCK-NUT	M8.8 (Cad Plated)
16	SPRING WASHER	MS
17	QUAD RING	PERBUNAN (NBR)
18	LOWER PART	PP/GLASS
19	SPINDEL BEARING	METAL/TEFLON
20	PLUG	PE
21	WASHER	STEEL (Cad Plated)
22	INT. HEX SCREW	M8.8 (Cad Plated)
23	COMPRESSOR	PPTB
24	DIAPHRAGM	VARIABLE
25	VALVE BODY	VARIABLE
26	WASHER	STEEL (Cad Plated)
27	HEX SCREW	M8.8 (Cad Plated)
28	PROTECTIVE CAP	PE

DATE		DWG. NO.		REV.
		NODV		0
SCALE	DR. BY	CHKD. BY	APP. BY	
TITLE			REFERENCE	
CHEMLINE 700 SERIES NORMALLY OPEN			DIAPHRAGM VALVE SIZES 1/2" - 4"	



MAINTENANCE INSTRUCTIONS
For 730 (formerly 700) Series Normally Closed Diaphragm Valve
Sizes 1/2” to 4”

Maintenance (all sizes)

Refer to **ASSEMBLY DRAWING NCDV REV 0.** And proceed as follows:

1. Remove plug (1) and cover (2).
2. Release springs (3), (4) and (5).
3. Undo lock nut (15) and washer (14).
4. Lift off spring support plate (13) and washer (12).
5. Remove o-ring (10) and spacing ring (11), if present (not on all models).
6. Remove control diaphragm (9) and washer (8).
7. Diaphragm support plate (7) lifts off from the spindle (6).
8. Remove spring washer (16) and quad ring (17) from bottom of spindle (6).
9. Remove plug (20), int. hex screw (22) and washer (21) from lower part (18) of valve.
10. Remove protective cap (28) hex screw (27) and washer (26).
11. Spindle bearing (19), compressor (23) and diaphragm (24) will separate from valve body (25).
12. Inspect diaphragm (24) and all parts for wear or abrasion.



JJ DOWNS INDUSTRIAL PLASTICS INC.

416.236.1884

Toronto, ON

JJDOWNS.COM

Maintenance Instructions N/C 730 Series Diaphragm Valve cont.

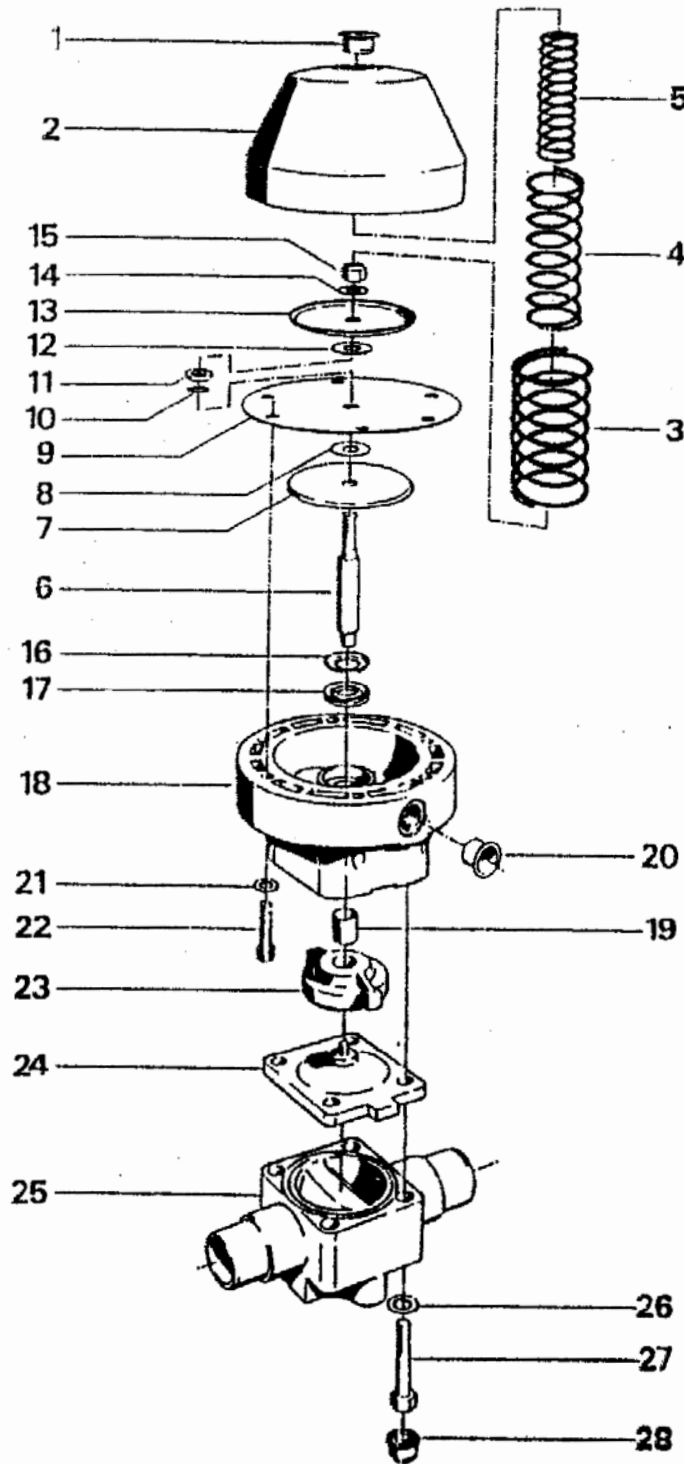
13. Replace parts as necessary.
14. Before re-assembling valve lubricate spindle (6), Dow Corning Silicone III or equivalent recommended.
15. To re-assemble valve follow steps 1 through 11 in reverse order, tightening to the bolt torques recommended in the chart below.

IMPORTANT

When re-assembling valve ensure that holes in lower part (18) of valve, diaphragm (24) and cover (3) are in line. When tightening diaphragm, if it stops turning before its tab lines up with that on the actuator, unscrew diaphragm totally until it backs off one screw thread, then retighten. The tab should now line up with that on the actuator. Also if attaching to actuator ensure all screw holes line up.

VALVE SIZE	DIAPHRAGM MATERIAL BOLT TORQUE (IN-LB)		
	EPDM	Viton	Teflon
½	44	44	44
¾	44	44	44
1	44	44	44
1-1/4"	80	80	106
1-1/2"	80	80	106
2	124	124	159
2-1/2"	354	354	443
3"	354	354	443
4"	266	266	354

		
JJ DOWNS INDUSTRIAL PLASTICS INC.		
416.236.1884	Toronto, ON	JJDOWN.COM



PART	DESCRIPTION	MATERIAL
1	PLUG	PP/GLASS
2	COVER	SP. STEEL
3	SPRING (outer)	SP. STEEL
4	SPRING (middle)	SP. STEEL
5	SPRING (inner)	SP. STEEL
6	SPINDEL	STEEL
7	DIAPH. SUPPORT	CAD PLATED
	PLATE	STEEL
8	WASHER	PERBUNAN
9	CONTROL DIAPH.	NEOPRENE
10	O-RING	PERBUNAN
11	SPACING RING	STEEL
12	WASHER	CAD PLATED
13	SPRING SUPPORT	STEEL
	PLATE	CAD PLATED
14	WASHER	STEEL
		CAD PLATED

PART	DESCRIPTION	MATERIAL
14	WASHER	STEEL
		CAD PLATED
15	LOCK NUT	M.8.8. CAD
		PLATED
16	SPRING WASH.	MS
17	QUAD RING	PERBUNAN
18	LOWER PART	PP/GLASS
19	SPINDEL BEAR.	METAL/TEFLON
20	PLUG	PE
21	WASHER	STEEL
		CAD PLATED
22	INT. HEX.	M.8.8. CAD
	SCREW	PLATED
23	COMPRESSOR	PBTP
24	DIAPHRAGM	VARIABLE
25	VALVE BODY	VARIABLE
26	WASHER	STEEL
		CAD PLATED
27	HEX SCREW	M.8.8.
		CAD PLATED
28	PROTECTIVE	PE
	CAP	

REV.	0
DWG. NO.	NCDV
DATE	
SCALE	700 SERIES NOMALLY CLOSED
DR. BY	
CHKD. BY	
APP. BY	
TITLE	DIAPHRAGM VALVE SIZES 1/2"-4"
REFERENCE	

