

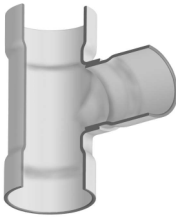


**Drain, Waste & Vent (DWV) Product**  
**PVC Schedule 40 & 80 DWV Fabricated Fittings**

Schedule 80 PVC Fabricated DWV pattern fittings do not meet Model Plumbing Codes. Verify suitability with local code authority.

**Tees**

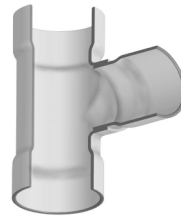
Size	SCH 40 DWV	SCH 80 DWV
	Prod Code: 390 Part Number	Prod Code: 400 Part Number
<b>TEE (Socket x Socket x Socket)</b>		
6	3701-060	3901-060
6X2	3701-528	3901-528
6X3	3701-530	3901-530
6X4	3701-532	3901-532
8	3701-080	3901-080
8X2	3701-578	3901-578
8X3	3701-580	3901-580
8X4	3701-582	3901-582
8X6	3701-585	3901-585
10	3701-100	3901-100
10X2	3701-621	3901-621
10X3	3701-623	3901-623
10X4	3701-624	3901-624
10X6	3701-626	3901-626
10X8	3701-628	3901-628
12	3701-120	3901-120
12X2	3701-661	3901-661
12X3	3701-663	3901-663
12X4	3701-664	3901-664
12X6	3701-666	3901-666
12X8	3701-668	3901-668
12X10	3701-670	3901-670
14	3701-140	3901-140
14X2	3701-691	3901-691
14X3	3701-693	3901-693
14X4	3701-694	3901-694
14X6	3701-696	3901-696
14X8	3701-698	3901-698
14X10	3701-700	3901-700
14X12	3701-702	3901-702
16	3701-160	3901-160
16X2	3701-751	3901-751
16X3	3701-753	3901-753
16X4	3701-754	3901-754
16X6	3701-756	3901-756
16X8	3701-758	3901-758
16X10	3701-760	3901-760
16X12	3701-762	3901-762
16X14	3701-764	3901-764
18	3701-180	3901-180
18X4	3701-784	3901-784
18X6	3701-786	3901-786
18X8	3701-788	3901-788
18X10	3701-790	3901-790
18X12	3701-792	3901-792
18X14	3701-794	3901-794
18X16	3701-796	3901-796



Size	SCH 40 DWV	SCH 80 DWV
	Prod Code: 390 Part Number	Prod Code: 400 Part Number

**TEE (Socket x Socket x Socket) (continued)**

20	3701-200	3901-200
20X4	3701-814	3901-814
20X6	3701-816	3901-816
20X8	3701-818	3901-818
20X10	3701-820	3901-820
20X12	3701-822	3901-822
20X14	3701-824	3901-824
20X16	3701-826	3901-826
20X18	3701-828	3901-828
24	3701-240	3901-240
24X4	3701-904	3901-904
24X6	3701-906	3901-906
24X8	3701-908	3901-908
24X10	3701-910	3901-910
24X12	3701-912	3901-912
24X14	3701-914	3901-914
24X16	3701-916	3901-916
24X18	3701-918	3901-918
24X20	3701-920	3901-920



**Test Tee (Soc X FPT With Plug)**

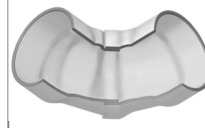
2		3901-020TEST*
3		3901-030TEST*
4		3901-040TEST*
6	3701-060TEST**	3901-060TEST***
8	3701-080TEST**	3901-080TEST***
10	3701-100TEST**	3901-100TEST***
12	3701-120TEST**	3901-120TEST***
14	3701-140TEST**	3901-140TEST***

\* Molded Tee with molded MPT plug  
 \*\* Fabricated Tee with molded FPT adapter and MPT plug  
 \*\*\* Fabricated Tee with custom threaded adapter and HDPE plug

**90° Ells**

**90° ELBOW (Socket x Socket)**

1-1/2		3906-015
2		3906-020
2-1/2		3906-025
3		3906-030
4		3906-040
6	3706-060	3906-060
8	3706-080	3906-080
10	3706-100	3906-100
12	3706-120	3906-120
14	3706-140	3906-140
16	3706-160	3906-160
18	3706-180	3906-180
20	3706-200	3906-200
24	3706-240	3906-240



**Suitable for Oil-Free air handling to 25 psi, not for distribution of compressed air or gas**

JJ DOWNS INDUSTRIAL PLASTICS INC.

416.236.1884
Toronto, ON
JJDOWNS.COM



**Drain, Waste & Vent (DWV) Product**  
**PVC Schedule 40 & 80 DWV Fabricated Fittings**

**90° Ells**

Size	SCH 40 DWV	SCH 80 DWV
	Prod Code: 390 Part Number	Prod Code: 400 Part Number

**90° Elbow-Long sweep (Socket x Socket)**

Size	SCH 40 DWV Prod Code: 390 Part Number	SCH 80 DWV Prod Code: 400 Part Number
2-1/2	3706-025LSF	
3	3706-030LSF	3906-030LSF
4	3706-040LSF	3906-040LSF
6	3706-060LSF	3906-060LSF
8	3706-080LSF	3906-080LSF
10	3706-100LSF	3906-100LSF

**90° STREET ELL (Spigot x Socket)**

Size	SCH 40 DWV Prod Code: 390 Part Number	SCH 80 DWV Prod Code: 400 Part Number
4	3709-040	3909-040
6	3709-060	3909-060
8	3709-080	3909-080
10	3709-100	3909-100
12	3709-120	3909-120
14	3709-140	3909-140
16	3709-160	3909-160
18	3709-180	3909-180
20	3709-200	3909-200
24	3709-240	3909-240

**Non 90° Ells**

**11-1/4° ELBOW (Socket x Socket)**

Size	SCH 40 DWV Prod Code: 390 Part Number	SCH 80 DWV Prod Code: 400 Part Number
4	3711-040	3911-040
6	3711-060	3911-060
8	3711-080	3911-080
10	3711-100	3911-100
12	3711-120	3911-120
14	3711-140	3911-140
16	3711-160	3911-160
18	3711-180	3911-180
20	3711-200	3911-200
24	3711-240	3911-240

**15° ELBOW (Socket x Socket)**

Size	SCH 40 DWV Prod Code: 390 Part Number	SCH 80 DWV Prod Code: 400 Part Number
4	3718-040	3918-040
6	3718-060	3918-060
8	3718-080	3918-080
10	3718-100	3918-100
12	3718-120	3918-120
14	3718-140	3918-140
16	3718-160	3918-160
18	3718-180	3918-180
20	3718-200	3918-200
24	3718-240	3918-240

**22-1/2° ELBOW (Socket x Socket)**

Size	SCH 40 DWV Prod Code: 390 Part Number	SCH 80 DWV Prod Code: 400 Part Number
4	3716-040	3916-040
6	3716-060	3916-060
8	3716-080	3916-080
10	3716-100	3916-100
12	3716-120	3916-120
14	3716-140	3916-140
16	3716-160	3916-160
18	3716-180	3916-180

Size	SCH 40 DWV	SCH 80 DWV
	Prod Code: 390 Part Number	Prod Code: 400 Part Number

**22-1/2° ELBOW (Socket x Socket) (continued)**

20	3716-200	3916-200
24	3716-240	3916-240

**22-1/2° STREET ELL (Spigot x Socket)**

6	3742-060	3942-060
8	3742-080	3942-080
10	3742-100	3942-100
12	3742-120	3942-120
14	3742-140	3942-140
16	3742-160	3942-160
18	3742-180	3942-180
20	3742-200	3942-200
24	3742-240	3942-240

**30° ELBOW (Socket x Socket)**

4	3715-040	3915-040
6	3715-060	3915-060
8	3715-080	3915-080
10	3715-100	3915-100
12	3715-120	3915-120
14	3715-140	3915-140
16	3715-160	3915-160
18	3715-180	3915-180
20	3715-200	3915-200
24	3715-240	3915-240

**45° ELBOW (Socket x Socket)**

4	3717-040	3917-040
6	3717-060	3917-060
8	3717-080	3917-080
10	3717-100	3917-100
12	3717-120	3917-120
14	3717-140	3917-140
16	3717-160	3917-160
18	3717-180	3917-180
20	3717-200	3917-200
24	3717-240	3917-240

**45° STREET ELL (Spigot x Socket)**

4	3727-040	3927-040
6	3727-060	3927-060
8	3727-080	3927-080
10	3727-100	3927-100
12	3727-120	3927-120
14	3727-140	3927-140
16	3727-160	3927-160
18	3727-180	3927-180
20	3727-200	3927-200
24	3727-240	3927-240

Suitable for Oil-Free air handling to 25 psi, not for distribution of compressed air or gas

 JJ DOWNS INDUSTRIAL PLASTICS INC.	 <small>international association of plastics distribution</small>	
416.236.1884	Toronto, ON	JJDOWN.COM



**Drain, Waste & Vent (DWV) Product**  
**PVC Schedule 40 & 80 DWV Fabricated Fittings**

**Non 90° Ells**

Size	SCH 40 DWV	SCH 80 DWV
	Prod Code: 390 Part Number	Prod Code: 400 Part Number
<b>60° ELBOW (Socket x Socket)</b>		
4	3724-040	3924-040
6	3724-060	3924-060
8	3724-080	3924-080
10	3724-100	3924-100
12	3724-120	3924-120
14	3724-140	3924-140
16	3724-160	3924-160
18	3724-180	3924-180
20	3724-200	3924-200
24	3724-240	3924-240

**Couplings**

Size	SCH 40 DWV	SCH 80 DWV
<b>COUPLING (Socket x Socket)</b>		
8	3729-080	3929-080
10	3729-100	3929-100
12	3729-120	3929-120
14	3729-140	3929-140
16	3729-160	3929-160
18	3729-180	3929-180
20	3729-200	3929-200
24	3729-240	3929-240

**REPAIR COUPLING (Gasket x Gasket)**

Size	SCH 40 DWV	SCH 80 DWV
<b>REPAIR COUPLING (Gasket x Gasket)</b>		
4	3728-040	3928-040
6	3728-060	3928-060
8	3728-080	3928-080
10	3728-100	3928-100
12	3728-120	3928-120
14	3728-140	3928-140
16	3728-160	3928-160
18	3728-180	3928-180
20	3728-200	3928-200
24	3728-240	3928-240

**Reducer Couplings**

Size	SCH 40 DWV	SCH 80 DWV
<b>REDUCER COUPLING (Socket x Socket)</b>		
6X2	3729-528	3929-528
6X3	3729-530	3929-530
6X4	3729-532	3929-532
8X2	3729-578	3929-578
8X3	3729-580	3929-580
8X4	3729-582	3929-582
8X6	3729-585	3929-585
10X4	3729-624	3929-624
10X6	3729-626	3929-626
10X8	3729-628	3929-628
12X4	3729-664	3929-664
12X6	3729-666	3929-666
12X8	3729-668	3929-668
12X10	3729-670	3929-670
14X4	3729-694	3929-694

Size	SCH 40 DWV	SCH 80 DWV
	Prod Code: 390 Part Number	Prod Code: 400 Part Number

**REDUCER COUPLING (Socket x Socket) (continued)**

14X6	3729-696	3929-696
14X8	3729-698	3929-698
14X10	3729-700	3929-700
14X12	3729-702	3929-702
16X4	3729-754	3929-754
16X6	3729-756	3929-756
16X8	3729-758	3929-758
16X10	3729-760	3929-760
16X12	3729-762	3929-762
16X14	3729-764	3929-764
18X6	3729-786	3929-786
18X8	3729-788	3929-788
18X10	3729-790	3929-790
18X12	3729-792	3929-792
18X14	3729-794	3929-794
18X16	3729-796	3929-796
20X6	3729-816	3929-816
20X8	3729-818	3929-818
20X10	3729-820	3929-820
20X12	3729-822	3929-822
20X14	3729-824	3929-824
20X16	3729-826	3929-826
20X18	3729-828	3929-828
24X6	3729-906	3929-906
24X8	3729-908	3929-908
24X10	3729-910	3929-910
24X12	3729-912	3929-912
24X14	3729-914	3929-914
24X16	3729-916	3929-916
24X18	3729-918	3929-918
24X20	3729-920	3929-920

**ECCENTRIC REDUCER COUPLING (Socket x Socket)**

3X2	3729-338E	3929-338E
4X2	3729-420E <sup>2</sup>	3929-420E <sup>2</sup>
4X3	3729-422E	3929-422E
6X2	3729-528E <sup>2</sup>	3929-528E <sup>3</sup>
6X3	3729-530E <sup>2</sup>	3929-530E <sup>2</sup>
6X4	3729-532E <sup>1</sup>	3929-532E
8X3	3729-580E <sup>3</sup>	3929-580E <sup>3</sup>
8X4	3729-582E <sup>2</sup>	3929-582E <sup>2</sup>
8X6	3729-585E	3929-585E
10X4	3729-624E <sup>2</sup>	3929-624E <sup>3</sup>
10X6	3729-626E	3929-626E <sup>2</sup>
10X8	3729-628E	3929-628E
12X4	3729-664E <sup>3</sup>	3929-664E <sup>4</sup>
12X6	3729-666E <sup>2</sup>	3929-666E <sup>3</sup>
12X8	3729-668E <sup>2</sup>	3929-668E <sup>2</sup>
12X10	3729-670E	3929-670E
14X6	3729-696E <sup>2</sup>	3929-696E <sup>3</sup>
14X8	3729-698E <sup>2</sup>	3929-698E <sup>2</sup>
14X10	3729-700E <sup>1</sup>	3929-700E <sup>1</sup>
14X12	3729-702E	3929-702E
16X6	3729-756E <sup>4</sup>	3929-756E <sup>4</sup>


**Suitable for Oil-Free air handling to 25 psi, not for distribution of compressed air or gas**

JJD	 <small>international association of plastics distribution</small>	
JJ DOWNS INDUSTRIAL PLASTICS INC.		
416.236.1884	Toronto, ON	JJDOWNS.COM



**Drain, Waste & Vent (DWV) Product**  
**PVC Schedule 40 & 80 DWV Fabricated Fittings**

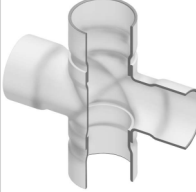
**Reducer Couplings**

Size	SCH 40 DWV	SCH 80 DWV	
	Prod Code: 390 Part Number	Prod Code: 400 Part Number	
<b>ECCENTRIC REDUCER COUPLING (Socket x Socket) (continued)</b>			
	<b>16X8</b>	3729-758E <sup>3</sup>	3929-758E <sup>3</sup>
	<b>16X10</b>	3729-760E <sup>3</sup>	3929-760E <sup>2</sup>
	<b>16X12</b>	3729-762E	3929-762E <sup>2</sup>
	<b>16X14</b>	3729-764E	3929-764E
	<b>18X6</b>	3729-786E <sup>5</sup>	3929-786E <sup>5</sup>
	<b>18X8</b>	3729-788E <sup>4</sup>	3929-788E <sup>4</sup>
	<b>18X10</b>	3729-790E <sup>3</sup>	3929-790E <sup>3</sup>
	<b>18X12</b>	3729-792E <sup>2</sup>	3929-792E <sup>3</sup>
	<b>18X14</b>	3729-794E <sup>2</sup>	3929-794E <sup>2</sup>
	<b>18X16</b>	3729-796E	3929-796E

2=Two-Step Design, 3=Three-Step Design, 4=Four-Step Design, 5=Five-Step Design, 6=Six-Step Design

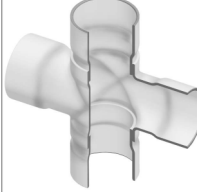
**Crosses**

**CROSS (Socket x Socket x Socket x Socket)**

	<b>4X2</b>		3920-420
	<b>4X3</b>		3920-422
	<b>6</b>	3720-060	3920-060
	<b>6X2</b>	3720-528	3920-528
	<b>6X3</b>	3720-530	3920-530
	<b>6X4</b>	3720-532	3920-532
	<b>8</b>	3720-080	3920-080
	<b>8X2</b>	3720-578	3920-578
	<b>8X3</b>	3720-580	3920-580
	<b>8X4</b>	3720-582	3920-582
	<b>8X6</b>	3720-585	3920-585
	<b>10</b>	3720-100	3920-100
	<b>10X2</b>	3720-621	3920-621
	<b>10X3</b>	3720-623	3920-623
	<b>10X4</b>	3720-624	3920-624
	<b>10X6</b>	3720-626	3920-626
	<b>10X8</b>	3720-628	3920-628
	<b>12</b>	3720-120	3920-120
	<b>12X2</b>	3720-661	3920-661
	<b>12X3</b>	3720-663	3920-663
	<b>12X4</b>	3720-664	3920-664
	<b>12X6</b>	3720-666	3920-666
	<b>12X8</b>	3720-668	3920-668
	<b>12X10</b>	3720-670	3920-670
	<b>14</b>	3720-140	3920-140
	<b>14X2</b>	3720-691	3920-691
	<b>14X3</b>	3720-693	3920-693
	<b>14X4</b>	3720-694	3920-694
	<b>14X6</b>	3720-696	3920-696
	<b>14X8</b>	3720-698	3920-698
	<b>14X10</b>	3720-700	3920-700
	<b>14X12</b>	3720-702	3920-702
	<b>16</b>	3720-160	3920-160
	<b>16X2</b>	3720-751	3920-751
	<b>16X3</b>	3720-753	3920-753
	<b>16X4</b>	3720-754	3920-754

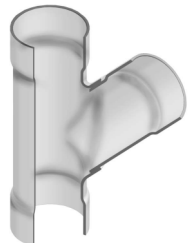
Size	SCH 40 DWV	SCH 80 DWV
	Prod Code: 390 Part Number	Prod Code: 400 Part Number

**CROSS (Socket x Socket x Socket x Socket) (continued)**

	<b>16X6</b>	3720-756	3920-756
	<b>16X8</b>	3720-758	3920-758
	<b>16X10</b>	3720-760	3920-760
	<b>16X12</b>	3720-762	3920-762
	<b>16X14</b>	3720-764	3920-764
	<b>18</b>	3720-180	3920-180
	<b>18X4</b>	3720-784	3920-784
	<b>18X6</b>	3720-786	3920-786
	<b>18X8</b>	3720-788	3920-788
	<b>18X10</b>	3720-790	3920-790
	<b>18X12</b>	3720-792	3920-792
	<b>18X14</b>	3720-794	3920-794
	<b>18X16</b>	3720-796	3920-796
	<b>20</b>	3720-200	3920-200
	<b>20X4</b>	3720-814	3920-814
	<b>20X6</b>	3720-816	3920-816
	<b>20X8</b>	3720-818	3920-818
	<b>20X10</b>	3720-820	3920-820
	<b>20X12</b>	3720-822	3920-822
	<b>20X14</b>	3720-824	3920-824
	<b>20X16</b>	3720-826	3920-826
	<b>20X18</b>	3720-828	3920-828
	<b>24</b>	3720-240	3920-240
	<b>24X4</b>	3720-904	3920-904
	<b>24X6</b>	3720-906	3920-906
	<b>24X8</b>	3720-908	3920-908
	<b>24X10</b>	3720-910	3920-910
	<b>24X12</b>	3720-912	3920-912
	<b>24X14</b>	3720-914	3920-914
	<b>24X16</b>	3720-916	3920-916
	<b>24X18</b>	3720-918	3920-918
	<b>24X20</b>	3720-920	3920-920

**Wyes**

**WYE (Socket x Socket x Socket)**

	<b>2</b>		3975-020
	<b>3</b>		3975-030
	<b>4</b>		3975-040
	<b>6</b>		3975-060
	<b>8</b>	3775-080	3975-080
	<b>8X2</b>	3775-578	3975-578
	<b>8X3</b>	3775-580	3975-580
	<b>8X4</b>	3775-582	3975-582
	<b>8X6</b>	3775-585	3975-585
	<b>10</b>	3775-100	3975-100
	<b>10X2</b>	3775-621	3975-621
	<b>10X3</b>	3775-623	3975-623
	<b>10X4</b>	3775-624	3975-624
	<b>10X6</b>	3775-626	3975-626
	<b>10X8</b>	3775-628	3975-628
	<b>12</b>	3775-120	3975-120
	<b>12X2</b>	3775-661	3975-661
	<b>12X3</b>	3775-663	3975-663

Suitable for Oil-Free air handling to 25 psi, not for distribution of compressed air or gas

JJD	member iapd
JJ DOWNS INDUSTRIAL PLASTICS INC.	international association of plastics distributors
416.236.1884	Toronto, ON JJDOWNS.COM



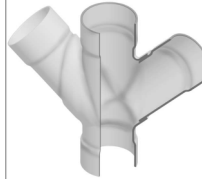
**Drain, Waste & Vent (DWV) Product**  
**PVC Schedule 40 & 80 DWV Fabricated Fittings**

**Wyes**

Size	SCH 40 DWV	SCH 80 DWV
	Prod Code: 390 Part Number	Prod Code: 400 Part Number
<b>WYE (Socket x Socket x Socket) (continued)</b>		
12X4	3775-664	3975-664
12X6	3775-666	3975-666
12X8	3775-668	3975-668
12X10	3775-670	3975-670
14	3775-140	3975-140
14X2	3775-691	3975-691
14X3	3775-693	3975-693
14X4	3775-694	3975-694
14X6	3775-696	3975-696
14X8	3775-698	3975-698
14X10	3775-700	3975-700
14X12	3775-702	3975-702
16	3775-160	3975-160
16X2	3775-751	3975-751
16X3	3775-753	3975-753
16X4	3775-754	3975-754
16X6	3775-756	3975-756
16X8	3775-758	3975-758
16X10	3775-760	3975-760
16X12	3775-762	3975-762
16X14	3775-764	3975-764
18	3775-180	3975-180
18X4	3775-784	3975-784
18X6	3775-786	3975-786
18X8	3775-788	3975-788
18X10	3775-790	3975-790
18X12	3775-792	3975-792
18X14	3775-794	3975-794
18X16	3775-796	3975-796
20	3775-200	3975-200
20X4	3775-814	3975-814
20X6	3775-816	3975-816
20X8	3775-818	3975-818
20X10	3775-820	3975-820
20X12	3775-822	3975-822
20X14	3775-824	3975-824
20X16	3775-826	3975-826
20X18	3775-828	3975-828
24	3775-240	3975-240
24X4	3775-904	3975-904
24X6	3775-906	3975-906
24X8	3775-908	3975-908
24X10	3775-910	3975-910
24X12	3775-912	3975-912
24X14	3775-914	3975-914
24X16	3775-916	3975-916
24X18	3775-918	3975-918
24X20	3775-920	3975-920



Size	SCH 40 DWV	SCH 80 DWV
	Prod Code: 390 Part Number	Prod Code: 400 Part Number
<b>DOUBLE WYE (Socket x Socket x Socket)</b>		
6	3776-060	3976-060
6X4	3776-532	3976-532
8	3776-080	3976-080
8X2	3776-578	3976-578
8X3	3776-580	3976-580
8X4	3776-582	3976-582
8X6	3776-585	3976-585
10	3776-100	3976-100
10X2	3776-621	3976-621
10X3	3776-623	3976-623
10X4	3776-624	3976-624
10X6	3776-626	3976-626
10X8	3776-628	3976-628
12	3776-120	3976-120
12X2	3776-661	3976-661
12X3	3776-663	3976-663
12X4	3776-664	3976-664
12X6	3776-666	3976-666
12X8	3776-668	3976-668
12X10	3776-670	3976-670
14	3776-140	3976-140
14X2	3776-691	3976-691
14X3	3776-693	3976-693
14X4	3776-694	3976-694
14X6	3776-696	3976-696
14X8	3776-698	3976-698
14X10	3776-700	3976-700
14X12	3776-702	3976-702
16	3776-160	3976-160
16X2	3776-751	3976-751
16X3	3776-753	3976-753
16X4	3776-754	3976-754
16X6	3776-756	3976-756
16X8	3776-758	3976-758
16X10	3776-760	3976-760
16X12	3776-762	3976-762
16X14	3776-764	3976-764
18	3776-180	3976-180
18X4	3776-784	3976-784
18X6	3776-786	3976-786
18X8	3776-788	3976-788
18X10	3776-790	3976-790
18X12	3776-792	3976-792
18X14	3776-794	3976-794
18X16	3776-796	3976-796
20	3776-200	3976-200
20X4	3776-814	3976-814
20X6	3776-816	3976-816
20X8	3776-818	3976-818
20X10	3776-820	3976-820
20X12	3776-822	3976-822
20X14	3776-824	3976-824
20X16	3776-826	3976-826



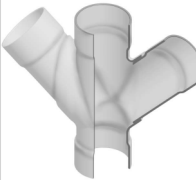
Suitable for Oil-Free air handling to 25 psi, not for distribution of compressed air or gas

JJD	member iapd
international association of plastics distribution	
JJ DOWNS INDUSTRIAL PLASTICS INC.	
416.236.1884	Toronto, ON JJDOWNS.COM



**Drain, Waste & Vent (DWV) Product**  
**PVC Schedule 40 & 80 DWV Fabricated Fittings**

**Wyes**

Size	SCH 40 DWV		SCH 80 DWV	
	Prod Code: 390		Prod Code: 400	
	Part Number	Part Number	Part Number	Part Number
<b>DOUBLE WYE (Socket x Socket x Socket x Socket) (continued)</b>				
	20X18	3776-828	3976-828	
	24	3776-240	3976-240	
	24X4	3776-904	3976-904	
	24X6	3776-906	3976-906	
	24X8	3776-908	3976-908	
	24X10	3776-910	3976-910	
	24X12	3776-912	3976-912	
	24X14	3776-914	3976-914	
	24X16	3776-916	3976-916	
	24X18	3776-918	3976-918	
	24X20	3776-920	3976-920	

**COMBO WYE (Socket x Socket x Socket)**

6	3777-060	3977-060
6X4	3777-532	3977-532
8	3777-080	3977-080
8X2	3777-578	3977-578
8X3	3777-580	3977-580
8X4	3777-582	3977-582
8X6	3777-585	3977-585
10	3777-100	3977-100
10X2	3777-621	3977-621
10X3	3777-623	3977-623
10X4	3777-624	3977-624
10X6	3777-626	3977-626
10X8	3777-628	3977-628
12	3777-120	3977-120
12X2	3777-661	3977-661
12X3	3777-663	3977-663
12X4	3777-664	3977-664
12X6	3777-666	3977-666
12X8	3777-668	3977-668
12X10	3777-670	3977-670
14	3777-140	3977-140
14X2	3777-691	3977-691
14X3	3777-693	3977-693
14X4	3777-694	3977-694
14X6	3777-696	3977-696
14X8	3777-698	3977-698
14X10	3777-700	3977-700
14X12	3777-702	3977-702
16	3777-160	3977-160
16X2	3777-751	3977-751
16X3	3777-753	3977-753
16X4	3777-754	3977-754
16X6	3777-756	3977-756
16X8	3777-758	3977-758
16X10	3777-760	3977-760
16X12	3777-762	3977-762
16X14	3777-764	3977-764
18	3777-180	3977-180
18X4	3777-784	3977-784

Size	SCH 40 DWV		SCH 80 DWV	
	Prod Code: 390		Prod Code: 400	
	Part Number	Part Number	Part Number	Part Number
<b>COMBO WYE (Socket x Socket x Socket) (continued)</b>				
18X6	3777-786	3977-786		
18X8	3777-788	3977-788		
18X10	3777-790	3977-790		
18X12	3777-792	3977-792		
18X14	3777-794	3977-794		
18X16	3777-796	3977-796		
20	3777-200	3977-200		
20X4	3777-814	3977-814		
20X6	3777-816	3977-816		
20X8	3777-818	3977-818		
20X10	3777-820	3977-820		
20X12	3777-822	3977-822		
20X14	3777-824	3977-824		
20X16	3777-826	3977-826		
20X18	3777-828	3977-828		
24	3777-240	3977-240		
24X4	3777-904	3977-904		
24X6	3777-906	3977-906		
24X8	3777-908	3977-908		
24X10	3777-910	3977-910		
24X12	3777-912	3977-912		
24X14	3777-914	3977-914		
24X16	3777-916	3977-916		
24X18	3777-918	3977-918		
24X20	3777-920	3977-920		

**Double Combo Wye (Soc X Soc X Soc X Soc)**

6	3792-060	
6X2	3792-528	
6X3	3792-530	
6X4	3792-532	
8	3792-080	
8X2	3792-578	
8X3	3792-580	
8X4	3792-582	
8X6	3792-585	
10	3792-100	
10X2	3792-621	
10X3	3792-623	
10X4	3792-624	
10X6	3792-626	
10X8	3792-628	
12	3792-120	
12X2	3792-661	
12X3	3792-663	
12X4	3792-664	
12X6	3792-666	
12X8	3792-668	
12X10	3792-670	
14	3792-140	
14X2	3792-691	
14X3	3792-693	
14X4	3792-694	
14X6	3792-696	

Suitable for Oil-Free air handling to 25 psi, not for distribution of compressed air or gas

JJD	member iapd
JJ DOWNS INDUSTRIAL PLASTICS INC.	
416.236.1884	Toronto, ON JJDOWNS.COM



Drain, Waste & Vent (DWV) Product  
**PVC Schedule 40 & 80 DWV Fabricated Fittings**

**Wyes**

	Size	SCH 40 DWV	SCH 80 DWV
		Prod Code: 390	Prod Code: 400
		Part Number	Part Number

**Double Combo Wye (Soc X Soc X Soc X Soc) (continued)**

	<b>14X8</b>	3792-698	
	<b>14X10</b>	3792-700	
	<b>14X12</b>	3792-702	

**Suitable for Oil-Free air handling to 25 psi, not for distribution of compressed air or gas**

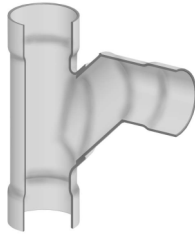
	
JJ DOWNS INDUSTRIAL PLASTICS INC.	international association of plastics distribution
416.236.1884	Toronto, ON JJDOWNS.COM



**Drain, Waste & Vent (DWV) Product**  
**PVC Schedule 40 & 80 DWV Fabricated Fittings**

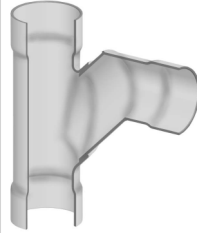
**Sanitary Tees**

Size	SCH 40 DWV	SCH 80 DWV
	Prod Code: 390	Prod Code: 400
	Part Number	Part Number
<b>SANITARY TEE (Socket x Socket x Socket)</b>		
2		3990-020
3		3990-030
4		3990-040
6	3790-060	3990-060
6X4	3790-532	3990-532
8	3790-080	3990-080
8X2	3790-578	3990-578
8X3	3790-580	3990-580
8X4	3790-582	3990-582
8X6	3790-585	3990-585
10	3790-100	3990-100
10X2	3790-621	3990-621
10X3	3790-623	3990-623
10X4	3790-624	3990-624
10X6	3790-626	3990-626
10X8	3790-628	3990-628
12	3790-120	3990-120
12X2	3790-661	3990-661
12X3	3790-663	3990-663
12X4	3790-664	3990-664
12X6	3790-666	3990-666
12X8	3790-668	3990-668
12X10	3790-670	3990-670
14	3790-140	3990-140
14X2	3790-691	3990-691
14X3	3790-693	3990-693
14X4	3790-694	3990-694
14X6	3790-696	3990-696
14X8	3790-698	3990-698
14X10	3790-700	3990-700
14X12	3790-702	3990-702
16	3790-160	3990-160
16X2	3790-751	3990-751
16X3	3790-753	3990-753
16X4	3790-754	3990-754
16X6	3790-756	3990-756
16X8	3790-758	3990-758
16X10	3790-760	3990-760
16X12	3790-762	3990-762
16X14	3790-764	3990-764
18	3790-180	3990-180
18X4	3790-784	3990-784
18X6	3790-786	3990-786
18X8	3790-788	3990-788
18X10	3790-790	3990-790
18X12	3790-792	3990-792
18X14	3790-794	3990-794
18X16	3790-796	3990-796
20	3790-200	3990-200
20X4	3790-814	3990-814
20X6	3790-816	3990-816



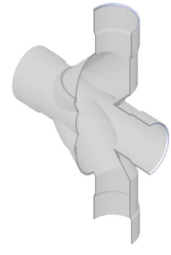
Size	SCH 40 DWV	SCH 80 DWV
	Prod Code: 390	Prod Code: 400
	Part Number	Part Number

<b>SANITARY TEE (Socket x Socket x Socket) (continued)</b>		
20X8	3790-818	3990-818
20X10	3790-820	3990-820
20X12	3790-822	3990-822
20X14	3790-824	3990-824
20X16	3790-826	3990-826
20X18	3790-828	3990-828
24	3790-240	3990-240
24X4	3790-904	3990-904
24X6	3790-906	3990-906
24X8	3790-908	3990-908
24X10	3790-910	3990-910
24X12	3790-912	3990-912
24X14	3790-914	3990-914
24X16	3790-916	3990-916
24X18	3790-918	3990-918
24X20	3790-920	3990-920



**Double Sanitary Tee**

<b>Double Sanitary Tee (Socket x Socket X Socket X Socket)</b>		
6	3791-060	
6X2	3791-528	
6X3	3791-530	
6X4	3791-532	
8	3791-080	
8X2	3791-578	
8X3	3791-580	
8X4	3791-582	
8X6	3791-585	
10	3791-100	
10X2	3791-621	
10X3	3791-623	
10X4	3791-624	
10X6	3791-626	
10X8	3791-628	
12	3791-120	
12X2	3791-661	
12X3	3791-663	
12X4	3791-664	
12X6	3791-666	
12X8	3791-668	
14	3791-140	
14X2	3791-691	
14X3	3791-693	
14X4	3791-694	
14X6	3791-696	
14X8	3791-698	
14X10	3791-700	
14X12	3791-702	



**Suitable for Oil-Free air handling to 25 psi, not for distribution of compressed air or gas**

JJD	member iapd
JJ DOWNS INDUSTRIAL PLASTICS INC.	
416.236.1884	Toronto, ON JJDOWN.COM





**Drain, Waste & Vent (DWV) Product**  
**PVC Schedule 40 & 80 DWV Fabricated Fittings**

**Adapters**

	Size	SCH 40 DWV	SCH 80 DWV
		Prod Code: 399	Prod Code: 400
		Part Number	Part Number

**IPS x SEWER ADAPTER (Socket x Spigot)**

	4	3729-04013IXS	
	6	3729-06013IXS	
	8	3729-08013IXS	
	10	3729-10013IXS	
	12	3729-12013IXS	

**IPS x SEWER ADAPTER (Socket x Socket)**

	4	3729-040IXS	
	6	3729-060IXS	
	8	3729-080IXS	
	10	3729-100IXS	
	12	3729-120IXS	

**IPS x SEWER ADAPTER (Spigot x Socket)**

	4	3729-04031IXS	
	6	3729-06031IXS	
	8	3729-08031IXS	
	10	3729-10031IXS	
	12	3729-12031IXS	

**Caps**

	Size	SCH 40 DWV	SCH 80 DWV
		Prod Code: 390	Prod Code: 400
		Part Number	Part Number

**CAP (Socket)**

	4	3747-040	3947-040
	6	3747-060	3947-060
	8	3747-080	3947-080
	10	3747-100	3947-100
	12	3747-120	3947-120
	14	3747-140	3947-140
	16	3747-160	3947-160
	18	3747-180	3947-180
	20	3747-200	3947-200
	24	3747-240	3947-240

**Plugs**

**SPIGOT PLUG (Spigot)**

	6	3749-060	3949-060
	8	3749-080	3949-080
	10	3749-100	3949-100
	12	3749-120	3949-120
	14	3749-140	3949-140
	16	3749-160	3949-160

**Cleanouts**

	Size	SCH 40 DWV	SCH 80 DWV
		Prod Code: 390	Prod Code: 400
		Part Number	Part Number

**Cleanout Adapter W/Plug (Spigot x Cleanout)**

SOLD AS SET ONLY (Non-Pressure Rated)

	2		3978-020
	3		3978-030
	4		3978-040
	5		3978-050
	6		3978-060
	8		3978-080
	10		3978-100
	12		3978-120
	14		3978-140
	16		3978-160
	18		3978-180
	20		3978-200
24		3978-240	

Fabricated PVC Gray With Custom Taper Thread and HPDE Plug

**Glue-On Saddles**

**Saddle (IPS O.D.x Socket)**

Non-Pressure Rated

	5X4	3763-490	
	6X2	3763-528	3963-528
	6X3	3763-530	3963-530
	6X4	3763-532	3963-532
	8X2	3763-578	3963-578
	8X3	3763-580	3963-580
	8X4	3763-582	3963-582
	8X6	3763-585	3963-585
	10X2	3763-621	3963-621
	10X3	3763-623	3963-623
	10X4	3763-624	3963-624
	10X6	3763-626	3963-626
	10X8	3763-628	3963-628
	12X2	3763-661	3963-661
	12X3	3763-663	3963-663
	12X4	3763-664	3963-664
	12X6	3763-666	3963-666
	12X8	3763-668	3963-668
	12X10	3763-670	3963-670
	14X2	3763-691	3963-691
	14X3	3763-693	3963-693
	14X4	3763-694	3963-694
	14X6	3763-696	3963-696
	14X8	3763-698	3963-698
	14X10	3763-700	3963-700
	14X12	3763-702	3963-702
	16X2	3763-751	3963-751
	16X3	3763-753	3963-753
	16X4	3763-754	3963-754
	16X6	3763-756	3963-756
16X8	3763-758	3963-758	
16X10	3763-760	3963-760	

Suitable for Oil-Free air handling to 25 psi, not for distribution of compressed air or gas

JJD	 <small>member international association of plastics distribution</small>	
JJ DOWNS INDUSTRIAL PLASTICS INC.		
416.236.1884	Toronto, ON	JJDOWNS.COM




**Drain, Waste & Vent (DWV) Product**  
**PVC Schedule 40 & 80 DWV Fabricated Fittings**

**Glue-On Saddles**


Size	SCH 40 DWV	SCH 80 DWV
	Prod Code: 390	Prod Code: 400
	Part Number	Part Number

**Saddle (IPS O.D.x Socket) (continued)**

	<b>16X12</b>	3763-762	3963-762
	<b>16X14</b>	3763-764	3963-764
	<b>18X2</b>	3763-781	3963-781
	<b>18X3</b>	3763-783	3963-783
	<b>18X4</b>	3763-784	3963-784
	<b>18X6</b>	3763-786	3963-786
	<b>18X8</b>	3763-788	3963-788
	<b>18X10</b>	3763-790	3963-790
	<b>18X12</b>	3763-792	3963-792
	<b>18X14</b>	3763-794	3963-794
	<b>18X16</b>	3763-796	3963-796
	<b>20X2</b>	3763-811	3963-811
	<b>20X3</b>	3763-813	3963-813
	<b>20X4</b>	3763-814	3963-814
	<b>20X6</b>	3763-816	3963-816
	<b>20X8</b>	3763-818	3963-818
	<b>20X10</b>	3763-820	3963-820
	<b>20X12</b>	3763-822	3963-822
	<b>20X14</b>	3763-824	3963-824
	<b>20X16</b>	3763-826	3963-826
	<b>20X18</b>	3763-828	3963-828
	<b>24X2</b>	3763-901	3963-901
	<b>24X3</b>	3763-903	3963-903
	<b>24X4</b>	3763-904	3963-904
	<b>24X6</b>	3763-906	3963-906
	<b>24X8</b>	3763-908	3963-908
	<b>24X10</b>	3763-910	3963-910
	<b>24X12</b>	3763-912	3963-912
	<b>24X14</b>	3763-914	3963-914
	<b>24X16</b>	3763-916	3963-916
	<b>24X18</b>	3763-918	3963-918
	<b>24X20</b>	3763-920	3963-920


**Stub Saddle (IPS O.D x Socket)**

Non-Pressure Rated

	<b>6X2</b>	3765-528	3965-528
	<b>6X3</b>	3765-530	3965-530
	<b>6X4</b>	3765-532	3965-532
	<b>8X2</b>	3765-578	3965-578
	<b>8X3</b>	3765-580	3965-580
	<b>8X4</b>	3765-582	3965-582
	<b>8X6</b>	3765-585	3965-585
	<b>10X2</b>	3765-621	3965-621
	<b>10X3</b>	3765-623	3965-623
	<b>10X4</b>	3765-624	3965-624
	<b>10X6</b>	3765-626	3965-626
	<b>10X8</b>	3765-628	3965-628
	<b>12X2</b>	3765-661	3965-661
	<b>12X3</b>	3765-663	3965-663
	<b>12X4</b>	3765-664	3965-664
	<b>12X6</b>	3765-666	3965-666
	<b>12X8</b>	3765-668	3965-668


Size	SCH 40 DWV	SCH 80 DWV
	Prod Code: 390	Prod Code: 400
	Part Number	Part Number

**Stub Saddle (IPS O.D x Socket) (continued)**

	<b>12X10</b>	3765-670	3965-670
	<b>14X2</b>	3765-691	3965-691
	<b>14X3</b>	3765-693	3965-693
	<b>14X4</b>	3765-694	3965-694
	<b>14X6</b>	3765-696	3965-696
	<b>14X8</b>	3765-698	
	<b>14X10</b>	3765-700	3965-700
	<b>14X12</b>	3765-702	3965-702
	<b>16X2</b>	3765-751	3965-751
	<b>16X3</b>	3765-753	3965-753
	<b>16X4</b>	3765-754	3965-754
	<b>16X6</b>	3765-756	3965-756
	<b>16X8</b>	3765-758	3965-758
	<b>16X10</b>	3765-760	3965-760
	<b>16X12</b>	3765-762	3965-762
	<b>16X14</b>	3765-764	3965-764
	<b>18X2</b>	3765-781	3965-781
	<b>18X3</b>	3765-783	3965-783
	<b>18X4</b>	3765-784	3965-784
	<b>18X6</b>	3765-786	3965-786
	<b>18X8</b>	3765-788	3965-788
	<b>18X10</b>	3765-790	3965-790
	<b>18X12</b>	3765-792	3965-792
	<b>18X14</b>	3765-794	3965-794
	<b>18X16</b>	3765-796	3965-796
	<b>20X2</b>	3765-811	3965-811
	<b>20X3</b>	3765-813	3965-813
	<b>20X4</b>	3765-814	3965-814
	<b>20X6</b>	3765-816	3965-816
	<b>20X8</b>	3765-818	3965-818
	<b>20X10</b>	3765-820	3965-820
	<b>20X12</b>	3765-822	3965-822
	<b>20X14</b>	3765-824	3965-824
	<b>20X16</b>	3765-826	3965-826
	<b>20X18</b>	3765-828	3965-828
	<b>24X2</b>	3765-901	3965-901
	<b>24X3</b>	3765-903	3965-903
	<b>24X4</b>	3765-904	3965-904
	<b>24X6</b>	3765-906	3965-906
	<b>24X8</b>	3765-908	3965-908
	<b>24X10</b>	3765-910	3965-910
	<b>24X12</b>	3765-912	3965-912
	<b>24X14</b>	3765-914	3965-914
	<b>24X16</b>	3765-916	3965-916
	<b>24X18</b>	3765-918	3965-918
	<b>24X20</b>	3765-920	3965-920

**Saddle Wye (IPS O.D. X Socket)**

Non-Pressure Rated

	<b>4X2</b>	3765-420X45	3965-420X45
	<b>4X3</b>	3765-422X45	3965-422X45
	<b>6X2</b>	3765-528X45	3965-528X45
	<b>6X3</b>	3765-530X45	3965-530X45
	<b>6X4</b>	3765-532X45	3965-532X45

**Suitable for Oil-Free air handling to 25 psi, not for distribution of compressed air or gas**

JJD	member
	iapd
	international association of plastics distribution
JJ DOWNS INDUSTRIAL PLASTICS INC.	
416.236.1884	Toronto, ON JJDOWN.COM



**Drain, Waste & Vent (DWV) Product**  
**PVC Schedule 40 & 80 DWV Fabricated**  
**Fittings & P-Traps**

**Glue-On Saddles**

Size	SCH 40 DWV	SCH 80 DWV
	Prod Code: 390	Prod Code: 400
	Part Number	Part Number

**Saddle Wye (IPS O.D. X Socket) (continued)**

Size	SCH 40 DWV Prod Code: 390 Part Number	SCH 80 DWV Prod Code: 400 Part Number
8X2	3765-578X45	3965-578X45
8X3	3765-580X45	3965-580X45
8X4	3765-582X45	3965-582X45
8X6	3765-585X45	3965-585X45
10X2	3765-621X45	3965-621X45
10X3	3765-623X45	3965-623X45
10X4		3965-624X45
10X6	3765-626X45	3965-626X45
10X8	3765-628X45	3965-628X45
12X2	3765-661X45	3965-661X45
12X3	3765-663X45	3965-663X45
12X4	3765-664X45	3965-664X45
12X6	3765-666X45	3965-666X45
12X8	3765-668X45	3965-668X45
12X10	3765-670X45	3965-670X45
14X2	3765-691X45	3965-691X45
14X3	3765-693X45	3965-693X45
14X4	3765-694X45	3965-694X45
14X6	3765-696X45	3965-696X45
14X8	3765-698X45	3965-698X45
14X10	3765-700X45	3965-700X45
14X12	3765-702X45	3965-702X45
16X2	3765-751X45	3965-751X45
16X3	3765-753X45	3965-753X45
16X4	3765-754X45	3965-754X45
16X6	3765-756X45	3965-756X45
16X8	3765-758X45	3965-758X45
16X10	3765-760X45	3965-760X45
16X12	3765-762X45	3965-762X45
16X14	3765-764X45	3965-764X45
18X2	3765-781X45	3965-781X45
18X3	3765-783X45	3965-783X45
18X4	3765-784X45	3965-784X45
18X6	3765-786X45	3965-786X45
18X8	3765-788X45	3965-788X45
18X10	3765-790X45	3965-790X45
18X12	3765-792X45	3965-792X45
18X14	3765-794X45	3965-794X45
18X16	3765-796X45	3965-796X45
20X2	3765-811X45	3965-811X45
20X3	3765-813X45	3965-813X45
20X4	3765-814X45	3965-814X45
20X6	3765-816X45	3965-816X45
20X8	3765-818X45	3965-818X45
20X10	3765-820X45	3965-820X45
20X12	3765-822X45	3965-822X45
20X14	3765-824X45	3965-824X45
20X16	3765-826X45	3965-826X45
20X18	3765-828X45	3965-828X45
24X2	3765-901X45	3965-901X45
24X3	3765-903X45	3965-903X45

Size	SCH 40 DWV	SCH 80 DWV
	Prod Code: 390	Prod Code: 400
	Part Number	Part Number

**Saddle Wye (IPS O.D. X Socket) (continued)**

Size	SCH 40 DWV Prod Code: 390 Part Number	SCH 80 DWV Prod Code: 400 Part Number
24X4	3765-904X45	3965-904X45
24X6	3765-906X45	3965-906X45
24X8	3765-908X45	3965-908X45
24X10	3765-910X45	3965-910X45
24X12	3765-912X45	3965-912X45
24X14	3765-914X45	3965-914X45
24X16	3765-916X45	3965-916X45
24X18	3765-918X45	3965-918X45
24X20	3765-920X45	3965-920X45

**P-Traps**

Part Number	Size	Std Pk	Mstr Ctn	Prod Code
-------------	------	--------	----------	-----------

**P-Trap**

**Socket**



3906-012PT	1-1/4	1	6	400
3906-015PT	1-1/2	1	6	409
3906-020PT	2	1	4	409
3906-025PT	2-1/2	6	0	400
3906-030PT	3	1	4	409
3906-040PT	4	1	4	409
3906-060PT	6	1	2	409
3906-080PT	8	1	0	409
3906-100PT	10	1	0	409
3906-120PT	12	1	0	409

**Suitable for Oil-Free air handling to 25 psi, not for distribution of compressed air or gas**

JJ DOWNS INDUSTRIAL PLASTICS INC.	international association of plastics distribution
416.236.1884	Toronto, ON JJDOWN.COM