



**Drain, Waste & Vent (DWV) Product**  
**PVC DWV Drain Waste & Vent Pipe and Fittings & PVC DWV Drain Waste & Vent Fittings**

**PVC DWV Drain Waste & Vent Pipe**

Part Number	Size	Std Pk	Pklt Qty	Prod Code
-------------	------	--------	----------	-----------

**Schedule 40 Pipe**  
**20" Lengths, Price Per Foot**



Price Per Foot

Part Number	Size	Std Pk	Pklt Qty	Prod Code
PD-400-012	1-1/4	20	3300	947
PD-400-015	1-1/2	20	3020	947
PD-400-020	2	20	2460	947
PD-400-030	3	20	1160	947
PD-400-040	4	20	1000	947
PD-400-060	6	20	340	947
PD-400-080	8	20	280	947
PD-400-100	10	20	220	947
PD-400-120	12	20	160	947
PD-400-140	14	20	60	944
PD-400-160	16	20	60	944

**PVC DWV Drain Waste & Vent Fittings STANDARDS & SPECIFICATIONS**

Standards provide greater assurance of product performance and consistency, and are available to assist design engineers in system specification. The most frequently referenced industry standards for plastic piping systems are ASTM Standard Specifications and Practices. Along with ASTM Standards, additional product specifications and certifications form the basis of product conformance to which Spears® products are manufactured.

**ASTM D 2665** Poly (Vinyl Chloride) (PVC) Plastic Drain, Waste, and Vent Pipe and Fittings.

**ASTM D 3311** Drain, Waste, and Vent (DWV) Plastic Fittings Patterns.

**ASTM F 1866** Poly (Vinyl Chloride) (PVC) Plastic Schedule 40 Drainage and DWV Fittings.Fabricated Fittings.

**ASTM D 1784** Rigid Poly (Vinyl Chloride) (PVC) Compounds and Chlorinated Poly Fittings.(Vinyl Chloride) (CPVC) Compounds.



NSF® International Standard 14 (NSF®-dvw) Certified  
 NSF® International Certified to Uniform Plumbing Code (NSF®-U.P. Code). See official listing

**P100 Coupling**

**H x H**



Part Number	Size	Std Pk	Pklt Qty	Prod Code
P100-015	1-1/2	100	7200	051
P100-020	2	100	3600	051
P100-030	3	60	840	051
P100-040	4	25	450	051
P100-060	6	5	175	051
P100-080	8	8	64	051
P100-100	10	1	36	052
P100-120	12	1	21	052
P100-140	14	1	12	052

Part Number	Size	Std Pk	Pklt Qty	Prod Code
-------------	------	--------	----------	-----------

**P101 Female Adapter**



**FPT x H**

Part Number	Size	Std Pk	Pklt Qty	Prod Code
P101-015	1-1/2	100	4800	051
P101-020	2	100	3500	051
P101-030	3	35	1260	051
P101-040	4	10	480	051
P101-060	6	10	180	051

**P102 Pipe Increaser - Reducer**



**H x H**

Part Number	Size	Std Pk	Pklt Qty	Prod Code
P102-251	2X1-1/2	25	4200	051
P102-337	3X1-1/2	25	1200	051
P102-338	3X2	20	960	051
P102-420	4X2	10	720	051
P102-422	4X3	20	720	051
P102-530	6X3	6	180	051
P102-532	6X4	4	144	051
P102-582	8X4	2	96	051
P102-585	8X6	2	96	051
P102-624	10X4	2	60	052
P102-626	10X6	1	36	052
P102-628	10X8	1	36	052
P102-666	12X6	1	21	052
P102-668	12X8	1	21	052

**Pipe Increaser - Eccentric Reducer**



**H x H**

Part Number	Size	Std Pk	Pklt Qty	Prod Code
P102-338E	3X2	20	600	051

**P103 Trap Adapter - Male**



**S x SLIP**

Part Number	Size	Std Pk	Pklt Qty	Prod Code
P103-015	1-1/2	50	5250	051
P103-020	2	25	4200	051

**P103P Trap Adapter - Male**



**S x SLIP w/Plastic Nut - Built-in Washer**

Part Number	Size	Std Pk	Pklt Qty	Prod Code
P103P-212	1-1/2X1-1/4	75	5400	051
P103P-015	1-1/2	50	5250	051
P103P-020	2	25	4200	051

**Suitable for Oil-Free air handling to 25 psi, not for distribution of compressed air or gas**

**JJ DOWNS INDUSTRIAL PLASTICS INC.**

416.236.1884      Toronto, ON      JJDOWNS.COM



**Drain, Waste & Vent (DWV) Product**  
**PVC DWV Drain Waste & Vent Fittings**

**PVC DWV Drain Waste & Vent Fittings**

Part Number	Size	Std Pk	Pklt Qty	Prod Code
-------------	------	--------	----------	-----------

**P103R Trap Adapter - Male with 1-1/2 Plastic Nut & Washer and 1-1/2 x1-1/4 Washer**

**S x SLIP w/Plastic Nut**

P103R-015	1-1/2	50	3600	051
-----------	-------	----	------	-----



**P103X Trap Adapter-Male**

**S x SLIP w/Chrome Nut & Washer**

P103X-212	1-1/2X1-1/4	100	7200	051
P103X-015	1-1/2	50	5250	051
P103X-020	2	25	4200	051



**P104 Trap Adapter - Female**

**H x SLIP**

P104-012	1-1/4	50	8400	051
P104-015	1-1/2	50	8400	051
P104-020	2	50	3600	051



**P104P Trap Adapter - Female**

**H x SLIP w/Plastic Nut**

P104P-212	1-1/2X1-1/4	50	5250	051
P104P-012	1-1/4	50	5250	051
P104P-015	1-1/2	50	5250	051



**P104R Trap Adapter - Female w/1-1/2 Plastic Nut & Washer and 1-1/2x1-1/4 Washer**

**H x SLIP w/Plastic Nut**

P104R-015	1-1/2	50	3600	051
-----------	-------	----	------	-----



**P104X Trap Adapter - Female**

**H x SLIP w/Chrome Nut & Washer**

P104X-212	1-1/2X1-1/4	50	3600	051
P104X-015	1-1/2	50	3600	051
P104X-020	2	50	3600	051



**P000P HDPE Slip Joint Nut**

**(Plastic Nut)**

P000P-015	1-1/2	100	18000	051
-----------	-------	-----	-------	-----



Part Number	Size	Std Pk	Pklt Qty	Prod Code
-------------	------	--------	----------	-----------

**P000P HDPE Slip Joint Nut (continued)**  
**(Plastic Nut)**

P000P-020	2	450	13500	051
P000P-169	1-1/4X1-1/2	350	16800	051

**P105 Fitting Cleanout Adapter**

**S x FPT**

P105-015	1-1/2	50	5250	051
P105-020	2	50	3600	051
P105-030	3	25	1200	051
P105-040	4	10	720	051
P105-060	6	10	180	051
P105-080	8	8	112	051



**P105H Female Cleanout Adapter**

**H x FPT**

P105H-040	4	10	720	051
P105H-060	6	10	180	051
P105H-080	8	8	112	051



**P105X Fitting Cleanout Adapter w/C.O. Plug**

**S x FPT**

P105X-015	1-1/2	50	5250	051
P105X-020	2	50	3600	051
P105X-030	3	25	900	051
P105X-040	4	10	480	051
P105X-060	6	10	180	051
P105X-080	8	8	112	051



\* Fabricated PVC Gray With Custom Taper Thread and HDPE Plug

**P106 Cleanout Plug**

**MPT**

P106-015	1-1/2	50	12000	051
P106-020	2	50	8400	051
P106-025	2-1/2	50	5250	051
P106-030	3	25	2625	051
P106-040	4	30	2160	051
P106-060	6	10	1050	051
P106-080	8	12	576	051



**P107 Flush Bushing**

**S x H**

P107-251	2X1-1/2	50	8400	051
P107-337	3X1-1/2	30	2520	051
P107-338	3X2	30	2520	051



Suitable for Oil-Free air handling to 25 psi, not for distribution of compressed air or gas

JJ DOWNS INDUSTRIAL PLASTICS INC.

416.236.1884
Toronto, ON
JJDOWNS.COM



Drain, Waste & Vent (DWV) Product  
**PVC DWV Drain Waste & Vent Fittings**

**PVC DWV Drain Waste & Vent Fittings**

Part Number	Size	Std Pk	Pklt Qty	Prod Code
<b>P107 Flush Bushing (continued)</b>				
<b>S x H</b>				
P107-420	4X2	30	1080	051
P107-422	4X3	25	1200	051
P107-532	6X4	10	300	051
P107-582	8X4	3	144	051
P107-585	8X6	4	120	051
P107-623 <sup>1</sup>	10X3	4	56	051
P107-624 <sup>1</sup>	10X4	2	60	052
P107-626	10X6	3	90	052
P107-628	10X8	3	90	052
P107-664 <sup>1</sup>	12X4	2	42	052
P107-666 <sup>1</sup>	12X6	2	42	052
P107-668 <sup>1</sup>	12X8	2	60	052
P107-670	12X10	2	60	052

<sup>1</sup>Outlet-sized with Bushing

**P108 Flush Bushing (Cleanout Adapter)**

**S x FPT**

Part Number	Size	Std Pk	Pklt Qty	Prod Code
P108-212	1-1/2X1-1/4	50	12000	051
P108-628	10X8	4	56	052
P108-668	12X8	1	30	052

**P108X Flush Bushing (Cleanout Adapter) w/Plug**

**S x FPT**

Part Number	Size	Std Pk	Pklt Qty	Prod Code
P108X-628	10X8	1	56	052
P108X-668	12X8	1	30	052

**P109 Male Adapter (Will not accept tail piece)**

**MPT x H**

Part Number	Size	Std Pk	Pklt Qty	Prod Code
P109-015	1-1/2	50	5250	051
P109-020	2	50	3600	051
P109-030	3	25	1200	051
P109-040	4	25	900	051
P109-060	6	7	245	051

**P110 Flush C.O. Plug**

**MPT**

Part Number	Size	Std Pk	Pklt Qty	Prod Code
P110-015	1-1/2	50	19200	051
P110-020	2	25	9600	051
P110-025	2-1/2	50	5250	051
P110-030	3	50	5250	051
P110-040	4	25	2400	051
P110-060	6	10	960	051

Part Number	Size	Std Pk	Pklt Qty	Prod Code
-------------	------	--------	----------	-----------

**P116 Cap**

**SOC**

P116-015	1-1/2	20	7680	051
P116-020	2	15	5760	051
P116-030	3	10	1680	051
P116-040	4	5	840	051
P116-060	6	5	240	051
P116-080	8	3	90	051

Note: 8" Cap is Domed Style

**P117 Transition Coupling (S&D Hub by DWV Hub)**

**H x H**

P117-040	4	20	700	051
P117-422	4X3	20	600	051

**P118 Adapter Bushing (Adapts DWV Hub to S&D Spigot)**

**DWV SPIGOT x S&D HUB**

P118-030	3	25	1800	051
P118-040	4	10	1050	051
P118-060F	6	5	240	390

**P119 No-Hub Adapter**

**S x H**

P119-015	1-1/2	25	4200	051
P119-020	2	25	2625	051
P119-030	3	20	960	051
P119-040	4	15	720	051
P119-251	2X1-1/2	35	3675	051
P119-422	4X3	10	720	051

**P122 Spigot Adapter, Cast Iron**

**H x H**

P122-040	4	15	210	051
----------	---	----	-----	-----

**P123 Hub Adapter, Cast Iron**

**H x S**

P123-020	2	20	1440	051
P123-030	3	25	750	051
P123-040	4	10	350	051

Suitable for Oil-Free air handling to 25 psi, not for distribution of compressed air or gas

JJ DOWNS INDUSTRIAL PLASTICS INC.

416.236.1884
Toronto, ON
JJDOWNS.COM



Drain, Waste & Vent (DWV) Product  
**PVC DWV Drain Waste & Vent Fittings**

**PVC DWV Drain Waste & Vent Fittings**

Part Number	Size	Std Pk	Pklt Qty	Prod Code
-------------	------	--------	----------	-----------

**P123R Hub Adapter, Cast Iron, Increaser**

**H x S**

Plain End: Joint can be made with compression gasket or plastic lead & seal rope - Do Not use hot lead

P123R-213	1-1/2X2	10	1680	051
P123R-342	3X4	10	350	051



**P130 Repair Coupling**

**H x H**

P130-015	1-1/2	25	6000	051
P130-020	2	25	2625	051
P130-030	3	10	960	051
P130-040	4	5	480	051
P130-060	6	5	175	051
P130-080	8	8	64	051
P130-100	10	1	36	052



**P131 Test Cap**

P131-015	1-1/2	100	38400	051
P131-020	2	100	24000	051
P131-030	3	50	8400	051
P131-040	4	100	4800	051



**P300 1/4 Bend**

**H x H**

P300-015	1-1/2	100	3000	051
P300-020	2	50	1500	051
P300-030	3	25	350	051
P300-040	4	10	180	051
P300-060	6	4	56	051
P300-080	8	2	28	051
P300-100	10	1	12	052
P300-120	12	1	5	052
P300-251	2X1-1/2	10	1050	051



**P300S 1/4 Bend with Side Inlet**

**ALL HUB**

P300S-338	3X3X2	10	360	051
-----------	-------	----	-----	-----



Part Number	Size	Std Pk	Pklt Qty	Prod Code
-------------	------	--------	----------	-----------

**P302 1/4 Bend, Street**

**S x H**

P302-015	1-1/2	100	3000	051
P302-020	2	50	1500	051
P302-030	3	20	360	051
P302-040	4	10	180	051
P302-060	6	4	56	051
P302-080	8	2	28	051
P302-100	10	1	12	052
P302-120	12	1	5	052



**P303 1/4 Bend w/Low Heel Inlet**

**H x H x H**

P303-338	3X3X2	25	200	051
P303-420	4X4X2	6	180	051



**P304 Long Sweep 1/4 Bend**

**H x H**

P304-015	1-1/2	50	1750	051
P304-020	2	25	875	051
P304-030	3	10	360	051
P304-040	4	5	150	051
P304-060	6	5	35	051



6" size assembled from 2-Molded 1/8 Bends

**P306 1/4 Bend w/Low Heel Inlet**

**S x H x H**

P306-420	4X4X2	5	150	051
----------	-------	---	-----	-----



**P309 Long Sweep 1/4 Bend, Street**

**H x S**

P309-015	1-1/2	50	1750	051
P309-020	2	25	900	051
P309-030	3	20	280	051
P309-040	4	5	150	051
P309-060	6	5	35	051



**P310 1/4 Bend, Street w/Low Heel Inlet**

**H x S x H**

P310-338	3X3X2	15	270	051
----------	-------	----	-----	-----



Suitable for Oil-Free air handling to 25 psi, not for distribution of compressed air or gas

JJ DOWNS INDUSTRIAL PLASTICS INC.

416.236.1884
Toronto, ON
JJDOWNS.COM



Drain, Waste & Vent (DWV) Product  
**PVC DWV Drain Waste & Vent Fittings**

**PVC DWV Drain Waste & Vent Fittings**

Part Number	Size	Std Pk	Pklt Qty	Prod Code
-------------	------	--------	----------	-----------

**P319 1/6 Bend**

**H x H**



P319-015	1-1/2	40	2880	051
P319-020	2	25	1200	051
P319-030	3	20	600	051
P319-040	4	10	180	051

**P320 1/6 Bend, Street**

**H x S**



P320-015	1-1/2	40	2880	051
P320-020	2	25	1800	051
P320-030	3	20	600	051
P320-040	4	10	300	051

**P321 1/8 Bend**

**H x H**



P321-015	1-1/2	100	3000	051
P321-020	2	50	1500	051
P321-030	3	25	450	051
P321-040	4	15	270	051
P321-060	6	5	90	051
P321-080	8	1	36	051
P321-100	10	1	21	052
P321-120	12	1	12	052

**P323 1/8 Bend, Street**

**H x S**



P323-015	1-1/2	100	3600	051
P323-020	2	50	1800	051
P323-030	3	25	450	051
P323-040	4	10	300	051
P323-060	6	5	90	051
P323-080	8	1	36	051
P323-100	10	1	18	052
P323-120	12	1	10	052

**P324 1/16 Bend**

**H x H**



P324-015	1-1/2	50	3600	051
P324-020	2	25	1800	051
P324-030	3	20	720	051

Part Number	Size	Std Pk	Pklt Qty	Prod Code
-------------	------	--------	----------	-----------

**P324 1/16 Bend (continued)**

**H x H**

P324-040	4	15	270	051
P324-060	6	3	105	051
P324-080	8	2	36	051

**P326 1/16 Bend, Street**

**H x S**



P326-015	1-1/2	50	3600	051
P326-020	2	25	1800	051
P326-030	3	20	720	051
P326-040	4	10	350	051
P326-060	6	5	90	051
P326-080	8	2	36	051

**P327 Double 1/4 Bend**

**H x H x H**



P327-015	1-1/2	20	1440	051
P327-020	2	25	875	051
P327-030	3	15	270	051
P327-040	4	6	108	051

**P327 Double 1/4 Bend, Reducing**

**H x H x H**



P327-241	2X1-1/2X1-1/2	25	1200	051
----------	---------------	----	------	-----

**P329 Closet Bend, Reducing**

**H x H**



P329-342	3X4	10	300	051
----------	-----	----	-----	-----

**P330 Closet Bend, Reducing**

**H x S**



P330-342	3X4	10	300	051
----------	-----	----	-----	-----

**P330X Closet Bend, Reducing with TEST CAP**

**H x S**



P330X-342	3X4	10	300	051
-----------	-----	----	-----	-----

Suitable for Oil-Free air handling to 25 psi, not for distribution of compressed air or gas

JJ DOWNS INDUSTRIAL PLASTICS INC.

416.236.1884
Toronto, ON
JJDOWNS.COM



**Drain, Waste & Vent (DWV) Product**  
**PVC DWV Drain Waste & Vent Fittings**

**PVC DWV Drain Waste & Vent Fittings**

Part Number	Size	Std Pk	Pklt Qty	Prod Code
-------------	------	--------	----------	-----------

**P331 Vent Ell**

**H x H**



P331-015	1-1/2	25	1800	051
P331-020	2	30	1440	051
P331-030	3	25	450	051
P331-040	4	10	180	051
P331-060	6	5	40	051
P331-080	8	2	28	051
P331-100	10	1	16	052
P331-120	12	1	12	052

**P333 Vent Ell, Street**

**H x S**



P333-015	1-1/2	25	3150	051
P333-020	2	20	1440	051
P333-030	3	25	450	051
P333-040	4	10	300	051

**P400 Sanitary Tee**

**ALL HUB**



P400-015	1-1/2	60	1800	051
P400-020	2	30	900	051
P400-030	3	30	240	051
P400-040	4	5	150	051
P400-060	6	6	42	051
P400-080	8	2	16	051
P400-100	10	1	7	052
P400-120	12	1	5	052

**P401 Sanitary Tee, Reducing**

**ALL HUB**



P401-241	2X1-1/2X1-1/2	25	875	051
P401-251	2X2X1-1/2	50	900	051
P401-257	2X1-1/2X2	25	875	051
P401-337	3X3X1-1/2	10	350	051
P401-338	3X3X2	10	350	051
P401-419 <sup>1</sup>	4X1-1/2	10	300	051
P401-420	4X4X2	10	300	051
P401-422	4X4X3	10	180	051
P401-532	6X4	4	72	051
P401-582 <sup>1</sup>	8X4	2	16	051

<sup>1</sup> Sized with bushing

Part Number	Size	Std Pk	Pklt Qty	Prod Code
-------------	------	--------	----------	-----------

**P403 Sanitary Tee, Street**

**S x H x H**



P403-015	1-1/2	20	1440	051
P403-020	2	25	750	051
P403-030	3	30	210	051
P403-040	4	10	140	051
P403-060	6	4	32	051
P403-080	8	2	16	051
P403-100	10	1	10	052
P403-120	12	1	8	052

**P404 Sanitary Tee, Street, Reducing**

**S x H x H**



P404-241	2X1-1/2X1-1/2	50	1500	051
P404-251	2X2X1-1/2	50	900	051
P404-257	2X1-1/2X2	50	900	051
P404-337	3X3X1-1/2	10	480	051
P404-338	3X3X2	10	350	051
P404-420	4X4X2	5	240	051
P404-422	4X4X3	5	150	051

**P416 Sanitary Tee with Left Side Inlet**

**ALL HUB**



P416-337	3X3X3X1-1/2	10	180	051
P416-338	3X3X3X2	10	180	051
P416-420	4X4X4X2	4	120	051

**P417 Sanitary Tee with Right Side Inlet**

**ALL HUB**



P417-337	3X3X3X1-1/2	10	180	051
P417-338	3X3X3X2	10	180	051
P417-420	4X4X4X2	10	80	051

**P418 Sanitary Tee with R&L Side Inlets**

**ALL HUB**



P418-337	3X3X3X1-1/2	5	175	051
P418-338	3X3X3X2X2	5	150	051
P418-420	4X4X4X2X2	5	90	051

Suitable for Oil-Free air handling to 25 psi, not for distribution of compressed air or gas

JJ DOWNS INDUSTRIAL PLASTICS INC.

416.236.1884
Toronto, ON
JJDOWNS.COM



**Drain, Waste & Vent (DWV) Product**  
**PVC DWV Drain Waste & Vent Fittings**

**PVC DWV Drain Waste & Vent Fittings**

Part Number	Size	Std Pk	Pklt Qty	Prod Code
-------------	------	--------	----------	-----------

**P428 Double Sanitary Tee**

**ALL HUB**



P428-015	1-1/2	25	1200	051
P428-020	2	25	750	051
P428-030	3	8	240	051
P428-040	4	6	108	051

**P429 Double Sanitary Tee, Reducing**

**ALL HUB**



P429-251	2X2X1-1/2X1-1/2	25	900	051
P429-337	3X3X1-1/2X1-1/2	6	432	051
P429-338	3X3X2X2	10	300	051
P429-419	4X4X1-1/2X1-1/2	7	245	051
P429-420	4X4X2X2	7	245	051
P429-422	4X4X3X3	8	144	051

**P439 Double Sanitary Tee with R&L Side Inlets**

**ALL HUB**



P439-338	3X3X3X3X2X2	4	120	051
P439-420	4X4X4X4X2X2	4	72	051

**P441 Vent Tee**

**ALL HUB**



P441-015	1-1/2	25	1800	051
P441-020	2	25	900	051
P441-030	3	10	300	051
P441-040	4	5	175	051
P441-060	6	4	32	051
P441-080	8	2	28	051
P441-100	10	1	12	052
P441-120	12	1	10	052

**P442 Vent Tee, Reducing**

**ALL HUB**



P442-251	2X1-1/2	25	1200	051
P442-532	6X4	2	72	051
P442-582	8X4	2	36	051
P442-585	8X6	2	28	051
P442-624	10X4	1	12	052
P442-626	10X6	1	14	052
P442-628	10X8	1	12	052

Part Number	Size	Std Pk	Pklt Qty	Prod Code
-------------	------	--------	----------	-----------

**P442 Vent Tee, Reducing (continued)**

**ALL HUB**

P442-664	12X4	1	10	052
P442-666	12X6	1	10	052
P442-668	12X8	1	10	052
P442-670	12X10	1	10	052

**P444X Cleanout Tee w/C.O. Plug**

**H x H**



P444X-015	1-1/2	20	1440	051
P444X-020	2	10	1050	051
P444X-030	3	10	350	051
P444X-040	4	10	180	051
P444X-060	6	2	70	051
P444X-080	8	2	32	051

**P445 Flush C.O. Tee**

**H x H x FPT**



P445-015	1-1/2	20	2100	051
P445-020	2	25	1200	051
P445-030	3	10	350	051
P445-040	4	10	180	051
P445-060	6	3	54	051

**P445X Flush C.O. Tee w/C.O. Plug**

**H x H**



P445X-015	1-1/2	20	1440	051
P445X-020	2	10	1050	051
P445X-030	3	10	300	051
P445X-040	4	10	180	051
P445X-060	6	2	36	051

**P447 Horizontal Twin Tee**

**ALL HUB**



P447-337	3X3X1-1/2X1-1/2	5	360	051
----------	-----------------	---	-----	-----

**P448 2-WAY Cleanout**

**ALL HUB**



P448-030	3	12	216	051
P448-040	4	5	90	051

Suitable for Oil-Free air handling to 25 psi, not for distribution of compressed air or gas

JJ DOWNS INDUSTRIAL PLASTICS INC.

416.236.1884
Toronto, ON
JJDOWNS.COM



**Drain, Waste & Vent (DWV) Product**  
**PVC DWV Drain Waste & Vent Fittings**

**PVC DWV Drain Waste & Vent Fittings**

Part Number	Size	Std Pk	Pklt Qty	Prod Code
-------------	------	--------	----------	-----------

**P500 Double Fixture Fitting**

**ALL HUB**



P500-020	2X2X2X2	10	360	051
P500-030	3X3X3X3	10	80	051
P500-241	2X1-1/2X1-1/2X1-1/2	20	600	051
P500-251	2X2X1-1/2X1-1/2	20	600	051
P500-338	3X2X3X3	10	80	051

**P501 Combination Wye and 1/8 Bend (One Piece)**

**ALL HUB**



P501-015	1-1/2	50	900	051
P501-020	2	20	600	051
P501-030	3	10	180	051
P501-040	4	8	96	051

Notice: Fabricated Fittings (shaded lines) do not have "one-piece" construction)

**P502 Combination Wye and 1/8 Bend, Reducing (One Piece)**

**ALL HUB**



P502-251	2X2X1-1/2	20	700	051
P502-337	3X3X1-1/2	15	450	051
P502-338	3X3X2	10	300	051
P502-420	4X4X2	5	150	051
P502-422	4X4X3	5	90	051

Notice: Fabricated Fittings (shaded lines) do not have "one-piece" construction)

**P503 Combination Wye and 1/8 Bend (Two Piece)**

**ALL HUB**



P503-030	3	10	180	051
P503-040	4	5	40	051
P503-060	6	4	40	051
P503-080	8	1	8	051
P503-100	10	1	4	052
P503-120	12	1	4	052

**P504 Combination Wye and 1/8 Bend, Reducing (Two Piece)**

**ALL HUB**



P504-422	4X3	5	90	051
P504-530	6X3	5	40	051
P504-532	6X4	5	35	051
P504-580	8X3	2	16	051

Part Number	Size	Std Pk	Pklt Qty	Prod Code
-------------	------	--------	----------	-----------

**P504 Combination Wye and 1/8 Bend, Reducing (Two Piece)**

(continued)

**ALL HUB**

P504-582	8X4	2	16	051
P504-585	8X6	1	8	051
P504-623	10X3	1	12	052
P504-624	10X4	1	8	052
P504-626	10X6	1	8	052
P504-628	10X8	1	8	052
P504-664	12X4	1	4	052
P504-666	12X6	1	4	052
P504-668	12X8	1	6	052
P504-670	12X10	1	6	052

\* Bushed

**P507 Double Combination Wye and 1/8 Bend**

**ALL HUB**



P507-015	1-1/2	10	350	051
P507-020	2	10	300	051
P507-030	3	10	80	051
P507-040	4	5	35	051
P507-251	2X2X1-1/2X1-1/2	20	360	051
P507-338	3X3X2X2	10	140	051
P507-420	4X4X2X2	5	70	051
P507-422	4X4X3X3	5	40	051

**P515 Combination Wye and 1/8 Bend with Left Side Inlet**

**ALL HUB**



P515-338	3X3X3X2	10	140	051
----------	---------	----	-----	-----

**P516 Combination Wye and 1/8 Bend with Right Side Inlet**

**ALL HUB**



P516-338	3X3X3X2	10	140	051
----------	---------	----	-----	-----

**P517 Combination Wye and 1/8 Bend with R&L Side Inlets**

**ALL HUB**



P517-338	3X3X3X2	10	80	051
----------	---------	----	----	-----

**P600 Wye**

**ALL HUB**



P600-015	1-1/2	45	1350	051
P600-020	2	25	750	051
P600-030	3	8	240	051
P600-040	4	8	144	051
P600-060	6	4	48	051

**Suitable for Oil-Free air handling to 25 psi, not for distribution of compressed air or gas**

JJ DOWNS INDUSTRIAL PLASTICS INC.

416.236.1884
Toronto, ON
JJDOWNS.COM





Drain, Waste & Vent (DWV) Product  
**PVC DWV Drain Waste & Vent Fittings**

**PVC DWV Drain Waste & Vent Fittings**

Part Number	Size	Std Pk	Pllt Qty	Prod Code
<b>P600 Wye (continued)</b>				
<b>ALL HUB</b>				
P600-080	8	1	12	051
P600-100	10	1	6	052
P600-120	12	1	4	052



**P601 Wye, Reducing**

**ALL HUB**

P601-241	2X1-1/2X1-1/2	25	875	051
P601-251	2X2X1-1/2	25	900	051
P601-257	2X1-1/2X2	10	480	051
P601-337	3X3X1-1/2	15	450	051
P601-338	3X3X2	12	360	051
P601-419	4X4X1-1/2	10	300	051
P601-420	4X4X2	10	180	051
P601-422	4X4X3	10	140	051
P601-528 <sup>1</sup>	6X6X2	5	40	051
P601-530	6X6X3	6	48	051
P601-532	6X6X4	5	40	051
P601-578 <sup>1</sup>	8X8X2	3	24	051
P601-580 <sup>1</sup>	8X8X3	2	28	051
P601-582	8X8X4	2	28	051
P601-585	8X8X6	1	14	051
P601-624 <sup>1</sup>	10X10X4	1	12	052
P601-626	10X10X6	1	12	052
P601-628	10X10X8	1	10	052
P601-664 <sup>1</sup>	12X12X4	1	6	052
P601-666 <sup>1</sup>	12X12X6	1	6	052
P601-668 <sup>1</sup>	12X12X8	1	6	052
P601-670 <sup>1</sup>	12X12X10	1	6	052

<sup>1</sup> Sized with Bushing

**P602 Wye, Street**

**S x H x H**

P602-015	1-1/2	50	1500	051
P602-020	2	30	540	051
P602-030	3	10	180	051
P602-040	4	10	80	051



**P603 Wye, Street, Reducing**

**S x H x H**

P603-251	2X2X1-1/2	25	875	051
P603-420	4X4X2	10	180	051
P603-422	4X4X3	10	80	051



Part Number	Size	Std Pk	Pllt Qty	Prod Code
-------------	------	--------	----------	-----------

**P611 Double Wye**

**ALL HUB**

P611-015	1-1/2	40	720	051
P611-020	2	20	600	051
P611-030	3	15	120	051
P611-040	4	5	70	051
P611-060	6	2	16	051



**P611S Double Wye, with 2" Side Inlet**

**ALL HUB**

P611S-030	3	10	140	051
-----------	---	----	-----	-----



**P612 Double Wye, Reducing**

**ALL HUB**

P612-251	2X2X1-1/2X1-1/2	10	720	051
P612-337	3X3X1-1/2X1-1/2	10	300	051
P612-338	3X3X2X2	15	210	051
P612-420	4X4X2X2	5	150	051
P612-422	4X4X3X3	5	90	051
P612-532	6X6X4X4	5	35	051



**P335 Trap Elbow (for use with Traps only)**

**H x S**

P335-030	3	30	540	051
P335-040	4	25	200	051



**P700 Return Bend**

**H x H**

P700-015	1-1/2	20	1440	051
P700-020	2	35	630	051
P700-030	3	8	240	051
P700-040	4	6	108	051
P700-060	6	2	36	051
P700-080	8	1	7	051



**P704P Tail Piece Adapter**

**S x SLIP w/Plastic Nut - Built-in Washer**

P704P-015	1-1/2	25	4200	051
-----------	-------	----	------	-----



Suitable for Oil-Free air handling to 25 psi, not for distribution of compressed air or gas

JJ DOWNS INDUSTRIAL PLASTICS INC.

416.236.1884
Toronto, ON
JJDOWNS.COM



**Drain, Waste & Vent (DWV) Product**  
**PVC DWV Drain Waste & Vent Fittings**

**PVC DWV Drain Waste & Vent Fittings**

Part Number	Size	Std Pk	Pklt Qty	Prod Code
-------------	------	--------	----------	-----------

**P704X Tail Piece Adapter**

**S x SLIP w/Chrome Nut & Washer**



P704X-015	1-1/2	25	4200	051
-----------	-------	----	------	-----

**P706X P-Trap**

**H x H**



P706X-015	1-1/2	25	875	051
P706X-020	2	25	450	051
P706X-030	3	10	80	051
P706X-040	4	4	72	051
P706X-060	6	2	14	051
P706X-080	8	1	7	051
P706X-100	10	1	3	052
P706X-120	12	1	1	052

**P707X P-Trap w/Cleanout**

**H x H**



P707X-015	1-1/2	10	720	051
-----------	-------	----	-----	-----

**P708P Adjustable P-Trap w/Plastic Nut**

**H x H**



P708P-015	1-1/2	25	875	051
P708P-020	2	25	450	051

**P711P L.A. Pattern P-Trap w/Plastic Nut**

**SLIP x H w/Plastic Nut & Washer**



P711P-169	1-1/4x1-1/2	25	750	051
P711P-015	1-1/2	25	750	051

**P711X L.A. Pattern P-Trap w/Chrome Nut**

**SLIP x H w/Chrome Nut & Washer**



P711X-015	1-1/2	25	900	051
-----------	-------	----	-----	-----

**P800 Closet Flange**

**H**



P800-422	4X3	25	750	051
P800-040	4X4	30	540	051

Part Number	Size	Std Pk	Pklt Qty	Prod Code
-------------	------	--------	----------	-----------

**P800G Closet Flange w/Gussets**

**H**



P800G-040	4	30	540	051
-----------	---	----	-----	-----

**P800KO Closet Flange with Knockout**

**H**



P800KO-422	4X3	25	750	051
------------	-----	----	-----	-----

**P800S Closet Flange with Stop**

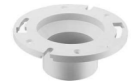
**H**



P800S-422	4X3	25	750	051
-----------	-----	----	-----	-----

**P801 Closet Flange, Reducing**

**SPIGOT**



P801-422	4X3	25	750	051
----------	-----	----	-----	-----

**P811 Closet Flange w/Adjustable Metal Ring**

**H**



P811-040	4	30	540	051
P811-422	4X3	30	540	051

**P811KO Closet Flange w/Adjustable Metal Ring and Knockout**

**H**



P811KO-422	4X3	25	350	051
------------	-----	----	-----	-----

**P812 Closet Flange w/Adjustable Metal Ring**

**SPIGOT**



P812-040	4	25	450	051
P812-422	4X3	25	450	051

**P813 Flush Closet Flange w/Adjustable Metal Ring**

**Fits Over 3" Pipe or Inside 4" Pipe**



P813-422	4X3	25	750	051
----------	-----	----	-----	-----

Suitable for Oil-Free air handling to 25 psi, not for distribution of compressed air or gas

JJ DOWNS INDUSTRIAL PLASTICS INC.

416.236.1884
Toronto, ON
JJDOWNS.COM



Drain, Waste & Vent (DWV) Product  
**PVC DWV Drain Waste & Vent Fittings**

**PVC DWV Drain Waste & Vent Fittings**

Part Number	Size	Std Pk	Pklt Qty	Prod Code
-------------	------	--------	----------	-----------

**P815 Flush Closet Flange**

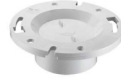
**Fits Over 3" Pipe or Inside 4" Pipe**



P815-040	4X4 / 4X3	25	750	051
----------	-----------	----	-----	-----

**P815KO Flush Closet Flange with Knockout**

**Fits Over 3" Pipe or Inside 4" Pipe**



P815KO-040	4X4 / 4X3	25	750	051
------------	-----------	----	-----	-----

**P820 Offset Closet Flange w/Adjustable Metal Ring**

**(1-1/2" Offset) H**



P820-422	4X3	15	450	051
----------	-----	----	-----	-----

Uniform Plumbing Code does not accept offset closet flanges

**Floor Drain with Stainless Steel Adjustable Top w/Round Grate**



P1500-015S	1-1/2X5	4	216	054
P1600-015S	1-1/2X6	4	216	054
P1700-015S	1-1/2X7	4	0	054
P1800-015S	1-1/2X8	4	216	054
P1500-020S	2X5	4	216	054
P1600-020S	2X6	4	400	054
P1700-020S	2X7	4	0	054
P1800-020S	2X8	4	0	054
P1500-030S	3X5	4	216	054
P1600-030S	3X6	4	400	054
P1700-030S	3X7	2	54	054
P1800-030S	3X8	4	216	054
P1500-040S	4X5	4	216	054
P1600-040S	4X6	4	1	054
P1700-040S	4X7	4	400	054
P1800-040S	4X8	4	144	054

**Floor Drain with Stainless Steel Adjustable Top w/Round Grate & Membrane Collar**



P150M-015S	1-1/2X5	4	216	054
P160M-015S	1-1/2X6	4	216	054
P170M-015S	1-1/2X7	4	0	054
P180M-015S	1-1/2X8	4	216	054
P150M-020S	2X5	1	175	054
P160M-020S	2X6	4	216	054
P170M-020S	2X7	4	0	054
P180M-020S	2X8	4	0	054

Part Number	Size	Std Pk	Pklt Qty	Prod Code
-------------	------	--------	----------	-----------

**Floor Drain with Stainless Steel Adjustable Top w/Round Grate & Membrane Collar (continued)**

P150M-030S	3X5	4	216	054
P160M-030S	3X6	4	216	054
P170M-030S	3X7	2	54	054
P180M-030S	3X8	2	144	054
P150M-040S	4X5	4	216	054
P160M-040S	4X6	4	216	054
P170M-040S	4X7	4	192	054
P180M-040S	4X8	4	0	054

**Floor Cleanout w/Stainless Steel Adjustable Round Top & Solid Access Cover**



P1510-015S	1-1/2X5	4	216	054
P1510-020S	2X5	6	210	054
P1510-030S	3X5	4	400	054
P1510-040S	4X5	4	400	054

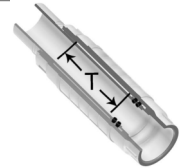
**Floor Cleanout w/Stainless Steel Adjustable Round Top, Solid Access Cover & Membrane Collar**



P151M-015S	1-1/2X5	4	216	054
P151M-020S	2X5	4	216	054
P151M-030S	3X5	4	216	054
P151M-040S	4X5	4	54	054

**S118 Expansion Joint**

**Spg x Soc - PVC White with EPDM O-ring**



S118-15	1-1/2	25	900	025
S118-20	2	12	576	025
S118-25	2-1/2	5	120	025
S118-30	3	4	96	025
S118-40	4	2	70	025
S118-60	6	1	24	025

**S119 Expansion Joint**

**Soc x Soc - PVC White with EPDM O-ring**



S119-15	1-1/2	16	768	025
S119-20	2	10	480	025
S119-25	2-1/2	5	120	025
S119-30	3	4	96	025
S119-40	4	2	70	025
S119-60	6	1	24	025

Suitable for Oil-Free air handling to 25 psi, not for distribution of compressed air or gas

JJ DOWNS INDUSTRIAL PLASTICS INC.

416.236.1884
Toronto, ON
JJDOWNS.COM



**Drain, Waste & Vent (DWV) Product**  
**PVC DWV Drain Waste & Vent Fittings**  
**& Sewer Disconnect**

**PVC DWV Drain Waste & Vent Fittings**

Part Number	Size	Std Pk	P/lt Qty	Prod Code
-------------	------	--------	----------	-----------

**826 Large Diameter Expansion Joint**

**Soc x Soc - PVC Gray with EPDM O-ring**

826-080X6	8	1	12	085
826-100X6	10	1	12	085
826-120X6	12	1	4	085
826-140X6	14	1	4	085



**Air Admittance valve With Diaphragm Seal**

**Spigot**

Maximum 6 DFU (Drainage Fixture Units)

AAV-015	1-1/2	12	2016	285
---------	-------	----	------	-----

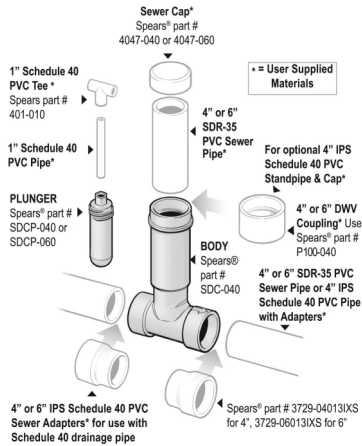


**Air Admittance Valve With Ball Seal**

**Spigot**

Maximum 6 DFU (Drainage Fixture Units)

AAV-015	1-1/2	12	2016	285
---------	-------	----	------	-----



**Sewer Disconnect**

**Sewer Disconnect Application**

Requires Purchase of SDC-040 Body and SDCP-040 Plunger, Sold Separately.



Screw-down Plunger installs in Body to provide temporary shut-off of Sewer line or to minimize sewage backup from sewer mains during flooding. Body accepts SDR-35 Sewer Pipe (or any ASTM D 3034 /D 2729 pipe), but can easily adapt to Schedule 40 drainage pipe using 4" IPS socket x Sewer spigot adapters, Spears® part no. 3729-04013IXS.

Standpipe to grade can be easily fabricated from user-supplied SDR-35 Sewer Pipe or optionally from Schedule 40 drainage pipe with the addition of a 4" Schedule 40 DWV socket Coupling, Spears® part no. P100-040. For Closure, a 4" Sewer Cap, Spears® part no. 4047-040; or 4" Schedule 40 DWV Cap, Spears® part no. P116-040 can be used as applicable.

A T-handle extension for easy Plunger operation can also be fabricated from user supplied 1" Schedule 40 pipe and a Tee fitting, Spears® part no. 401-010. See installation instructions included with product for additional detail.

**Sewer Disconnect Body**

Part Number	Size	Std Pk	P/lt Qty	Prod Code
-------------	------	--------	----------	-----------

**Sewer Socket X Sewer Socket.**

Requires Purchase of SDCP-040 or SDCP-060 Plunger

SDC-040	4	6	108	055
SDC-060	6	2	28	055

**Sewer Disconnect Plunger**

Part Number	Size	Std Pk	P/lt Qty	Prod Code
-------------	------	--------	----------	-----------

**For Use With Sewer Disconnect**

**Body Purchased Separately.**

Requires Purchase of SDC-040 or SDC-060 Body

SDCP-040	4	12	420	055
SDCP-060	6	6	180	055

**Optional IPS x SEWER Adapter**

**IPS Socket x Sewer Spigot for adapting Sewer Disconnect Body to Schedule 40 drainage pipe**



3729-04013IXS	4	1	360	399
3729-06013IXS	6	1	120	399

**Suitable for Oil-Free air handling to 25 psi, not for distribution of compressed air or gas**

JJ DOWNS INDUSTRIAL PLASTICS INC.

416.236.1884

Toronto, ON

JJ DOWNS.COM

international association  
of plastics distribution



**Drain, Waste & Vent (DWV) Product**  
**Utility Backwater Valve**

**Utility Backwater Valve**



Spears® Utility Backwater Valves feature an easily serviceable and replaceable Flapper Assembly with extendable access using standard piping components. Designed for direct solvent cement connection to ASTM D 2665 DWV drainage pipe or any other IPS size pipe. Spears® IPS x Sewer adapters easily convert valve to ASTM D 3034 SDR 35 Sewer Pipe. Utility Backwater Valves conform to the requirements of ASME/ANSI and are designed

to prevent backflow in numerous applications where easy service access for maintenance and cleaning is needed. Excellent for use in sanitary or storm sewer drainage systems to prevent waste back up due to inadequate drainage, for balancing multi-level ponds, aquaculture features or storage tank systems, and many other applications. Spears® Utility Backwater Valve has been engineered for easier installation with included Extension Kit Adapter components for use with User-Supplied Schedule 40 or Class 125 Extension Riser pipe cut to desired length. Utility Backwater Valve package comes with 50 psi (115 feet of head) rated Extension Adapters. Optional Adapter Kits available in 100 psi (232 feet of head) rating. Can also use User-supplied equivalent adapter components.

- Replaceable internal flapper assembly.
- Extension Kit Adapter components allow easy use with assembly user supplied pipe cut to desired length.
- Direct Valve Connection to ASTM D 2665 PVC DWV or other IPS size pipe. Spears® IPS DWV x Sewer & Drain Adapter are available for connection to ASTM D 3034 & ASTM D 2729 Sewer pipe.
- Utility Backwater Valve is Pressure Rated to 50psi (115 feet of head) or 100psi (232 feet of head) @ 73°F (23°C) with Appropriate Extension Adapter Selection.
- Conforms to ASME/ANSI A112.14.1 for Backwater Valves.

Part Number	Size	Std Pk	Plit Qty	Prod Code
-------------	------	--------	----------	-----------

**Utility Backwater Valve w/Extension Adapters**

**Valve Package includes Body, Flapper Assembly and Extension Adapters (female thread & male thread plug) with 50 psi Extension Adapters Rating 100 psi Extension Adapter Available.**



Requires User-Supplied 6" (for 4" valves) or 8" (for 6" valves) from Schedule 40 or Class 125 Riser Extension Pipe cut to desired length and 1" or 1-1/4" Internal Extension Pipe

SML-3	3	1	36	055
SML-4	4	1	36	055
SML-6	6	1	14	055

**Utility Backwater Valve Only**

**Includes Valve Body & Flapper Assembly Socket x Socket**

**Requires used of either 50 psi or 100 psi Extension Kit, or use of User-supplied equivalent components**



SML-3XP-A	3	1	54	055
SML-4XP-A	4	1	54	055
SML-6XP-A	6	1	21	055

Part Number	Size	Std Pk	Plit Qty	Prod Code
-------------	------	--------	----------	-----------

**Utility Backwater Valve Extension Adapter Kit**

**Select 50 psi or 100 psi Kit**

**Kit includes Female Threaded Cleanout Adapter and Male Threaded Plug for use with User-Supplied 6" (for 4" valves) or 8" (for 6" valves) from Schedule 40 or Class 125 Riser Extension Pipe**



Note: 50 psi Kits have DWV Cleanout Plugs, 100 psi kits have Schedule 40 Threaded Plugs. User-supplied equivalent components can also be used.

SML4XP-A-EK50	3" & 4" 50 psi	1	105	055
SML4XP-A-EK100	3" & 4" 100 psi	1	105	055
SML6XP-A-EK50	6" 50 psi	3	90	055
SML6XP-A-EK100	6" 100 psi	3	90	055

**Utility Backwater Valve Flapper Replacement Kit**

**Kit include Flapper Assembly For Repair or Replacement**



SML4XP-A-FRK	3" & 4"	1	720	055
SML6XP-A-FRK	6"	1	240	055

**IPSX Sewer Adapter**

**IPS DWV Spigot x Sewer Hub**



Adapts IPS DWV Valve Socket to Sewer Pipe

P118-030	3	25	1800	051
P118-040	4	10	1050	051
3729-06031IXS	6	1	120	399

**Industrial PVC Backwater Valves**

Backwater Valves are designed to prevent backflow in numerous applications where easy service access for maintenance and cleaning is needed. Excellent for use in sanitary or storm sewer drainage systems to prevent waste back up due to inadequate drainage, for balancing multi-level ponds, aquaculture features or storage tank systems, and many other applications. Spears® Backwater Valve has been engineered for improved function and easier service, especially in buried service with use of optional Service-Access Extension available either preassembled with valve or as an add-on kit.

- Replaceable internal flapper assembly with EPDM Seat.
- Service-Access Extension available either preassembled with valve, as an add-on kit, or as valve & extension kit components with user supplied pipe.
- Direct Connection to ASTM D 2665 PVC DWV or other IPS size pipe. Spears® fabricated IPS x Sewer Adapters or DWV x Sewer & Drain Adapter Bushings are available for connection to ASTM D 3034 & ASTM D 2729 Sewer pipe.
- Pressure Rated to 43 psi (100 feet of head) @ 73°F (23°C).
- All extension kits can be cut shorter for custom application.
- Conforms to ASME/ANSI A112.14.1 for Backwater Valves.

Continued ( See next page)

**Suitable for Oil-Free air handling to 25 psi, not for distribution of compressed air or gas**

JJ DOWNS INDUSTRIAL PLASTICS INC.

416.236.1884
Toronto, ON
JJDOWNS.COM



Drain, Waste & Vent (DWV) Product  
**Industrial PVC Backwater Valves**

**Industrial PVC Backwater Valves**

(Continued)

**PVC Backwater Valves**



**Backwater Valves - Valve Only**

Part Number	Size	Std Pk	Pllt Qty	Prod Code
-------------	------	--------	----------	-----------

**Socket x Socket**

S275P	2	1	3840	055
S375P	3	2	210	055
S475P	4	1	54	055
S675P	6	1	30	055

**PVC Backwater Valves with Extension Kit to Premade Length**



**Backwater Valves with Extension Kit to Premade Length**

Part Number	Size	Std Pk	Pllt Qty	Prod Code
-------------	------	--------	----------	-----------

**Socket x Socket**

Assembled with Extension

S275P-120 <sup>1</sup>	2X12HT	1	98	055
S275P-160 <sup>1</sup>	2X16HT	1	98	055
S275P-200 <sup>1</sup>	2X20HT	1	98	055
S275P-240 <sup>1</sup>	2X24HT	1	98	055
S275P-360 <sup>1</sup>	2X36HT	1	98	055
S275P-480 <sup>1</sup>	2X48HT	1	98	055
S375P-120 <sup>1</sup>	3X12HT	1	36	055
S375P-160 <sup>1</sup>	3X16HT	1	15	055
S375P-200 <sup>1</sup>	3X20HT	1	15	055
S375P-240 <sup>1</sup>	3X24HT	1	15	055
S375P-360 <sup>1</sup>	3X36HT	1	15	055
S375P-480 <sup>1</sup>	3X48HT	1	15	055
S475P-120 <sup>1</sup>	4X12HT	1	18	055
S475P-160 <sup>1</sup>	4X16HT	1	12	055
S475P-200 <sup>1</sup>	4X20HT	1	30	055
S475P-240 <sup>1</sup>	4X24HT	19	19	055
S475P-360 <sup>1</sup>	4X36HT	1	12	055

**Suitable for Oil-Free air handling to 25 psi,  
not for distribution of compressed air or gas**

**Backwater Valves with Extension Kit to Premade Length**

(continued)

Part Number	Size	Std Pk	Pllt Qty	Prod Code
-------------	------	--------	----------	-----------

**Socket x Socket**

S475P-480 <sup>1</sup>	4X48HT	1	12	055
S675P-120 <sup>1</sup>	6X12HT	1	30	055
S675P-160 <sup>1</sup>	6X16HT	1	30	055
S675P-200 <sup>1</sup>	6X20HT	1	30	055
S675P-240 <sup>1</sup>	6X24HT	1	30	055
S675P-360 <sup>1</sup>	6X36HT	1	30	055
S675P-480 <sup>1</sup>	6X48HT	1	1	055

<sup>1</sup> - Size designates nominal valve size x extension height (HT-top of valve to top of extension, inches)

**PVC Service-Access Extension Kit Only to Premade Length**



**PVC Service-Access Extension Kit:** includes factory assembled internal flap assembly, assembly extension pipe, and external extension housing with top access adapter. Requires solvent cement assembly to existing valve and uses existing threaded Access Plug. Standard Extensions are available in convenient increments of 12", 16", 20", 24", 36", and 48" (measured from top of valve to top of extension). Contact Spears® for pricing on custom cut lengths. All extension kits can be cut shorter in the field for custom fits prior to cementing access adapter in place.

**Service-Access Extension Kit Only to Premade Length**

Part Number	Size	Std Pk	Pllt Qty	Prod Code
-------------	------	--------	----------	-----------

SAEK-020-120 <sup>1</sup>	2X12HT	1	65	055
SAEK-020-160 <sup>1</sup>	2X16HT	1	36	055
SAEK-020-200 <sup>1</sup>	2X20HT	1	5	055
SAEK-020-240 <sup>1</sup>	2X24HT	1	5	055
SAEK-020-360 <sup>1</sup>	2X36HT	1	20	055
SAEK-020-480 <sup>1</sup>	2X48HT	1	5	055
SAEK-030-120 <sup>1</sup>	3X12HT	1	65	055
SAEK-030-160 <sup>1</sup>	3X16HT	1	36	055
SAEK-030-200 <sup>1</sup>	3X20HT	1	8	055
SAEK-030-240 <sup>1</sup>	3X24HT	1	49	055
SAEK-030-360 <sup>1</sup>	3X36HT	1	30	055
SAEK-030-480 <sup>1</sup>	3X48HT	1	30	055
SAEK-040-120 <sup>1</sup>	4X12HT	1	36	055
SAEK-040-160 <sup>1</sup>	4X16HT	1	12	055
SAEK-040-200 <sup>1</sup>	4X20HT	1	24	055
SAEK-040-240 <sup>1</sup>	4X24HT	1	12	055
SAEK-040-360 <sup>1</sup>	4X36HT	1	12	055
SAEK-040-480 <sup>1</sup>	4X48HT	1	12	055
SAEK-060-120 <sup>1</sup>	6X12HT	1	4	055



JJ DOWNS INDUSTRIAL PLASTICS INC.



416.236.1884

Toronto, ON

JJDOWNS.COM



Drain, Waste & Vent (DWV) Product  
**Industrial PVC Backwater Valves**

**Industrial PVC Backwater Valves**

**Service-Access Extension Kit Only to Premade Length (continued)**

Part Number	Size	Std Pk	Pltt Qty	Prod Code
<a href="#">SAEK-060-160<sup>1</sup></a>	<b>6X16HT</b>	1	12	055
<a href="#">SAEK-060-200<sup>1</sup></a>	<b>6X20HT</b>	4	12	055
<a href="#">SAEK-060-240<sup>1</sup></a>	<b>6X24HT</b>	1	6	055
<a href="#">SAEK-060-360<sup>1</sup></a>	<b>6X36HT</b>	1	6	055
<a href="#">SAEK-060-480<sup>1</sup></a>	<b>6X48HT</b>	1	7	055

a - Size designates nominal valve size x extension height (HT-top of valve to top of extension, inches)

**PVC Backwater Valve with Extension Components**



**Backwater Valve with Extension Components**

Part Number	Size	Std Pk	Pltt Qty	Prod Code
-------------	------	--------	----------	-----------

**Socket x Socket**

Must be assembled with user supplied pipe (see Table 1)

<a href="#">S275P-AK</a>	<b>2</b>	1	240	055
<a href="#">S375P-AK</a>	<b>3</b>	1	105	055
<a href="#">S475P-AK</a>	<b>4</b>	1	36	055
<a href="#">S675P-AK</a>	<b>6</b>	1	14	055

**PVC Backwater Valve Extension Components Only**



**Backwater Valve Extension Components Only**

Part Number	Size	Std Pk	Pltt Qty	Prod Code
-------------	------	--------	----------	-----------

Must be assembled with user supplied pipe (see Table 1)

<a href="#">S275P-ECK</a>	<b>2</b>	1	240	055
<a href="#">S375P-ECK</a>	<b>3</b>	1	240	055
<a href="#">S475P-ECK</a>	<b>4</b>	1	72	055
<a href="#">S675P-ECK</a>	<b>6</b>	1	48	055

**Backwater Valve Extension Components Only (continued)**

**Table 1: User Supplied Pipe Requirements For Use With Extension Components**

Valve Size	Acceptable RISER Pipe Types for User-Supplied Pipe	Acceptable HANDLE Pipe
2"	4" Class 125 PVC PIPE 4" Sch 40 PVC PIPE	Use any 3/4" IPS plastic pipe <sup>1</sup>
3"	5" Class 125 PVC PIPE 5" Sch 40 PVC PIPE <sup>3</sup> 6" D3034 (SDR 35) PVC SEWER PIPE <sup>2</sup>	
4"	8" Class 125 PVC PIPE 8" Sch 40 PVC PIPE	
6"	10" Class 125 PVC PIPE 10" Sch 40 PVC PIPE	

Note 1: Riser and Handle pipe are *not* the same length. Sch 40 and/or Sch 80 pipe as well as ABS may be used. Special cement must be used to join PVC to ABS.

Note 2: When 6" SDR35 pipe is used, adapter fits pipe inside diameter.

Note 3: DO NOT use Sch 80 for 3" Riser pipe.

**Industrial Backwater Valve Flapper Repair Kit**



**Backwater Valve Flapper Repair Kit**

Part Number	Size	Std Pk	Pltt Qty	Prod Code
-------------	------	--------	----------	-----------

Complete Flapper Assembly replacement

<a href="#">S275P-FRK</a>	<b>2</b>	1	1680	055
<a href="#">S375P-FRK</a>	<b>3</b>	1	1050	055
<a href="#">S475P-FRK</a>	<b>4</b>	1	720	055
<a href="#">S675P-FRK</a>	<b>6</b>	1	240	055

**PVC Backwater Valve Metric Adapters**



**Backwater Valve Metric Adapters**

Part Number	Size	Std Pk	Pltt Qty	Prod Code
-------------	------	--------	----------	-----------

**Metric Socket x ASTM Spigot**

<a href="#">S275MA-063</a>	<b>63mm X 2</b>	50	2400	055
<a href="#">S375MA-090</a>	<b>90mm X 3</b>	25	750	055
<a href="#">S475MA-110</a>	<b>110mm X 4</b>	10	480	055
<a href="#">S675MA-160</a>	<b>160mm X 6</b>	4	120	055

**Suitable for Oil-Free air handling to 25 psi, not for distribution of compressed air or gas**

JJ DOWNS INDUSTRIAL PLASTICS INC.

416.236.1884
Toronto, ON
JJDOWNS.COM