



**Irrigation & Turf Product**  
**PVC Low Head PIP Fabricated Fittings,  
 Risers & Accessories**

**Couplings**

Part Number	Size	Std Pk	Mstr Ctn	Prod Code
-------------	------	--------	----------	-----------

**Coupling**

**Socket x Socket**



**15° Elbow**

**Socket x Socket**



Part Number	Size	Std Pk	Mstr Ctn	Prod Code
280-100234	6	1	10	300
280-100235	8	1	4	300
280-100236	10	1	2	300
280-100237	12	1	2	300
280-100238	15	1	0	300
280-100239	18	1	0	300
280-100240	20	1	0	300

280-100001	4 IPS	1	10	300
280-100002	6	1	5	300
280-100003	8	1	6	300
280-100004	10	1	4	300
280-100005	12	1	4	300
280-100006	15	1	0	300
280-100007	18	1	0	300
280-100008	20	1	0	300

**90° Ells**

**90° Elbow**

**Socket x Socket**



**22-1/2° Elbow**

**Socket x Socket**



280-100354	6	1	4	300
280-100355	8	1	3	300
280-100356	10	1	2	300
280-100357	12	1	2	300
280-100358	15	1	0	300
280-100359	18	1	0	300
280-100360	20	1	0	300

280-100812	6	1	4	300
280-100813	8	1	3	300
280-100814	10	1	0	300
280-100815	12	1	0	300
280-100816	15	1	0	300
280-100817	18	1	0	300
280-100818	20	1	0	300

**Non 90° Ells**

**11-1/4° Elbow**

**Socket x Socket**



**30° Elbow**

**Socket x Socket**



280-100474	6	1	8	300
280-100475	8	1	4	300
280-100476	10	1	2	300
280-100477	12	1	2	300
280-100478	15	1	0	300
280-100479	18	1	0	300
280-100480	20	1	0	300

280-100114	6	1	10	300
280-100115	8	1	8	300
280-100116	10	1	2	300
280-100117	12	1	2	300
280-100118	15	1	0	300
280-100119	18	1	0	300
280-100120	20	1	0	300

Suitable for Oil-Free air handling to 25 psi, not for distribution of compressed air or gas

JJ DOWNS INDUSTRIAL PLASTICS INC.

416.236.1884
Toronto, ON
JJDOWNS.COM



**Irrigation & Turf Product**  
**PVC Low Head PIP Fabricated Fittings,  
 Risers & Accessories**

**Non 90° Ells**

Part Number	Size	Std Pk	Mstr Ctn	Prod Code
-------------	------	--------	----------	-----------

**45° Elbow**

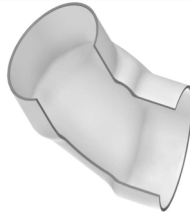
**Socket x Socket**



280-100592	6	1	4	300
280-100593	8	1	4	300
280-100594	10	1	2	300
280-100595	12	1	2	300
280-100596	15	1	0	300
280-100597	18	1	0	300
280-100598	20	1	0	300

**60° Elbow**

**Socket x Socket**



280-100702	6	1	4	300
280-100703	8	1	2	300
280-100704	10	1	0	300
280-100705	12	1	0	300
280-100706	15	1	0	300
280-100707	18	1	0	300
280-100708	20	1	0	300

**Reducer Coupling**

**Coupling - Reducer**

**Socket x Socket**



280-100928	8X6	1	2	300
2829-626	10X6	1	8	300
280-100931	10X8	1	4	300
280-100933	12X6	1	6	300
280-100934	12X8	1	4	300
280-100935	12X10	1	4	300
2829-726	15X6	1	0	300
2829-728	15X8	1	0	309
280-100939	15X10	1	0	300
280-100940	15X12	1	0	300
2829-786	18X6	1	0	300

Part Number	Size	Std Pk	Mstr Ctn	Prod Code
-------------	------	--------	----------	-----------

**Coupling - Reducer (continued)**

**Socket x Socket**

2829-788	18X8	1	0	300
280-100944	18X10	1	0	300
280-100945	18X12	1	0	300
280-100946	18X15	1	0	300
2829-816	20X6	1	0	300
2829-818	20X8	1	0	300
2829-820	20X10	1	0	300
2829-822	20X12	1	0	300
2829-825	20X15	1	0	300
280-100953	20X18	1	0	300

**PIP x IPS Coupling - Reducer**

**Socket x Socket**

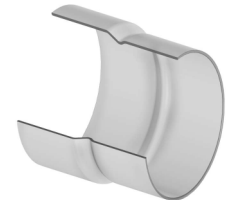


280-101536	6X4	1	4	300
280-101537	8X6	1	8	300
280-101538	10X8	1	4	300
280-101534	12X8	1	4	300
280-101539	12X10	1	4	300
280-101540	15X12	1	0	300

**Adapters**

**IPS x PIP Adapter**

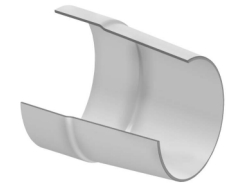
**Socket x Socket**



280-101649	6	1	4	300
280-101650	8	1	4	300
280-101651	10	1	4	300
280-101652	12	1	4	300

**Concrete Adapter**

**Socket x Concrete**



280-101761	6X6	1	5	300
280-101762	8X8	1	6	300
280-101763	10X10	1	4	300
280-101764	12X12	1	4	300
280-101765	12X14	1	0	300
280-101766	15X14	1	0	300

**Suitable for Oil-Free air handling to 25 psi, not for distribution of compressed air or gas**

JJ DOWNS INDUSTRIAL PLASTICS INC.

416.236.1884
Toronto, ON
JJDOWNS.COM



**Irrigation & Turf Product**  
**PVC Low Head PIP Fabricated Fittings,  
 Risers & Accessories**

**Adapters**

Part Number	Size	Std Pk	Mstr Ctn	Prod Code
<b>Concrete Adapter (continued)</b>				
<b>Socket x Concrete</b>				
280-101767	15X15	1	0	300
280-101768	15X16	1	0	300
280-101769	18X18	1	0	300
280-101770	20X20	1	0	300



**Linegate Valve Adapter**

**Linegate x Socket**

280-101777	6	1	6	300
280-101778	8	1	6	300
280-101779	10	1	4	300
280-101780	12	1	4	300
280-101781	15	1	0	300
2845-180	18	1	0	300



**Linegate Valve PIP Adapter**

**Linegate x Socket**

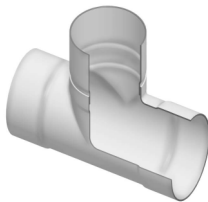
2845-180P	18	1	0	300
-----------	----	---	---	-----

**Tees**

**Tee**

**Socket x Socket x Socket**

280-102502	6	1	8	300
280-102499	6X2	1	6	300
280-102500	6X3	1	4	300
280-102501	6X4	1	4	300
280-102507	8	1	2	300
280-102503	8X2	1	2	300
280-102504	8X3	1	3	300
280-102505	8X4	1	2	300
280-102506	8X6	1	0	300
280-102508	10X2	1	0	300
280-102509	10X3	1	0	300
280-102510	10X4	1	0	300



Part Number	Size	Std Pk	Mstr Ctn	Prod Code
-------------	------	--------	----------	-----------

**Tee (continued)**

**Socket x Socket x Socket**

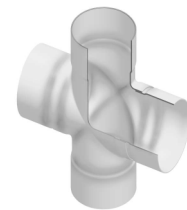
280-102511	10X6	1	0	300
280-102512	10X8	1	0	300
280-102513	10	1	0	300
280-102520	12	1	0	300
280-102514	12X2	1	2	300
280-102515	12X3	1	0	300
280-102516	12X4	1	0	300
280-102517	12X6	1	0	300
280-102518	12X8	1	0	300
280-102519	12X10	1	0	300
280-102528	15	1	0	300
280-102521	15X2	1	0	300
280-102522	15X3	1	0	300
280-102523	15X4	1	0	300
280-102524	15X6	1	0	300
280-102525	15X8	1	0	300
280-102526	15X10	1	0	300
280-102527	15X12	1	0	300
280-102537	18	1	0	300
280-102529	18X2	1	0	300
280-102530	18X3	1	0	300
280-102531	18X4	1	0	300
280-102532	18X6	1	0	300
280-102533	18X8	1	0	300
280-102534	18X10	1	0	300
280-102535	18X12	1	0	300
280-102536	18X15	1	0	300
280-102547	20	1	0	300
280-102538	20X2	1	0	300
280-102539	20X3	1	0	300
280-102540	20X4	1	0	300
280-102541	20X6	1	0	300
280-102542	20X8	1	0	300
280-102543	20X10	1	0	300
280-102544	20X12	1	0	300
280-102545	20X15	1	0	300
280-102546	20X18	1	0	300

**Crosses**

**Cross**

**Socket x Socket x Socket x Socket**

280-103286	6	1	0	300
280-103283	6X2	1	0	300
280-103284	6X3	1	0	300
280-103285	6X4	1	4	300
280-103291	8	1	0	300
280-103287	8X2	1	0	300



**Suitable for Oil-Free air handling to 25 psi, not for distribution of compressed air or gas**

JJ DOWNS INDUSTRIAL PLASTICS INC.

416.236.1884
Toronto, ON
JJDOWNS.COM



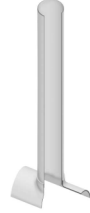
**Irrigation & Turf Product**  
**PVC Low Head PIP Fabricated Fittings,  
 Risers & Accessories**

**Crosses**

Part Number	Size	Std Pk	Mstr Ctn	Prod Code
<b>Cross (continued)</b>				
<b>Socket x Socket x Socket</b>				
280-103288	8X3	1	0	300
280-103289	8X4	1	0	300
280-103290	8X6	1	0	300
280-103297	10	1	0	300
280-103292	10X2	1	2	300
280-103293	10X3	1	0	300
280-103294	10X4	1	0	300
280-103295	10X6	1	0	300
280-103296	10X8	1	0	300
280-103304	12	1	0	300
280-103303	12X10	1	0	300
280-103298	12X2	1	0	300
280-103299	12X3	1	0	300
280-103300	12X4	1	0	300
280-103301	12X6	1	0	300
280-103302	12X8	1	0	300
280-103321	15	1	0	300
280-103313	15X2	1	0	300
280-103314	15X3	1	0	300
280-103315	15X4	1	0	300
280-103316	15X6	1	0	300
280-103317	15X8	1	0	300
280-103318	15X10	1	0	300
280-103319	15X12	1	0	300
280-103342	18	1	0	300
280-103332	18X2	1	0	300
280-103333	18X3	1	0	300
280-103334	18X4	1	0	300
280-103335	18X6	1	0	300
280-103336	18X8	1	0	300
280-103337	18X10	1	0	300
280-103338	18X12	1	0	300
280-103340	18X15	1	0	300
280-103354	20	1	0	300
280-103343	20X2	1	0	300
280-103344	20X3	1	0	300
280-103345	20X4	1	0	300
280-103346	20X6	1	0	300
280-103347	20X8	1	0	300
280-103348	20X10	1	0	300
280-103349	20X12	1	0	300
280-103351	20X15	1	0	300
280-103353	20X18	1	0	300

**Riser Extensions**

Part Number	Size	Std Pk	Mstr Ctn	Prod Code
<b>Orchard Riser</b>				
<b>Saddle x Riser</b>				
2880-04030	4X4	1	0	301
2880-53230	6X4	1	35	301
2880-06030	6X6	1	25	301
2880-58230	8X4	1	25	301
2880-58530	8X6	1	25	301
2880-08030	8X8	1	12	301
2880-62430	10X4	1	30	301
2880-62630	10X6	1	20	301
2880-62830	10X8	1	16	301
2880-10030	10X10	1	6	301
2880-66430	12X4	1	25	301
2880-66630	12X6	1	20	301
2880-66830	12X8	1	12	301
2880-67030	12X10	1	9	301
2880-12030	12X12	1	6	301
2880-72430	15X4	1	25	301
2880-72630	15X6	1	25	301
2880-72830	15X8	1	12	301
2880-73030	15X10	1	9	301
2880-73230	15X12	1	6	301
2880-15030	15X15	1	4	301
2880-78430	18X4	1	25	301
2880-78630	18X6	1	25	301
2880-78830	18X8	1	12	301
2880-79030	18X10	1	9	301
2880-79230	18X12	1	6	301
2880-79530	18X15	1	4	301
2880-18030	18X18	1	3	301
2880-81430	20X4	1	0	301
2880-81630	20X6	1	12	301
2880-81830	20X8	1	12	301
2880-82030	20X10	1	6	301
2880-82230	20X12	1	5	301
2880-82530	20X15	1	4	301
2880-82830	20X18	1	0	301
2880-20030	20X20	1	2	301



Suitable for Oil-Free air handling to 25 psi, not for distribution of compressed air or gas

JJ DOWNS INDUSTRIAL PLASTICS INC.

416.236.1884
Toronto, ON
JJDOWNS.COM



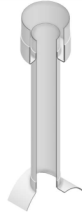
**Irrigation & Turf Product**  
**PVC Low Head PIP Fabricated Fittings,  
 Risers & Accessories**

**Riser Extensions**

Part Number	Size	Std Pk	Mstr Ctn	Prod Code
-------------	------	--------	----------	-----------

**Erosion Pot Riser**

**Saddle x Riser x Pot**



2881-53232	6X4X8	1	16	301
2881-06032	6X6X10	1	0	301
2881-58232	8X4X8	1	20	301
2881-58532	8X6X10	1	0	301
2881-08032	8X8X12	1	9	301
2881-62432	10X4X8	1	16	301
2881-62632	10X6X10	1	0	301
2881-62832	10X8X12	1	12	301
2881-10032	10X10X15	1	0	301
2881-66432	12X4X8	1	20	301
2881-66632	12X6X10	1	12	301
2881-66832	12X8X12	1	12	301
2881-67032	12X10X15	1	0	301
2881-12032	12X12X18	1	0	301
2881-72432	15X4X8	1	0	301
2881-72632	15X6X10	1	12	301
2881-72832	15X8X12	1	0	301
2881-73032	15X10X15	1	0	301
2881-73232	15X12X18	1	0	301
2881-15032	15X15X20	1	0	301
2881-78432	18X4X8	1	0	301
2881-78632	18X6X10	1	0	301
2881-78832	18X8X12	1	0	301
2881-79032	18X10X15	1	0	301
2881-79232	18X12X18	1	0	301
2881-79532	18X15X20	1	0	301
2881-81432	20X4X8	1	0	301
2881-81632	20X6X10	1	0	301
2881-81832	20X8X12	1	0	301
2881-82032	20X10X15	1	0	301
2881-82232	20X12X18	1	0	301
2881-82532	20X15X20	1	0	301

**Mechanical Vent Assembly**

**Saddle x Riser/Vent**



2882-420	4X2	1	10	301
2882-422	4X3	1	0	301
2882-528	6X2	1	10	301
2882-530	6X3	1	10	301

Part Number	Size	Std Pk	Mstr Ctn	Prod Code
-------------	------	--------	----------	-----------

**Mechanical Vent Assembly (continued)**

**Saddle x Riser/Vent**

2882-532	6X4	1	5	301
2882-578	8X2	1	8	301
2882-580	8X3	1	4	301
2882-582	8X4	1	8	301
2882-621	10X2	1	10	301
2882-623	10X3	1	5	301
2882-624	10X4	1	3	301
2882-661	12X2	1	10	301
2882-663	12X3	1	5	301
2882-664	12X4	1	4	301
2882-721	15X2	1	0	301
2882-723	15X3	1	6	301
2882-724	15X4	1	4	301
2882-781	18X2	1	0	301
2882-783	18X3	1	0	301
2882-784	18X4	1	4	301
2882-811	20X2	1	0	301
2882-813	20X3	1	0	301
2882-814	20X4	1	5	301

**Mechanical Vent Riser**

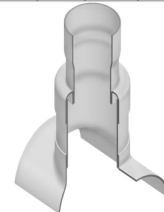
**Saddle x Riser/Vent x Chamber**



2883-52842	6X2X4	1	0	301
2883-57842	8X2X6	1	0	301
2883-58042	8X3X6	1	25	301
2883-62142	10X2X8	1	12	301
2883-62342	10X3X8	1	8	301
2883-62442	10X4X8	1	12	301
2883-66142	12X2X10	1	6	301
2883-66342	12X3X10	1	16	301
2883-66442	12X4X10	1	12	301
2883-72442	15X4X12	1	6	301
2883-78442	18X4X15	1	4	301
2883-81442	20X4X18	1	0	301

**Vent Base**

**Saddle x Riser x Outlet**



2888-532020	6X4X2	1	2	301
2888-585030	8X6X3	1	0	301
2888-585040	8X6X4	1	4	301
2888-628060	10X8X6	1	0	301
2888-670060	12X10X6	1	0	301

Suitable for Oil-Free air handling to 25 psi, not for distribution of compressed air or gas

JJ DOWNS INDUSTRIAL PLASTICS INC.

416.236.1884
Toronto, ON
JJDOWNS.COM



**Irrigation & Turf Product**  
**PVC Low Head PIP Fabricated Fittings,  
 Risers & Accessories**

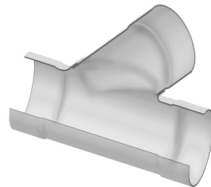
**Riser Extensions**

Part Number	Size	Std Pk	Mstr Ctn	Prod Code
<b>Vent Base (continued)</b>				
<b>Saddle x Riser x Outlet</b>				
2888-732080	15X12X8	1	0	301
2888-795080	18X15X8	1	0	301
2888-828080	20X18X8	1	0	301

**Wyes**

**Wye**

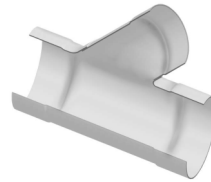
**Socket x Socket x Socket**



2875-060	6	1	2	300
2875-080	8	1	0	300
2875-100	10	1	0	300
2875-120	12	1	0	300
2875-150	15	1	0	300
2875-183	18	1	0	300
2875-200	20	1	0	300

**Wye - Reducing**

**Socket x Socket x Socket**

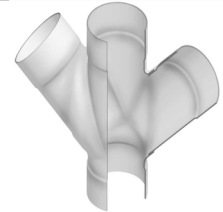


2875-532	6X4	1	4	300
2875-585	8X6	1	0	300
2875-626	10X6	1	0	300
2875-628	10X8	1	0	300
2875-666	12X6	1	0	300
2875-668	12X8	1	0	300
2875-670	12X10	1	0	300
2875-726	15X6	1	0	300
2875-728	15X8	1	0	300
2875-730	15X10	1	0	300
2875-732	15X12	1	0	300
2875-786	18X6	1	0	300
2875-788	18X8	1	0	300
2875-790	18X10	1	0	300
2875-792	18X12	1	0	300
2875-795	18X15	1	0	300
2875-816	20X6	1	0	300
2875-818	20X8	1	0	300
2875-820	20X10	1	0	300
2875-822	20X12	1	0	300
2875-825	20X15	1	0	300
2875-828	20X18	1	0	300

Part Number	Size	Std Pk	Mstr Ctn	Prod Code
-------------	------	--------	----------	-----------

**Double Wye**

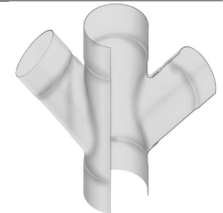
**Socket x Socket x Socket x Socket**



2876-060	6	1	2	300
2876-080	8	1	0	300
2876-100	10	1	0	300
2876-120	12	1	0	300
2876-150	15	1	0	300
2876-183	18	1	0	300
2876-200	20	1	0	300

**Double Wye - Reducing**

**Socket x Socket x Socket x Socket**



2876-585	8X6	1	0	300
2876-626	10X6	1	0	300
2876-628	10X8	1	0	300
2876-666	12X6	1	0	300
2876-668	12X8	1	0	300
2876-670	12X10	1	0	300
2876-726	15X6	1	0	300
2876-728	15X8	1	0	300
2876-730	15X10	1	0	300
2876-732	15X12	1	0	300
2876-786	18X6	1	0	300
2876-788	18X8	1	0	300
2876-790	18X10	1	0	300
2876-792	18X12	1	0	300
2876-795	18X15	1	0	300
2876-816	20X6	1	0	300
2876-818	20X8	1	0	300
2876-820	20X10	1	0	300
2876-822	20X12	1	0	300
2876-825	20X15	1	0	300
2876-828	20X18	1	0	300

Suitable for Oil-Free air handling to 25 psi, not for distribution of compressed air or gas

JJ DOWNS INDUSTRIAL PLASTICS INC.

416.236.1884
Toronto, ON
JJDOWNS.COM



**Irrigation & Turf Product**  
**PVC Low Head PIP Fabricated Fittings,  
 Risers & Accessories**

**Caps**

Part Number	Size	Std Pk	Mstr Ctn	Prod Code
-------------	------	--------	----------	-----------

End Cap



Socket

280-107539	4 IPS	1	10	300
280-107540	6	1	10	300
280-107541	8	10	0	300
280-107542	10	1	10	300
280-107543	12	1	10	300
280-107545	15	1	5	300
280-107547	18	1	5	300
280-107548	20	1	5	300

Part Number	Size	Std Pk	Mstr Ctn	Prod Code
-------------	------	--------	----------	-----------

**Surface Reducer (continued)**

Socket

280-102071	18X6	1	5	300
280-102072	18X8	1	5	300
280-102073	18X10	1	5	300
280-102074	18X12	1	5	300
280-102075	18X15	1	5	300
280-102077	20X2	1	5	300
280-102136	20X3	1	5	300
280-102137	20X4	1	5	300
280-102138	20X6	1	5	300
280-102139	20X8	1	5	300
280-102140	20X10	1	5	300
280-102141	20X12	1	5	300
280-102142	20X15	1	5	300
280-102143	20X18	1	5	300

**Glue-On Saddles**

Surface Reducer



Socket

280-102013	6X2	1	10	300
280-102015	6X3	1	10	300
280-102016	6X4	1	10	300
280-102018	8X2	1	10	300
280-102020	8X3	1	10	300
280-102021	8X4	1	10	300
280-102022	8X6	1	10	300
280-102024	10X2	1	10	300
280-102026	10X3	1	10	300
280-102027	10X4	1	10	300
280-102028	10X6	1	10	300
280-102029	10X8	1	10	300
280-102031	12X2	1	10	300
280-102033	12X3	1	10	300
280-102034	12X4	1	10	300
280-102035	12X6	1	10	300
280-102036	12X8	1	10	300
280-102037	12X10	1	10	300
280-102048	15X2	1	5	300
280-102050	15X3	1	5	300
280-102051	15X4	1	5	300
280-102052	15X6	1	5	300
280-102053	15X8	1	5	300
280-102054	15X10	1	5	300
280-102055	15X12	1	5	300
280-102067	18X2	1	5	300
280-102069	18X3	1	4	300
280-102070	18X4	1	5	300

Saddle



Socket

280-101788	4X2	1	40	300
280-101789	6X2	1	10	300
280-101790	8X2	1	10	300
280-101791	10X2	1	10	300
280-101792	12X2	1	10	300
280-101793	15X2	1	10	300
280-101794	18X2	1	20	300
280-101795	20X2	1	10	300
280-101796	4X3	1	5	300
280-101797	6X3	1	10	300
280-101798	8X3	1	10	300
280-101799	10X3	1	10	300
280-101800	12X3	1	10	300
280-101801	15X3	1	10	300
280-101802	18X3	1	20	300
280-101803	20X3	1	10	300
280-101804	6X4	1	10	300
280-101805	8X4	1	10	300
280-101806	10X4	1	12	300
280-101807	12X4	1	10	300
280-101808	15X4	1	10	300
280-101809	18X4	1	10	300
280-101810	20X4	1	8	300
280-101811	8X6	1	8	300
280-101812	10X6	1	8	300
280-101813	12X6	1	8	300
280-101814	15X6	1	8	300
280-101815	18X6	1	10	300
280-101816	20X6	1	7	300

Suitable for Oil-Free air handling to 25 psi, not for distribution of compressed air or gas

JJ DOWNS INDUSTRIAL PLASTICS INC.

416.236.1884
Toronto, ON
JJDOWNS.COM



**Irrigation & Turf Product**  
**PVC Low Head PIP Fabricated Fittings,  
 Risers & Accessories**

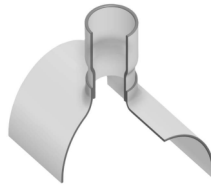
**Glue-On Saddles**

Part Number	Size	Std Pk	Mstr Ctn	Prod Code
<b>Saddle (continued)</b>				
<b>Socket</b>				
280-101817	10X8	1	8	300
280-101818	12X8	1	8	300
280-101819	15X8	1	8	300
280-101820	18X8	1	8	300
280-101821	20X8	1	8	300
280-101822	12X10	1	10	300
280-101823	15X10	1	10	300
280-101824	18X10	1	10	300
280-101825	20X10	1	7	300
280-101826	15X12	1	0	300
280-101827	18X12	1	3	300
280-101828	20X12	1	0	300
280-101829	18X15	1	0	300
280-101830	20X15	1	0	300
280-101831	20X18	1	0	300

Part Number	Size	Std Pk	Mstr Ctn	Prod Code
-------------	------	--------	----------	-----------

<b>Stub Saddle (continued)</b>				
<b>Socket</b>				
280-101911	20X6	1	7	300
280-101912	10X8	1	4	300
280-101913	12X8	1	3	300
280-101914	15X8	1	5	300
280-101915	18X8	1	5	300
280-101916	20X8	1	0	300
280-101917	12X10	1	3	300
280-101918	15X10	1	5	300
280-101919	18X10	1	4	300
280-101920	20X10	1	0	300
280-101921	15X12	1	0	300
280-101922	18X12	1	0	300
280-101923	20X12	1	0	300
280-101924	18X15	1	0	300
280-101925	20X15	1	0	300
280-101926	20X18	1	0	300

**Stub Saddle**



**Same Size Saddle**



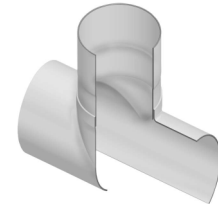
**Socket**

**Socket**

280-101883	4X2	1	10	300
280-101884	6X2	1	10	300
280-101885	8X2	1	10	300
280-101886	10X2	1	10	300
280-101887	12X2	1	10	300
280-101888	15X2	1	10	300
280-101889	18X2	1	10	300
280-101890	20X2	1	10	300
280-101891	4X3	1	10	300
280-101892	6X3	1	5	300
280-101893	8X3	1	5	300
280-101894	10X3	1	5	300
280-101895	12X3	1	5	300
280-101896	15X3	1	5	300
280-101897	18X3	1	10	300
280-101898	20X3	1	5	300
280-101899	6X4	1	10	300
280-101900	8X4	1	10	300
280-101901	10X4	1	10	300
280-101902	12X4	1	10	300
280-101903	15X4	1	10	300
280-101904	18X4	1	10	300
280-101905	20X4	1	10	300
280-101906	8X6	1	6	300
280-101907	10X6	1	8	300
280-101908	12X6	1	6	300
280-101909	15X6	1	8	300
280-101910	18X6	1	10	300

280-101937	6X6	1	10	300
280-101938	8X8	1	5	300
280-101939	10X10	1	5	300
280-101940	12X12	1	4	300
280-101941	15X15	1	0	300
280-101942	18X18	1	0	300
280-101943	20X20	1	0	300

**Same Size Stub Saddle**



**Socket**

280-101949	6X6	1	5	300
280-101950	8X8	1	6	300
280-101951	10X10	1	0	300
280-101952	12X12	1	0	300
280-101953	15X15	1	0	300
280-101954	18X18	1	0	300
280-101955	20X20	1	0	300

Suitable for Oil-Free air handling to 25 psi, not for distribution of compressed air or gas

JJ DOWNS INDUSTRIAL PLASTICS INC.

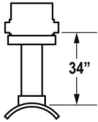
416.236.1884
Toronto, ON
JJDOWNS.COM





Irrigation & Turf Product  
**PVC Low Head PIP Fabricated Fittings,  
 Risers & Accessories**

<b>Distributing Gate Riser</b> (Saddle x Riser x Pot)			
<b>Gates Not Included In MSRP</b> (See CHART #1 on Next Page)			
	Size	Prod Code	Part Number
	<b>6x4x8</b>	301	2884-53234
	<b>8x4x8</b>	301	2884-58234
	<b>8x6x10</b>	301	2884-58534
	<b>10x4x8</b>	301	2884-62434
	<b>10x6x10</b>	301	2884-62634
	<b>10x8x12</b>	301	2884-62834
	<b>12x4x8</b>	301	2884-66434
	<b>12x6x10</b>	301	2884-66634
	<b>12x8x12</b>	301	2884-66834
	<b>12x10x15</b>	301	2884-67034
	<b>15x4x8</b>	301	2884-72334
	<b>15x6x10</b>	301	2884-72634
	<b>15x8x12</b>	301	2884-72834
	<b>15x10x15</b>	301	2884-73034
	<b>15x12x18</b>	301	2884-73234
	<b>18x4x8</b>	301	2884-78434
	<b>18x6x10</b>	301	2884-78634
	<b>18x8x12</b>	301	2884-78834
	<b>18x10x15</b>	301	2884-79034
	<b>18x12x18</b>	301	2884-79234
	<b>20x4x8</b>	301	2884-81434
	<b>20x6x10</b>	301	2884-81634
	<b>20x8x12</b>	301	2884-81834
	<b>20x10x15</b>	301	2884-82034
	<b>20x12x18</b>	301	2884-82234



**HOW TO ORDER A  
 DISTRIBUTING GATE RISER**

Choose the Distributing Gate Riser size required:  
 Example: 6 x 4 x 8  
 (6" Saddle x 4" Riser x 8" Pot)  
 Part Number 2884-53234

Next, choose the Gate size required from CHART #1:  
 Example: 2-1/2" Gates  
 (Code Number "2")

Next, add this Code Number to the end of the Part Number:  
 Example: 2884-53234 2 \_ \_

Next, choose the position required for the gates from CHART #2:  
 Example: Standard 2-Way Gates  
 (Code Number "05")

Next, add this Code Number to the very end of the Part Number:  
 Example: 2884-532342 05

The Part Number is now complete for a  
 6" Saddle x 4" Riser x 8" Pot  
 with 2-1/2" Standard 2-Way Gates -

2884-53234205

**HOW TO CALCULATE A DISTRIBUTING GATE RISER  
 TOTAL MSRP-1 EACH WITH GATES INSTALLED**

Find the base unit part number & price in MSRP-1:

Next, find the part number & price in MSRP-1 for the size of Gate required from CHART #1:

Next, multiply the Gate price by the number of Gates required:

Next, add this amount to the base unit price from MSRP-1 (See Chart 2 "Number of Outlets"), for the Total Price Each:

Suitable for Oil-Free air handling to 25 psi, not for distribution of compressed air or gas

JJ DOWNS INDUSTRIAL PLASTICS INC.

416.236.1884
Toronto, ON
JJDOWNS.COM



**Irrigation & Turf Product**  
**PVC Low Head PIP Fabricated Fittings,  
 Risers & Accessories**

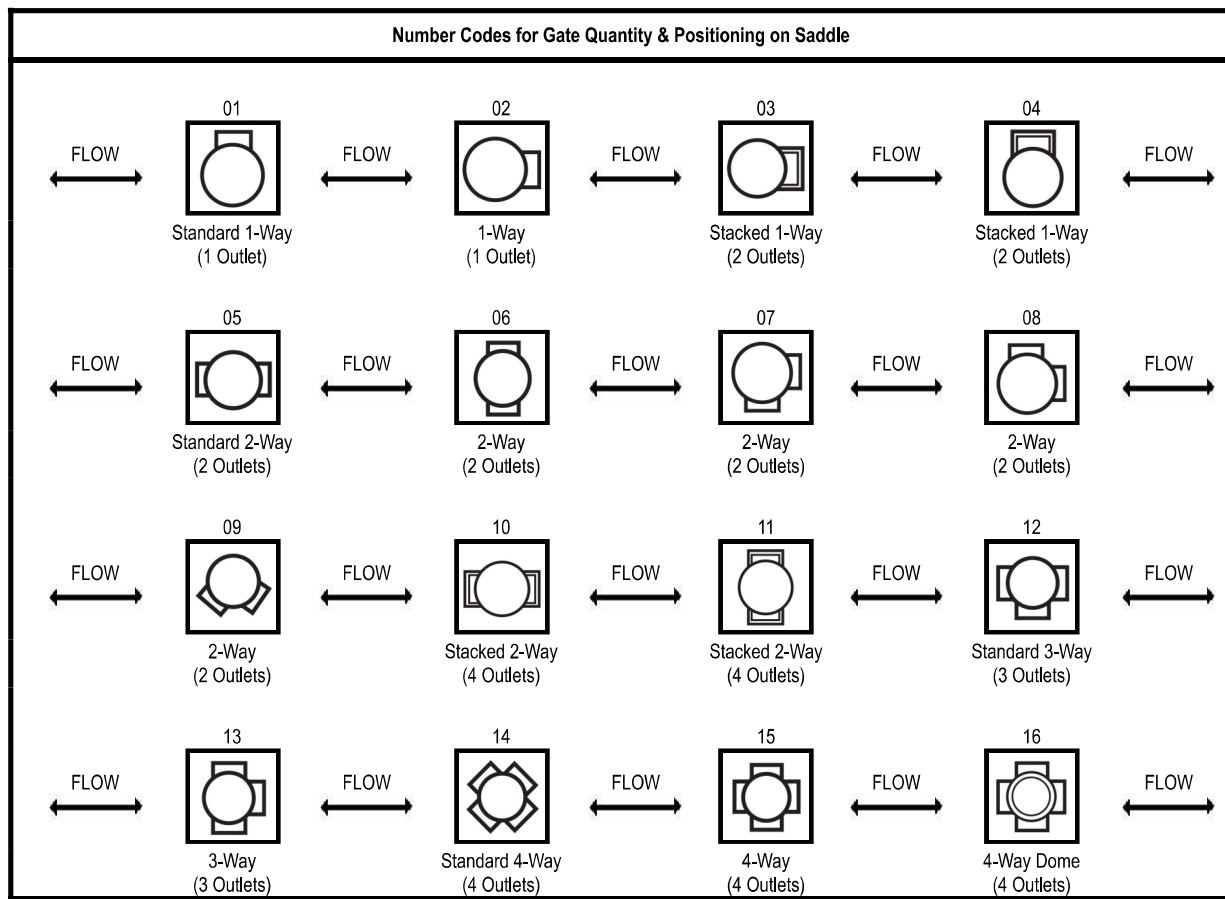
**CHART #1**

Part Number	Gate/Hole Size	Distributing Gate Size Code	Prod Code
280-108443	2" Gate	1	301
280-108444	2- 1/2" Gate	2	301
280-108445	3" Gate	3	301
280-108446	4" Gate	4	301

\* Hole Size Codes MUST be chosen ONLY when ordering with NO GATES INSTALLED.

Number code for Gate Hole positioning must also be chosen from CHART #2 below.

**CHART #2**



**Suitable for Oil-Free air handling to 25 psi, not for distribution of compressed air or gas**

JJ DOWNS INDUSTRIAL PLASTICS INC.

416.236.1884      Toronto, ON      JJDOWNS.COM



Irrigation & Turf Product  
**PVC Low Head PIP Fabricated Fittings,  
 Risers & Accessories**

<b>Distributing Gate Repair Unit (Riser x Pot)</b>			
<b>Gates Not Included In MSRP (See CHART #3 on Next Page)</b>			
	<b>Size</b>	<b>Prod Code</b>	<b>Part Number</b>
	<b>4x8</b>	301	28840-42715__
	<b>6x10</b>	301	28840-53715__
	<b>8x12</b>	301	28840-59115__
	<b>10x15</b>	301	28840-63515__
	<b>12x18</b>	301	28840-67815__

**HOW TO ORDER DISTRIBUTING GATE REPAIR UNIT**

Choose the Repair Unit size required:  
 Example: 4 x 8 Distributing Gate Repair Unit  
 (4" Riser x 8" Pot  
 Part Number 28840-42715\_\_

Next, choose the Gate size required from CHART #3:  
 Example: 2" Gate  
 (Code Number "1")

Next, add this Code Number to the end of the Part Number:  
 Example: 28840-42715\_1\_\_

Next, choose the position required for the gates from CHART #4:  
 Example: 4-Way  
 (Code Number "14")

Next, add this Code Number to the very end of the Part Number:  
 Example: 28840-427151\_1\_4

The Part Number is now complete for a  
 4" Riser x 8" Pot Distributing Gate Riser Repair Unit with 2" 4-Way Gates –

28840-42715114

**HOW TO CALCULATE DISTRIBUTING GATE REPAIR UNIT  
 TOTAL MSRP EACH WITH GATES INSTALLED**

Find the base unit part number & price in MSRP-1:  
 Next, find the part number & price in MSRP-1 for the size of Gate required from CHART #3:  
 Next, multiply the Gate price by the number of Gates required:  
 Next, add this amount to the base unit price from MSRP-1, (See Chart 4 "Number of Outlets"), for the total Price Each:

Suitable for Oil-Free air handling to 25 psi, not for distribution of compressed air or gas

JJ DOWNS INDUSTRIAL PLASTICS INC.

416.236.1884
Toronto, ON
JJDOWNS.COM



Irrigation & Turf Product  
**PVC Low Head PIP Fabricated Fittings,  
 Risers & Accessories**

**CHART #3**









Gate/Hole Size	Gate Size Code	Prod Code
2" Gate	1	301
2- 1/2" Gate	2	301
3" Gate	3	301
4" Gate	4	301
2" Hole*	5	301
2- 1/2" Hole*	6	301
3" Hole*	7	301
4" Hole*	8	301

\* Hole Size Codes MUST be chosen ONLY when ordering with NO GATES INSTALLED.

Number code for Gate Hole positioning must also be chosen from CHART #4 below.

NOTE: 3" Rite Flo Gates can be installed on 6" Risers ONLY.

**CHART #4**

Repair Unit Number Codes for Gate Quantity & Positioning			
02  <b>1-Way</b> (1 Outlet)	04  <b>Stacked 1-Way</b> (2 Outlets)	06  <b>2-Way</b> (2 Outlets)	08  <b>2-Way</b> (2 Outlets)
10  <b>Stacked 2-Way</b> (4 Outlets)	12  <b>3-Way</b> (3 Outlets)	14  <b>4-Way</b> (4 Outlets)	16  <b>4-Way Dome</b> (4 Outlets)

All Low Head PIP Fabricated Fittings showing size outlets of 4" and under are IPS size on that outlet

Suitable for Oil-Free air handling to 25 psi, not for distribution of compressed air or gas





**member**  
**iapd**  
international association  
of plastics distribution

JJ DOWNS INDUSTRIAL PLASTICS INC.

416.236.1884
Toronto, ON
JJDOWNS.COM