



LabWaste® Product
LabWaste® CPVC Corrosive Waste Drainage Systems

Part Number	Size	Std Pk	Mstr Ctn	Prod Code
-------------	------	--------	----------	-----------

P091 Elastomer No- Hub Coupling - IPS Pipe/Metric

IPS Clamp Joint x Metric Clamp Joint

For connection of IPS pipe systems to Metric pipe systems. Shielded FKM (Fluorocarbon) w/gear clamps.

P091-015	1-1/2	20	0	171
P091-020	2	16	0	171
P091-02075	2	24	0	171
P091-030	3	12	0	171
P091-040	4	10	0	171
P091-060	6	5	0	171

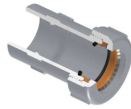


P092 GripLoc™ Transition Coupling -

**H x GripLoc™ Compression
 WARNING: DO NOT INSERT FINGERS
 FKM Gasket**

For connection to PP or PVDF systems

P092-015C	1-1/2	1	16	132
P092-020C	2	1	12	132



P093 Elastomer No- Hub Coupling - Glass/IPS Pipe

IPS Clamp Joint x IPS Clamp Joint

For connection to plain end Glass or any same-size IPS pipe systems. Shielded FKM (Fluorocarbon) w/gear clamps.

P093-015	1-1/2	20	0	171
P093-020	2	16	0	171
P093-030	3	6	0	171
P093-040	4	10	0	171
P093-060	6	5	0	171
P093-080	8	5	0	171



P094 Elastomer No -Hub Coupling-Duriron

IPS Clamp Joint x Duriron Clamp Joint

For connection to Duriron plain end pipe. Shielded FKM (Fluorocarbon) w/gear clamps.

P094-015	1-1/2	20	0	171
P094-020	2	10	0	171
P094-030	3	10	0	171
P094-040	4	10	0	171



P095 Duriron Transition Fitting

Mechanical Joint x Pipe Size

For connection to Duriron system. Requires Duriron mechanical joint coupling.

P095-015C	1-1/2	30	0	169
P095-020C	2	16	0	169
P095-030C	3	9	0	169



Part Number	Size	Std Pk	Mstr Ctn	Prod Code
-------------	------	--------	----------	-----------

**P095 Duriron Transition Fitting (continued)
 Mechanical Joint x Pipe Size**

P095-040C	4	5	0	169
-----------	---	---	---	-----

P096 Grooved Coupling

Grv x Soc

P096-015C	1-1/2	10	60	169
P096-020C	2	10	80	169
P096-030C	3	10	0	169
P096-040C	4	5	0	169
P096-060C	6	5	0	169



P097 Duriron Transition Coupling

Spig x Caulk Joint

For connection to Duriron system. Requires packing and plastic lead. Warning: Do not use hot lead or oiled Oakum

P097-015C	1-1/2	25	0	169
P097-020C	2	15	0	169
P097-030C	3	6	0	169
P097-040C	4	6	0	169



P098 Glass Transition Coupling

Spig x Clamp

For connection to glass system. Requires use of clamp from glass system manufacturer.

P098-015C	1-1/2	50	0	169
P098-020C	2	30	0	169
P098-030C	3	20	0	169
P098-040C	4	12	0	169
P098-060C	6	12	0	169

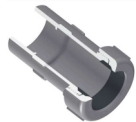


P099 Transition Coupling

H x Compression

For connection to PP or PVDF systems. Requires Safety Retaining Groove Tool. Contact Spears®.

P099-015C	1-1/2	16	0	169
P099-020C	2	12	0	169
P099-030C	3	4	0	169
P099-040C	4	4	0	169
P099-060C	6	1	0	169
P099-080C	8	1	0	169



P100 Coupling

H x H

P100-015C	1-1/2	100	0	160
-----------	-------	-----	---	-----



Suitable for Oil-Free air handling to 25 psi, not for distribution of compressed air or gas

JJ DOWNS INDUSTRIAL PLASTICS INC.

416.236.1884
Toronto, ON
JJDOWNS.COM



LabWaste® Product
LabWaste® CPVC Corrosive Waste Drainage Systems

Part Number	Size	Std Pk	Mstr Ctn	Prod Code
P100 Coupling (continued)				
H x H				
P100-020C	2	100	0	160
P100-030C	3	60	0	160
P100-040C	4	25	0	160
P100-060C	6	5	0	160
P100-080C	8	8	0	159
P100-100C	10	1	0	159
P100-100CF	10	1	2	159
P100-120C	12	1	0	159
P100-120CF	12	1	4	159
P100-140C	14	1	0	159
P100-140CF	14	1	0	159
P100-160CF	16	1	0	159
P100-180CF	18	1	0	159
P100-200CF	20	1	0	159
P100-240CF	24	1	0	159



P101 Female Adapter

Fpt x H

P101-015C	1-1/2	100	0	160
P101-020C	2	100	0	160
P101-030C	3	30	0	160
P101-040C	4	6	0	160
P101-060C	6	10	0	160
P101-080C	8	3	0	159
P101-100CF	10	1	2	159
P101-120CF	12	1	0	159



P102 In increaser - Reducer

H x H

P102-251C	2X1-1/2	25	0	160
P102-337C	3X1-1/2	25	0	160
P102-338C	3X2	20	0	160
P102-420C	4X2	10	0	160
P102-422C	4X3	20	0	160
P102-528CF	6X2	1	12	160
P102-530C	6X3	6	0	160
P102-532C	6X4	4	0	160
P102-578CF	8X2	1	8	159
P102-580CF	8X3	1	8	159
P102-582C	8X4	2	0	159
P102-582CF	8X4	1	4	160
P102-583CF	8X5	1	2	159
P102-585C	8X6	2	0	159
P102-585CF	8X6	1	8	159
P102-623CF	10X3	1	4	159
P102-624C	10X4	2	0	159
P102-624CF	10X4	1	4	159
P102-626C	10X6	1	0	159
P102-626CF	10X6	4	0	159

Part Number	Size	Std Pk	Mstr Ctn	Prod Code
P102 In increaser - Reducer (continued)				
H x H				
P102-628C	10X8	1	0	159
P102-628CF	10X8	1	4	159
P102-663CF	12X3	1	0	159
P102-664CF	12X4	1	0	159
P102-666C	12X6	1	0	159
P102-666CF	12X6	2	0	159
P102-668C	12X8	1	0	159
P102-668CF	12X8	1	2	159
P102-670C	12X10	1	0	159
P102-670CF	12X10	1	4	159
P102-693CF	14X3	1	0	159
P102-694CF	14X4	1	0	159
P102-696CF	14X6	1	0	159
P102-698CF	14X8	1	0	159
P102-700CF	14X10	1	0	159
P102-702CF	14X12	1	0	159
P102-753CF	16X3	1	0	159
P102-754CF	16X4	1	0	159
P102-756CF	16X6	1	0	159
P102-758CF	16X8	1	0	159
P102-760CF	16X10	1	0	159
P102-762CF	16X12	1	0	159
P102-764CF	16X14	1	0	159
P102-786CF	18X6	1	0	159
P102-784CF	18X4	1	0	159
P102-788CF	18X8	1	0	159
P102-790CF	18X10	1	0	159
P102-792CF	18X12	1	0	159
P102-794CF	18X14	1	0	159
P102-796CF	18X16	1	0	159
P102-814CF	20X4	1	0	159
P102-816CF	20X6	1	0	159
P102-818CF	20X8	1	0	159
P102-820CF	20X10	1	0	159
P102-822CF	20X12	1	0	159
P102-824CF	20X14	1	0	159
P102-826CF	20X16	1	0	159
P102-828CF	20X18	1	0	159
P102-904CF	24X4	1	0	159
P102-906CF	24X6	1	0	159
P102-908CF	24X8	1	0	159
P102-910CF	24X10	1	0	159
P102-912CF	24X12	1	0	159
P102-914CF	24X14	1	0	159
P102-916CF	24X16	1	0	159
P102-918CF	24X18	1	0	159
P102-920CF	24X20	1	0	159

Pipe In increaser- Reducer, Eccentric

H x H

P102-420CFE	4X2	1	6	160
P102-422CFE	4X3	1	10	160
P102-528CFE	6X2	1	4	160



Suitable for Oil-Free air handling to 25 psi, not for distribution of compressed air or gas







JJ DOWNS INDUSTRIAL PLASTICS INC.

416.236.1884
Toronto, ON
JJDOWNS.COM



LabWaste® Product
LabWaste® CPVC Corrosive Waste Drainage Systems

Part Number	Size	Std Pk	Mstr Ctn	Prod Code
Pipe Increaser- Reducer,Eccentric (continued)				
H X H				
P102-530CFE	6X3	1	6	160
P102-532CFE	6X4	1	6	160
P102-578CFE	8X2	1	3	159
P102-580CFE	8X3	1	2	159
P102-585CFE	8X6	1	4	159
P102-582CFE	8X4	1	2	160
P102-623CFE	10X3	1	2	160
P102-624CFE	10X4	1	2	159
P102-626CFE	10X6	1	2	159
P102-663CFE	12X3	1	0	159
P102-664CFE	12X4	1	0	159
P102-666CFE	12X6	1	0	159
P102-668CFE	12X8	1	0	159
P102-670CFE	12X10	1	0	160
P102-628CFE	10X8	1	2	159
P102-693CFE	14X3	1	0	159
P102-694CFE	14X4	1	0	159
P102-696CFE	14X6	1	0	159
P102-698CFE	14X8	1	0	159
P102-700CFE	14X10	1	0	159
P102-702CFE	14X12	1	0	159
P102-756CFE	16X6	1	0	159
P102-758CFE	16X8	1	0	159
P102-753CFE	16X3	1	0	159
P102-754CFE	16X4	1	0	159
P102-760CFE	16X10	1	0	159
P102-762CFE	16X12	1	0	159
P102-764CFE	16X14	1	0	159
P102-784CFE	18X4	1	0	159
P102-786CFE	18X6	1	0	159
P102-788CFE	18X8	1	0	159
P102-790CFE	18X10	1	0	159
P102-792CFE	18X12	1	0	159
P102-794CFE	18X14	1	0	159
P102-796CFE	18X16	1	0	159
P102-814CFE	20X4	1	0	159
P102-816CFE	20X6	1	0	159
P102-818CFE	20X8	1	0	159
P102-820CFE	20X10	1	0	159
P102-822CFE	20X12	1	0	159
P102-824CFE	20X14	1	0	159
P102-826CFE	20X16	1	0	159
P102-828CFE	20X18	1	0	159
P102-904CFE	24X4	1	0	159
P102-906CFE	24X6	1	0	159
P102-908CFE	24X8	1	0	159
P102-910CFE	24X10	1	0	159
P102-912CFE	24X12	1	0	159
P102-914CFE	24X14	1	0	159
P102-916CFE	24X16	1	0	159
P102-918CFE	24X18	1	0	159
P102-920CFE	24X20	1	0	159

Part Number	Size	Std Pk	Mstr Ctn	Prod Code
P103P Trap Adapter - Male				
Spig x Slip with Plastic Nut				
P103P-015C	1-1/2	50	0	160
P103P-020C	2	25	0	160
				
P104R Trap Adapter - Female				
w/1-1/2 Plastic Nut & Washer and 1-1/2x1-1/4 Washer H x Slip w/Plastic Nut				
P104R-015C	1-1/2	50	0	160
				
P104X Trap Adapter - Female				
H x Slip w/Chrome Nut & Washer				
P104X-015C	1-1/2	50	0	160
				
P105 Cleanout Adapter				
Spig x Fpt				
P105-015C	1-1/2	50	0	160
P105-020C	2	50	0	160
P105-030C	3	25	0	160
P105-040C	4	10	0	160
P105-060C	6	10	0	160
P105-080C	8	8	0	159
				
P105X Cleanout Adapter with Square Head Plug				
Spig				
P105X-015C	1-1/2	50	0	160
P105X-020C	2	50	0	160
P105X-030C	3	25	0	160
P105X-040C	4	10	0	160
P105X-060C	6	10	0	160
P105X-080C	8	8	0	159
P105X-100CF ¹	10	1	2	159
P105X-120CF ¹	12	1	2	159
P105X-140CF ¹	14	1	0	159
P105X-160CF ¹	16	1	0	159
¹ Sold as sets only Not Pressure Rated				
				
P106 Square Head Cleanout Plug				
Mpt				
P106-015C	1-1/2	50	400	160
P106-020C	2	50	0	160
P106-030C	3	25	0	160
				

Suitable for Oil-Free air handling to 25 psi, not for distribution of compressed air or gas




JJ DOWNS INDUSTRIAL PLASTICS INC.

416.236.1884
Toronto, ON
JJDOWNS.COM



LabWaste® Product
LabWaste® CPVC Corrosive Waste Drainage Systems

Part Number	Size	Std Pk	Mstr Ctn	Prod Code
P106 Square Head Cleanout Plug (continued)				
Mpt				
P106-040C	4	30	0	160
P106-060C	6	10	0	160
P106-080C	8	12	0	159

P107 Flush Bushing

Spig x H



P107-251C	2X1-1/2	50	0	160
P107-337C	3X1-1/2	30	0	160
P107-338C	3X2	30	0	160
P107-420C	4X2	30	0	160
P107-422C	4X3	30	0	160
P107-530C ¹	6X3	10	0	160
P107-532C	6X4	10	0	160
P107-578C	8X2	1	0	159
P107-580C	8X3	4	0	159
P107-582C	8X4	4	0	159
P107-585C	8X6	4	0	159
P107-621C	10X2	1	0	159
P107-623C ¹	10X3	4	0	159
P107-624C ¹	10X4	4	0	159
P107-626C	10X6	3	0	159
P107-626CF	10X6	1	6	159
P107-628C	10X8	3	0	159
P107-628CF	10X8	1	6	159
P107-663CF	12X3	1	2	159
P107-664C ¹	12X4	1	2	159
P107-666C ¹	12X6	3	0	159
P107-668C	12X8	2	0	159
P107-670C	12X10	2	0	159
P107-670CF	12X10	1	3	159
P107-693CF	14X3	1	3	159
P107-694CF	14X4	1	3	159
P107-696CF	14X6	1	3	159
P107-698CF	14X8	1	3	159
P107-700CF	14X10	1	3	159
P107-702CF	14X12	3	0	159
P107-753CF	16X3	1	2	159
P107-754CF	16X4	1	0	159
P107-756CF	16X6	1	2	159
P107-758CF	16X8	1	0	159
P107-760CF	16X10	1	0	159
P107-762CF	16X12	1	2	159
P107-764CF	16X14	1	2	159
P107-784CF	18X4	1	0	159
P107-786CF	18X6	1	0	159
P107-788CF	18X8	1	0	159
P107-790CF	18X10	1	0	159
P107-792CF	18X12	1	0	159
P107-794CF	18X14	1	0	159
P107-796CF	18X16	1	0	159
P107-816CF	20X6	1	0	159

Part Number	Size	Std Pk	Mstr Ctn	Prod Code
P107 Flush Bushing (continued)				
Spig x H				
P107-814CF	20X4	1	0	159
P107-818CF	20X8	1	0	159
P107-820CF	20X10	1	0	159
P107-822CF	20X12	1	0	159
P107-824CF	20X14	1	0	159
P107-826CF	20X16	1	0	159
P107-828CF	20X18	1	0	159
P107-906CF	24X6	1	0	159
P107-908CF	24X8	1	0	159
P107-910CF	24X10	1	0	159
P107-912CF	24X12	1	0	159
P107-904CF	24X4	1	0	159
P107-914CF	24X14	1	0	159
P107-916CF	24X16	1	0	159
P107-918CF	24X18	1	0	159
P107-920CF	24X20	1	0	159

¹ Outlet-sized with Bushing

P108 Flush Bushing (Cleanout Adapter)

Spig x FPT



P108-212C	1-1/2X1-1/4	50	200	160
-----------	-------------	----	-----	-----

P109 Male Adapter

Mpt x H



P109-015C	1-1/2	50	0	160
P109-020C	2	50	0	160
P109-030C	3	25	0	160
P109-040C	4	25	0	160
P109-060C	6	7	0	160

P110 Counter Sunk Cleanout Plug

Mpt



P110-015C	1-1/2	25	150	160
P110-020C	2	25	150	160
P110-030C	3	50	0	160
P110-040C	4	25	0	160
P110-060C	6	10	0	160

P116 Cap

Socket



P116-015C	1-1/2	20	240	160
P116-020C	2	15	180	160
P116-030C	3	10	0	160
P116-040C	4	5	0	160
P116-060C	6	5	0	160

Suitable for Oil-Free air handling to 25 psi, not for distribution of compressed air or gas

JJ DOWNS INDUSTRIAL PLASTICS INC.

416.236.1884
Toronto, ON
JJDOWNS.COM



LabWaste® Product
LabWaste® CPVC Corrosive Waste Drainage Systems

Part Number	Size	Std Pk	Mstr Ctn	Prod Code
P116 Cap (continued)				
Socket				
P116-080C	8	3	0	159
P116-100CF	10	1	3	159
P116-120CF	12	1	5	159
P116-140CF	14	1	4	159
P116-160CF	16	1	2	159
P116-180CF	18	1	2	159
P116-200CF	20	1	2	159
P116-240CF	24	1	0	159

P119 No-Hub Adapter

S x H



P119-015C	1-1/2	25	0	160
P119-020C	2	25	0	160
P119-030C	3	20	0	160
P119-040C	4	15	0	160
P119-060C	6	5	0	160
P119-080CF	8	1	2	160
P119-100CF	10	1	2	160
P119-120CF	12	1	0	159

P123 Hub Adapter

H x S



For connection to Cast Iron system. Requires packing and plastic lead. Warning: Do not use hot lead or oiled Oakum

P123-020C	2	20	0	160
P123-030C	3	25	0	160
P123-040C	4	10	0	160
P123-060CF	6	1	4	159
P123-080CF	8	1	4	159

P130 Repair Coupling

H x H



P130-015C	1-1/2	25	200	160
P130-020C	2	25	0	160
P130-030C	3	10	0	160
P130-040C	4	5	0	160
P130-060C	6	5	0	160
P130-080C	8	6	0	159
P130-100C	10	1	0	159
P130-120C	12	1	0	159

P300 1/4 Bend (90° Ell)

H x H



P300-015C	1-1/2	100	0	160
P300-020C	2	50	0	160

Part Number	Size	Std Pk	Mstr Ctn	Prod Code
P300 1/4 Bend (90° Ell) (continued)				
H x H				
P300-030C	3	25	0	160
P300-040C	4	10	0	160
P300-060C	6	4	0	160
P300-080C	8	2	0	159
P300-080CF	8	1	2	159
P300-100C	10	1	0	159
P300-100CF	10	1	0	159
P300-120C	12	1	0	159
P300-120CF	12	1	0	159
P300-140CF	14	1	0	159
P300-160CF	16	1	0	159
P300-180CF	18	1	0	159
P300-200CF	20	1	0	159
P300-240CF	24	1	0	159

P300S 1/4 Bend w/Side Inlet (90° Ell)

All Hub



P300S-338C	3X3X2	10	0	160
------------	-------	----	---	-----

P302 1/4 Bend, Street (90° Street Ell)

H x Spig



P302-015C	1-1/2	100	0	160
P302-020C	2	25	0	160
P302-030C	3	20	0	160
P302-040C	4	10	0	160
P302-060C	6	4	0	160
P302-080C	8	2	0	159
P302-100C	10	1	0	159
P302-100CF	10	1	0	159
P302-120C	12	1	0	159
P302-120CF	12	1	0	159
P302-140CF	14	1	0	159
P302-160CF	16	1	0	159
P302-180CF	18	1	0	159
P302-200CF	20	1	0	159
P302-240CF	24	1	0	159

P303 1/4 Bend w/Low Heel Inlet

H x H x H



P303-338C	3X3X2	25	0	160
P303-420C	4X4X2	6	0	160

P304 1/4 Bend, Long Sweep (90° LS Ell)

H x H



P304-015C	1-1/2	50	0	160
-----------	-------	----	---	-----

Suitable for Oil-Free air handling to 25 psi, not for distribution of compressed air or gas

JJ DOWNS INDUSTRIAL PLASTICS INC.

416.236.1884
Toronto, ON
JJDOWNS.COM



LabWaste® Product
LabWaste® CPVC Corrosive Waste Drainage Systems

Part Number	Size	Std Pk	Mstr Ctn	Prod Code
P304 1/4 Bend, Long Sweep (90° LS Ell) (continued)				
H x H				
P304-020C	2	25	0	160
P304-030C	3	10	0	160
P304-040C	4	5	0	160
P304-060C	6	5	0	160
P304-080CF	8	1	0	159
P304-100CF	10	1	0	159

Part Number	Size	Std Pk	Mstr Ctn	Prod Code
P306 1/4 Bend Street w/Low Heel Inlet				
S x H x H				
P306-420C	4X4X2	5	0	160

Part Number	Size	Std Pk	Mstr Ctn	Prod Code
P309 1/4 Bend Long Sweep, Street (90° LS Street Ell)				
H x Spig				
P309-015C	1-1/2	50	0	160
P309-020C	2	25	0	160
P309-030C	3	20	0	160
P309-040C	4	5	0	160
P309-060C	6	5	0	160

Part Number	Size	Std Pk	Mstr Ctn	Prod Code
P314 1/32 Bend(11-1/4° Ell)				
S x S				
P314-020CF	2	1	25	160
P314-030CF	3	1	35	160
P314-040CF	4	1	20	160
P314-060CF	6	1	8	160
P314-080CF	8	1	4	159
P314-100CF	10	1	2	159
P314-120CF	12	1	0	159
P314-140CF	14	1	0	159
P314-160CF	16	1	0	159
P314-180CF	18	1	0	159
P314-200CF	20	1	0	159
P314-240CF	24	1	0	159

Part Number	Size	Std Pk	Mstr Ctn	Prod Code
P319 1/6 Bend (60° Ell)				
H x H				
P319-015C	1-1/2	40	0	160
P319-020C	2	25	0	160
P319-030C	3	20	0	160
P319-040C	4	10	0	160
P319-060CF	6	1	4	160
P319-080CF	8	1	2	159
P319-100CF	10	1	2	159
P319-120CF	12	1	0	159
P319-140CF	14	1	0	159
P319-160CF	16	1	0	159
P319-180CF	18	1	0	159
P319-200CF	20	1	0	159

Part Number	Size	Std Pk	Mstr Ctn	Prod Code
P319 1/6 Bend (60° Ell) (continued)				
H x H				
P319-240CF	24	1	0	159

Part Number	Size	Std Pk	Mstr Ctn	Prod Code
P320 1/6 Bend, Street (60° Street Ell)				
H x Spig				
P320-015C	1-1/2	40	0	160
P320-020C	2	25	0	160
P320-030C	3	20	0	160
P320-040C	4	10	0	160

Part Number	Size	Std Pk	Mstr Ctn	Prod Code
P321 1/8 Bend (45° Ell)				
H x H				
P321-015C	1-1/2	100	0	160
P321-020C	2	50	0	160
P321-030C	3	25	0	160
P321-040C	4	15	0	160
P321-060C	6	5	0	160
P321-080C	8	1	0	159
P321-080CF	8	1	4	159
P321-100C	10	1	0	159
P321-100CF	10	1	2	159
P321-120C	12	1	0	159
P321-120CF	12	1	2	159
P321-140CF	14	1	0	159
P321-160CF	16	1	0	159
P321-180CF	18	1	0	159
P321-200CF	20	1	0	159
P321-240CF	24	1	0	159

Part Number	Size	Std Pk	Mstr Ctn	Prod Code
P323 1/8 Bend, Street (45° Street Ell)				
H x Spig				
P323-015C	1-1/2	100	0	160
P323-020C	2	50	0	160
P323-030C	3	25	0	160
P323-040C	4	10	0	160
P323-060C	6	5	0	160
P323-080C	8	1	0	159
P323-100C	10	1	0	159
P323-100CF	10	1	2	159
P323-120C	12	1	0	159
P323-120CF	12	1	0	159
P323-140CF	14	1	0	159
P323-160CF	16	1	0	159
P323-180CF	18	1	0	159
P323-200CF	20	1	0	159
P323-240CF	24	1	0	159

Suitable for Oil-Free air handling to 25 psi, not for distribution of compressed air or gas

JJ DOWNS INDUSTRIAL PLASTICS INC.

416.236.1884
Toronto, ON
JJDOWNS.COM



LabWaste® Product
LabWaste® CPVC Corrosive Waste Drainage Systems

Part Number	Size	Std Pk	Mstr Ctn	Prod Code
-------------	------	--------	----------	-----------

P324 1/16 Bend (22-1/2° Ell)

H x H



P324-015C	1-1/2	50	0	160
P324-020C	2	25	0	160
P324-030C	3	20	0	160
P324-040C	4	15	0	160
P324-060C	6	3	0	160
P324-080C	8	2	0	159
P324-100CF	10	1	0	159
P324-120CF	12	1	0	159
P324-140CF	14	1	0	159
P324-160CF	16	1	0	159
P324-180CF	18	1	0	159
P324-200CF	20	1	0	159
P324-240CF	24	1	0	159

P326 1/16 Bend, Street (22-1/2° Street Ell)

H x Spig



P326-015C	1-1/2	50	0	160
P326-020C	2	25	0	160
P326-030C	3	20	0	160
P326-040C	4	10	0	160
P326-060C	6	5	0	160
P326-080C	8	2	0	159
P326-100CF	10	1	0	159
P326-120CF	12	1	0	159
P326-140CF	14	1	0	159
P326-160CF	16	1	0	159
P326-180CF	18	1	0	159
P326-200CF	20	1	0	159
P326-240CF	24	1	0	159

P327 Double 1/4 Bend (3 Way Ell)

All Hub



P327-015C	1-1/2	20	0	160
P327-020C	2	25	0	160
P327-030C	3	15	0	160
P327-040C	4	6	0	160
P327-241C	2X1-1/2X1-1/2	25	0	160

P331 Vent Ell

H x H



P331-015C	1-1/2	25	0	160
P331-020C	2	30	0	160
P331-030C	3	25	0	160
P331-040C	4	10	0	160

Part Number	Size	Std Pk	Mstr Ctn	Prod Code
-------------	------	--------	----------	-----------

P331 Vent Ell (continued)

H x H

P331-060C	6	5	0	160
-----------	---	---	---	-----

P333 Vent Ell, Street

H x Spig



P333-015C	1-1/2	25	0	160
P333-020C	2	20	0	160
P333-030C	3	25	0	160
P333-040C	4	10	0	160

P335 Trap Elbow (for use with Traps only)

H x S



P335-030C	3	30	0	160
P335-040C	4	25	0	160

P400 Sanitary Tee

All Hub



P400-015C	1-1/2	100	0	160
P400-020C	2	30	0	160
P400-030C	3	30	0	160
P400-040C	4	5	0	160
P400-060C	6	6	0	160
P400-080C	8	2	0	159
P400-080CF	8	1	0	159
P400-100C	10	1	0	159
P400-100CF	10	1	0	159
P400-120C	12	1	0	159
P400-120CF	12	1	0	159
P400-140CF	14	1	0	159
P400-160CF	16	1	0	159
P400-180CF	18	1	0	159
P400-200CF	20	1	0	159
P400-240CF	24	1	0	159

P401 Sanitary Tee, Reducing

All Hub



P401-241C	2X1-1/2X1-1/2	25	0	160
P401-251C	2X2X1-1/2	50	0	160
P401-257C	2X1-1/2X2	25	0	160
P401-337C	3X3X1-1/2	10	0	160
P401-338C	3X3X2	10	0	160
P401-419C	4X1-1/2	1	10	160
P401-420C	4X4X2	10	0	160
P401-422C	4X4X3	10	0	160
P401-530CF	6X3	1	2	160
P401-532C	6X4	4	0	160

Suitable for Oil-Free air handling to 25 psi, not for distribution of compressed air or gas

JJ DOWNS INDUSTRIAL PLASTICS INC.

416.236.1884
Toronto, ON
JJDOWNS.COM



LabWaste® Product
LabWaste® CPVC Corrosive Waste Drainage Systems

Part Number	Size	Std Pk	Mstr Ctn	Prod Code
-------------	------	--------	----------	-----------

P401 Sanitary Tee, Reducing (continued)

All Hub

P401-578CF	8X2	1	2	159
P401-582C	8X4	2	0	159
P401-585CF	8X6	1	0	159
P401-621CF	10X2	1	0	159
P401-623CF	10X3	1	0	159
P401-624CF	10X4	1	0	159
P401-626CF	10X6	1	0	159
P401-628CF	10X8	1	0	159
P401-661CF	12X2	1	0	159
P401-663CF	12X3	1	0	159
P401-664CF	12X4	1	0	159
P401-666CF	12X6	1	0	159
P401-668CF	12X8	1	0	159
P401-670CF	12X10	1	0	159
P401-691CF	14X2	1	0	159
P401-693CF	14X3	1	0	159
P401-694CF	14X4	1	0	159
P401-696CF	14X6	1	0	159
P401-698CF	14X8	1	0	159
P401-700CF	14X10	1	0	159
P401-702CF	14X12	1	0	159
P401-753CF	16X3	1	0	159
P401-754CF	16X4	1	0	159
P401-756CF	16X6	1	0	159
P401-758CF	16X8	1	0	159
P401-760CF	16X10	1	0	159
P401-762CF	16X12	1	0	159
P401-764CF	16X14	1	0	159
P401-784CF	18X4	1	0	159
P401-786CF	18X6	1	0	159
P401-788CF	18X8	1	0	159
P401-790CF	18X10	1	0	159
P401-792CF	18X12	1	0	159
P401-794CF	18X14	1	0	159
P401-796CF	18X16	1	0	159
P401-814CF	20X4	1	0	159
P401-816CF	20X6	1	0	159
P401-818CF	20X8	1	0	159
P401-820CF	20X10	1	0	159
P401-822CF	20X12	1	0	159
P401-824CF	20X14	1	0	159
P401-826CF	20X16	1	0	159
P401-908CF	24X8	1	0	159
P401-906CF	24X6	1	0	159
P401-910CF	24X10	1	0	159
P401-828CF	20X18	1	0	159
P401-904CF	24X4	1	0	159
P401-912CF	24X12	1	0	159
P401-914CF	24X14	1	0	159
P401-916CF	24X16	1	0	159
P401-918CF	24X18	1	0	159
P401-920CF	24X20	1	0	159

Part Number	Size	Std Pk	Mstr Ctn	Prod Code
-------------	------	--------	----------	-----------

P403 Sanitary Tee, Street

S x H x H



P403-015C	1-1/2	20	0	160
P403-020C	2	25	0	160
P403-030C	3	30	0	160
P403-040C	4	10	0	160
P403-060C	6	6	0	160
P403-080C	8	2	0	159
P403-100C	10	1	0	159
P403-120C	12	1	0	159

P404 Sanitary Tee, Street, Reducing

S x H x H



P404-241C	2X1-1/2X1-1/2	50	0	160
P404-251C	2X1-1/2	50	0	160
P404-337C	3X3X1-1/2	10	0	160
P404-338C	3X3X2	10	0	160

P428 Double Sanitary Tee

All Hub



P428-015C	1-1/2	25	0	160
P428-020C	2	25	0	160
P428-030C	3	8	0	160
P428-040C	4	6	0	160
P428-060CF	6	1	0	160
P428-080CF	8	1	0	159
P428-100CF	10	1	0	159
P428-120CF	12	1	0	159
P428-140CF	14	1	0	159
P428-160CF	16	1	0	159
P428-180CF	18	1	0	159
P428-200CF	20	1	0	159
P428-240CF	24	1	0	159

P429 Double Sanitary Tee, Reducing

All Hub



P429-241C	2X1-1/2X1-1/2X1-1/2	25	0	160
P429-251C	2X2X1-1/2X1-1/2	25	0	160
P429-337C	3X3X1-1/2X1-1/2	6	0	160
P429-338C	3X3X2X2	10	0	160
P429-419C	4X4X1-1/2X1-1/2	7	0	160
P429-420C	4X4X2X2	7	0	160
P429-422C	4X4X3X3	8	0	160
P429-532CF	6X6X4X4	1	2	159
P429-578CF	8X8X2X2	1	2	159
P429-580CF	8X8X3X3	1	2	159

Suitable for Oil-Free air handling to 25 psi, not for distribution of compressed air or gas

JJ DOWNS INDUSTRIAL PLASTICS INC.

416.236.1884
Toronto, ON
JJDOWNS.COM



LabWaste® Product
LabWaste® CPVC Corrosive Waste Drainage Systems

Part Number	Size	Std Pk	Mstr Ctn	Prod Code
-------------	------	--------	----------	-----------

P429 Double Sanitary Tee, Reducing (continued)

All Hub

P429-582CF	8X8X4X4	1	2	159
P429-585CF	8X8X6X6	1	0	159
P429-621CF	10X2	1	0	159
P429-623CF	10X3	1	0	159
P429-624CF	10X4	1	0	159
P429-626CF	10X6	1	0	159
P429-628CF	10X8	1	0	159
P429-661CF	12X2	6	0	159
P429-663CF	12X3	1	0	159
P429-664CF	12X4	1	0	159
P429-666CF	12X6	1	0	159
P429-668CF	12X8	1	0	159
P429-670CF	12X10	1	0	159
P429-691CF	14X2	1	0	159
P429-693CF	14X3	1	0	159
P429-694CF	14X4	1	0	159
P429-696CF	14X6	1	0	159
P429-698CF	14X8	1	0	159
P429-700CF	14X10	1	0	159
P429-702CF	14X12	1	0	159
P429-753CF	16X3	1	0	159
P429-754CF	16X4	1	0	159
P429-756CF	16X6	1	0	159
P429-758CF	16X8	1	0	159
P429-760CF	16X10	1	0	159
P429-762CF	16X12	1	0	159
P429-764CF	16X14	1	0	159
P429-784CF	18X4	1	0	159
P429-786CF	18X6	1	0	159
P429-788CF	18X8	1	0	159
P429-790CF	18X10	1	0	159
P429-792CF	18X12	1	0	159
P429-794CF	18X14	1	0	159
P429-796CF	18X16	1	0	159
P429-814CF	20X4	1	0	159
P429-816CF	20X6	1	0	159
P429-818CF	20X8	1	0	159
P429-820CF	20X10	1	0	159
P429-822CF	20X12	1	0	159
P429-824CF	20X14	1	0	159
P429-826CF	20X16	1	0	159
P429-828CF	20X18	1	0	159
P429-904CF	24X4	1	0	159
P429-906CF	24X6	1	0	159
P429-908CF	24X8	1	0	159
P429-910CF	24X10	1	0	159
P429-912CF	24X12	1	0	159
P429-914CF	24X14	1	0	159
P429-916CF	24X16	1	0	159
P429-918CF	24X18	1	0	159
P429-920CF	24X20	1	0	159

Part Number	Size	Std Pk	Mstr Ctn	Prod Code
-------------	------	--------	----------	-----------

P439 Double Sanitary Tee with R&L Side Inlets

All Hub



P439-338C	3X3X3X3X2X2	4	0	160
P439-420C	4X4X4X4X2X2	4	0	160

P441 Vent Tee

All Hub



P441-015C	1-1/2	25	0	160
P441-020C	2	25	0	160
P441-030C	3	10	0	160
P441-040C	4	5	0	160
P441-060C	6	4	0	160
P441-080C	8	2	0	159
P441-080CF	8	1	0	159
P441-100CF	10	1	0	159
P441-120CF	12	1	0	159
P441-140CF	14	1	0	159
P441-160CF	16	1	0	159
P441-180CF	18	1	0	159
P441-200CF	20	1	0	159
P441-240CF	24	1	0	159

P442 Vent Tee- Reducing

All Hub



P442-422CF	4X3	1	0	160
P442-528CF	6X2	1	5	160
P442-530CF	6X3	1	3	160
P442-578CF	8X2	1	2	159
P442-580CF	8X3	1	3	159
P442-582CF	8X4	1	2	159
P442-585C	8X6	2	0	159
P442-623CF	10X3	1	0	159
P442-624CF	10X4	1	0	159
P442-626CF	10X6	1	0	159
P442-628CF	10X8	1	0	159
P442-663CF	12X3	1	0	159
P442-664CF	12X4	1	0	159
P442-666CF	12X6	1	0	159
P442-668CF	12X8	1	0	159
P442-698CF	14X8	1	0	159
P442-670CF	12X10	1	0	159
P442-693CF	14X3	1	0	159
P442-694CF	14X4	1	0	159
P442-696CF	14X6	1	0	159
P442-700CF	14X10	1	0	159
P442-702CF	14X12	1	0	159
P442-753CF	16X3	1	0	159
P442-754CF	16X4	1	0	159
P442-756CF	16X6	1	0	159
P442-758CF	16X8	1	0	159

Suitable for Oil-Free air handling to 25 psi, not for distribution of compressed air or gas

JJ DOWNS INDUSTRIAL PLASTICS INC.

416.236.1884
Toronto, ON
JJDOWNS.COM



LabWaste® Product
LabWaste® CPVC Corrosive Waste Drainage Systems

Part Number	Size	Std Pk	Mstr Ctn	Prod Code
-------------	------	--------	----------	-----------

P442 Vent Tee- Reducing (continued)

All Hub

P442-760CF	16X10	1	0	159
P442-762CF	16X12	1	0	159
P442-764CF	16X14	1	0	159
P442-784CF	18X4	1	0	159
P442-786CF	18X6	1	0	159
P442-788CF	18X8	1	0	159
P442-790CF	18X10	1	0	159
P442-792CF	18X12	1	0	159
P442-794CF	18X14	1	0	159
P442-796CF	18X16	1	0	159
P442-814CF	20X4	1	0	159
P442-816CF	20X6	1	0	159
P442-818CF	20X8	1	0	159
P442-820CF	20X10	1	0	159
P442-822CF	20X12	1	0	159
P442-824CF	20X14	1	0	159
P442-826CF	20X16	1	0	159
P442-828CF	20X18	1	0	159
P442-904CF	24X4	1	0	159
P442-906CF	24X6	1	0	159
P442-908CF	24X8	1	0	159
P442-910CF	24X10	1	0	159
P442-912CF	24X12	1	0	159
P442-914CF	24X14	1	0	159
P442-916CF	24X16	1	0	159
P442-918CF	24X18	1	0	159
P442-920CF	24X20	1	0	159

P444X Cleanout Tee w/Plug

H x H x Fpt



P444X-015C	1-1/2	20	0	160
P444X-020C	2	10	0	160
P444X-030C	3	10	0	160
P444X-040C	4	10	0	160
P444X-060C	6	2	0	160
P444X-080C	8	2	0	159

P445 Cleanout Tee

H x H x Fpt



P445-015C	1-1/2	20	0	160
P445-020C	2	25	0	160
P445-030C	3	10	0	160
P445-040C	4	10	0	160
P445-060C	6	3	0	160

Part Number	Size	Std Pk	Mstr Ctn	Prod Code
-------------	------	--------	----------	-----------

P445X Cleanout Tee with Counter Sunk Plug

H x H



P445X-015C	1-1/2	20	0	160
P445X-020C	2	10	0	160
P445X-030C	3	10	0	160
P445X-040C	4	10	0	160
P445X-060C	6	2	0	160
P445X-080CF	8	1	2	159
P445X-100CF	10	1	0	159
P445X-120CF	12	1	0	159

P448 2-WAY Cleanout

All Hub



P448-030C	3	12	0	160
P448-040C	4	5	0	160

P500 Double Fixture Fitting

All Hub



P500-020C	2X2X2X2	10	0	160
P500-030C	3X3X3X3	10	0	160
P500-241C	2X1-1/2X1-1/2X1-1/2	20	0	160
P500-251C	2X2X1-1/2X1-1/2	20	0	160
P500-338C	3X2X3X3	10	0	160

P501 Combo Wye + 1/8 Bend (Long Turn Tee Wye)

All Hub



P501-015C	1-1/2	50	0	160
P501-020C	2	20	0	160
P501-030C	3	10	0	160
P501-040C	4	8	0	160
P501-060CF	6	1	2	160
P501-080CF	8	1	0	159
P501-100CF	10	1	0	159
P501-120CF	12	1	0	159
P501-140CF	14	1	0	159
P501-160CF	16	1	0	159
P501-180CF	18	1	0	159
P501-200CF	20	1	0	159
P501-240CF	24	1	0	159

P502 Combination Wye + 1/8 Bend Reducing (Long Turn Tee Wye)

All Hub



P502-251C	2X2X1-1/2	20	0	160
P502-337C	3X3X1-1/2	15	0	160

Suitable for Oil-Free air handling to 25 psi, not for distribution of compressed air or gas

JJ DOWNS INDUSTRIAL PLASTICS INC.

416.236.1884
Toronto, ON
JJDOWNS.COM



LabWaste® Product
LabWaste® CPVC Corrosive Waste Drainage Systems

Part Number	Size	Std Pk	Mstr Ctn	Prod Code
-------------	------	--------	----------	-----------

P502 Combination Wye + 1/8 Bend Reducing (Long Turn Tee Wye) (continued)
All Hub

P502-338C	3X3X2	10	0	160
P502-420C	4X4X2	5	0	160
P502-422C	4X4X3	5	0	160
P502-532CF	6X4	1	4	160
P502-578C	8X8X2	2	0	159
P502-578CF	8X2	1	2	159
P502-580CF	8X3	1	0	159
P502-582CF	8X4	1	0	159
P502-585CF	8X6	1	0	159
P502-621CF	10X2	1	2	159
P502-623CF	10X3	1	0	159
P502-624CF	10X4	1	0	159
P502-626CF	10X6	1	0	159
P502-628CF	10X8	1	0	159
P502-661CF	12X2	1	0	159
P502-663CF	12X3	1	0	159
P502-664CF	12X4	1	0	159
P502-666CF	12X6	1	0	159
P502-668CF	12X8	1	0	159
P502-670CF	12X10	1	0	159
P502-691CF	14X2	1	0	159
P502-693CF	14X3	1	0	159
P502-694CF	14X4	1	0	159
P502-696CF	14X6	1	0	159
P502-698CF	14X8	1	0	159
P502-700CF	14X10	1	0	159
P502-702CF	14X12	1	0	159
P502-753CF	16X3	1	0	159
P502-754CF	16X4	1	0	159
P502-756CF	16X6	1	0	159
P502-758CF	16X8	1	0	159
P502-760CF	16X10	1	0	159
P502-762CF	16X12	1	0	159
P502-764CF	16X14	1	0	159
P502-784CF	18X4	1	0	159
P502-786CF	18X6	1	0	159
P502-788CF	18X8	1	0	159
P502-790CF	18X10	1	0	159
P502-792CF	18X12	1	0	159
P502-794CF	18X14	1	0	159
P502-796CF	18X16	1	0	159
P502-814CF	20X4	1	0	159
P502-816CF	20X6	1	0	159
P502-818CF	20X8	1	0	159
P502-820CF	20X10	1	0	159
P502-822CF	20X12	1	0	159
P502-824CF	20X14	1	0	159
P502-826CF	20X16	1	0	159
P502-828CF	20X18	1	0	159
P502-904CF	24X4	1	0	159
P502-906CF	24X6	1	0	159
P502-908CF	24X8	1	0	159
P502-910CF	24X10	1	0	159

Part Number	Size	Std Pk	Mstr Ctn	Prod Code
-------------	------	--------	----------	-----------

P502 Combination Wye + 1/8 Bend Reducing (Long Turn Tee Wye) (continued)
All Hub

P502-914CF	24X14	1	0	159
P502-912CF	24X12	1	0	159
P502-916CF	24X16	1	0	159
P502-918CF	24X18	1	0	159
P502-920CF	24X20	1	0	159

P503 Combination Wye and 1/8 Bend (Two Piece)

All Hub



P503-040C	4	5	0	160
P503-060C	6	4	0	160
P503-080C	8	1	0	159
P503-100C	10	1	0	159
P503-120C	12	1	0	159

P504 Combination Wye and 1/8 Bend, Reducing (Two Piece)

All Hub



P504-241C	2X1-1/2X1-1/2	5	0	160
P504-422C	4X4X3	5	0	160
P504-528C ¹	6X2	5	0	160
P504-530C	6X3	5	0	160
P504-532C	6X4	5	0	160
P504-580C	8X3	2	0	159
P504-582C	8X4	2	0	159
P504-585C	8X6	1	0	159
P504-623C ¹	10X3	1	0	159
P504-624C	10X4	1	0	159
P504-626C	10X6	1	0	159
P504-628C	10X8	1	0	159
P504-663C ¹	12X3	1	0	159
P504-664C	12X4	1	0	159
P504-666C	12X6	1	0	159
P504-668C ¹	12X8	1	0	159
P504-670C	12X10	1	0	159

¹ Sized with Bushing

P507 Double Combination Wye and 1/8 Bend

All Hub



P507-020C	2	10	0	160
P507-030C	3	10	0	160
P507-040C	4	5	0	160
P507-060C	6	2	0	160
P507-080CF	8	1	0	159
P507-100CF	10	1	0	159
P507-120CF	12	1	0	159
P507-140CF	14	1	0	159
P507-160CF	16	1	0	159

Suitable for Oil-Free air handling to 25 psi, not for distribution of compressed air or gas

JJ DOWNS INDUSTRIAL PLASTICS INC.

416.236.1884
Toronto, ON
JJDOWNS.COM



LabWaste® Product
LabWaste® CPVC Corrosive Waste Drainage Systems

Part Number	Size	Std Pk	Mstr Ctn	Prod Code
P507 Double Combination Wye and 1/8 Bend (continued)				
All Hub				
P507-180CF	18	1	0	159
P507-200CF	20	1	0	159
P507-240CF	24	1	0	159
P507-251C	2X2X1-1/2X1-1/2	20	0	160
P507-338C	3X3X2X2	10	0	160
P507-420C	4X4X2X2	5	0	160
P507-422C	4X4X3X3	5	0	160
P507-530C	6X6X3X3	2	0	160
P507-532C	6X6X4X4	4	0	160
P507-532CF	6X4	1	0	160
P507-578CF	8X2	1	2	159
P507-580CF	8X3	1	0	159
P507-582CF	8X4	1	0	159
P507-585CF	8X6	1	0	159
P507-621CF	10X2	1	2	159
P507-623CF	10X3	1	0	159
P507-624CF	10X10X4X4	1	0	159
P507-626CF	10X10X6X6	1	0	159
P507-628CF	10X10X8X8	1	0	159
P507-661CF	12X2	1	0	159
P507-663CF	12X3	1	0	159
P507-664CF	12X12X4X4	1	0	159
P507-666CF	12X12X6X6	1	0	159
P507-668CF	12X12X8X8	1	0	159
P507-670CF	12X12X10X10	1	0	159
P507-691CF	14X2	1	0	159
P507-693CF	14X3	1	0	159
P507-694CF	14X14X4X4	1	0	159
P507-696CF	14X6	1	0	159
P507-698CF	14X8	1	0	159
P507-700CF	14X14X10X10	1	0	159
P507-702CF	14X12	1	0	159
P507-753CF	16X3	1	0	159
P507-754CF	16X4	1	0	159
P507-756CF	16X6	1	0	159
P507-758CF	16X8	1	0	159
P507-760CF	16X10	1	0	159
P507-762CF	16X12	1	0	159
P507-764CF	16X14	1	0	159
P507-784CF	18X4	1	0	159
P507-786CF	18X6	1	0	159
P507-788CF	18X8	1	0	159
P507-790CF	18X10	1	0	159
P507-792CF	18X12	1	0	159
P507-794CF	18X14	1	0	159
P507-796CF	18X16	1	0	159
P507-814CF	20X4	1	0	159
P507-816CF	20X6	1	0	159
P507-818CF	20X8	1	0	159
P507-820CF	20X10	1	0	159
P507-822CF	20X12	1	0	159
P507-824CF	20X14	1	0	159
P507-826CF	20X16	1	0	159
P507-828CF	20X18	1	0	159

Part Number	Size	Std Pk	Mstr Ctn	Prod Code
P507 Double Combination Wye and 1/8 Bend (continued)				
All Hub				
P507-904CF	24X4	1	0	159
P507-906CF	24X6	1	0	159
P507-908CF	24X8	1	0	159
P507-910CF	24X10	1	0	159
P507-912CF	24X12	1	0	159
P507-914CF	24X14	1	0	159
P507-916CF	24X16	1	0	159
P507-918CF	24X18	1	0	159
P507-920CF	24X20	1	0	159

P600 45° Wye



All Hub

P600-015C	1-1/2	45	0	160
P600-020C	2	25	0	160
P600-030C	3	8	0	160
P600-040C	4	8	0	160
P600-060C	6	4	0	160
P600-080C	8	1	0	159
P600-080CF	8	1	0	159
P600-100C	10	1	0	159
P600-100CF	10	1	0	159
P600-120C	12	1	0	159
P600-120CF	12	1	0	159
P600-140CF	14	1	0	159
P600-160CF	16	1	0	159
P600-180CF	18	1	0	159
P600-200CF	20	1	0	159
P600-240CF	24	1	0	159

P601 45° Wye, Reducing



All Hub

P601-241C	2X1-1/2X1-1/2	25	0	160
P601-251C	2X2X1-1/2	25	0	160
P601-257C	2X1-1/2X2	10	0	160
P601-337C	3X3X1-1/2	15	0	160
P601-338C	3X3X2	12	0	160
P601-419C	4X4X1-1/2	10	0	160
P601-420C	4X4X2	10	0	160
P601-422C	4X4X3	10	0	160
P601-528C ¹	6X6X2	5	0	160
P601-530C	6X6X3	6	0	160
P601-532C	6X6X4	5	0	160
P601-578C ¹	8X8X2	2	0	159
P601-578CF	8X8X2	1	3	159
P601-580C	8X8X3	2	0	159
P601-580CF	8X8X3	1	2	159
P601-582CF	8X8X4	1	2	159
P601-582C	8X8X4	2	0	159
P601-585CF	8X8X6	1	0	159

Suitable for Oil-Free air handling to 25 psi, not for distribution of compressed air or gas

JJ DOWNS INDUSTRIAL PLASTICS INC.

416.236.1884
Toronto, ON
JJDOWNS.COM



LabWaste® Product
LabWaste® CPVC Corrosive Waste Drainage Systems

Part Number	Size	Std Pk	Mstr Ctn	Prod Code
P601 45° Wye, Reducing (continued)				
All Hub				
P601-585C	8X8X6	1	0	159
P601-621C ¹	10X10X2	1	0	159
P601-621CF	10X10X2	1	2	159
P601-623C ¹	10X10X3	1	0	159
P601-623CF	10X10X3	1	0	159
P601-624C ¹	10X10X4	1	0	159
P601-624CF	10X10X4	1	0	159
P601-626C	10X10X6	1	0	159
P601-626CF	10X10X6	1	0	159
P601-628C	10X10X8	1	0	159
P601-628CF	10X10X8	1	0	159
P601-661C ¹	12X12X2	1	0	159
P601-661CF	12X12X2	1	0	159
P601-663C ¹	12X12X3	1	0	159
P601-663CF	12X12X3	1	0	159
P601-664C ¹	12X12X4	1	0	159
P601-664CF	12X12X4	1	0	159
P601-666C ¹	12X12X6	1	0	159
P601-666CF	12X12X6	1	0	159
P601-668C ¹	12X12X8	1	0	159
P601-670C ¹	12X10	1	0	159
P601-668CF	12X12X8	1	0	159
P601-670CF	12X12X10	1	0	159
P601-691CF	14X14X2	1	0	159
P601-693CF	14X14X3	1	0	159
P601-694CF	14X14X4	1	0	159
P601-696CF	14X14X6	1	0	159
P601-698CF	14X14X8	1	0	159
P601-700CF	14X14X10	1	0	159
P601-702CF	14X14X12	1	0	159
P601-751CF	16X16X2	1	0	159
P601-753CF	16X16X3	1	0	159
P601-754CF	16X16X4	1	0	159
P601-756CF	16X16X6	1	0	159
P601-758CF	16X16X8	1	0	159
P601-760CF	16X16X10	1	0	159
P601-762CF	16X16X12	1	0	159
P601-764CF	16X16X14	1	0	159
P601-784CF	18X18X4	1	0	159
P601-786CF	18X18X6	1	0	159
P601-788CF	18X18X8	1	0	159
P601-790CF	18X18X10	1	0	159
P601-792CF	18X18X12	1	0	159
P601-794CF	18X14	1	0	159
P601-796CF	18X18X16	1	0	159
P601-814CF	20X20X4	1	0	159
P601-816CF	20X20X6	1	0	159
P601-818CF	20X20X8	1	0	159
P601-820CF	20X20X10	1	0	159
P601-822CF	20X20X12	1	0	159
P601-826CF	20X16	1	0	159
P601-824CF	20X20X14	1	0	159
P601-828CF	20X18	1	0	159
P601-904CF	24X4	1	0	159

Part Number	Size	Std Pk	Mstr Ctn	Prod Code
P601 45° Wye, Reducing (continued)				
All Hub				
P601-906CF	24X24X6	1	0	159
P601-908CF	24X24X8	1	0	159
P601-910CF	24X24X10	1	0	159
P601-912CF	24X24X12	1	0	159
P601-914CF	24X24X14	1	0	159
P601-916CF	24X24X16	1	0	159
P601-918CF	24X24X18	1	0	159
P601-920CF	24X24X20	1	0	159

¹ Sized with Bushing

P602 45° Wye, Street

S x H x H

P602-030C	3	10	0	160
P602-040C	4	10	0	160



P611 Double Wye

All Hub

P611-015C	1-1/2	40	0	160
P611-020C	2	20	0	160
P611-030C	3	15	0	160
P611-040C	4	5	0	160
P611-060C	6	2	0	160
P611-080CF	8	1	0	159
P611-100CF	10	1	0	159
P611-120CF	12	1	0	159
P611-140CF	14	1	0	159
P611-160CF	16	1	0	159
P611-180CF	18	1	0	159
P611-200CF	20	1	0	159
P611-240CF	24	1	0	159



P612 Double Wye, Reducing

All Hub

P612-241C	2X1-1/2X1-1/2X1-1/2	10	0	160
P612-251C	2X2X1-1/2X1-1/2	10	0	160
P612-337C	3X3X1-1/2X1-1/2	10	0	160
P612-338C	3X3X2X2	15	0	160
P612-420C	4X4X2X2	5	0	160
P612-422C	4X4X3X3	5	0	160
P612-530C ¹	6X6X3X3	5	0	160
P612-532C	6X6X4X4	5	0	160
P612-578CF	8X8X2X2	1	2	159
P612-580CF	8X8X3X3	1	0	159
P612-582CF	8X8X4X4	1	0	159
P612-585CF	8X8X6X6	1	0	159
P612-621CF	10X10X2X2	1	0	159
P612-623CF	10X10X3X3	1	0	159



Suitable for Oil-Free air handling to 25 psi, not for distribution of compressed air or gas

JJ DOWNS INDUSTRIAL PLASTICS INC.

416.236.1884
Toronto, ON
JJDOWNS.COM



LabWaste® Product
LabWaste® CPVC Corrosive Waste Drainage Systems

Part Number	Size	Std Pk	Mstr Ctn	Prod Code
P612 Double Wye, Reducing (continued)				
All Hub				
P612-624CF	10X10X4X4	1	0	159
P612-626CF	10X10X6X6	1	0	159
P612-628CF	10X10X8X8	1	0	159
P612-661CF	12X12X2X2	1	0	159
P612-663CF	12X12X3X3	1	0	159
P612-664CF	12X12X4X4	1	0	159
P612-666CF	12X12X6X6	1	0	159
P612-668CF	12X12X8X8	1	0	159
P612-670CF	12X12X10X10	1	0	159
P612-691CF	14X14X2X2	1	0	159
P612-693CF	14X14X3X3	1	0	159
P612-694CF	14X14X4X4	1	0	159
P612-696CF	14X14X6X6	1	0	159
P612-698CF	14X14X8X8	1	0	159
P612-700CF	14X14X10X10	1	0	159
P612-702CF	14X14X12X12	1	0	159
P612-751CF	16X16X2X2	1	0	159
P612-753CF	16X16X3X3	1	0	159
P612-754CF	16X16X4X4	1	0	159
P612-756CF	16X16X6X6	1	0	159
P612-758CF	16X16X8X8	1	0	159
P612-760CF	16X16X10X10	1	0	159
P612-762CF	16X16X12X12	1	0	159
P612-764CF	16X16X14X14	1	0	159
P612-784CF	18X18X4X4	1	0	159
P612-786CF	18X18X6X6	1	0	159
P612-788CF	18X18X8X8	1	0	159
P612-790CF	18X18X10X10	1	0	159
P612-792CF	18X18X12X12	1	0	159
P612-794CF	18X18X14X14	1	0	159
P612-796CF	18X18X16X16	1	0	159
P612-814CF	20X20X4X4	1	0	159
P612-816CF	20X20X6X6	1	0	159
P612-818CF	20X20X8X8	1	0	159
P612-820CF	20X20X10X10	1	0	159
P612-822CF	20X20X12X12	1	0	159
P612-824CF	20X20X14X14	1	0	159
P612-826CF	20X20X16X16	1	0	159
P612-828CF	20X20X18X18	1	0	159
P612-904CF	24X24X4X4	1	0	159
P612-906CF	24X24X6X6	1	0	159
P612-908CF	24X24X8X8	1	0	159
P612-910CF	24X24X10X10	1	0	159
P612-912CF	24X24X12X12	1	0	159
P612-914CF	24X24X14X14	1	0	159
P612-916CF	24X24X16X16	1	0	159
P612-918CF	24X24X18X18	1	0	159
P612-920CF	24X24X20X20	1	0	159

Part Number	Size	Std Pk	Mstr Ctn	Prod Code
-------------	------	--------	----------	-----------

P700 Return Bend



H x H

Part Number	Size	Std Pk	Mstr Ctn	Prod Code
P700-015C	1-1/2	20	0	160
P700-020C	2	35	0	160
P700-030C	3	8	0	160
P700-040C	4	6	0	160
P700-060C	6	2	0	160
P700-080C	8	1	0	159
P700-100C	10	1	0	159
P700-120C	12	1	0	159

P704P Tail Piece Adapter



Spig x Slip w/Plastic Nut

P704P-015C	1-1/2	25	0	160
------------	-------	----	---	-----

P705 S-Trap



H x H

Part Number	Size	Std Pk	Mstr Ctn	Prod Code
P705-015C	1-1/2	25	0	160
P705-020C	2	25	0	160
P705-030C	3	10	0	160
P705-040C	4	5	0	160

P705R Running Trap



H x H

Part Number	Size	Std Pk	Mstr Ctn	Prod Code
P705R-015C	1-1/2	25	0	160
P705R-020C	2	25	0	160
P705R-030C	3	10	0	160
P705R-040C	4	5	0	160
P705R-060C	6	1	3	160

P706X P-Trap



H x H

Part Number	Size	Std Pk	Mstr Ctn	Prod Code
P706X-015C	1-1/2	25	0	160
P706X-020C	2	25	0	160
P706X-030C	3	10	0	160
P706X-040C	4	4	0	160
P706X-060C	6	1	0	160
P706X-080C	8	1	0	159
P706X-100C	10	1	0	159
P706X-120C	12	1	0	159

Suitable for Oil-Free air handling to 25 psi, not for distribution of compressed air or gas

JJ DOWNS INDUSTRIAL PLASTICS INC.

416.236.1884
Toronto, ON
JJDOWNS.COM



LabWaste® Product
LabWaste® CPVC Corrosive Waste Drainage Systems

Part Number	Size	Std Pk	Mstr Ctn	Prod Code
-------------	------	--------	----------	-----------

P707X P-Trap w/Cleanout

H x H



P707X-015C	1-1/2	10	0	160
------------	-------	----	---	-----

P708P P-Trap w/Plastic Nut (Union Connection)

H x H



P708P-015C	1-1/2	25	0	160
P708P-020C	2	25	0	160

P711P L.A Pattern P-Trap w/Plastic Nut

**(Union Connection w/Slip Joint)
Slip x H w/Plastic Nut**



P711P-015C	1-1/2	25	0	160
------------	-------	----	---	-----

P712 Jar Trap

Spigot x H



32 oz. PP Jar

P712-015C	1-1/2	1	0	169
-----------	-------	---	---	-----

P712P Jar Trap w/Tail Piece Adapter

Slip x H



32 oz. PP Jar

P712P-015C	1-1/2	1	0	169
------------	-------	---	---	-----

P720 Drum Trap

H x H



P720-015C	1-1/2	4	0	160
P720-020C	2	4	0	160
P720-030C	3	4	0	160
P720-040C	4	4	0	160

Flange, Van Stone Style CPVC

Soc



854-015C	1-1/2	20	0	090
854-020C	2	10	0	090
854-030C	3	10	0	090
854-040C	4	5	0	090
854-060C	6	5	0	090
854-080C	8	2	0	090
854-100C	10	2	0	091

Part Number	Size	Std Pk	Mstr Ctn	Prod Code
-------------	------	--------	----------	-----------

Flange, Van Stone Style CPVC (continued)

Soc

854-120C	12	2	0	091
854-140C	14	1	0	095
854-160C	16	1	0	095

Waste Assembly

Sink Outlet



LWWA-1	1-1/2	10	0	169
--------	-------	----	---	-----

LabWaste® Air Admittance Valve With Diaphragm Seal

Spigot



Maximum 6 DFU (Drainage Fixture Units)

AADV-015C	1-1/2	12	0	286
-----------	-------	----	---	-----

LabWaste® Air Admittance Valve With Ball Seal

Spigot



Maximum 6 DFU (Drainage Fixture Units)

AAV-015C	1-1/2	12	0	286
----------	-------	----	---	-----

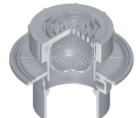
LW1500 Floor Drain with CPVC Adjustable Top w/5" Round Grate

LW1500-015C	1-1/2X5	4	0	169
LW1500-020C	2X5	4	0	169
LW1500-030C	3X5	4	0	169
LW1500-040C	4X5	4	0	169



LW1520 Floor Drain with CPVC Adjustable Top w/5" Round Grate & Strainer

LW1520-015C	1-1/2X5	3	0	169
LW1520-020C	2X5	3	0	169
LW1520-030C	3X5	3	0	169
LW1520-040C	4X5	3	0	169



LW150M Floor Drain with CPVC Adjustable Top w/5" Round Grate & Membrane Collar

LW150M-015C	1-1/2X5	4	0	169
LW150M-020C	2X5	4	0	169
LW150M-030C	3X5	4	0	169
LW150M-040C	4X5	4	0	169



Suitable for Oil-Free air handling to 25 psi, not for distribution of compressed air or gas

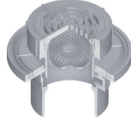
JJ DOWNS INDUSTRIAL PLASTICS INC.

416.236.1884
Toronto, ON
JJDOWNS.COM



LabWaste® Product
LabWaste® CPVC Corrosive Waste Drainage Systems

Part Number	Size	Std Pk	Mstr Ctn	Prod Code
-------------	------	--------	----------	-----------



LW152M Floor Drain with CPVC Adjustable Top w/5" Round Grate, Strainer & Membrane Collar

LW152M-015C	1-1/2X5	4	0	169
LW152M-020C	2X5	4	0	169
LW152M-030C	3X5	4	0	169
LW152M-040C	4X5	4	0	169

Part Number	Size	Std Pk	Mstr Ctn	Prod Code
-------------	------	--------	----------	-----------



LW1510 Floor Cleanout w/Stainless Steel Adjustable Round Top & Solid Access Cover

LW1510-015S	1-1/2X5	4	0	169
LW1510-020S	2X5	6	0	169
LW1510-030S	3X5	4	0	169
LW1510-040S	4X5	4	0	169



Floor Drain with Stainless Steel Adjustable Top w/Round Grate

LW1500-015S	1-1/2X5	4	0	169
LW1600-015S	1-1/2X6	4	0	169
LW1700-015S	1-1/2X7	4	0	169
LW1800-015S	1-1/2X8	4	0	169
LW1500-020S	2X5	4	0	169
LW1600-020S	2X6	4	0	169
LW1700-020S	2X7	4	0	169
LW1800-020S	2X8	4	0	169
LW1500-030S	3X5	4	0	169
LW1600-030S	3X6	4	0	169
LW1700-030S	3X7	2	0	169
LW1800-030S	3X8	4	0	169
LW1500-040S	4X5	4	0	169
LW1600-040S	4X6	4	0	169
LW1700-040S	4X7	4	0	169
LW1800-040S	4X8	4	0	169



LW151M Floor Cleanout w/Stainless Steel Adjustable Round Top, Solid Access Cover & Membrane Collar

LW151M-015S	1-1/2X5	4	0	169
LW151M-020S	2X5	4	0	169
LW151M-030S	3X5	4	0	169
LW151M-040S	4X5	4	0	169

LWTP CPVC Tail Piece



May be cut to desired length

LWTP-015060	1-1/2X6	10	0	169
LWTP-015120	1-1/2X12	20	0	169
LWTP-015140	1-1/2X14	50	0	169

LWTPN CPVC Tail Piece with Nut



May be cut to desired length

LWTPN-015060	1-1/2X6	1	25	169
LWTPN-015120	1-1/2X12	1	25	169
LWTPN-015140	1-1/2X14	1	25	169



Floor Drain with Stainless Steel Adjustable Top w/Round Grate & Membrane Collar

LW150M-015S	1-1/2X5	4	0	169
LW160M-015S	1-1/2X6	4	0	169
LW170M-015S	1-1/2X7	4	0	169
LW180M-015S	1-1/2X8	4	0	169
LW150M-020S	2X5	1	5	169
LW160M-020S	2X6	4	0	169
LW170M-020S	2X7	4	0	169
LW180M-020S	2X8	4	0	169
LW150M-030S	3X5	4	0	169
LW160M-030S	3X6	4	0	169
LW170M-030S	3X7	4	0	169
LW180M-030S	3X8	2	0	169
LW150M-040S	4X5	4	0	169
LW160M-040S	4X6	4	0	169
LW170M-040S	4X7	4	0	169
LW180M-040S	4X8	4	0	169

Pipe - LabWaste® CPVC

10' Lengths, Price Per Foot



May be cut to desired length

LW-015	1-1/2	10	0	161
LW-020	2	10	0	161
LW-030	3	10	0	161
LW-040	4	10	0	161
LW-060	6	10	0	161
LW-080	8	10	0	157
LW-100	10	10	0	157
LW-120	12	10	0	157
LW-140	14	10	0	158
LW-160	16	10	0	158
LW-180	18	10	0	158
LW-200	20	10	0	158
LW-240	24	10	0	158

Suitable for Oil-Free air handling to 25 psi, not for distribution of compressed air or gas

JJ DOWNS INDUSTRIAL PLASTICS INC.

416.236.1884
Toronto, ON
JJDOWNS.COM



LabWaste® Product
LabWaste® CPVC Corrosive Waste Drainage Systems

Part Number	Size	Std Pk	Mstr Ctn	Prod Code
-------------	------	--------	----------	-----------

Pipe Extenders, LabWaste®

Pipe O.D. Spigot x Pipe I.D. Spigot



S0301-15C	1-1/2	50	0	169
S0301-20C	2	25	0	169
S0301-30C	3	25	0	169
S0301-40C	4	20	0	169



LW-5 LabWaste® One-Step CPVC Cement

LW5-020	Pint	12	0	704
LW5-030	Quart	12	0	704
LW5-040	Gallon	6	0	704
LW5-050	5 Gallon	1	0	704

AVERAGE NUMBER OF JOINTS Per Quart of Solvent Cement

PIPE DIAMETER	NUMBER OF JOINTS
1/2"	300
3/4"	200
1"	125
1-1/2"	90
2"	60
3"	40
4"	30
6"	10
8"	5
10"	2-3
12"	1-2

These figures are based on laboratory tests. Due to many field variations, these should be used as a **general guide** only.



Cement Empty Cans

MT-654	Pint	12	0	710
MT-651	Quart	12	0	710
MT-653	Quart	12	0	710
MT-647	Gallon	6	0	710
MT-648	Gallon	6	0	710

MT-647, MT-651 & MT-654 have 1-3/4" Screw Neck
 MT-648 has 2-7/8" Screw Neck
 MT-653 is Paint-Type Can

Cement Brush

For Pint and Quart Cans



KD-110	4-1/2" Length	25	0	710
KD-112	5-1/2" length	25	0	710

1" Brush w/1-3/4" Screw Cap, for pipe size 3/4" - 2"

Part Number	Size	Std Pk	Mstr Ctn	Prod Code
-------------	------	--------	----------	-----------

Cement Cap Swab

5020	4" Length	24	0	710
------	-----------	----	---	-----

Fits 1-3/4" Neck Quart Cans (MT-651). 4" length for pipe size 3" to 8"



Cement Large Mouth Can Swab

4020	4" Length	24	0	710
------	-----------	----	---	-----

Fits 2-7/8" Neck Gallon Can MT-648



Cement Swab with Heavy Handle

4520	4" length	12	0	710
------	-----------	----	---	-----

For Pipe Sizes 6" & Larger



Cement Roller

3020	3" length	20	0	710
------	-----------	----	---	-----

Fits Paint Type Quart Can (MT-653). For use with pipe sizes 3" to 6"



Cement Large Roller

7020	7" length	20	0	710
------	-----------	----	---	-----

Fits 2-7/8" Neck Gallon Can MT-648



Cement Roller with Heavy Handle

Replaceable Cover

5520	4" length	12	0	710
6520	6" length	12	0	710

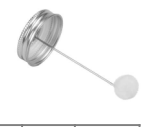
For Pipe Sizes 6" & Larger



Cement Cap Dauber

DP-75	3/4" for Pint	50	0	710
DP-125	1-1/4" for Pint	50	0	710
DQ-125	1-1/4" for Quart	50	0	710

DP Fits Pint Cans
 DQ Fits Quart Cans



Suitable for Oil-Free air handling to 25 psi, not for distribution of compressed air or gas

JJ DOWNS INDUSTRIAL PLASTICS INC.

416.236.1884
Toronto, ON
JJDOWNS.COM



LabWaste® Product
LabWaste® CPVC Corrosive Waste Drainage Systems

Part Number	Size	Std Pk	Mstr Ctn	Prod Code
-------------	------	--------	----------	-----------



Cement Can-Mate Dauber

CM-75	3/4"	50	0	710
CM-150	1-1/4"	50	0	710
3/4" Diameter for pipe size to 1-1/2"				
1-1/4" Diameter for pipe size 1-1/2" to 3"				

Suitable for Oil-Free air handling to 25 psi, not for distribution of compressed air or gas

	<p style="font-size: 0.8em; margin: 0;">member iapd international association of plastics distribution</p>	
JJ DOWNS INDUSTRIAL PLASTICS INC.		
416.236.1884	Toronto, ON	JJDOWNS.COM