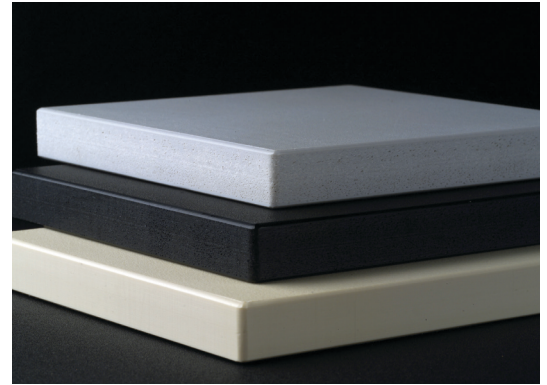
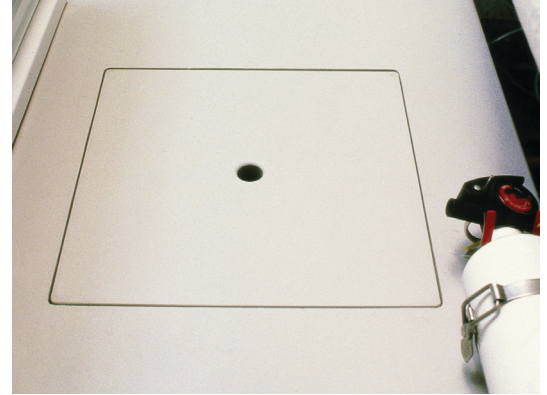




Marine Products



The Lightweight Marine-Grade Cellular Utility Sheet

King StarLite® XL is an economical, cellular (closed cell), utility sheet made from select high-grade King StarBoard® recycled high-density polyethylene. The polymer is up to 35% lighter than the original King StarBoard®. It is the product of a proprietary process called K-Stran™, the most advanced manufacturing process for superior flatness and consistency. King StarLite® XL has a matte finish on both sides of the sheet. It is environmentally stabilized to withstand the harshest outdoor conditions. King StarLite® XL will not rust, delaminate or rot when exposed to UV, humidity or water. It is ideal for a variety of marine applications from boat components, to upholstery substrate and other behind-the-scenes applications where edges aren't visible. The polymer sheet never needs painting or refinishing, works like wood, and is easy to fabricate with common woodworking tools and techniques.

King StarLite® XL is upgradable to King MicroShield® with an advanced antimicrobial technology for protecting the product surface against stain and odor causing bacteria, algae and fungi.*

KING STARLITE^{XL}

Applications

- Deck Components and Equipment Mounts
- Doorstops and Thresholds
- Recess Hatches and Bait Well Covers
- Tackle Centers
- Upholstery Substrate

JJD

JJ DOWNS INDUSTRIAL PLASTICS INC

JJDOWNS.COM

Specifications

Standard Sheet Size

in: 60" x 96"

mm: 1524 mm x 2438 mm

Standard Gauges

in: 1/4" | 3/8" | 1/2" | 3/4"

mm: 6.4 mm | 9.53 mm | 12.7 mm | 19 mm

Approximate Weight

lbs: 40 lbs | 56 lbs | 72 lbs | 108 lbs

kg: 18.14 kg | 25.4 kg | 32.6 kg | 49 kg

Tolerance information: Gauges 1/4" up to 3/4" ± 5%
Length and width plus only at room temperature

Custom sheet sizes and gauges available

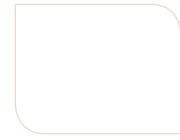
Standard Colors



Utility Black



Utility Gray



Utility White

Note: Color accuracy can vary considerably on computer monitors and printers. Please consult your distributor for a product sample before making critical color choices. Disclaimer: King MicroShield® may affect color.

*For bacteriostatic, fungistatic, & algistatic properties. This product is exempt from registration under 40 CFR 152.25(a). King MicroShield® effectiveness verified by ISO and ASTM standards. This product does not protect users or others from disease-causing bacteria. Always clean this product thoroughly after use.

Properties	Units	ASTM	Nominal Values
Density	g/cm ³	D792	*0.77 & 0.7187
Tensile Strength @ Yield	psi	D638	>3,300
Tensile Modulus	psi	D638	165,000
Elongation @ Yield	%	D638	9.6
Flexural Modulus	psi	D790	130,000
Flexural Stress @ 5% Strain	psi	D790	2,990
Compressive Properties 10% Strain	psi	D695	2,910
Durometer	Shore D	D2240	64.9
Izod Impact Resistance	ft.lbs./in. ²	D256	1.4
Heat Deflection Temp. 66 psi	°C (°F)	D648	87°C (188°F)
Screw Holding Strength	lbs	D1761	325
Flammability	Rating	UL94	HB

All values are determined on specimens prepared according to ASTM.

Nominal values should not be interpreted as specifications.

King StarLite® XL is made entirely from FDA and USDA approved material.

*Nominal value 0.77 density applies to 1/4" gauge only

JJD

JJ DOWNS INDUSTRIAL PLASTICS INC.



416.236.1884

Toronto, ON

JJDOWNS.COM