



Irrigation & Turf Product

- Hose Fittings • Solvent Weld For Flexible PVC Hose &
- Hose Fittings • For 1/2" Polyethylene (.580 I.D.) Hose

• Hose Fittings • Solvent Weld For Flexible PVC Hose

FHT = Female Hose Thread      MHT = Male Hose Thread  
 Fipt = Female Iron Pipe Thread      Mipt = Male Iron Pipe Thread  
 HS = Hose Socket      Soc = IPS Solvent Weld Socket  
 Ins = Male Insert Barb

Part Number	Size	Std Pk	Mstr Ctn	Prod Code
-------------	------	--------	----------	-----------

Hose Coupling

C-44	1/2	200	0	020
C-55	5/8	100	0	020
C-66	3/4	100	0	020

Hose 90° Ell

MHT x Soc

EHP-007	3/4	50	0	020
EHP-101	3/4X1/2	50	0	020

Hose Tee

MHT x MHT x FHT Swivel with Washer

AP-101	3/4	50	0	020
--------	-----	----	---	-----



E-312



W-100



W-101

Hose Washer

Part Number	Size	Std Pk	Mstr Ctn	Prod Code
-------------	------	--------	----------	-----------

Washer Only

E-312	3/4	50	1500	891
W-100	3/4	50	1500	020
W-101	3/4	400	2400	020

Hose Swivel Adapter

Fipt x FHT Swivel with Washer

AP-105	1/2X3/4	50	200	020
AP-106	3/4	50	200	020

Part Number	Size	Std Pk	Mstr Ctn	Prod Code
-------------	------	--------	----------	-----------

Hose Swivel Adapter

Mipt x FHT Swivel with Washer

AP-109	3/4	50	200	020
AP-112	1/2X3/4	50	200	020

Hose Swivel Adapter

FHT Swivel x FHT Swivel with Washer

AP-110	3/4	50	200	020
--------	-----	----	-----	-----

Hose Female Adapter

FHT Swivel x HS with Washer

F-64	3/4X1/2	100	0	020
F-65	3/4X5/8	100	0	020
F-66	3/4	100	0	020

FHT Swivel x Soc

F-64-P	3/4X1/2	100	0	020
F-66-P	3/4	100	0	020

Hose Male Adapter

Mipt x HS

M-44	1/2X1/2	50	300	020
------	---------	----	-----	-----

MHT x HS

M-64	3/4X1/2	50	300	020
M-65	3/4X5/8	50	200	020
M-66	3/4	50	200	020

MHT x Soc

M-64-P	3/4X1/2	50	300	020
M-66-P	3/4	50	200	020

• Hose Fittings • For 1/2" Polyethylene (.580 I.D.) Hose

PE Hose PVC Female Compression Adapter

FHT x Poly Adapter with Insert Expander

F-64B	3/4X1/2	50	600	020
-------	---------	----	-----	-----

PE Hose PVC Male Compression Adapter

MHT x Poly Adapter with Insert Expander

M-64B	3/4X1/2	100	0	020
-------	---------	-----	---	-----

Suitable for Oil-Free air handling to 25 psi, not for distribution of compressed air or gas

JJ DOWNS INDUSTRIAL PLASTICS INC.

member  
international association  
of plastics distribution

416.236.1884
Toronto, ON
JJDOWNS.COM



**Irrigation & Turf Product**  
**• Hose Fittings • For 1/2" Polyethylene (.580 I.D.) Hose & Irrigation Accessories**

**• Hose Fittings • For 1/2" Polyethylene (.580 I.D.) Hose**

Part Number	Size	Std PK	Mstr Ctn	Prod Code
-------------	------	--------	----------	-----------

**PE Hose PVC Insert Tee**

**Ins x Ins x FHT Swivel**



AP-101B	1/2X3/4	50	0	020
---------	---------	----	---	-----

**PE Hose PVC Transition Tee**

**Soc x Soc x Ins**



1102-007	3/4	50	0	040
1102-130	1X1/2	200	0	040
1102-250	2X1-1/4	10	0	040

**PE Hose PVC Insert Coupling**

**Ins x Ins**



1429-005A	1/2	200	0	140
-----------	-----	-----	---	-----

**PE Hose PVC Insert Male Adapter**

**Ins x Mipt**



1436-005A	1/2	200	0	140
-----------	-----	-----	---	-----

**PE Hose PVC Plug**

**MHT**



HPL-6	3/4	100	600	020
-------	-----	-----	-----	-----

**PE Hose PVC Cap**

**FHT with Washer**



AP-100	3/4	200	0	020
--------	-----	-----	---	-----

**PE Hose PVC Closure**

**For 1/2" Poly Hose**



S-HC-1	1/2	200	0	020
--------	-----	-----	---	-----

**Irrigation Accessories**

Spears® PVC Adapter System offers a unique method for expanding field irrigation systems that lends versatility and economy to your project. These adapters are designed to use 1/2", 5/8" or 3/4" vinyl hose, and the Rebar fittings and crosses accept a 1/2" or 3/4" sprinkler base. Transition to the existing system can be accomplished with any one of the threaded outlets offered.

*New Installation* — Spears® PVC Adapter System is designed with threaded or swivel thread connections which simplify the initial installation and minimize material, manpower and installation costs. Additional savings accrue through a reduction of the number of laterals required.

*Improving Existing Systems* — The Spears® Adapter System is ideal for updating existing systems because it readily adapts to aluminum or PVC mains and laterals. Expansion or refinement of the irrigation system is easily accomplished through the versatility afforded the user in the location of the new sprinkler heads.

- BSW = British Standard Whitworth Thread
- FHT = Female Hose Thread
- Fipt = Female Iron Pipe Thread
- MHT = Male Hose Thread
- Mipt = Male Iron Pipe Thread
- NFT = National Fine Thread
- Rebar = Accepts 1/2" Rebar
- Soc = IPS Solvent Weld Socket
- Spig = Spigot

Part Number	Size	Std PK	Mstr Ctn	Prod Code
-------------	------	--------	----------	-----------

**Hose System Riser**

**Soc x Mipt**



RM-64	1/2	75	0	020
RM-66	3/4	75	0	020

**Hose System Riser**

**Soc x MHT**



RM-66-H	3/4	75	0	020
---------	-----	----	---	-----

**Hose System Riser**

**Soc x Fipt**



RF-64	1/2	75	0	020
RF-66	3/4	70	0	020

**Trickle Irrigation Hex Cap**

**Fipt (Less Holes)**



T-1	1/2	800	0	020
-----	-----	-----	---	-----

**Suitable for Oil-Free air handling to 25 psi, not for distribution of compressed air or gas**

JJ DOWNS INDUSTRIAL PLASTICS INC.

416.236.1884
Toronto, ON
JJDOWNS.COM



**Irrigation Accessories & Hose Adapters  
& Sprinkler Accessories**

**Irrigation Accessories**

Part Number	Size	Std Pk	Mstr Ctn	Prod Code
-------------	------	--------	----------	-----------

**Shrub Adapter**



**Fipt x NFT**

PA2010-01	1/2X10-32	50	300	020
PA2010-03	1/2X5/16	50	300	020

**Fipt x Fipt**

PA2010-02	1/2X1/8	50	300	020
-----------	---------	----	-----	-----

**Fipt x BSW**

PA2010-04	1/2X3/8	50	300	020
-----------	---------	----	-----	-----

**Shrub Adapter**



**Soc x NFT**

PA2020-01	1/2X10-32	50	300	020
PA2020-03	1/2X5/16	50	300	020

**Soc x Fipt**

PA2020-02	1/2X1/8	50	300	020
-----------	---------	----	-----	-----

**Soc x BSW**

PA2020-04	1/2X3/8	50	300	020
-----------	---------	----	-----	-----

**Hose Transition Nipple**



**Mipt x MHT (1.790 Length)**

N-1	3/4X3/4	50	300	020
-----	---------	----	-----	-----

**Mipt x Mipt (1.410 Length)**

N-2	3/8X1/2	50	300	020
-----	---------	----	-----	-----

**Mipt x MHT (1.872 Length)**

N-3	1/2X3/4	50	300	020
-----	---------	----	-----	-----

**Transition Nipple**

Part Number	Size	Std Pk	Mstr Ctn	Prod Code
-------------	------	--------	----------	-----------

**Mipt x Mipt Polypropylene (1.480 Length)**

N-4	3/4X1/2	50	300	020
-----	---------	----	-----	-----

**Pipe Support (90° Clip to Body)**



**Without Nail Holes**

PS4-90	1/2	750	0	020
--------	-----	-----	---	-----

**With Nail Holes**

PS4-90N	1/2	750	0	020
---------	-----	-----	---	-----

**Manifold Tee**



**Spig x Soc x Mipt**

476-010	1	20	0	020
---------	---	----	---	-----

Part Number	Size	Std Pk	Mstr Ctn	Prod Code
-------------	------	--------	----------	-----------

**Manifold Tee**



**Spig x Soc x Fipt**

477-010	1	25	0	020
---------	---	----	---	-----

**Hose Adapters**

**For Solid Set Or Moveable Aluminum Systems**

- Fipt = Female Iron Pipe Thread
- MHT = Male Hose Thread
- Mipt = Male Iron Pipe Thread
- Rebar = Accepts 1/2" Rebar

**Hose Cross**



**MHT x MHT x Fipt x MHT**

P-101	3/4X3/4X1/2X3/4	125	0	020
-------	-----------------	-----	---	-----

**MHT x MHT x Fipt x Mipt**

P-100	3/4	125	0	020
-------	-----	-----	---	-----

P-102	3/4X3/4X1/2X3/4	100	0	020
-------	-----------------	-----	---	-----

P-103	3/4X3/4X1/2X1/2	50	0	020
-------	-----------------	----	---	-----

**Hose Rebar Cross**



**MHT x MHT x Fipt x Rebar**

PR-101	3/4X1/2	50	0	020
--------	---------	----	---	-----

PR-103	3/4X3/4X1/2X1/2	50	0	020
--------	-----------------	----	---	-----

**Hose Rebar Ell**



**MHT x Fipt x Rebar**

PR-100	3/4X1/2X1/2	100	0	020
--------	-------------	-----	---	-----

PR-102	3/4X3/4X1/2	100	0	020
--------	-------------	-----	---	-----

**Sprinkler Accessories**

**Irrigation Sprinkler Stand**



**Hose Socket Inlet x Hose Socket Outlet x IPS Riser Outlet**

**Shown without adapters**

ES-443†	1/2X3/8	100	0	020
---------	---------	-----	---	-----

ES-444†	1/2X1/2	100	0	020
---------	---------	-----	---	-----

ES-543*	5/8X1/2X3/8	75	0	020
---------	-------------	----	---	-----

ES-544*	5/8X1/2X1/2	75	0	020
---------	-------------	----	---	-----

ES-553*	5/8X3/8	75	0	020
---------	---------	----	---	-----

ES-554*	5/8X1/2	75	0	020
---------	---------	----	---	-----

ES 653*	3/4X5/8X3/8	75	0	020
---------	-------------	----	---	-----

Suitable for Oil-Free air handling to 25 psi, not for distribution of compressed air or gas

JJ DOWNS INDUSTRIAL PLASTICS INC.

416.236.1884
Toronto, ON
JJDOWNS.COM



**Irrigation & Turf Product**  
**Sprinkler Accessories**

**Sprinkler Accessories**

Part Number	Size	Std Pk	Mstr Ctn	Prod Code
-------------	------	--------	----------	-----------

**Irrigation Sprinkler Stand (continued)**

**Hose Socket Inlet x Hose Socket Outlet x IPS Riser Outlet**

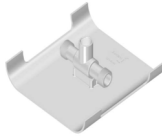
ES-654 <sup>†</sup>	3/4X5/8X1/2	75	0	020
ES-663 <sup>*</sup>	3/4X3/8	75	0	020
ES-664 <sup>*</sup>	3/4X1/2	75	0	020

<sup>†</sup> Dual Connection - Hose Socket Inlets and Outlets accept 1/2" irrigation hose inside, and have 3/4" MHT on the outside.

<sup>\*</sup> Item assembled when ordered - by providing either the ES-443 or ES-444 and one (1) or two (2) F-60 FHT Adapters with the applicable hose Socket size. Check with your servicing Regional Distribution Center for delivery lead time.

**Irrigation Easy Pull Sled**

**Hose Socket Inlet x Hose Socket Outlet x IPS Riser Outlet**



**Shown without adapters**

EP-443 <sup>†</sup>	1/2X3/8	20	0	020
EP-444 <sup>†</sup>	1/2	20	0	020
EP-543 <sup>*</sup>	5/8X1/2X3/8	20	0	020
EP-544 <sup>*</sup>	5/8X1/2X1/2	20	0	020
EP-553 <sup>*</sup>	5/8X3/8	20	0	020
EP-554 <sup>*</sup>	5/8X1/2	20	0	020
EP-653 <sup>*</sup>	3/4X5/8X3/8	20	0	020
EP-654 <sup>*</sup>	3/4X5/8X1/2	20	0	020
EP-663 <sup>*</sup>	3/4X3/8	20	0	020
EP-664 <sup>*</sup>	3/4X1/2	20	0	020

<sup>†</sup> Dual Connection — Hose Socket Inlets and Outlets accept 1/2" irrigation hose inside, and have 3/4" MHT on the outside.

<sup>\*</sup> Item assembled when ordered — by providing either the EP-443 or EP-444 and one (1) or two (2) F-60 FHT Adapters with the applicable hose Socket size. Check with your servicing Regional Distribution Center for delivery lead time.

**Irrigation Tow-Line Tee**

**Soc**



**Assembled as shown**

TL-112	1X1X1/2	15	0	020
TL-123	2X2X1/2	25	0	020

**Soc x Soc x Fipt**

TL-112-1	1X1X1/2	30	0	020
TL-116-1	1-1/4X1-1/4X1/2	30	0	020
TL-120-1	1-1/2X1-1/2X1/2	25	0	020
TL-123-1	2X2X1/2	25	0	020

NOTE: The Tow-Line Tee is used in conjunction with PVC Schedule 40 Pipe with solvent weld connection.

Part Number	Size	Std Pk	Mstr Ctn	Prod Code
-------------	------	--------	----------	-----------

**Irrigation Hose Cross - with Legs**



**Hose Socket Inlet x Hose Socket Outlet x IPS Riser Outlet**

**Shown without adapters**

HC-443 <sup>†</sup>	1/2X3/8	60	0	020
HC-444 <sup>†</sup>	1/2X1/2	60	0	020
HC-543 <sup>*</sup>	5/8X1/2X3/8	60	0	020
HC-544 <sup>*</sup>	5/8X1/2X1/2	60	0	020
HC-553 <sup>*</sup>	5/8X3/8	60	0	020
HC-554 <sup>*</sup>	5/8X1/2	60	0	020
HC-653 <sup>*</sup>	3/4X5/8X3/8	60	0	020
HC-654 <sup>*</sup>	3/4X5/8X1/2	60	0	020
HC-663 <sup>*</sup>	3/4X3/8	60	0	020
HC-664 <sup>*</sup>	3/4X1/2	60	0	020

<sup>†</sup> Dual Connection — Hose Socket Inlets and Outlets accept 1/2" irrigation hose inside, and have 3/4" MHT on the outside.

<sup>\*</sup> Item assembled when ordered — by providing either the HC-443 or HC-444 and one (1) or two (2) F-60 FHT Adapters with the applicable hose Socket size. Check with your servicing Regional Distribution Center for delivery lead time.

NOTE: Hose Crosses are standard with 4" legs. 8" legs are available upon request. Add "-8" at the end of above Part Numbers for 8" legs (for example: HC-443-8). Contact your servicing Regional Distribution Center for MSRP.

**Irrigation Hose Cross - Less Legs**



**Hose Socket Inlet x Hose Socket Inlet x IPS Riser Outlet**

**Shown without adapters**

HC-443-1 <sup>†</sup>	1/2X3/8	220	0	020
HC-444-1 <sup>†</sup>	1/2X1/2	200	0	020
HC-543-1 <sup>*</sup>	5/8X1/2X3/8	60	0	020
HC-544-1 <sup>*</sup>	5/8X1/2X1/2	60	0	020
HC-553-1 <sup>*</sup>	5/8X3/8	50	0	020
HC-554-1 <sup>*</sup>	5/8X1/2	50	0	020
HC-653-1 <sup>*</sup>	3/4X5/8X3/8	60	0	020
HC-654-1 <sup>*</sup>	3/4X5/8X1/2	60	0	020
HC-663-1 <sup>*</sup>	3/4X3/8	60	0	020
HC-664-1 <sup>*</sup>	3/4X1/2	60	0	020

<sup>†</sup> Dual Connection — Hose Socket Inlets and Outlets accept 1/2" irrigation hose inside, and have 3/4" MHT on the outside.

<sup>\*</sup> Item assembled when ordered — by providing either the HC-443-1 or HC-444-1 and one (1) or two (2) F-60 FHT Adapters with the applicable hose Socket size. Check with your servicing Regional Distribution Center for delivery lead time.

**Suitable for Oil-Free air handling to 25 psi, not for distribution of compressed air or gas**

JJ DOWNS INDUSTRIAL PLASTICS INC.

416.236.1884
Toronto, ON
JJDOWNS.COM



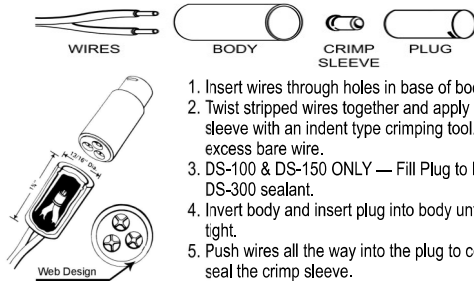
**Irrigation & Turf Product**  
**Dri-Splice Wire Connectors**

**Dri-Splice Wire Connectors**

For use in electrical systems with 30v or less.

The Spears® Dri-Splice Seal designed into each wire hole enables you to stock one connector for all applications. The Dri-Splice Seal features an interference webbing which expands to accommodate #18 through #6 gauge wire sizes. In the event only two holes are used, the Dri-Splice Seal prevents sealant from leaking out through the third hole.

**SOLD IN STANDARD PACK QUANTITIES ONLY**  
**DS-100/DS-150 & DS-400/DS-450 Dri-Splice Wire Connector Installation Information**



allows easy insertion of wire, expands to appropriate wire size and seals any unused holes to prevent sealant run out

**DS-400 & DS-450 Dri-Splice**

- DS-100 fits AWG #18, #14, #12, or #10
- DS-150 fits AWG #14, #12, #10, #8, or #6
- Designed to insure waterproof connections
- Easily installed in the field without special tools
- Permanent protection for underground wire splices
- Requires the use of DS-300 Sealant
- All the features of the DS-100 or DS-150, plus the added benefit of being pre-filled with Dielectric Silicone Sealant
- Reduced inventory requirements
- Insures proper amount and type of Sealant every time
- Eliminates costly waste and clean-up
- Makes installations quick, clean and efficient

**Dri-Splice Wire Connectors**

Part Number	Size	Std Pk	Mstr Ctn	Prod Code
-------------	------	--------	----------	-----------

**Dri-Splice Wire Connector with Crimp Sleeve (Sealant sold separately)**

DS-100	AWG #18, #14, #12, #10	25	400	020
DS-150	AWG #14, #12, #10, #8, #6	25	400	020

**Pre-Filled Dri-Splice Wire Connector with Crimp Sleeve**

DS-400	AWG #18, #14, #12, #10	25	400	020
DS-450	AWG #14, #12, #10, #8, #6	25	400	020

**Crimp Sleeves**

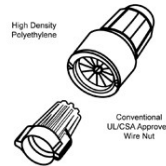
DS-200	AWG #18, #14, #12, #10	25	15000	022
DS-250	AWG #14, #12, #10, #8, #6	25	12500	001

**Dri-Splice Wire Connectors**

Part Number	Size	Std Pk	Mstr Ctn	Prod Code
-------------	------	--------	----------	-----------

**Dri-Splice Sealant For DS-100 and DS-150 (Approx. 30 connections per 5 oz. tube)**

DS-300	AWG #18, #14, #12, #10	24	0	022
--------	------------------------	----	---	-----



**DS-500 Dri-Splice Wire Connector Installation Information**

1. Strip wires and install wire nut.
2. Align wire nut wings with arrows and insert fully into body.

**Dri-Splice Wire Connector General Information**

**DS-300 Sealant\*** (for DS-100 & DS-150) -MSDS available upon request.

**DS-400 & DS-450 Dielectric Silicone Sealant\***-defined as an Article, per OSHA 29 CFR 1910, 1200, which does not require an MSDS.

**DS-500 Dielectric Silicone Sealant\***-defined as an Article, per OSHA 29 CFR 1910, 1200, which does not require an MSDS.

**DS-300** (unopened tube)— One Year\*

**DS-400 & DS-450** — Indefinite at 73°F (23°C)\*

**DS-500**— Indefinite at 73°F (23°C)\*

Sealant:

Shelf Life:

Electrical Systems: For use in electrical systems with 30v or less. UL Listing NOT required in most areas.

DS-100/DS-150 & Plug— PVC

DS-400/DS-450 Body— PVC

Components: Crimp Sleeve— UL and CSA Listed for 18 - 10 awg solid or stranded copper conductors.

DS-500 Body— Polyethylene

Components: Wire Nut— Twist-On Spring Type - UL/CSA Listed for 22 - 10 awg solid or stranded copper wire.

\* Information developed and furnished by the Sealant Manufacturers.



**DS-500 Dri-Splice Wire Connector**  
For use in electrical systems with 30v or less.

Spears® NEW DS-500 Dri Splice Wire Connector is the fast, reliable and clean way of making positive, waterproof connections you can depend on. Simply twist Wire Nut on and insert into Dielectric Silicone Sealant Cartridge. The DS-500 is specially designed for irrigation systems and low voltage lighting, marine and security systems and suitable for direct burial.

- Allows full assembly and check of connection prior to sealing
- Accepts wire combinations from 3 #22 to 3 #10 AWG solid or stranded copper wire
- Special "No-Mess" cartridge design fully encloses sealant
- Internal interlock prevents disengagement of wire nut from sealant cartridge

**Pre-Filled Dri-Splice Wire Connector with Wire Nut**

DS-500	3 AWG #22-#10	25	500	020
--------	---------------	----	-----	-----

**Suitable for Oil-Free air handling to 25 psi, not for distribution of compressed air or gas**

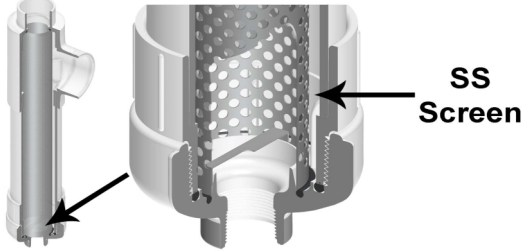
JJ DOWNS INDUSTRIAL PLASTICS INC.

international association of plastics distribution

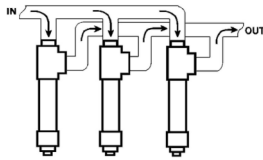
416.236.1884      Toronto, ON      JJDOWN.COM

### Filters

Specially designed for agricultural and irrigation applications. Suitable for any application where cool, filtered water is required. Standard units utilize an internal-to-external filter cartridge.



- 200 psi Working Pressure Non-Shock @ 73°F (23°C)
- Filter Body is made from NSF®-PW Approved PVC Material
- Optional Screen Meshes
- Compact Design, Easy to Clean
- Lightweight, Easy to Install
- Filter Screens are designed using a standard perforated Stainless Steel Screen
- Mesh Sizes include an inner Stainless Steel Cloth with Spring Support (external cloth on reverse flow filters)
- Pressure loss: 100 GPM – 3 psi    50 GPM – 1.25 psi
- May be bushed to required pipe size (Bushings sold separately)



- When more than 100 gpm is required, filters may be installed in parallel
- When installing filter, allow space for removing filter screen for cleaning
- Remove stainless steel filter screen before solvent welding filter to pipe manifold
- When filters are installed in the direct sun, it is suggested the filter body be coated with a water-base latex paint having a high reflectance
- Installation in a shaded area is preferred

**— CAUTION —**

- WATER HAMMER MAY CAUSE SEVERE DAMAGE TO THE FILTER ASSEMBLY.
- BACK FLUSHING IS NOT RECOMMENDED.
- QUALITY GRADE THREAD SEALANT IS RECOMMENDED FOR ALL THREADED PVC CONNECTIONS.

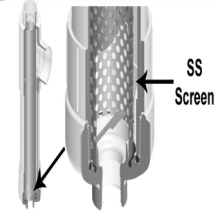
Mesh Size	Hole Size (in.)	Part Number Extension
1/16" Holes	.0625	-16
1/32" Holes	.0312	-32
50 Mesh	.0117	-50
76 Mesh	.0095	-76
100 Mesh	.0059	-100
150 Mesh	.0041	-150
200 Mesh	.0029	-200

Additional Mesh Sizes available on request.

Part Number	Size	Std Pk	Mstr Ctn	Prod Code
-------------	------	--------	----------	-----------

### Irrigation Filter Assembly 100 GPM with Stainless Steel Screen

**100 GPM**



FL-16 <sup>1</sup>	2-1/2 /3 x 4	1	0	020
FL-32 <sup>1</sup>	2-1/2 /3 x 4	1	0	020
FL-50	2-1/2 /3 x 4	1	0	020
FL-76	2-1/2 /3 x 4	1	0	020
FL-100	2-1/2 /3 x 4	1	0	020
FL-150	2-1/2 /3 x 4	1	0	020
FL-200	2-1/2 /3 x 4	1	0	020

<sup>1</sup> Standard FL-16 and FL-32 can be utilized as Reverse Flow Filters by reversing installation from current inlet to outlet and current outlet to inlet.

NOTE: Filter Assemblies are furnished standard with a 1-1/4" IPS tapped cap (FL-4A) for use with a valve, or may be plugged off (plug not furnished). Optional cap available with 1/4" IPS tapping for use with a pressure gauge — specify FL-5A when ordering.

### Irrigation Filter Assembly 50 GPM with Stainless Steel Screen

**50 GPM**



MFL-16 <sup>1</sup>	2-1/2 /3 x 2	1	0	020
MFL-32 <sup>1</sup>	2-1/2 /3 x 2	1	0	020
MFL-50	2-1/2 /3 x 2	1	0	020
MFL-76	2-1/2 /3 x 2	1	0	020
MFL-100	2-1/2 /3 x 2	1	0	020
MFL-150	2-1/2 /3 x 2	1	0	020
MFL-200	2-1/2 /3 x 2	1	0	020

<sup>1</sup> Standard MFL-16 and MFL-32 can be utilized as Reverse Flow Filters by reversing installation from current inlet to outlet and current outlet to inlet.

NOTE: Filter Assemblies are furnished standard with a 1-1/4" IPS tapped cap (FL-4A) for use with a valve, or may be plugged off (plug not furnished). Optional cap available with 1/4" IPS tapping for use with a pressure gauge — specify FL-5A when ordering.

### Irrigation Filter 100 GPM Replacement Screens

**100 GPM (24" Length)**

FL-16-1	1/16" Holes	4	0	020
FL-32-1	1/32" Holes	4	0	020
FL-50-1	50 Mesh	4	0	020
FL-76-1	76 Mesh	4	0	020
FL-100-1	100 Mesh	4	0	020
FL-150-1	150 Mesh	4	0	020
FL-200-1	200 Mesh	4	0	020

**Suitable for Oil-Free air handling to 25 psi, not for distribution of compressed air or gas**



**JJ DOWNS INDUSTRIAL PLASTICS INC.**

416.236.1884    Toronto, ON    JJDOWNS.COM



member  
**iapd**  
international association  
of plastics distribution



**Irrigation & Turf Product**  
**Filters & Reverse Flow Filters**

**Filters**

Part Number	Size	Std Pk	Mstr Ctn	Prod Code
-------------	------	--------	----------	-----------

**Irrigation Filter 50 GPM Replacement Screens**

**50 GPM (12" Length)**



Part Number	Size	Std Pk	Mstr Ctn	Prod Code
MFL-16-1	1/16" Holes	4	0	020
MFL-32-1	1/32" Holes	4	0	020
MFL-50-1	50 Mesh	4	0	020
MFL-76-1	76 Mesh	4	0	020
MFL-100-1	100 Mesh	4	0	020
MFL-150-1	150 Mesh	4	0	020
MFL-200-1	200 Mesh	4	0	020

NOTE: When ordering replacement screens for FL and MFL Series Filters, please provide exact length of old screen within 1/64" to ensure proper fit of new screen in your filter body.

**Irrigation Filter 100 GPM Replacement Body**

**100 GPM Filter Body**



Part Number	Size	Std Pk	Mstr Ctn	Prod Code
FL-11	2-1/2 /3 X 4	1	0	020

**Irrigation Filter 50 GPM Replacement Body**

Part Number	Size	Std Pk	Mstr Ctn	Prod Code
-------------	------	--------	----------	-----------

**50 GPM Filter Body**

MFL-11	2-1/2 /3 X 2	1	0	020
--------	--------------	---	---	-----

**Irrigation Filter Cap & O-ring for Old-Style w/3" Bottom Cap - 1-1/4" Outlet**

**Filter Cap w/Gasket**



Part Number	Size	Std Pk	Mstr Ctn	Prod Code
FL-4A	3X1-1/4	70	0	020
FL-5A	3X1/4	70	0	020

**Irrigation Filter Cap Gasket for Old-Style w/3" Bottom Cap**

**Cap Gasket Only**



FCG-5	3	2	0	020
-------	---	---	---	-----

**Irrigation Filter New Style Body w/4" Bottom Cap & O-ring - 1-1/4" Outlet**

**Filter Cap w/O-rings**



Part Number	Size	Std Pk	Mstr Ctn	Prod Code
FL-4B	4X1-1/4	25	0	020
FL-5B	4X1/4	1	0	020

Includes Cap with Cap O-ring (1) and bottom Filter Bushing O-ring (1)

**Irrigation Filter Cap O-ring for New Style Body**

**Cap O-Ring Only**



Pack of 5

FCB-5-986	---	1	20	891
-----------	-----	---	----	-----

Part Number	Size	Std Pk	Mstr Ctn	Prod Code
-------------	------	--------	----------	-----------

**Irrigation Filter Bushing O-ring for New Style Body**

**Filter Bushing O-Rings**



B-335-60	---	1	0	901
----------	-----	---	---	-----

Each filter uses two (2) Filter Bushing O-rings for top and bottom screen seals  
Filter cartridge specially designed for external-to-internal filtration

**Reverse Flow Filters**

**Irrigation Reverse Flow Filter with Stainless Steel Screen - 100 GPM**

Part Number	Size	Std Pk	Mstr Ctn	Prod Code
-------------	------	--------	----------	-----------

**Socket x Socket/Spigot**

FLR-16 <sup>1</sup>	4X2-1/2 /3	1	0	020
FLR-32 <sup>1</sup>	4X2-1/2 /3	1	0	020
FLR-50	4X2-1/2 /3	1	0	020
FLR-76	4X2-1/2 /3	1	0	020
FLR-100	4X2-1/2 /3	1	0	020
FLR-150	4X2-1/2 /3	1	0	020
FLR-200	4X2-1/2 /3	1	0	020

<sup>1</sup> Standard FL-16 and FL-32 can be utilized as Reverse Flow Filters by reversing installation from current inlet to outlet and current outlet to inlet.

**Irrigation Reverse Flow Filter with Stainless Steel Screen - 50 GPM**

Part Number	Size	Std Pk	Mstr Ctn	Prod Code
-------------	------	--------	----------	-----------

**Socket x Socket/Spigot**

MFLR-16 <sup>1</sup>	2X2-1/2 /3	1	0	020
MFLR-32 <sup>1</sup>	2X2-1/2 /3	1	0	020
MFLR-50	2X2-1/2 /3	1	0	020
MFLR-76	2X2-1/2 /3	1	0	020
MFLR-100	2X2-1/2 /3	1	0	020
MFLR-150	2X2-1/2 /3	1	0	020
MFLR-200	2X2-1/2 /3	1	0	020

<sup>1</sup> Standard MFL-16 and MFL-32 can be utilized as Reverse Flow Filters by reversing installation from current inlet to outlet and current outlet to inlet.

**Irrigation Filter Reverse Flow SS Replacement Screens (24" Length)**

**100 GPM**



Part Number	Size	Std Pk	Mstr Ctn	Prod Code
FL-16-1	1/16" Holes	4	0	020
FL-32-1	1/32" Holes	4	0	020
FLR-50-1	50 Mesh	4	0	020
FLR-76-1	76 Mesh	4	0	020
FLR-100-1	100 Mesh	4	0	020
FLR-150-1	150 Mesh	4	0	020
FLR-200-1	200 Mesh	4	0	020

Suitable for Oil-Free air handling to 25 psi, not for distribution of compressed air or gas

JJ DOWNS INDUSTRIAL PLASTICS INC.

416.236.1884
Toronto, ON
JJDOWNS.COM



Irrigation & Turf Product  
**Reverse Flow Filters**

**Reverse Flow Filters**

Part Number	Size	Std Pk	Mstr Ctn	Prod Code
-------------	------	--------	----------	-----------

Irrigation Filter Reverse Flow SS Replacement Screens  
(12" Length)

**50 GPM**



MFL-16-1	<b>1/16" Holes</b>	4	0	020
MFL-32-1	<b>1/32" Holes</b>	4	0	020
MFLR-50-1	<b>50 Mesh</b>	4	0	020
MFLR-76-1	<b>76 Mesh</b>	4	0	020
MFLR-100-1	<b>100 Mesh</b>	4	0	020
MFLR-150-1	<b>150 Mesh</b>	4	0	020
MFLR-200-1	<b>200 Mesh</b>	4	0	020

Suitable for Oil-Free air handling to 25 psi, not for distribution of compressed air or gas

 <b>JJD</b> JJ DOWNS INDUSTRIAL PLASTICS INC.	 <small>member iapd international association of plastics distribution</small>
416.236.1884      Toronto, ON      JJDOWNNS.COM	

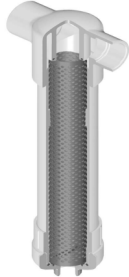




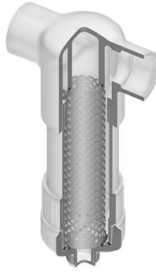
Irrigation & Turf Product  
**In-line Tee Style Filters and  
 Reverse In-line Tee Style Filters**

**In-line Tee Style Filters and Reverse In-line Tee Style Filters**

100 GPM and 50 GPM • PVC White • Buna O-ring Seal



100 GPM



50 GPM

- In-line Design Simplifies Installation.
- Allows Easy Parallel Filter Configuration for Increased Flow and Filtration.
- Removable Type 304 Stainless Steel Filter Cartridges in Assorted Perforations and Screen Mesh.
- Standard Flow Filter (Internal-to-External) Traps Sediment on Inside of Cartridge, Reverse Flow Filter (External-to-Internal) Traps Sediment on Outside of Cartridge.
- Convenient Bottom Drain with 1-1/4" NPT Stainless Steel Reinforced Plastic Thread and Plug. Optional Cap with 1/4" Outlet Available.
- 200 psi Working Pressure for Water @ 73°F (23°C).
- Manufactured from NSF® Certified PVC Material.

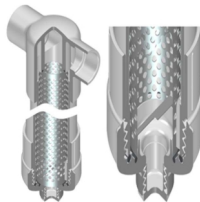
Mesh Size	Hole Size (in.)	Part Number Extension
1/16" Holes	.0625	-16
1/32" Holes	.0312	-32
50 Mesh	.0117	-50
76 Mesh	.0095	-76
100 Mesh	.0059	-100
150 Mesh	.0041	-150
200 Mesh	.0029	-200

Additional Mesh Sizes available on request.  
 Example: TF-50 = 50 Mesh

Part Number	Size	Std Pk	Mstr Ctn	Prod Code
-------------	------	--------	----------	-----------

**Irrigation Tee Filter - 100 GPM PVC White**

**Buna-N O-ring Seal with Stainless Steel Screen**



TF-16*	2-1/2 /3 x 2-1/2 /3	1	0	020
--------	---------------------	---	---	-----

Part Number	Size	Std Pk	Mstr Ctn	Prod Code
-------------	------	--------	----------	-----------

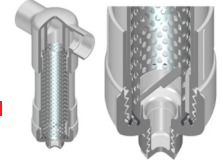
**Irrigation Tee Filter - 100 GPM PVC White (continued)**

**Buna-N O-ring Seal with Stainless Steel Screen**

TF-32*	2-1/2 /3 x 2-1/2 /3	1	0	020
TF-50	2-1/2 /3 x 2-1/2 /3	1	0	020
TF-76	2-1/2 /3 x 2-1/2 /3	1	0	020
TF-100	2-1/2 /3 x 2-1/2 /3	1	0	020
TF-150	2-1/2 /3 x 2-1/2 /3	1	0	020
TF-200	2-1/2 /3 x 2-1/2 /3	1	0	020

**Irrigation Tee Filter - 50 GPM PVC White**

**Buna-N O-ring Seal with Stainless Steel Screen**



MTF-16*	2-1/2 /3 x 2-1/2 /3	1	0	020
MTF-32*	2-1/2 /3 x 2-1/2 /3	1	0	020
MTF-50	2-1/2 /3 x 2-1/2 /3	1	0	020
MTF-76	2-1/2 /3 x 2-1/2 /3	1	0	020
MTF-100	2-1/2 /3 x 2-1/2 /3	1	0	020
MTF-150	2-1/2 /3 x 2-1/2 /3	1	0	020
MTF-200	2-1/2 /3 x 2-1/2 /3	1	0	020

**Irrigation Reverse Flow Tee Filter - 100 GPM PVC White**

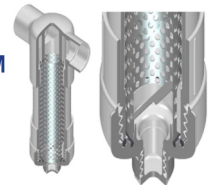
Part Number	Size	Std Pk	Mstr Ctn	Prod Code
-------------	------	--------	----------	-----------

**Buna-N O-ring Seal with Stainless Steel Screen**

TF-16*	2-1/2 /3 x 2-1/2 /3	1	0	020
TF-32*	2-1/2 /3 x 2-1/2 /3	1	0	020
TFR-50	2-1/2 /3 x 2-1/2 /3	1	0	020
TFR-76	2-1/2 /3 x 2-1/2 /3	1	0	020
TFR-100	2-1/2 /3 x 2-1/2 /3	1	0	020
TFR-150	2-1/2 /3 x 2-1/2 /3	1	0	020
TFR-200	2-1/2 /3 x 2-1/2 /3	1	0	020

**Irrigation Reverse Flow Tee Filter - 50 GPM PVC White**

**Buna-N O-ring Seal with Stainless Steel Screen**



MTF-16*	2-1/2 /3 x 2-1/2 /3	1	0	020
MTF-32*	2-1/2 /3 x 2-1/2 /3	1	0	020
MTFR-50	2-1/2 /3 x 2-1/2 /3	1	0	020
MTFR-76	2-1/2 /3 x 2-1/2 /3	1	0	020
MTFR-100	2-1/2 /3 x 2-1/2 /3	1	0	020
MTFR-150	2-1/2 /3 x 2-1/2 /3	1	0	020
MTFR-200	2-1/2 /3 x 2-1/2 /3	1	0	020

\*Standard TF-16, TF-32, MTF-16 & MTF-32 can be utilized as Reverse Flow Filters by reversing installation from current inlet to outlet and current outlet to inlet.

**Suitable for Oil-Free air handling to 25 psi, not for distribution of compressed air or gas**

JJ DOWNS INDUSTRIAL PLASTICS INC.

416.236.1884
Toronto, ON
JJDOWNS.COM



**Irrigation & Turf Product**  
**In-line Tee Style Filters and**  
**Reverse In-line Tee Style Filters & Hose Filters**

**In-line Tee Style Filters and Reverse In-line Tee Style Filters**

Part Number	Size	Std Pk	Mstr Ctn	Prod Code
-------------	------	--------	----------	-----------

**Irrigation Reverse Flow Tee Filter - 100 GPM Replacement Screens for TF Filters (24" Length)**



FL-16-1	1/16" Holes	4	0	020
FL-32-1	1/32" Holes	4	0	020
FL-50-1	50 Mesh	4	0	020
FL-76-1	76 Mesh	4	0	020
FL-100-1	100 Mesh	4	0	020
FL-150-1	150 Mesh	4	0	020
FL-200-1	200 Mesh	4	0	020

NOTE: When ordering replacement screens for TF and MTF Series Filters, please provide exact length of old screen within 1/64" to insure proper fit of new screen in your filter body.

**Irrigation Reverse Flow Tee Filter - 50 GPM Filter Replacement Screens for MTF Filters (12" Length)**



MFL-16-1	1/16" Holes	4	0	020
MFL-32-1	1/32" Holes	4	0	020
MFL-50-1	50 Mesh	4	0	020
MFL-76-1	76 Mesh	4	0	020
MFL-100-1	100 Mesh	4	0	020
MFL-150-1	150 Mesh	4	0	020
MFL-200-1	200 Mesh	4	0	020

NOTE: When ordering replacement screens for TF and MTF Series Filters, please provide exact length of old screen within 1/64" to insure proper fit of new screen in your filter body.

**Irrigation Reverse Flow Tee Filter - 100 GPM Replacement Screens for TFR Filters(24" Length)**



FL-16-1	1/16" Holes	4	0	020
FL-32-1	1/32" Holes	4	0	020
FLR-50-1	50 Mesh	4	0	020
FLR-76-1	76 Mesh	4	0	020
FLR-100-1	100 Mesh	4	0	020
FLR-150-1	150 Mesh	4	0	020
FLR-200-1	200 Mesh	4	0	020

**Irrigation Reverse Flow Tee Filter - 50 GPM Replacement Screens for MTFR Filters (12" Length)**



MFL-16-1	1/16" Holes	4	0	020
MFL-32-1	1/32" Holes	4	0	020
MFLR-50-1	50 Mesh	4	0	020
MFLR-76-1	76 Mesh	4	0	020
MFLR-100-1	100 Mesh	4	0	020
MFLR-150-1	150 Mesh	4	0	020
MFLR-200-1	200 Mesh	4	0	020

**Suitable for Oil-Free air handling to 25 psi, not for distribution of compressed air or gas**

Part Number	Size	Std Pk	Mstr Ctn	Prod Code
-------------	------	--------	----------	-----------

**Irrigation Reverse Flow Tee Filter - 50 GPM Replacement Screens for MTFR Filters (12" Length) (continued)**

**Hose Filters**



7 GPM Steel



7 GPM Plastic/Nylon

NOTE: It is recommended to connect the inlet of the Hose Filter to the system with a swivel adapter such as Spears® AP Series, to facilitate servicing of the filter element (refer to Hose Fittings).

**Hose Filters**

Mesh Size	Hole Size (in.)	Part Number Extension
20 Mesh	.0331	-20
30 Mesh	.0232	-30
50 Mesh	.0117	-50
80 Mesh	.0070	-80
100 Mesh	.0059	-100
150 Mesh	.0041	-150
200 Mesh	.0029	-200

Additional Mesh Sizes available on request.  
 Example: HF-50 = 50 Mesh

**Hose Filter Assembly with Stainless Steel Screen - 7 GPM**

**with Stainless Steel Screen**



HF-20	3/4	10	60	020
HF-30	3/4	10	60	020
HF-50	3/4	10	60	020
HF-80	3/4	10	60	020
HF-100	3/4	10	60	020
HF-150	3/4	10	60	020
HF-200	3/4	10	60	020

**Hose Filter Assembly with Plastic Nylon Screen - 7 GPM**

**with Plastic/Nylon Screen**



HF-150N	3/4	10	60	020
---------	-----	----	----	-----

JJ DOWNS INDUSTRIAL PLASTICS INC.

416.236.1884
Toronto, ON
JJDOWNS.COM



Irrigation & Turf Product  
**Hose Filters**

**Hose Filters**

**Hose Filter Stainless Steel Replacement Screen**

Part Number	Size	Std Pk	Mstr Ctn	Prod Code
<b>Stainless Steel Screen</b>				
HF-20-1W	5	25	150	020
HF-30-1W	5	25	150	020
HF-50-1W	5	25	150	020
HF-80-1W	5	25	150	020
HF-100-1W	5	25	150	020
HF-150-1W	5	25	150	020
HF-200-1W	5	25	150	020

**Hose Filter Plastic Nylon Replacement Screen**

Part Number	Size	Std Pk	Mstr Ctn	Prod Code
<b>Plastic/Nylon Screen</b>				
HF-150-1NW	4-3/4	25	150	020

**Hose Filter Body without Screen - 7 GPM**

**Hose Filter Body w/o screen**



HF	3/4	10	60	020
----	-----	----	----	-----

**Hose Filter Hose Washer- 7 GPM**

**Hose Washer**



W-100	3/4	50	1500	020
-------	-----	----	------	-----

**Hose Filter Screen Washer- 7 GPM**

**Screen Washer**



S-W	- - -	600	0	891
-----	-------	-----	---	-----

Suitable for Oil-Free air handling to 25 psi, not for distribution of compressed air or gas

	 <small>member iapd international association of plastics distribution</small>	
JJ DOWNS INDUSTRIAL PLASTICS INC.		
416.236.1884	Toronto, ON	JJDOWNNS.COM