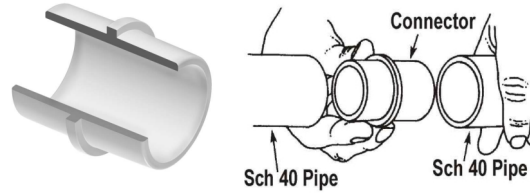
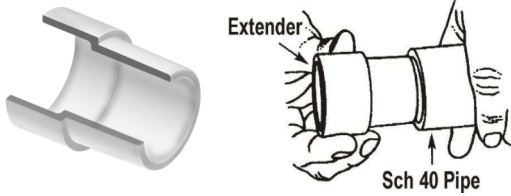




Schedule 40 Fittings Product
Schedule 40 Repair Fittings & Fabricated Repair Couplings

Schedule 40 Repair Fittings

Schedule 40 Pipe Repair Fittings
 Allows Difficult Broken Pipe Repair To Be Made Easily



Pipe Inside Connectors, Schedule 40

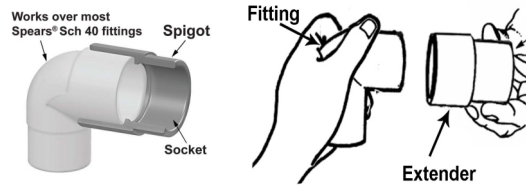
Part Number	Size	Std Pk	Mstr Ctn	Prod Code
Pipe I.D. Spigot x Pipe I.D. Spigot				
S0302-10	1	50	300	894
S0302-15	1-1/2	50	0	894
S0302-20	2	20	0	894
S0302-30	3	25	0	894
S0302-40	4	5	0	894

Pipe Extenders, Schedule 40

Part Number	Size	Std Pk	Mstr Ctn	Prod Code
-------------	------	--------	----------	-----------

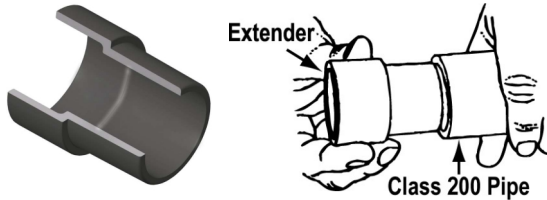
Pipe O.D. Spigot x Pipe I.D. Spigot
 * Fabricated, Non-Pressure Rated

S0301-05	1/2	100	600	894
S0301-07	3/4	50	300	894
S0301-10	1	50	200	894
S0301-12	1-1/4	50	0	894
S0301-15	1-1/2	50	0	894
S0301-20	2	25	0	894
S0301-25	2-1/2	25	0	894
S0301-30	3	25	0	894
S0301-40	4	20	0	894
S0301-60F	6	10	0	392
S0301-80F	8	1	2	392
S0301-100F	10	1	0	392
S0301-120F	12	1	0	392



Fitting Extenders, Schedule 40

Part Number	Size	Std Pk	Mstr Ctn	Prod Code
Spigot (Socket) x Socket O.D.				
Spigot End also functions as next size down Socket				
S0303-15	1-1/2	25	0	894
S0303-20	2	25	0	894



Pipe Extenders, Class 200

Part Number	Size	Std Pk	Mstr Ctn	Prod Code
-------------	------	--------	----------	-----------

Pipe O.D. Spigot x Pipe I.D. Spigot
 Fits Class 200 Pipe I.D.

S0304-10	1	25	150	894
S0304-12	1-1/4	10	120	894
S0304-15	1-1/2	10	120	894
S0304-20	2	25	0	894

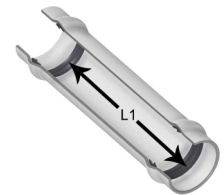
Fabricated Repair Couplings

Part Number	Size	Gasket to Gasket - L1	Std Pk	Mstr Ctn	Prod Code
-------------	------	-----------------------	--------	----------	-----------

Repair Coupling, Schedule 40 Fabricated

Gasket x Gasket

428-020F	2	6	1	10	047
428-030F	3	11- 3/4	1	12	047
428-040F	4	15	1	4	047
428-060F	6	18-1/4	1	3	047
428-080F	8	21-1/2	1	2	047
428-100F	10	22-1/8	1	0	047
428-120F	12	22-5/8	1	0	047
428-140F	14	21-1/2	1	0	047
428-160F	16	24	1	0	047
428-180F	18	22-5/8	1	0	047
428-200F	20	23-1/2	1	0	047
428-240F	24	23-1/2	1	0	047



Suitable for Oil-Free air handling to 25 psi, not for distribution of compressed air or gas

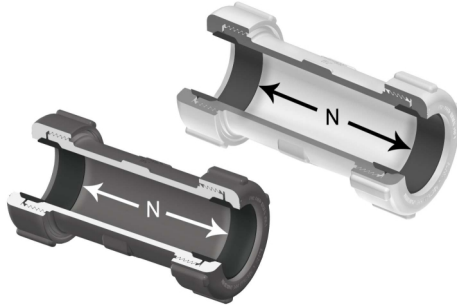
JJ DOWNS INDUSTRIAL PLASTICS INC.

416.236.1884
Toronto, ON
JJDOWNS.COM



Schedule 40 Fittings Product
Compression Couplings & Nut Wrenches

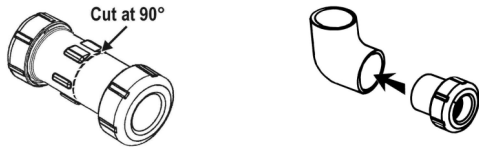
Compression Couplings & Nut Wrenches



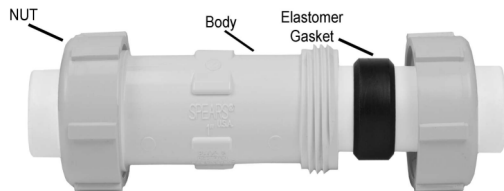
- Designed for Quick Connections, System Modifications or Repairs
- Completely Redesigned for Improved Versatility
- PVC White plus New Industrial PVC Gray
- Easy-Thread Compression Nut
- New Spigot Conversion Capability
- Full Service Pressure Rating
 1/2" - 2-1/2" = 200psi, 3" - 6" = 150psi
- NSF® Certified for Potable Water Use

Option: Convert Fittings to Compression Outlet

Socket-type fittings 3/4" through 3" can be easily converted to compression outlet sizes 1/2" through 2-1/2" by simply cutting the Compression Coupling at the center holding ribs and solvent welding the spigot body into a fitting socket.



Compression Coupling Size (in.)	Body Spigot Size (in.)
1/2	3/4
3/4	1
1	1-1/4
1-1/4	1-1/2
1-1/2	2
2	2-1/2
2-1/2	3



Compression Coupling, PVC White

Part Number	Size	Gasket to Gasket - N	Std Pk	Mstr Ctn	Prod Code
Elastomer Gasket					
S110-05	1/2	3-3/8	28	0	024
S110-07	3/4	3-9/16	24	0	024
S110-10	1	3-3/4	20	0	024
S110-12	1-1/4	4-3/32	10	0	024
S110-15	1-1/2	4-21/32	16	0	024
S110-20	2	5-3/32	12	0	024
S110-25	2-1/2	5-7/8	6	0	024
S110-30	3	6-3/16	4	0	024
S110-40	4	7-3/4	4	0	024
S110-60	6	7-7/8	1	0	024

Compression Coupling, PVC Gray

Part Number	Size	Gasket to Gasket - N	Std Pk	Mstr Ctn	Prod Code
Elastomer Gasket					
S110-05G	1/2	3-3/8	28	0	024
S110-07G	3/4	3-9/16	24	0	024
S110-10G	1	3-3/4	20	0	024
S110-12G	1-1/4	4-3/32	10	0	024
S110-15G	1-1/2	4-21/32	16	0	024
S110-20G	2	5-3/32	12	0	024
S110-25G	2-1/2	5-7/8	6	0	024
S110-30G	3	6-3/16	4	0	024
S110-40G	4	7-3/4	4	0	024
S110-60G	6	7-7/8	1	0	024

Compression Coupling Nut Wrench Set

Part Number	Size	Std Pk	Mstr Ctn	Prod Code
Fits all Spears® Compression Fittings				
CCW-000	Set	1	25	299
Complete Set of Wrenches, Sizes 1/2 - 3				

Compression Coupling Nut Wrenches

Fits all Spears® Compression Fittings



CCW-005	1/2	1	50	299
CCW-007	3/4	1	50	299
CCW-010	1	1	50	299
CCW-012	1-1/4	1	50	299
CCW-015	1-1/2	1	50	299
CCW-020 ¹	2	1	50	299
CCW-030 ²	3	1	25	299
CCW-060	6	8	0	299

¹ CCW-20 - Wrench also fits 2-1/2" Coupling Body
² CCW-30 - Wrench also fits 4" Coupling Body

Suitable for Oil-Free air handling to 25 psi, not for distribution of compressed air or gas

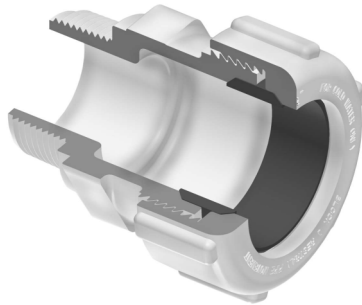
JJ DOWNS INDUSTRIAL PLASTICS INC.

416.236.1884
Toronto, ON
JJDOWNS.COM



Schedule 40 Fittings Product
Compression Male Adapters & Repair Couplings

Compression Male Adapters



- Quickly Adapts Pipe to MIPT Thread
- Easy-Thread Compression Nut
- 200 psi Pressure Rating
- NSF® Certified for Potable Water Use

Uses same Nut Wrench sets available for Compression Couplings

Compression Male Adapters, PVC

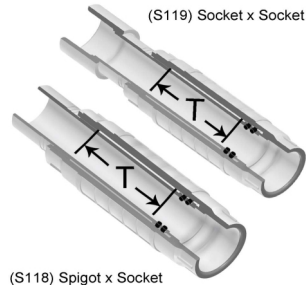
Part Number	Size	Std Pk	Mstr Ctn	Prod Code
-------------	------	--------	----------	-----------

Elastomer Gasket

Uses Regular Compression Coupling Nut Wrenches

S130-05	1/2	25	150	024
S130-07	3/4	25	200	024
S130-10	1	25	0	024
S130-12	1-1/4	25	0	024
S130-15	1-1/2	25	0	024
S130-20	2	25	0	024

Repair Couplings



- Multi-function Telescoping Design
- Regular and Short configurations
- Socket x Socket Configuration for Pipe Repair or Use as a Short-Stroke Expansion Joint
- Spigot x Socket Configuration for Replacing Damaged Fittings
- Both Configurations can be Easily Modified for Opposite Use
- Double O-ring Seal in EPDM
- 1/2" - 2" Pressure Rated to 235 PSI @ 73°F (23°C)
- 2-1/2" - 4" Pressure Rated to 200 PSI @ 73°F (23°C)
- 6" Pressure Rated to 150 PSI @ 73°F (23°C)
- NSF® Certified for Potable Water Use

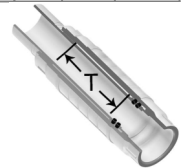
Versatile Repair Capability

Spears® Repair Couplings provide a variety of system repair and alteration solutions. Use Socket x Socket configurations for quick pipe damage repair - can also be used as a short-stroke expansion joint to compensate for thermal expansion & contraction. Spigot x Socket configurations are excellent for lateral and riser add-ons, damaged fitting replacement, or for installing valves in existing piping systems. Order the wrong configuration? Simply cut coupling from Socket shaft end to function as a spigot or add a coupling to Spigot shaft end for Socket connections.

Part Number	Size	Travel - T	Std Pk	Mstr Ctn	Prod Code
-------------	------	------------	--------	----------	-----------

Repair Coupling - Spigot x Socket

PVC White with EPDM O-ring



Can be used as short-stroke Expansion Joint

S118-05	1/2	2-7/8	25	0	025
S118-07	3/4	4	30	0	025
S118-10	1	4-1/16	15	0	025
S118-12	1-1/4	4-1/16	25	0	025
S118-15	1-1/2	3-13/16	25	0	025
S118-20	2	4-5/16	12	0	025
S118-25	2-1/2	5-9/16	5	0	025
S118-30	3	5-9/16	4	0	025
S118-40	4	6-3/16	2	0	025

Suitable for Oil-Free air handling to 25 psi, not for distribution of compressed air or gas

JJ DOWNS INDUSTRIAL PLASTICS INC.

416.236.1884
Toronto, ON
JJDOWNS.COM



Schedule 40 Fittings Product
**Short Repair Couplings & GripLoc™ Compression Couplings
 & GripLoc™ Compression Adapters**

Repair Couplings

Part Number	Size	Travel - T	Std Pk	Mstr Ctn	Prod Code
Repair Coupling - Spigot x Socket (continued)					
PVC White with EPDM O-ring					
S118-60	6	6-5/8	1	0	025
Unit Must Be Thrust Blocked T = Repair Coupling Travel					



Repair Coupling - Socket x Socket

PVC White with EPDM O-ring

Can be used as short-stroke Expansion Joint

S119-05	1/2	2-7/8	30	0	025
S119-07	3/4	4	24	0	025
S119-10	1	4-1/16	20	0	025
S119-12	1-1/4	4-1/16	10	0	025
S119-15	1-1/2	3-13/16	16	0	025
S119-20	2	4-5/16	10	0	025
S119-25	2-1/2	5-9/16	5	0	025
S119-30	3	5-9/16	4	0	025
S119-40	4	6-3/16	2	0	025
S119-60	6	6-5/8	1	0	025
Unit Must Be Thrust Blocked T = Repair Coupling Travel					

Short Repair Couplings

Repair Coupling - Short, Spigot x Socket

PVC White with EPDM O-ring

SH118-05	1/2	1-15/16	36	0	025
SH118-07	3/4	2-3/16	30	0	025
SH118-10	1	2	35	0	025
SH118-12	1-1/4	2-1/2	25	0	025
SH118-15	1-1/2	2-1/2	32	0	025
SH118-20	2	3	15	0	025
Unit Must Be Thrust Blocked T = Repair Coupling Travel					



Repair Coupling - Short, Socket x Socket

PVC White with EPDM O-ring

SH119-05	1/2	1-15/16	40	0	025
SH119-07	3/4	2-3/16	30	0	025
SH119-10	1	2	30	0	025
SH119-12	1-1/4	2-1/2	20	0	025
SH119-15	1-1/2	2-1/2	21	0	025
SH119-20	2	3	12	0	025



Part Number	Size	Travel - T	Std Pk	Mstr Ctn	Prod Code
-------------	------	------------	--------	----------	-----------

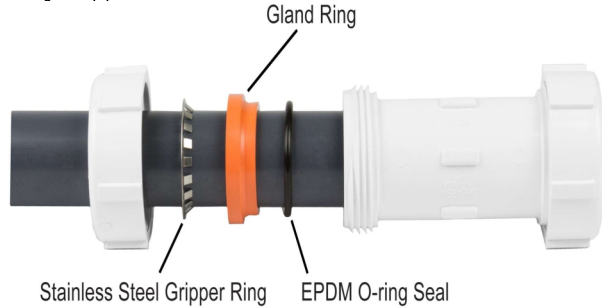
Repair Coupling - Short, Socket x Socket (continued)

PVC White with EPDM O-ring

Unit Must Be Thrust Blocked
T = Repair Coupling Travel

GripLoc™ Compression Couplings

Tightening nut compresses special stainless steel Gripper Ring to firmly grip pipe and prevent potential pull-out. Compressed Gland Ring ensures positive O-ring seal against pipe.



Part Number	Size	Std Pk	Mstr Ctn	Prod Code
-------------	------	--------	----------	-----------

GripLoc™ Compression Couplings

WARNING: DO NOT INSERT FINGERS
For Cold Water Only - EPDM Gasket
 1/2" - 2" Pressure Rated to 235 psi
 3" - 4" Pressure Rated to 150 psi



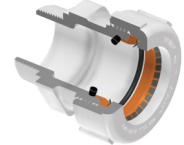
Hand Tighten ONLY - No Nut Wrenches Required

S112-05	1/2	28	0	131
S112-07	3/4	1	24	131
S112-10	1	1	20	131
S112-12	1-1/4	1	10	131
S112-15	1-1/2	1	16	131
S112-20	2	1	12	131
S112-30	3	1	4	131
S112-40	4	1	4	131

GripLoc™ Compression Adapters

GripLoc™ Compression Male Adapter

WARNING: DO NOT INSERT FINGERS
For Cold Water Only - Mipt x EPDM
GripLoc™ Gasket



Hand Tighten ONLY - No Nut Wrenches Required

S135-05	1/2	1	25	131
S135-07	3/4	1	25	131
S135-10	1	1	25	131

Suitable for Oil-Free air handling to 25 psi, not for distribution of compressed air or gas

JJ DOWNS INDUSTRIAL PLASTICS INC.

416.236.1884
Toronto, ON
JJDOWNS.COM



Schedule 40 Fittings Product
GripLoc™ Compression Adapters & GripLoc™ Coupling & GripLoc™ Cap

GripLoc™ Compression Adapters

Part Number	Size	Std Pk	Mstr Ctn	Prod Code
GripLoc™ Compression Male Adapter (continued)				
WARNING: DO NOT INSERT FINGERS				
For Cold Water Only - Mipt x EPDM GripLoc™ Gasket				
S135-12	1-1/4	1	20	131
S135-15	1-1/2	1	25	131
S135-20	2	1	25	131

GripLoc™ Compression Female Adapter

WARNING: DO NOT INSERT FINGERS
For Cold Water Only - Fipt x EPDM GripLoc™ Gasket



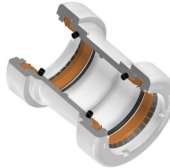
Hand Tighten ONLY - No Nut Wrenches Required

S136-05	1/2	1	28	131
S136-07	3/4	1	24	131
S136-10	1	1	20	131
S136-12	1-1/4	1	20	131
S136-15	1-1/2	1	16	131
S136-20	2	1	10	131

GripLoc™ Coupling

GripLoc™ Coupling

WARNING: DO NOT INSERT FINGERS
For Cold Water Only - EPDM Gasket
Pressure Rated to 235 psi @ 73°F



Uses No Solvent Cement

GL429-005	1/2	1	25	131
GL429-007	3/4	1	36	131
GL429-010	1	1	20	131
GL429-012	1-1/4	1	15	131
GL429-015	1-1/2	1	15	131
GL429-020	2	1	10	131

GripLoc™ IPS Size Release Tool

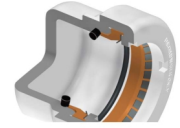
For Removal of GripLoc™ Fittings



GLIPSRT-005	1/2	1	50	299
GLIPSRT-007	3/4	1	50	299
GLIPSRT-010	1	1	50	299

GripLoc™ Cap

Part Number	Size	Std Pk	Mstr Ctn	Prod Code
GripLoc™ Cap				
WARNING: DO NOT INSERT FINGERS				
For Cold Water Only - EPDM Gasket				
Pressure Rated to 235 psi @ 73°F				



Uses No Solvent Cement

GL447-005	1/2	1	50	131
GL447-007	3/4	10	50	131
GL447-010	1	1	50	131
GL447-012	1-1/4	1	25	131
GL447-015	1-1/2	1	25	131
GL447-020	2	1	25	131

Suitable for Oil-Free air handling to 25 psi, not for distribution of compressed air or gas

JJ DOWNS INDUSTRIAL PLASTICS INC.

416.236.1884
Toronto, ON
JJDOWNS.COM