



CTS CPVC Product  
**EverTUFF® CPVC CTS Products**

**PRODUCT INFORMATION**

<p style="text-align: center;"><b>APPLICATION</b></p> <p>Spears® Copper Tube Size (CTS) fittings are manufactured from chlorinated polyvinyl chloride (CPVC) for use with SDR-11 piping systems of CTS outside diameter in hot and cold water distribution systems. Check state and local codes for application and restrictions.</p> <p style="text-align: center;"><b>CONFORMANCE STANDARDS</b></p> <p>Spears® CPVC CTS fittings conform to ASTM D 2846 Specification for Chlorinated Poly (Vinyl Chloride) (CPVC) Plastic Hot and Cold Water Distribution Systems.</p> <p style="text-align: center;"><b>WORKING PRESSURE</b></p> <p>Spears® CPVC CTS fittings have a continuous working pressure rating of 100 psi at 180°F (82°C) [400 psi at 73°F (23°C)].</p>	<p style="text-align: center;"><b>PRODUCT CERTIFICATION</b></p> <p>Spears® CPVC CTS fittings and Special Reinforced (SR) Thread transition adapters are tested and certified by the National Sanitation Foundation (NSF®) to ASTM D 2846 for use in Hot and Cold Water Distribution Systems, and for safe use in potable water systems under NSF® Standard 14/61.</p> <p style="text-align: center;"><b>TESTING</b></p> <p>Once the system has been installed and allowed to cure properly, the system shall be tested in accordance with applicable code requirements. When testing with water (hydrostatic testing), the system must be slowly filled with water and the air bled from the highest and furthest points in the system before test pressure is applied. Failure to do so can cause damage to the piping system and could be harmful to the job site personnel should a failure occur. If a leak is found, the affected product must be cut out and discarded. A new section can be installed using couplings or other approved means.</p>
--	---

Part Number	Size	Std Pk	Mstr Ctn	Prod Code
-------------	------	--------	----------	-----------

**Tee**

**Socket x Socket x Socket**



NSF® Certified Lead Free

4101-005	1/2	100	500	035
4101-007	3/4	50	250	035
4101-010	1	10	100	035
4101-012	1-1/4	10	100	035
4101-015	1-1/2	5	50	035
4101-020	2	5	25	035

**Tee - Reducing**

**Socket x Socket x Socket**



NSF® Certified Lead Free

4101-074	1/2X1/2X3/4	10	100	035
4101-094	3/4X1/2X1/2	50	250	035
4101-095	3/4X1/2X3/4	25	250	035
4101-101	3/4X3/4X1/2	50	250	035
4101-102 <sup>1</sup>	3/4X3/4X1	10	100	035
4101-120 <sup>1</sup>	1X1/2X1/2	10	100	035
4101-121 <sup>1</sup>	1X1/2X3/4	10	100	035
4101-122 <sup>1</sup>	1X1/2X1	10	100	035
4101-124 <sup>1</sup>	1X3/4X1/2	10	100	035
4101-125	1X3/4X3/4	10	100	035
4101-126 <sup>1</sup>	1X3/4X1	10	100	035
4101-130	1X1X1/2	10	100	035
4101-131	1X1X3/4	10	100	035
4101-138 <sup>1</sup>	1-1/4X1/2X1/2	10	80	035
4101-139 <sup>1</sup>	1-1/4X1/2X3/4	10	80	035

Part Number	Size	Std Pk	Mstr Ctn	Prod Code
-------------	------	--------	----------	-----------

**Tee - Reducing (continued)**

**Socket x Socket x Socket**

4101-142 <sup>1</sup>	1-1/4X1/2X1-1/4	10	80	035
4101-146 <sup>1</sup>	1-1/4X3/4X1/2	10	80	035
4101-147 <sup>1</sup>	1-1/4X3/4X3/4	10	80	035
4101-148 <sup>1</sup>	1-1/4X3/4X1	10	80	035
4101-149 <sup>1</sup>	1-1/4X3/4X1-1/4	10	80	035
4101-156 <sup>1</sup>	1-1/4X1X1/2	10	80	035
4101-157 <sup>1</sup>	1-1/4X1X3/4	10	80	035
4101-158 <sup>1</sup>	1-1/4X1X1	10	100	035
4101-159 <sup>1</sup>	1-1/4X1X1-1/4	10	80	035
4101-166	1-1/4X1-1/4X1/2	10	100	035
4101-168	1-1/4X1-1/4X1	10	100	035
4101-167	1-1/4X1-1/4X3/4	10	100	035
4101-169 <sup>1</sup>	1-1/4X1-1/4X1-1/2	5	40	035
4101-173 <sup>1</sup>	1-1/2X1/2X1/2	5	40	035
4101-174 <sup>1</sup>	1-1/2X1/2X3/4	5	40	035
4101-175 <sup>1</sup>	1-1/2X1/2X1	5	40	035
4101-176 <sup>1</sup>	1-1/2X1/2X1-1/4	5	40	035
4101-177 <sup>1</sup>	1-1/2X1/2X1-1/2	5	40	035
4101-182 <sup>1</sup>	1-1/2X3/4X1/2	5	40	035
4101-184 <sup>1</sup>	1-1/2X3/4X3/4	5	40	035
4101-185 <sup>1</sup>	1-1/2X3/4X1	5	40	035
4101-186 <sup>1</sup>	1-1/2X3/4X1-1/4	5	40	035
4101-188 <sup>1</sup>	1-1/2X3/4X1-1/2	5	40	035
4101-193 <sup>1</sup>	1-1/2X1X1/2	5	40	035
4101-194 <sup>1</sup>	1-1/2X1X3/4	5	40	035
4101-195 <sup>1</sup>	1-1/2X1X1	10	100	035
4101-196 <sup>1</sup>	1-1/2X1X1-1/4	5	40	035
4101-197 <sup>1</sup>	1-1/2X1X1-1/2	5	40	035
4101-199 <sup>1</sup>	1-1/2X1-1/4X1/2	5	40	035
4101-201 <sup>1</sup>	1-1/2X1-1/4X3/4	5	40	035
4101-202 <sup>1</sup>	1-1/2X1-1/4X1	5	40	035

**Suitable for Oil-Free air handling to 25 psi, not for distribution of compressed air or gas**

		<p>member  <b>iapd</b>  <small>international association  of plastics distribution</small></p>
<p>JJ DOWNS INDUSTRIAL PLASTICS INC.</p>		
<p>416.236.1884</p>	<p>Toronto, ON</p>	<p>JJDOWNS.COM</p>



**CTS CPVC Product**  
**EverTUFF® CPVC CTS Products**

Part Number	Size	Std Pk	Mstr Ctn	Prod Code
<b>Tee - Reducing (continued)</b>				
<b>Socket x Socket x Socket</b>				
4101-203 <sup>1</sup>	1-1/2X1-1/4X1-1/4	5	40	035
4101-204 <sup>1</sup>	1-1/2X1-1/4X1-1/2	5	40	035
4101-209	1-1/2X1-1/2X1/2	10	50	035
4101-210	1-1/2X1-1/2X3/4	10	100	035
4101-211	1-1/2X1-1/2X1	5	50	035
4101-212 <sup>1</sup>	1-1/2X1-1/2X1-1/4	5	50	035
4101-213 <sup>1</sup>	1-1/2X1-1/2X2	5	0	035
4101-216 <sup>1</sup>	2X1/2X1/2	5	0	035
4101-217 <sup>1</sup>	2X1/2X3/4	5	0	035
4101-218 <sup>1</sup>	2X1/2X1	5	0	035
4101-219 <sup>1</sup>	2X1/2X1-1/4	5	0	035
4101-220 <sup>1</sup>	2X1/2X1-1/2	5	0	035
4101-221 <sup>1</sup>	2X1/2X2	5	0	035
4101-222 <sup>1</sup>	2X3/4X1/2	5	0	035
4101-223 <sup>1</sup>	2X3/4X3/4	5	0	035
4101-224 <sup>1</sup>	2X3/4X1	5	0	035
4101-225 <sup>1</sup>	2X3/4X1-1/4	5	0	035
4101-226 <sup>1</sup>	2X3/4X1-1/2	5	0	035
4101-227 <sup>1</sup>	2X3/4X2	5	0	035
4101-228 <sup>1</sup>	2X1X1/2	5	0	035
4101-229 <sup>1</sup>	2X1X3/4	5	0	035
4101-230 <sup>1</sup>	2X1X1	5	0	035
4101-231 <sup>1</sup>	2X1X1-1/4	5	0	035
4101-232 <sup>1</sup>	2X1X1-1/2	5	0	035
4101-233 <sup>1</sup>	2X1X2	5	0	035
4101-234 <sup>1</sup>	2X1-1/4X1/2	5	0	035
4101-235 <sup>1</sup>	2X1-1/4X3/4	5	0	035
4101-236 <sup>1</sup>	2X1-1/4X1	5	0	035
4101-237 <sup>1</sup>	2X1-1/2X1/2	5	0	035
4101-238 <sup>1</sup>	2X1-1/2X3/4	5	0	035
4101-239 <sup>1</sup>	2X1-1/2X1	5	0	035
4101-240 <sup>1</sup>	2X1-1/2X1-1/4	5	0	035
4101-241 <sup>1</sup>	2X1-1/2X1-1/2	5	0	035
4101-242 <sup>1</sup>	2X1-1/4X1-1/4	5	0	035
4101-243 <sup>1</sup>	2X1-1/4X1-1/2	5	0	035
4101-244 <sup>1</sup>	2X1-1/4X2	5	0	035
4101-247	2X2X1/2	10	30	035
4101-248	2X2X3/4	5	25	035
4101-249	2X2X1	5	25	035
4101-250 <sup>1</sup>	2X2X1-1/4	25	0	035
4101-251	2X2X1-1/2	5	25	035
4101-257 <sup>1</sup>	2X1-1/2X2	5	0	035

<sup>1</sup> Outlet sized with bushing.

**Drop Ear Tee - CPVC Fitting with Bracket**

**Socket x Socket x Socket**



NSF® Certified Lead Free

DE4101-005	1/2	25	150	035
------------	-----	----	-----	-----

Part Number	Size	Std Pk	Mstr Ctn	Prod Code
-------------	------	--------	----------	-----------

**90° Ell**

**Socket x Socket**



NSF® Certified Lead Free

4106-005	1/2	100	1000	035
4106-007	3/4	50	500	035
4106-010	1	10	100	035
4106-012	1-1/4	10	100	035
4106-015	1-1/2	10	100	035
4106-020	2	5	100	035

**90° Ell - Reducing**

**Socket x Socket**



NSF® Certified Lead Free

4106-101	3/4X1/2	50	250	035
4106-130 <sup>1</sup>	1X1/2	25	200	035
4106-131 <sup>1</sup>	1X3/4	25	200	035
4106-167 <sup>1</sup>	1-1/4X3/4	10	80	035
4106-168 <sup>1</sup>	1-1/4X1	10	80	035
4106-209 <sup>1</sup>	1-1/2X1/2	10	0	035
4106-210 <sup>1</sup>	1-1/2X3/4	10	0	035
4106-211 <sup>1</sup>	1-1/2X1	10	0	035
4106-212 <sup>1</sup>	1-1/2X1-1/4	10	0	035
4106-247 <sup>1</sup>	2X1/2	5	30	035
4106-248 <sup>1</sup>	2X3/4	5	30	035
4106-249 <sup>1</sup>	2X1	5	30	035
4106-250 <sup>1</sup>	2X1-1/4	5	30	035
4106-251 <sup>1</sup>	2X1-1/2	5	30	035

<sup>1</sup> Outlet sized with bushing.

**90° Ell - Special Reinforced**

**Socket x SR Fipt - Stainless Steel Collar**



NSF® Certified Lead Free

4107-005SR	1/2	50	300	035
------------	-----	----	-----	-----

**Drop Ear 90° Ell - CPVC Zinc Reinforced (One Piece Unit)**

**Socket x SR Fipt - Zinc Collar**



NSF® Certified Lead Free

DEZ4107-005SR	1/2	10	150	035
---------------	-----	----	-----	-----

**Drop Ear 90° Ell - CPVC Fitting with Bracket**

**Socket x Socket**



NSF® Certified Lead Free

DE4106-005	1/2	25	150	035
------------	-----	----	-----	-----

Suitable for Oil-Free air handling to 25 psi, not for distribution of compressed air or gas

JJ DOWNS INDUSTRIAL PLASTICS INC.

416.236.1884      Toronto, ON      JJ DOWNS.COM



CTS CPVC Product  
**EverTUFF® CPVC CTS Products**

Part Number	Size	Std Pk	Mstr Ctn	Prod Code
-------------	------	-----------	-------------	--------------

**Drop Ear 90° EII - Special Reinforced CPVC Fitting with Bracket**



**Socket x SR Fipt - Stainless Steel Collar**

NSF® Certified Lead Free

DE4107-005SR	1/2	10	200	035
--------------	-----	----	-----	-----

**Drop Ear Tee & EII Bracket ONLY**



**For 4101-005 and 4106-005**

DES-005	1/2	1	800	035
---------	-----	---	-----	-----

**Drop Ear SR EII Bracket ONLY**



**For 4107-005SR**

DET-005	1/2	400	0	035
---------	-----	-----	---	-----

**Drop Ear EII - CPVC One Piece**



**Socket x Socket**

NSF® Certified Lead Free

DE4106-005C	1/2	50	250	035
-------------	-----	----	-----	-----

**Drop Ear EII - CPVC One Piece with Gasket**



**Socket x Fipt**

NSF® Certified Lead Free

DE4107-005CG	1/2	50	250	035
--------------	-----	----	-----	-----

**Drop Ear EII - Stainless Steel Thread**



**Socket x SS Fipt**

NSF® Certified Lead Free

DE4107-005SS	1/2	100	0	036
--------------	-----	-----	---	-----

**Drop Ear EII - Stainless Steel Thread/CPVC Body**



**Socket x SS Fipt**

NSF® Certified Lead Free

DE4107-005CSS	1/2	100	0	036
---------------	-----	-----	---	-----

**90° Street EII**



**Spigot x Socket**

NSF® Certified Lead Free

4109-005	1/2	100	500	035
----------	-----	-----	-----	-----

Part Number	Size	Std Pk	Mstr Ctn	Prod Code
-------------	------	-----------	-------------	--------------

**90° Street EII (continued)**

**Spigot x Socket**

4109-007	3/4	50	250	035
4109-010	1	50	100	035

**90° Stub Out EII (Closed End)**



**Socket x Closed End**

NSF® Certified Lead Free

S4106-005	1/2	50	0	035
-----------	-----	----	---	-----

**90° Stub Out EII (Open End)**



**Socket X Open End**

NSF® Certified Lead Free

S4109-005	1/2	50	0	035
S4109-007	3/4	25	0	035

**45° EII**



**Socket x Socket**

NSF® Certified Lead Free

4117-005	1/2	100	500	035
4117-007	3/4	50	250	035
4117-010	1	10	100	035
4117-012	1-1/4	10	100	035
4117-015	1-1/2	10	100	035
4117-020	2	10	100	035

**45° Street EII**



**Spigot x Socket**

NSF® Certified Lead Free

4127-005	1/2	100	500	035
4127-007	3/4	50	250	035
4127-010	1	50	250	035

**Coupling**



**Socket x Socket**

NSF® Certified Lead Free

4129-005	1/2	100	1000	035
4129-007	3/4	50	500	035
4129-010	1	10	100	035
4129-012	1-1/4	10	100	035
4129-015	1-1/2	10	100	035
4129-020	2	10	50	035

Suitable for Oil-Free air handling to 25 psi, not for distribution of compressed air or gas

JJ DOWNS INDUSTRIAL PLASTICS INC.

416.236.1884
Toronto, ON
JJDOWNS.COM



CTS CPVC Product  
**EverTUFF® CPVC CTS Products**

Part Number	Size	Std Pk	Mstr Ctn	Prod Code
-------------	------	-----------	-------------	--------------

Part Number	Size	Std Pk	Mstr Ctn	Prod Code
-------------	------	-----------	-------------	--------------

**Coupling - Reducer**

**Socket x Socket**

NSF® Certified Lead Free

4129-101	3/4X1/2	50	250	035
4129-130	1X1/2	25	150	035
4129-131	1X3/4	25	150	035
4129-166 <sup>1</sup>	1-1/4X1/2	10	120	035
4129-167 <sup>1</sup>	1-1/4X3/4	10	120	035
4129-168 <sup>1</sup>	1-1/4X1	10	120	035
4129-209 <sup>1</sup>	1-1/2X1/2	10	60	035
4129-210 <sup>1</sup>	1-1/2X3/4	10	60	035
4129-211 <sup>1</sup>	1-1/2X1	10	60	035
4129-212 <sup>1</sup>	1-1/2X1-1/4	10	120	035
4129-247 <sup>1</sup>	2X1/2	10	0	035
4129-248 <sup>1</sup>	2X3/4	10	0	035
4129-249	2X1	10	0	035
4129-250 <sup>1</sup>	2X1-1/4	10	0	035
4129-251 <sup>1</sup>	2X1-1/2	10	0	035

<sup>1</sup> Outlet sized with bushing.

**GripLoc™ Coupling**

**WARNING: DO NOT INSERT FINGERS**  
**Grip Socket x Grip Socket - Uses No Solvent**  
**Cement**

NSF® Certified Lead Free

GL4129-005	1/2	1	75	135
GL4129-007	3/4	1	50	135
GL4129-010	1	12	24	135

Note: The GripLoc™ is water tight, permanent and cannot be removed.

**Female Adapter - with Gasket**

**Socket x Thread**

For Cold Water Service Only - NSF® Certified Lead Free

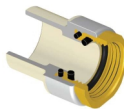
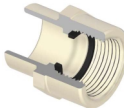
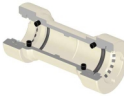
4135-005OR	1/2	100	500	035
4135-007OR	3/4	50	250	035
4135-010OR	1	10	100	035

**Female Adapter - Gasket Sealed Brass Thread Transition**

**Socket x Gasket Fipt - Use NO Thread Sealant**

NSF® Certified Lead Free

4135-005BRG	1/2	25	150	033
4135-007BRG	3/4	25	150	033
4135-010BRG	1	15	90	033
4135-012BRG	1-1/4	15	60	033
4135-015BRG	1-1/2	10	40	033
4135-020BRG	2	8	32	033

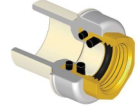


**Female Adapter - Reducing Gasket Sealed Brass Thread Transition**

**Socket x Gasket Fipt - Use NO Thread Sealant**

NSF® Certified Lead Free

4135-101BRG	3/4X1/2	25	150	033
4135-130BRG	1X1/2	50	0	033



**Female Adapter - CPVC Special Reinforced**

**Socket x SR Fipt - Stainless Steel Collar**

NSF® Certified Lead Free

4135-005SR	1/2	25	200	036
4135-007SR	3/4	25	300	036
4135-010SR	1	5	100	036



**Female Adapter - CPVC Reducing Special Reinforced**

**Socket x SR Fipt - Stainless Steel Collar**

NSF® Certified Lead Free

4135-131SR	1X3/4	25	150	036
------------	-------	----	-----	-----



**Female Adapter - Stainless Steel Thread Transition**

**Socket x SS Fipt**

NSF® Certified Lead Free

4135-005SS	1/2	25	150	036
4135-007SS	3/4	25	150	036
4135-010SS	1	25	100	036
4135-012SS	1-1/4	16	0	036
4135-015SS	1-1/2	16	0	036
4135-020SS	2	8	0	036



**Male Adapter**

**Mipt x Socket**

For Cold Water Service Only - NSF® Certified Lead Free

4136-005	1/2	100	1000	035
4136-007	3/4	50	500	035
4136-010	1	10	100	035
4136-012	1-1/4	10	100	035
4136-015	1-1/2	10	100	035
4136-020	2	10	100	035



**Male Adapter - Reducing**

**Mipt x Socket**

For Cold Water Service Only - NSF® Certified Lead Free

4136-074	1/2X3/4	50	250	035
----------	---------	----	-----	-----



Suitable for Oil-Free air handling to 25 psi, not for distribution of compressed air or gas

JJ DOWNS INDUSTRIAL PLASTICS INC.

416.236.1884
Toronto, ON
JJDOWNS.COM



CTS CPVC Product  
**EverTUFF® CPVC CTS Products**

Part Number	Size	Std Pk	Mstr Ctn	Prod Code
<b>Male Adapter - Reducing (continued)</b>				
<b>Mipt x Socket</b>				
4136-101	3/4X1/2	50	250	035

**Male Adapter - Spigot**

**Mipt x Spigot**

For Cold Water Service Only - NSF® Certified Lead Free

4161-005	1/2	50	700	035
----------	-----	----	-----	-----

**Male Adapter - Internal Stainless Steel Reinforced**

**R Mipt x Socket - Stainless Steel Sleeve**

NSF® Certified Lead Free

4136-005R	1/2	25	300	036
4136-007R	3/4	25	300	036
4136-010R	1	10	120	036
4136-012R	1-1/4	20	80	036
4136-015R	1-1/2	10	120	036
4136-020R	2	10	0	036

**Male Adapter - Transition with CPVC Lined Brass Thread**

**Brass Mipt x Socket**

NSF® Certified Lead Free

4136-005BR	1/2	60	240	033
4136-007BR	3/4	40	160	033
4136-010BR	1	10	60	033
4136-012BR	1-1/4	10	60	033
4136-015BR	1-1/2	10	40	033
4136-020BR	2	8	32	033

**Male Adapter - Transition with Stainless Steel Thread**

**Socket x SS Mipt**

NSF® Certified Lead Free

4136-005SS	1/2	25	150	036
4136-007SS	3/4	25	150	036
4136-010SS	1	25	100	036
4136-012SS	1-1/4	16	0	036
4136-015SS	1-1/2	16	0	036
4136-020SS	2	8	0	036

**Reducer Bushing**

**Spigot x Socket**

NSF® Certified Lead Free

4137-101	3/4X1/2	10	500	035
4137-130	1X1/2	10	100	035
4137-131	1X3/4	10	100	035

Made in the U.S.A.

Part Number	Size	Std Pk	Mstr Ctn	Prod Code
<b>Reducer Bushing (continued)</b>				
<b>Spigot x Socket</b>				

4137-166	1-1/4X1/2	10	100	035
4137-167	1-1/4X3/4	10	100	035
4137-168	1-1/4X1	10	100	035
4137-209	1-1/2X1/2	10	100	035
4137-210	1-1/2X3/4	10	100	035
4137-211	1-1/2X1	10	100	035
4137-212	1-1/2X1-1/4	10	100	035
4137-247	2X1/2	10	50	035
4137-248	2X3/4	10	50	035
4137-249	2X1	10	60	035
4137-250	2X1-1/4	10	50	035
4137-251	2X1-1/2	10	100	035

**Transition Bushing**

**IPS Spigot x CTS Socket**

NSF® Certified Lead Free

4140-005	1/2	10	600	035
4140-007	3/4	10	100	035
4140-010	1	10	100	035
4140-012	1-1/4	10	100	035
4140-015	1-1/2	10	100	035
4140-020	2	10	50	035

**Transition Coupling**

**IPS Socket x CTS Socket**

NSF® Certified Lead Free

4141-007	3/4	25	300	035
4141-010	1	10	150	035

**Cap**

**Socket**

NSF® Certified Lead Free

4147-005	1/2	100	500	035
4147-007	3/4	50	250	035
4147-010	1	10	100	035
4147-012	1-1/4	10	100	035
4147-015	1-1/2	10	100	035
4147-020	2	10	50	035

**GripLoc™ Cap**

**WARNING: DO NOT INSERT FINGERS  
Grip Socket - Uses No Solvent Cement**

NSF® Certified Lead Free

GL4147-005	1/2	25	200	135
GL4147-007	3/4	25	150	135
GL4147-010	1	10	50	135

Suitable for Oil-Free air handling to 25 psi, not for distribution of compressed air or gas

JJ DOWNS INDUSTRIAL PLASTICS INC.

416.236.1884
Toronto, ON
JJDOWNS.COM



CTS CPVC Product  
**EverTUFF® CPVC CTS Products**

Part Number	Size	Std Pk	Mstr Ctn	Prod Code
-------------	------	-----------	-------------	--------------

**GripLoc™ Cap (continued)**

**WARNING: DO NOT INSERT FINGERS  
 Grip Socket - Uses No Solvent Cement**

Note: The GripLoc™ is water tight, permanent and cannot be removed.

**Union**

**Socket with EPDM O-ring Seal**



100 psi Maximum Internal Pressure @ 180°F (82°C) -  
 NSF® Certified Lead Free

Part Number	Size	Std Pk	Mstr Ctn	Prod Code
4197-005	1/2	25	150	035
4197-007	3/4	12	48	035
4197-010	1	36	0	035
4197-012	1-1/4	12	48	035
4197-015	1-1/2	12	0	035
4197-020	2	6	36	035

**Union - Special Reinforced**

**Socket x SR Fipt - Stainless Steel Collar**

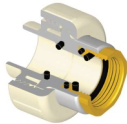


100 psi Maximum Internal Pressure @ 180°F (82°C) -  
 NSF® Certified Lead Free

Part Number	Size	Std Pk	Mstr Ctn	Prod Code
4199-005SR	1/2	20	120	036
4199-007SR	3/4	10	60	036
4199-010SR	1	10	40	036

**Union - Gasket Sealed Brass Thread Transition**

**Socket x Gasket Fipt  
 - Use No Thread Sealant**



100 psi Maximum Internal Pressure @ 180°F (82°C) -  
 NSF® Certified Lead Free

Part Number	Size	Std Pk	Mstr Ctn	Prod Code
4199-005BRG	1/2	20	120	033
4199-007BRG	3/4	10	60	033
4199-010BRG	1	10	40	033

**Transition Compression Adapter**

**Comp w/Gasket x CPVC Spigot**



NSF® Certified Lead Free

Part Number	Size	Std Pk	Mstr Ctn	Prod Code
TCA-005	1/2	25	200	035
TCA-007	3/4	25	100	035

**Transition Union - Brass Compression**

**Brass Comp x CPVC Spigot**



NSF® Certified Lead Free

Part Number	Size	Std Pk	Mstr Ctn	Prod Code
TUC-005	1/2	25	150	036
TUC-007	3/4	75	0	036

Part Number	Size	Std Pk	Mstr Ctn	Prod Code
-------------	------	-----------	-------------	--------------

**Transition Union - Brass Male Thread**

**Brass Mipt x CPVC Spigot**



NSF® Certified Lead Free

Part Number	Size	Std Pk	Mstr Ctn	Prod Code
TUM-005	1/2	150	0	036
TUM-007	3/4	75	0	036

**Transition Union - Brass Female Thread**

**Brass Fipt x CPVC Spigot**



NSF® Certified Lead Free

Part Number	Size	Std Pk	Mstr Ctn	Prod Code
TUF-005	1/2	150	0	036
TUF-007	3/4	75	0	036

**CPVC-PEX Transition Spigot Adapters**

**Spigot x PEX Barb-Crimp Style**



CPVC Spigot is also (Socket)  
 NSF® Certified Lead Free

Part Number	Size	Std Pk	Mstr Ctn	Prod Code
TPC-005	1/2	25	150	036
TPC-007	3/4 (1/2)	25	100	036
TPC-010	1 (3/4)	25	50	036

ASTM F1807 Standard PEX Connector, Stainless Steel

**CPVC-PEX Transition Socket Adapters**

**Socket x PEX Barb-Crimp Style**



CPVC Socket is also (Spigot)  
 NSF® Certified Lead Free

Part Number	Size	Std Pk	Mstr Ctn	Prod Code
TPC-005-S	1/2 (3/4)	25	150	036
TPC-007-S	3/4 (1)	25	100	036
TPC-010-S	1 (1-1/4)	50	300	036

ASTM F1807 Standard PEX Connector, Stainless Steel

**Water Hammer Arrestor**

**Spigot**



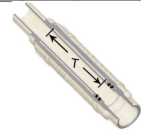
NSF® Certified Lead Free

Part Number	Size	Std Pk	Mstr Ctn	Prod Code
WHA-005	1/2	25	100	035

Part Number	Size	Travel - T	Std Pk	Mstr Ctn	Prod Code
-------------	------	------------	-----------	-------------	--------------

**Expansion Joint/Repair Couplings - Socket x Spigot**

**CPVC With EPDM O-Rings**



NSF Certified Lead Free

CTS118-07	3/4	3-29/32	30	0	027
-----------	-----	---------	----	---	-----

Suitable for Oil-Free air handling to 25 psi, not for distribution of compressed air or gas

JJ DOWNS INDUSTRIAL PLASTICS INC.

416.236.1884
Toronto, ON
JJDOWNS.COM



CTS CPVC Product  
**EverTUFF® CPVC CTS Products**

Part Number	Size	Travel - T	Std Pk	Mstr Ctn	Prod Code
<b>Expansion Joint/Repair Couplings - Socket x Spigot (continued)</b>					
<b>CPVC With EPDM O-Rings</b>					
CTS118-10	1	3-29/32	35	0	027
Unit Must Be Thrust Blocked T = Repair Coupling Travel					



<b>Expansion Joint/Repair Couplings - Socket x Socket</b>					
<b>CPVC With EPDM O-Rings</b>					
NSF® Certified Lead Free					
CTS119-07	3/4	2-17/32	30	0	027
CTS119-10	1	3-29/32	24	0	027
Unit Must Be Thrust Blocked T = Repair Coupling Travel					

Part Number	Size	Std Pk	Mstr Ctn	Prod Code
-------------	------	--------	----------	-----------

**Quarter Turn Angle Supply Stop**

**Socket x NPT**

100 psi @ 180°F (82°C)  
Male Thread for Connection to Flexible Supply Line having 1/2" Female NPT Thread Inlet - NSF® Certified Lead Free

7722-005	1/2	50	400	217
----------	-----	----	-----	-----



**Quarter Turn Angle Supply Stop**

**SR Fipt x NPT**

100 psi @ 180°F (82°C)  
Male Thread for Connection to Flexible Supply Line having 1/2" Female NPT Thread Inlet - NSF® Certified Lead Free

7721-005SR	1/2	50	400	217
------------	-----	----	-----	-----



**Quarter Turn Angle Supply Stop**

**SR Fipt x Comp Thread**

100 psi @ 180°F (82°C)  
Male Thread for Connection to Flexible Supply Line having Female 3/8" Compression Thread Inlet - NSF® Certified Lead Free

7721-073SR	1/2X3/8	50	400	217
------------	---------	----	-----	-----



**Suitable for Oil-Free air handling to 25 psi,  
not for distribution of compressed air or gas**

Part Number	Size	Std Pk	Mstr Ctn	Prod Code
-------------	------	--------	----------	-----------

**Quarter Turn Angle Supply Stop**

**Socket x Comp Thread**

100 psi @ 180°F (82°C)  
Male Thread for Connection to Flexible Supply Line having 1/4", 3/8" or 1/2" Female Compression Thread Inlet - NSF® Certified Lead Free

7722CM-072	1/2X1/4	72	0	217
7722CM-073	1/2X3/8	72	0	217
7722CM-005	1/2	72	0	217



**Quarter Turn Straight Supply Stop**

**Socket x Comp Thread**

100 psi @ 180°F (82°C)  
Male Thread for Connection to Flexible Supply Line having Female 3/8" or 1/2" Compression Thread Inlet - NSF® Certified Lead Free

7422CM-073	1/2X3/8	72	0	217
7422CM-005	1/2	72	0	217



**Quarter Turn Straight Supply Stop**

**Socket x NPT**

100 psi @ 180°F (82°C)  
Male Thread for Connection to Flexible Supply Line having Female 1/2" NPT Thread Inlet - NSF® Certified Lead Free

7422-005	1/2	72	0	217
----------	-----	----	---	-----



**Ball Valve - Commercial CTS**

**Socket with EPDM O-ring Seal**

100 psi Maximum Internal Pressure @ 180°F (82°C)  
NSF® Certified Lead Free

1922-005	1/2	25	200	217
1922-007	3/4	24	0	217
1922-010	1	25	0	217
1922-012	1-1/4	8	0	217
1922-015	1-1/2	6	0	217
1922-020	2	4	0	217



**Ball Valve - Residential CTS**

**Socket x Socket**

100 psi Maximum Internal Pressure @ 180°F (82°C)  
NSF® Certified Lead Free

1922R-005	1/2	72	0	217
1922R-007	3/4	36	0	217
1922R-010	1	24	0	217
1922R-012	1-1/4	8	32	217



international association  
of plastics distribution

JJ DOWNS INDUSTRIAL PLASTICS INC.

416.236.1884
Toronto, ON
JJDOWNS.COM



**CTS CPVC Product**  
**EverTUFF® CPVC CTS Products**

Part Number	Size	Std Pk	Mstr Ctn	Prod Code
<b>Ball Valve - Residential CTS (continued)</b>				
<b>Socket x Socket</b>				
1922R-015	1-1/2	6	0	217
1922R-020	2	4	16	217

**Stop Valve - Red Handle**

**Socket x Socket**



NSF® Certified Lead Free

8422-005	1/2	36	0	217
8422-007	3/4	36	0	217

**Stop Valve - Clear Handle**

**Socket x Socket**



NSF® Certified Lead Free

8422CH-005	1/2	36	0	217
8422CH-007	3/4	36	0	217

**Stop & Waste Valve**

**Socket x Socket**



NSF® Certified Lead Free

8422W-005	1/2	36	0	217
8422W-007	3/4	36	0	217

**Boiler Drain Valve**

**Socket x MHT**



NSF® Certified Lead Free

82MH-005	1/2	36	0	217
82MH-007	3/4	36	0	217

**Pipe - CPVC CTS SDR 11**

**10' Lengths, Priced Per Foot**



NSF® Certified Lead Free

CTS-005	1/2	500	0	034
CTS-007	3/4	250	0	034
CTS-010	1	150	0	034
CTS-012	1-1/4	100	0	034
CTS-015	1-1/2	100	0	034
CTS-020	2	50	0	034

• Pipe sold in bag quantities only - no broken bags • No return on Pipe • Large orders may be shipped directly from Spears® manufacturing facility. Note: Multiple drops may be made on TL shipments. Contact Spears® Regional Distribution Center for requirements and drop-off charges. • See Spears® Manufacturing Company Terms and Conditions of Sale for freight requirements.

Part Number	Size	Std Pk	Mstr Ctn	Prod Code
-------------	------	--------	----------	-----------

**Pipe - CPVC CTS SDR 11**

**20' Lengths, Priced Per Foot**



NSF® Certified Lead Free

CTS-005-20	1/2	1000	0	034
CTS-007-20	3/4	500	0	034
CTS-010-20	1	300	0	034
CTS-012-20	1-1/4	200	0	034
CTS-015-20	1-1/2	200	0	034
CTS-020-20	2	100	0	034

**Pipe - CPVC CTS Coiled SDR 11**

**100 ft. Coil, Priced Per Foot**



NSF® Certified Lead Free

CTS-005-100	1/2	100	0	034
CTS-007-100	3/4	100	0	034
CTS-010-100	1	100	0	034

**CPVC CTS COILED PIPE WEIGHTS:**  
 CTS-005-100 Weight per Foot .090 lbs; per Coil Weight 9 lbs.  
 CTS-007-100 Weight per Foot .149 lbs; per Coil Weight 14.9 lbs.  
 CTS-010-100 Weight per Foot .239 lbs; per Coil Weight 23.9 lbs.  
**WARNING: Banded coils will expand when opened, Exercise caution to avoid injury during banding removal.**

**CTS Tubing Straps**

**Std Pk Bag of 25 For Anchoring CTS Pipe**



Priced Each - Sold in Full Bag Quantity Only

556A	1/2	25	500	299
556B	3/4	25	500	299

**CTS Tube Talon with Nail**

**Std Pk Bag Quantities as Specified. For Anchoring CTS Pipe**



Priced Each - Sold in Full Bag Quantity Only

555A	1/2	100	1000	299
555B	3/4	100	1000	299
555C	1	50	500	299

**Solvent Cement -EverTUFF® CTS One Step**

NSF® Certified Lead Free



CTS5-005	1/4 Pint	24	0	701
CTS5-010	1/2 Pint	24	0	701
CTS5-020	Pint	12	0	701

**Suitable for Oil-Free air handling to 25 psi, not for distribution of compressed air or gas**

JJ DOWNS INDUSTRIAL PLASTICS INC.

416.236.1884
Toronto, ON
JJDOWNS.COM





CTS CPVC Product  
**EverTUFF® CPVC CTS Products**

Part Number	Size	Std Pk	Mstr Ctn	Prod Code
<b>Solvent Cement -EverTUFF® CTS One Step (continued)</b>				
CTS5-030	<b>Quart</b>	12	0	701
CTS5-040	<b>Gallon</b>	6	0	701



**Cap Daubers**

DHP-38	<b>3/8" for 1/2 Pint</b>	50	400	710
DHP-50	<b>1/2" for 1/2 Pint</b>	50	400	710
DHP-75	<b>3/4" for 1/2 Pint</b>	50	0	710
DP-50	<b>1/2" for Pint</b>	50	0	710
DP-75	<b>3/4" for Pint</b>	50	0	710
DP-125	<b>1-1/4" for Pint</b>	50	0	710
DQ-50	<b>1/2" for Quart</b>	50	0	710
DQ-75	<b>3/4" for Quart</b>	50	0	710
DQ-125	<b>1-1/4" for Quart</b>	50	0	710

3/8" for pipe to 3/4" • 1/2" for pipe to 1" • 3/4" for pipe to 1-1/2" • 1-1/4" for pipe 1-1/2" to 3"

**Can-Mate Daubers**

**Adjustable Plastic Applicator with Telescoping Stem for use with Standard 1/2 Pint, Pint and Quart Cans**



CM-50	<b>1/2"</b>	50	0	710
CM-75	<b>3/4"</b>	50	0	710
CM-150	<b>1-1/4"</b>	50	0	710

1/2" for pipe to 1" • 3/4" for pipe to 1-1/2" • 1-1/4" for pipe 1-1/2" to 3"

**Deburring Tool**

**Cone Type for pipe from 1/2" through 2"**



DEB-2	<b>1/2" to 2" Pipe</b>	1	6	710
-------	------------------------	---	---	-----

Suitable for Oil-Free air handling to 25 psi, not for distribution of compressed air or gas

JJD	
JJ DOWNS INDUSTRIAL PLASTICS INC.	international association of plastics distribution
416.236.1884	Toronto, ON JJDOWNS.COM