



**Double Containment Product**  
**Double Containment Overview**

**DOUBLE CONTAINMENT SYSTEM DESIGN**

Spears® Double Containment (DC) Fittings are constructed from standard fittings that are to be assembled on the jobsite. Spears® DC fittings work with standard pipe for both Carrier and Containment lines. Carrier fittings are equipped with special extender couplings for connection to carrier pipe. Simple, slip-on centralizer brackets used on the carrier pipe support this assembly inside the containment pipe. This design allows the carrier fitting to "float" within the containment fitting, allowing ease of movement for installation while reducing problems associated with thermal expansion and contraction during operation. This simplified approach to double containment makes installation very easy. However, successful installation requires proper design and planning of system layout, a basic understanding of how Spears® double containment fitting design works, and specific attention to a proper sequence of general assembly. See *Double Containment Design & Installation Guide* for additional details on design, installation and different configuration applications. DC fitting sizes are listed through 12", but additional sizes are available on request.

**CONFIGURATIONS**

**DC Pipe:** Spears® DC Fittings can be used with any standard pipe of the corresponding size and schedule. As a result, pipe is not listed in this product Schedule.  
**DC Fittings:** Each configuration includes all components to form an internal Carrier Fitting with applicable Extender-Couplings and an external Containment fitting. Each DC Fitting configuration is specified as Carrier Material & Schedule x Containment Material & Schedule. Refer to example below (additional information is found in specific fitting sections).

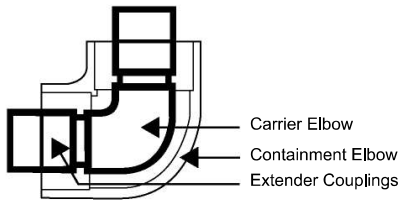
**Note: Assembled carrier/containment pipe available on request. Contact Spears® for additional information.**

**Example**

A Double Containment 90° Ell having a 1/2" Schedule 40 Carrier and 2" Schedule 40 Containment pipe would be listed as follows:

Product Name \_\_\_\_\_ DC 90° Ell  
 Configuration Description \_\_\_\_\_ PVC Sch 40 x PVC Sch 40

Part Number	Size	Prod Code
DC06-A005-A020	1/2X2	470



Centralizer Brackets should be ordered separately for Carrier pipe support in runs of Containment pipe.

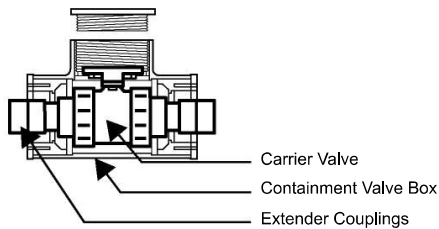
**Valve Boxes:** Like DC Fittings, Valve Boxes include all necessary components for connection to the designated Carrier x Containment system. Valve Boxes include the applicable True Union Industrial Ball Valve, Ball Check Valve, or Diaphragm Valve, with designated elastomer seals. Refer to example below (additional information is found in specific Valve Box sections).

**Example**

A Valve Box with True Union 2000 Industrial Ball Valve having a 1/2" valve with Schedule 40 Carrier and 2" Schedule 40 Containment pipe would be listed as follows:

Product Name \_\_\_\_\_ Valve Box, with PVC True Union 2000 Industrial Ball Valve  
 Configuration Description \_\_\_\_\_ PVC Sch 40 x PVC Sch 40

Size	EPDM	FKM	Prod Code
1/2X2	VBA20-A005-A020	VBA30-A005-A020	470



**Suitable for Oil-Free air handling to 25 psi, not for distribution of compressed air or gas**

**JJ DOWNS INDUSTRIAL PLASTICS INC.**

416.236.1884
Toronto, ON
JJDOWNS.COM



**Double Containment Product**  
**Tees**

**Tees**



DC Tees are made from standard Spears® pressure fittings in designated material and Schedule selected. Included are separate internal Carrier and external Containment fittings of the same configuration. Carrier fittings are equipped with extenders to facilitate cement assembly. Certain combinations use larger Containment tees that are bushed to specified size.

Important Note: Some Tees are shipped with the Carrier Tee branch extender separated from the Carrier Tee assembly to facilitate assembly. The Carrier Tee branch extension must be cemented in place after the run Carrier Tee assembly is completed. See *Double Containment Design & Installation Guide* for proper installation.

Centralizers are used inside the Containment piping system, but not inside fittings, installed on Carrier pipe and must be ordered separately according to same Carrier x Containment size and pipe schedule selected.

<sup>1</sup> Configuration uses larger size Containment Tee with Outlets Bushed down

**DC Tee PVC Sch 40 x PVC Sch 40**

Part Number	Size	Std Pk	Mstr Ctn	Prod Code
DC01-A005-A020	1/2X2	1	8	470
DC01-A007-A030	3/4X3	1	10	470
DC01-A010-A030	1X3	1	10	470
DC01-A015-A040	1-1/2X4	1	4	470
DC01-A020-A040	2X4	1	4	470
DC01-A030-A060	3X6	1	2	470
DC01-A040-A080	4X8	1	2	470
DC01-A060-A100	6X10	1	0	470
DC01-A080-A120	8X12	1	0	470

**DC Tee PVC Sch 40 x PVC Sch 40 Clear**

Part Number	Size	Std Pk	Mstr Ctn	Prod Code
DC01-A005-G020	1/2X2	1	8	470
DC01-A007-G030	3/4X3	1	10	470
DC01-A010-G030	1X3	1	10	470
DC01-A015-G040	1-1/2X4	1	4	470

**DC Tee PVC Sch 40 x PVC Sch 40 Clear (continued)**

Part Number	Size	Std Pk	Mstr Ctn	Prod Code
DC01-A020-G040	2X4	1	4	470
DC01-A030-G060	3X6	1	2	470
DC01-A040-G080	4X8	1	2	470

**DC Tee PVC Sch 80 x PVC Sch 40**

Part Number	Size	Std Pk	Mstr Ctn	Prod Code
DC01-B005-A020	1/2X2	1	9	470
DC01-B007-A030	3/4X3	1	10	470
DC01-B010-A030	1X3	1	10	470
DC01-B015-A040	1-1/2X4	1	4	470
DC01-B020-A040	2X4	1	2	470
DC01-B030-A060	3X6	2	0	470
DC01-B040-A080	4X8	1	2	470
DC01-B060-A100	6X10	1	0	470
DC01-B080-A120	8X12	1	0	470

**DC Tee PVC Sch 80 x PVC Sch 40 Clear**

Part Number	Size	Std Pk	Mstr Ctn	Prod Code
DC01-B005-G020	1/2X2	1	9	470
DC01-B007-G030	3/4X3	1	10	470
DC01-B010-G030	1X3	1	10	470
DC01-B015-G040	1-1/2X4	1	4	470
DC01-B020-G040	2X4	1	2	470
DC01-B030-G060	3X6	1	2	470
DC01-B040-G080	4X8	1	2	470

**DC Tee PVC Sch 80 x PVC Sch 80**

Part Number	Size	Std Pk	Mstr Ctn	Prod Code
DC01-B005-B020	1/2X2	1	10	470
DC01-B007-B030	3/4X3	1	10	470
DC01-B010-B030	1X3	1	5	470
DC01-B015-B040	1-1/2X4	1	4	470
DC01-B020-B040 <sup>1</sup>	2X4	1	0	470
DC01-B030-B060	3X6	2	0	470
DC01-B040-B080	4X8	1	0	470
DC01-B060-B100	6X10	1	0	470
DC01-B080-B120	8X12	1	0	470

**DC Tee CPVC Sch 80 x PVC Sch 40**

Part Number	Size	Std Pk	Mstr Ctn	Prod Code
<a href="#">DC01-C005-A020</a>	1/2X2	1	10	473
<a href="#">DC01-C007-A030</a>	3/4X3	1	5	473
<a href="#">DC01-C010-A030</a>	1X3	1	10	473
<a href="#">DC01-C015-A040</a>	1-1/2X4	1	4	473
<a href="#">DC01-C020-A040</a>	2X4	1	2	473
<a href="#">DC01-C030-A060</a>	3X6	1	2	473
<a href="#">DC01-C040-A080</a>	4X8	1	0	473
<a href="#">DC01-C060-A100</a>	6X10	1	0	473
<a href="#">DC01-C080-A120</a>	8X12	1	0	473

**DC Tee CPVC Sch 80 x PVC Sch 80**

Part Number	Size	Std Pk	Mstr Ctn	Prod Code
<a href="#">DC01-C005-B020</a>	1/2X2	1	9	473
<a href="#">DC01-C007-B030</a>	3/4X3	1	5	473
<a href="#">DC01-C010-B030</a>	1X3	1	5	473

**Suitable for Oil-Free air handling to 25 psi, not for distribution of compressed air or gas**

JJ DOWNS INDUSTRIAL PLASTICS INC.

416.236.1884
Toronto, ON
JJDOWNS.COM



**Double Containment Product**  
**Tees & 90° Ells**

**Tees**

**DC Tee CPVC Sch 80 x PVC Sch 80 (continued)**

Part Number	Size	Std Pk	Mstr Ctn	Prod Code
DC01-C015-B040	1-1/2X4	1	4	473
DC01-C020-B040 <sup>1</sup>	2X4	1	4	473
DC01-C030-B060	3X6	1	2	473
DC01-C040-B080	4X8	1	0	473
DC01-C060-B100	6X10	1	0	473
DC01-C080-B120	8X12	1	0	473

**DC Tee CPVC Sch 80 x CPVC Sch 80**

Part Number	Size	Std Pk	Mstr Ctn	Prod Code
DC01-C005-C020	1/2X2	1	10	473
DC01-C007-C030	3/4X3	1	10	473
DC01-C010-C030	1X3	1	5	473
DC01-C015-C040	1-1/2X4	1	5	473
DC01-C020-C040 <sup>1</sup>	2X4	1	0	473
DC01-C030-C060	3X6	1	2	473
DC01-C040-C080	4X8	1	0	473
DC01-C060-C100	6X10	1	0	473
DC01-C080-C120	8X12	1	0	473

**DC Tee CPVC Sch 80 x PVC Sch 40 Clear**

Part Number	Size	Std Pk	Mstr Ctn	Prod Code
DC01-C005-G020	1/2X2	1	9	473
DC01-C007-G030	3/4X3	1	5	473
DC01-C010-G030	1X3	1	10	473
DC01-C015-G040	1-1/2X4	1	6	473
DC01-C020-G040	2X4	1	2	473
DC01-C030-G060	3X6	1	2	473
DC01-C040-G080	4X8	1	2	473

**90° Ells**



DC 90° Ells are made from standard Spears® pressure fittings in designated material and Schedule selected. Included are separate internal Carrier and external Containment fittings of the same configuration. Carrier fittings are equipped with extenders to facilitate cement assembly. See *Double Containment Design & Installation Guide* for proper installation.

Centralizers are used inside the Containment piping system, but not inside fittings, installed on Carrier pipe and must be ordered separately according to same Carrier x Containment size and pipe schedule selected.

**DC 90° Ell PVC Sch 40 x PVC Sch 40**

Part Number	Size	Std Pk	Mstr Ctn	Prod Code
DC06-A005-A020	1/2X2	1	25	470
DC06-A007-A030	3/4X3	1	10	470
DC06-A010-A030	1X3	1	10	470
DC06-A015-A040	1-1/2X4	1	5	470
DC06-A020-A040	2X4	1	5	470
DC06-A030-A060	3X6	2	0	470
DC06-A040-A080	4X8	1	2	470
DC06-A060-A100	6X10	1	0	470
DC06-A080-A120	8X12	1	0	470

**DC 90° Ell PVC Sch 40 x PVC Sch 40 Clear**

Part Number	Size	Std Pk	Mstr Ctn	Prod Code
DC06-A005-G020	1/2X2	1	25	470
DC06-A007-G030	3/4X3	1	10	470
DC06-A010-G030	1X3	1	4	470
DC06-A015-G040	1-1/2X4	1	5	470
DC06-A020-G040	2X4	1	8	470
DC06-A030-G060	3X6	1	2	470
DC06-A040-G080	4X8	1	2	470

**DC 90° Ell PVC Sch 80 x PVC Sch 40**

Part Number	Size	Std Pk	Mstr Ctn	Prod Code
DC06-B005-A020	1/2X2	1	25	470
DC06-B007-A030	3/4X3	1	10	470
DC06-B010-A030	1X3	1	10	470
DC06-B015-A040	1-1/2X4	1	5	470
DC06-B020-A040	2X4	1	5	470
DC06-B030-A060	3X6	2	0	470
DC06-B040-A080	4X8	1	2	470
DC06-B060-A100	6X10	1	0	470
DC06-B080-A120	8X12	1	0	470

**DC 90° Ell PVC Sch 80 x PVC Sch 40 Clear**

Part Number	Size	Std Pk	Mstr Ctn	Prod Code
DC06-B005-G020	1/2X2	1	25	470
DC06-B007-G030	3/4X3	1	10	470
DC06-B010-G030	1X3	1	10	470
DC06-B015-G040	1-1/2X4	1	8	470
DC06-B020-G040	2X4	1	4	470
DC06-B030-G060	3X6	2	0	470
DC06-B040-G080	4X8	1	2	470

**DC 90° Ell PVC Sch 80 x PVC Sch 80**

Part Number	Size	Std Pk	Mstr Ctn	Prod Code
DC06-B005-B020	1/2X2	1	20	470
DC06-B007-B030	3/4X3	1	10	470
DC06-B010-B030	1X3	1	10	470
DC06-B015-B040	1-1/2X4	1	5	470
DC06-B020-B040	2X4	1	4	470
DC06-B030-B060	3X6	2	0	470
DC06-B040-B080	4X8	1	2	470
DC06-B060-B100	6X10	1	0	470
DC06-B080-B120	8X12	1	0	470

**Suitable for Oil-Free air handling to 25 psi, not for distribution of compressed air or gas**

JJ DOWNS INDUSTRIAL PLASTICS INC.

416.236.1884

Toronto, ON

JJDOWNS.COM

member  
**iapd**  
international association  
of plastics distribution



Double Co  
90° Ells & 45° Ells

90° Ells

DC 90° Ell CPVC Sch 80 x PVC Sch 40

Part Number	Size	Std Pk	Mstr Ctn	Prod Code
DC06-C005-A020	1/2X2	1	8	473
DC06-C007-A030	3/4X3	1	5	473
DC06-C010-A030	1X3	1	5	473
DC06-C015-A040	1-1/2X4	1	8	473
DC06-C020-A040	2X4	1	5	473
DC06-C030-A060	3X6	2	0	473
DC06-C040-A080	4X8	1	2	473
DC06-C060-A100	6X10	1	0	473
DC06-C080-A120	8X12	1	0	473

DC 90° Ell CPVC Sch 80 x PVC Sch 80

Part Number	Size	Std Pk	Mstr Ctn	Prod Code
DC06-C005-B020	1/2X2	1	25	473
DC06-C007-B030	3/4X3	1	5	473
DC06-C010-B030	1X3	1	5	473
DC06-C015-B040	1-1/2X4	1	4	473
DC06-C020-B040	2X4	1	4	473
DC06-C030-B060	3X6	2	0	473
DC06-C040-B080	4X8	1	2	473
DC06-C060-B100	6X10	1	0	473
DC06-C080-B120	8X12	1	0	473

DC 90° Ell CPVC Sch 80 x CPVC Sch 80

Part Number	Size	Std Pk	Mstr Ctn	Prod Code
DC06-C005-C020	1/2X2	1	25	473
DC06-C007-C030	3/4X3	1	10	473
DC06-C010-C030	1X3	1	5	473
DC06-C015-C040	1-1/2X4	1	5	473
DC06-C020-C040	2X4	1	4	473
DC06-C030-C060	3X6	2	0	473
DC06-C040-C080	4X8	1	2	473
DC06-C060-C100	6X10	1	0	473
DC06-C080-C120	8X12	1	0	473

DC 90° Ell CPVC Sch 80 x PVC Sch 40 Clear

Part Number	Size	Std Pk	Mstr Ctn	Prod Code
DC06-C005-G020	1/2X2	1	23	473
DC06-C007-G030	3/4X3	1	4	473
DC06-C010-G030	1X3	1	5	473
DC06-C015-G040	1-1/2X4	1	8	473
DC06-C020-G040	2X4	1	8	473
DC06-C030-G060	3X6	2	0	473
DC06-C040-G080	4X8	1	2	473

45° Ells



DC 45° Ells are made from standard Spears® pressure fittings in designated material and Schedule selected. Included are separate internal Carrier and external Containment fittings of the same configuration. Carrier fittings are equipped with extenders to facilitate cement assembly. See *Double Containment Design & Installation Guide* for proper installation.

Centralizers are used inside the Containment piping system, but not inside fittings, installed on Carrier pipe and must be ordered separately, according to same Carrier x Containment size and pipe schedule selected.

DC 45° Ell PVC Sch 40 x PVC Sch 40

Part Number	Size	Std Pk	Mstr Ctn	Prod Code
DC17-A005-A020	1/2X2	1	25	470
DC17-A007-A030	3/4X3	1	5	470
DC17-A010-A030	1X3	1	5	470
DC17-A015-A040	1-1/2X4	1	5	470
DC17-A020-A040	2X4	1	4	470
DC17-A030-A060	3X6	2	0	470
DC17-A040-A080	4X8	3	0	470
DC17-A060-A100	6X10	1	0	470
DC17-A080-A120	8X12	1	0	470

DC 45° Ell PVC Sch 40 x PVC Sch 40 Clear

Part Number	Size	Std Pk	Mstr Ctn	Prod Code
DC17-A005-G020	1/2X2	1	25	470
DC17-A007-G030	3/4X3	1	8	470
DC17-A010-G030	1X3	1	5	470
DC17-A015-G040	1-1/2X4	1	5	470
DC17-A020-G040	2X4	1	4	470
DC17-A030-G060	3X6	1	2	470
DC17-A040-G080	4X8	1	3	470

DC 45° Ell PVC Sch 80 x PVC Sch 40

Part Number	Size	Std Pk	Mstr Ctn	Prod Code
DC17-B005-A020	1/2X2	1	25	470
DC17-B007-A030	3/4X3	1	8	470
DC17-B010-A030	1X3	1	10	470
DC17-B015-A040	1-1/2X4	1	5	470

Suitable for Oil-Free air handling to 25 psi, not for distribution of compressed air or gas

JJ DOWNS INDUSTRIAL PLASTICS INC.

416.236.1884
Toronto, ON
JJDOWNS.COM



**Double Containment Product**  
**45° Ells & Couplings**

**45° Ells**

**DC 45° EII PVC Sch 80 x PVC Sch 40 (continued)**

Part Number	Size	Std Pk	Mstr Ctn	Prod Code
DC17-B020-A040	2X4	1	5	470
DC17-B030-A060	3X6	2	0	470
DC17-B040-A080	4X8	2	0	470
DC17-B060-A100	6X10	1	0	470
DC17-B080-A120	8X12	1	0	470

**DC 45° EII PVC Sch 80 x PVC Sch 40 Clear**

Part Number	Size	Std Pk	Mstr Ctn	Prod Code
DC17-B005-G020	1/2X2	1	10	470
DC17-B007-G030	3/4X3	1	8	470
DC17-B010-G030	1X3	1	5	470
DC17-B015-G040	1-1/2X4	1	5	470
DC17-B020-G040	2X4	1	5	470
DC17-B030-G060	3X6	1	4	470
DC17-B040-G080	4X8	1	3	470

**DC 45° EII PVC Sch 80 x PVC Sch 80**

Part Number	Size	Std Pk	Mstr Ctn	Prod Code
DC17-B005-B020	1/2X2	1	10	470
DC17-B007-B030	3/4X3	1	8	470
DC17-B010-B030	1X3	1	5	470
DC17-B015-B040	1-1/2X4	1	5	470
DC17-B020-B040	2X4	1	5	470
DC17-B030-B060	3X6	1	2	470
DC17-B040-B080	4X8	1	2	470
DC17-B060-B100	6X10	1	0	470
DC17-B080-B120	8X12	1	0	470

**DC 45° EII CPVC Sch 80 x PVC Sch 40**

Part Number	Size	Std Pk	Mstr Ctn	Prod Code
DC17-C005-A020	1/2X2	1	25	473
DC17-C007-A030	3/4X3	1	8	473
DC17-C010-A030	1X3	1	10	472
DC17-C015-A040	1-1/2X4	1	5	473
DC17-C020-A040	2X4	1	5	473
DC17-C030-A060	3X6	1	5	473
DC17-C040-A080	4X8	1	3	473
DC17-C060-A100	6X10	1	0	473
DC17-C080-A120	8X12	1	0	473

**DC 45° EII CPVC Sch 80 x PVC Sch 80**

Part Number	Size	Std Pk	Mstr Ctn	Prod Code
DC17-C005-B020	1/2X2	1	25	473
DC17-C007-B030	3/4X3	1	5	473
DC17-C010-B030	1X3	1	5	472
DC17-C015-B040	1-1/2X4	1	4	473
DC17-C020-B040	2X4	1	5	473
DC17-C030-B060	3X6	1	5	473
DC17-C040-B080	4X8	1	2	473
DC17-C060-B100	6X10	1	0	473
DC17-C080-B120	8X12	1	0	473

**DC 45° EII CPVC Sch 80 x CPVC Sch 80**

Part Number	Size	Std Pk	Mstr Ctn	Prod Code
DC17-C005-C020	1/2X2	1	10	473
DC17-C007-C030	3/4X3	1	8	473
DC17-C010-C030	1X3	1	10	472
DC17-C015-C040	1-1/2X4	1	5	473
DC17-C020-C040	2X4	1	5	473
DC17-C030-C060	3X6	1	2	473
DC17-C040-C080	4X8	1	2	473
DC17-C060-C100	6X10	1	0	473
DC17-C080-C120	8X12	1	0	473

**DC 45° EII CPVC Sch 80 x PVC Sch 40 Clear**

Part Number	Size	Std Pk	Mstr Ctn	Prod Code
DC17-C005-G020	1/2X2	1	10	473
DC17-C007-G030	3/4X3	1	8	473
DC17-C010-G030	1X3	1	10	472
DC17-C015-G040	1-1/2X4	1	5	473
DC17-C020-G040	2X4	1	5	473
DC17-C030-G060	3X6	1	5	473
DC17-C040-G080	4X8	1	3	473

**Couplings**



DC Couplings are made from standard Spears® pressure fittings in designated material and Schedule selected. Included are separate internal Carrier and external Containment fittings of the same configuration. Carrier fittings are equipped with extenders to facilitate cement assembly. See *Double Containment Design & Installation Guide* for proper installation.

Centralizers are used inside the Containment piping system, but not inside fittings, installed on Carrier pipe and must be ordered separately, according to same Carrier x Containment size and pipe schedule selected.

**DC Coupling PVC Sch 40 x PVC Sch 40**

Part Number	Size	Std Pk	Mstr Ctn	Prod Code
DC29-A005-A020	1/2X2	1	25	470
DC29-A007-A030	3/4X3	1	10	470
DC29-A010-A030	1X3	1	10	470
DC29-A015-A040	1-1/2X4	1	6	470
DC29-A020-A040	2X4	1	10	470

**Suitable for Oil-Free air handling to 25 psi, not for distribution of compressed air or gas**

JJ DOWNS INDUSTRIAL PLASTICS INC.

416.236.1884
Toronto, ON
JJDOWNS.COM



**Double Containment Product**  
**Couplings**

**Couplings**

**DC Coupling PVC Sch 40 x PVC Sch 40 (continued)**

Part Number	Size	Std Pk	Mstr Ctn	Prod Code
DC29-A030-A060	3X6	1	4	470
DC29-A040-A080	4X8	1	6	470
DC29-A060-A100	6X10	1	2	470
DC29-A080-A120	8X12	1	0	470

**DC Coupling PVC Sch 40 x PVC Sch 40 Clear**

Part Number	Size	Std Pk	Mstr Ctn	Prod Code
DC29-A005-G020	1/2X2	1	10	470
DC29-A007-G030	3/4X3	1	10	470
DC29-A010-G030	1X3	1	10	470
DC29-A015-G040	1-1/2X4	1	6	470
DC29-A020-G040	2X4	1	8	470
DC29-A030-G060	3X6	1	4	470
DC29-A040-G080	4X8	1	6	470

**DC Coupling PVC Sch 80 x PVC Sch 40**

Part Number	Size	Std Pk	Mstr Ctn	Prod Code
DC29-B005-A020	1/2X2	1	25	470
DC29-B007-A030	3/4X3	1	10	470
DC29-B010-A030	1X3	1	5	470
DC29-B015-A040	1-1/2X4	1	6	470
DC29-B020-A040	2X4	1	5	470
DC29-B030-A060	3X6	1	4	470
DC29-B040-A080	4X8	1	6	470
DC29-B060-A100	6X10	1	2	470
DC29-B080-A120	8X12	1	4	470

**DC Coupling PVC Sch 80 x PVC Sch 40 Clear**

Part Number	Size	Std Pk	Mstr Ctn	Prod Code
DC29-B005-G020	1/2X2	1	10	470
DC29-B007-G030	3/4X3	1	10	470
DC29-B010-G030	1X3	1	10	470
DC29-B015-G040	1-1/2X4	1	6	470
DC29-B020-G040	2X4	8	0	470
DC29-B030-G060	3X6	1	4	470
DC29-B040-G080	4X8	1	4	470

**DC Coupling PVC Sch 80 x PVC Sch 80**

Part Number	Size	Std Pk	Mstr Ctn	Prod Code
DC29-B005-B020	1/2X2	1	10	470
DC29-B007-B030	3/4X3	1	5	470
DC29-B010-B030	1X3	1	5	470
DC29-B015-B040	1-1/2X4	1	5	470
DC29-B020-B040	2X4	1	8	470
DC29-B030-B060	3X6	1	8	470
DC29-B040-B080	4X8	1	4	470
DC29-B060-B100	6X10	1	0	470
DC29-B080-B120	8X12	1	0	470

**DC Coupling CPVC Sch 80 x PVC Sch 40**

Part Number	Size	Std Pk	Mstr Ctn	Prod Code
DC29-C005-A020	1/2X2	1	25	473

**DC Coupling CPVC Sch 80 x PVC Sch 40 (continued)**

Part Number	Size	Std Pk	Mstr Ctn	Prod Code
DC29-C007-A030	3/4X3	1	10	473
DC29-C010-A030	1X3	1	10	473
DC29-C015-A040	1-1/2X4	1	6	473
DC29-C020-A040	2X4	1	6	473
DC29-C030-A060	3X6	1	4	473
DC29-C040-A080	4X8	1	6	473
DC29-C060-A100	6X10	1	2	473
DC29-C080-A120	8X12	1	4	473

**DC Coupling CPVC Sch 80 x PVC Sch 80**

Part Number	Size	Std Pk	Mstr Ctn	Prod Code
DC29-C005-B020	1/2X2	1	10	473
DC29-C007-B030	3/4X3	1	5	473
DC29-C010-B030	1X3	1	5	473
DC29-C015-B040	1-1/2X4	1	6	473
DC29-C020-B040	2X4	1	4	473
DC29-C030-B060	3X6	1	4	473
DC29-C040-B080	4X8	1	4	473
DC29-C060-B100	6X10	1	2	473
DC29-C080-B120	8X12	1	0	473

**DC Coupling CPVC Sch 80 x CPVC Sch 80**

Part Number	Size	Std Pk	Mstr Ctn	Prod Code
DC29-C005-C020	1/2X2	1	10	473
DC29-C007-C030	3/4X3	1	5	473
DC29-C010-C030	1X3	1	10	473
DC29-C015-C040	1-1/2X4	1	5	473
DC29-C020-C040	2X4	1	8	473
DC29-C030-C060	3X6	1	4	473
DC29-C040-C080	4X8	1	4	473
DC29-C060-C100	6X10	1	0	473
DC29-C080-C120	8X12	1	0	473

**DC Coupling CPVC Sch 80 x PVC Sch 40 Clear**

Part Number	Size	Std Pk	Mstr Ctn	Prod Code
DC29-C005-G020	1/2X2	1	10	473
DC29-C007-G030	3/4X3	1	10	473
DC29-C010-G030	1X3	1	10	473
DC29-C015-G040	1-1/2X4	1	6	473
DC29-C020-G040	2X4	1	6	473
DC29-C030-G060	3X6	1	10	473
DC29-C040-G080	4X8	1	6	473

**Suitable for Oil-Free air handling to 25 psi, not for distribution of compressed air or gas**

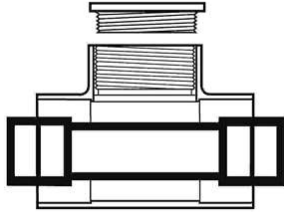
JJ DOWNS INDUSTRIAL PLASTICS INC.

416.236.1884
Toronto, ON
JJDOWNS.COM



**Double Containment Product**  
**Access Tees**

**Access Tees**



DC Access Tees are made from standard Spears® pressure fittings in designated material and Schedule selected. Included is an internal Carrier pipe section equipped with couplings and an external Containment Tee fitting equipped with a threaded Plug on the branch for access. See *Double Containment Design & Installation Guide* for proper installation.

Centralizers are used inside the Containment piping system, but not inside fittings, installed on Carrier pipe and must be ordered separately, according to same Carrier x Containment size and pipe schedule selected.

**DC Access Tee PVC Sch 40 x PVC Sch 40**

Part Number	Size	Std Pk	Mstr Ctn	Prod Code
DCAT-A005-A020	1/2X2	1	10	470
DCAT-A007-A030	3/4X3	1	5	470
DCAT-A010-A030	1X3	1	5	470
DCAT-A015-A040	1-1/2X4	1	3	470
DCAT-A020-A040	2X4	1	5	470
DCAT-A030-A060	3X6	1	4	470
DCAT-A040-A080	4X8	1	0	470
DCAT-A060-A100	6X10	1	0	470
DCAT-A080-A120	8X12	1	0	470

**DC Access Tee PVC Sch 40 x PVC Sch 40 Clear**

Part Number	Size	Std Pk	Mstr Ctn	Prod Code
DCAT-A005-G020	1/2X2	1	10	470
DCAT-A007-G030	3/4X3	1	10	470
DCAT-A010-G030	1X3	1	10	470
DCAT-A015-G040	1-1/2X4	1	6	470
DCAT-A020-G040	2X4	1	6	470
DCAT-A030-G060	3X6	1	4	470
DCAT-A040-G080	4X8	1	0	470

**DC Access Tee PVC Sch 80 x PVC Sch 40**

Part Number	Size	Std Pk	Mstr Ctn	Prod Code
DCAT-B005-A020	1/2X2	1	10	470
DCAT-B007-A030	3/4X3	1	10	470
DCAT-B010-A030	1X3	1	6	470
DCAT-B015-A040	1-1/2X4	1	6	470
DCAT-B020-A040	2X4	1	6	470
DCAT-B030-A060	3X6	1	4	470
DCAT-B040-A080	4X8	1	2	470

**DC Access Tee PVC Sch 80 x PVC Sch 40 (continued)**

Part Number	Size	Std Pk	Mstr Ctn	Prod Code
DCAT-B060-A100	6X10	1	0	470
DCAT-B080-A120	8X12	1	0	470

**DC Access Tee PVC Sch 80 x PVC Sch 40 Clear**

Part Number	Size	Std Pk	Mstr Ctn	Prod Code
DCAT-B005-G020	1/2X2	1	10	470
DCAT-B007-G030	3/4X3	1	10	470
DCAT-B010-G030	1X3	1	10	470
DCAT-B015-G040	1-1/2X4	1	3	470
DCAT-B020-G040	2X4	1	6	470
DCAT-B030-G060	3X6	1	4	470
DCAT-B040-G080	4X8	1	2	470

**DC Access Tee PVC Sch 80 x PVC Sch 80**

Part Number	Size	Std Pk	Mstr Ctn	Prod Code
DCAT-B005-B020	1/2X2	1	5	470
DCAT-B007-B030	3/4X3	1	5	470
DCAT-B010-B030	1X3	1	6	470
DCAT-B015-B040	1-1/2X4	1	4	470
DCAT-B020-B040	2X4	5	0	470
DCAT-B030-B060	3X6	1	4	470
DCAT-B040-B080	4X8	1	2	470
DCAT-B060-B100	6X10	1	0	470
DCAT-B080-B120	8X12	1	0	470

**DC Access Tee CPVC Sch 80 x PVC Sch 40**

Part Number	Size	Std Pk	Mstr Ctn	Prod Code
DCAT-C007-A030	3/4X3	1	5	473
DCAT-C010-A030	1X3	1	6	473
DCAT-C015-A040	1-1/2X4	1	6	473
DCAT-C020-A040	2X4	1	6	473
DCAT-C030-A060	3X6	1	4	473
DCAT-C040-A080	4X8	1	2	473
DCAT-C060-A100	6X10	1	0	473
DCAT-C080-A120	8X12	1	0	473

**DC Access Tee CPVC Sch 80 x PVC Sch 80**

Part Number	Size	Std Pk	Mstr Ctn	Prod Code
DCAT-C005-B020	1/2X2	1	10	473
DCAT-C007-B030	3/4X3	1	5	473
DCAT-C010-B030	1X3	1	5	473
DCAT-C015-B040	1-1/2X4	1	5	473
DCAT-C020-B040	2X4	1	5	473
DCAT-C030-B060	3X6	1	4	473
DCAT-C040-B080	4X8	1	2	473
DCAT-C060-B100	6X10	1	0	473
DCAT-C080-B120	8X12	1	0	473

**DC Access Tee CPVC Sch 80 x CPVC Sch 80**

Part Number	Size	Std Pk	Mstr Ctn	Prod Code
DCAT-C005-C020	1/2X2	1	10	473
DCAT-C007-C030	3/4X3	1	5	473
DCAT-C010-C030	1X3	1	6	473
DCAT-C015-C040	1-1/2X4	1	4	473
DCAT-C020-C040	2X4	1	5	473

**Suitable for Oil-Free air handling to 25 psi, not for distribution of compressed air or gas**

JJ DOWNS INDUSTRIAL PLASTICS INC.

416.236.1884
Toronto, ON
JJDOWNS.COM



**Double Containment Product**  
**Access Tees & Closure Fittings**

**Access Tees**

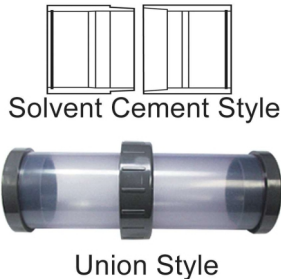
**DC Access Tee CPVC Sch 80 x CPVC Sch 80 (continued)**

Part Number	Size	Std Pk	Mstr Ctn	Prod Code
DCAT-C030-C060	3X6	1	4	473
DCAT-C040-C080	4X8	1	0	473
DCAT-C060-C100	6X10	1	0	473
DCAT-C080-C120	8X12	1	0	473

**DC Access Tee CPVC Sch 80 x PVC Sch 40 Clear**

Part Number	Size	Std Pk	Mstr Ctn	Prod Code
DCAT-C005-G020	1/2X2	1	10	473
DCAT-C007-G030	3/4X3	1	5	473
DCAT-C010-G030	1X3	1	5	473
DCAT-C015-G040	1-1/2X4	1	3	473
DCAT-C020-G040	2X4	1	6	473
DCAT-C030-G060	3X6	1	4	473
DCAT-C040-G080	4X8	1	2	473

**Closure Fittings**



A Closure Fitting is a special coupling configuration for joining both Carrier and Containment piping in situations where opposing runs of Carrier and Containment system must meet. Closure Fittings are frequently used at the end of a system where the final Termination Fitting must connect to a fixed point in the system. Spears® offers a complete range of Solvent Cement Closure Fittings that form a permanent solvent cement joint, plus special Union Closure Fittings in limited sizes that provide an easily-installed union to join these opposing Containment piping runs. See Double Containment Design & Installation Guide for proper installation.

Solvent Cement Closure Fittings consist of a male component and a female component. An internal O-ring on each component serves as a "cement-wiper" during installation to assure a proper joint. A "One-step" type cement, such as Spears® CPVC 24 for both PVC & CPVC, should be used to facilitate rapid assembly. See Double Containment Design & Installation Guide for proper installation.

Union Closure Fittings consist of a male component and female component with Union Nut and O-ring seal. Each component is installed on the carrier pipe incorporating a double O-ring seal on the carrier pipe with cemented retainers. Union Closure Fitting allows for easy access to carrier pipe after installation and also provides a small amount of expansion and contraction. See Double Containment Design & Installation Guide and product-enclosed instructions for proper installation.

**Closure Fittings**

Centralizers are used inside the Containment piping system, but not inside fittings installed on Carrier pipe and must be ordered separately, according to same Carrier x Containment size and pipe schedule selected.

**DC Solvent Cement Closure Fitting PVC Sch 80**

Part Number	Size	Std Pk	Mstr Ctn	Prod Code
DCCF-A030	3	1	10	470
DCCF-A040	4	1	5	470
DCCF-A060	6	1	2	470
DCCF-A080	8	1	0	470
DCCF-A100	10	1	2	470
DCCF-A120	12	1	2	470

**DC Solvent Cement Closure Fitting PVC Sch 80**

Part Number	Size	Std Pk	Mstr Ctn	Prod Code
DCCF-B020	2	10	0	470
DCCF-B030	3	1	10	470
DCCF-B040	4	5	0	470
DCCF-B060	6	1	2	470
DCCF-B080	8	1	3	470
DCCF-B100	10	1	2	470
DCCF-B120	12	1	0	470

**DC Solvent Cement Closure Fitting CPVC Sch 80**

Part Number	Size	Std Pk	Mstr Ctn	Prod Code
DCCF-C020	2	10	0	473
DCCF-C030	3	1	10	473
DCCF-C040	4	5	0	473
DCCF-C060	6	1	2	473
DCCF-C080	8	1	3	473
DCCF-C100	10	1	2	473
DCCF-C120	12	1	0	473

**DC Solvent Cement Closure Fitting PVC Sch 40 Clear**

Part Number	Size	Std Pk	Mstr Ctn	Prod Code
DCCF-G030	3	1	10	470
DCCF-G040	4	1	5	470
DCCF-G060	6	1	2	470
DCCF-G080	8	1	6	470

**DC Union Closure Fittings PVC Clear - EPDM Seals**

Part Number	Size	Std Pk	Mstr Ctn	Prod Code
DCUC-030	3	1	0	471
DCUC-040	4	1	0	471
DCUC-060	6	1	0	471

Maximum 100 psi Short Term Hydrostatic Test Only.  
50 psi Working Pressure @ 73° F (23° C)

**DC Union Closure Fittings PVC Clear - FKM Seals**

Part Number	Size	Std Pk	Mstr Ctn	Prod Code
DCUC2-040	4	1	0	471
DCUC2-060	6	1	0	471

**Suitable for Oil-Free air handling to 25 psi, not for distribution of compressed air or gas**

JJ DOWNS INDUSTRIAL PLASTICS INC.

416.236.1884
Toronto, ON
JJDOWNS.COM

international association  
of plastics distribution





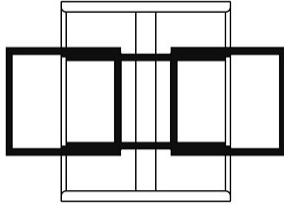
**Double Containment Product**  
**Closure Fittings & Isolation Couplers**

**Closure Fittings**

**DC Union Closure Fittings PVC Clear - FKM Seals (continued)**

Part Number	Size	Std Pk	Mstr Ctn	Prod Code
Maximum 100 psi Short Term Hydrostatic Test Only. 50 psi Working Pressure @ 73° F (23° C)				

**Isolation Couplers**



DC Isolation Couplers are to isolate a containment section for improved location identification if a leak is detected. When cemented into place, a suitable seal is formed for isolation of the containment sections. See *Double Containment Design & Installation Guide* for proper installation.

Centralizers are used inside the Containment piping system, but not inside fittings, installed on Carrier pipe and must be ordered separately, according to same Carrier x Containment size and pipe schedule selected.

**DC Isolation Coupler PVC Sch 40 x PVC Sch 40**

Part Number	Size	Std Pk	Mstr Ctn	Prod Code
DCDB-A005-A020	1/2X2	1	5	470
DCDB-A007-A030	3/4X3	1	5	470
DCDB-A010-A030	1X3	1	5	470
DCDB-A015-A040	1-1/2X4	1	5	470
DCDB-A020-A040	2X4	1	5	470
DCDB-A030-A060	3X6	1	4	470
DCDB-A040-A080	4X8	1	4	470
DCDB-A060-A100	6X10	1	10	470
DCDB-A080-A120	8X12	1	0	470

**DC Isolation Coupler PVC Sch 40 x PVC Sch 40 Clear**

Part Number	Size	Std Pk	Mstr Ctn	Prod Code
DCDB-A005-G020	1/2X2	1	5	470
DCDB-A007-G030	3/4X3	1	5	470
DCDB-A010-G030	1X3	1	5	470
DCDB-A015-G040	1-1/2X4	1	5	470
DCDB-A020-G040	2X4	1	5	470
DCDB-A030-G060	3X6	1	4	470
DCDB-A040-G080	4X8	1	4	470

**DC Isolation Coupler PVC Sch 80 x PVC Sch 40**

Part Number	Size	Std Pk	Mstr Ctn	Prod Code
DCDB-B005-A020	1/2X2	1	5	470
DCDB-B007-A030	3/4X3	1	5	470
DCDB-B010-A030	1X3	1	4	470

**DC Isolation Coupler PVC Sch 80 x PVC Sch 40 (continued)**

Part Number	Size	Std Pk	Mstr Ctn	Prod Code
DCDB-B015-A040	1-1/2X4	1	5	470
DCDB-B020-A040	2X4	1	5	470
DCDB-B030-A060	3X6	1	5	470
DCDB-B040-A080	4X8	1	4	470
DCDB-B060-A100	6X10	1	0	470
DCDB-B080-A120	8X12	1	0	470

**DC Isolation Coupler PVC Sch 80 x PVC Sch 40 Clear**

Part Number	Size	Std Pk	Mstr Ctn	Prod Code
DCDB-B005-G020	1/2X2	1	5	470
DCDB-B010-G030	1X3	1	5	470
DCDB-B015-G040	1-1/2X4	1	5	470
DCDB-B020-G040	2X4	1	5	470
DCDB-B030-G060	3X6	1	5	470
DCDB-B040-G080	4X8	1	4	470

**DC Isolation Coupler PVC Sch 80 x PVC Sch 80**

Part Number	Size	Std Pk	Mstr Ctn	Prod Code
DCDB-B005-B020	1/2X2	1	12	470
DCDB-B007-B030	3/4X3	1	5	470
DCDB-B010-B030	1X3	1	5	470
DCDB-B015-B040	1-1/2X4	1	4	470
DCDB-B020-B040	2X4	1	4	470
DCDB-B030-B060	3X6	1	4	470
DCDB-B040-B080	4X8	1	4	470
DCDB-B060-B100	6X10	1	0	470
DCDB-B080-B120	8X12	1	0	470

**DC Isolation Coupler CPVC Sch 80 x PVC Sch 40**

Part Number	Size	Std Pk	Mstr Ctn	Prod Code
<a href="#">DCDB-C005-A020</a>	1/2X2	1	5	473
<a href="#">DCDB-C007-A030</a>	3/4X3	1	5	473
<a href="#">DCDB-C010-A030</a>	1X3	1	5	473
<a href="#">DCDB-C015-A040</a>	1-1/2X4	1	5	473
<a href="#">DCDB-C020-A040</a>	2X4	1	5	473
<a href="#">DCDB-C030-A060</a>	3X6	1	5	473
<a href="#">DCDB-C040-A080</a>	4X8	1	4	473
<a href="#">DCDB-C060-A100</a>	6X10	1	0	473

**DC Isolation Coupler CPVC Sch 80 x Sch 80 Gray**

Part Number	Size	Std Pk	Mstr Ctn	Prod Code
<a href="#">DCDB-C005-B020</a>	1/2X2	1	12	473
<a href="#">DCDB-C007-B030</a>	3/4X3	1	5	473
<a href="#">DCDB-C010-B030</a>	1X3	1	5	473
<a href="#">DCDB-C015-B040</a>	1-1/2X4	1	4	473
<a href="#">DCDB-C020-B040</a>	2X4	4	0	473
<a href="#">DCDB-C030-B060</a>	3X6	1	5	473
<a href="#">DCDB-C040-B080</a>	4X8	1	4	473
<a href="#">DCDB-C060-B100</a>	6X10	1	0	473

**DC Isolation Coupler CPVC Sch 80 x CPVC Sch 80**

Part Number	Size	Std Pk	Mstr Ctn	Prod Code
<a href="#">DCDB-C005-C020</a>	1/2X2	1	12	473
<a href="#">DCDB-C007-C030</a>	3/4X3	1	5	473
<a href="#">DCDB-C010-C030</a>	1X3	1	5	473

**Suitable for Oil-Free air handling to 25 psi, not for distribution of compressed air or gas**

JJ DOWNS INDUSTRIAL PLASTICS INC.

416.236.1884      Toronto, ON      JJDOWNS.COM



**Double Containment Product**  
**Isolation Couplers & Termination Fittings**

**Isolation Couplers**

**DC Isolation Coupler CPVC Sch 80 x CPVC Sch 80 (continued)**

Part Number	Size	Std Pk	Mstr Ctn	Prod Code
<a href="#">DCDB-C015-C040</a>	<b>1-1/2X4</b>	1	4	473
<a href="#">DCDB-C020-C040</a>	<b>2X4</b>	1	4	473
<a href="#">DCDB-C030-C060</a>	<b>3X6</b>	1	4	473
<a href="#">DCDB-C040-C080</a>	<b>4X8</b>	1	4	473
<a href="#">DCDB-C060-C100</a>	<b>6X10</b>	1	0	473

**DC Isolation Coupler CPVC Sch 80 x PVC Sch 40 Clear**

Part Number	Size	Std Pk	Mstr Ctn	Prod Code
<a href="#">DCDB-C005-G020</a>	<b>1/2X2</b>	1	5	473
<a href="#">DCDB-C007-G030</a>	<b>3/4X3</b>	1	5	473
<a href="#">DCDB-C010-G030</a>	<b>1X3</b>	1	5	473
<a href="#">DCDB-C015-G040</a>	<b>1-1/2X4</b>	1	5	473
<a href="#">DCDB-C020-G040</a>	<b>2X4</b>	1	5	473
<a href="#">DCDB-C030-G060</a>	<b>3X6</b>	1	5	473

**Termination Fittings**



DC Termination Fittings are a special configuration for starting or stopping the containment portion of a system. Termination Fittings consist of a reducer coupling to accept the Containment pipe that is pre-fabricated to an internal extender coupling for connection to existing Carrier system. See *Double Containment Design & Installation Guide* for proper installation.

Centralizers are used inside the Containment piping system, but not inside fittings, installed on Carrier pipe and must be ordered separately, according to same Carrier x Containment size and pipe schedule selected.

**DC Termination Fitting PVC Sch 40 x PVC Sch 40**

Part Number	Size	Std Pk	Mstr Ctn	Prod Code
<a href="#">DCTM-A005-A020</a>	<b>1/2X2</b>	8	0	470
<a href="#">DCTM-A007-A030</a>	<b>3/4X3</b>	8	0	470
<a href="#">DCTM-A010-A030</a>	<b>1X3</b>	9	0	470
<a href="#">DCTM-A015-A040</a>	<b>1-1/2X4</b>	4	0	470
<a href="#">DCTM-A020-A040</a>	<b>2X4</b>	5	0	470
<a href="#">DCTM-A030-A060</a>	<b>3X6</b>	1	2	470
<a href="#">DCTM-A040-A080</a>	<b>4X8</b>	1	2	470
<a href="#">DCTM-A060-A100</a>	<b>6X10</b>	1	2	470
<a href="#">DCTM-A080-A120</a>	<b>8X12</b>	1	2	470

**DC Termination Fitting PVC Sch 40 x PVC Sch 40 Clear**

Part Number	Size	Std Pk	Mstr Ctn	Prod Code
<a href="#">DCTM-A005-G020</a>	<b>1/2X2</b>	1	8	470

**DC Termination Fitting PVC Sch 40 x PVC Sch 40 Clear (continued)**

Part Number	Size	Std Pk	Mstr Ctn	Prod Code
<a href="#">DCTM-A007-G030</a>	<b>3/4X3</b>	7	0	470
<a href="#">DCTM-A010-G030</a>	<b>1X3</b>	1	9	470
<a href="#">DCTM-A015-G040</a>	<b>1-1/2X4</b>	1	4	470
<a href="#">DCTM-A020-G040</a>	<b>2X4</b>	1	4	470
<a href="#">DCTM-A030-G060</a>	<b>3X6</b>	1	2	470
<a href="#">DCTM-A040-G080</a>	<b>4X8</b>	1	3	470

**DC Termination Fitting PVC Sch 80 x PVC Sch 40**

Part Number	Size	Std Pk	Mstr Ctn	Prod Code
<a href="#">DCTM-B005-A020</a>	<b>1/2X2</b>	8	0	470
<a href="#">DCTM-B007-A030</a>	<b>3/4X3</b>	9	0	470
<a href="#">DCTM-B010-A030</a>	<b>1X3</b>	8	0	470
<a href="#">DCTM-B015-A040</a>	<b>1-1/2X4</b>	4	0	470
<a href="#">DCTM-B020-A040</a>	<b>2X4</b>	5	0	470
<a href="#">DCTM-B030-A060</a>	<b>3X6</b>	4	0	470
<a href="#">DCTM-B040-A080</a>	<b>4X8</b>	3	0	470
<a href="#">DCTM-B060-A100</a>	<b>6X10</b>	1	0	470
<a href="#">DCTM-B080-A120</a>	<b>8X12</b>	1	3	470

**DC Termination Fitting PVC Sch 80 x PVC Sch 40 Clear**

Part Number	Size	Std Pk	Mstr Ctn	Prod Code
<a href="#">DCTM-B005-G020</a>	<b>1/2X2</b>	9	0	470
<a href="#">DCTM-B007-G030</a>	<b>3/4X3</b>	10	0	470
<a href="#">DCTM-B010-G030</a>	<b>1X3</b>	8	0	470
<a href="#">DCTM-B015-G040</a>	<b>1-1/2X4</b>	4	0	470
<a href="#">DCTM-B020-G040</a>	<b>2X4</b>	5	0	470
<a href="#">DCTM-B030-G060</a>	<b>3X6</b>	1	2	470
<a href="#">DCTM-B040-G080</a>	<b>4X8</b>	1	3	470

**DC Termination Fitting PVC Sch 80 x PVC Sch 80**

Part Number	Size	Std Pk	Mstr Ctn	Prod Code
<a href="#">DCTM-B005-B020</a>	<b>1/2X2</b>	10	0	470
<a href="#">DCTM-B007-B030</a>	<b>3/4X3</b>	8	0	470
<a href="#">DCTM-B010-B030</a>	<b>1X3</b>	8	0	470
<a href="#">DCTM-B015-B040</a>	<b>1-1/2X4</b>	4	0	470
<a href="#">DCTM-B020-B040</a>	<b>2X4</b>	4	0	470
<a href="#">DCTM-B030-B060</a>	<b>3X6</b>	2	0	470
<a href="#">DCTM-B040-B080</a>	<b>4X8</b>	2	0	470
<a href="#">DCTM-B060-B100</a>	<b>6X10</b>	1	0	470
<a href="#">DCTM-B080-B120</a>	<b>8X12</b>	1	0	470

**DC Termination Fitting CPVC Sch 80 x PVC Sch 40**

Part Number	Size	Std Pk	Mstr Ctn	Prod Code
<a href="#">DCTM-C005-A020</a>	<b>1/2X2</b>	8	0	473
<a href="#">DCTM-C007-A030</a>	<b>3/4X3</b>	1	8	473
<a href="#">DCTM-C010-A030</a>	<b>1X3</b>	8	0	473
<a href="#">DCTM-C015-A040</a>	<b>1-1/2X4</b>	4	0	473
<a href="#">DCTM-C020-A040</a>	<b>2X4</b>	3	0	473
<a href="#">DCTM-C030-A060</a>	<b>3X6</b>	1	2	473
<a href="#">DCTM-C040-A080</a>	<b>4X8</b>	1	3	473
<a href="#">DCTM-C060-A100</a>	<b>6X10</b>	1	0	473
<a href="#">DCTM-C080-A120</a>	<b>8X12</b>	1	3	473

**Suitable for Oil-Free air handling to 25 psi, not for distribution of compressed air or gas**

JJ DOWNS INDUSTRIAL PLASTICS INC.

international association  
of plastics distribution

416.236.1884      Toronto, ON      JJDOWNS.COM



**Double Containment Product**  
**Termination Fittings & Centralizers**

**Termination Fittings**

**DC Termination Fitting CPVC Sch 80 x Sch 80 Gray**

Part Number	Size	Std Pk	Mstr Ctn	Prod Code
DCTM-C005-B020	1/2X2	8	0	473
DCTM-C007-B030	3/4X3	8	0	473
DCTM-C010-B030	1X3	8	0	473
DCTM-C015-B040	1-1/2X4	4	0	473
DCTM-C020-B040	2X4	1	4	473
DCTM-C030-B060	3X6	1	2	473
DCTM-C040-B080	4X8	1	3	473
DCTM-C060-B100	6X10	1	2	473
DCTM-C080-B120	8X12	1	0	473

**DC Termination Fitting CPVC Sch 80 x PVC Sch 40 Clear**

Part Number	Size	Std Pk	Mstr Ctn	Prod Code
DCTM-C005-G020	1/2X2	8	0	473
DCTM-C007-G030	3/4X3	1	9	473
DCTM-C010-G030	1X3	9	0	473
DCTM-C015-G040	1-1/2X4	10	0	473
DCTM-C020-G040	2X4	3	0	473
DCTM-C030-G060	3X6	1	15	473
DCTM-C040-G080	4X8	1	3	473

**DC Termination Fitting CPVC Sch 80 x CPVC Sch 80**

Part Number	Size	Std Pk	Mstr Ctn	Prod Code
DCTM-C005-C020	1/2X2	9	0	473
DCTM-C007-C030	3/4X3	8	0	473
DCTM-C010-C030	1X3	4	0	473
DCTM-C015-C040	1-1/2X4	4	0	473
DCTM-C020-C040	2X4	4	0	473
DCTM-C030-C060	3X6	2	0	473
DCTM-C040-C080	4X8	2	0	473
DCTM-C060-C100	6X10	1	0	473
DCTM-C080-C120	8X12	1	0	473

**Centralizers**



Centralizers are a simple slip-on design that are positioned and held in place by a few wraps of clean-room adhesive on each side. Centralizers hold the Carrier piping centrally located within the Containment piping and are designed with an annular space for routing of leak detection cable, if used. See *Double Containment Design & Installation Guide* for proper installation. The following Spacing Chart can be used as a guide for determining the quantity of Centralizers needed, based on temperature and Carrier pipe size and schedule selected.

**Centralizers**

**RECOMMENDED MINIMUM CENTRALIZER SUPPORT SPACING (ft.) \***

Carrier Size (in.)	PVC SCHEDULE 40 CARRIER				
	Temperature °F				
	60°	80°	100°	120°	140°
1/2	4-1/2	4-1/2	4	2-1/2	2-1/2
3/4	5	4-1/2	4	2-1/2	2-1/2
1	5-1/2	5	4-1/2	3	2-1/2
1-1/2	6	5-1/2	5	3-1/2	3
2	6	5-1/2	5	3-1/2	3
3	7	7	6	4	3-1/2
4	7-1/2	7	6-1/2	4-1/2	4
6	8-1/2	8	7-1/2	5	4-1/2
8	9	8-1/2	8	5	4-1/2
10	10	9	8-1/2	5-1/2	5
12	11-1/2	10-1/2	9-1/2	6-1/2	5-1/2

Carrier Size (in.)	PVC SCHEDULE 80 CARRIER				
	Temperature °F				
	60°	80°	100°	120°	140°
1/2	5	4-1/2	4-1/2	3	2-1/2
3/4	5-1/2	5	4-1/2	3	2-1/2
1	6	5-1/2	5	3-1/2	3
1-1/2	6-1/2	6	5-1/2	3-1/2	3-1/2
2	7	6-1/2	6	4	3-1/2
3	8	7-1/2	7	4-1/2	4
4	9	8-1/2	7-1/2	5	4-1/2
6	10	9-1/2	9	6	5
8	11	10-1/2	9-1/2	6-1/2	5-1/2
10	12	11	10	7	6
12	5-1/2	13	12	10-1/2	7-1/2

Carrier Size (in.)	CPVC SCHEDULE 80 CARRIER					
	Temperature °F					
	73°	100°	120°	140°	160°	180°
1/2	5-1/2	5	4-1/2	4-1/2	3	2-1/2
3/4	5-1/2	5-1/2	5	4-1/2	3	2-1/2
1	6	6	5-1/2	5	3-1/2	2
1-1/2	7	6-1/2	6	5-1/2	3-1/2	3-1/2
2	7	7	6-1/2	6	4	3-1/2
3	8	8	7-1/2	7	4-1/2	4
4	9	8-1/2	8	7-1/2	5	4-1/2
6	10	9-1/2	9	8	5-1/2	5
8	11	10-1/2	10	9	6	5-1/2
10	11-1/2	11	10-1/2	9-1/2	6-1/2	6
12	12-1/2	12	11-1/2	10-1/2	7-1/2	6-1/2

**Note:** Specified minimum spacing can also be used for system support according to the secondary Containment pipe size and schedule used. Where practical, system support should correspond to internal carrier support (centralizers) to minimize concentrated point loads.

**Note:** Data furnished is based on raw material manufacturer's information. This information can be considered a reliable recommendation, but not a guarantee. Actual service conditions and system parameters should be evaluated by qualified personnel.

**DC Centralizer IPS O.D. x Sch 40 White I.D.**

Part Number	Size	Std Pk	Mstr Ctn	Prod Code
DCCT-H005-A020	1/2X2	55	330	479

**Suitable for Oil-Free air handling to 25 psi, not for distribution of compressed air or gas**

JJ DOWNS INDUSTRIAL PLASTICS INC.

416.236.1884
Toronto, ON
JJDOWNS.COM



**Double Containment Product**  
**Centralizers & Ball Valve Box With Valve**

**Centralizers**

**DC Centralizer IPS O.D. x Sch 40 White I.D. (continued)**

Part Number	Size	Std Pk	Mstr Ctn	Prod Code
<b>Carrier x Containment</b>				
DCCT-H007-A030	3/4X3	55	220	479
DCCT-H010-A030	1X3	55	220	479
DCCT-H015-A040	1-1/2X4	55	0	479
DCCT-H020-A040	2X4	55	0	479
DCCT-H030-A060	3X6	55	0	479
DCCT-H040-A080	4X8	55	0	479
DCCT-H060-A100	6X10	25	0	479
DCCT-H080-A120	8X12	25	0	479

**DC Centralizer IPS O.D. x Sch 40 Clear I.D.**

Part Number	Size	Std Pk	Mstr Ctn	Prod Code
<b>Carrier x Containment</b>				
DCCT-H005-G020	1/2X2	55	330	479
DCCT-H007-G020	3/4X2	55	330	479
DCCT-H010-G030	1X3	55	220	479
DCCT-H015-G040	1-1/2X4	55	220	479
DCCT-H020-G040	2X4	55	0	479
DCCT-H030-G060	3X6	55	0	479
DCCT-H040-G080	4X8	55	0	479

**DC Centralizer IPS O.D. x Sch 80 PVC I.D.**

Part Number	Size	Std Pk	Mstr Ctn	Prod Code
<b>Carrier x Containment</b>				
DCCT-H005-B020	1/2X2	55	330	479
DCCT-H007-B020	3/4X2	55	330	479
DCCT-H010-B030	1X3	55	220	479
DCCT-H015-B040	1-1/2X4	55	0	479
DCCT-H020-B040	2X4	55	0	479
DCCT-H030-B060	3X6	55	0	479
DCCT-H040-B080	4X8	55	0	479
DCCT-H060-B100	6X10	25	0	479
DCCT-H080-B120	8X12	20	0	479

**DC Centralizer IPS O.D. x Sch 80 CPVC I.D.**

Part Number	Size	Std Pk	Mstr Ctn	Prod Code
<b>Carrier x Containment</b>				
DCCT-H005-C020	1/2X2	55	330	479
DCCT-H007-C030	3/4X3	55	220	479
DCCT-H010-C030	1X3	55	220	479
DCCT-H015-C040	1-1/2X4	55	0	479
DCCT-H020-C040	2X4	55	0	479
DCCT-H030-C060	3X6	55	0	479
DCCT-H040-C080	4X8	55	0	479
DCCT-H060-C100	6X10	24	0	479
DCCT-H080-C120	8X12	20	0	479

**Ball Valve Box With Valve**



DC Ball Valve Boxes are made from a standard Spears® Tee fitting in designated material and Schedule selected, which is fitted with Carrier pipe size Ball Valve and bushed to specified Containment size. Includes Containment Valve Box fitting with threaded Access Plug, True Union 2000 Industrial Ball Valve with Lockout

Handle and Centralizers for positioning valve in box. Carrier valves are equipped with extenders to facilitate cement assembly. See *Double Containment Design & Installation Guide* for proper installation.

**General Installation Information:** Ball check valves may be installed in either horizontal or vertical position. A minimum of ten (10) pipe diameters' distance maintained from any pump or other source of turbulence. Check valves **MUST** be installed with the valve's FLOW arrow pointing in the direction of flow. While Valve Boxes include Centralizers for valve, additional Centralizers are used inside the Containment piping system installed on Carrier pipe and **must be ordered separately**, according to same Carrier x Containment size and pipe schedule selected.

True Union 2000 Industrial Ball Valve Specifications, Sizes 1/2" - 2":

Material:	PVC/CPVC	Maximum Service Temperature
Seats:	PTFE	PVC = 140°F (60°C)
Seals:	EPDM/FKM	CPVC = 200°F (93°C)
PR, Water:	235 psi @ 73°F (23°C), 1/2" - 2"	Temperature/Pressure De-ratings Apply

All Valves assembled with Silicone-Free, Water Soluble Lubricant

**Valve Box, with PVC True Union 2000 Industrial Ball Valve  
PVC Sch 40 x PVC Sch 40**

Size	EPDM	FKM	Std Pk	Mstr Pk	Prod Code
1/2X2	VBA20-A005-A020	VBA30-A005-A020	1	0	470
3/4X3	VBA20-A007-A030	VBA30-A007-A030	1	5	470
1X3	VBA20-A010-A030	VBA30-A010-A030	1	0	470
1-1/2X4	VBA20-A015-A040	VBA30-A015-A040	1	0	470
2X4	VBA20-A020-A040	VBA30-A020-A040	1	0	470

**Valve Box, with PVC True Union 2000 Industrial Ball Valve  
PVC Sch 40 x PVC Sch 40 Clear**

Size	EPDM	FKM	Std Pk	Mstr Pk	Prod Code
1/2X2	VBA20-A005-G020	VBA30-A005-G020	1	0	470
3/4X3	VBA20-A007-G030	VBA30-A007-G030	1	0	470
1X3	VBA20-A010-G030	VBA30-A010-G030	1	0	470
1-1/2X4	VBA20-A015-G040	VBA30-A015-G040	1	0	470

Suitable for Oil-Free air handling to 25 psi, not for distribution of compressed air or gas

JJ DOWNS INDUSTRIAL PLASTICS INC.

416.236.1884
Toronto, ON
JJDOWNS.COM



**Double Containment Product**  
**Ball Valve Box With Valve & Ball Check Valve**  
**Box With Valve**

**Ball Valve Box With Valve**

**Valve Box, with PVC True Union 2000 Industrial Ball Valve**  
**PVC Sch 40 x PVC Sch 40 Clear (continued)**

Size	EPDM	FKM	Std Pk	Mstr Pk	Prod Code
2X4	VBA20-A020-G040	VBA30-A020-G040	1	0	470

**Valve Box, with PVC True Union 2000 Industrial Ball Valve**  
**PVC Sch 80 x PVC Sch 40**

Size	EPDM	FKM	Std Pk	Mstr Pk	Prod Code
1/2X2	VBA20-B005-A020	VBA30-B005-A020	1	0	470
3/4X3	VBA20-B007-A030	VBA30-B007-A030	1	0	470
1X3	VBA20-B010-A030	VBA30-B010-A030	1	0	470
1-1/2X4	VBA20-B015-A040	VBA30-B015-A040	1	0	470
2X4	VBA20-B020-A040	VBA30-B020-A040	1	0	470

**Valve Box, with PVC True Union 2000 Industrial Ball Valve**  
**PVC Sch 80 x PVC Sch 40 Clear**

Size	EPDM	FKM	Std Pk	Mstr Pk	Prod Code
1/2X2	VBA20-B005-G020	VBA30-B005-G020	1	0	470
3/4X3	VBA20-B007-G030	VBA30-B007-G030	1	0	470
1X3	VBA20-B010-G030	VBA30-B010-G030	1	0	470
1-1/2X4	VBA20-B015-G040	VBA30-B015-G040	1	0	470
2X4	VBA20-B020-G040	VBA30-B020-G040	1	0	470

**Valve Box, with PVC True Union 2000 Industrial Ball Valve**  
**PVC Sch 80 x PVC Sch 80**

Size	EPDM	FKM	Std Pk	Mstr Pk	Prod Code
1/2X2	VBA20-B005-B020	VBA30-B005-B020	1	0	470
3/4X3	VBA20-B007-B030	VBA30-B007-B030	1	0	470
1X3	VBA20-B010-B030	VBA30-B010-B030	1	0	470
1-1/2X4	VBA20-B015-B040	VBA30-B015-B040	1	0	470
2X4	VBA20-B020-B040	VBA30-B020-B040	1	0	470

**Valve Box, with CPVC True Union 2000 Industrial Ball Valve**  
**CPVC Sch 80 x PVC Sch 40**

Size	EPDM	FKM	Std Pk	Mstr Pk	Prod Code
1/2X2	VBA20-C005-A020	VBA30-C005-A020	1	0	473
3/4X3	VBA20-C007-A030	VBA30-C007-A030	1	0	473
1X3	VBA20-C010-A030	VBA30-C010-A030	1	0	473
1-1/2X4	VBA20-C015-A040	VBA30-C015-A040	1	0	473
2X4	VBA20-C020-A040	VBA30-C020-A040	1	0	473

**Valve Box, with CPVC True Union 2000 Industrial Ball Valve**  
**CPVC Sch 80 x PVC Sch 80**

Size	EPDM	FKM	Std Pk	Mstr Pk	Prod Code
1/2X2	VBA20-C005-B020	VBA30-C005-B020	1	0	473
3/4X3	VBA20-C007-B030	VBA30-C007-B030	1	5	473
1X3	VBA20-C010-B030	VBA30-C010-B030	1	4	473
1-1/2X4	VBA20-C015-B040	VBA30-C015-B040	1	3	473
2X4	VBA20-C020-B040	VBA30-C020-B040	1	0	473

**Valve Box, with CPVC True Union 2000 Industrial Ball Valve**  
**CPVC Sch 80 x CPVC Sch 80**

Size	EPDM	FKM	Std Pk	Mstr Pk	Prod Code
1/2X2	VBA20-C005-C020	VBA30-C005-C020	1	0	473
3/4X3	VBA20-C007-C030	VBA30-C007-C030	1	0	473
1X3	VBA20-C010-C030	VBA30-C010-C030	1	0	473
1-1/2X4	VBA20-C015-C040	VBA30-C015-C040	1	3	473
2X4	VBA20-C020-C040	VBA30-C020-C040	1	0	473

**Valve Box, with CPVC True Union 2000 Industrial Ball Valve**  
**CPVC Sch 80 x PVC Sch 40 Clear**

Size	EPDM	FKM	Std Pk	Mstr Pk	Prod Code
1/2X2	VBA20-C005-G020	VBA30-C005-G020	1	4	473
3/4X3	VBA20-C007-G030	VBA30-C007-G030	1	0	473
1X3	VBA20-C010-G030	VBA30-C010-G030	1	0	473
1-1/2X4	VBA20-C015-G040	VBA30-C015-G040	1	0	473
2X4	VBA20-C020-G040	VBA30-C020-G040	1	0	473

**Ball Check Valve Box With Valve**



DC Ball Check Valve Boxes are made from a standard Spears® Tee fitting in designated material and Schedule selected, which is fitted with Carrier pipe size Ball Valve and bushed to specified Containment size. Includes Containment Valve Box fitting with threaded Access Plug, True Union 2000 Industrial Ball Check Valve

Double Containment Design & Installation Guide for proper installation.

**General Installation Information:** Ball check valves may be installed in either horizontal or vertical position. A minimum of ten (10) pipe diameters' distance maintained from any pump or other source of turbulence. Check valves MUST be installed with the valve's FLOW arrow pointing in the direction of flow. While Valve Boxes include Centralizers for valve, additional Centralizers are used inside the Containment piping system installed on Carrier pipe and must be ordered separately, according to same Carrier x Containment size and pipe schedule selected.

True Union 2000 Industrial Ball Check Valve Specifications, Sizes 1/2" - 2":

Material:	PVC/CPVC	Maximum Service Temperature
Seats:	PTFE	PVC = 140°F (60°C)
Seals:	EPDM/FKM	CPVC = 200°F (93°C)
PR, Water:	235 psi @ 73°F (23°C), 1/2" - 2"	Temperature/Pressure De-ratings Apply

All Valves assembled with Silicone-Free, Water Soluble Lubricant

**Valve Box, with PVC True Union 2000 Industrial Ball Check Valve**  
**PVC Sch 40 x PVC Sch 40**

Size	EPDM	FKM	Std Pk	Mstr Pk	Prod Code
1/2X2	VBC2-A005-A020	VBC3-A005-A020	1	4	470

**Suitable for Oil-Free air handling to 25 psi, not for distribution of compressed air or gas**

JJ DOWNS INDUSTRIAL PLASTICS INC.

416.236.1884      Toronto, ON      JJDOWNS.COM

international association  
of plastics distribution



**Double Containment Product**  
**Ball Check Valve Box With Valve**

**Ball Check Valve Box With Valve**

**Valve Box, with PVC True Union 2000 Industrial Ball Check Valve**  
 PVC Sch 40 x PVC Sch 40 (continued)

Size	EPDM	FKM	Std Pk	Mstr Pk	Prod Code
3/4X3	VBC2-A007-A030	VBC3-A007-A030	1	4	470
1X3	VBC2-A010-A030	VBC3-A010-A030	1	0	470
1-1/2X4	VBC2-A015-A040	VBC3-A015-A040	1	3	470
2X4	VBC2-A020-A040	VBC3-A020-A040	1	3	470

**Valve Box, with PVC True Union 2000 Industrial Ball Check Valve**  
 PVC Sch 40 x PVC Sch 40 Clear

Size	EPDM	FKM	Std Pk	Mstr Pk	Prod Code
1/2X2	VBC2-A005-G020	VBC3-A005-G020	1	0	470
3/4X3	VBC2-A007-G030	VBC3-A007-G030	1	4	470
1X3	VBC2-A010-G030	VBC3-A010-G030	1	3	470
1-1/2X4	VBC2-A015-G040	VBC3-A015-G040	1	3	470
2X4	VBC2-A020-G040	VBC3-A020-G040	1	3	470

**Valve Box, with PVC True Union 2000 Industrial Ball Check Valve**  
 PVC Sch 80 x PVC Sch 40

Size	EPDM	FKM	Std Pk	Mstr Pk	Prod Code
1/2X2	VBC2-B005-A020	VBC3-B005-A020	1	4	470
3/4X3	VBC2-B007-A030	VBC3-B007-A030	1	4	470
1X3	VBC2-B010-A030	VBC3-B010-A030	1	3	470
1-1/2X4	VBC2-B015-A040	VBC3-B015-A040	1	3	470
2X4	VBC2-B020-A040	VBC3-B020-A040	1	3	470

**Valve Box, with PVC True Union 2000 Industrial Ball Check Valve**  
 PVC Sch 80 x PVC Sch 40 Clear

Size	EPDM	FKM	Std Pk	Mstr Pk	Prod Code
1/2X2	VBC2-B005-G020	VBC3-B005-G020	1	0	470
3/4X3	VBC2-B007-G030	VBC3-B007-G030	1	4	470
1X3	VBC2-B010-G030	VBC3-B010-G030	1	3	470
1-1/2X4	VBC2-B015-G040	VBC3-B015-G040	1	3	470
2X4	VBC2-B020-G040	VBC3-B020-G040	1	0	470

**Valve Box, with PVC True Union 2000 Industrial Ball Check Valve**  
 PVC Sch 80 x PVC Sch 80

Size	EPDM	FKM	Std Pk	Mstr Pk	Prod Code
1/2X2	VBC2-B005-B020	VBC3-B005-B020	1	0	470
3/4X3	VBC2-B007-B030	VBC3-B007-B030	1	4	470
1X3	VBC2-B010-B030	VBC3-B010-B030	1	3	470
1-1/2X4	VBC2-B015-B040	VBC3-B015-B040	1	3	470
2X4	VBC2-B020-B040	VBC3-B020-B040	1	0	470

**Valve Box, with CPVC True Union 2000 Industrial Ball Check Valve**

CPVC Sch 80 x PVC Sch 40

Size	EPDM	FKM	Std Pk	Mstr Pk	Prod Code
1/2X2	VBC2-C005-A020	VBC3-C005-A020	1	4	473

**Valve Box, with CPVC True Union 2000 Industrial Ball Check Valve**

CPVC Sch 80 x PVC Sch 40 (continued)

Size	EPDM	FKM	Std Pk	Mstr Pk	Prod Code
3/4X3	VBC2-C007-A030	VBC3-C007-A030	1	0	473
1X3	VBC2-C010-A030	VBC3-C010-A030	1	0	473
1-1/2X4	VBC2-C015-A040	VBC3-C015-A040	1	0	473
2X4	VBC2-C020-A040	VBC3-C020-A040	1	0	473

**Valve Box, with CPVC True Union 2000 Industrial Ball Check Valve**

CPVC Sch 80 x PVC Sch 80

Size	EPDM	FKM	Std Pk	Mstr Pk	Prod Code
1/2X2	VBC2-C005-B020	VBC3-C005-B020	1	4	473
3/4X3	VBC2-C007-B030	VBC3-C007-B030	1	4	473
1X3	VBC2-C010-B030	VBC3-C010-B030	1	3	473
1-1/2X4	VBC2-C015-B040	VBC3-C015-B040	1	3	473
2X4	VBC2-C020-B040	VBC3-C020-B040	1	0	473

**Valve Box, with CPVC True Union 2000 Industrial Ball Check Valve**

CPVC Sch 80 x CPVC Sch 80

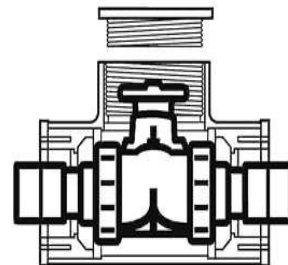
Size	EPDM	FKM	Std Pk	Mstr Pk	Prod Code
1/2X2	VBC2-C005-C020	VBC3-C005-C020	1	0	473
3/4X3	VBC2-C007-C030	VBC3-C007-C030	1	0	473
1X3	VBC2-C010-C030	VBC3-C010-C030	1	4	473
1-1/2X4	VBC2-C015-C040	VBC3-C015-C040	1	3	473
2X4	VBC2-C020-C040	VBC3-C020-C040	1	3	473

**Valve Box, with CPVC True Union 2000 Industrial Ball Check Valve**

CPVC Sch 80 x PVC Sch 40 Clear

Size	EPDM	FKM	Std Pk	Mstr Pk	Prod Code
1/2X2	VBC2-C005-G020	VBC3-C005-G020	1	4	473
3/4X3	VBC2-C007-G030	VBC3-C007-G030	1	4	473
1X3	VBC2-C010-G030	VBC3-C010-G030	1	3	473
1-1/2X4	VBC2-C015-G040	VBC3-C015-G040	1	4	473
2X4	VBC2-C020-G040	VBC3-C020-G040	1	4	473

**Diaphragm Valve Box With Valve**



Suitable for Oil-Free air handling to 25 psi, not for distribution of compressed air or gas

JJ DOWNS INDUSTRIAL PLASTICS INC.

416.236.1884
Toronto, ON
JJDOWNS.COM



**Double Containment Product**  
**Diaphragm Valve Box With Valve**

**Diaphragm Valve Box With Valve**

DC Diaphragm Valve Boxes are made from a standard Spears® Tee fitting in designated material and Schedule selected, which is fitted with Carrier pipe size Diaphragm Valve and bushed to specified Containment size. Includes Containment Valve Box fitting with threaded Access Plug, True Union Diaphragm Valve and Centralizers for positioning valve in box. Carrier valves are equipped with extenders to facilitate cement assembly. See *Double Containment Design & Installation Guide* for proper installation.

**General Installation Information:** Ball check valves may be installed in either horizontal or vertical position. A minimum of ten (10) pipe diameters' distance maintained from any pump or other source of turbulence. Check valves MUST be installed with the valve's FLOW arrow pointing in the direction of flow. While Valve Boxes include Centralizers for valve, additional Centralizers are used inside the Containment piping system installed on Carrier pipe and must be ordered separately, according to same Carrier x Containment size and pipe schedule selected.

True Union Diaphragm Valve Specifications, Sizes 1/2" - 2":

Material:	PVC/CPVC	Maximum Service Temperature
Seals:	EPDM/FKM	PVC = 140°F (60°C)
PR, Water:	235 psi @ 73°F (23°C), 1/2" - 2"	CPVC = 200°F (93°C)
		Temperature/Pressure
		De-ratings Apply

All Valves assembled with Silicone-Free, Water Soluble Lubricant

**Valve Box, with PVC True Union Diaphragm Valve**  
**PVC Sch 40 x PVC Sch 40**

Size	EPDM	FKM	Std Pk	Mstr Pk	Prod Code
1/2X2	VBD20-A005-A020	VBD30-A005-A020	1	0	470
3/4X3	VBD20-A007-A030	VBD30-A007-A030	1	0	470
1X3	VBD20-A010-A030	VBD30-A010-A030	1	0	470
1-1/2X4	VBD20-A015-A040	VBD30-A015-A040	1	0	470
2X4	VBD20-A020-A040	VBD30-A020-A040	1	0	470

**Valve Box, with PVC True Union Diaphragm Valve**  
**PVC Sch 40 x PVC Sch 40 Clear**

Size	EPDM	FKM	Std Pk	Mstr Pk	Prod Code
1/2X2	VBD20-A005-G020	VBD30-A005-G020	1	0	470
3/4X3	VBD20-A007-G030	VBD30-A007-G030	1	0	470
1X3	VBD20-A010-G030	VBD30-A010-G030	1	0	470
1-1/2X4	VBD20-A015-G040	VBD30-A015-G040	1	0	470
2X4	VBD20-A020-G040	VBD30-A020-G040	1	0	470

**Valve Box, with PVC True Union Diaphragm Valve**  
**PVC Sch 80 x PVC Sch 40**

Size	EPDM	FKM	Std Pk	Mstr Pk	Prod Code
1/2X2	VBD20-B005-A020	VBD30-B005-A020	1	0	470
3/4X3	VBD20-B007-A030	VBD30-B007-A030	1	0	470
1X3	VBD20-B010-A030	VBD30-B010-A030	1	0	470
1-1/2X4	VBD20-B015-A040	VBD30-B015-A040	1	0	470
2X4	VBD20-B020-A040	VBD30-B020-A040	1	0	470

**Valve Box, with PVC True Union Diaphragm Valve**  
**PVC Sch 80 x PVC Sch 40 Clear**

Size	EPDM	FKM	Std Pk	Mstr Pk	Prod Code
1/2X2	VBD20-B005-G020	VBD30-B005-G020	1	0	470
3/4X3	VBD20-B007-G030	VBD30-B007-G030	1	0	470
1X3	VBD20-B010-G030	VBD30-B010-G030	1	0	470
1-1/2X4	VBD20-B015-G040	VBD30-B015-G040	1	0	470
2X4	VBD20-B020-G040	VBD30-B020-G040	1	0	470

**Valve Box, with PVC True Union Diaphragm Valve**  
**PVC Sch 80 x PVC Sch 80**

Size	EPDM	FKM	Std Pk	Mstr Pk	Prod Code
1/2X2	VBD20-B005-B020	VBD30-B005-B020	1	0	470
3/4X3	VBD20-B007-B030	VBD30-B007-B030	1	0	470
1X3	VBD20-B010-B030	VBD30-B010-B030	1	0	470
1-1/2X4	VBD20-B015-B040	VBD30-B015-B040	1	0	470
2X4	VBD20-B020-B040	VBD30-B020-B040	1	0	470

**Valve Box, with CPVC True Union Diaphragm Valve**  
**CPVC Sch 80 x PVC Sch 40**

Size	EPDM	FKM	Std Pk	Mstr Pk	Prod Code
1/2X2	VBD20-C005-A020	VBD30-C005-A020	1	0	470
3/4X3	VBD20-C007-A030	VBD30-C007-A030	1	0	473
1X3	VBD20-C010-A030	VBD30-C010-A030	1	0	473
1-1/2X4	VBD20-C015-A040	VBD30-C015-A040	1	0	473
2X4	VBD20-C020-A040	VBD30-C020-A040	1	0	473

**Valve Box, with CPVC True Union Diaphragm Valve**  
**CPVC Sch 80 x PVC Sch 80**

Size	EPDM	FKM	Std Pk	Mstr Pk	Prod Code
1/2X2	VBD20-C005-B020	VBD30-C005-B020	1	5	473
3/4X3	VBD20-C007-B030	VBD30-C007-B030	1	6	473
1X3	VBD20-C010-B030	VBD30-C010-B030	1	6	473
1-1/2X4	VBD20-C015-B040	VBD30-C015-B040	1	4	473
2X4	VBD20-C020-B040	VBD30-C020-B040	1	0	473

**Valve Box, with CPVC True Union Diaphragm Valve**  
**CPVC Sch 80 x CPVC Sch 80**

Size	EPDM	FKM	Std Pk	Mstr Pk	Prod Code
1/2X2	VBD20-C005-C020	VBD30-C005-C020	1	0	473
3/4X3	VBD20-C007-C030	VBD30-C007-C030	1	0	473
1X3	VBD20-C010-C030	VBD30-C010-C030	1	0	473
1-1/2X4	VBD20-C015-C040	VBD30-C015-C040	1	0	473
2X4	VBD20-C020-C040	VBD30-C020-C040	1	0	473

**Valve Box, with CPVC True Union Diaphragm Valve**  
**CPVC Sch 80 x PVC Sch 40 Clear**

Size	EPDM	FKM	Std Pk	Mstr Pk	Prod Code
1/2X2	VBD20-C005-G020	VBD30-C005-G020	1	0	473
3/4X3	VBD20-C007-G030	VBD30-C007-G030	1	0	473
1X3	VBD20-C010-G030	VBD30-C010-G030	1	0	473
1-1/2X4	VBD20-C015-G040	VBD30-C015-G040	1	0	473
2X4	VBD20-C020-G040	VBD30-C020-G040	1	0	473

**Suitable for Oil-Free air handling to 25 psi, not for distribution of compressed air or gas**

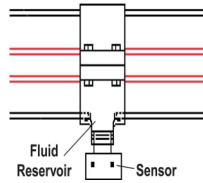
JJ DOWNS INDUSTRIAL PLASTICS INC.

416.236.1884
Toronto, ON
JJDOWNS.COM



**Double C**  
**Clamp-On Saddles for Leak Detection Sensors**

**Clamp-On Saddles for Leak Detection Sensors**



Leak Detection Sensor Saddles are special devices which can be installed on the Containment system where a "low-point" is desired for leak detection apparatus. Spears® Clamp-on style saddles feature an internal O-ring seal to allow easy installation anywhere on the containment piping. Saddles may also be used in Containment high points for air relief or for connection of Containment drainage valves (see note below). See *Double Containment Design & Installation Guide* for proper installation.

Note: Saddles specified in this catalog are for listed containment pipe sizes through 8", with 1/2" or 3/4" NPT connections. For a wide variety of additional pipe and outlet sizes, including solvent weld outlets, please refer to Spears® *PVC/CPVC Clamp-On & Hot-Tap Saddles*.

Clamp-on Saddle Specifications, Containment sizes 2" - 8":

Material: PVC/CPVC  
 Seals: EPDM/FKM Maximum Service Temperature  
 Hardware: Stainless Steel (no fluid contact) PVC = 140°F (60°C)  
 CPVC = 200°F (93°C)  
 Outlet: Special Reinforced (SR) Female Plastic thread Temperature/Pressure De-ratings Apply  
 1/2" or 3/4" NPT (see note below)  
 PR, Water: 235 psi @ 73°F (23°C), 2" - 4"  
 200 psi @ 73°F (23°C)  
 150 psi @ 73°F (23°C), 8"

**PVC White Clamp-On Saddle x SR Thread**

Part Number	Size	Hole Saw Dia	Std Pk	Mstr Ctn	Prod Code
<b>with EPDM O-ring Seal &amp; SS Hardware</b>					
2"-4" 235, 6" 200, 8"-12" 150 psi @ 73°F (23°C)					
467SE-247SR	2X1/2	3/4	1	10	046
467SE-248SR	2X3/4	7/8	1	10	046
467SE-333SR <sup>1</sup>	3X1/2	7/8	1	10	046
467SE-334SR	3X3/4	7/8	1	10	046
467SE-415SR <sup>1</sup>	4X1/2	1-1/8	1	10	046
467SE-416SR <sup>1</sup>	4X3/4	1-1/8	1	10	046
467SE-523SR <sup>1</sup>	6X1/2	1-1/8	1	4	046
467SE-524SR <sup>1</sup>	6X3/4	1-1/8	1	4	046
467SE-573SR <sup>1</sup>	8X1/2	4	1	0	046
467SE-574SR <sup>1</sup>	8X3/4	4	1	0	046

<sup>1</sup> Outlet Sized with Adapter  
 PVC White Saddles with FKM O-ring seals available by special order

**PVC Gray Clamp-On Saddle x SR Thread**

Part Number	Size	Hole Saw Dia	Std Pk	Mstr Ctn	Prod Code
<b>with EPDM O-ring Seal &amp; SS Hardware</b>					
2"-4" 235, 6" 200, 8"-12" 150 psi @ 73°F (23°C)					
867S-247SR	2X1/2	3/4	1	10	086
867S-248SR	2X3/4	7/8	1	10	086

**PVC Gray Clamp-On Saddle x SR Thread (continued)**

Part Number	Size	Hole Saw Dia	Std Pk	Mstr Ctn	Prod Code
<b>with EPDM O-ring Seal &amp; SS Hardware</b>					
867S-333SR <sup>1</sup>	3X1/2	7/8	1	10	086
867S-334SR	3X3/4	7/8	1	10	086
867S-415SR <sup>1</sup>	4X1/2	1-1/8	1	10	086
867S-416SR <sup>1</sup>	4X3/4	1-1/8	1	10	086
867S-523SR <sup>1</sup>	6X1/2	1-1/8	1	4	086
867S-524SR <sup>1</sup>	6X3/4	1-1/8	1	4	086
867S-573SR <sup>1</sup>	8X1/2	4	1	0	086
867S-574SR <sup>1</sup>	8X3/4	4	1	0	086

<sup>1</sup> Outlet sized with Adapter

Part Number	Size	Hole Saw Dia	Std Pk	Mstr Ctn	Prod Code
-------------	------	--------------	--------	----------	-----------

**with FKM O-ring Seal & SS Hardware**

2"-4" 235, 6" 200, 8"-12" 150 psi @ 73°F (23°C)

867SV-247SR	2X1/2	3/4	1	10	086
867SV-248SR	2X3/4	7/8	1	10	086
867SV-333SR <sup>1</sup>	3X1/2	7/8	1	10	086
867SV-334SR	3X3/4	7/8	1	10	086
867SV-415SR <sup>1</sup>	4X1/2	1-1/8	1	10	086
867SV-416SR <sup>1</sup>	4X3/4	1-1/8	1	10	086
867SV-523SR <sup>1</sup>	6X1/2	1-1/8	1	4	086
867SV-524SR <sup>1</sup>	6X3/4	1-1/8	1	4	086
867SV-573SR <sup>1</sup>	8X1/2	4	1	0	086
867SV-574SR <sup>1</sup>	8X3/4	4	1	0	086

<sup>1</sup> Outlet sized with Adapter

**CPVC Gray Clamp-On Saddle x SR Thread**

Part Number	Size	Hole Saw Dia	Std Pk	Mstr Ctn	Prod Code
<b>with EPDM O-ring Seal &amp; SS Hardware</b>					
2"-4" 235, 6" 200, 8"-12" 150 psi @ 73°F (23°C)					
867S-247CSR	2X1/2	3/4	1	10	096
867S-248CSR	2X3/4	7/8	1	10	096
867S-333CSR <sup>1</sup>	3X1/2	7/8	1	10	096
867S-334CSR	3X3/4	7/8	1	10	096
867S-415CSR <sup>1</sup>	4X1/2	1-1/8	1	10	096
867S-416CSR <sup>1</sup>	4X3/4	1-1/8	1	10	096
867S-523CSR <sup>1</sup>	6X1/2	1-1/8	1	4	096
867S-524CSR <sup>1</sup>	6X3/4	1-1/8	1	4	096
867S-573CSR	8X1/2	4	1	0	096
867S-574CSR <sup>1</sup>	8X3/4	4	1	0	096

<sup>1</sup> Outlet sized with Adapter

Part Number	Size	Hole Saw Dia	Std Pk	Mstr Ctn	Prod Code
-------------	------	--------------	--------	----------	-----------

**with FKM O-ring Seal & SS Hardware**

2"-4" 235, 6" 200, 8"-12" 150 psi @ 73°F (23°C)

867SV-247CSR	2X1/2	3/4	1	10	096
867SV-248CSR	2X3/4	7/8	1	10	096
867SV-333CSR <sup>1</sup>	3X1/2	7/8	1	10	096
867SV-334CSR	3X3/4	7/8	1	10	096
867SV-415CSR <sup>1</sup>	4X1/2	1-1/8	1	10	096
867SV-416CSR <sup>1</sup>	4X3/4	1-1/8	1	10	096
867SV-523CSR <sup>1</sup>	6X1/2	1-1/8	1	4	096
867SV-524CSR <sup>1</sup>	6X3/4	1-1/8	1	4	096
867SV-573CSR <sup>1</sup>	8X1/2	4	1	0	096
867SV-574CSR <sup>1</sup>	8X3/4	4	1	0	096

<sup>1</sup> Outlet sized with Adapter

Suitable for Oil-Free air handling to 25 psi, not for distribution of compressed air or gas

JJ DOWNS INDUSTRIAL PLASTICS INC.

416.236.1884

Toronto, ON

JJDOWNS.COM

member  
iapd  
international association  
of plastics distribution