



Schedule 80 CPVC Product  
**Glue-On Saddles**

**Glue-On Saddles**

Part Number	Size	Std Pk	Mstr Ctn	Prod Code
-------------	------	--------	----------	-----------

**Saddle**

**IPS O.D. x Socket Schedule 80**



Non-Pressure Rated

3963-528C	6X2	1	10	099
3963-530C	6X3	1	5	099
3963-532C	6X4	1	8	099
3963-578C	8X2	1	5	099
3963-580C	8X3	1	8	099
3963-582C	8X4	1	5	099
3963-585C	8X6	1	8	099
3963-621C	10X2	1	5	099
3963-623C	10X3	1	8	099
3963-624C	10X4	1	5	099
3963-626C	10X6	1	5	099
3963-628C	10X8	1	5	099
3963-661C	12X2	1	10	099
3963-663C	12X3	1	8	099
3963-664C	12X4	1	8	099
3963-666C	12X6	1	5	099
3963-668C	12X8	1	4	099
3963-670C	12X10	1	4	099
3963-693C	14X3	1	8	099
3963-694C	14X4	1	5	099
3963-696C	14X6	1	10	099
3963-698C	14X8	1	4	099
3963-700C	14X10	1	3	099
3963-702C	14X12	1	4	099
3963-751C	16X2	1	10	099
3963-753C	16X3	1	8	099
3963-754C	16X4	1	10	099
3963-756C	16X6	1	8	099
3963-758C	16X8	1	3	099
3963-760C	16X10	1	0	099
3963-762C	16X12	1	0	099
3963-764C	16X14	1	0	099
3963-781C	18X2	1	10	409
3963-783C	18X3	1	4	099
3963-784C	18X4	1	5	099
3963-786C	18X6	1	5	099
3963-788C	18X8	1	5	099
3963-790C	18X10	1	0	099
3963-792C	18X12	1	0	099
3963-794C	18X14	1	0	099
3963-796C	18X16	1	0	099
3963-811C	20X2	1	12	099
3963-813C	20X3	1	10	099
3963-814C	20X4	1	6	099
3963-816C	20X6	1	0	099
3963-818C	20X8	1	0	099

Part Number	Size	Std Pk	Mstr Ctn	Prod Code
-------------	------	--------	----------	-----------

**Saddle (continued)**

**IPS O.D. x Socket Schedule 80**

3963-820C	20X10	1	5	099
3963-822C	20X12	1	0	099
3963-824C	20X14	1	0	099
3963-826C	20X16	1	0	099
3963-828C	20X18	1	0	099
3963-901C	24X2	1	5	099
3963-903C	24X3	1	5	099
3963-904C	24X4	1	5	099
3963-906C	24X6	1	5	099
3963-908C	24X8	1	5	099
3963-910C	24X10	1	5	099
3963-912C	24X12	1	0	099
3963-914C	24X14	1	0	099
3963-916C	24X16	1	0	099
3963-918C	24X18	1	0	099
3963-920C	24X20	1	0	099

**Stub Saddle**

**IPS O.D. x Socket Schedule 80**



Non-Pressure Rated

3965-528C	6X2	1	8	099
3965-530C	6X3	1	3	099
3965-532C	6X4	1	5	099
3965-578C	8X2	1	5	099
3965-580C	8X3	1	4	099
3965-582C	8X4	1	5	099
3965-585C	8X6	1	4	099
3965-621C	10X2	1	6	099
3965-623C	10X3	1	5	099
3965-624C	10X4	1	4	099
3965-626C	10X6	1	4	099
3965-628C	10X8	1	2	099
3965-661C	12X2	1	5	099
3965-663C	12X3	1	4	099
3965-664C	12X4	1	2	099
3965-666C	12X6	1	2	099
3965-668C	12X8	1	2	099
3965-670C	12X10	1	0	099
3965-691C	14X2	1	6	099
3965-693C	14X3	1	0	099
3965-694C	14X4	1	5	099
3965-696C	14X6	1	2	099
3965-700C	14X10	1	0	099
3965-702C	14X12	1	0	099
3965-751C	16X2	1	5	099
3965-753C	16X3	1	4	099
3965-754C	16X4	1	3	099
3965-756C	16X6	1	2	099
3965-758C	16X8	1	3	099
3965-760C	16X10	1	0	099

Suitable for Oil-Free air handling to 25 psi, not for distribution of compressed air or gas

JJ DOWNS INDUSTRIAL PLASTICS INC.

416.236.1884
Toronto, ON
JJDOWNS.COM



Schedule 80 CPVC Product  
**Glue-On Saddles & Clamp-On Saddles**

**Glue-On Saddles**

Part Number	Size	Std Pk	Mstr Ctn	Prod Code
<b>Stub Saddle (continued)</b>				
<b>IPS O.D. x Socket Schedule 80</b>				
3965-762C	16X12	1	0	099
3965-764C	16X14	1	0	099
3965-781C	18X2	1	2	099
3965-783C	18X3	1	4	099
3965-784C	18X4	1	2	099
3965-786C	18X6	1	2	099
3965-788C	18X8	1	2	099
3965-790C	18X10	1	0	099
3965-792C	18X12	1	0	099
3965-794C	18X14	1	0	099
3965-796C	18X16	1	0	099
3965-811C	20X2	1	4	099
3965-813C	20X3	1	4	099
3965-814C	20X4	1	4	099
3965-816C	20X6	1	0	099
3965-818C	20X8	1	0	099
3965-820C	20X10	1	0	099
3965-822C	20X12	1	0	099
3965-824C	20X14	1	0	099
3965-826C	20X16	1	0	099
3965-828C	20X18	1	0	099
3965-901C	24X2	1	5	099
3965-903C	24X3	1	2	099
3965-904C	24X4	1	5	099
3965-906C	24X6	1	3	099
3965-908C	24X8	1	0	099
3965-910C	24X10	1	0	099
3965-912C	24X12	1	0	099
3965-914C	24X14	1	0	099
3965-916C	24X16	1	0	099
3965-918C	24X18	1	0	099
3965-920C	24X20	1	0	099

**Clamp-On Saddles**

**Clamp-On Saddle x Socket Single Outlet, CPVC Gray**

**with FKM O-ring Seal & Zinc-Plated Hardware**



2"- 4" 235, 6" 200, 8"-12" 150 psi @ 73°F (23°C)

866V-247C	2X1/2	3/4	1	10	096
866V-248C	2X3/4	7/8	1	10	096
866V-249C	2X1	1-1/8	1	10	096
866V-250C	2X1-1/4	1-1/2	1	10	096
866V-251C	2X1-1/2	1-1/2	1	10	096
866V-291C	2-1/2X1-1/2	1-3/4	1	10	096
866V-333C <sup>1</sup>	3X1/2	7/8	1	10	096
866V-334C	3X3/4	7/8	1	10	096
866V-335C	3X1	1-1/8	1	10	096

Part Number	Size	Hole Saw Dia	Std Pk	Mstr Ctn	Prod Code
-------------	------	--------------	--------	----------	-----------

**Clamp-On Saddle x Socket Single Outlet, CPVC Gray (continued) with FKM O-ring Seal & Zinc-Plated Hardware**

866V-336C <sup>1</sup>	3X1-1/4	2-1/4	1	10	096
866V-337C <sup>1</sup>	3X1-1/2	2-1/4	1	10	096
866V-338C	3X2	2-1/4	1	10	096
866V-415C <sup>1</sup>	4X1/2	1-1/8	1	10	096
866V-416C <sup>1</sup>	4X3/4	1-1/8	1	10	096
866V-417C	4X1	1-1/8	1	8	096
866V-418C <sup>1</sup>	4X1-1/4	1-3/4	1	8	096
866V-419C	4X1-1/2	1-3/4	1	8	096
866V-420C	4X2	2-1/4	1	8	096
866V-421C <sup>1</sup>	4X2-1/2	3	1	4	096
866V-422C	4X3	3	1	4	096
866V-523C <sup>1</sup>	6X1/2	1-1/8	1	4	096
866V-524C <sup>1</sup>	6X3/4	1-1/8	1	4	096
866V-525C	6X1	1-1/8	1	4	096
866V-526C <sup>1</sup>	6X1-1/4	2-1/4	1	4	096
866V-527C <sup>1</sup>	6X1-1/2	2-1/4	1	4	096
866V-528C	6X2	2-1/4	1	4	096
866V-529C <sup>1</sup>	6X2-1/2	3	1	4	096
866V-530C	6X3	3	1	4	096
866V-532C	6X4	4	1	4	096
866V-573C <sup>1</sup>	8X1/2	4	1	0	096
866V-574C <sup>1</sup>	8X3/4	4	1	0	096
866V-575C <sup>1</sup>	8X1	4	1	0	096
866V-576C <sup>1</sup>	8X1-1/4	4	1	0	096
866V-577C <sup>1</sup>	8X1-1/2	4	1	0	096
866V-578C	8X2	4	1	0	096
866V-579C <sup>1</sup>	8X2-1/2	4	1	0	096
866V-580C <sup>1</sup>	8X3	4	1	0	096
866V-582C	8X4	4	1	0	096
866V-585C	8X6	6	1	0	096
866V-624C	10X4	4	1	0	096
866V-626C	10X6	6	1	0	096
866V-664C	12X4	4	1	0	096
866V-666C	12X6	6	1	0	096

<sup>1</sup> Outlet-sized with Bushing

**Clamp-On Saddle x Socket Single Outlet, CPVC Gray**

**with FKM O-ring Seal & SS Hardware**



2"- 4" 235, 6" 200, 8"-12" 150 psi @ 73°F (23°C)

866SV-247C	2X1/2	3/4	1	10	096
866SV-248C	2X3/4	7/8	1	10	096
866SV-249C	2X1	1-1/8	1	10	096
866SV-250C	2X1-1/4	1-1/2	1	10	096
866SV-251C	2X1-1/2	1-1/2	1	10	096
866SV-291C	2-1/2X1-1/2	1-3/4	1	10	096
866SV-333C <sup>1</sup>	3X1/2	7/8	1	10	096
866SV-334C	3X3/4	7/8	1	10	096
866SV-335C	3X1	1-1/8	1	10	096
866SV-336C <sup>1</sup>	3X1-1/4	2-1/4	1	10	096
866SV-337C <sup>1</sup>	3X1-1/2	2-1/4	1	10	096

Suitable for Oil-Free air handling to 25 psi, not for distribution of compressed air or gas

International Association of Plastics Distribution

JJ DOWNS INDUSTRIAL PLASTICS INC.

416.236.1884      Toronto, ON      JJDOWNS.COM



Schedule 80 CPVC Product  
**Clamp-On Saddles**

**Clamp-On Saddles**

Part Number	Size	Hole Saw Dia	Std Pk	Mstr Ctn	Prod Code
<b>Clamp-On Saddle x Socket Single Outlet, CPVC Gray (continued) with FKM O-ring Seal &amp; SS Hardware</b>					
866SV-338C	3X2	2-1/4	1	10	096
866SV-415C <sup>1</sup>	4X1/2	1-1/8	1	10	096
866SV-416C <sup>1</sup>	4X3/4	1-1/8	1	10	096
866SV-417C	4X1	1-1/8	1	8	096
866SV-418C <sup>1</sup>	4X1-1/4	1-3/4	1	8	096
866SV-419C	4X1-1/2	1-3/4	1	8	096
866SV-420C	4X2	2-1/4	1	8	096
866SV-421C <sup>1</sup>	4X2-1/2	3	1	4	096
866SV-422C	4X3	3	1	4	096
866SV-523C <sup>1</sup>	6X1/2	1-1/8	1	4	096
866SV-524C <sup>1</sup>	6X3/4	1-1/8	1	4	096
866SV-525C	6X1	1-1/8	1	4	096
866SV-526C <sup>1</sup>	6X1-1/4	2-1/4	1	4	096
866SV-527C <sup>1</sup>	6X1-1/2	2-1/4	1	4	096
866SV-528C	6X2	2-1/4	1	4	096
866SV-529C <sup>1</sup>	6X2-1/2	3	1	4	096
866SV-530C	6X3	3	1	4	096
866SV-532C	6X4	4	1	4	096
866SV-573C <sup>1</sup>	8X1/2	4	1	0	096
866SV-574C <sup>1</sup>	8X3/4	4	1	0	096
866SV-575C <sup>1</sup>	8 X 1	4	1	0	096
866SV-576C <sup>1</sup>	8X1-1/4	4	1	0	096
866SV-577C <sup>1</sup>	8X1-1/2	4	1	0	096
866SV-578C	8 X 2	4	1	0	096
866SV-579C <sup>1</sup>	8X2-1/2	4	1	0	096
866SV-580C <sup>1</sup>	8X3	4	1	0	096
866SV-582C	8X4	4	1	0	096
866SV-585C	8X6	6	1	0	096
866SV-624C	10X4	4	1	0	096
866SV-626C	10X6	6	1	0	096
866SV-664C	12X4	4	1	0	096
866SV-666C	12X6	6	1	0	096

<sup>1</sup> Outlet-sized with Bushing



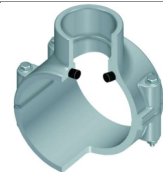
**Clamp-On Saddle x Socket Single Outlet, CPVC Gray**  
with EPDM O-ring Seal & Zinc-Plated Hardware

2"- 4" 235, 6" 200, 8"-12" 150 psi @ 73°F (23°C)

866-247C	2X1/2	3/4	1	10	096
866-248C	2X3/4	7/8	1	10	096
866-249C	2X1	1-1/8	1	10	096
866-250C	2X1-1/4	1-1/2	1	10	096
866-251C	2X1-1/2	1-1/2	1	10	096
866-291C	2-1/2X1-1/2	1-3/4	1	10	096
866-333C <sup>1</sup>	3X1/2	7/8	1	10	096
866-334C	3X3/4	7/8	1	10	096
866-335C	3X1	1-1/8	1	10	096
866-336C <sup>1</sup>	3X1-1/4	2-1/4	1	10	096

Part Number	Size	Hole Saw Dia	Std Pk	Mstr Ctn	Prod Code
<b>Clamp-On Saddle x Socket Single Outlet, CPVC Gray (continued) with EPDM O-ring Seal &amp; Zinc-Plated Hardware</b>					
866-337C <sup>1</sup>	3X1-1/2	2-1/4	1	10	096
866-338C	3X2	2-1/4	1	10	096
866-415C <sup>1</sup>	4X1/2	1-1/8	1	10	096
866-416C <sup>1</sup>	4X3/4	1-1/8	1	10	096
866-417C	4X1	1-1/8	1	8	096
866-418C <sup>1</sup>	4X1-1/4	1-3/4	1	8	096
866-419C	4X1-1/2	1-3/4	1	8	096
866-420C	4X2	2-1/4	1	8	096
866-421C <sup>1</sup>	4X2-1/2	3	1	4	096
866-422C	4X3	3	1	4	096
866-523C <sup>1</sup>	6X1/2	1-1/8	1	4	096
866-524C <sup>1</sup>	6X3/4	1-1/8	1	4	096
866-525C	6X1	1-1/8	1	4	096
866-526C <sup>1</sup>	6X1-1/4	2-1/4	1	4	096
866-527C <sup>1</sup>	6X1-1/2	2-1/4	1	4	096
866-528C	6X2	2-1/4	1	4	096
866-529C <sup>1</sup>	6X2-1/2	3	1	4	096
866-530C	6X3	3	1	4	096
866-532C	6X4	4	1	4	096
866-573C <sup>1</sup>	8X1/2	4	1	0	096
866-574C <sup>1</sup>	8X3/4	4	1	0	096
866-575C <sup>1</sup>	8X1	4	1	0	096
866-576C <sup>1</sup>	8X1-1/4	4	1	0	096
866-577C <sup>1</sup>	8X1-1/2	4	1	0	096
866-578C	8X2	4	1	0	096
866-579C <sup>1</sup>	8X2-1/2	4	1	0	096
866-580C <sup>1</sup>	8X3	4	1	0	096
866-582C	8X4	4	1	0	096
866-585C	8X6	6	1	0	096
866-621C <sup>1</sup>	10X2	4	1	0	096
866-624C	10X4	4	1	0	096
866-626C	10X6	4	1	0	096
866-664C	12X4	4	1	0	096
866-666C	12X6	6	1	0	096

<sup>1</sup> Outlet-sized with Bushing



**Clamp-On Saddle x Socket Single Outlet, CPVC Gray**  
with EPDM O-ring Seal & SS Hardware

2"- 4" 235, 6" 200, 8"-12" 150 psi @ 73°F (23°C)

866S-247C	2X1/2	3/4	1	10	096
866S-248C	2X3/4	7/8	1	10	096
866S-249C	2X1	1-1/8	1	10	096
866S-250C	2X1-1/4	1-1/2	1	10	096
866S-251C	2X1-1/2	1-1/2	1	10	096
866S-291C	2-1/2X1-1/2	1-3/4	1	10	096
866S-333C <sup>1</sup>	3X1/2	7/8	1	10	096
866S-334C	3X3/4	7/8	1	10	096
866S-335C	3X1	1-1/8	1	10	096
866S-336C <sup>1</sup>	3X1-1/4	2-1/4	1	10	096
866S-337C <sup>1</sup>	3X1-1/2	2-1/4	1	10	096

Suitable for Oil-Free air handling to 25 psi, not for distribution of compressed air or gas

JJ DOWNS INDUSTRIAL PLASTICS INC.

416.236.1884
Toronto, ON
JJDOWNS.COM



Schedule 80 CPVC Product  
**Clamp-On Saddles**

**Clamp-On Saddles**

Part Number	Size	Hole Saw Dia	Std Pk	Mstr Ctn	Prod Code
<b>Clamp-On Saddle x Socket Single Outlet, CPVC Gray (continued)</b> <b>with EPDM O-ring Seal &amp; SS Hardware</b>					
866S-338C	3X2	2-1/4	1	10	096
866S-415C <sup>1</sup>	4X1/2	1-1/8	1	10	096
866S-416C <sup>1</sup>	4X3/4	1-1/8	1	10	096
866S-417C	4X1	1-1/8	1	8	096
866S-418C <sup>1</sup>	4X1-1/4	1-3/4	1	8	096
866S-419C	4X1-1/2	1-3/4	1	8	096
866S-420C	4X2	2-1/4	1	8	096
866S-421C <sup>1</sup>	4X2-1/2	3	1	4	096
866S-422C	4X3	3	1	4	096
866S-523C <sup>1</sup>	6X1/2	1-1/8	1	4	096
866S-524C <sup>1</sup>	6X3/4	1-1/8	1	4	096
866S-525C	6X1	1-1/8	1	4	096
866S-526C <sup>1</sup>	6X1-1/4	2-1/4	1	4	096
866S-527C <sup>1</sup>	6X1-1/2	2-1/4	1	4	096
866S-528C	6X2	2-1/4	1	4	096
866S-529C <sup>1</sup>	6X2-1/2	3	1	4	096
866S-530C	6X3	3	1	4	096
866S-532C	6X4	4	1	4	096
866S-573C <sup>1</sup>	8X1/2	4	1	0	096
866S-574C <sup>1</sup>	8X3/4	4	1	0	096
866S-575C <sup>1</sup>	8X1	4	1	0	096
866S-576C <sup>1</sup>	8X1-1/4	4	1	0	096
866S-577C <sup>1</sup>	8X1-1/2	4	1	0	096
866S-578C	8 X 2	4	1	0	096
866S-579C <sup>1</sup>	8X2-1/2	4	1	0	096
866S-580C <sup>1</sup>	8X3	4	1	0	096
866S-582C	8X4	4	1	0	096
866S-585C	8X6	6	1	0	096
866S-624C	10X4	4	1	0	096
866S-626C	10X6	6	1	0	096
866S-664C	12X4	4	1	0	096
866S-666C	12X6	6	1	0	096

<sup>1</sup> Outlet-sized with Bushing



**Clamp-On Saddle x SR Thread Single Outlet, CPVC Gray**

**with FKM O-ring Seal & Zinc-Plated Hardware**

2"- 4" 235, 6" 200, 8"-12" 150 psi @ 73°F (23°C)

867V-247CSR	2X1/2	3/4	1	10	096
867V-248CSR	2X3/4	7/8	1	10	096
867V-249CSR	2X1	1-1/8	1	10	096
867V-250CSR	2X1-1/4	1-1/2	1	10	096
867V-251CSR	2X1-1/2	1-1/2	1	10	096
867V-291CSR	2-1/2X1-1/2	1-3/4	1	10	096
867V-333CSR <sup>1</sup>	3X1/2	7/8	1	10	096
867V-334CSR	3X3/4	7/8	1	10	096
867V-335CSR	3X1	1-1/8	1	10	096
867V-336CSR <sup>1</sup>	3X1-1/4	2-1/4	1	10	096

Part Number	Size	Hole Saw Dia	Std Pk	Mstr Ctn	Prod Code
<b>Clamp-On Saddle x SR Thread Single Outlet, CPVC Gray (continued)</b> <b>with FKM O-ring Seal &amp; Zinc-Plated Hardware</b>					
867V-337CSR <sup>1</sup>	3X1-1/2	2-1/4	1	10	096
867V-338CSR	3X2	2-1/4	1	10	096
867V-415CSR <sup>1</sup>	4X1/2	1-1/8	1	10	096
867V-416CSR <sup>1</sup>	4X3/4	1-1/8	1	10	096
867V-417CSR	4X1	1-1/8	1	8	096
867V-418CSR <sup>1</sup>	4X1-1/4	1-3/4	1	8	096
867V-419CSR	4X1-1/2	1-3/4	1	8	096
867V-420CSR	4X2	2-1/4	1	8	096
867V-421CSR <sup>1</sup>	4X2-1/2	3	1	4	096
867V-422CSR	4X3	3	1	4	096
867V-523CSR <sup>1</sup>	6X1/2	1-1/8	1	4	096
867V-524CSR <sup>1</sup>	6X3/4	1-1/8	1	4	096
867V-525CSR	6X1	1-1/8	1	4	096
867V-526CSR <sup>1</sup>	6X1-1/4	2-1/4	1	4	096
867V-527CSR <sup>1</sup>	6X1-1/2	2-1/4	1	4	096
867V-528CSR	6X2	2-1/4	1	4	096
867V-529CSR <sup>1</sup>	6X2-1/2	3	1	4	096
867V-530CSR	6X3	3	1	4	096
867V-532CSR	6X4	4	1	4	096
867V-573CSR <sup>1</sup>	8X1/2	4	1	0	096
867V-574CSR <sup>1</sup>	8X3/4	4	1	0	096
867V-575CSR <sup>1</sup>	8X1	4	1	0	096
867V-576CSR <sup>1</sup>	8X1-1/4	4	1	0	096
867V-577CSR <sup>1</sup>	8X1-1/2	4	1	0	096
867V-578CSR <sup>1</sup>	8X2	4	1	0	096
867V-579CSR <sup>1</sup>	8X2-1/2	4	1	0	096
867V-580CSR <sup>1</sup>	8X3	4	1	0	096
867V-582CSR	8X4	4	1	0	096
867V-585CSR	8X6	6	1	0	096
867V-624CSR	10X4	4	1	0	096
867V-626CSR	10X6	6	1	0	096
867V-664CSR	12X4	4	1	0	096
867V-666CSR	12X6	6	1	0	096

<sup>1</sup> Outlet-sized with Bushing



**Clamp-On Saddle x SR Thread Single Outlet, CPVC Gray**

**with FKM O-ring Seal & SS Hardware**

2"- 4" 235, 6" 200, 8"-12" 150 psi @ 73°F (23°C)

867SV-245CSR <sup>1</sup>	2X1/4	1-1/8	1	10	096
867SV-247CSR	2X1/2	3/4	1	10	096
867SV-248CSR	2X3/4	7/8	1	10	096
867SV-249CSR	2X1	1-1/8	1	10	096
867SV-250CSR	2X1-1/4	1-1/2	1	10	096
867SV-251CSR	2X1-1/2	1-1/2	1	10	096
867SV-291CSR	2-1/2X1-1/2	1-3/4	1	10	096
867SV-331CSR <sup>1</sup>	3X1/4	1-1/8	1	10	096
867SV-333CSR <sup>1</sup>	3X1/2	7/8	1	10	096
867SV-334CSR	3X3/4	7/8	1	10	096
867SV-335CSR	3X1	1-1/8	1	10	096

Suitable for Oil-Free air handling to 25 psi, not for distribution of compressed air or gas

JJ DOWNS INDUSTRIAL PLASTICS INC.

416.236.1884
Toronto, ON
JJDOWNS.COM



Schedule 80 CPVC Product  
**Clamp-On Saddles**

**Clamp-On Saddles**

Part Number	Size	Hole Saw Dia	Std Pk	Mstr Ctn	Prod Code
-------------	------	--------------	--------	----------	-----------

**Clamp-On Saddle x SR Thread Single Outlet, CPVC Gray**

(continued)

**with FKM O-ring Seal & SS Hardware**

867SV-336CSR <sup>1</sup>	3X1-1/4	2-1/4	1	10	096
867SV-337CSR <sup>1</sup>	3X1-1/2	2-1/4	1	10	096
867SV-338CSR	3X2	2-1/4	1	10	096
867SV-413CSR <sup>1</sup>	4X1/4	1-1/8	1	8	096
867SV-415CSR <sup>1</sup>	4X1/2	1-1/8	1	10	096
867SV-416CSR <sup>1</sup>	4X3/4	1-1/8	1	10	096
867SV-417CSR	4X1	1-1/8	1	8	096
867SV-418CSR <sup>1</sup>	4X1-1/4	1-3/4	1	8	096
867SV-419CSR	4X1-1/2	1-3/4	1	8	096
867SV-420CSR	4X2	2-1/4	1	8	096
867SV-421CSR <sup>1</sup>	4X2-1/2	3	1	4	096
867SV-422CSR	4X3	3	1	4	096
867SV-521CSR <sup>1</sup>	6X1/4	1-1/8	1	4	096
867SV-523CSR <sup>1</sup>	6X1/2	1-1/8	1	4	096
867SV-524CSR <sup>1</sup>	6X3/4	1-1/8	1	4	096
867SV-525CSR <sup>1</sup>	6X1	1-1/8	1	4	096
867SV-526CSR <sup>1</sup>	6X1-1/4	2-1/4	1	4	096
867SV-527CSR <sup>1</sup>	6X1-1/2	2-1/4	1	4	096
867SV-528CSR	6X2	2-1/4	1	4	096
867SV-529CSR <sup>1</sup>	6X2-1/2	3	1	4	096
867SV-530CSR	6X3	3	1	4	096
867SV-532CSR	6X4	4	1	4	096
867SV-571CSR <sup>1</sup>	8X1/4	4	1	0	096
867SV-573CSR <sup>1</sup>	8X1/2	4	1	0	096
867SV-574CSR <sup>1</sup>	8X3/4	4	1	0	096
867SV-575CSR <sup>1</sup>	8X1	4	1	0	096
867SV-576CSR <sup>1</sup>	8X1-1/4	4	1	0	096
867SV-577CSR <sup>1</sup>	8X1-1/2	4	1	0	096
867SV-578CSR <sup>1</sup>	8X2	4	1	0	096
867SV-579CSR <sup>1</sup>	8X2-1/2	4	1	0	096
867SV-580CSR <sup>1</sup>	8X3	4	1	0	096
867SV-582CSR	8X4	4	1	0	096
867SV-585CSR	8X6	6	1	0	096
867SV-624CSR	10X4	4	1	0	096
867SV-626CSR	10X6	6	1	0	096
867SV-664CSR	12X4	4	1	0	096
867SV-666CSR	12X6	6	1	0	096

<sup>1</sup> Outlet-sized with Bushing

**Clamp-On Saddle x SR Thread Single Outlet, CPVC Gray**

**with EPDM O-ring Seal & Zinc-Plated Hardware**

2"- 4" 235, 6" 200, 8"-12" 150 psi @ 73°F (23°C)

867-247CSR	2X1/2	3/4	1	10	096
867-248CSR	2X3/4	7/8	1	10	096
867-249CSR	2X1	1-1/8	1	10	096
867-250CSR	2X1-1/4	1-1/2	1	10	096



Part Number	Size	Hole Saw Dia	Std Pk	Mstr Ctn	Prod Code
-------------	------	--------------	--------	----------	-----------

**Clamp-On Saddle x SR Thread Single Outlet, CPVC Gray**

(continued)

**with EPDM O-ring Seal & Zinc-Plated Hardware**

867-251CSR	2X1-1/2	1-1/2	1	10	096
867-291CSR	2-1/2X1-1/2	1-3/4	1	10	096
867-333CSR <sup>1</sup>	3X1/2	7/8	1	10	096
867-334CSR	3X3/4	7/8	1	10	096
867-335CSR	3X1	1-1/8	1	10	096
867-336CSR <sup>1</sup>	3X1-1/4	2-1/4	1	10	096
867-337CSR <sup>1</sup>	3X1-1/2	2-1/4	1	10	096
867-338CSR	3X2	2-1/4	1	10	096
867-415CSR <sup>1</sup>	4X1/2	1-1/8	1	10	096
867-416CSR <sup>1</sup>	4X3/4	1-1/8	1	10	096
867-417CSR	4X1	1-1/8	1	8	096
867-418CSR <sup>1</sup>	4X1-1/4	1-3/4	1	8	096
867-419CSR	4X1-1/2	1-3/4	1	8	096
867-420CSR	4X2	2-1/4	1	8	096
867-421CSR <sup>1</sup>	4X2-1/2	3	1	4	096
867-422CSR	4X3	3	1	4	096
867-523CSR <sup>1</sup>	6X1/2	1-1/8	1	4	096
867-524CSR <sup>1</sup>	6X3/4	1-1/8	1	4	096
867-525CSR	6X1	1-1/8	1	4	096
867-526CSR <sup>1</sup>	6X1-1/4	2-1/4	1	4	096
867-527CSR <sup>1</sup>	6X1-1/2	2-1/4	1	4	096
867-528CSR	6X2	2-1/4	1	4	096
867-529CSR <sup>1</sup>	6X2-1/2	3	1	4	096
867-530CSR	6X3	3	1	4	096
867-532CSR	6X4	4	1	4	096
867-573CSR <sup>1</sup>	8X1/2	4	1	0	096
867-574CSR	8X3/4	4	1	0	096
867-575CSR <sup>1</sup>	8X1	4	1	0	096
867-576CSR <sup>1</sup>	8X1-1/4	4	1	0	096
867-577CSR <sup>1</sup>	8X1-1/2	4	1	0	096
867-578CSR <sup>1</sup>	8X2	4	1	0	096
867-579CSR <sup>1</sup>	8X2-1/2	4	1	0	096
867-580CSR <sup>1</sup>	8X3	4	1	0	096
867-582CSR	8X4	4	1	0	096
867-585CSR	8X6	6	1	0	096
867-624CSR	10X4	4	1	0	096
867-626CSR	10X6	6	1	0	096
867-664CSR	12X4	4	1	0	096
867-666CSR	12X6	6	1	0	096

<sup>1</sup> Outlet-sized with Bushing

**Clamp-On Saddle x SR Thread Single Outlet, CPVC Gray**

**with EPDM O-ring Seal & SS Hardware**

2"- 4" 235, 6" 200, 8"-12" 150 psi @ 73°F (23°C)

867S-245CSR <sup>1</sup>	2X1/4	1-1/8	1	10	096
867S-247CSR	2X1/2	3/4	1	10	096
867S-248CSR	2X3/4	7/8	1	10	096
867S-249CSR	2X1	1-1/8	1	10	096
867S-250CSR	2X1-1/4	1-1/2	1	10	096



Suitable for Oil-Free air handling to 25 psi, not for distribution of compressed air or gas

JJ DOWNS INDUSTRIAL PLASTICS INC.

416.236.1884      Toronto, ON      JJDOWNS.COM



Schedule 80 CPVC Product  
**Clamp-On Saddles**

**Clamp-On Saddles**

Part Number	Size	Hole Saw Dia	Std Pk	Mstr Ctn	Prod Code
-------------	------	--------------	--------	----------	-----------

**Clamp-On Saddle x SR Thread Single Outlet, CPVC Gray**  
(continued)

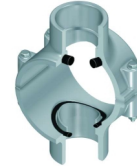
**with EPDM O-ring Seal & SS Hardware**

867S-251CSR	2X1-1/2	1-1/2	1	10	096
867S-291CSR	2-1/2X1-1/2	1-3/4	1	10	096
867S-331CSR <sup>1</sup>	3X1/4	1-1/8	1	10	096
867S-333CSR <sup>1</sup>	3X1/2	7/8	1	10	096
867S-334CSR	3X3/4	7/8	1	10	096
867S-335CSR	3X1	1-1/8	1	10	096
867S-336CSR <sup>1</sup>	3X1-1/4	2-1/4	1	10	096
867S-337CSR <sup>1</sup>	3X1-1/2	2-1/4	1	10	096
867S-338CSR	3X2	2-1/4	1	10	096
867S-413CSR <sup>1</sup>	4X1/4	1-1/8	1	8	096
867S-415CSR <sup>1</sup>	4X1/2	1-1/8	1	10	096
867S-416CSR <sup>1</sup>	4X3/4	1-1/8	1	10	096
867S-417CSR	4X1	1-1/8	1	8	096
867S-418CSR <sup>1</sup>	4X1-1/4	1-3/4	1	8	096
867S-419CSR	4X1-1/2	1-3/4	1	8	096
867S-420CSR	4X2	2-1/4	1	8	096
867S-421CSR <sup>1</sup>	4X2-1/2	3	1	4	096
867S-422CSR	4X3	3	1	4	096
867S-521CSR <sup>1</sup>	6X1/4	1-1/8	1	8	096
867S-523CSR <sup>1</sup>	6X1/2	1-1/8	1	4	096
867S-524CSR <sup>1</sup>	6X3/4	1-1/8	1	4	096
867S-525CSR	6X1	1-1/8	1	4	096
867S-526CSR <sup>1</sup>	6X1-1/4	2-1/4	1	4	096
867S-527CSR <sup>1</sup>	6X1-1/2	2-1/4	1	4	096
867S-528CSR	6X2	2-1/4	1	4	096
867S-529CSR <sup>1</sup>	6X2-1/2	3	1	4	096
867S-530CSR	6X3	3	1	4	096
867S-532CSR	6X4	4	1	4	096
867S-571CSR <sup>1</sup>	8X1/4	4	1	0	096
867S-573CSR	8X1/2	4	1	0	096
867S-574CSR <sup>1</sup>	8X3/4	4	1	0	096
867S-575CSR <sup>1</sup>	8X1	4	1	0	096
867S-576CSR <sup>1</sup>	8X1-1/4	4	1	0	096
867S-577CSR <sup>1</sup>	8X1-1/2	4	1	0	096
867S-578CSR <sup>1</sup>	8X2	4	1	0	096
867S-579CSR <sup>1</sup>	8X2-1/2	4	1	0	096
867S-580CSR <sup>1</sup>	8X3	4	1	0	096
867S-582CSR	8X4	4	1	0	096
867S-585CSR	8X6	6	1	0	096
867S-624CSR	10X4	4	1	0	096
867S-626CSR	10X6	6	1	0	096
867S-664CSR	12X4	4	1	0	096
867S-666CSR	12X6	6	1	0	096

<sup>1</sup> Outlet-sized with Bushing

Part Number	Size	Hole Saw Dia	Std Pk	Mstr Ctn	Prod Code
-------------	------	--------------	--------	----------	-----------

**Clamp-On Saddle x Socket Double Outlet, CPVC Gray**



**with FKM O-ring Seal & Zinc-Plated Hardware**

2"- 4" 235, 6" 200, 8"-12" 150 psi @ 73°F (23°C)

868V-247C	2X1/2	3/4	1	10	096
868V-248C	2X3/4	7/8	1	10	096
868V-249C	2X1	1-1/8	1	10	096
868V-250C	2X1-1/4	1-1/2	1	10	096
868V-251C	2X1-1/2	1-1/2	1	10	096
868V-291C	2-1/2X1-1/2	1-3/4	1	10	096
868V-333C <sup>1</sup>	3X1/2	7/8	1	10	096
868V-334C	3X3/4	7/8	1	10	096
868V-335C	3X1	1-1/8	1	10	096
868V-336C <sup>1</sup>	3X1-1/4	2-1/4	1	10	096
868V-337C <sup>1</sup>	3X1-1/2	2-1/4	1	10	096
868V-338C <sup>1</sup>	3X2	2-1/4	1	10	096
868V-415C <sup>1</sup>	4X1/2	1-1/8	1	10	096
868V-416C <sup>1</sup>	4X3/4	1-1/8	1	10	096
868V-417C	4X1	1-1/8	1	8	096
868V-418C <sup>1</sup>	4X1-1/4	1-3/4	1	8	096
868V-419C	4X1-1/2	1-3/4	1	8	096
868V-420C	4X2	2-1/4	1	8	096
868V-421C <sup>1</sup>	4X2-1/2	3	1	4	096
868V-422C	4X3	3	4	0	096
868V-523C <sup>1</sup>	6X1/2	1-1/8	1	4	096
868V-524C <sup>1</sup>	6X3/4	1-1/8	1	4	096
868V-525C	6X1	1-1/8	1	4	096
868V-526C <sup>1</sup>	6X1-1/4	2-1/4	1	4	096
868V-527C <sup>1</sup>	6X1-1/2	2-1/4	1	4	096
868V-528C	6X2	2-1/4	1	4	096
868V-529C	6X2-1/2	3	1	4	096
868V-530C	6X3	3	1	4	096
868V-532C	6X4	4	1	4	096
868V-573C <sup>1</sup>	8X1/2	4	1	0	096
868V-574C <sup>1</sup>	8X3/4	4	1	0	096
868V-575C <sup>1</sup>	8X1	4	1	0	096
868V-576C <sup>1</sup>	8X1-1/4	4	1	0	096
868V-577C <sup>1</sup>	8X1-1/2	4	1	0	096
868V-578C <sup>1</sup>	8X2	4	1	0	096
868V-579C <sup>1</sup>	8X2-1/2	4	1	0	096
868V-580C <sup>1</sup>	8X3	4	1	0	096
868V-582C	8X4	4	1	0	096
868V-585C	8X6	6	1	0	096
868V-624C	10X4	4	1	0	096
868V-626C	10X6	6	1	0	096
868V-664C	12X4	4	1	0	096
868V-666C	12X6	6	1	0	096

<sup>1</sup> Outlet-sized with Bushing

Suitable for Oil-Free air handling to 25 psi, not for distribution of compressed air or gas

JJ DOWNS INDUSTRIAL PLASTICS INC.

416.236.1884
Toronto, ON
JJDOWNS.COM



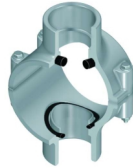
Schedule 80 CPVC Product  
**Clamp-On Saddles**

**Clamp-On Saddles**

Part Number	Size	Hole Saw Dia	Std Pk	Mstr Ctn	Prod Code
-------------	------	--------------	--------	----------	-----------

**Clamp-On Saddle x Socket Double Outlet, CPVC Gray**

**with FKM O-ring Seal & SS Hardware**



2"- 4" 235, 6" 200, 8"-12" 150 psi @ 73°F (23°C)

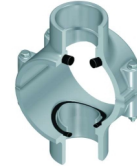
868SV-247C	2X1/2	3/4	1	10	096
868SV-248C	2X3/4	7/8	1	10	096
868SV-249C	2X1	1-1/8	1	10	096
868SV-250C	2X1-1/4	1-1/2	1	10	096
868SV-251C	2X1-1/2	1-1/2	1	10	096
868SV-291C	2-1/2X1-1/2	1-3/4	1	10	096
868SV-333C <sup>1</sup>	3X1/2	7/8	1	10	096
868SV-334C	3X3/4	7/8	1	10	096
868SV-335C	3X1	1-1/8	1	10	096
868SV-336C <sup>1</sup>	3X1-1/4	2-1/4	1	10	096
868SV-337C <sup>1</sup>	3X1-1/2	2-1/4	1	10	096
868SV-338C	3X2	2-1/4	1	10	096
868SV-415C <sup>1</sup>	4X1/2	1-1/8	1	10	096
868SV-416C <sup>1</sup>	4X3/4	1-1/8	1	10	096
868SV-417C	4X1	1-1/8	1	8	096
868SV-418C <sup>1</sup>	4X1-1/4	1-3/4	1	8	096
868SV-419C	4X1-1/2	1-3/4	1	8	096
868SV-420C	4X2	2-1/4	1	8	096
868SV-421C <sup>1</sup>	4X2-1/2	3	1	4	096
868SV-422C	4X3	3	4	0	096
868SV-523C <sup>1</sup>	6X1/2	1-1/8	1	4	096
868SV-524C <sup>1</sup>	6X3/4	1-1/8	1	4	096
868SV-525C	6X1	1-1/8	1	4	096
868SV-526C <sup>1</sup>	6X1-1/4	2-1/4	1	4	096
868SV-527C <sup>1</sup>	6X1-1/2	2-1/4	1	4	096
868SV-528C	6X2	2-1/4	1	4	096
868SV-529C <sup>1</sup>	6X2-1/2	3	1	4	096
868SV-530C	6X3	3	1	4	096
868SV-532C	6X4	4	1	4	096
868SV-573C <sup>1</sup>	8X1/2	4	1	0	096
868SV-574C <sup>1</sup>	8X3/4	4	1	0	096
868SV-575C <sup>1</sup>	8X1	4	1	0	096
868SV-576C <sup>1</sup>	8X1-1/4	4	1	0	096
868SV-577C <sup>1</sup>	8X1-1/2	4	1	0	096
868SV-578C <sup>1</sup>	8X2	4	1	0	096
868SV-579C <sup>1</sup>	8X2-1/2	4	1	0	096
868SV-580C <sup>1</sup>	8X3	4	1	0	096
868SV-582C	8X4	4	1	0	096
868SV-585C	8X6	6	1	0	096
868SV-624C	10X4	4	1	0	096
868SV-626C	10X6	6	1	0	096
868SV-664C	12X4	4	1	0	096
868SV-666C	12X6	6	1	0	096

<sup>1</sup> Outlet-sized with Bushing

Part Number	Size	Hole Saw Dia	Std Pk	Mstr Ctn	Prod Code
-------------	------	--------------	--------	----------	-----------

**Clamp-On Saddle x Socket Double Outlet, CPVC Gray**

**with EPDM O-ring Seal & Zinc-Plated Hardware**



2"- 4" 235, 6" 200, 8"-12" 150 psi @ 73°F (23°C)

868-247C	2X1/2	3/4	1	10	096
868-248C	2X3/4	7/8	1	10	096
868-249C	2X1	1-1/8	1	10	096
868-250C	2X1-1/4	1-1/2	1	10	096
868-251C	2X1-1/2	1-1/2	1	10	096
868-291C	2-1/2X1-1/2	1-3/4	1	10	096
868-333C <sup>1</sup>	3X1/2	7/8	1	10	096
868-334C	3X3/4	7/8	1	10	096
868-335C	3X1	1-1/8	1	10	096
868-336C <sup>1</sup>	3X1-1/4	2-1/4	1	10	096
868-337C <sup>1</sup>	3X1-1/2	2-1/4	1	10	096
868-338C	3X2	2-1/4	1	10	096
868-415C <sup>1</sup>	4X1/2	1-1/8	1	10	096
868-416C <sup>1</sup>	4X3/4	1-1/8	1	10	096
868-417C	4X1	1-1/8	1	8	096
868-418C <sup>1</sup>	4X1-1/4	1-3/4	1	8	096
868-419C	4X1-1/2	1-3/4	1	8	096
868-420C	4X2	2-1/4	1	8	096
868-421C <sup>1</sup>	4X2-1/2	3	1	4	096
868-422C	4X3	3	1	4	096
868-523C <sup>1</sup>	6X1/2	1-1/8	1	4	096
868-524C <sup>1</sup>	6X3/4	1-1/8	1	4	096
868-525C	6X1	1-1/8	1	4	096
868-526C <sup>1</sup>	6X1-1/4	2-1/4	1	4	096
868-527C <sup>1</sup>	6X1-1/2	2-1/4	1	4	096
868-528C	6X2	2-1/4	1	4	096
868-529C <sup>1</sup>	6X2-1/2	3	1	4	096
868-530C	6X3	3	1	4	096
868-532C	6X4	4	1	4	096
868-573C <sup>1</sup>	8X1/2	4	1	0	096
868-574C <sup>1</sup>	8X3/4	4	1	0	096
868-575C <sup>1</sup>	8X1	4	1	0	096
868-576C <sup>1</sup>	8X1-1/4	4	1	0	096
868-577C <sup>1</sup>	8X1-1/2	4	1	0	096
868-578C <sup>1</sup>	8X2	4	1	0	096
868-579C <sup>1</sup>	8X2-1/2	4	1	0	096
868-580C <sup>1</sup>	8X3	4	1	0	096
868-582C	8X4	4	1	0	096
868-585C	8X6	6	1	0	096
868-624C	10X4	4	1	0	096
868-626C	10X6	6	1	0	096
868-664C	12X4	4	1	0	096
868-666C	12X6	6	1	0	096

<sup>1</sup> Outlet-sized with Bushing

Suitable for Oil-Free air handling to 25 psi, not for distribution of compressed air or gas

JJ DOWNS INDUSTRIAL PLASTICS INC.

416.236.1884
Toronto, ON
JJDOWNS.COM



Schedule 80 CPVC Product  
**Clamp-On Saddles**

**Clamp-On Saddles**

Part Number	Size	Hole Saw Dia	Std Pk	Mstr Ctn	Prod Code
-------------	------	--------------	--------	----------	-----------

**Clamp-On Saddle x Socket Double Outlet, CPVC Gray**

**with EPDM O-ring Seal & SS Hardware**



2"- 4" 235, 6" 200, 8"-12" 150 psi @ 73°F (23°C)

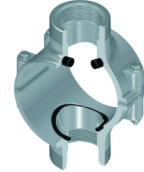
868S-247C	2X1/2	3/4	1	10	096
868S-248C	2X3/4	7/8	1	10	096
868S-249C	2X1	1-1/8	1	10	096
868S-250C	2X1-1/4	1-1/2	1	10	096
868S-251C	2X1-1/2	1-1/2	1	10	096
868S-291C	2-1/2X1-1/2	1-3/4	1	10	096
868S-333C <sup>1</sup>	3X1/2	7/8	1	10	096
868S-334C	3X3/4	7/8	1	10	096
868S-335C	3X1	1-1/8	1	10	096
868S-336C <sup>1</sup>	3X1-1/4	2-1/4	1	10	096
868S-337C <sup>1</sup>	3X1-1/2	2-1/4	1	10	096
868S-338C	3X2	2-1/4	1	10	096
868S-415C <sup>1</sup>	4X1/2	1-1/8	1	10	096
868S-416C <sup>1</sup>	4X3/4	1-1/8	1	10	096
868S-417C	4X1	1-1/8	1	8	096
868S-418C <sup>1</sup>	4X1-1/4	1-3/4	1	8	096
868S-419C	4X1-1/2	1-3/4	1	8	096
868S-420C	4X2	2-1/4	1	8	096
868S-421C <sup>1</sup>	4X2-1/2	3	1	4	096
868S-422C	4X3	3	4	0	096
868S-523C <sup>1</sup>	6X1/2	1-1/8	1	4	096
868S-524C <sup>1</sup>	6X3/4	1-1/8	1	4	096
868S-525C	6X1	1-1/8	1	4	096
868S-526C <sup>1</sup>	6X1-1/4	2-1/4	1	4	096
868S-527C <sup>1</sup>	6X1-1/2	2-1/4	1	4	096
868S-528C	6X2	2-1/4	1	4	096
868S-529C <sup>1</sup>	6X2-1/2	3	1	4	096
868S-530C	6X3	3	1	4	096
868S-532C	6X4	4	1	4	096
868S-573C <sup>1</sup>	8X1/2	4	1	0	096
868S-574C <sup>1</sup>	8X3/4	4	1	0	096
868S-575C <sup>1</sup>	8X1	4	1	0	096
868S-576C <sup>1</sup>	8X1-1/4	4	1	0	096
868S-577C <sup>1</sup>	8X1-1/2	4	1	0	096
868S-578C <sup>1</sup>	8X2	4	1	0	096
868S-579C <sup>1</sup>	8X2-1/2	4	1	0	096
868S-580C <sup>1</sup>	8X3	4	1	0	096
868S-582C	8X4	4	1	0	096
868S-585C	8X6	6	1	0	096
868S-624C	10X4	4	1	0	096
868S-626C	10X6	6	1	0	096
868S-664C	12X4	4	1	0	096
868S-666C	12X6	6	1	0	096

<sup>1</sup> Outlet-sized with Bushing

Part Number	Size	Hole Saw Dia	Std Pk	Mstr Ctn	Prod Code
-------------	------	--------------	--------	----------	-----------

**Clamp-On Saddle x SR Thread Double Outlet, CPVC Gray**

**with FKM O-ring Seal & Zinc-Plated Hardware**



2"- 4" 235, 6" 200, 8"-12" 150 psi @ 73°F (23°C)

869V-247CSR	2X1/2	3/4	1	10	096
869V-248CSR	2X3/4	7/8	1	10	096
869V-249CSR	2X1	1-1/8	1	10	096
869V-250CSR	2X1-1/4	1-1/2	1	10	096
869V-251CSR	2X1-1/2	1-1/2	1	10	096
869V-291CSR	2-1/2X1-1/2	1-3/4	1	10	096
869V-333CSR <sup>1</sup>	3X1/2	7/8	1	10	096
869V-334CSR	3X3/4	7/8	1	10	096
869V-335CSR	3X1	1-1/8	1	10	096
869V-336CSR <sup>1</sup>	3X1-1/4	2-1/4	1	10	096
869V-337CSR <sup>1</sup>	3X1-1/2	2-1/4	1	10	096
869V-338CSR	3X2	2-1/4	1	10	096
869V-415CSR <sup>1</sup>	4X1/2	1-1/8	1	10	096
869V-416CSR <sup>1</sup>	4X3/4	1-1/8	1	10	096
869V-417CSR	4X1	1-1/8	1	8	096
869V-418CSR <sup>1</sup>	4X1-1/4	1-3/4	1	8	096
869V-419CSR	4X1-1/2	1-3/4	1	8	096
869V-420CSR	4X2	2-1/4	1	8	096
869V-421CSR <sup>1</sup>	4X2-1/2	3	1	4	096
869V-422CSR	4X3	3	4	0	096
869V-523CSR <sup>1</sup>	6X1/2	1-1/8	1	4	096
869V-524CSR <sup>1</sup>	6X3/4	1-1/8	1	4	096
869V-525CSR	6X1	1-1/8	1	4	096
869V-526CSR <sup>1</sup>	6X1-1/4	2-1/4	1	4	096
869V-527CSR <sup>1</sup>	6X1-1/2	2-1/4	1	4	096
869V-528CSR	6X2	2-1/4	1	4	096
869V-529CSR <sup>1</sup>	6X2-1/2	3	1	4	096
869V-530CSR	6X3	3	1	4	096
869V-532CSR	6X4	4	1	4	096
869V-573CSR <sup>1</sup>	8X1/2	4	1	0	096
869V-574CSR <sup>1</sup>	8X3/4	4	1	0	096
869V-575CSR <sup>1</sup>	8X1	4	1	0	096
869V-576CSR <sup>1</sup>	8X1-1/4	4	1	0	096
869V-577CSR <sup>1</sup>	8X1-1/2	4	1	0	096
869V-578CSR <sup>1</sup>	8X2	4	1	0	096
869V-579CSR <sup>1</sup>	8X2-1/2	4	1	0	096
869V-580CSR <sup>1</sup>	8X3	4	1	0	096
869V-582CSR	8X4	4	1	0	096
869V-585CSR	8X6	6	1	0	096
869V-624CSR	10X4	4	1	0	096
869V-626CSR	10X6	6	1	0	096
869V-664CSR	12X4	4	1	0	096
869V-666CSR	12X6	6	1	0	096

<sup>1</sup> Outlet-sized with Bushing

Suitable for Oil-Free air handling to 25 psi, not for distribution of compressed air or gas

JJ DOWNS INDUSTRIAL PLASTICS INC.

416.236.1884
Toronto, ON
JJDOWNS.COM





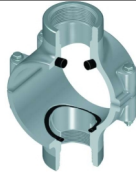
Schedule 80 CPVC Product  
**Clamp-On Saddles**

**Clamp-On Saddles**

Part Number	Size	Hole Saw Dia	Std Pk	Mstr Ctn	Prod Code
-------------	------	--------------	--------	----------	-----------

**Clamp-On Saddle x SR Thread Double Outlet, CPVC Gray**

**with FKM O-ring Seal & SS Hardware**



2"- 4" 235, 6" 200, 8"-12" 150 psi @ 73°F (23°C)

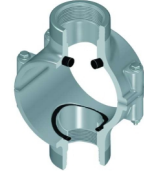
869SV-247CSR	2X1/2	3/4	1	10	096
869SV-248CSR	2X3/4	7/8	1	10	096
869SV-249CSR	2X1	1-1/8	1	10	096
869SV-250CSR	2X1-1/4	1-1/2	1	10	096
869SV-251CSR	2X1-1/2	1-1/2	1	10	096
869SV-291CSR	2-1/2X1-1/2	1-1/2	1	10	096
869SV-333CSR <sup>1</sup>	3X1/2	7/8	1	10	096
869SV-334CSR	3X3/4	7/8	1	10	096
869SV-335CSR	3X1	1-1/8	1	10	096
869SV-336CSR <sup>1</sup>	3X1-1/4	2-1/4	1	10	096
869SV-337CSR <sup>1</sup>	3X1-1/2	2-1/4	1	10	096
869SV-338CSR	3X2	2-1/4	1	10	096
869SV-415CSR <sup>1</sup>	4X1/2	1-1/8	1	10	096
869SV-416CSR <sup>1</sup>	4X3/4	1-1/8	1	10	096
869SV-417CSR	4X1	1-1/8	1	8	096
869SV-418CSR <sup>1</sup>	4X1-1/4	1-3/4	1	8	096
869SV-419CSR	4X1-1/2	1-3/4	1	8	096
869SV-420CSR	4X2	2-1/4	1	8	096
869SV-421CSR <sup>1</sup>	4X2-1/2	3	1	4	096
869SV-422CSR	4X3	3	4	0	096
869SV-523CSR <sup>1</sup>	6X1/2	1-1/8	1	4	096
869SV-524CSR <sup>1</sup>	6X3/4	1-1/8	1	4	096
869SV-525CSR	6X1	1-1/8	1	4	096
869SV-526CSR <sup>1</sup>	6X1-1/4	2-1/4	1	4	096
869SV-527CSR <sup>1</sup>	6X1-1/2	2-1/4	1	4	096
869SV-528CSR	6X2	2-1/4	1	4	096
869SV-529CSR <sup>1</sup>	6X2-1/2	3	1	4	096
869SV-530CSR	6X3	3	1	4	096
869SV-532CSR	6X4	4	1	4	096
869SV-573CSR <sup>1</sup>	8X1/2	4	1	0	096
869SV-574CSR <sup>1</sup>	8X3/4	4	1	0	096
869SV-575CSR <sup>1</sup>	8X1	4	1	0	096
869SV-576CSR <sup>1</sup>	8X1-1/4	4	1	0	096
869SV-577CSR <sup>1</sup>	8X1-1/2	4	1	0	096
869SV-578CSR <sup>1</sup>	8X2	4	1	0	096
869SV-579CSR <sup>1</sup>	8X2-1/2	4	1	0	096
869SV-580CSR <sup>1</sup>	8X3	4	1	0	096
869SV-582CSR	8X4	4	1	0	096
869SV-585CSR	8X6	6	1	0	096
869SV-624CSR	10X4	4	1	0	096
869SV-626CSR	10X6	6	1	0	096
869SV-664CSR	12X4	4	1	0	096
869SV-666CSR	12X6	6	1	0	096

<sup>1</sup> Outlet-sized with Bushing

Part Number	Size	Hole Saw Dia	Std Pk	Mstr Ctn	Prod Code
-------------	------	--------------	--------	----------	-----------

**Clamp-On Saddle x SR Thread Double Outlet, CPVC Gray**

**with EPDM O-ring Seal & Zinc-Plated Hardware**



2"- 4" 235, 6" 200, 8"-12" 150 psi @ 73°F (23°C)

869-247CSR	2X1/2	3/4	1	10	096
869-248CSR	2X3/4	7/8	1	10	096
869-249CSR	2X1	1-1/8	1	10	096
869-250CSR	2X1-1/4	1-1/2	1	10	096
869-251CSR	2X1-1/2	1-1/2	1	10	096
869-291CSR	2-1/2X1-1/2	1-3/4	1	10	096
869-333CSR <sup>1</sup>	3X1/2	7/8	1	10	096
869-334CSR	3X3/4	7/8	1	10	096
869-335CSR	3X1	1-1/8	1	10	096
869-336CSR <sup>1</sup>	3X1-1/4	1-1/8	1	10	096
869-337CSR <sup>1</sup>	3X1-1/2	2-1/4	1	10	096
869-338CSR	3X2	2-1/4	1	10	096
869-415CSR <sup>1</sup>	4X1/2	1-1/8	1	10	096
869-416CSR <sup>1</sup>	4X3/4	1-1/8	1	10	096
869-417CSR	4X1	1-1/8	1	8	096
869-418CSR <sup>1</sup>	4X1-1/4	1-3/4	1	8	096
869-419CSR	4X1-1/2	1-3/4	1	8	096
869-420CSR	4X2	2-1/4	1	8	096
869-421CSR <sup>1</sup>	4X2-1/2	3	1	4	096
869-422CSR	4X3	3	1	4	096
869-523CSR <sup>1</sup>	6X1/2	1-1/8	1	4	096
869-524CSR <sup>1</sup>	6X3/4	1-1/8	1	4	096
869-525CSR	6X1	1-1/8	1	4	096
869-526CSR <sup>1</sup>	6X1-1/4	2-1/4	1	4	096
869-527CSR <sup>1</sup>	6X1-1/2	2-1/4	1	4	096
869-528CSR	6X2	2-1/4	1	4	096
869-529CSR <sup>1</sup>	6X2-1/2	3	1	4	096
869-530CSR	6X3	3	1	4	096
869-532CSR	6X4	4	1	4	096
869-573CSR <sup>1</sup>	8X1/2	4	1	0	096
869-574CSR <sup>1</sup>	8X3/4	4	1	0	096
869-575CSR <sup>1</sup>	8X1	4	1	0	096
869-576CSR <sup>1</sup>	8X1-1/4	4	1	0	096
869-577CSR <sup>1</sup>	8X1-1/2	4	1	0	096
869-578CSR <sup>1</sup>	8X2	4	1	0	096
869-579CSR <sup>1</sup>	8X2-1/2	4	1	0	096
869-580CSR <sup>1</sup>	8X3	4	1	0	096
869-582CSR	8X4	4	1	0	096
869-585CSR	8X6	6	1	0	096
869-624CSR	10X4	4	1	0	096
869-626CSR	10X6	6	1	0	096
869-664CSR	12X4	4	1	0	096
869-666CSR	12X6	6	1	0	096

<sup>1</sup> Outlet-sized with Bushing

Suitable for Oil-Free air handling to 25 psi, not for distribution of compressed air or gas

JJ DOWNS INDUSTRIAL PLASTICS INC.

416.236.1884
Toronto, ON
JJDOWNS.COM



Schedule 80 CPVC Product  
**Clamp-On Saddles & Hot-Tap Saddles**

**Clamp-On Saddles**

Part Number	Size	Hole Saw Dia	Std Pk	Mstr Ctn	Prod Code
-------------	------	--------------	--------	----------	-----------

**Clamp-On Saddle x SR Thread Double Outlet, CPVC Gray**

**with EPDM O-ring Seal & SS Hardware**



2"- 4" 235, 6" 200, 8"-12" 150 psi @ 73°F (23°C)

869S-247CSR	2X1/2	3/4	1	10	096
869S-248CSR	2X3/4	7/8	1	10	096
869S-249CSR	2X1	1-1/8	1	10	096
869S-250CSR	2X1-1/4	1-1/2	1	10	096
869S-251CSR	2X1-1/2	1-1/2	1	10	096
869S-291CSR	2-1/2X1-1/2	1-3/4	1	10	096
869S-333CSR <sup>1</sup>	3X1/2	7/8	1	10	096
869S-334CSR	3X3/4	7/8	1	10	096
869S-335CSR	3X1	1-1/8	1	10	096
869S-336CSR <sup>1</sup>	3X1-1/4	2-1/4	1	10	096
869S-337CSR <sup>1</sup>	3X1-1/2	2-1/4	1	10	096
869S-338CSR	3X2	2-1/4	1	10	096
869S-415CSR <sup>1</sup>	4X1/2	1-1/8	1	10	096
869S-416CSR <sup>1</sup>	4X3/4	1-1/8	1	10	096
869S-417CSR	4X1	1-1/8	1	8	096
869S-418CSR <sup>1</sup>	4X1-1/4	1-3/4	1	8	096
869S-419CSR	4X1-1/2	1-3/4	1	8	096
869S-420CSR	4X2	2-1/4	1	8	096
869S-421CSR <sup>1</sup>	4X2-1/2	3	1	4	096
869S-422CSR	4X3	3	4	0	096
869S-523CSR <sup>1</sup>	6X1/2	1-1/8	1	4	096
869S-524CSR <sup>1</sup>	6X3/4	1-1/8	1	4	096
869S-525CSR	6X1	1-1/8	1	4	096
869S-526CSR <sup>1</sup>	6X1-1/4	2-1/4	1	4	096
869S-527CSR <sup>1</sup>	6X1-1/2	2-1/4	1	4	096
869S-528CSR	6X2	2-1/4	1	4	096
869S-529CSR <sup>1</sup>	6X2-1/2	3	1	4	096
869S-530CSR	6X3	3	1	4	096
869S-532CSR	6X4	4	1	4	096
869S-573CSR <sup>1</sup>	8X1/2	4	1	0	096
869S-574CSR <sup>1</sup>	8X3/4	4	1	0	096
869S-575CSR <sup>1</sup>	8X1	4	1	0	096
869S-576CSR <sup>1</sup>	8X1-1/4	4	1	0	096
869S-577CSR <sup>1</sup>	8X1-1/2	4	1	0	096
869S-578CSR <sup>1</sup>	8X2	4	1	0	096
869S-579CSR <sup>1</sup>	8X2-1/2	4	1	0	096
869S-580CSR <sup>1</sup>	8X3	4	1	0	096
869S-582CSR	8X4	4	1	0	096
869S-585CSR	8X6	6	1	0	096
869S-624CSR	10X4	4	1	0	096
869S-626CSR	10X6	6	1	0	096
869S-664CSR	12X4	4	1	0	096
869S-666CSR	12X6	6	1	0	096

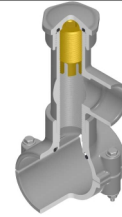
<sup>1</sup> Outlet-sized with Bushing

**Hot-Tap Saddles**

Part Number	Size	Std Pk	Mstr Ctn	Prod Code
-------------	------	--------	----------	-----------

**Hot-Tap Saddle CPVC Gray**

**EPDM Saddle x Socket (Spigot) Zinc Plated Bolts**



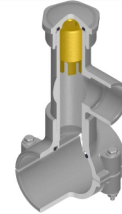
2"- 4" 235, 6" 200, 8" 150 psi @ 73°F (23°C)

HT2-248C	2X3/4 (1)	1	5	050
HT2-251C	2X1-1/2 (2)	1	5	050
HT2-288C	2-1/2X3/4 (1)	1	5	050
HT2-291C	2-1/2X1-1/2 (2)	1	5	050
HT2-334C	3X3/4 (1)	1	5	050
HT2-337C	3X1-1/2 (2)	1	5	050
HT2-416C	4X3/4 (1)	1	5	050
HT2-419C	4X1-1/2 (2)	1	0	050
HT2-524C	6X3/4 (1)	1	5	050
HT2-527C	6X1-1/2 (2)	1	0	050
HT2-574C	8X3/4 (1)	1	5	050
HT2-577C	8X1-1/2 (2)	1	0	050

**Not intended to convey or dispense water for human consumption through drinking or cooking**

**Hot-Tap Saddle CPVC Gray**

**EPDM Saddle x Socket (Spigot) SS316 Bolts**



2"- 4" 235, 6" 200, 8" 150 psi @ 73°F (23°C)

HT2S-248C	2X3/4 (1)	1	5	050
HT2S-251C	2X1-1/2 (2)	1	5	050
HT2S-288C	2-1/2X3/4 (1)	1	5	050
HT2S-291C	2-1/2X1-1/2 (2)	1	5	050
HT2S-334C	3X3/4 (1)	1	5	050
HT2S-337C	3X-1/2 (2)	1	5	050
HT2S-416C	4X3/4 (1)	1	5	050
HT2S-419C	4X1-1/2 (2)	1	0	050
HT2S-524C	6X3/4 (1)	1	5	050
HT2S-527C	6X1-1/2 (2)	1	0	050
HT2S-574C	8X3/4 (1)	1	0	050
HT2S-577C	8X1-1/2 (2)	1	0	050

**Not intended to convey or dispense water for human consumption through drinking or cooking**

Suitable for Oil-Free air handling to 25 psi, not for distribution of compressed air or gas

JJ DOWNS INDUSTRIAL PLASTICS INC.

416.236.1884
Toronto, ON
JJDOWNS.COM



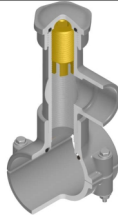
Schedule 80 CPVC Product  
**Hot-Tap Saddles**

**Hot-Tap Saddles**

Part Number	Size	Std Pk	Mstr Ctn	Prod Code
-------------	------	--------	----------	-----------

**Hot-Tap Saddle CPVC Gray**

**FKM Saddle x Soc (Spigot) Zinc Plated Bolts**



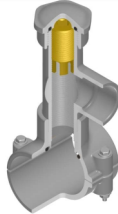
2"- 4" 235, 6" 200, 8" 150 psi @ 73°F (23°C)

HT3-248C	2X3/4 (1)	1	5	050
HT3-251C	2X1-1/2 (2)	1	5	050
HT3-288C	2-1/2X3/4 (1)	1	5	050
HT3-291C	2-1/2X1-1/2 (2)	1	5	050
HT3-334C	3X3/4 (1)	1	5	050
HT3-337C	3X1-1/2 (2)	1	5	050
HT3-416C	4X3/4 (1)	1	5	050
HT3-419C	4X1-1/2 (2)	1	0	050
HT3-524C	6X3/4 (1)	1	5	050
HT3-527C	6X1-1/2 (2)	1	0	050
HT3-574C	8X3/4 (1)	1	0	050
HT3-577C	8X1-1/2 (2)	1	0	050

**Not intended to convey or dispense water for human consumption through drinking or cooking**

**Hot-Tap Saddle CPVC Gray**

**FKM Saddle x Socket (Spigot) SS316 Bolts**



2"- 4" 235, 6" 200, 8" 150 psi @ 73°F (23°C)

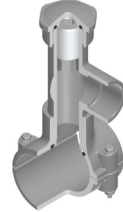
HT3S-248C	2X3/4 (1)	1	5	050
HT3S-251C	2X1-1/2 (2)	1	5	050
HT3S-288C	2-1/2X3/4 (1)	1	5	050
HT3S-291C	2-1/2X1-1/2 (2)	1	5	050
HT3S-334C	3X3/4 (1)	1	5	050
HT3S-337C	3X1-1/2 (2)	1	5	050
HT3S-416C	4X3/4 (1)	1	5	050
HT3S-419C	4X1-1/2 (2)	1	0	050
HT3S-524C	6X3/4 (1)	1	5	050
HT3S-527C	6X1-1/2 (2)	1	0	050
HT3S-574C	8X3/4 (1)	1	0	050
HT3S-577C	8X1-1/2 (2)	1	5	050

**Not intended to convey or dispense water for human consumption through drinking or cooking**

Part Number	Size	Std Pk	Mstr Ctn	Prod Code
-------------	------	--------	----------	-----------

**Hot-Tap Saddle CPVC Gray**

**EPDM with Stainless Steel Cutter & Bolts**



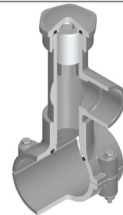
2"- 4" 235, 6" 200, 8" 150 psi @ 73°F (23°C)

HTS2S-248C	2X3/4 (1)	1	5	050
HTS2S-251C	2X1-1/2 (2)	1	5	050
HTS2S-288C	2-1/2X3/4 (1)	1	5	050
HTS2S-291C	2-1/2X1-1/2 (2)	1	5	050
HTS2S-334C	3X3/4 (1)	1	5	050
HTS2S-337C	3X1-1/2 (2)	1	5	050
HTS2S-416C	4X3/4 (1)	1	5	050
HTS2S-419C	4X1-1/2 (2)	1	0	050
HTS2S-524C	6X3/4 (1)	1	5	050
HTS2S-527C	6X1-1/2 (2)	1	0	050
HTS2S-574C	8X3/4 (1)	1	0	050
HTS2S-577C	8X1-1/2 (2)	1	0	050

Lead Free

**Hot-Tap Saddle CPVC Gray**

**FKM with Stainless Steel Cutter & Bolts**



2"- 4" 235, 6" 200, 8" 150 psi @ 73°F (23°C)

HTS3S-248C	2X3/4 (1)	1	5	050
HTS3S-251C	2X1-1/2 (2)	1	5	050
HTS3S-288C	2-1/2X3/4 (1)	1	5	050
HTS3S-291C	2-1/2X1-1/2 (2)	1	5	050
HTS3S-334C	3X3/4 (1)	1	5	050
HTS3S-337C	3X1-1/2 (2)	1	5	050
HTS3S-416C	4X3/4 (1)	1	5	050
HTS3S-419C	4X1-1/2 (2)	1	0	050
HTS3S-524C	6X3/4 (1)	1	5	050
HTS3S-527C	6X1-1/2 (2)	1	0	050
HTS3S-574C	8X3/4 (1)	1	0	050
HTS3S-577C	8X1-1/2 (2)	1	0	050

Lead Free

Suitable for Oil-Free air handling to 25 psi, not for distribution of compressed air or gas

JJ DOWNS INDUSTRIAL PLASTICS INC.

416.236.1884
Toronto, ON
JJDOWNS.COM