



Schedule 80 CPVC Product
GripLoc™ Coupling & GripLoc™ Cap

GripLoc™ Coupling

Part Number	Size	Std Pk	Mstr Ctn	Prod Code
-------------	------	--------	----------	-----------

GripLoc™ Coupling

WARNING: DO NOT INSERT FINGERS
EPDM Gasket
Pressure Rated to 235 psi @ 73°F



Uses No Solvent Cement

GL429-005C	1/2	1	25	132
GL429-007C	3/4	1	36	132
GL429-010C	1	1	20	132
GL429-012C	1-1/4	1	15	132
GL429-015C	1-1/2	1	15	132
GL429-020C	2	1	10	132

GripLoc™ IPS Size Release Tool

For Removal of GripLoc™ Fittings

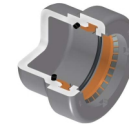


GLIPSRT-005	1/2	1	50	299
GLIPSRT-007	3/4	1	50	299
GLIPSRT-010	1	1	50	299

GripLoc™ Cap

GripLoc™ Cap

WARNING: DO NOT INSERT FINGERS
EPDM Gasket
Pressure Rated to 235 psi @ 73°F



Uses No Solvent Cement

GL447-005C	1/2	25	150	132
GL447-007C	3/4	1	50	132
GL447-010C	1	1	50	132
GL447-012C	1-1/4	1	25	132
GL447-015C	1-1/2	1	25	132
GL447-020C	2	1	25	132

CPVC Flange Cut-in Kit

When planned system changes are needed, system downtime can be a major concern. Spears® Flange Cut-in Kit minimizes downtime for actual cut-in to allow new connection in just minutes. Kit provides all necessary components to create a flanged joint for connection to system alterations in just minutes. Special Flange Hub can be cemented to piping and allowed to cure before shutting down and cutting into system. This allows immediate joining to mating flange (included) that can also be pre-assembled to desired alteration piping.

Kit includes special Split Flange Socket Hub, O-ring Sealed Hub Body, Stainless Steel Clamp, Split Ring, Full-Faced EPDM or FKM Gasket, Mating Flange Hub & Ring, and complete set of Stainless Steel Bolts, Flat Washers and anti-seize Brass Nuts to make the final joint. Available for IPS Pipe Sizes 1-1/2" - 12".

(Continued on next column)

Suitable for Oil-Free air handling to 25 psi, not for distribution of compressed air or gas

JJ DOWNS INDUSTRIAL PLASTICS INC.	international association of plastics distribution
416.236.1884	Toronto, ON JJDOWNS.COM