



Valves Product
PVC Pool Butterfly Valves & Butterfly Valves

PVC Pool Butterfly Valves



Pressure Rating @ 73°F (23°C), Water
1-1/2" - 12" 150 psi

Maximum Service Temperature
PVC = 140°F (60°C)

Temperature/Pressure De-ratings Apply

See Butterfly Valve Accessories & Repair Kits Section for Additional Options and Features

Part Number	Size	Std Pk	Mstr Ctn	Prod Code
-------------	------	--------	----------	-----------

PVC White Butterfly Valve Lever Handle EPDM Seats

682311-015	1-1/2	1	0	260
682311-020	2	1	0	260
682311-025	2-1/2	1	0	260
682311-030	3	1	0	260
682311-040	4	1	0	260
682311-060	6	1	0	260
682311-080	8	1	0	260

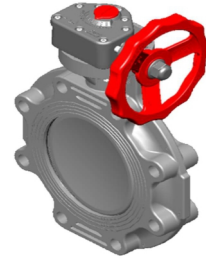
PVC White Butterfly Valve Gear Operated EPDM Seats

682321-015	1-1/2	1	0	261
682321-020	2	1	0	261
682321-025	2-1/2	1	0	261
682321-030	3	1	0	261
682321-040	4	1	0	261
682321-060	6	1	0	261
682321-080	8	1	0	261
682321-100	10	1	0	261
682321-120	12	1	0	261

Butterfly Valves



Lever Handle Style



Gear Operator Style

Pressure Rating @ 73°F (23°C), Water
1-1/2" - 12" 150 psi

Maximum Service Temperature
PVC = 140°F (60°C)
CPVC = 200°F (93°C)

Temperature/Pressure De-ratings Apply

See Butterfly Valve Accessories & Repair Kits Section for Additional Options and Features

PVC

Size	Buna-N	EPDM	FKM	Std Pk	Mstr Pk	Prod Code
------	--------	------	-----	--------	---------	-----------

Lever Handle

1-1/2	721311-015	722311-015	723311-015	1	0	250
2	721311-020	722311-020	723311-020	1	0	250
2-1/2	721311-025	722311-025	723311-025	1	0	250
3	721311-030	722311-030	723311-030	1	0	250
4	721311-040	722311-040	723311-040	1	0	250
6	721311-060	722311-060	723311-060	1	0	250
8	721311-080	722311-080	723311-080	1	0	250

Gear Operator

1-1/2	721321-015	722321-015	723321-015	1	0	250
2	721321-020	722321-020	723321-020	1	0	250
2-1/2	721321-025	722321-025	723321-025	1	0	250
3	721321-030	722321-030	723321-030	1	0	250
4	721321-040	722321-040	723321-040	1	0	250
6	721321-060	722321-060	723321-060	1	0	250
8	721321-080	722321-080	723321-080	1	0	250
10	721321-100	722321-100	723321-100	1	0	250
12	721321-120	722321-120	723321-120	1	0	250

Valve Only

1-1/2	721301-015	722301-015	723301-015	1	0	250
2	721301-020	722301-020	723301-020	1	0	250
2-1/2	721301-025	722301-025	723301-025	1	0	250
3	721301-030	722301-030	723301-030	1	0	250
4	721301-040	722301-040	723301-040	1	0	250
6	721301-060	722301-060	723301-060	1	0	250
8	721301-080	722301-080	723301-080	1	0	250
10	721301-100	722301-100	723301-100	1	0	250
12	721301-120	722301-120	723301-120	1	0	250

Suitable for Oil-Free air handling to 25 psi, not for distribution of compressed air or gas

JJ DOWNS INDUSTRIAL PLASTICS INC.

member
international association
of plastics distributors

416.236.1884
Toronto, ON
JJDOWNS.COM



Valves Product
Butterfly Valves & Lug Insert Butterfly Valves

Butterfly Valves

CPVC

Size	Buna-N	EPDM	FKM	Std Pk	Mstr Pk	Prod Code
Lever Handle						
1-1/2	721311-015C	722311-015C	723311-015C	1	0	252
2	721311-020C	722311-020C	723311-020C	1	0	252
2-1/2	721311-025C	722311-025C	723311-025C	1	0	252
3	721311-030C	722311-030C	723311-030C	1	0	252
4	721311-040C	722311-040C	723311-040C	1	0	252
6	721311-060C	722311-060C	723311-060C	1	0	252
8	721311-080C	722311-080C	723311-080C	1	0	252

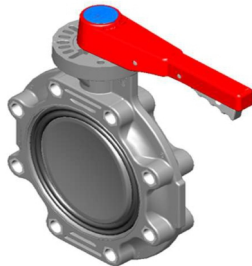
Gear Operator

1-1/2	721321-015C	722321-015C	723321-015C	1	0	252
2	721321-020C	722321-020C	723321-020C	1	0	252
2-1/2	721321-025C	722321-025C	723321-025C	1	0	252
3	721321-030C	722321-030C	723321-030C	1	0	252
4	721321-040C	722321-040C	723321-040C	1	0	252
6	721321-060C	722321-060C	723321-060C	1	0	252
8	721321-080C	722321-080C	723321-080C	1	0	252
10	721321-100C	722321-100C	723321-100C	1	0	252
12	721321-120C	722321-120C	723321-120C	1	0	252

Valve Only

1-1/2	721301-015C	722301-015C	723301-015C	1	0	252
2	721301-020C	722301-020C	723301-020C	1	0	252
2-1/2	721301-025C	722301-025C	723301-025C	1	0	252
3	721301-030C	722301-030C	723301-030C	1	0	252
4	721301-040C	722301-040C	723301-040C	1	0	252
6	721301-060C	722301-060C	723301-060C	1	0	252
8	721301-080C	722301-080C	723301-080C	1	0	252
10	721301-100C	722301-100C	723301-100C	1	0	252
12	721301-120C	722301-120C	723301-120C	1	0	252

Lug Insert Butterfly Valves



Pressure Rating @ 73°F (23°C), Water
1-1/2" - 12" 150 psi
Maximum Service Temperature
PVC = 140°F (60°C)
CPVC = 200°F (93°C)
Temperature/Pressure De-ratings Apply

Suitable for Oil-Free air handling to 25 psi, not for distribution of compressed air or gas

Lug Insert Butterfly Valves

(Continued)

Note: Lug (insert) Valves require attention to flow direction for dead-end service. Flange must be installed on side of valve *opposite* the hex nut recesses for Single-Side installation. See "True Lug Butterfly Valves," where dead-end service is required in either direction.

See Butterfly Valve Accessories & Repair Kits Section for Additional Options and Features. Lug Valves Use Same Accessories, Repair Kits, and Overhaul Kits as Standard Butterfly Valves

PVC - Zinc-Plated Lug Inserts

Size	Buna-N	EPDM	FKM	Std Pk	Mstr Pk	Prod Code
Lever Handle						
1-1/2	721311K-015	722311K-015	723311K-015	1	0	250
2	721311K-020	722311K-020	723311K-020	1	0	250
2-1/2	721311K-025	722311K-025	723311K-025	1	0	250
3	721311K-030	722311K-030	723311K-030	1	0	250
4	721311K-040	722311K-040	723311K-040	1	0	250
6	721311K-060	722311K-060	723311K-060	1	0	250
8	721311K-080	722311K-080	723311K-080	1	0	250

Gear Operator

1-1/2	721321K-015	722321K-015	723321K-015	1	0	250
2	721321K-020	722321K-020	723321K-020	1	0	250
2-1/2	721321K-025	722321K-025	723321K-025	1	0	250
3	721321K-030	722321K-030	723321K-030	1	0	250
4	721321K-040	722321K-040	723321K-040	1	0	250
6	721321K-060	722321K-060	723321K-060	1	0	250
8	721321K-080	722321K-080	723321K-080	1	0	250
10	721321K-100	722321K-100	723321K-100	1	0	250
12	721321K-120	722321K-120	723321K-120	1	0	250

Valve Only

1-1/2	721301K-015	722301K-015	723301K-015	1	0	250
2	721301K-020	722301K-020	723301K-020	1	0	250
2-1/2	721301K-025	722301K-025	723301K-025	1	0	250
3	721301K-030	722301K-030	723301K-030	1	0	250
4	721301K-040	722301K-040	723301K-040	1	0	250
6	721301K-060	722301K-060	723301K-060	1	0	250
8	721301K-080	722301K-080	723301K-080	1	0	250
10	721301K-100	722301K-100	723301K-100	1	0	250
12	721301K-120	722301K-120	723301K-120	1	0	250

CPVC - Zinc-Plated Lug Inserts

Size	Buna-N	EPDM	FKM	Std Pk	Mstr Pk	Prod Code
Lever Handle						
1-1/2	721311K-015C	722311K-015C	723311K-015C	1	0	252
2	721311K-020C	722311K-020C	723311K-020C	1	0	252
2-1/2	721311K-025C	722311K-025C	723311K-025C	1	0	252
3	721311K-030C	722311K-030C	723311K-030C	1	0	252
4	721311K-040C	722311K-040C	723311K-040C	1	0	252
6	721311K-060C	722311K-060C	723311K-060C	1	0	252
8	721311K-080C	722311K-080C	723311K-080C	1	0	252

Gear Operator

1-1/2	721321K-015C	722321K-015C	723321K-015C	1	0	252
2	721321K-020C	722321K-020C	723321K-020C	1	0	252

JJ DOWNS INDUSTRIAL PLASTICS INC.

416.236.1884
Toronto, ON
JJDOWNS.COM



Valves Product
Lug Insert Butterfly Valves & True Lug Butterfly Valves
- Zinc Plated Lugs

Lug Insert Butterfly Valves

CPVC - Zinc-Plated Lug Inserts (continued)

Size	Buna-N	EPDM	FKM	Std Pk	Mstr Pk	Prod Code
Gear Operator						
2-1/2	721321K-025C	722321K-025C	723321K-025C	1	0	252
3	721321K-030C	722321K-030C	723321K-030C	1	0	252
4	721321K-040C	722321K-040C	723321K-040C	1	0	252
6	721321K-060C	722321K-060C	723321K-060C	1	0	252
8	721321K-080C	722321K-080C	723321K-080C	1	0	252
10	721321K-100C	722321K-100C	723321K-100C	1	0	252
12	721321K-120C	722321K-120C	723321K-120C	1	0	252

Valve Only

1-1/2	721301K-015C	722301K-015C	723301K-015C	1	0	252
2	721301K-020C	722301K-020C	723301K-020C	1	0	252
2-1/2	721301K-025C	722301K-025C	723301K-025C	1	0	252
3	721301K-030C	722301K-030C	723301K-030C	1	0	252
4	721301K-040C	722301K-040C	723301K-040C	1	0	252
6	721301K-060C	722301K-060C	723301K-060C	1	0	252
8	721301K-080C	722301K-080C	723301K-080C	1	0	252
10	721301K-100C	722301K-100C	723301K-100C	1	0	252
12	721301K-120C	722301K-120C	723301K-120C	1	0	252

PVC - SS Lug Inserts

Size	Buna-N	EPDM	FKM	Std Pk	Mstr Pk	Prod Code
Lever Handle						
1-1/2	721311G-015	722311G-015	723311G-015	1	0	250
2	721311G-020	722311G-020	723311G-020	1	0	250
2-1/2	721311G-025	722311G-025	723311G-025	1	0	250
3	721311G-030	722311G-030	723311G-030	1	0	250
4	721311G-040	722311G-040	723311G-040	1	0	250
6	721311G-060	722311G-060	723311G-060	1	0	250
8	721311G-080	722311G-080	723311G-080	1	0	250

Gear Operator

1-1/2	721321G-015	722321G-015	723321G-015	1	0	250
2	721321G-020	722321G-020	723321G-020	1	0	250
2-1/2	721321G-025	722321G-025	723321G-025	1	0	250
3	721321G-030	722321G-030	723321G-030	1	0	250
4	721321G-040	722321G-040	723321G-040	1	0	250
6	721321G-060	722321G-060	723321G-060	1	0	250
8	721321G-080	722321G-080	723321G-080	1	0	250
10	721321G-100	722321G-100	723321G-100	1	0	250
12	721321G-120	722321G-120	723321G-120	1	0	250

Valve Only

1-1/2	721301G-015	722301G-015	723301G-015	1	0	250
2	721301G-020	722301G-020	723301G-020	1	0	250
2-1/2	721301G-025	722301G-025	723301G-025	1	0	250
3	721301G-030	722301G-030	723301G-030	1	0	250
4	721301G-040	722301G-040	723301G-040	1	0	250
6	721301G-060	722301G-060	723301G-060	1	0	250
8	721301G-080	722301G-080	723301G-080	1	0	250
10	721301G-100	722301G-100	723301G-100	1	0	250
12	721301G-120	722301G-120	723301G-120	1	0	250

CPVC - SS Lug Inserts

Size	Buna-N	EPDM	FKM	Std Pk	Mstr Pk	Prod Code
Lever Handle						
1-1/2	721311G-015C	722311G-015C	723311G-015C	1	0	252
2	721311G-020C	722311G-020C	723311G-020C	1	0	252
2-1/2	721311G-025C	722311G-025C	723311G-025C	1	0	252
3	721311G-030C	722311G-030C	723311G-030C	1	0	252
4	721311G-040C	722311G-040C	723311G-040C	1	0	252
6	721311G-060C	722311G-060C	723311G-060C	1	0	252
8	721311G-080C	722311G-080C	723311G-080C	1	0	252

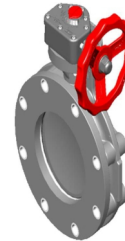
Gear Operator

1-1/2	721321G-015C	722321G-015C	723321G-015C	1	0	252
2	721321G-020C	722321G-020C	723321G-020C	1	0	252
2-1/2	721321G-025C	722321G-025C	723321G-025C	1	0	252
3	721321G-030C	722321G-030C	723321G-030C	1	0	252
4	721321G-040C	722321G-040C	723321G-040C	1	0	252
6	721321G-060C	722321G-060C	723321G-060C	1	0	252
8	721321G-080C	722321G-080C	723321G-080C	1	0	252
10	721321G-100C	722321G-100C	723321G-100C	1	0	252
12	721321G-120C	722321G-120C	723321G-120C	1	0	252

Valve Only

1-1/2	721301G-015C	722301G-015C	723301G-015C	1	0	252
2	721301G-020C	722301G-020C	723301G-020C	1	0	252
2-1/2	721301G-025C	722301G-025C	723301G-025C	1	0	252
3	721301G-030C	722301G-030C	723301G-030C	1	0	252
4	721301G-040C	722301G-040C	723301G-040C	1	0	252
6	721301G-060C	722301G-060C	723301G-060C	1	0	252
8	721301G-080C	722301G-080C	723301G-080C	1	0	252
10	721301G-100C	722301G-100C	723301G-100C	1	0	252
12	721301G-120C	722301G-120C	723301G-120C	1	0	252

True Lug Butterfly Valves - Zinc Plated Lugs



Pressure Rating @ 73°F (23°C), Water
 1-1/2" - 12" 150 psi

Maximum Service Temperature
 PVC = 140°F (60°C)
 CPVC = 200°F (93°C)
 Temperature/Pressure De-ratings Apply

See Butterfly Valve Accessories & Repair Kits Section for Additional Options and Features

PVC - Zinc-Plated Lugs

Size	Buna-N	EPDM	FKM	Std Pk	Mstr Pk	Prod Code
Lever Handle						
1-1/2	721311Z-015	722311Z-015	723311Z-015	1	0	250

Suitable for Oil-Free air handling to 25 psi, not for distribution of compressed air or gas

JJ DOWNS INDUSTRIAL PLASTICS INC.

416.236.1884

Toronto, ON

JJDOWN.COM

international association of plastics distributors



Valves Product
True Lug Butterfly Valves - Zinc Plated Lugs &
True Lug Butterfly Valves - SS Lugs

True Lug Butterfly Valves - Zinc Plated Lugs

PVC - Zinc-Plated Lugs (continued)

Size	Buna-N	EPDM	FKM	Std Pk	Mstr Pk	Prod Code
Lever Handle						
2	721311Z-020	722311Z-020	723311Z-020	1	0	250
2-1/2	721311Z-025	722311Z-025	723311Z-025	1	0	250
3	721311Z-030	722311Z-030	723311Z-030	1	0	250
4	721311Z-040	722311Z-040	723311Z-040	1	0	250
6	721311Z-060	722311Z-060	723311Z-060	1	0	250
8	721311Z-080	722311Z-080	723311Z-080	1	0	250

Gear Operator

1-1/2	721321Z-015	722321Z-015	723321Z-015	1	0	250
2	721321Z-020	722321Z-020	723321Z-020	1	0	250
2-1/2	721321Z-025	722321Z-025	723321Z-025	1	0	250
3	721321Z-030	722321Z-030	723321Z-030	1	0	250
4	721321Z-040	722321Z-040	723321Z-040	1	0	250
6	721321Z-060	722321Z-060	723321Z-060	1	0	250
8	721321Z-080	722321Z-080	723321Z-080	1	0	250
10	721321Z-100	722321Z-100	723321Z-100	1	0	250
12	721321Z-120	722321Z-120	723321Z-120	1	0	250

Valve Only

1-1/2	721301Z-015	722301Z-015	723301Z-015	1	0	250
2	721301Z-020	722301Z-020	723301Z-020	1	0	250
2-1/2	721301Z-025	722301Z-025	723301Z-025	1	0	250
3	721301Z-030	722301Z-030	723301Z-030	1	0	250
4	721301Z-040	722301Z-040	723301Z-040	1	0	250
6	721301Z-060	722301Z-060	723301Z-060	1	0	250
8	721301Z-080	722301Z-080	723301Z-080	1	0	250
10	721301Z-100	722301Z-100	723301Z-100	1	0	250
12	721301Z-120	722301Z-120	723301Z-120	1	0	250

CPVC - Zinc-Plated Lugs

Size	Buna-N	EPDM	FKM	Std Pk	Mstr Pk	Prod Code
Lever Handle						
1-1/2	721311Z-015C	722311Z-015C	723311Z-015C	1	0	252
2	721311Z-020C	722311Z-020C	723311Z-020C	1	0	252
2-1/2	721311Z-025C	722311Z-025C	723311Z-025C	1	0	252
3	721311Z-030C	722311Z-030C	723311Z-030C	1	0	252
4	721311Z-040C	722311Z-040C	723311Z-040C	1	0	252
6	721311Z-060C	722311Z-060C	723311Z-060C	1	0	252
8	721311Z-080C	722311Z-080C	723311Z-080C	1	0	252

Gear Operator

1-1/2	721321Z-015C	722321Z-015C	723321Z-015C	1	0	252
2	721321Z-020C	722321Z-020C	723321Z-020C	1	0	252
2-1/2	721321Z-025C	722321Z-025C	723321Z-025C	1	0	252
3	721321Z-030C	722321Z-030C	723321Z-030C	1	0	252
4	721321Z-040C	722321Z-040C	723321Z-040C	1	0	252
6	721321Z-060C	722321Z-060C	723321Z-060C	1	0	252
8	721321Z-080C	722321Z-080C	723321Z-080C	1	0	252
10	721321Z-100C	722321Z-100C	723321Z-100C	1	0	252
12	721321Z-120C	722321Z-120C	723321Z-120C	1	0	252

Valve Only

1-1/2	721301Z-015C	722301Z-015C	723301Z-015C	1	0	252
2	721301Z-020C	722301Z-020C	723301Z-020C	1	0	252

CPVC - Zinc-Plated Lugs (continued)

Size	Buna-N	EPDM	FKM	Std Pk	Mstr Pk	Prod Code
Valve Only						
2-1/2	721301Z-025C	722301Z-025C	723301Z-025C	1	0	252
3	721301Z-030C	722301Z-030C	723301Z-030C	1	0	252
4	721301Z-040C	722301Z-040C	723301Z-040C	1	0	252
6	721301Z-060C	722301Z-060C	723301Z-060C	1	0	252
8	721301Z-080C	722301Z-080C	723301Z-080C	1	0	252
10	721301Z-100C	722301Z-100C	723301Z-100C	1	0	252
12	721301Z-120C	722301Z-120C	723301Z-120C	1	0	252

True Lug Butterfly Valves - SS Lugs

PVC - Stainless Steel Lugs

Size	Buna-N	EPDM	FKM	Std Pk	Mstr Pk	Prod Code
Lever Handle						
1-1/2	721311L-015	722311L-015	723311L-015	1	0	250
2	721311L-020	722311L-020	723311L-020	1	0	250
2-1/2	721311L-025	722311L-025	723311L-025	1	0	250
3	721311L-030	722311L-030	723311L-030	1	0	250
4	721311L-040	722311L-040	723311L-040	1	0	250
6	721311L-060	722311L-060	723311L-060	1	0	250
8	721311L-080	722311L-080	723311L-080	1	0	250

Gear Operator

1-1/2	721321L-015	722321L-015	723321L-015	1	0	250
2	721321L-020	722321L-020	723321L-020	1	0	250
2-1/2	721321L-025	722321L-025	723321L-025	1	0	250
3	721321L-030	722321L-030	723321L-030	1	0	250
4	721321L-040	722321L-040	723321L-040	1	0	250
6	721321L-060	722321L-060	723321L-060	1	0	250
8	721321L-080	722321L-080	723321L-080	1	0	250
10	721321L-100	722321L-100	723321L-100	1	0	250
12	721321L-120	722321L-120	723321L-120	1	0	250

Valve Only

1-1/2	721301L-015	722301L-015	723301L-015	1	0	250
2	721301L-020	722301L-020	723301L-020	1	0	250
2-1/2	721301L-025	722301L-025	723301L-025	1	0	250
3	721301L-030	722301L-030	723301L-030	1	0	250
4	721301L-040	722301L-040	723301L-040	1	0	250
6	721301L-060	722301L-060	723301L-060	1	0	250
8	721301L-080	722301L-080	723301L-080	1	0	250
10	721301L-100	722301L-100	723301L-100	1	0	250
12	721301L-120	722301L-120	723301L-120	1	0	250

CPVC - Stainless Steel Lugs

Size	Buna-N	EPDM	FKM	Std Pk	Mstr Pk	Prod Code
Lever Handle						
1-1/2	721311L-015C	722311L-015C	723311L-015C	1	0	252
2	721311L-020C	722311L-020C	723311L-020C	1	0	252
2-1/2	721311L-025C	722311L-025C	723311L-025C	1	0	252
3	721311L-030C	722311L-030C	723311L-030C	1	0	252
4	721311L-040C	722311L-040C	723311L-040C	1	0	252
6	721311L-060C	722311L-060C	723311L-060C	1	0	252
8	721311L-080C	722311L-080C	723311L-080C	1	0	252

Gear Operator

1-1/2	721321L-015C	722321L-015C	723321L-015C	1	0	252
2	721321L-020C	722321L-020C	723321L-020C	1	0	252

Suitable for Oil-Free air handling to 25 psi, not for distribution of compressed air or gas

JJ DOWNS INDUSTRIAL PLASTICS INC.

international association of plastics distributors

416.236.1884 Toronto, ON JJDOWN.COM



Valves Product

True Lug Butterfly Valves - SS Lugs & Polypropylene Butterfly Valves & Large Diameter Butterfly Valves

True Lug Butterfly Valves - SS Lugs

CPVC - Stainless Steel Lugs (continued)

Size	Buna-N	EPDM	FKM	Std Pk	Mstr Pk	Prod Code
2-1/2	721321L-025C	722321L-025C	723321L-025C	1	0	252
3	721321L-030C	722321L-030C	723321L-030C	1	0	252
4	721321L-040C	722321L-040C	723321L-040C	1	0	252
6	721321L-060C	722321L-060C	723321L-060C	1	0	252
8	721321L-080C	722321L-080C	723321L-080C	1	0	252
10	721321L-100C	722321L-100C	723321L-100C	1	0	252
12	721321L-120C	722321L-120C	723321L-120C	1	0	252

Gear Operator

Size	Buna-N	EPDM	FKM	Std Pk	Mstr Pk	Prod Code
1-1/2	721301L-015C	722301L-015C	723301L-015C	1	0	252
2	721301L-020C	722301L-020C	723301L-020C	1	0	252
2-1/2	721301L-025C	722301L-025C	723301L-025C	1	0	252
3	721301L-030C	722301L-030C	723301L-030C	1	0	252
4	721301L-040C	722301L-040C	723301L-040C	1	0	252
6	721301L-060C	722301L-060C	723301L-060C	1	0	252
8	721301L-080C	722301L-080C	723301L-080C	1	0	252
10	721301L-100C	722301L-100C	723301L-100C	1	0	252
12	721301L-120C	722301L-120C	723301L-120C	1	0	252

Valve Only

Size	Buna-N	EPDM	FKM	Std Pk	Mstr Pk	Prod Code
1-1/2	721301L-015C	722301L-015C	723301L-015C	1	0	252
2	721301L-020C	722301L-020C	723301L-020C	1	0	252
2-1/2	721301L-025C	722301L-025C	723301L-025C	1	0	252
3	721301L-030C	722301L-030C	723301L-030C	1	0	252
4	721301L-040C	722301L-040C	723301L-040C	1	0	252
6	721301L-060C	722301L-060C	723301L-060C	1	0	252
8	721301L-080C	722301L-080C	723301L-080C	1	0	252
10	721301L-100C	722301L-100C	723301L-100C	1	0	252
12	721301L-120C	722301L-120C	723301L-120C	1	0	252

Polypropylene Butterfly Valves

PP Butterfly Valve w/Lever Handle

Size	Buna-N	EPDM	FKM	Std Pk	Mstr Pk	Prod Code
1-1/2	721311-015P	722311-015P	723311-015P	1	0	256
2	721311-020P	722311-020P	723311-020P	1	0	256
2-1/2	721311-025P	722311-025P	723311-025P	1	0	256
3	721311-030P	722311-030P	723311-030P	1	0	256
4	721311-040P	722311-040P	723311-040P	1	0	256
6	721311-060P	722311-060P	723311-060P	1	0	256
8	721311-080P	722311-080P	723311-080P	1	0	256

PP Butterfly Valve w/Gear Operator

Size	Buna-N	EPDM	FKM	Std Pk	Mstr Pk	Prod Code
2	721321-020P	722321-020P	723321-020P	1	0	256
2-1/2	721321-025P	722321-025P	723321-025P	1	0	256
3	721321-030P	722321-030P	723321-030P	1	0	256
4	721321-040P	722321-040P	723321-040P	1	0	256
6	721321-060P	722321-060P	723321-060P	1	0	256
8	721321-080P	722321-080P	723321-080P	1	0	256
10	721321-100P	722321-100P	723321-100P	1	0	256
12	721321-120P	722321-120P	723321-120P	1	0	256

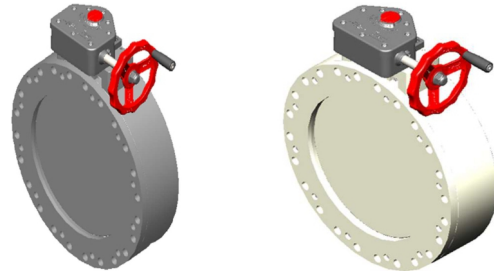
PP Butterfly Valve - Valve Only

Size	Buna-N	EPDM	FKM	Std Pk	Mstr Pk	Prod Code
1-1/2	721301-015P	722301-015P	723301-015P	1	0	256
2	721301-020P	722301-020P	723301-020P	1	0	256
2-1/2	721301-025P	722301-025P	723301-025P	1	0	256
3	721301-030P	722301-030P	723301-030P	1	0	256
4	721301-040P	722301-040P	723301-040P	1	0	256
6	721301-060P	722301-060P	723301-060P	1	0	256
8	721301-080P	722301-080P	723301-080P	1	0	256
10	721301-100P	722301-100P	723301-100P	1	0	256

PP Butterfly Valve - Valve Only (continued)

Size	Buna-N	EPDM	FKM	Std Pk	Mstr Pk	Prod Code
12	721301-120P	722301-120P	723301-120P	1	0	256

Large Diameter Butterfly Valves



Maximum Service Temperature Pressure Rating @ 73°F (23°C), Water

PVC = 140°F (60°C)
CPVC = 200°F (93°C)
PP = 180°F (82°C)

Size	Psi
14	100
16	85
18	70
20	50
24	50

Temperature/Pressure De-ratings Apply

Contact Spears® for Custom Produced Valve Sizes 30" to 60"

PVC - Gear Operator

Size	EPDM	FKM	Std Pk	Mstr Pk	Prod Code
14	722321-140	723321-140	1	0	251
16	722321-160	723321-160	1	0	251

CPVC - Gear Operator

Size	EPDM	FKM	Std Pk	Mstr Pk	Prod Code
14	722321-140C	723321-140C	1	0	253
16	722321-160C	723321-160C	1	0	253

Large Diameter Polypropylene Butterfly Valve - Gear Operator

Size	EPDM	FKM	Std Pk	Mstr Pk	Prod Code
14	722321-140P	723321-140P	1	0	257
18	722321-180P	723321-180P	1	0	257
20	722321-200P	723321-200P	1	0	257
24	722321-240P	723321-240P	1	0	257

Suitable for Oil-Free air handling to 25 psi, not for distribution of compressed air or gas

JJ DOWNS INDUSTRIAL PLASTICS INC.

416.236.1884

Toronto, ON

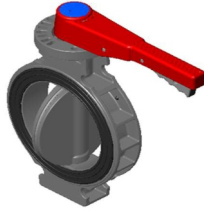
JJDOWN.COM

international association of plastics distributors



Valves Product
Wafer Butterfly Valves & High Purity TFM-Lined Butterfly Valves

Wafer Butterfly Valves



Lever Handle



Gear Operator

Wafer Butterfly Valve laying lengths will directly replace common Cast Iron valves (matches Keystone Model 228 and Bray Series 30 Butterfly Valves).

IMPORTANT NOTE

All PVC and CPVC valves have built-in Santoprene™ Thermoplastic Elastomer (TPE) Flange Gaskets for use with choice of Buna-N, EPDM, or FKM Seats on PVC valves and choice of EPDM or FKM Seats on CPVC valves.

Pressure Rating @ 73°F (23°C), Water
 150 psi

Maximum Service Temperature
 PVC = 140°F (60°C)
 CPVC = 200°F (93°C)

Temperature/Pressure De-ratings Apply

PVC

Size	Buna-N Seat	EPDM Seat	FKM Seat	Std Pk	Mstr Pk	Prod Code
------	-------------	-----------	----------	--------	---------	-----------

Lever Handle

2	751311-020	752311-020	753311-020	1	0	250
2-1/2	751311-025	752311-025	753311-025	1	0	250
3	751311-030	752311-030	753311-030	1	0	250
4	751311-040	752311-040	753311-040	1	0	250
6	751311-060	752311-060	753311-060	1	0	250
8	751311-080	752311-080	753311-080	1	0	250

Gear Operator

2	751321-020	752321-020	753321-020	1	0	250
2-1/2	751321-025	752321-025	753321-025	1	0	250
3	751321-030	752321-030	753321-030	1	0	250
4	751321-040	752321-040	753321-040	1	0	250
6	751321-060	752321-060	753321-060	1	0	250
8	751321-080	752321-080	753321-080	1	0	250
10	751321-100	752321-100	753321-100	1	0	250
12	751321-120	752321-120	753321-120	1	0	250

Valve Only

2	751301-020	752301-020	753301-020	1	0	250
2-1/2	751301-025	752301-025	753301-025	1	0	250
3	751301-030	752301-030	753301-030	1	0	250
4	751301-040	752301-040	753301-040	1	0	250
6	751301-060	752301-060	753301-060	1	0	250
8	751301-080	752301-080	753301-080	1	0	250
10	751301-100	752301-100	753301-100	1	0	250
12	751301-120	752301-120	753301-120	1	0	250

CPVC

Size	EPDM Seat	FKM Seat	Std Pk	Mstr Pk	Prod Code
------	-----------	----------	--------	---------	-----------

Lever Handle

2	752311-020C	753311-020C	1	0	252
2-1/2	752311-025C	753311-025C	1	0	252
3	752311-030C	753311-030C	1	0	252
4	752311-040C	753311-040C	1	0	252
6	752311-060C	753311-060C	1	0	252
8	752311-080C	753311-080C	1	0	252

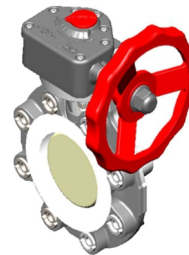
Gear Operator

2	752321-020C	753321-020C	1	0	252
2-1/2	752321-025C	753321-025C	1	0	252
3	752321-030C	753321-030C	1	0	252
4	752321-040C	753321-040C	1	0	252
6	752321-060C	753321-060C	1	0	252
8	752321-080C	753321-080C	1	0	252
10	752321-100C	753321-100C	1	0	252
12	752321-120C	753321-120C	1	0	252

Valve Only

2	752301-020C	753301-020C	1	0	252
2-1/2	752301-025C	753301-025C	1	0	252
3	752301-030C	753301-030C	1	0	252
4	752301-040C	753301-040C	1	0	252
6	752301-060C	753301-060C	1	0	252
8	752301-080C	753301-080C	1	0	252
10	752301-100C	753301-100C	1	0	252
12	752301-120C	753301-120C	1	0	252

High Purity TFM-Lined Butterfly Valves



Pressure Rating @ 73°F (23°C), Water
 2" - 6" 150 psi

Maximum Service Temperature
 200°F (93°C)

TFM-Lined

Part Number	Size	Std Pk	Mstr Ctn	Prod Code
-------------	------	--------	----------	-----------

FKM O-ring Seal

TFM PTFE Lined with backing O-rings, no fluid contact with elastomers or body

253322-020	2	1	0	254
253322-030	3	1	0	254
253322-040	4	1	0	254
253322-060	6	1	0	254

Suitable for Oil-Free air handling to 25 psi, not for distribution of compressed air or gas

JJ DOWNS INDUSTRIAL PLASTICS INC.

416.236.1884

Toronto, ON

international association
 of plastics distribution

JJDOWNS.COM

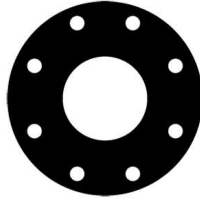


Valves Product
Butterfly Valve Accessories & Repair Kits

Butterfly Valve Accessories & Repair Kits
Flange Gaskets Selection Guide

Order Gaskets & Bolts Kits Separately

- 1/8" Full-Faced design with ANSI Class 150 Bolt Patterns
- Pressure Rated to 150 psi @ 73°F
- Available in Buna-N (Nitrile), EPDM, or FKM



Note: Do not order for Wafer Butterfly Valves. Gasket is Built-in.

Flange Size (in.)	Number of Bolt Holes	Gasket Part Number		
		Buna-N (Nitrile)	EPDM	FKM
1/2	4	GK1-005	GK2-005	GK3-005
3/4	4	GK1-007	GK2-007	GK3-007
1	4	GK1-010	GK2-010	GK3-010
1-1/4	4	GK1-012	GK2-012	GK3-012
1-1/2	4	GK1-015	GK2-015	GK3-015
2	4	GK1-020	GK2-020	GK3-020
2-1/2	4	GK1-025	GK2-025	GK3-025
3	4	GK1-030	GK2-030	GK3-030
4	8	GK1-040	GK2-040	GK3-040
5	8	GK1-050	GK2-050	GK3-050
6	8	GK1-060	GK2-060	GK3-060
8	8	GK1-080	GK2-080	GK3-080
10	12	GK1-100	GK2-100	GK3-100
12	12	GK1-120	GK2-120	GK3-120

Flange Gaskets - Full-Faced EPDM

Part Number	Size	Std Pk	Mstr Ctn	Prod Code
GK2-005	1/2	1	25	017
GK2-007	3/4	1	25	017
GK2-010	1	1	25	017
GK2-012	1-1/4	1	25	017
GK2-015	1-1/2	1	25	017
GK2-020	2	1	25	017
GK2-025	2-1/2	1	25	017
GK2-030	3	1	25	017
GK2-040	4	1	25	017
GK2-050	5	1	25	017
GK2-060	6	1	25	017
GK2-080	8	1	25	017
GK2-100	10	1	25	017
GK2-120	12	1	25	017

Flange Gaskets - Full-Faced FKM

Part Number	Size	Std Pk	Mstr Ctn	Prod Code
GK3-005	1/2	1	25	017
GK3-007	3/4	1	25	017
GK3-010	1	1	25	017
GK3-012	1-1/4	1	5	017
GK3-015	1-1/2	1	25	017
GK3-020	2	1	25	017

Flange Gaskets - Full-Faced FKM (continued)

Part Number	Size	Std Pk	Mstr Ctn	Prod Code
GK3-025	2-1/2	1	25	017
GK3-030	3	1	25	017
GK3-040	4	1	25	017
GK3-050	5	1	25	017
GK3-060	6	1	25	017
GK3-080	8	1	25	017
GK3-100	10	1	25	017
GK3-120	12	1	25	017

Flange Gaskets - Full-Faced Buna-N

Part Number	Size	Std Pk	Mstr Ctn	Prod Code
GK1-005	1/2	1	25	017
GK1-007	3/4	1	25	017
GK1-010	1	1	25	017
GK1-012	1-1/4	1	25	017
GK1-015	1-1/2	1	25	017
GK1-020	2	1	25	017
GK1-025	2-1/2	1	25	017
GK1-030	3	1	25	017
GK1-040	4	1	25	017
GK1-050	5	1	25	017
GK1-060	6	1	25	017
GK1-080	8	1	25	017
GK1-100	10	1	25	017
GK1-120	12	1	25	017

Butterfly Valve Accessories & Repair Kits
Bolt Kit Selection Guide

Kit Contains All Bolts, Nuts, & Flat Washers for Specified Valve Size



- For Connecting Valve Between Two (2) Mating Spears® Flanges
- Pre-coated, Anti-seize Lubricated Bolts
- Available in Zinc Coated Steel, Type 304 Stainless Steel or Type 316

Order Gaskets separately for Standard valves; gaskets are already included with Wafer Butterfly Valves.

(Continued on next page)

Suitable for Oil-Free air handling to 25 psi, not for distribution of compressed air or gas

JJ DOWNS INDUSTRIAL PLASTICS INC.

416.236.1884
Toronto, ON
JJDOWNS.COM



Valves Product
Butterfly Valve Accessories & Repair Kits

Butterfly Valve Accessories & Repair Kits

(Continued)

Standard Butterfly Valve Hardware Kit						
Valve Size (in.)	Bolts Per Kit	Bolt Diameter (in.-TPI)	Bolt Length(in.)	Hardware Kit Part Number		
				Zinc Plate Steel	Type 316 Stainless	Type 304 Stainless
1-1/2	4	1/2-13	4-1/2	BFHK-015	BFHK1-015	BFHK2-015
2	4	5/8-11	5	BFHK-020	BFHK1-020	BFHK2-020
2-1/2 & 3	4	5/8-11	5-1/2	BFHK-030	BFHK1-030	BFHK2-030
4	8	5/8-11	6	BFHK-040	BFHK1-040	BFHK2-040
6	8	3/4-10	7	BFHK-060	BFHK1-060	BFHK2-060
8	8	3/4-10	7-1/2	BFHK-080	BFHK1-080	BFHK2-080
10 & 12	12	7/8-9	8-1/2	BFHK-120	BFHK1-120	BFHK2-120

Wafer Butterfly Valve Hardware Kit						
Valve Size (in.)	Bolts Per Kit	Bolt Diameter (in.-TPI)	Bolt Length(in.)	Hardware Kit Part Number		
				Zinc Plate Steel	Type 316 Stainless	Type 304 Stainless
2	4	5/8-11	4-1/2	WBHK-020	WBHK1-020	WBHK2-020
2-1/2 & 3	4	5/8-11	5	WBHK-030	WBHK1-030	WBHK2-030
4	8	5/8-11	5-1/2	WBHK-040	WBHK1-040	WBHK2-040
6	8	3/4-10	6	WBHK-060	WBHK1-060	WBHK2-060
8	8	3/4-10	7	WBHK-080	WBHK1-080	WBHK2-080
10	12	7/8-9	7-1/2	WBHK-100	WBHK1-100	WBHK2-100
12	12	7/8-9	8	WBHK-120	WBHK1-120	WBHK2-120

Standard Butterfly Valve Bolt Kit - Zinc Plated

Part Number	Size	Std Pk	Mstr Ctn	Prod Code
-------------	------	--------	----------	-----------

For Connection of Valve Between 2-Spears® Flanges
Includes Bolts, Nuts & Flat Washers

BFHK-015	1-1/2	1	10	299
BFHK-020	2	1	10	299
BFHK-030	2-1/2 & 3	1	5	299
BFHK-040	4	1	5	299
BFHK-060	6	1	3	299
BFHK-080	8	1	3	299
BFHK-120	10 & 12	1	0	299

Standard Butterfly Valve Bolt Kit - Type 316 Stainless Steel

Part Number	Size	Std Pk	Mstr Ctn	Prod Code
-------------	------	--------	----------	-----------

For Connection of Valve Between 2-Spears® Flanges
Includes Bolts, Nuts & Flat Washers

BFHK1-015	1-1/2	1	10	299
BFHK1-020	2	1	10	299
BFHK1-030	2-1/2 & 3	1	10	299
BFHK1-040	4	1	5	299
BFHK1-060	6	1	3	299
BFHK1-080	8	1	3	299
BFHK1-120	10 & 12	1	0	299

Standard Butterfly Valve Bolt Kit - Type 304 Stainless Steel

Part Number	Size	Std Pk	Mstr Ctn	Prod Code
-------------	------	--------	----------	-----------

For Connection of Valve Between 2-Spears® Flanges
Includes Bolts, Nuts & Flat Washers

BFHK2-015	1-1/2	1	10	299
BFHK2-020	2	1	10	299
BFHK2-030	2-1/2 & 3	1	10	299
BFHK2-040	4	1	5	299
BFHK2-060	6	1	3	299
BFHK2-080	8	1	3	299
BFHK2-120	10 & 12	1	0	299

True-Lug Butterfly Valve Bolt Kit - Zinc Plated

Part Number	Size	Std Pk	Mstr Ctn	Prod Code
-------------	------	--------	----------	-----------

Connects 1-Side of True-Lug Valve to 1-Spears® Flange
Includes Bolt & Washers

Use 2-Kits For Dual Spears® Flanges

BFHKL-015	1-1/2	1	10	299
BFHKL-020	2	1	10	299
BFHKL-025	2-1/2	1	5	299
BFHKL-030	3	1	5	299
BFHKL-040	4	1	5	299
BFHKL-080	6&8	1	3	299
BFHKL-120	10&12	1	0	299

True-Lug Butterfly Valve Bolt Kit - Type 316 Stainless Steel

Part Number	Size	Std Pk	Mstr Ctn	Prod Code
-------------	------	--------	----------	-----------

Connects 1-Side of True-Lug Valve to 1-Spears® Flange
Includes Bolts & Flat Washers

Use 2-Kits For Dual Spears® Flanges

BFHKL1-015	1-1/2	1	10	299
BFHKL1-020	2	1	10	299
BFHKL1-025	2-1/2	1	10	299
BFHKL1-030	3	1	5	299
BFHKL1-040	4	1	5	299
BFHKL1-080	6&8	1	3	299
BFHKL1-120	10&12	1	0	299

True-Lug Butterfly Valve Bolt Kit - Type 304 Stainless Steel

Part Number	Size	Std Pk	Mstr Ctn	Prod Code
-------------	------	--------	----------	-----------

Connects 1-Side of True-Lug Valve to 1-Spears® Flange
Includes Bolts & Flat Washers

Use 2-Kits For Dual Spears® Flanges

BFHKL2-015	1-1/2	1	10	299
BFHKL2-020	2	1	10	299
BFHKL2-025	2-1/2	1	10	299
BFHKL2-030	3	1	10	299
BFHKL2-040	4	1	5	299
BFHKL2-080	6&8	1	3	299
BFHKL2-120	10&12	1	0	299

Suitable for Oil-Free air handling to 25 psi, not for distribution of compressed air or gas

JJ DOWNS INDUSTRIAL PLASTICS INC.

416.236.1884
Toronto, ON
JJDOWNS.COM



Valves Product
Butterfly Valve Accessories & Repair Kits

Butterfly Valve Accessories & Repair Kits

Wafer Butterfly Valve Bolt Kit - Zinc Plated

Part Number	Size	Std Pk	Mstr Ctn	Prod Code
-------------	------	--------	----------	-----------

For Connection of Valve Between 2-Spears® Flanges

Includes Bolts, Nuts & Flat Washers

Note: Do not order Gaskets, these are included with Wafer Butterfly Valves

WBHK-020	2	1	10	017
WBHK-030	2-1/2 & 3	1	10	017
WBHK-040	4	1	5	017
WBHK-060	6	1	3	017
WBHK-080	8	1	0	017
WBHK-100	10	1	0	017
WBHK-120	12	1	0	017

Wafer Butterfly Valve Bolt Kit - Type 316 Stainless Steel

Part Number	Size	Std Pk	Mstr Ctn	Prod Code
-------------	------	--------	----------	-----------

For Connection of Valve Between 2-Spears® Flanges

Includes Bolts, Nuts & Flat Washers

Note: Do not order Gaskets, these are included with Wafer Butterfly Valves

WBHK1-020	2	1	10	017
WBHK1-030	2-1/2 & 3	1	10	017
WBHK1-040	4	1	5	017
WBHK1-060	6	1	3	017
WBHK1-080	8	1	0	017
WBHK1-100	10	1	0	017
WBHK1-120	12	1	0	017

Wafer Butterfly Valve Bolt Kit - Type 304 Stainless Steel

Part Number	Size	Std Pk	Mstr Ctn	Prod Code
-------------	------	--------	----------	-----------

For Connection of Valve Between 2-Spears® Flanges

Includes Bolts, Nuts & Flat Washers

Note: Do not order Gaskets, these are included with Wafer Butterfly Valves

WBHK2-020	2	1	10	017
WBHK2-030	2-1/2 & 3	1	10	017
WBHK2-040	4	1	5	017
WBHK2-060	6	1	3	017
WBHK2-080	8	1	0	017
WBHK2-100	10	1	0	017
WBHK2-120	12	1	0	017

Gear Operator Kits Submersible



For Wafer Style Butterfly Valves, replace the "SGOP1" with "SGOW1" in the part number (e.g., SGOPW1-020).

Contact Spears® for Kit MSRP and Availability on 14" & Larger Valves

Gear Operator Kits - Submersible

Part Number	Size	Std Pk	Mstr Ctn	Prod Code
-------------	------	--------	----------	-----------

Suitable for Submersible Use

Standard Butterfly Valves

Buna O-rings and Gasket

SGOP1-015	1-1/2	1	4	299
SGOP1-025	2&2-1/2	1	4	299
SGOP1-030	3	1	4	299
SGOP1-040	4	1	4	299
SGOP1-060	6	1	4	299
SGOP1-080	8	1	4	299
SGOP1-100	10	1	0	299
SGOP1-120	12	1	0	299
SGOP1-140	14 & 16	1	0	299

Part Number	Size	Std Pk	Mstr Ctn	Prod Code
-------------	------	--------	----------	-----------

Wafer Butterfly Valves

Buna O-rings and Gasket

SGOPW1-025	2 & 2-1/2	1	2	299
SGOPW1-030	3	1	2	299
SGOPW1-040	4	1	2	299
SGOPW1-060	6	1	2	299
SGOPW1-080	8	1	2	299
SGOPW1-100	10	1	2	299
SGOPW1-120	12	1	2	299

Suitable for Oil-Free air handling to 25 psi, not for distribution of compressed air or gas

JJ DOWNS INDUSTRIAL PLASTICS INC.

416.236.1884
Toronto, ON
JJDOWNS.COM



Valves Product
Butterfly Valve Accessories & Repair Kits

Butterfly Valve Accessories & Repair Kits
Lever Handle



Lever Handle Kits

Part Number	Size	Std Pk	Mstr Ctn	Prod Code
BFH-015	1-1/2	1	10	299
BFH-020	2 OR 2-1/2	1	10	299
BFH-030	3	1	10	299
BFH-040	4	1	10	299
BFH-060	6	1	10	299
BFH-080	8	1	10	299

T-Handle



T-Handle Kits

Part Number	Size	Std Pk	Mstr Ctn	Prod Code
BFTH-015	1-1/2	1	0	299
BFTH-020	2 and 2-1/2	1	10	299
BFTH-030	3	1	10	299
BFTH-040	4	1	10	299

Speed Handle



Speed Handle For Gear Operator

Part Number	Size	Std Pk	Mstr Ctn	Prod Code
SH-120	1-1/2 - 12	10	0	299

Operator Nut



2" Operator Nuts

Part Number	Size	Std Pk	Mstr Ctn	Prod Code
GTN-040	4	10	60	299

Note: Operator Nut is used with Valve Gear Operator. Size 4 fits all Butterfly valve sizes 1-1/2" through 24".

Stem Stop



Gear Operator Positive Stem Stop

Part Number	Size	Std Pk	Mstr Ctn	Prod Code
PSS-120	1-1/2 - 12	50	0	299

Lug Insert Sets



Lug Insert Sets (For PVC/CPVC Standard Valves Only)

Size	Stainless Steel	Zinc Plated	Std Pk	Mstr Pk	Prod Code
1-1/2	LUG1-015	LUG2-015	1	10	299
2 OR 2-1/2	LUG1-020	LUG2-020	1	10	299
3	LUG1-030	LUG2-030	1	10	299
4	LUG1-040	LUG2-040	1	5	299
6 OR 8	LUG1-080	LUG2-080	1	5	299
10 OR 12	LUG1-120	LUG2-120	1	5	299

Suitable for Oil-Free air handling to 25 psi, not for distribution of compressed air or gas

JJ DOWNS INDUSTRIAL PLASTICS INC.

416.236.1884

Toronto, ON

JJDOWNNS.COM

international association
of plastics distribution



Valves Product
Butterfly Valve Accessories & Repair Kits

Butterfly Valve Accessories & Repair Kits
Chainwheel Operators

For Wafer Style Butterfly Valves, replace the "CO" prefix with "COW" in the part number (e.g., COW-020).



Contact Spears® for larger sizes

Valve not included

Order "valve only" (without operator) for use with Chainwheel Operator.

How to Order Chain									
Required chain length is based on chain drop at 3 ft. from floor									
Floor-to-Chainwheel Height	7'	8'	9'	10'	11'	12'	13'	14'	15'
Required Chain Length	10'	12'	14'	16'	18'	20'	22'	24'	26'

Chainwheel Operators

Part Number	Size	Std Pk	Mstr Ctn	Prod Code
CO-020	2	1	2	299
CO-025	2-1/2	1	0	299
CO-030	3	1	2	299
CO-040	4	1	2	299
CO-060	6	1	2	299
CO-080	8	1	2	299
CO-100	10	1	0	299
CO-120	12	1	0	299

Lock-Link Chain for Chainwheel Operators (price per foot)

Part Number	Size	Std Pk	Mstr Ctn	Prod Code
GC-1	HOT-DIP GALVANIZED	1	100	299
SC-1	STAINLESS STEEL	1	0	299

Stem Extensions

Valve not included



Basic Stem Extension height is 24" and is manufactured in standard 6" increments (heights less than 24" have the same MSRP). Intermediate Stem Extension heights are available and are quoted to the next full 6" increment. Stem Extensions over 120" in height are manufactured and shipped in 2-piece sections. Please contact your servicing Spears® Regional Distribution Center.

For Wafer Style Butterfly Valves, replace the "BFSE" prefix with "BFSEW" in the part number (e.g., BFSEW-020-240).

Contact Spears® for MSRP and availability on Stem Extensions for 14" & Larger Butterfly Valves.

Stem Extensions

Part Number	Size	Std Pk	Mstr Ctn	Prod Code
BFSE-015-240	1-1/2X24	1	0	299
BFSE-015-300	1-1/2X30	1	0	299
BFSE-015-360	1-1/2X36	1	0	299
BFSE-015-420	1-1/2X42	1	0	299
BFSE-015-480	1-1/2X48	1	0	299
BFSE-015-540	1-1/2X54	1	0	299
BFSE-015-600	1-1/2X60	1	0	299
BFSE-015-660	1-1/2X66	1	0	299
BFSE-015-720	1-1/2X72	1	0	299
BFSE-015-780	1-1/2X78	1	0	299
BFSE-015-840	1-1/2X84	1	0	299
BFSE-015-900	1-1/2X90	1	0	299
BFSE-015-960	1-1/2X96	1	0	299
BFSE-015-1020	1-1/2X102	1	0	299
BFSE-015-1080	1-1/2X108	1	0	299
BFSE-015-1140	1-1/2X114	1	0	299
BFSE-015-1200	1-1/2X120	1	0	299
BFSE-020-240	2X24	1	0	299
BFSE-020-300	2X30	1	0	299
BFSE-020-360	2X36	1	0	299
BFSE-020-420	2X42	1	0	299
BFSE-020-480	2X48	1	0	299
BFSE-020-540	2X54	1	0	299
BFSE-020-600	2X60	1	0	299
BFSE-020-660	2X66	1	0	299
BFSE-020-720	2X72	1	0	299
BFSE-020-780	2X78	1	0	299
BFSE-020-840	2X84	1	0	299
BFSE-020-900	2X90	1	0	299
BFSE-020-960	2X96	1	0	299

Suitable for Oil-Free air handling to 25 psi, not for distribution of compressed air or gas

JJ DOWNS INDUSTRIAL PLASTICS INC.

416.236.1884 Toronto, ON JJDOWN.COM

Valves Product
Butterfly Valve Accessories & Repair Kits

Butterfly Valve Accessories & Repair Kits

Stem Extensions (continued)

Part Number	Size	Std Pk	Mstr Ctn	Prod Code
BFSE-020-1020	2X102	1	0	299
BFSE-020-1080	2X108	1	0	299
BFSE-020-1140	2X114	1	0	299
BFSE-020-1200	2X120	1	0	299
BFSE-030-240	3X24	1	0	299
BFSE-030-300	3X30	1	0	299
BFSE-030-360	3X36	1	0	299
BFSE-030-420	3X42	1	0	299
BFSE-030-480	3X48	1	0	299
BFSE-030-540	3X54	1	0	299
BFSE-030-600	3X60	1	0	299
BFSE-030-660	3X66	1	0	299
BFSE-030-720	3X72	1	0	299
BFSE-030-780	3X78	1	0	299
BFSE-030-840	3X84	1	0	299
BFSE-030-900	3X90	1	0	299
BFSE-030-960	3X96	1	0	299
BFSE-030-1020	3X102	1	0	299
BFSE-030-1080	3X108	1	0	299
BFSE-030-1140	3X114	1	0	299
BFSE-030-1200	3X120	1	0	299
BFSE-040-240	4X24	1	0	299
BFSE-040-300	4X30	1	0	299
BFSE-040-360	4X36	1	0	299
BFSE-040-420	4X42	1	0	299
BFSE-040-480	4X48	1	0	299
BFSE-040-540	4X54	1	0	299
BFSE-040-600	4X60	1	0	299
BFSE-040-660	4X66	1	0	299
BFSE-040-720	4X72	1	0	299
BFSE-040-780	4X78	1	0	299
BFSE-040-840	4X84	1	0	299
BFSE-040-900	4X90	1	0	299
BFSE-040-960	4X96	1	0	299
BFSE-040-1020	4X102	1	0	299
BFSE-040-1080	4X108	1	0	299
BFSE-040-1140	4X114	1	0	299
BFSE-040-1200	4X120	1	0	299
BFSE-060-240	6X24	1	0	299
BFSE-060-300	6X30	1	0	299
BFSE-060-360	6X36	1	0	299
BFSE-060-420	6X42	1	0	299
BFSE-060-480	6X48	1	0	299
BFSE-060-540	6X54	1	0	299
BFSE-060-600	6X60	1	0	299
BFSE-060-660	6X66	1	0	299
BFSE-060-720	6X72	1	0	299
BFSE-060-780	6X78	1	0	299
BFSE-060-840	6X84	1	0	299
BFSE-060-900	6X90	1	0	299
BFSE-060-960	6X96	1	0	299
BFSE-060-1020	6X102	1	0	299

Stem Extensions (continued)

Part Number	Size	Std Pk	Mstr Ctn	Prod Code
BFSE-060-1080	6X108	1	0	299
BFSE-060-1140	6X114	1	0	299
BFSE-060-1200	6X120	1	0	299
BFSE-080-240	8X24	1	0	299
BFSE-080-300	8X30	1	0	299
BFSE-080-360	8X36	1	0	299
BFSE-080-420	8X42	1	0	299
BFSE-080-480	8X48	1	0	299
BFSE-080-540	8X54	1	0	299
BFSE-080-600	8X60	1	0	299
BFSE-080-660	8X66	1	0	299
BFSE-080-720	8X72	1	0	299
BFSE-080-780	8X78	1	0	299
BFSE-080-840	8X84	1	0	299
BFSE-080-900	8X90	1	0	299
BFSE-080-960	8X96	1	0	299
BFSE-080-1020	8X102	1	0	299
BFSE-080-1080	8X108	1	0	299
BFSE-080-1140	8X114	1	0	299
BFSE-080-1200	8X120	1	0	299
BFSE-100-240	10X24	1	0	299
BFSE-100-300	10X30	1	0	299
BFSE-100-360	10X36	1	0	299
BFSE-100-420	10X42	1	0	299
BFSE-100-480	10X48	1	0	299
BFSE-100-540	10X54	1	0	299
BFSE-100-600	10X60	1	0	299
BFSE-100-660	10X66	1	0	299
BFSE-100-720	10X72	1	0	299
BFSE-100-780	10X78	1	0	299
BFSE-100-840	10X84	1	0	299
BFSE-100-900	10X90	1	0	299
BFSE-100-960	10X96	1	0	299
BFSE-100-1020	10X102	1	0	299
BFSE-100-1080	10X108	1	0	299
BFSE-100-1140	10X114	1	0	299
BFSE-100-1200	10X120	1	0	299
BFSE-120-240	12X24	1	0	299
BFSE-120-300	12X30	1	0	299
BFSE-120-360	12X36	1	0	299
BFSE-120-420	12X42	1	0	299
BFSE-120-480	12X48	1	0	299
BFSE-120-540	12X54	1	0	299
BFSE-120-600	12X60	1	0	299
BFSE-120-720	12X72	1	0	299
BFSE-120-780	12X78	1	0	299
BFSE-120-840	12X84	1	0	299
BFSE-120-900	12X90	1	0	299
BFSE-120-960	12X96	1	0	299
BFSE-120-1020	12X102	1	0	299
BFSE-120-1080	12X108	1	0	299
BFSE-120-1140	12X114	1	0	299
BFSE-120-1200	12X120	1	0	299
BFSE-140-240	14-24	1	0	299
BFSE-140-300	14-24X12	1	0	299

Suitable for Oil-Free air handling to 25 psi, not for distribution of compressed air or gas



JJD

JJ DOWNS INDUSTRIAL PLASTICS INC.



member
iapd
international association
of plastics distribution

416.236.1884
Toronto, ON
JJDOWNS.COM



Valves Product
Butterfly Valve Accessories & Repair Kits

Butterfly Valve Accessories & Repair Kits

Stem Extensions (continued)

Part Number	Size	Std Pk	Mstr Ctn	Prod Code
BFSE-140-360	14-24X30	1	0	299
BFSE-140-480	14-24X48	1	0	299
BFSE-140-540	14-24X54	1	0	299
BFSE-140-600	14-24X60	1	0	299
BFSE-140-720	14-24X72	1	0	299
BFSE-140-750	14-24X75	1	0	299
BFSE-140-780	14-24X78	1	0	299
BFSE-140-840	14-24X84	1	0	299
BFSE-140-900	14-24X90	1	0	299
BFSE-140-960	14-24X96	1	0	299
BFSE-140-1200	14-24X120	1	0	299

Valve Sizes 14" - 24" use the same Stem Extensions

Butterfly Valve Seat Repair Kits

Important Repair & Overhaul Kit Ordering Note

Ongoing Butterfly Valve design improvements have resulted in variations to repair kits. Standard cataloged kits are for current 72 part number series, dry-stem type valve revision. Kits for previous revisions are available and can be determined by valve serial number. When ordering kits, please specify valve size, material (PVC, CPVC, PP), Standard, Lug or True Lug type valve, Buna-N, EPDM or FKM elastomer material, and valve serial number stamped on the bottom of the valve body to insure proper kit selection. Stainless Steel Stems are normally not replaced, but can be ordered separately on request.

Seat Repair Kits for Standard Valve include:
1-Seat
1-Seal Carrier

Repair Kits for Wafer Valve include:
1-Seat
2-Flange Gaskets

Seat Repair Kits for 14" & Larger Valves include:
1-Seat

PVC Standard Valve Seat Repair Kits

Size	Buna-N	EPDM	FKM	Std Pk	Mstr Pk	Prod Code
1-1/2	BF-BRK-015	BF-ERK-015	BF-VRK-015	1	10	299
2	BF-BRK-020	BF-ERK-020	BF-VRK-020	1	10	299
2-1/2	BF-BRK-025	BF-ERK-025	BF-VRK-025	1	10	299
3	BF-BRK-030	BF-ERK-030	BF-VRK-030	1	10	299
4	BF-BRK-040	BF-ERK-040	BF-VRK-040	1	10	299
6	BF-BRK-060	BF-ERK-060	BF-VRK-060	1	10	299
8	BF-BRK-080	BF-ERK-080	BF-VRK-080	1	5	299
10	BF-BRK-100	BF-ERK-100	BF-VRK-100	1	10	299
12	BF-BRK-120	BF-ERK-120	BF-VRK-120	1	10	299

CPVC Standard Valve Seat Repair Kits

Size	Buna-N	EPDM	FKM	Std Pk	Mstr Pk	Prod Code
1-1/2	BF-BRK-015C	BF-ERK-015C	BF-VRK-015C	1	10	299
2	BF-BRK-020C	BF-ERK-020C	BF-VRK-020C	1	10	299
2-1/2	BF-BRK-025C	BF-ERK-025C	BF-VRK-025C	1	10	299
3	BF-BRK-030C	BF-ERK-030C	BF-VRK-030C	1	10	299
4	BF-BRK-040C	BF-ERK-040C	BF-VRK-040C	1	10	299
6	BF-BRK-060C	BF-ERK-060C	BF-VRK-060C	1	10	299

CPVC Standard Valve Seat Repair Kits (continued)

Size	Buna-N	EPDM	FKM	Std Pk	Mstr Pk	Prod Code
8	BF-BRK-080C	BF-ERK-080C	BF-VRK-080C	1	5	299
10	BF-BRK-100C	BF-ERK-100C	BF-VRK-100C	1	10	299
12	BF-BRK-120C	BF-ERK-120C	BF-VRK-120C	1	10	299

PP Standard Valve Seat Repair Kits

Size	Buna-N	EPDM	FKM	Std Pk	Mstr Pk	Prod Code
1-1/2	BF-BRK-015P	BF-ERK-015P	BF-VRK-015P	1	10	299
2	BF-BRK-020P	BF-ERK-020P	BF-VRK-020P	1	10	299
2-1/2	BF-BRK-025P	BF-ERK-025P	BF-VRK-025P	1	10	299
3	BF-BRK-030P	BF-ERK-030P	BF-VRK-030P	1	10	299
4	BF-BRK-040P	BF-ERK-040P	BF-VRK-040P	1	10	299
6	BF-BRK-060P	BF-ERK-060P	BF-VRK-060P	1	10	299
8	BF-BRK-080P	BF-ERK-080P	BF-VRK-080P	1	10	299
10	BF-BRK-100P	BF-ERK-100P	BF-VRK-100P	1	10	299
12	BF-BRK-120P	BF-ERK-120P	BF-VRK-120P	1	10	299
14		BF-ERK-140P	BF-VRK-140P	1	15	299
16		BF-ERK-160P	BF-VRK-160P	1	15	299
18		BF-ERK-180P	BF-VRK-180P	1	15	299
20		BF-ERK-200P	BF-VRK-200P	1	15	299
24		BF-ERK-240P	BF-VRK-240P	1	15	299

PVC & CPVC Wafer Butterfly Valve Repair Kits

Size	Buna-N	EPDM	FKM	Std Pk	Mstr Pk	Prod Code
2	BFW-BRK-020	BFW-ERK-020	BFW-VRK-020	1	10	299
2-1/2	BFW-BRK-025	BFW-ERK-025	BFW-VRK-025	1	10	299
3	BFW-BRK-030	BFW-ERK-030	BFW-VRK-030	1	10	299
4	BFW-BRK-040	BFW-ERK-040	BFW-VRK-040	1	10	299
6	BFW-BRK-060	BFW-ERK-060	BFW-VRK-060	1	10	299
8	BFW-BRK-080	BFW-ERK-080	BFW-VRK-080	1	10	299

Standard Valve Overhaul Kits

Standard Valve Overhaul Kits include:

- 1-Seat
- 1-Disc Timing Stop
- 1-Stem Bushing
- 1-Lower Stem Bearing
- 2-Stem O-rings
- 1-Upper Disc O-ring
- 1-Seal Carrier
- 1-Stem Nut
- 1-Hex Washer
- 1-Round Washer
- 2-Bushing O-rings
- 1-Lower Disc O-ring

Kits with Disc option include additional replacement Disc

PVC Standard Valve Overhaul Kits

Size	Buna-N	EPDM	FKM	Std Pk	Mstr Pk	Prod Code
1-1/2	BF-BOK-015	BF-EOK-015	BF-VOK-015	1	10	299
2	BF-BOK-020	BF-EOK-020	BF-VOK-020	1	10	299
2-1/2	BF-BOK-025	BF-EOK-025	BF-VOK-025	1	10	299
3	BF-BOK-030	BF-EOK-030	BF-VOK-030	1	10	299
4	BF-BOK-040	BF-EOK-040	BF-VOK-040	1	10	299
6	BF-BOK-060	BF-EOK-060	BF-VOK-060	1	10	299
8	BF-BOK-080	BF-EOK-080	BF-VOK-080	1	10	299
10	BF-BOK-100	BF-EOK-100	BF-VOK-100	1	10	299
12	BF-BOK-120	BF-EOK-120	BF-VOK-120	1	10	299

Suitable for Oil-Free air handling to 25 psi, not for distribution of compressed air or gas

JJ DOWNS INDUSTRIAL PLASTICS INC.

416.236.1884
Toronto, ON
JJDOWNS.COM



Valves Product
Butterfly Valve Accessories & Repair Kits

Butterfly Valve Accessories & Repair Kits

CPVC Standard Valve Overhaul Kits

Size	Buna-N	EPDM	FKM	Std Pk	Mstr Pk	Prod Code
1-1/2	BF-BOK-015C	BF-EOK-015C	BF-VOK-015C	1	10	299
2	BF-BOK-020C	BF-EOK-020C	BF-VOK-020C	1	10	299
2-1/2	BF-BOK-025C	BF-EOK-025C	BF-VOK-025C	1	10	299
3	BF-BOK-030C	BF-EOK-030C	BF-VOK-030C	1	10	299
4	BF-BOK-040C	BF-EOK-040C	BF-VOK-040C	1	10	299
6	BF-BOK-060C	BF-EOK-060C	BF-VOK-060C	1	10	299
8	BF-BOK-080C	BF-EOK-080C	BF-VOK-080C	1	10	299
10	BF-BOK-100C	BF-EOK-100C	BF-VOK-100C	1	10	299
12	BF-BOK-120C	BF-EOK-120C	BF-VOK-120C	1	10	299

PP Standard Valve Overhaul Kits

Size	Buna-N	EPDM	FKM	Std Pk	Mstr Pk	Prod Code
1-1/2	BF-BOK-015P	BF-EOK-015P	BF-VOK-015P	1	10	299
2	BF-BOK-020P	BF-EOK-020P	BF-VOK-020P	1	10	299
2-1/2	BF-BOK-025P	BF-EOK-025P	BF-VOK-025P	1	10	299
3	BF-BOK-030P	BF-EOK-030P	BF-VOK-030P	1	10	299
4	BF-BOK-040P	BF-EOK-040P	BF-VOK-040P	1	10	299
6	BF-BOK-060P	BF-EOK-060P	BF-VOK-060P	1	10	299
8	BF-BOK-080P	BF-EOK-080P	BF-VOK-080P	1	10	299
10	BF-BOK-100P	BF-EOK-100P	BF-VOK-100P	1	10	299
12	BF-BOK-120P	BF-EOK-120P	BF-VOK-120P	1	10	299
14		BF-EOK-140P	BF-VOK-140P	1	15	299
16		BF-EOK-160P	BF-VOK-160P	1	15	299
18		BF-EOK-180P	BF-VOK-180P	1	15	299
20		BF-EOK-200P	BF-VOK-200P	1	15	299
24		BF-EOK-240P	BF-VOK-240P	1	15	299

PVC Standard Valve Overhaul Kits with Disc

Size	Buna-N	EPDM	FKM	Std Pk	Mstr Pk	Prod Code
1-1/2	BF-BOKD-015	BF-EOKD-015	BF-VOKD-015	1	10	299
2	BF-BOKD-020	BF-EOKD-020	BF-VOKD-020	1	10	299
2-1/2	BF-BOKD-025	BF-EOKD-025	BF-VOKD-025	1	10	299
3	BF-BOKD-030	BF-EOKD-030	BF-VOKD-030	1	10	299
4	BF-BOKD-040	BF-EOKD-040	BF-VOKD-040	1	10	299
6	BF-BOKD-060	BF-EOKD-060	BF-VOKD-060	1	10	299
8	BF-BOKD-080	BF-EOKD-080	BF-VOKD-080	1	10	299
10	BF-BOKD-100	BF-EOKD-100	BF-VOKD-100	1	10	299
12	BF-BOKD-120	BF-EOKD-120	BF-VOKD-120	1	10	299

CPVC Standard Valve Overhaul Kits with Disc

Size	Buna-N	EPDM	FKM	Std Pk	Mstr Pk	Prod Code
1-1/2	BF-BOKD-015C	BF-EOKD-015C	BF-VOKD-015C	1	10	299
2	BF-BOKD-020C	BF-EOKD-020C	BF-VOKD-020C	1	10	299
2-1/2	BF-BOKD-025C	BF-EOKD-025C	BF-VOKD-025C	1	10	299
3	BF-BOKD-030C	BF-EOKD-030C	BF-VOKD-030C	1	10	299
4	BF-BOKD-040C	BF-EOKD-040C	BF-VOKD-040C	1	10	299
6	BF-BOKD-060C	BF-EOKD-060C	BF-VOKD-060C	1	10	299
8	BF-BOKD-080C	BF-EOKD-080C	BF-VOKD-080C	1	10	299
10	BF-BOKD-100C	BF-EOKD-100C	BF-VOKD-100C	1	10	299
12	BF-BOKD-120C	BF-EOKD-120C	BF-VOKD-120C	1	10	299

PP Standard Valve Overhaul Kits with Disc

Size	Buna-N	EPDM	FKM	Std Pk	Mstr Pk	Prod Code
1-1/2	BF-BOKD-015P	BF-EOKD-015P	BF-VOKD-015P	1	10	299
2	BF-BOKD-020P	BF-EOKD-020P	BF-VOKD-020P	1	10	299
2-1/2	BF-BOKD-025P	BF-EOKD-025P	BF-VOKD-025P	1	10	299
3	BF-BOKD-030P	BF-EOKD-030P	BF-VOKD-030P	1	10	299
4	BF-BOKD-040P	BF-EOKD-040P	BF-VOKD-040P	1	10	299
6	BF-BOKD-060P	BF-EOKD-060P	BF-VOKD-060P	1	10	299
8	BF-BOKD-080P	BF-EOKD-080P	BF-VOKD-080P	1	10	299
10	BF-BOKD-100P	BF-EOKD-100P	BF-VOKD-100P	1	10	299
12	BF-BOKD-120P	BF-EOKD-120P	BF-VOKD-120P	1	10	299
14		BF-EOKD-140P	BF-VOKD-140P	1	0	299
16		BF-EOKD-160P	BF-VOKD-160P	1	0	299
18		BF-EOKD-180P	BF-VOKD-180P	1	0	299
20		BF-EOKD-200P	BF-VOKD-200P	1	0	299
24		BF-EOKD-240P	BF-VOKD-240P	1	0	299

Wafer Butterfly Valve Overhaul Kits

Wafer Valve Overhaul Kits include:

- 1-Seat
- 2-Stem Bushing Washers
- 2-Stem Bushing O-rings
- 2-Stem Bushings

Kits with Disc option include additional replacement Disc

PVC & CPVC Wafer Butterfly Valve Overhaul Kits

Size	Buna-N	EPDM	FKM	Std Pk	Mstr Pk	Prod Code
2	BFW-BOK-020	BFW-EOK-020	BFW-VOK-020	1	10	299
2-1/2	BFW-BOK-025	BFW-EOK-025	BFW-VOK-025	1	10	299
3	BFW-BOK-030	BFW-EOK-030	BFW-VOK-030	1	10	299
4	BFW-BOK-040	BFW-EOK-040	BFW-VOK-040	1	10	299
6	BFW-BOK-060	BFW-EOK-060	BFW-VOK-060	1	10	299
8	BFW-BOK-080	BFW-EOK-080	BFW-VOK-080	1	10	299

PVC Wafer Butterfly Valve Overhaul Kits with Disc

Size	Buna-N	EPDM	FKM	Std Pk	Mstr Pk	Prod Code
2	BFW-BOKD-020	BFW-EOKD-020	BFW-VOKD-020	1	10	299
2-1/2	BFW-BOKD-025	BFW-EOKD-025	BFW-VOKD-025	1	10	299
3	BFW-BOKD-030	BFW-EOKD-030	BFW-VOKD-030	1	10	299
4	BFW-BOKD-040	BFW-EOKD-040	BFW-VOKD-040	1	10	299
6	BFW-BOKD-060	BFW-EOKD-060	BFW-VOKD-060	1	10	299
8	BFW-BOKD-080	BFW-EOKD-080	BFW-VOKD-080	1	10	299

CPVC Wafer Butterfly Valve Overhaul Kits with Disc

Size	EPDM	FKM	Std Pk	Mstr Pk	Prod Code
2	BFW-EOKD-020C	BFW-VOKD-020C	1	10	299
2-1/2	BFW-EOKD-025C	BFW-VOKD-025C	1	10	299
3	BFW-EOKD-030C	BFW-VOKD-030C	1	10	299
4	BFW-EOKD-040C	BFW-VOKD-040C	1	10	299
6	BFW-EOKD-060C	BFW-VOKD-060C	1	10	299
8	BFW-EOKD-080C	BFW-VOKD-080C	1	10	299

Contact Spears® for MSRP on the following additional accessories:

- PTFE Seat Sleeves
- PTFE Coated Valve Stems

Suitable for Oil-Free air handling to 25 psi, not for distribution of compressed air or gas

JJ DOWNS INDUSTRIAL PLASTICS INC.

416.236.1884
Toronto, ON
JJDOWNS.COM



Valves Product
Butterfly Valve Accessories & Repair Kits

Butterfly Valve Accessories & Repair Kits
PVC True Lug Valve Overhaul Kits

True Lug Valve Overhaul Kits include:

- | | |
|----------------------|------------------------------|
| 1-Seat | 1-Round Washer |
| 1-Seal Carrier | 2-Stem O-rings |
| 1-Disc Timing Stop | 2-Bushing O-rings |
| 1-Stem Nut | 1-Upper Disc O-ring |
| 1-Stem Bushing | 1-Lower Disc O-ring |
| 1-Hex Washer | 1-Seal Carrier Flange O-ring |
| 1-Lower Stem Bearing | |

CPVC True Lug Valve Overhaul Kits with Disc (continued)

Size	Buna-N	EPDM	FKM	Std Pk	Mstr Pk	Prod Code
12	BFT-BOKD-120C	BFT-EOKD-120C	BFT-VOKD-120C	1	10	299

PVC True Lug Valve Overhaul Kits

Size	Buna-N	EPDM	FKM	Std Pk	Mstr Pk	Prod Code
1-1/2	BFT-BOK-015	BFT-EOK-015	BFT-VOK-015	1	10	299
2	BFT-BOK-020	BFT-EOK-020	BFT-VOK-020	1	10	299
2-1/2	BFT-BOK-025	BFT-EOK-025	BFT-VOK-025	1	10	299
3	BFT-BOK-030	BFT-EOK-030	BFT-VOK-030	1	10	299
4	BFT-BOK-040	BFT-EOK-040	BFT-VOK-040	1	10	299
6	BFT-BOK-060	BFT-EOK-060	BFT-VOK-060	1	10	299
8	BFT-BOK-080	BFT-EOK-080	BFT-VOK-080	1	10	299
10	BFT-BOK-100	BFT-EOK-100	BFT-VOK-100	1	10	299
12	BFT-BOK-120	BFT-EOK-120	BFT-VOK-120	1	15	299

CPVC True Lug Valve Overhaul Kits

Size	Buna-N	EPDM	FKM	Std Pk	Mstr Pk	Prod Code
1-1/2	BFT-BOK-015C	BFT-EOK-015C	BFT-VOK-015C	1	10	299
2	BFT-BOK-020C	BFT-EOK-020C	BFT-VOK-020C	1	10	299
2-1/2	BFT-BOK-025C	BFT-EOK-025C	BFT-VOK-025C	1	10	299
3	BFT-BOK-030C	BFT-EOK-030C	BFT-VOK-030C	1	10	299
4	BFT-BOK-040C	BFT-EOK-040C	BFT-VOK-040C	1	10	299
6	BFT-BOK-060C	BFT-EOK-060C	BFT-VOK-060C	1	10	299
8	BFT-BOK-080C	BFT-EOK-080C	BFT-VOK-080C	1	10	299
10	BFT-BOK-100C	BFT-EOK-100C	BFT-VOK-100C	1	10	299
12	BFT-BOK-120C	BFT-EOK-120C	BFT-VOK-120C	1	15	299

PVC True Lug Valve Overhaul Kits with Disc

Size	Buna-N	EPDM	FKM	Std Pk	Mstr Pk	Prod Code
1-1/2	BFT-BOKD-015	BFT-EOKD-015	BFT-VOKD-015	1	10	299
2	BFT-BOKD-020	BFT-EOKD-020	BFT-VOKD-020	1	10	299
2-1/2	BFT-BOKD-025	BFT-EOKD-025	BFT-VOKD-025	1	10	299
3	BFT-BOKD-030	BFT-EOKD-030	BFT-VOKD-030	1	10	299
4	BFT-BOKD-040	BFT-EOKD-040	BFT-VOKD-040	1	10	299
6	BFT-BOKD-060	BFT-EOKD-060	BFT-VOKD-060	1	10	299
8	BFT-BOKD-080	BFT-EOKD-080	BFT-VOKD-080	1	10	299
10	BFT-BOKD-100	BFT-EOKD-100	BFT-VOKD-100	1	10	299
12	BFT-BOKD-120	BFT-EOKD-120	BFT-VOKD-120	1	10	299

CPVC True Lug Valve Overhaul Kits with Disc

Size	Buna-N	EPDM	FKM	Std Pk	Mstr Pk	Prod Code
1-1/2	BFT-BOKD-015C	BFT-EOKD-015C	BFT-VOKD-015C	1	10	299
2	BFT-BOKD-020C	BFT-EOKD-020C	BFT-VOKD-020C	1	10	299
2-1/2	BFT-BOKD-025C	BFT-EOKD-025C	BFT-VOKD-025C	1	10	299
3	BFT-BOKD-030C	BFT-EOKD-030C	BFT-VOKD-030C	1	10	299
4	BFT-BOKD-040C	BFT-EOKD-040C	BFT-VOKD-040C	1	10	299
6	BFT-BOKD-060C	BFT-EOKD-060C	BFT-VOKD-060C	1	10	299
8	BFT-BOKD-080C	BFT-EOKD-080C	BFT-VOKD-080C	1	10	299
10	BFT-BOKD-100C	BFT-EOKD-100C	BFT-VOKD-100C	1	10	299

Suitable for Oil-Free air handling to 25 psi, not for distribution of compressed air or gas

	 <small>international association of plastics distribution</small>
JJ DOWNS INDUSTRIAL PLASTICS INC.	
416.236.1884	Toronto, ON
JJDOWNS.COM	