



Schedule 80 PVC Product
Glue-On Saddles

Glue-On Saddles

Part Number	Size	Std Pk	Mstr Ctn	Prod Code
-------------	------	--------	----------	-----------

Saddle

IPS O.D. x Socket Schedule 80



Non-Pressure Rated

3963-528	6X2	1	6	400
3963-530	6X3	1	10	400
3963-532	6X4	1	8	400
3963-578	8X2	1	10	400
3963-580	8X3	1	10	400
3963-582	8X4	1	5	400
3963-585	8X6	1	5	400
3963-621	10X2	1	8	400
3963-623	10X3	1	5	400
3963-624	10X4	1	8	400
3963-626	10X6	1	5	400
3963-628	10X8	1	5	400
3963-661	12X2	1	10	400
3963-663	12X3	1	8	400
3963-664	12X4	1	10	400
3963-666	12X6	1	5	400
3963-668	12X8	1	2	400
3963-670	12X10	1	4	400
3963-693	14X3	1	8	400
3963-694	14X4	1	5	400
3963-696	14X6	1	8	400
3963-698	14X8	1	4	400
3963-700	14X10	1	3	400
3963-702	14X12	1	4	400
3963-751	16X2	1	10	400
3963-753	16X3	1	8	400
3963-754	16X4	1	10	400
3963-756	16X6	1	8	400
3963-758	16X8	1	3	400
3963-760	16X10	1	0	400
3963-762	16X12	1	0	400
3963-764	16X14	1	0	400
3963-781	18X2	1	10	400
3963-783	18X3	1	4	400
3963-784	18X4	1	5	400
3963-786	18X6	1	4	400
3963-788	18X8	1	5	400
3963-790	18X10	1	0	400
3963-792	18X12	1	0	400
3963-794	18X14	1	0	400
3963-796	18X16	1	0	400
3963-811	20X2	1	12	400
3963-813	20X3	1	10	400
3963-814	20X4	1	6	400
3963-816	20X6	1	7	400
3963-818	20X8	1	5	400

Part Number	Size	Std Pk	Mstr Ctn	Prod Code
-------------	------	--------	----------	-----------

Saddle (continued)

IPS O.D. x Socket Schedule 80

3963-820	20X10	1	0	400
3963-822	20X12	1	0	400
3963-824	20X14	1	0	400
3963-826	20X16	1	0	400
3963-828	20X18	1	0	400
3963-901	24X2	1	5	400
3963-903	24X3	1	5	400
3963-904	24X4	1	5	400
3963-906	24X6	1	5	400
3963-908	24X8	1	5	409
3963-910	24X10	1	5	400
3963-912	24X12	1	0	409
3963-914	24X14	1	0	400
3963-916	24X16	1	0	400
3963-918	24X18	1	0	400
3963-920	24X20	1	0	400

Stub Saddle

IPS O.D. x Socket Schedule 80



Non-Pressure Rated

3965-528	6X2	1	8	400
3965-530	6X3	1	3	400
3965-532	6X4	1	10	400
3965-578	8X2	1	5	409
3965-580	8X3	1	4	400
3965-582	8X4	1	6	400
3965-585	8X6	1	4	400
3965-621	10X2	1	6	400
3965-623	10X3	1	6	409
3965-624	10X4	1	4	400
3965-626	10X6	1	4	400
3965-628	10X8	1	2	400
3965-661	12X2	1	4	400
3965-663	12X3	1	4	400
3965-664	12X4	1	2	400
3965-666	12X6	1	2	400
3965-668	12X8	1	2	400
3965-670	12X10	1	0	400
3965-691	14X2	1	6	400
3965-693	14X3	1	4	400
3965-694	14X4	1	5	400
3965-696	14X6	1	2	400
3965-700	14X10	1	0	400
3965-702	14X12	1	0	400
3965-751	16X2	1	5	400
3965-753	16X3	1	4	400
3965-754	16X4	1	3	400
3965-756	16X6	1	2	400
3965-758	16X8	1	3	400
3965-760	16X10	1	3	400

Suitable for Oil-Free air handling to 25 psi, not for distribution of compressed air or gas

JJ DOWNS INDUSTRIAL PLASTICS INC.

416.236.1884
Toronto, ON
JJDOWNS.COM



Schedule 80 PVC Product
Glue-On Saddles & Clamp-On Saddles

Glue-On Saddles

Part Number	Size	Std Pk	Mstr Ctn	Prod Code
Stub Saddle (continued)				
IPS O.D. x Socket Schedule 80				
3965-762	16X12	1	0	400
3965-764	16X14	1	0	400
3965-781	18X2	1	2	400
3965-783	18X3	1	4	400
3965-784	18X4	1	0	400
3965-786	18X6	1	2	400
3965-788	18X8	1	2	400
3965-790	18X10	1	0	400
3965-792	18X12	1	0	400
3965-794	18X14	1	0	400
3965-796	18X16	1	0	400
3965-811	20X2	1	4	400
3965-813	20X3	1	4	400
3965-814	20X4	1	4	400
3965-816	20X6	1	0	400
3965-818	20X8	1	0	400
3965-820	20X10	1	0	400
3965-822	20X12	1	0	400
3965-824	20X14	1	0	400
3965-826	20X16	1	0	400
3965-828	20X18	1	0	400
3965-901	24X2	1	5	400
3965-903	24X3	1	2	400
3965-904	24X4	1	5	400
3965-906	24X6	1	3	400
3965-908	24X8	1	0	400
3965-910	24X10	1	0	400
3965-912	24X12	1	0	409
3965-914	24X14	1	0	400
3965-916	24X16	1	0	400
3965-918	24X18	1	0	400
3965-920	24X20	1	0	400

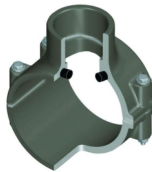
Clamp-On Saddles

Clamp-On Saddle x Socket Single Outlet PVC Gray

with FKM O-ring Seal & Zinc-Plated Hardware

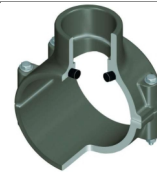
2"- 4" 235, 6" 200, 8"-12" 150 psi @ 73°F (23°C)

Part Number	Size	Hole Dia	Std Pk	Mstr Ctn	Prod Code
866V-247	2X1/2	3/4	1	10	086
866V-248	2X3/4	7/8	1	10	086
866V-249	2X1	1-1/8	1	10	086
866V-250	2X1-1/4	1-1/2	1	10	086
866V-251	2X1-1/2	1-1/2	1	10	086
866V-291	2-1/2X1-1/2	1-3/4	1	10	086
866V-333 ¹	3X1/2	7/8	1	10	086
866V-334	3X3/4	7/8	1	10	086
866V-335	3X1	1-1/8	1	10	086



Part Number	Size	Hole Saw Dia	Std Pk	Mstr Ctn	Prod Code
Clamp-On Saddle x Socket Single Outlet PVC Gray (continued)					
with FKM O-ring Seal & Zinc-Plated Hardware					
866V-336 ¹	3X1-1/4	2-1/4	1	10	086
866V-337 ¹	3X1-1/2	2-1/4	1	10	086
866V-338	3X2	2-1/4	1	10	086
866V-415 ¹	4X1/2	1-1/8	1	10	086
866V-416 ¹	4X3/4	1-1/8	1	10	086
866V-417	4X1	1-1/8	1	8	086
866V-418 ¹	4X1-1/4	1-3/4	1	8	086
866V-419	4X1-1/2	1-3/4	1	8	086
866V-420	4X2	2-1/4	1	8	086
866V-421 ¹	4X2-1/2	3	1	4	086
866V-422	4X3	3	1	4	086
866V-523 ¹	6X1/2	1-1/8	1	4	086
866V-524 ¹	6X3/4	1-1/8	1	4	086
866V-525	6X1	1-1/8	1	4	086
866V-526 ¹	6X1-1/4	2-1/4	1	4	086
866V-527 ¹	6X1-1/2	2-1/4	1	4	086
866V-528	6X2	2-1/4	1	4	086
866V-529 ¹	6X2-1/2	3	1	4	086
866V-530	6X3	3	1	4	086
866V-532	6X4	4	1	4	086
866V-573 ¹	8X1/2	4	1	0	086
866V-574 ¹	8X3/4	4	1	0	086
866V-575 ¹	8X1	4	1	0	086
866V-576 ¹	8X1-1/4	4	1	0	086
866V-577 ¹	8X1-1/2	4	1	0	086
866V-578	8 X 2	4	1	0	086
866V-579 ¹	8X2-1/2	4	1	0	086
866V-580 ¹	8X3	4	1	0	086
866V-582	8X4	4	1	0	086
866V-585	8X6	6	1	0	086
866V-624	10X4	4	1	0	086
866V-626	10X6	6	1	0	086
866V-664	12X4	4	1	0	086
866V-666	12X6	6	1	0	086

¹ Outlet-sized with Bushing



Clamp-On Saddle x Socket Single Outlet PVC Gray

with FKM O-ring Seal & SS Hardware

2"- 4" 235, 6" 200, 8"-12" 150 psi @ 73°F (23°C)

Part Number	Size	Hole Dia	Std Pk	Mstr Ctn	Prod Code
866SV-247	2X1/2	3/4	1	10	086
866SV-248	2X3/4	7/8	1	10	086
866SV-249	2X1	1-1/8	1	10	086
866SV-250	2X1-1/4	1-1/2	1	10	086
866SV-251	2X1-1/2	1-1/2	1	10	086
866SV-291	2-1/2X1-1/2	1-3/4	1	10	086
866SV-333 ¹	3X1/2	7/8	1	10	086
866SV-334	3X3/4	7/8	1	10	086
866SV-335	3X1	1-1/8	1	10	086
866SV-336 ¹	3X1-1/4	2-1/4	1	10	086
866SV-337 ¹	3X1-1/2	2-1/4	1	10	086

Suitable for Oil-Free air handling to 25 psi, not for distribution of compressed air or gas

JJ DOWNS INDUSTRIAL PLASTICS INC.

416.236.1884 Toronto, ON JJDOWNS.COM

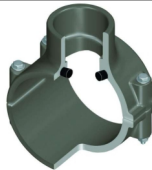


Schedule 80 PVC Product
Clamp-On Saddles

Clamp-On Saddles

Part Number	Size	Hole Saw Dia	Std Pk	Mstr Ctn	Prod Code
Clamp-On Saddle x Socket Single Outlet PVC Gray (continued) with FKM O-ring Seal & SS Hardware					
866SV-338	3X2	2-1/4	1	10	086
866SV-415 ¹	4X1/2	1-1/8	1	10	086
866SV-416 ¹	4X3/4	1-1/8	1	10	086
866SV-417	4X1	1-1/8	1	8	086
866SV-418 ¹	4X1-1/4	1-3/4	1	8	086
866SV-419	4X1-1/2	1-3/4	1	8	086
866SV-420	4X2	2-1/4	1	8	086
866SV-421 ¹	4X2-1/2	3	1	4	086
866SV-422	4X3	3	1	4	086
866SV-523 ¹	6X1/2	1-1/8	1	4	086
866SV-524 ¹	6X3/4	1-1/8	1	4	086
866SV-525	6X1	1-1/8	1	4	086
866SV-526 ¹	6X1-1/4	2-1/4	1	4	086
866SV-527 ¹	6X1-1/2	2-1/4	1	4	086
866SV-528	6X2	2-1/4	1	4	086
866SV-529 ¹	6X2-1/2	3	1	4	086
866SV-530	6X3	3	1	4	086
866SV-532	6X4	4	1	4	086
866SV-573 ¹	8X1/2	4	1	0	086
866SV-574 ¹	8X3/4	4	1	0	086
866SV-575 ¹	8 X 1	4	1	0	086
866SV-576 ¹	8X1-1/4	4	1	0	086
866SV-577 ¹	8X1-1/2	4	1	0	086
866SV-578	8 X 2	4	1	0	086
866SV-579 ¹	8X2-1/2	4	1	0	086
866SV-580 ¹	8X3	4	1	0	086
866SV-582	8X4	4	1	0	086
866SV-585	8X6	6	1	0	086
866SV-624	10X4	4	1	0	086
866SV-626	10X6	6	1	0	086
866SV-664	12X4	4	1	0	086
866SV-666	12X6	6	1	0	086

¹ Outlet-sized with Bushing



Clamp-On Saddle x Socket Single Outlet PVC Gray

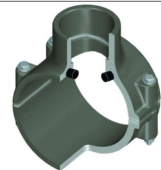
with EPDM O-ring Seal & Zinc-Plated Hardware

2"- 4" 235, 6" 200, 8"-12" 150 psi @ 73°F (23°C)

866-247	2X1/2	3/4	1	10	086
866-248	2X3/4	7/8	1	10	086
866-249	2X1	1-1/8	1	10	086
866-250	2X1-1/4	1-1/2	1	10	086
866-251	2X1-1/2	1-1/2	1	10	086
866-291	2-1/2X1-1/2	1-3/4	1	10	086
866-333 ¹	3X1/2	7/8	1	10	086
866-334	3X3/4	7/8	1	10	086
866-335	3X1	1-1/8	1	10	086
866-336 ¹	3X1-1/4	2-1/4	1	10	086

Part Number	Size	Hole Saw Dia	Std Pk	Mstr Ctn	Prod Code
Clamp-On Saddle x Socket Single Outlet PVC Gray (continued) with EPDM O-ring Seal & Zinc-Plated Hardware					
866-337 ¹	3X1-1/2	2-1/4	1	10	086
866-338	3X2	2-1/4	1	10	086
866-415 ¹	4X1/2	1-1/8	1	10	086
866-416 ¹	4X3/4	1-1/8	1	10	086
866-417	4X1	1-1/8	1	10	086
866-418 ¹	4X1-1/4	1-3/4	1	8	086
866-419	4X1-1/2	1-3/4	1	8	086
866-420	4X2	2-1/4	1	8	086
866-421 ¹	4X2-1/2	3	1	4	086
866-422	4X3	3	1	4	086
866-523 ¹	6X1/2	1-1/8	1	4	086
866-524 ¹	6X3/4	1-1/8	1	4	086
866-525	6X1	1-1/8	1	4	086
866-526 ¹	6X1-1/4	2-1/4	1	4	086
866-527 ¹	6X1-1/2	2-1/4	1	4	086
866-528	6X2	2-1/4	1	4	086
866-529 ¹	6X2-1/2	3	1	4	086
866-530	6X3	3	1	4	086
866-532	6X4	4	1	4	086
866-573 ¹	8X1/2	4	1	0	086
866-574 ¹	8X3/4	4	1	0	086
866-575 ¹	8X1	4	1	0	086
866-576 ¹	8X1-1/4	4	1	0	086
866-577 ¹	8X1-1/2	4	1	0	086
866-578	8 X 2	4	1	0	086
866-579 ¹	8X2-1/2	4	1	0	086
866-580 ¹	8X3	4	1	0	086
866-582	8X4	4	1	0	086
866-585	8X6	6	1	0	086
866-621 ¹	10X2	4	1	0	086
866-624	10X4	4	1	0	086
866-626	10X6	6	1	0	086
866-664	12X4	4	1	0	086
866-665 ¹	12X5	6	1	0	086
866-666	12X6	6	1	0	086

¹ Outlet-sized with Bushing



Clamp-On Saddle x Socket Single Outlet PVC Gray

with EPDM O-ring Seal & SS Hardware

2"- 4" 235, 6" 200, 8"-12" 150 psi @ 73°F (23°C)

866S-247	2X1/2	3/4	1	10	086
866S-248	2X3/4	7/8	1	10	086
866S-249	2X1	1-1/8	1	10	086
866S-250	2X1-1/4	1-1/2	1	10	086
866S-251	2X1-1/2	1-1/2	1	10	086
866S-291	2-1/2X1-1/2	1-3/4	1	10	086
866S-333 ¹	3X1/2	7/8	1	10	086
866S-334	3X3/4	7/8	1	10	086
866S-335	3X1	1-1/8	1	10	086
866S-336 ¹	3X1-1/4	2-1/4	1	10	086

Suitable for Oil-Free air handling to 25 psi, not for distribution of compressed air or gas

JJ DOWNS INDUSTRIAL PLASTICS INC.

416.236.1884 Toronto, ON JJDOWNS.COM

member
iapd
international association
of plastics distribution



Schedule 80 PVC Product
Clamp-On Saddles

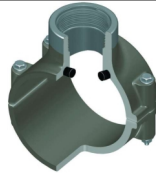
Clamp-On Saddles

Part Number	Size	Hole Saw Dia	Std Pk	Mstr Ctn	Prod Code
-------------	------	--------------	--------	----------	-----------

Clamp-On Saddle x Socket Single Outlet PVC Gray (continued)
with EPDM O-ring Seal & SS Hardware

866S-337 ¹	3X1-1/2	2-1/4	1	10	086
866S-338	3X2	2-1/4	1	10	086
866S-415 ¹	4X1/2	1-1/8	1	10	086
866S-416 ¹	4X3/4	1-1/8	1	10	086
866S-417	4X1	1-1/8	1	8	086
866S-418 ¹	4X1-1/4	1-3/4	1	8	086
866S-419	4X1-1/2	1-3/4	1	8	086
866S-420	4X2	2-1/4	1	8	086
866S-421 ¹	4X2-1/2	3	1	4	086
866S-422	4X3	3	1	4	086
866S-523 ¹	6X1/2	1-1/8	1	4	086
866S-524 ¹	6X3/4	1-1/8	1	4	086
866S-525	6X1	1-1/8	1	4	086
866S-526 ¹	6X1-1/4	2-1/4	1	4	086
866S-527 ¹	6X1-1/2	2-1/4	1	4	086
866S-528	6X2	2-1/4	1	4	086
866S-529 ¹	6X2-1/2	3	1	4	086
866S-530	6X3	3	1	4	086
866S-532	6X4	4	1	4	086
866S-573 ¹	8X1/2	4	1	0	086
866S-574 ¹	8X3/4	4	1	0	086
866S-575	8X1	4	1	0	086
866S-576 ¹	8X1-1/4	4	1	0	086
866S-577 ¹	8X1-1/2	4	1	0	086
866S-578	8 X 2	4	1	0	086
866S-579 ¹	8X2-1/2	4	1	0	086
866S-580 ¹	8X3	4	1	0	086
866S-582	8X4	4	1	0	086
866S-585	8X6	6	1	0	086
866S-624	10X4	4	1	0	086
866S-626	10X6	6	1	0	086
866S-664	12X4	4	1	0	086
866S-666	12X6	6	1	0	086

¹ Outlet-sized with Bushing



Clamp-On Saddle x SR Thread Single Outlet PVC Gray

with FKM O-ring Seal & Zinc-Plated Hardware

2"- 4" 235, 6" 200, 8"-12" 150 psi @ 73°F (23°C)

867V-247SR	2X1/2	3/4	1	10	086
867V-248SR	2X3/4	7/8	1	10	086
867V-249SR	2X1	1-1/8	1	10	086
867V-250SR	2X1-1/4	1-1/2	1	10	086
867V-251SR	2X1-1/2	1-1/2	1	10	086
867V-291SR	2-1/2X1-1/2	1-3/4	1	10	086
867V-333SR ¹	3X1/2	7/8	1	10	086
867V-334SR	3X3/4	7/8	1	10	086
867V-335SR	3X1	1-1/8	1	10	086

Part Number	Size	Hole Saw Dia	Std Pk	Mstr Ctn	Prod Code
-------------	------	--------------	--------	----------	-----------

Clamp-On Saddle x SR Thread Single Outlet PVC Gray (continued)
with FKM O-ring Seal & Zinc-Plated Hardware

867V-336SR ¹	3X1-1/4	2-1/4	1	10	086
867V-337SR ¹	3X1-1/2	2-1/4	1	10	086
867V-338SR	3X2	2-1/4	1	10	086
867V-415SR ¹	4X1/2	1-1/8	1	10	086
867V-416SR ¹	4X3/4	1-1/8	1	10	086
867V-417SR	4X1	1-1/8	1	8	086
867V-418SR ¹	4X1-1/4	1-3/4	1	8	086
867V-419SR	4X1-1/2	1-3/4	1	8	086
867V-420SR	4X2	2-1/4	1	8	086
867V-421SR ¹	4X2-1/2	3	1	4	086
867V-422SR	4X3	3	1	4	086
867V-523SR ¹	6X1/2	1-1/8	1	4	086
867V-524SR ¹	6X3/4	1-1/8	1	4	086
867V-525SR	6X1	1-1/8	1	4	086
867V-526SR ¹	6X1-1/4	2-1/4	1	4	086
867V-527SR ¹	6X1-1/2	2-1/4	1	4	086
867V-528SR	6X2	2-1/4	1	4	086
867V-529SR ¹	6X2-1/2	3	1	4	086
867V-530SR	6X3	3	1	4	086
867V-532SR	6X4	4	1	4	086
867V-573SR ¹	8X1/2	4	1	0	086
867V-574SR ¹	8X3/4	4	1	0	086
867V-575SR ¹	8X1	4	1	0	086
867V-576SR ¹	8X1-1/4	4	1	0	086
867V-577SR ¹	8X1-1/2	4	1	0	086
867V-578SR ¹	8X2	4	1	0	086
867V-579SR ¹	8X2-1/2	4	1	0	086
867V-580SR ¹	8X3	4	1	0	086
867V-582SR	8X4	4	1	0	086
867V-585SR	8X6	4	1	0	086
867V-624SR	10X4	4	1	0	086
867V-626SR	10X6	6	1	0	086
867V-664SR	12X4	4	1	0	086
867V-666SR	12X6	6	1	0	086

¹ Outlet-sized with Bushing



Clamp-On Saddle x SR Thread Single Outlet PVC Gray

with FKM O-ring Seal & SS Hardware

2"- 4" 235, 6" 200, 8"-12" 150 psi @ 73°F (23°C)

867SV-245SR ¹	2X1/4	1-1/8	1	10	086
867SV-247SR	2X1/2	3/4	1	10	086
867SV-248SR	2X3/4	7/8	1	10	086
867SV-249SR	2X1	1-1/8	1	10	086
867SV-250SR	2X1-1/4	1-1/2	1	10	086
867SV-251SR	2X1-1/2	1-1/2	1	10	086
867SV-291SR	2-1/2X1-1/2	1-3/4	1	10	086
867SV-331SR ¹	3X1/4	1-1/8	1	10	086
867SV-333SR ¹	3X1/2	7/8	1	10	086
867SV-334SR	3X3/4	7/8	1	10	086

Suitable for Oil-Free air handling to 25 psi, not for distribution of compressed air or gas

JJ DOWNS INDUSTRIAL PLASTICS INC.

international association
of plastics distribution

416.236.1884 Toronto, ON JJDOWNS.COM



Schedule 80 PVC Product
Clamp-On Saddles

Clamp-On Saddles

Part Number	Size	Hole Saw Dia	Std Pk	Mstr Ctn	Prod Code
Clamp-On Saddle x SR Thread Single Outlet PVC Gray (continued) with FKM O-ring Seal & SS Hardware					
867SV-335SR	3X1	1-1/8	1	10	086
867SV-336SR ¹	3X1-1/4	2-1/4	1	10	086
867SV-337SR ¹	3X1-1/2	2-1/4	1	10	086
867SV-338SR	3X2	2-1/4	1	10	086
867SV-413SR ¹	4X1/4	1-1/8	1	8	086
867SV-415SR ¹	4X1/2	1-1/8	1	10	086
867SV-416SR ¹	4X3/4	1-1/8	1	10	086
867SV-417SR	4X1	1-1/8	1	8	086
867SV-418SR ¹	4X1-1/4	1-3/4	1	8	086
867SV-419SR	4X1-1/2	1-3/4	1	8	086
867SV-420SR	4X2	2-1/4	1	8	086
867SV-421SR ¹	4X2-1/2	3	1	4	086
867SV-422SR	4X3	3	1	4	086
867SV-521SR ¹	6X1/4	1-1/8	1	8	086
867SV-523SR ¹	6X1/2	1-1/8	1	4	086
867SV-524SR ¹	6X3/4	1-1/8	1	4	086
867SV-525SR	6X1	1-1/8	1	4	086
867SV-526SR ¹	6X1-1/4	2-1/4	1	4	086
867SV-527SR ¹	6X1-1/2	2-1/4	1	4	086
867SV-528SR	6X2	2-1/4	1	4	086
867SV-529SR ¹	6X2-1/2	3	1	4	086
867SV-530SR	6X3	3	1	4	086
867SV-532SR	6X4	4	1	4	086
867SV-571SR ¹	8X1/4	4	1	0	086
867SV-573SR ¹	8X1/2	4	1	0	086
867SV-574SR ¹	8X3/4	4	1	0	086
867SV-575SR ¹	8X1	4	1	0	086
867SV-576SR ¹	8X1-1/4	4	1	0	086
867SV-577SR ¹	8X1-1/2	4	1	0	086
867SV-578SR ¹	8X2	4	1	0	086
867SV-579SR ¹	8X2-1/2	4	1	0	086
867SV-580SR ¹	8X3	4	1	0	086
867SV-582SR	8X4	4	1	0	086
867SV-585SR	8X6	6	1	0	086
867SV-624SR	10X4	4	1	0	086
867SV-626SR	10X6	6	1	0	086
867SV-664SR	12X4	4	1	0	086
867SV-666SR	12X6	6	1	0	086

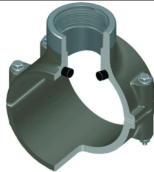
¹ Outlet-sized with Bushing

Clamp-On Saddle x SR Thread Single Outlet PVC Gray

with EPDM O-ring Seal & Zinc-Plated Hardware

2"- 4" 235, 6" 200, 8"-12" 150 psi @ 73°F (23°C)

867-247SR	2X1/2	3/4	1	10	086
867-248SR	2X3/4	7/8	1	10	086
867-249SR	2X1	1-1/8	1	10	086



Part Number	Size	Hole Saw Dia	Std Pk	Mstr Ctn	Prod Code
-------------	------	--------------	--------	----------	-----------

Clamp-On Saddle x SR Thread Single Outlet PVC Gray (continued) with EPDM O-ring Seal & Zinc-Plated Hardware

867-250SR	2X1-1/4	1-1/2	1	10	086
867-251SR	2X1-1/2	1-1/2	1	10	086
867-291SR	2-1/2X1-1/2	1-3/4	1	10	086
867-333SR ¹	3X1/2	7/8	1	10	086
867-334SR	3X3/4	7/8	1	10	086
867-335SR	3X1	1-1/8	1	10	086
867-336SR ¹	3X1-1/4	2-1/4	1	10	086
867-337SR ¹	3X1-1/2	2-1/4	1	10	086
867-338SR	3X2	2-1/4	1	10	086
867-415SR ¹	4X1/2	1-1/8	1	10	086
867-416SR ¹	4X3/4	1-1/8	1	10	086
867-417SR	4X1	1-1/8	1	8	086
867-418SR ¹	4X1-1/4	1-3/4	1	8	086
867-419SR ¹	4X1-1/2	1-3/4	1	8	086
867-420SR	4X2	2-1/4	1	8	086
867-421SR ¹	4X2-1/2	3	1	4	086
867-422SR	4X3	3	1	4	086
867-523SR ¹	6X1/2	1-1/8	1	4	086
867-524SR ¹	6X3/4	1-1/8	1	4	086
867-525SR	6X1	1-1/8	1	4	086
867-526SR ¹	6X1-1/4	2-1/4	1	4	086
867-527SR ¹	6X1-1/2	2-1/4	1	4	086
867-528SR	6X2	2-1/4	1	4	086
867-529SR ¹	6X2-1/2	3	1	4	086
867-530SR	6X3	3	1	4	086
867-532SR	6X4	4	1	4	086
867-573SR	8X1/2	4	1	0	086
867-574SR ¹	8X3/4	4	1	0	086
867-575SR	8X1	4	1	0	086
867-576SR ¹	8X1-1/4	4	1	0	086
867-577SR ¹	8X1-1/2	4	1	0	086
867-578SR ¹	8X2	4	1	0	086
867-579SR ¹	8X2-1/2	4	1	0	086
867-580SR ¹	8X3	4	1	0	086
867-582SR	8X4	4	1	0	086
867-585SR	8X6	6	1	0	086
867-624SR	10X4	4	1	0	086
867-626SR	10X6	4	1	0	086
867-664SR	12X4	4	1	0	086
867-666SR	12X6	6	1	0	086

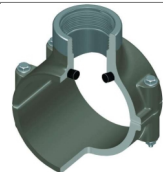
¹ Outlet-sized with Bushing

Clamp-On Saddle x SR Thread Single Outlet PVC Gray

with EPDM O-ring Seal & SS Hardware

2"- 4" 235, 6" 200, 8"-12" 150 psi @ 73°F (23°C)

867S-245SR ¹	2X1/4	1-1/8	1	10	086
867S-247SR	2X1/2	3/4	1	10	086
867S-248SR	2X3/4	7/8	1	10	086
867S-249SR	2X1	1-1/8	1	10	086



Suitable for Oil-Free air handling to 25 psi, not for distribution of compressed air or gas

JJ DOWNS INDUSTRIAL PLASTICS INC.

416.236.1884 Toronto, ON JJDOWNS.COM



Schedule 80 PVC Product
Clamp-On Saddles

Clamp-On Saddles

Part Number	Size	Hole Saw Dia	Std Pk	Mstr Ctn	Prod Code
Clamp-On Saddle x SR Thread Single Outlet PVC Gray (continued) with EPDM O-ring Seal & SS Hardware					
867S-250SR	2X1-1/4	1-1/2	1	10	086
867S-251SR	2X1-1/2	1-1/2	1	10	086
867S-291SR	2-1/2X1-1/2	1-3/4	1	10	086
867S-331SR ¹	3X1/4	1-1/8	1	10	086
867S-333SR ¹	3X1/2	7/8	1	10	086
867S-334SR	3X3/4	7/8	1	10	086
867S-335SR	3X1	1-1/8	1	10	086
867S-336SR ¹	3X1-1/4	2-1/4	1	10	086
867S-337SR ¹	3X1-1/2	2-1/4	1	10	086
867S-338SR	3X2	2-1/4	1	10	086
867S-413SR	4X1/4		1	8	086
867S-415SR ¹	4X1/2	1-1/8	1	10	086
867S-416SR ¹	4X3/4	1-1/8	1	10	086
867S-417SR	4X1	1-1/8	1	8	086
867S-418SR ¹	4X1-1/4	1-3/4	1	8	086
867S-419SR	4X1-1/2	1-3/4	1	8	086
867S-420SR	4X2	2-1/4	1	8	086
867S-421SR ¹	4X2-1/2	3	1	4	086
867S-422SR	4X3	3	1	4	086
867S-521SR ¹	6X1/4	1-1/8	1	8	086
867S-523SR ¹	6X1/2	1-1/8	1	4	086
867S-524SR ¹	6X3/4	1-1/8	1	4	086
867S-525SR	6X1	1-1/8	1	4	086
867S-526SR ¹	6X1-1/4	2-1/4	1	4	086
867S-527SR ¹	6X1-1/2	2-1/4	1	4	086
867S-528SR	6X2	2-1/4	1	4	086
867S-529SR ¹	6X2-1/2	3	1	4	086
867S-530SR	6X3	3	1	4	086
867S-532SR	6X4	4	1	4	086
867S-571SR ¹	8X1/4	4	1	0	086
867S-573SR ¹	8X1/2	4	1	0	086
867S-574SR ¹	8X3/4	4	1	0	086
867S-575SR ¹	8X1	4	1	0	086
867S-576SR ¹	8X1-1/4	4	1	0	086
867S-577SR ¹	8X1-1/2	4	1	0	086
867S-578SR ¹	8X2	4	1	0	086
867S-579SR ¹	8X2-1/2	4	1	0	086
867S-580SR ¹	8X3	4	1	0	086
867S-582SR	8X4	4	1	0	086
867S-585SR	8X6	6	1	0	086
867S-624SR	10X4	4	1	0	086
867S-626SR	10X6	6	1	0	086
867S-664SR	12X4	4	1	0	086
867S-666SR	12X6	6	1	0	086

¹ Outlet-sized with Bushing

Part Number	Size	Hole Saw Dia	Std Pk	Mstr Ctn	Prod Code
-------------	------	--------------	--------	----------	-----------

Clamp-On Saddle x Socket Double Outlet PVC Gray

with FKM O-ring Seal & Zinc-Plated Hardware



2"- 4" 235, 6" 200, 8"-12" 150 psi @ 73°F (23°C)

868V-247	2X1/2	3/4	1	10	086
868V-248	2X3/4	7/8	1	10	086
868V-249	2X1	1-1/8	1	10	086
868V-250	2X1-1/4	1-1/2	1	10	086
868V-251	2X1-1/2	1-1/2	1	10	086
868V-291	2-1/2X1-1/2	1-3/4	1	10	086
868V-333 ¹	3X1/2	7/8	1	10	086
868V-334	3X3/4	7/8	1	10	086
868V-335	3X1	1-1/8	1	10	086
868V-336 ¹	3X1-1/4	2-1/4	1	10	086
868V-337 ¹	3X1-1/2	2-1/4	1	10	086
868V-338	3X2	2-1/4	1	10	086
868V-415 ¹	4X1/2	1-1/8	1	10	086
868V-416 ¹	4X3/4	1-1/8	1	10	086
868V-417	4X1	1-1/8	1	8	086
868V-418 ¹	4X1-1/4	1-3/4	1	8	086
868V-419	4X1-1/2	1-3/4	1	8	086
868V-420	4X2	2-1/4	1	8	086
868V-421 ¹	4X2-1/2	3	1	4	086
868V-422	4X3	3	1	4	086
868V-523 ¹	6X1/2	1-1/8	1	4	086
868V-524 ¹	6X3/4	1-1/8	1	4	086
868V-525	6X1	1-1/8	1	4	086
868V-526 ¹	6X1-1/4	2-1/4	1	4	086
868V-527 ¹	6X1-1/2	2-1/4	1	4	086
868V-528	6X2	2-1/4	1	4	086
868V-529 ¹	6X2-1/2	3	1	4	086
868V-530	6X3	3	1	4	086
868V-532	6X4	4	1	4	086
868V-573 ¹	8X1/2	4	1	0	086
868V-574 ¹	8X3/4	4	1	0	086
868V-575 ¹	8X1	4	1	0	086
868V-576 ¹	8X1-1/4	4	1	0	086
868V-577 ¹	8X1-1/2	4	1	0	086
868V-578 ¹	8X2	4	1	0	086
868V-579 ¹	8X2-1/2	4	1	0	086
868V-580 ¹	8X3	4	1	0	086
868V-582	8X4	4	1	0	086
868V-585	8X6	6	1	0	086
868V-624	10X4	4	1	0	086
868V-626	10X6	6	1	0	086
868V-664	12X4	4	1	0	086
868V-666	12X6	6	1	0	086

¹ Outlet-sized with Bushing

Suitable for Oil-Free air handling to 25 psi, not for distribution of compressed air or gas

JJ DOWNS INDUSTRIAL PLASTICS INC.

international association
of plastics distribution

416.236.1884 Toronto, ON JJDOWNS.COM



Schedule 80 PVC Product
Clamp-On Saddles

Clamp-On Saddles

Part Number	Size	Hole Saw Dia	Std Pk	Mstr Ctn	Prod Code
-------------	------	--------------	--------	----------	-----------

Clamp-On Saddle x Socket Double Outlet PVC Gray

with FKM O-ring Seal & SS Hardware

2"- 4" 235, 6" 200, 8"-12" 150 psi @ 73°F (23°C)

868SV-247	2X1/2	3/4	1	10	086
868SV-248	2X3/4	7/8	1	10	086
868SV-249	2X1	1-1/8	1	10	086
868SV-250	2X1-1/4	1-1/2	1	10	086
868SV-251	2X1-1/2	1-1/2	1	10	086
868SV-291	2-1/2X1-1/2	1-3/4	1	10	086
868SV-333 ¹	3X1/2	7/8	1	10	086
868SV-334	3X3/4	7/8	1	10	086
868SV-335	3X1	1-1/8	1	10	086
868SV-336 ¹	3X1-1/4	2-1/4	1	10	086
868SV-337 ¹	3X1-1/2	2-1/4	1	10	086
868SV-338	3X2	2-1/4	1	10	086
868SV-415 ¹	4X1/2	1-1/8	1	10	086
868SV-416 ¹	4X3/4	1-1/8	1	10	086
868SV-417	4X1	1-1/8	1	8	086
868SV-418 ¹	4X1-1/4	1-3/4	1	8	086
868SV-419	4X1-1/2	1-3/4	1	8	086
868SV-420	4X2	2-1/4	1	16	086
868SV-421 ¹	4X2-1/2	3	1	4	086
868SV-422	4X3	3	1	4	086
868SV-523 ¹	6X1/2	1-1/8	1	4	086
868SV-524 ¹	6X3/4	1-1/8	1	4	086
868SV-525	6X1	1-1/8	1	4	086
868SV-526 ¹	6X1-1/4	2-1/4	1	4	086
868SV-527 ¹	6X1-1/2	2-1/4	1	4	086
868SV-528	6X2	2-1/4	1	4	086
868SV-529 ¹	6X2-1/2	3	1	4	086
868SV-530	6X3	3	1	4	086
868SV-532	6X4	4	1	4	086
868SV-573 ¹	8X1/2	4	1	0	086
868SV-574 ¹	8X3/4	4	1	0	086
868SV-575 ¹	8X1	4	1	0	086
868SV-576 ¹	8X1-1/4	4	1	0	086
868SV-577 ¹	8X1-1/2	4	1	0	086
868SV-578 ¹	8X2	4	1	0	086
868SV-579 ¹	8X2-1/2	4	1	0	086
868SV-580 ¹	8X3	4	1	0	086
868SV-582	8X4	4	1	0	086
868SV-585	8X6	6	1	0	086
868SV-624	10X4	4	1	0	086
868SV-626	10X6	6	1	0	086
868SV-664	12X4	4	1	0	086
868SV-666	12X6	6	1	0	086

¹ Outlet-sized with Bushing

Part Number	Size	Hole Saw Dia	Std Pk	Mstr Ctn	Prod Code
-------------	------	--------------	--------	----------	-----------

Clamp-On Saddle x Socket Double Outlet PVC Gray

with EPDM O-ring Seal & Zinc-Plated Hardware

2"- 4" 235, 6" 200, 8"-12" 150 psi @ 73°F (23°C)

868-247	2X1/2	3/4	1	10	086
868-248	2X3/4	7/8	1	10	086
868-249	2X1	1-1/8	1	10	086
868-250	2X1-1/4	1-1/2	1	10	086
868-251	2X1-1/2	1-1/2	1	10	086
868-291	2-1/2X1-1/2	1-3/4	1	10	086
868-333 ¹	3X1/2	7/8	1	10	086
868-334	3X3/4	7/8	1	10	086
868-335	3X1	1-1/8	1	10	086
868-336 ¹	3X1-1/4	2-1/4	1	10	086
868-337 ¹	3X1-1/2	2-1/4	1	10	086
868-338	3X2	2-1/4	1	10	086
868-415 ¹	4X1/2	1-1/8	1	10	086
868-416 ¹	4X3/4	1-1/8	1	10	086
868-417	4X1	1-1/8	1	8	086
868-418 ¹	4X1-1/4	1-3/4	1	8	086
868-419	4X1-1/2	1-3/4	1	8	086
868-420	4X2	2-1/4	1	8	086
868-421 ¹	4X2-1/2	3	1	4	086
868-422	4X3	3	1	4	086
868-523 ¹	6X1/2	1-1/8	1	4	086
868-524 ¹	6X3/4	1-1/8	1	4	086
868-525	6X1	1-1/8	1	4	086
868-526 ¹	6X1-1/4	2-1/4	1	4	086
868-527 ¹	6X1-1/2	2-1/4	1	4	086
868-528	6X2	2-1/4	1	4	086
868-529 ¹	6X2-1/2	3	1	4	086
868-530	6X3	3	1	4	086
868-532	6X4	4	1	4	086
868-573 ¹	8X1/2	4	1	0	086
868-574 ¹	8X3/4	4	1	0	086
868-575 ¹	8X1	4	1	0	086
868-576 ¹	8X1-1/4	4	1	0	086
868-577 ¹	8X1-1/2	4	1	0	086
868-578 ¹	8X2	4	1	0	086
868-579 ¹	8X2-1/2	4	1	0	086
868-580 ¹	8X3	4	1	0	086
868-582	8X4	4	1	0	086
868-585	8X6	6	1	0	086
868-624	10X4	4	1	0	086
868-626	10X6	6	1	0	086
868-664	12X4	4	1	0	086
868-666	12X6	6	1	0	086

¹ Outlet-sized with Bushing

Suitable for Oil-Free air handling to 25 psi, not for distribution of compressed air or gas

JJ DOWNS INDUSTRIAL PLASTICS INC.

416.236.1884
Toronto, ON
JJDOWNS.COM



Schedule 80 PVC Product
Clamp-On Saddles

Clamp-On Saddles

Part Number	Size	Hole Saw Dia	Std Pk	Mstr Ctn	Prod Code
-------------	------	--------------	--------	----------	-----------

Clamp-On Saddle x Socket Double Outlet PVC Gray

with EPDM O-ring Seal & SS Hardware



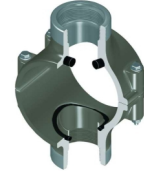
2"- 4" 235, 6" 200, 8"-12" 150 psi @ 73°F (23°C)					
Part Number	Size	Hole Saw Dia	Std Pk	Mstr Ctn	Prod Code
868S-247	2X1/2	3/4	1	10	086
868S-248	2X3/4	7/8	1	10	086
868S-249	2X1	1-1/8	1	10	086
868S-250	2X1-1/4	1-1/2	1	10	086
868S-251	2X1-1/2	1-1/2	1	10	086
868S-291	2-1/2X1-1/2	1-3/4	1	10	086
868S-333 ¹	3X1/2	7/8	1	10	086
868S-334	3X3/4	7/8	1	10	086
868S-335	3X1	1-1/8	1	10	086
868S-336 ¹	3X1-1/4	2-1/4	1	10	086
868S-337 ¹	3X1-1/2	2-1/4	1	10	086
868S-338	3X2	2-1/4	1	10	086
868S-415 ¹	4X1/2	1-1/8	1	10	086
868S-416 ¹	4X3/4	1-1/8	1	10	086
868S-417	4X1	1-1/8	1	8	086
868S-418 ¹	4X1-1/4	1-3/4	1	8	086
868S-419	4X1-1/2	1-3/4	1	8	086
868S-420	4X2	2-1/4	1	8	086
868S-421 ¹	4X2-1/2	3	1	4	086
868S-422	4X3	3	1	4	086
868S-523 ¹	6X1/2	1-1/8	1	4	086
868S-524 ¹	6X3/4	1-1/8	1	4	086
868S-525	6X1	1-1/8	1	4	086
868S-526 ¹	6X1-1/4	2-1/4	1	4	086
868S-527 ¹	6X1-1/2	2-1/4	1	4	086
868S-528	6X2	2-1/4	1	4	086
868S-529 ¹	6X2-1/2	3	1	4	086
868S-530	6X3	3	1	4	086
868S-532	6X4	4	1	4	086
868S-573 ¹	8X1/2	4	1	0	086
868S-574 ¹	8X3/4	4	1	0	086
868S-575 ¹	8X1	4	1	0	086
868S-576 ¹	8X1-1/4	4	1	0	086
868S-577 ¹	8X1-1/2	4	1	0	086
868S-578 ¹	8X2	4	1	0	086
868S-579 ¹	8X2-1/2	4	1	0	086
868S-580 ¹	8X3	4	1	0	086
868S-582	8X4	4	1	0	086
868S-585	8X6	6	1	0	086
868S-624	10X4	4	1	0	086
868S-626	10X6	6	1	0	086
868S-664	12X4	4	1	0	086
868S-666	12X6	6	1	0	086

¹ Outlet-sized with Bushing

Part Number	Size	Hole Saw Dia	Std Pk	Mstr Ctn	Prod Code
-------------	------	--------------	--------	----------	-----------

Clamp-On Saddle x SR Thread Double Outlet PVC Gray

with FKM O-ring Seal & Zinc-Plated Hardware



2"- 4" 235, 6" 200, 8"-12" 150 psi @ 73°F (23°C)

869V-247SR	2X1/2	3/4	1	10	086
869V-248SR	2X3/4	7/8	1	10	086
869V-249SR	2X1	1-1/8	1	10	086
869V-250SR	2X1-1/4	1-1/2	1	10	086
869V-251SR	2X1-1/2	1-1/2	1	10	086
869V-291SR	2-1/2X1-1/2	1-3/4	1	10	086
869V-333SR ¹	3X1/2	7/8	1	10	086
869V-334SR	3X3/4	7/8	1	10	086
869V-335SR	3X1	1-1/8	1	10	086
869V-336SR ¹	3X1-1/4	2-1/4	1	10	086
869V-337SR ¹	3X1-1/2	2-1/4	1	10	086
869V-338SR	3X2	2-1/4	1	10	086
869V-415SR ¹	4X1/2	1-1/8	1	10	086
869V-416SR ¹	4X3/4	1-1/8	1	10	086
869V-417SR	4X1	1-1/8	1	8	086
869V-418SR ¹	4X1-1/4	1-3/4	1	8	086
869V-419SR	4X1-1/2	1-3/4	1	8	086
869V-420SR	4X2	2-1/4	1	8	086
869V-421SR ¹	4X2-1/2	3	1	4	086
869V-422SR	4X3	3	1	4	086
869V-523SR ¹	6X1/2	1-1/8	1	4	086
869V-524SR ¹	6X3/4	1-1/8	1	4	086
869V-525SR	6X1	1-1/8	1	4	086
869V-526SR ¹	6X1-1/4	2-1/4	1	4	086
869V-527SR ¹	6X1-1/2	2-1/4	1	4	086
869V-528SR	6X2	2-1/4	1	4	086
869V-529SR ¹	6X2-1/2	3	1	4	086
869V-530SR	6X3	3	1	4	086
869V-532SR	6X4	4	1	4	086
869V-573SR ¹	8X1/2	4	1	0	086
869V-574SR ¹	8X3/4	4	1	0	086
869V-575SR ¹	8X1	4	1	0	086
869V-576SR ¹	8X1-1/4	4	1	0	086
869V-577SR ¹	8X1-1/2	4	1	0	086
869V-578SR ¹	8X2	4	1	0	086
869V-579SR ¹	8X2-1/2	4	1	0	086
869V-580SR ¹	8X3	4	1	0	086
869V-582SR	8X4	4	1	0	086
869V-585SR	8X6	6	1	0	086
869V-624SR	10X4	4	1	0	086
869V-626SR	10X6	6	1	0	086
869V-664SR	12X4	4	1	0	086
869V-666SR	12X6	6	1	0	086

¹ Outlet-sized with Bushing

Suitable for Oil-Free air handling to 25 psi, not for distribution of compressed air or gas

JJ DOWNS INDUSTRIAL PLASTICS INC.

416.236.1884
Toronto, ON
JJDOWNS.COM



Schedule 80 PVC Product
Clamp-On Saddles

Clamp-On Saddles

Part Number	Size	Hole Saw Dia	Std Pk	Mstr Ctn	Prod Code
-------------	------	--------------	--------	----------	-----------

**Clamp-On Saddle x SR Thread Double Outlet
PVC Gray**

with FKM O-ring Seal & SS Hardware



2"- 4" 235, 6" 200, 8"-12" 150 psi @ 73°F (23°C)

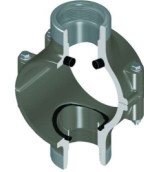
869SV-247SR	2X1/2	3/4	1	10	086
869SV-248SR	2X3/4	7/8	1	10	086
869SV-249SR	2X1	1-1/8	1	10	086
869SV-250SR	2X1-1/4	1-1/2	1	10	086
869SV-251SR	2X1-1/2	1-1/2	1	10	086
869SV-291SR	2-1/2X1-1/2	1-3/4	1	10	086
869SV-333SR ¹	3X1/2	7/8	1	10	086
869SV-335SR	3X1	1-1/8	1	10	086
869SV-334SR	3X3/4	7/8	1	10	086
869SV-336SR ¹	3X1-1/4	2-1/4	1	10	086
869SV-337SR ¹	3X1-1/2	2-1/4	1	10	086
869SV-338SR	3X2	2-1/4	1	10	086
869SV-415SR ¹	4X1/2	1-1/8	1	10	086
869SV-416SR ¹	4X3/4	1-1/8	1	10	086
869SV-417SR	4X1	1-1/8	1	8	086
869SV-418SR ¹	4X1-1/4	1-3/4	1	8	086
869SV-419SR	4X1-1/2	1-3/4	1	8	086
869SV-420SR	4X2	2-1/4	1	8	086
869SV-421SR ¹	4X2-1/2	3	1	4	086
869SV-422SR	4X3	3	1	4	086
869SV-523SR ¹	6X1/2	1-1/8	1	4	086
869SV-524SR ¹	6X3/4	1-1/8	1	4	086
869SV-525SR	6X1	1-1/8	1	4	086
869SV-526SR ¹	6X1-1/4	2-1/4	1	4	086
869SV-527SR ¹	6X1-1/2	2-1/4	1	4	086
869SV-528SR	6X2	2-1/4	1	4	086
869SV-529SR ¹	6X2-1/2	3	1	4	086
869SV-530SR	6X3	3	1	4	086
869SV-532SR	6X4	4	1	4	086
869SV-573SR ¹	8X1/2	4	1	0	086
869SV-574SR ¹	8X3/4	4	1	0	086
869SV-575SR ¹	8X1	4	1	0	086
869SV-576SR ¹	8X1-1/4	4	1	0	086
869SV-577SR ¹	8X1-1/2	4	1	0	086
869SV-578SR ¹	8X2	4	1	0	086
869SV-579SR ¹	8X2-1/2	4	1	0	086
869SV-580SR ¹	8X3	4	1	0	086
869SV-582SR	8X4	4	1	0	086
869SV-585SR	8X6	6	1	0	086
869SV-624SR	10X4	4	1	0	086
869SV-626SR	10X6	4	1	0	086
869SV-664SR	12X4	4	1	0	086
869SV-666SR	12X6	6	1	0	086

¹ Outlet-sized with Bushing

Part Number	Size	Hole Saw Dia	Std Pk	Mstr Ctn	Prod Code
-------------	------	--------------	--------	----------	-----------

**Clamp-On Saddle x SR Thread Double Outlet
PVC Gray**

**with EPDM O-ring Seal & Zinc-Plated
Hardware**



2"- 4" 235, 6" 200, 8"-12" 150 psi @ 73°F (23°C)

869-247SR	2X1/2	3/4	1	10	086
869-248SR	2X3/4	7/8	1	10	086
869-249SR	2X1	1-1/8	1	10	086
869-250SR	2X1-1/4	1-1/2	1	10	086
869-251SR	2X1-1/2	1-1/2	1	10	086
869-291SR	2-1/2X1-1/2	1-3/4	1	10	086
869-333SR ¹	3X1/2	7/8	1	10	086
869-334SR	3X3/4	7/8	1	10	086
869-335SR	3X1	1-1/8	1	10	086
869-336SR ¹	3X1-1/4	1-1/8	1	10	086
869-337SR ¹	3X1-1/2	2-1/4	1	10	086
869-338SR	3X2	2-1/4	1	10	086
869-415SR ¹	4X1/2	1-1/8	1	10	086
869-416SR ¹	4X3/4	1-1/8	1	10	086
869-417SR	4X1	1-1/8	1	8	086
869-418SR ¹	4X1-1/4	1-3/4	1	8	086
869-419SR	4X1-1/2	1-3/4	1	8	086
869-420SR	4X2	2-1/4	1	8	086
869-421SR ¹	4X2-1/2	3	1	4	086
869-422SR	4X3	3	1	4	086
869-523SR ¹	6X1/2	1-1/8	1	4	086
869-524SR ¹	6X3/4	1-1/8	1	4	086
869-525SR	6X1	1-1/8	1	4	086
869-526SR ¹	6X1-1/4	2-1/4	1	4	086
869-527SR ¹	6X1-1/2	2-1/4	1	4	086
869-528SR	6X2	2-1/4	1	4	086
869-529SR ¹	6X2-1/2	3	1	4	086
869-530SR	6X3	3	1	4	086
869-532SR	6X4	4	1	4	086
869-573SR ¹	8X1/2	4	1	0	086
869-574SR ¹	8X3/4	4	1	0	086
869-575SR ¹	8X1	4	1	0	086
869-576SR ¹	8X1-1/4	4	1	0	086
869-577SR ¹	8X1-1/2	4	1	0	086
869-578SR ¹	8X2	4	1	0	086
869-579SR ¹	8X2-1/2	4	1	0	086
869-580SR ¹	8X3	4	1	0	086
869-582SR	8X4	4	1	0	086
869-585SR	8X6	6	1	0	086
869-624SR	10X4	4	1	0	086
869-626SR	10X6	6	1	0	086
869-664SR	12X4	4	1	0	086
869-666SR	12X6	6	1	0	086

¹ Outlet-sized with Bushing

Suitable for Oil-Free air handling to 25 psi, not for distribution of compressed air or gas

JJ DOWNS INDUSTRIAL PLASTICS INC.

416.236.1884
Toronto, ON
JJDOWNS.COM



Schedule 80 PVC Product
Clamp-On Saddles & Hot-Tap Saddles

Clamp-On Saddles

Part Number	Size	Hole Saw Dia	Std Pk	Mstr Ctn	Prod Code
-------------	------	--------------	--------	----------	-----------

Clamp-On Saddle x SR Thread Double Outlet PVC Gray

with EPDM O-ring Seal & SS Hardware



2"- 4" 235, 6" 200, 8"-12" 150 psi @ 73°F (23°C)

869S-247SR	2X1/2	3/4	1	10	086
869S-248SR	2X3/4	7/8	1	10	086
869S-249SR	2X1	1-1/8	1	10	086
869S-250SR	2X1-1/4	1-1/2	1	10	086
869S-251SR	2X1-1/2	1-1/2	1	10	086
869S-291SR	2-1/2X1-1/2	1-3/4	1	10	086
869S-333SR ¹	3X1/2	7/8	1	10	086
869S-334SR	3X3/4	7/8	1	10	086
869S-335SR	3X1	1-1/8	1	10	086
869S-336SR ¹	3X1-1/4	2-1/4	1	10	086
869S-337SR ¹	3X1-1/2	2-1/4	1	10	086
869S-338SR	3X2	2-1/4	1	10	086
869S-415SR ¹	4X1/2	1-1/8	1	10	086
869S-416SR ¹	4X3/4	1-1/8	1	10	086
869S-417SR	4X1	1-1/8	1	8	086
869S-418SR ¹	4X1-1/4	1-3/4	1	8	086
869S-419SR	4X1-1/2	1-3/4	1	8	086
869S-420SR	4X2	2-1/4	1	8	086
869S-421SR ¹	4X2-1/2	3	1	4	086
869S-422SR	4X3	3	1	4	086
869S-523SR ¹	6X1/2	1-1/8	1	4	086
869S-524SR ¹	6X3/4	1-1/8	1	4	086
869S-525SR	6X1	1-1/8	1	4	086
869S-526SR ¹	6X1-1/4	2-1/4	1	4	086
869S-527SR ¹	6X1-1/2	2-1/4	1	4	086
869S-528SR	6X2	2-1/4	1	4	086
869S-529SR ¹	6X2-1/2	3	1	4	086
869S-530SR	6X3	3	1	4	086
869S-532SR	6X4	4	1	4	086
869S-573SR ¹	8X1/2	4	1	0	086
869S-574SR ¹	8X3/4	4	1	0	086
869S-575SR ¹	8X1	4	1	0	086
869S-576SR ¹	8X1-1/4	4	1	0	086
869S-577SR ¹	8X1-1/2	4	1	0	086
869S-578SR ¹	8X2	4	1	0	086
869S-579SR ¹	8X2-1/2	4	1	0	086
869S-580SR ¹	8X3	4	1	0	086
869S-582SR	8X4	4	1	0	086
869S-585SR	8X6	6	1	0	086
869S-624SR	10X4	4	1	0	086
869S-626SR	10X6	6	1	0	086
869S-664SR	12X4	4	1	0	086
869S-666SR	12X6	6	1	0	086

¹ Outlet-sized with Bushing

Hot-Tap Saddles

Part Number	Size	Std Pk	Mstr Ctn	Prod Code
-------------	------	--------	----------	-----------

Hot-Tap Saddle PVC Gray

EPDM Saddle x Socket (Spigot) Zinc Plated Bolts



2"- 4" 235, 6" 200, 8" 150 psi @ 73°F (23°C)

HT2-248	2X3/4 (1)	1	5	049
HT2-251	2X1-1/2 (2)	1	5	049
HT2-288	2-1/2X3/4 (1)	1	5	049
HT2-291	2-1/2X1-1/2 (2)	1	5	049
HT2-334	3X3/4 (1)	1	5	049
HT2-337	3X1-1/2 (2)	1	5	049
HT2-416	4X3/4 (1)	1	5	049
HT2-419	4X1-1/2 (2)	1	0	049
HT2-524	6X3/4 (1)	1	5	049
HT2-527	6X1-1/2 (2)	1	0	049
HT2-574	8X3/4 (1)	1	0	049
HT2-577	8X1-1/2 (2)	1	0	049

Not intended to convey or dispense water for human consumption through drinking or cooking

Hot-Tap Saddle PVC Gray

EPDM Saddle x Socket (Spigot) SS316 Bolts



2"- 4" 235, 6" 200, 8" 150 psi @ 73°F (23°C)

HT2S-248	2X3/4 (1)	1	5	049
HT2S-251	2X1-1/2 (2)	1	5	049
HT2S-288	2-1/2X3/4 (1)	1	5	049
HT2S-291	2-1/2X1-1/2 (2)	1	5	049
HT2S-334	3X3/4 (1)	1	5	049
HT2S-337	3X1-1/2 (2)	1	5	049
HT2S-416	4X3/4 (1)	1	5	049
HT2S-419	4X1-1/2 (2)	1	0	049
HT2S-524	6X3/4 (1)	1	5	049
HT2S-527	6X1-1/2 (2)	1	0	049
HT2S-574	8X3/4 (1)	1	0	049
HT2S-577	8X1-1/2 (2)	1	0	049

Not intended to convey or dispense water for human consumption through drinking or cooking

Suitable for Oil-Free air handling to 25 psi, not for distribution of compressed air or gas

JJ DOWNS INDUSTRIAL PLASTICS INC.

416.236.1884
Toronto, ON
JJDOWNS.COM



Schedule 80 PVC Product
Hot-Tap Saddles

Hot-Tap Saddles

Part Number	Size	Std Pk	Mstr Ctn	Prod Code
-------------	------	--------	----------	-----------

Hot-Tap Saddle PVC Gray

FKM Saddle x Socket (Spigot) Zinc Plated Bolts



2"- 4" 235, 6" 200, 8" 150 psi @ 73°F (23°C)

HT3-248	2X3/4 (1)	1	5	049
HT3-251	2X1-1/2 (2)	1	5	049
HT3-288	2-1/2X3/4 (1)	1	5	049
HT3-291	2-1/2X1-1/2 (2)	1	5	049
HT3-334	3X3/4 (1)	1	5	049
HT3-337	3X1-1/2 (2)	1	5	049
HT3-416	4X3/4 (1)	1	5	049
HT3-419	4X1-1/2 (2)	1	0	049
HT3-524	6X3/4 (1)	1	5	049
HT3-527	6X1-1/2 (2)	1	0	049
HT3-574	8X3/4 (1)	1	0	049
HT3-577	8X1-1/2 (2)	1	0	049

Not intended to convey or dispense water for human consumption through drinking or cooking

Hot-Tap Saddle PVC Gray

FKM Saddle x Socket (Spigot) SS316 Bolts



2"- 4" 235, 6" 200, 8" 150 psi @ 73°F (23°C)

HT3S-248	2X3/4 (1)	1	5	049
HT3S-251	2X1-1/2 (2)	1	5	049
HT3S-288	2-1/2X3/4 (1)	1	5	049
HT3S-291	2-1/2X1-1/2 (2)	1	5	049
HT3S-334	3X3/4 (1)	1	5	049
HT3S-337	3X1-1/2 (2)	1	5	049
HT3S-416	4X3/4 (1)	1	5	049
HT3S-419	4X1-1/2 (2)	1	0	049
HT3S-524	6X3/4 (1)	1	5	049
HT3S-527	6X1-1/2 (2)	1	0	049
HT3S-574	8X3/4 (1)	1	0	049
HT3S-577	8X1-1/2 (2)	1	0	049

Not intended to convey or dispense water for human consumption through drinking or cooking

Part Number	Size	Std Pk	Mstr Ctn	Prod Code
-------------	------	--------	----------	-----------

Hot-Tap Saddle PVC Gray

EPDM with Stainless Steel Cutter & Bolts



2"- 4" 235, 6" 200, 8" 150 psi @ 73°F (23°C)

HTS2S-248	2X3/4 (1)	1	5	049
HTS2S-251	2X1-1/2 (2)	1	5	049
HTS2S-288	2-1/2X3/4 (1)	1	5	049
HTS2S-291	2-1/2X1-1/2 (2)	1	5	049
HTS2S-334	3X3/4 (1)	1	5	049
HTS2S-337	3X1-1/2 (2)	1	5	049
HTS2S-416	4X3/4 (1)	1	5	049
HTS2S-419	4X1-1/2 (2)	1	0	049
HTS2S-524	6X3/4 (1))	1	5	049
HTS2S-527	6X1-1/2 (2)	1	0	049
HTS2S-574	8X3/4 (1)	1	0	049
HTS2S-577	8X1-1/2 (2)	1	0	049

Lead Free

Hot-Tap Saddle PVC Gray

FKM with Stainless Steel Cutter & Bolts



2"- 4" 235, 6" 200, 8" 150 psi @ 73°F (23°C)

HTS3S-248	2X3/4 (1)	1	5	049
HTS3S-251	2X1-1/2 (2)	1	5	049
HTS3S-288	2-1/2X3/4 (1)	1	5	049
HTS3S-291	2-1/2X1-1/2 (2)	1	5	049
HTS3S-334	3X3/4 (1)	1	5	049
HTS3S-337	3X1-1/2 (2)	1	5	049
HTS3S-416	4X3/4 (1)	1	5	049
HTS3S-419	4X1-1/2 (2)	1	0	049
HTS3S-524	6X3/4 (1)	1	5	049
HTS3S-527	6X1-1/2 (2)	1	0	049
HTS3S-574	8X3/4 (1)	1	0	049
HTS3S-577	8X1-1/2(2)	1	0	049

Lead Free

Suitable for Oil-Free air handling to 25 psi, not for distribution of compressed air or gas

JJ DOWNS INDUSTRIAL PLASTICS INC.

416.236.1884
Toronto, ON
JJDOWNS.COM