



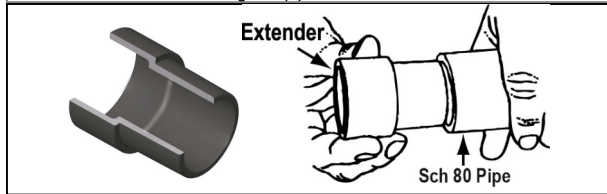
Schedule 80 PVC Product  
**Schedule 80 Repair Fittings & Compression Couplings  
 & GripLoc™ Coupling**

**Schedule 80 Repair Fittings**

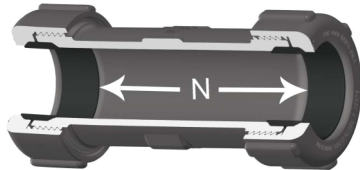
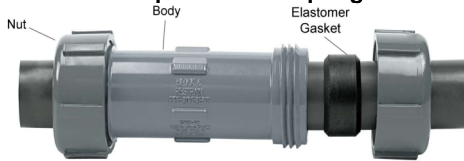
**Pipe Extenders**

Part Number	Size	Std Pk	Mstr Ctn	Prod Code
S0801-20F	2 - 2" EXT	10	0	394
S0801-25F	2-1/2 - 2" EXT	8	0	394
S0801-30F	3 - 2-1/2" EXT	1	8	394
S0801-40F	4 - 2-5/8" EXT	1	12	394
S0801-60F	6 - 3-1/2" EXT	10	0	394
S0801-80F	8 - 5" EXT	2	0	394
S0801-100F	10 - 5-1/2" EXT	1	0	394
S0801-120F	12 - 6-1/2" EXT	1	0	394
S0801-140F	14 - 7-1/4" EXT	1	0	394
S0801-160F	16 - 9" EXT	1	0	394
S0801-180F	18 - 10" EXT	1	0	394

Solvent Cement I.D. Spigot into Pipe O.D.  
 "EXT" indicates MINIMUM length of pipe extension added



**Compression Couplings**



- Designed for Quick Connections, System Modifications or Repairs
- Completely Redesigned for Improved Versatility
- Easy-Thread Compression Nut
- New Spigot Conversion Capability
- Full Service Pressure Rating 1/2"-2-1/2"=200 psi, 3"-6"=150 psi
- NSF® Certified for Potable Water Use

**Compression Coupling, PVC Gray**

Part Number	Size	Gasket to Gasket - N	Std Pk	Mstr Ctn	Prod Code
S110-05G	1/2	3-3/8	28	0	024

**Elastomer Gasket**

**Compression Coupling, PVC Gray (continued)**

Part Number	Size	Gasket to Gasket - N	Std Pk	Mstr Ctn	Prod Code
<b>Elastomer Gasket</b>					
S110-07G	3/4	3-9/16	24	0	024
S110-10G	1	3-3/4	20	0	024
S110-12G	1-1/4	4-3/32	10	0	024
S110-15G	1-1/2	4-21/32	16	0	024
S110-20G	2	5-3/32	12	0	024
S110-25G	2-1/2	5-7/8	6	0	024
S110-30G	3	6-3/16	4	0	024
S110-40G	4	7-3/4	4	0	024
S110-60G	6	7-7/8	1	0	024

**N = Gasket to Gasket**

Part Number	Size	Std Pk	Mstr Ctn	Prod Code
-------------	------	--------	----------	-----------

**Compression Coupling Nut Wrenches**

**Fits all Spears® Compression Fittings**



CCW-005	1/2	1	50	299
CCW-007	3/4	1	50	299
CCW-010	1	1	50	299
CCW-012	1-1/4	1	50	299
CCW-015	1-1/2	1	50	299
CCW-020 <sup>1</sup>	2	1	50	299
CCW-030 <sup>2</sup>	3	1	25	299
CCW-060	6	8	0	299

<sup>1</sup> CCW-20 - Wrench also fits 2-1/2" Coupling Body

<sup>2</sup> CCW-30 - Wrench also fits 4" Coupling Body

**Compression Coupling Nut Wrench Set**

Part Number	Size	Std Pk	Mstr Ctn	Prod Code
<b>Fits all Spears® Compression Fittings</b>				
CCW-000	Set	1	25	299

Complete Set of Wrenches, Sizes 1/2 - 3

**GripLoc™ Coupling**

**GripLoc™ Coupling**

**WARNING: DO NOT INSERT FINGERS  
 For Cold Water Only - EPDM Gasket  
 Pressure Rated to 235 psi @ 73°F**



Uses No Solvent Cement

GL429-005G	1/2	1	25	137
GL429-007G	3/4	1	36	137
GL429-010G	1	1	20	137
GL429-012G	1-1/4	1	15	137
GL429-015G	1-1/2	1	15	137
GL429-020G	2	1	10	137

**GripLoc™ IPS Size Release Tool**

**For Removal of GripLoc™ Fittings**



GLIPSRT-005	1/2	1	50	299
-------------	-----	---	----	-----

**Suitable for Oil-Free air handling to 25 psi, not for distribution of compressed air or gas**

International Association of Plastics Distribution

**JJ DOWNS INDUSTRIAL PLASTICS INC.**

416.236.1884      Toronto, ON      JJDOWNS.COM



Schedule 80 PVC Product  
**GripLoc™ Coupling & GripLoc™ Cap**

**GripLoc™ Coupling**

Part Number	Size	Std Pk	Mstr Ctn	Prod Code
-------------	------	--------	----------	-----------

**GripLoc™ IPS Size Release Tool** (continued)

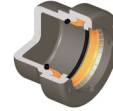
**For Removal of GripLoc™ Fittings**

GLIPSRT-007	3/4	1	50	299
GLIPSRT-010	1	1	50	299

**GripLoc™ Cap**

**GripLoc™ Cap**

**WARNING: DO NOT INSERT FINGERS**  
**For Cold Water Only - EPDM Gasket**  
**Pressure Rated to 235 psi @ 73°F**



Uses No Solvent Cement

GL447-005G	1/2	25	150	137
GL447-007G	3/4	10	50	137
GL447-010G	1	1	50	137
GL447-012G	1-1/4	1	25	137
GL447-015G	1-1/2	10	160	137
GL447-020G	2	1	25	137

Suitable for Oil-Free air handling to 25 psi, not for distribution of compressed air or gas

	 <small>member international association of plastics distribution</small>
JJ DOWNS INDUSTRIAL PLASTICS INC.	
416.236.1884	Toronto, ON
<a href="http://JJDOWNNS.COM">JJDOWNNS.COM</a>	