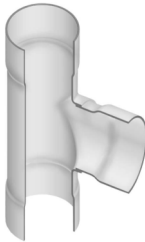




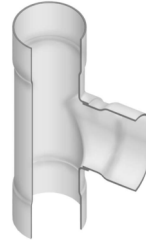
Irrigation & Turf Product
PVC 80, 100 & 125 PSI PIP Fabricated Fittings

Tees

Size	80 PSI	100 PSI	125 PSI
	Prod Code:310 Part Number	Prod Code:320 Part Number	Prod Code:330 Part Number
Tee (Socket x Socket x Socket)			
6	290-102502	300-102502	3301-060P
6X2	290-102499	300-102499	3301-528P
6X3	290-102500	300-102500	3301-530P
6X4	290-102501	300-102501	3301-532P
8	290-102507	300-102507	3301-080P
8X2	290-102503	300-102503	3301-578P
8X3	290-102504	300-102504	3301-580P
8X4	290-102505	300-102505	3301-582P
8X6	290-102506	300-102506	3301-585P
10	290-102513	300-102513	3301-100P
10X2	290-102508	300-102508	3301-621P
10X3	290-102509	300-102509	3301-623P
10X4	290-102510	300-102510	3301-624P
10X6	290-102511	300-102511	3301-626P
10X8	290-102512	300-102512	3301-628P
12	290-102520	300-102520	3301-120P
12X2	290-102514	300-102514	3301-661P
12X3	290-102515	300-102515	3301-663P
12X4	290-102516	300-102516	3301-664P
12X6	290-102517	300-102517	3301-666P
12X8	290-102518	300-102518	3301-668P
12X10	290-102519	300-102519	3301-670P
15	290-102528	300-102528	3301-150P
15X2	290-102521	300-102521	3301-721P
15X3	290-102522	300-102522	3301-723P
15X4	290-102523	300-102523	3301-724P
15X6	290-102524	300-102524	3301-726P
15X8	290-102525	300-102525	3301-728P
15X10	290-102526	300-102526	3301-730P
15X12	290-102527	300-102527	3301-732P
18	290-102537	300-102537	3301-180P
18X2	290-102529	300-102529	3301-781P
18X3	290-102530	300-102530	3301-783P
18X4	290-102531	300-102531	3301-784P
18X6	290-102532	300-102532	3301-786P
18X8	290-102533	300-102533	3301-788P
18X10	290-102534	300-102534	3301-790P
18X12	290-102535	300-102535	3301-792P
18X15	290-102536	300-102536	3301-795P
21	290-102558	300-102558	3301-210P
21X2	290-102548	300-102548	3301-841P
21X3	290-102549	300-102549	3301-843P
21X4	290-102550	300-102550	3301-844P
21X6	290-102551	300-102551	3301-846P
21X8	290-102552	300-102552	3301-848P
21X10	290-102553	300-102553	3301-850P
21X12	290-102554	300-102554	3301-852P
21X15	290-102555	300-102555	3301-855P
21X18	290-102556	300-102556	3301-858P
24	290-102570	300-102570	3301-240P
24X2	290-102559	300-102559	3301-901P
24X3	290-102560	300-102560	3301-903P
24X4	290-102561	300-102561	3301-904P
24X6	290-102562	300-102562	3301-906P
24X8	290-102563	300-102563	3301-908P
24X10	290-102564	300-102564	3301-910P



Size	80 PSI	100 PSI	125 PSI
	Prod Code:310 Part Number	Prod Code:320 Part Number	Prod Code:330 Part Number
Tee (Socket x Socket x Socket) (continued)			
24X12	290-102565	300-102565	3301-912P
24X15	290-102566	300-102566	3301-915P
24X18	290-102567	300-102567	3301-918P
24X21	290-102569	300-102569	3301-921P
27	2901-270	3001-270	3301-270P
27X4	2901-934	3001-934	3301-934P
27X6	2901-936	3001-936	3301-936P
27X8	2901-938	3001-938	3301-938P
27X10	2901-940	3001-940	3301-940P
27X12	2901-942	3001-942	3301-942P
27X15	2901-945	3001-945	3301-945P
27X18	2901-948	3001-948	3301-948P
27X21	2901-951	3001-951	3301-951P
27X24	2901-954	3001-954	3301-954P



Size	80 PSI	100 PSI	125 PSI
	Prod Code:310 Part Number	Prod Code:320 Part Number	Prod Code:330 Part Number
Tee (Gasket x Spigot x Gasket)			
6	290-103062	300-103062	3301-060232P
6X4	290-103061	300-103061	3301-53232P
8	290-103067	300-103067	3301-080232P
8X4	290-103065	300-103065	3301-58232P
8X6	290-103066	300-103066	3301-585232P
10	290-103073	300-103073	3301-100232P
10X4	290-103070	300-103070	3301-624232P
10X6	290-103071	300-103071	3301-626232P
10X8	290-103072	300-103072	3301-628232P
12	290-103080	300-103080	3301-120232P
12X4	290-103076	300-103076	3301-664232P
12X6	290-103077	300-103077	3301-666232P
12X8	290-103078	300-103078	3301-668232P
12X10	290-103079	300-103079	3301-670232P
15	290-103088	300-103088	3301-150232P
15X4	290-103083	300-103083	3301-724232P
15X6	290-103084	300-103084	3301-726232P
15X8	290-103085	300-103085	3301-728232P
15X10	290-103086	300-103086	3301-730232P
15X12	290-103087	300-103087	3301-732232P
18	290-103097	300-103097	3301-180232P
18X4	290-103091	300-103091	3301-784232P
18X6	290-103092	300-103092	3301-786232P
18X8	290-103093	300-103093	3301-788232P
18X10	290-103094	300-103094	3301-790232P
18X12	290-103095	300-103095	3301-792232P
18X15	290-103096	300-103096	3301-795232P
21	2901-210232	3001-210232	3301-210232P
21X4	290-103110	300-103110	3301-844232P
21X6	290-103111	300-103111	3301-846232P
21X8	290-103112	300-103112	3301-848232P
21X10	290-103113	300-103113	3301-850232P
21X12	290-103114	300-103114	3301-852232P
21X15	290-103115	300-103115	3301-855232P
21X18	290-103116	300-103116	3301-858232P
24	2901-240232	3001-240232	3301-240232P
24X6	2901-906232	3001-906232	3301-906232P
24X8	2901-908232	3001-908232	3301-908232P
24X10	2901-910232	3001-910232	3301-910232P
24X12	2901-912232	3001-912232	3301-912232P
24X15	2901-915232	3001-915232	3301-915232P
24X18	2901-918232	3001-918232	3301-918232P
24X21	2901-921232	3001-921232	3301-921232P



Suitable for Oil-Free air handling to 25 psi, not for distribution of compressed air or gas

JJ DOWNS INDUSTRIAL PLASTICS INC.

416.236.1884
Toronto, ON
JJDOWNS.COM




Irrigation & Turf Product
PVC 80, 100 & 125 PSI PIP Fabricated Fittings


Tees

Size	80 PSI	100 PSI	125 PSI
	Prod Code:310 Part Number	Prod Code:320 Part Number	Prod Code:330 Part Number

Tee (Gasket x Spigot x Gasket) (continued)


	27	2901-270232	3001-270232	3301-270232P
	27X6	2901-936232	3001-936232	3301-936232P
	27X8	2901-938232	3001-938232	3301-938232P
	27X10	2901-940232	3001-940232	3301-940232P
	27X12	2901-942232	3001-942232	3301-942232P
	27X15	2901-945232	3001-945232	3301-945232P
	27X18	2901-948232	3001-948232	3301-948232P
	27X21	2901-951232	3001-951232	3301-951232P
	27X24	2901-954232	3001-954232	3301-954232P

Tee (Gasket x Gasket x Gasket)

	6	290-103174	300-103174	3301-0602P
	6X4	290-103173	300-103173	3301-5322P
	8	290-103179	300-103179	3301-0802P
	8X4	290-103177	300-103177	3301-5822P
	8X6	290-103178	300-103178	3301-5852P
	10	290-103185	300-103185	3301-1002P
	10X4	290-103182	300-103182	3301-6242P
	10X6	290-103183	300-103183	3301-6262P
	10X8	290-103184	300-103184	3301-6282P
	12	290-103192	300-103192	3301-1202P
	12X4	290-103188	300-103188	3301-6642P
	12X6	290-103189	300-103189	3301-6662P
	12X8	290-103190	300-103190	3301-6682P
	12X10	290-103191	300-103191	3301-6702P
	15	290-103200	300-103200	3301-1502P
	15X4	290-103195	300-103195	3301-7242P
	15X6	290-103196	300-103196	3301-7262P
	15X8	290-103197	300-103197	3301-7282P
	15X10	290-103198	300-103198	3301-7302P
	15X12	290-103199	300-103199	3301-7322P
	18	290-103209	300-103209	3301-1802P
	18X4	290-103203	300-103203	3301-7842P
	18X6	290-103204	300-103204	3301-7862P
	18X8	290-103205	300-103205	3301-7882P
	18X10	290-103206	300-103206	3301-7902P
	18X12	290-103207	300-103207	3301-7922P
	18X15	290-103208	300-103208	3301-7952P
	21	290-103230	300-103230	3301-2102P
	21X4	290-103222	300-103222	3301-8442P
	21X6	290-103223	300-103223	3301-8462P
	21X8	290-103224	300-103224	3301-8482P
	21X10	290-103225	300-103225	3301-8502P
	21X12	290-103226	300-103226	3301-8522P
	21X15	290-103227	300-103227	3301-8552P
	21X18	290-103228	300-103228	3301-8582P
	24	2901-2402	3001-2402	3301-2402P
	24X6	2901-9062	3001-9062	3301-9062P
	24X8	2901-9082	3001-9082	3301-9082P
	24X10	2901-9102	3001-9102	3301-9102P
	24X12	2901-9122	3001-9122	3301-9122P
	24X15	2901-9152	3001-9152	3301-9152P
	24X18	2901-9182	3001-9182	3301-9182P
	24X21	2901-9212	3001-9212	3301-9212P
	27	2901-2702	3001-2702	3301-2702P

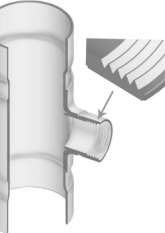
Size	80 PSI	100 PSI	125 PSI
	Prod Code:310 Part Number	Prod Code:320 Part Number	Prod Code:330 Part Number

Tee (Gasket x Gasket x Gasket) (continued)

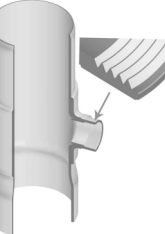
	27X6	2901-9362	3001-9362	3301-9362P
	27X8	2901-9382	3001-9382	3301-9382P
	27X10	2901-9402	3001-9402	3301-9402P
	27X12	2901-9422	3001-9422	3301-9422P
	27X15	2901-9452	3001-9452	3301-9452P
	27X18	2901-9482	3001-9482	3301-9482P
	27X21	2901-9512	3001-9512	3301-9512P
	27X24	2901-9542	3001-9542	3301-9542P

Size	80 PSI	100 PSI	125 PSI
	Prod Code:310 Part Number	Prod Code:320 Part Number	Prod Code:330 Part Number

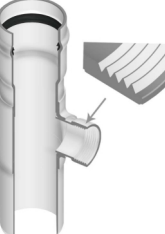
Reinforced Tee (Socket x Socket x Fipt)

	6X2		300-202152	3302-528P
	6X3		300-202154	3302-530P
	6X4		300-202155	3302-532P
	8X2		300-202157	3302-578P
	8X3		300-202159	3302-580P
	8X4		300-202160	3302-582P
	10X2		300-202162	3302-621P
	10X3		300-202164	3302-623P
	10X4		300-202165	3302-624P
	12X2		300-202167	3302-661P
	12X3		300-202169	3302-663P
	12X4		300-202170	3302-664P
	15X2		300-202172	3302-721P
	15X3		300-202174	3302-723P
	15X4		300-202175	3302-724P

Reinforced Tee (Socket x Spigot x Fipt)

	6X2		300-202222	
	6X3		300-202224	
	6X4		300-202225	
	8X2		300-202227	
	8X3		300-202229	
	8X4		300-202230	
	10X2		300-202232	
	10X3		300-202234	
	10X4		300-202235	
	12X2		300-202237	
	12X3		300-202239	
	12X4		300-202240	
	15X2		300-202242	3302-72113P
	15X3		300-202244	3302-72313P
	15X4		300-202245	3302-72413P

Reinforced Tee (Gasket x Spigot x Fipt)

	6X2		300-202362	
	6X3		300-202364	
	6X4		300-202365	
	8X2		300-202367	
	8X3		300-202369	
	8X4		300-202370	
	10X2		300-202372	
	10X3		300-202374	
	10X4		300-202375	
	12X2		300-202377	
	12X3		300-202379	

Suitable for Oil-Free air handling to 25 psi, not for distribution of compressed air or gas




JJ DOWNS INDUSTRIAL PLASTICS INC.

416.236.1884
Toronto, ON
JJDOWNS.COM



Irrigation & Turf Product
PVC 80, 100 & 125 PSI PIP Fabricated Fittings

Tees

Size	80 PSI	100 PSI	125 PSI
	Prod Code:310 Part Number	Prod Code:320 Part Number	Prod Code:330 Part Number

Reinforced Tee (Gasket x Spigot x Fipt) (continued)

	12X4		300-202380	
	15X2		300-202382	3302-72123P
	15X3		300-202384	3302-72323P
	15X4		300-202385	3302-72423P

Reinforced Tee (Gasket x Fipt)

	6X2		300-202432	
	6X3		300-202434	
	6X4		300-202435	
	8X2		300-202437	
	8X3		300-202439	
	8X4		300-202440	
	10X2		300-202442	
	10X3		300-202444	
	10X4		300-202445	
	12X2		300-202447	
	12X3		300-202449	
	12X4		300-202450	
	15X2		300-202452	3302-7212P
	15X3		300-202454	3302-7232P
	15X4		300-202455	3302-7242P

PIP x IPS Tees

Size	80 PIP	100 PIP	125 PIP
	Prod Code:319 Part Number	Prod Code:329 Part Number	Prod Code:339 Part Number

PIP x IPS Tee (Socket x Socket x Socket)

	6	2901-060PXI	3001-060PXI	3301-060PXI
	8	2901-080PXI	3001-080PXI	3301-080PXI
	8X6	2901-585PXI	3001-585PXI	3301-585PXI
	10	2901-100PXI	3001-100PXI	3301-100PXI
	10X6	2901-626PXI	300-102821	3301-626PXI
	10X8	2901-628PXI	3001-628PXI	3301-628PXI
	12	2901-120PXI	3001-120PXI	3301-120PXI
	12X6	2901-666PXI	300-102599	3301-666PXI
	12X8	2901-668PXI	300-102607	3301-668PXI
	12X10	2901-670PXI	3001-670PXI	3301-670PXI
	15X6	2901-726PXI	300-102708	3301-726PXI
	15X8	2901-728PXI	300-102709	3301-728PXI
	15X10	2901-730PXI	3001-730PXI	3301-730PXI
	15X12	2901-732PXI	300-102817	3301-732PXI
	18X6	2901-786PXI	3001-786PXI	3301-786PXI
	18X8	2901-788PXI	3001-788PXI	3301-788PXI
	18X10	2901-790PXI	3001-790PXI	3301-790PXI
	18X12	2901-792PXI	3001-792PXI	3301-792PXI
21X6	2901-846PXI	3001-846PXI	3301-846PXI	
21X8	2901-848PXI	3001-848PXI	3301-848PXI	
21X10	2901-850PXI	3001-850PXI	3301-850PXI	
21X12	2901-852PXI	3001-852PXI	3301-852PXI	

Size	80 PIP	100 PIP	125 PIP
	Prod Code:319 Part Number	Prod Code:329 Part Number	Prod Code:339 Part Number

PIP x IPS Tee (Socket x Socket x Socket) (continued)

	24X6	2901-906PXI	3001-906PXI	3301-906PXI
	24X8	2901-908PXI	3001-908PXI	3301-908PXI
	24X10	2901-910PXI	3001-910PXI	3301-910PXI
	24X12	2901-912PXI	3001-912PXI	3301-912PXI

90° Ells

Size	80 PSI	100 PSI	125 PSI
	Prod Code:310 Part Number	Prod Code:320 Part Number	Prod Code:330 Part Number

90° Elbow (Socket x Socket)

	6	290-100812	300-100812	3306-060P
	8	290-100813	300-100813	3306-080P
	10	290-100814	300-100814	3306-100P
	12	290-100815	300-100815	3306-120P
	15	290-100816	300-100816	3306-150P
	18	290-100817	300-100817	3306-180P
	21	290-100819	300-100819	3306-210P
	24	290-100820	300-100820	3306-240P
	27	2906-270	3006-270	3306-270P

90° Elbow (Gasket x Spigot)

	6	290-100878	300-100878	3306-06023P
	8	290-100879	300-100879	3306-08023P
	10	290-100880	300-100880	3306-10023P
	12	290-100881	300-100881	3306-12023P
	15	290-100882	300-100882	3306-15023P
	18	290-100883	300-100883	3306-18023P
	21	290-100885	300-100885	3306-21023P
	24	2906-24023	3006-24023	3306-24023P
27	2906-27023	3006-27023	3306-27023P	

90° Elbow (Gasket x Gasket)

	6	290-100900	300-100900	3306-0602P
	8	290-100901	300-100901	3306-0802P
	10	290-100902	300-100902	3306-1002P
	12	290-100903	300-100903	3306-1202P
	15	290-100904	300-100904	3306-1502P
	18	290-100905	300-100905	3306-1802P
	21	290-100907	300-100907	3306-2102P
	24	2906-2402	3006-2402	3306-2402P
	27	2906-2702	3006-2702	3306-2702P

Suitable for Oil-Free air handling to 25 psi, not for distribution of compressed air or gas


JJ DOWNS INDUSTRIAL PLASTICS INC.

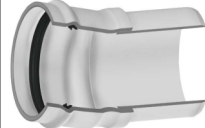
416.236.1884
Toronto, ON
JJDOWNS.COM





Irrigation & Turf Product
PVC 80, 100 & 125 PSI PIP Fabricated Fittings

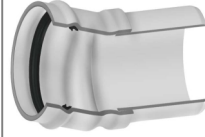
Non 90° Ells


Size	80 PSI	100 PSI	125 PIP
	Prod Code:310 Part Number	Prod Code:320 Part Number	Prod Code:330 Part Number
11-1/4° Elbow (Socket x Socket)			
	6 290-100114	300-100114	3311-060P
	8 290-100115	300-100115	3311-080P
	10 290-100116	300-100116	3311-100P
	12 290-100117	300-100117	3311-120P
	15 290-100118	300-100118	3311-150P
	18 290-100119	300-100119	3311-180P
	21 290-100121	300-100121	3311-210P
	24 290-100122	300-100122	3311-240P
	27 2911-270	3011-270	3311-270P


Size	80 PSI	100 PSI	125 PIP
	Prod Code:310 Part Number	Prod Code:320 Part Number	Prod Code:330 Part Number
11-1/4° Elbow (Gasket x Spigot)			
	6 290-100186	300-100186	3311-06023P
	8 290-100187	300-100187	3311-08023P
	10 290-100188	300-100188	3311-10023P
	12 290-100189	300-100189	3311-12023P
	15 290-100190	300-100190	3311-15023P
	18 290-100191	300-100191	3311-18023P
	21 290-100193	300-100193	3311-21023P
	24 2911-24023	3011-24023	3311-24023P
	27 2911-27023	3011-27023	3311-27023P

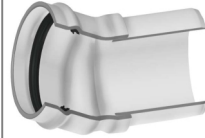
Size	80 PSI	100 PSI	125 PIP
	Prod Code:310 Part Number	Prod Code:320 Part Number	Prod Code:330 Part Number
11-1/4° Elbow (Gasket x Gasket)			
	6 290-100210	300-100210	3311-0602P
	8 290-100211	300-100211	3311-0802P
	10 290-100212	300-100212	3311-1002P
	12 290-100213	300-100213	3311-1202P
	15 290-100214	300-100214	3311-1502P
	18 290-100215	300-100215	3311-1802P
	21 290-100217	300-100217	3311-2102P
	24 2911-2402	3011-2402	3311-2402P
	27 2911-2702	3011-2702	3311-2702P

Size	80 PSI	100 PSI	125 PIP
	Prod Code:310 Part Number	Prod Code:320 Part Number	Prod Code:330 Part Number
15° Elbow (Socket x Socket)			
	6 290-100234	300-100234	3318-060P
	8 290-100235	300-100235	3318-080P
	10 290-100236	300-100236	3318-100P
	12 290-100237	300-100237	3318-120P
	15 290-100238	300-100238	3318-150P
	18 290-100239	300-100239	3318-180P
	21 290-100241	300-100241	3318-210P
	24 290-100242	300-100242	3318-240P
	27 2918-270	3018-270	3318-270P

Size	80 PSI	100 PSI	125 PIP
	Prod Code:310 Part Number	Prod Code:320 Part Number	Prod Code:330 Part Number
15° Elbow (Gasket x Spigot)			
	6 290-100306	300-100306	3318-06023P
	8 290-100307	300-100307	3318-08023P
	10 290-100308	300-100308	3318-10023P
	12 290-100309	300-100309	3318-12023P
	15 290-100310	300-100310	3318-15023P
	18 290-100311	300-100311	3318-18023P
	21 290-100313	300-100313	3318-21023P
	24 2918-24023	3018-24023	3318-24023P
	27 2918-27023	3018-27023	3318-27023P

Size	80 PSI	100 PSI	125 PIP
	Prod Code:310 Part Number	Prod Code:320 Part Number	Prod Code:330 Part Number
15° Elbow (Gasket x Gasket)			
	6 290-100330	300-100330	3318-0602P
	8 290-100331	300-100331	3318-0802P
	10 290-100332	300-100332	3318-1002P
	12 290-100333	300-100333	3318-1202P
	15 290-100334	300-100334	3318-1502P
	18 290-100335	300-100335	3318-1802P
	21 290-100336	300-100336	3318-2102P
	24 2918-2402	3018-2402	3318-2402P
	27 2918-2702	3018-2702	3318-2702P

Size	80 PSI	100 PSI	125 PIP
	Prod Code:310 Part Number	Prod Code:320 Part Number	Prod Code:330 Part Number
22-1/2° Elbow (Socket x Socket)			
	6 290-100354	300-100354	3316-060P
	8 290-100355	300-100355	3316-080P
	10 290-100356	300-100356	3316-100P
	12 290-100357	300-100357	3316-120P
	15 290-100358	300-100358	3316-150P
	18 290-100359	300-100359	3316-180P
	21 290-100361	300-100361	3316-210P
	24 290-100362	300-100362	3316-240P
	27 2916-270	3016-270	3316-270P

Size	80 PSI	100 PSI	125 PIP
	Prod Code:310 Part Number	Prod Code:320 Part Number	Prod Code:330 Part Number
22-1/2° Elbow (Gasket x Spigot)			
	6 290-100426	300-100426	3316-06023P
	8 290-100427	300-100427	3316-08023P
	10 290-100428	300-100428	3316-10023P
	12 290-100429	300-100429	3316-12023P
	15 290-100430	300-100430	3316-15023P
	18 290-100431	300-100431	3316-18023P
	21 290-100433	300-100433	3316-21023P
	24 2916-24023	3016-24023	3316-24023P
	27 2916-27023	3016-27023	3316-27023P

Suitable for Oil-Free air handling to 25 psi, not for distribution of compressed air or gas




JJ DOWNS INDUSTRIAL PLASTICS INC.

416.236.1884
Toronto, ON
JJDOWNS.COM




Irrigation & Turf Product
PVC 80, 100 & 125 PSI PIP Fabricated Fittings


Non 90° Ells

Size	80 PSI	100 PSI	125 PSI
	Prod Code:310 Part Number	Prod Code:320 Part Number	Prod Code:330 Part Number


22-1/2° Elbow (Gasket x Gasket)

	6	290-100450	300-100450	3316-0602P
	8	290-100451	300-100451	3316-0802P
	10	290-100452	300-100452	3316-1002P
	12	290-100453	300-100453	3316-1202P
	15	290-100454	300-100454	3316-1502P
	18	290-100455	300-100455	3316-1802P
	21	290-100457	300-100457	3316-2102P
	24	2916-2402	3016-2402	3316-2402P
	27	2916-2702	3016-2702	3316-2702P


30° Elbow (Socket x Socket)

	6	290-100474	300-100474	3315-060P
	8	290-100475	300-100475	3315-080P
	10	290-100476	300-100476	3315-100P
	12	290-100477	300-100477	3315-120P
	15	290-100478	300-100478	3315-150P
	18	290-100479	300-100479	3315-180P
	21	290-100481	300-100481	3315-210P
	24	290-100482	300-100482	3315-240P
	27	2915-270	3015-270	3315-270P

30° Elbow (Gasket x Spigot)


	6	290-100546	300-100546	3315-06023P
	8	290-100547	300-100547	3315-08023P
	10	290-100548	300-100548	3315-10023P
	12	290-100549	300-100549	3315-12023P
	15	290-100550	300-100550	3315-15023P
	18	290-100551	300-100551	3315-18023P
	21	290-100553	300-100553	3315-21023P
	24	2915-24023	3015-24023	3315-24023P
	27	2915-27023	3015-27023	3315-27023P

30° Elbow (Gasket x Gasket)

	6	290-100570	300-100570	3315-0602P
	8	290-100571	300-100571	3315-0802P
	10	290-100572	300-100572	3315-1002P
	12	290-100573	300-100573	3315-1202P
	15	290-100574	300-100574	3315-1502P
	18	290-100575	300-100575	3315-1802P
	21	290-100577	300-100577	3315-2102P
	24	2915-2402	3015-2402	3315-2402P
	27	2915-2702	3015-2702	3315-2702P


Size	80 PSI	100 PSI	125 PSI
	Prod Code:310 Part Number	Prod Code:320 Part Number	Prod Code:330 Part Number

45° Elbow (Socket x Socket)

	6	290-100592	300-100592	3317-060P
	8	290-100593	300-100593	3317-080P
	10	290-100594	300-100594	3317-100P
	12	290-100595	300-100595	3317-120P
	15	290-100596	300-100596	3317-150P
	18	290-100597	300-100597	3317-180P
	21	290-100599	300-100599	3317-210P
	24	290-100600	300-100600	3317-240P
	27	2917-270	3017-270	3317-270P


Size	80 PSI	100 PSI	125 PSI
	Prod Code:310 Part Number	Prod Code:320 Part Number	Prod Code:330 Part Number

PIP 45° Elbow (Gasket x Spigot)

	6	290-100658	300-100658	3317-06023P
	8	290-100659	300-100659	3317-08023P
	10	290-100660	300-100660	3317-10023P
	12	290-100661	300-100661	3317-12023P
	15	290-100662	300-100662	3317-15023P
	18	290-100663	300-100663	3317-18023P
	21	290-100665	300-100665	3317-21023P
	24	2917-24023	3017-24023	3317-24023P
	27	2917-27023	3017-27023	3317-27023P

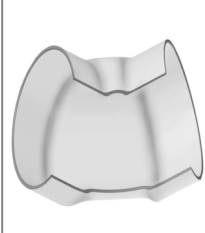
Size	80 PSI	100 PSI	125 PSI
	Prod Code:310 Part Number	Prod Code:320 Part Number	Prod Code:330 Part Number

45° Elbow (Gasket x Gasket)

	6	290-100680	300-100680	3317-0602P
	8	290-100681	300-100681	3317-0802P
	10	290-100682	300-100682	3317-1002P
	12	290-100683	300-100683	3317-1202P
	15	290-100684	300-100684	3317-1502P
	18	290-100685	300-100685	3317-1802P
	21	290-100687	300-100687	3317-2102P
	24	2917-2402	3017-2402	3317-2402P
	27	2917-2702	3017-2702	3317-2702P

Size	80 PSI	100 PSI	125 PSI
	Prod Code:310 Part Number	Prod Code:320 Part Number	Prod Code:330 Part Number

60° Elbow (Socket x Socket)

	6	290-100702	300-100702	3324-060P
	8	290-100703	300-100703	3324-080P
	10	290-100704	300-100704	3324-100P
	12	290-100705	300-100705	3324-120P
	15	290-100706	300-100706	3324-150P
	18	290-100707	300-100707	3324-180P
	21	290-100709	300-100709	3324-210P
	24	290-100710	300-100710	3324-240P
	27	2924-270	3024-270	3324-270P

Suitable for Oil-Free air handling to 25 psi, not for distribution of compressed air or gas




JJ DOWNS INDUSTRIAL PLASTICS INC.

416.236.1884
Toronto, ON
JJDOWNS.COM



Irrigation & Turf Product
PVC 80, 100 & 125 PSI PIP Fabricated Fittings

Non 90° Ells

Size	80 PSI	100 PSI	125 PSI
	Prod Code:310 Part Number	Prod Code:320 Part Number	Prod Code:330 Part Number
60° Elbow (Gasket x Spigot)			
6	290-100768	300-100768	3324-06023P
8	290-100769	300-100769	3324-08023P
10	290-100770	300-100770	3324-10023P
12	290-100771	300-100771	3324-12023P
15	290-100772	300-100772	3324-15023P
18	290-100773	300-100773	3324-18023P
21	290-100775	300-100775	3324-21023P
24	2924-24023	3024-24023	3324-24023P
27	2924-27023	3024-27023	3324-27023P

60° Elbow (Gasket x Gasket)

6	290-100790	300-100790	3324-0602P
8	290-100791	300-100791	3324-0802P
10	290-100792	300-100792	3324-1002P
12	290-100793	300-100793	3324-1202P
15	290-100794	300-100794	3324-1502P
18	290-100795	300-100795	3324-1802P
21	290-100797	300-100797	3324-2102P
24	2924-2402	3024-2402	3324-2402P
27	2924-2702	3024-2702	3324-2702P

Couplings

Size	80 PSI	100 PSI	125 PSI
	Prod Code:310 Part Number	Prod Code:320 Part Number	Prod Code:330 Part Number

PIP Repair Coupling (Gasket x Gasket)

6	2928-060	3028-060	3328-060P
8	2928-080	3028-080	3328-080P
10	2928-100	3028-100	3328-100P
12	2928-120	3028-120	3328-120P
15	2928-150	3028-150	3328-150P
18	2928-180	3028-180	3328-180P
21	2928-210	3028-210	3328-210P
24	2928-240	3028-240	3328-240P
27	2928-270	3028-270	3328-270P

Size	80 PSI	100 PSI	125 PSI
	Prod Code:310 Part Number	Prod Code:320 Part Number	Prod Code:330 Part Number

PIP Coupling (Socket x Socket)

6	290-100002	300-100002	3329-060P
8	290-100003	300-100003	3329-080P
10	290-100004	300-100004	3329-100P
12	290-100005	300-100005	3329-120P
15	290-100006	300-100006	3329-150P
18	290-100007	300-100007	3329-180P
21	290-100009	300-100009	3329-210P
24	290-100010	300-100010	3329-240P
27	2929-270	3029-270	3329-270P
30	2929-300	3029-300	

Size	80 PSI	100 PSI	125 PSI
	Prod Code:310 Part Number	Prod Code:320 Part Number	Prod Code:330 Part Number

PIP Coupling (Gasket x Spigot)

6	290-100068	300-100068	3329-06023P
8	290-100069	300-100069	3329-08023P
10	290-100070	300-100070	3329-10023P
12	290-100071	300-100071	3329-12023P
15	290-100072	300-100072	3329-15023P
18	290-100073	300-100073	3329-18023P
21	290-100075	300-100075	3329-21023P
24	2929-24023	3029-24023	3329-24023P
27	2929-27023	3029-27023	3329-27023P

PIP Coupling (Gasket x Gasket)

6	290-100090	300-100090	3329-0602P
8	290-100091	300-100091	3329-0802P
10	290-100092	300-100092	3329-1002P
12	290-100093	300-100093	3329-1202P
15	290-100094	300-100094	3329-1502P
18	290-100095	300-100095	3329-1802P
21	290-100097	300-100097	3329-2102P
24	2929-2402	3029-2402	3329-2402P
27	2929-2702	3029-2702	3329-2702P

Reducer Couplings

Size	80 PSI	100 PSI	125 PSI
	Prod Code:310 Part Number	Prod Code:320 Part Number	Prod Code:330 Part Number

Reducer Coupling (Socket x Socket)

6X2	2929-528	3029-528	
6X2-1/2		3029-529	
6X3		3029-530	
6X4	2929-532	3029-532	3329-532P
8X2	2929-578		
8X2-1/2		3029-579	
8X3		3029-580	
8X4	2929-582	300-100927	3329-582P
8X6	2929-585	300-100928	3329-585P
10X2	2929-621	3029-621	
10X2-1/2		3029-622	
10X3		3029-623	
10X4	2929-624	3029-624	3329-624P
10X6	2929-626	300-100930	3329-626P
10X8	2929-628	300-100931	3329-628P
12X2		3029-661	
12X2-1/2		3029-662	
12X3		3029-663	
12X4	2929-664	3029-664	3329-664P
12X6	2929-666	300-100933	3329-666P
12X8	2929-668	300-100934	3329-668P
12X10	2929-670	300-100935	3329-670P
15X2	2929-721		
15X3	2929-723	3029-723	
15X4	2929-724	3029-724	3329-724P

Suitable for Oil-Free air handling to 25 psi, not for distribution of compressed air or gas

JJ DOWNS INDUSTRIAL PLASTICS INC.

416.236.1884
Toronto, ON
JJDOWNS.COM



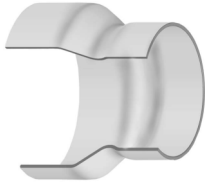
Irrigation & Turf Product
PVC 80, 100 & 125 PSI PIP Fabricated Fittings

Reducer Couplings

Size	80 PSI	100 PSI	125 PSI
	Prod Code:310 Part Number	Prod Code:320 Part Number	Prod Code:330 Part Number

Reducer Coupling (Socket x Socket) (continued)

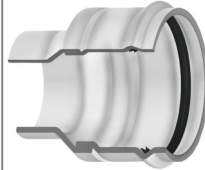
15X6	2929-726	3029-726	3329-726P
15X8	2929-728	3029-728	3329-728P
15X10	2929-730	3029-730	3329-730P
15X12	2929-732	300-100940	3329-732P
18X4	2929-784	3029-784	3329-784P
18X6	2929-786	3029-786	3329-786P
18X8	2929-788	3029-788	3329-788P
18X10	2929-790	3029-790	3329-790P
18X12	2929-792	3029-792	3329-792P
18X15	2929-795	300-100946	3329-795P
21X3	2929-843		
21X4	2929-844	3029-844	3329-844P
21X6	2929-846	3029-846	3329-846P
21X8	2929-848	3029-848	3329-848P
21X10	2929-850	3029-850	3329-850P
21X12	2929-852	3029-852	3329-852P
21X15	2929-855	3029-855	3329-855P
21X18	2929-858	300-100960	3329-858P
24X3	2929-903	3029-903	
24X6	2929-906	3029-906	3329-906P
24X8	2929-908	3029-908	3329-908P
24X10	2929-910	3029-910	3329-910P
24X12	2929-912	3029-912	3329-912P
24X15	2929-915	3029-915	3329-915P
24X18	2929-918	3029-918	3329-918P
24X21	2929-921	300-100969	3329-921P
27X6	2929-936		3329-936P
27X8	2929-938	3029-938	3329-938P
27X10	2929-940	3029-940	3329-940P
27X12	2929-942	3029-942	3329-942P
27X15	2929-945	3029-945	3329-945P
27X18	2929-948	3029-948	3329-948P
27X21	2929-951	3029-951	3329-951P
27X24	2929-954	3029-954	3329-954P
30X18	2929-978	3029-978	
30X21		3029-981	
30X24	2929-984	3029-984	
30X27	2929-987	3029-987	



Size	80 PSI	100 PSI	125 PSI
	Prod Code:310 Part Number	Prod Code:320 Part Number	Prod Code:330 Part Number

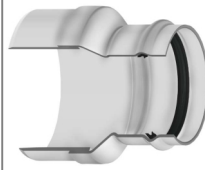
Reducer Coupling (Gasket x Spigot) (continued)

18X8	2929-78823	3029-78823	3329-78823P
18X10	2929-79023	3029-79023	3329-79023P
18X12	2929-79223	3029-79223	3329-79223P
18X15	2929-79523	300-101330	3329-79523P
21X6	2929-84623	3029-84623	3329-84623P
21X8	2929-84823	3029-84823	3329-84823P
21X10	2929-85023	3029-85023	3329-85023P
21X12	2929-85223	3029-85223	3329-85223P
21X15	2929-85523	3029-85523	3329-85523P
21X18	2929-85823	300-101344	3329-85823P
24X6	2929-90623	3029-90623	3329-90623P
24X8	2929-90823	3029-90823	3329-90823P
24X10	2929-91023	3029-91023	3329-91023P
24X12	2929-91223	3029-91223	3329-91223P
24X15	2929-91523	3029-91523	3329-91523P
24X18	2929-91823	3029-91823	3329-91823P
24X21	2929-92123	3029-92123	3329-92123P
27X6	2929-93623	3029-93623	3329-93623P
27X8	2929-93823	3029-93823	3329-93823P
27X10	2929-94023	3029-94023	3329-94023P
27X12	2929-94223	3029-94223	3329-94223P
27X15	2929-94523	3029-94523	3329-94523P
27X18	2929-94823	3029-94823	3329-94823P
27X21	2929-95123	3029-95123	3329-95123P
27X24	2929-95423	3029-95423	3329-95423P



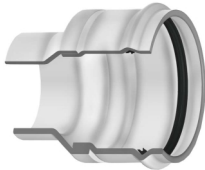
Reducer Coupling (Spigot x Gasket)

6X4	2929-53232	300-101383	3329-53232P
8X4	2929-58232	3029-58232	3329-58232P
8X6	2929-58532	300-101385	3329-58532P
10X4	2929-62432	3029-62432	3329-62432P
10X6	2929-62632	3029-62632	3329-62632P
10X8	2929-62832	300-101388	3329-62832P
12X4	2929-66432	3029-66432	3329-66432P
12X6	2929-66632	3029-66632	3329-66632P
12X8	2929-66832	3029-66832	3329-66832P
12X10	2929-67032	300-101392	3329-67032P
15X4	2929-72432	3029-72432	3329-72432P
15X6	2929-72632	3029-72632	3329-72632P
15X8	2929-72832	3029-72832	3329-72832P
15X10	2929-73032	3029-73032	3329-73032P
15X12	2929-73232	300-101397	3329-73232P
18X4	2929-78432	3029-78432	3329-78432P
18X6	2929-78632	3029-78632	3329-78632P
18X8	2929-78832	3029-78832	3329-78832P
18X10	2929-79032	3029-79032	3329-79032P
18X12	2929-79232	3029-79232	3329-79232P
18X15	2929-79532	300-101403	3329-79532P
21X6	2929-84632	3029-84632	3329-84632P
21X8	2929-84832	3029-84832	3329-84832P
21X10	2929-85032	3029-85032	3329-85032P
21X12	2929-85232	3029-85232	3329-85232P
21X15	2929-85532	3029-85532	3329-85532P
21X18	2929-85832	300-101417	3329-85832P
24X6	2929-90632	3029-90632	3329-90632P
24X8	2929-90832	3029-90832	3329-90832P
24X10	2929-91032	3029-91032	3329-91032P
24X12	2929-91232	3029-91232	3329-91232P
24X15	2929-91532	3029-91532	3329-91532P



Reducer Coupling (Gasket x Spigot)

6X4	2929-53223	300-101310	3329-53223P
8X4	2929-58223	300-100927	3329-58223P
8X6	2929-58523	300-101312	3329-58523P
10X4	2929-62423	3029-62423	3329-62423P
10X6	2929-62623	300-100930	3329-62623P
10X8	2929-62823	300-101315	3329-62823P
12X4	2929-66423	3029-66423	3329-66423P
12X6	2929-66623	300-100933	3329-66623P
12X8	2929-66823	300-100934	3329-66823P
12X10	2929-67023	300-101319	3329-67023P
15X4	2929-72423	3029-72423	3329-72423P
15X6	2929-72623	3029-72623	3329-72623P
15X8	2929-72823	3029-72823	3329-72823P
15X10	2929-73023	3029-73023	3329-73023P
15X12	2929-73223	300-101324	3329-73223P
18X4	2929-78423	3029-78423	3329-78423P
18X6	2929-78623	3029-78623	3329-78623P



Suitable for Oil-Free air handling to 25 psi, not for distribution of compressed air or gas

JJ DOWNS INDUSTRIAL PLASTICS INC.

416.236.1884
Toronto, ON
JJDOWNS.COM



Irrigation & Turf Product
PVC 80, 100 & 125 PSI PIP Fabricated Fittings

Reducer Couplings

Size	80 PSI	100 PSI	125 PSI
	Prod Code:310 Part Number	Prod Code:320 Part Number	Prod Code:330 Part Number
24X18	2929-91832	3029-91832	3329-91832P
24X21	2929-92132	3029-92132	3329-92132P
27X6	2929-93632	3029-93632	3329-93632P
27X8	2929-93832	3029-93832	3329-93832P
27X10	2929-94032	3029-94032	3329-94032P
27X12	2929-94232	3029-94232	3329-94232P
27X15	2929-94532	3029-94532	3329-94532P
27X18	2929-94832	3029-94832	3329-94832P
27X21	2929-95132	3029-95132	3329-95132P
27X24	2929-95432	3029-95432	3329-95432P

Reducer Coupling (Gasket x Gasket)

6X4	2929-5322	300-101456	3329-5322P
8X4	2929-5822	3029-5822	3329-5822P
8X6	2929-5852	300-101458	3329-5852P
10X4	2929-6242	3029-6242	3329-6242P
10X6	2929-6262	3029-6262	3329-6262P
10X8	2929-6282	300-101461	3329-6282P
12X4	2929-6642	3029-6642	3329-6642P
12X6	2929-6662	3029-6662	3329-6662P
12X8	2929-6682	3029-6682	3329-6682P
12X10	2929-6702	300-101465	3329-6702P
15X4	2929-7242	3029-7242	3329-7242P
15X6	2929-7262	3029-7262	3329-7262P
15X8	2929-7282	3029-7282	3329-7282P
15X10	2929-7302	3029-7302	3329-7302P
15X12	2929-7322	300-101470	3329-7322P
18X4	2929-7842	3029-7842	3329-7842P
18X6	2929-7862	3029-7862	3329-7862P
18X8	2929-7882	3029-7882	3329-7882P
18X10	2929-7902	3029-7902	3329-7902P
18X12	2929-7922	3029-7922	3329-7922P
18X15	2929-7952	300-101476	3329-7952P
21X6	2929-8462	3029-8462	3329-8462P
21X8	2929-8482	3029-8482	3329-8482P
21X10	2929-8502	3029-8502	3329-8502P
21X12	2929-8522	3029-8522	3329-8522P
21X15	2929-8552	3029-8552	3329-8552P
21X18	2929-8582	300-101489	3329-8582P
24X6	2929-9062	3029-9062	3329-9062P
24X8	2929-9082	3029-9082	3329-9082P
24X10	2929-9102	3029-9102	3329-9102P
24X12	2929-9122	3029-9122	3329-9122P
24X15	2929-9152	3029-9152	3329-9152P
24X18	2929-9182	3029-9182	3329-9182P
24X21	2929-9212	3029-9212	3329-9212P
27X6	2929-9362	3029-9362	3329-9362P
27X8	2929-9382	3029-9382	3329-9382P
27X10	2929-9402	3029-9402	3329-9402P
27X12	2929-9422	3029-9422	3329-9422P
27X15	2929-9452	3029-9452	3329-9452P
27X18	2929-9482	3029-9482	3329-9482P
27X21	2929-9512	3029-9512	3329-9512P
27X24	2929-9542	3029-9542	3329-9542P

PIP x IPS Adapters & Couplings

Size	80 PSI	100 PSI	125 PSI
	Prod Code:319 Part Number	Prod Code:329 Part Number	Prod Code:339 Part Number
6X4	2929-532		3329-532P
8X6		300-101537	
10X6		3029-626PXI	
10X8		300-101538	
12X10		300-101539	
15X10		300-101541	
15X12		300-101540	

IPS x PIP Adapter (Socket x Socket)

6		300-101649	
8		300-101650	
10		300-101651	
12		300-101652	

IPS x PIP Adapter (Gasket x Gasket)

6		300-101747	
8		300-101748	
10		300-101749	
12		300-101750	

Crosses

Size	80 PSI	100 PSI	125 PSI
	Prod Code:310 Part Number	Prod Code:320 Part Number	Prod Code:330 Part Number
6	290-103286	300-103286	3320-060P
6X2	290-103283	300-103283	3320-528P
6X3	290-103284	300-103284	3320-530P
6X4	290-103285	300-103285	3320-532P
8	290-103291	300-103291	3320-080P
8X2	290-103287	300-103287	3320-578P
8X3	290-103288	300-103288	3320-580P
8X4	290-103289	300-103289	3320-582P
8X6	290-103290	300-103290	3320-585P
10	290-103297	300-103297	3320-100P
10X2	290-103292	300-103292	3320-621P
10X3	290-103293	300-103293	3320-623P

Suitable for Oil-Free air handling to 25 psi, not for distribution of compressed air or gas

International association of plastics distribution

JJ DOWNS INDUSTRIAL PLASTICS INC.

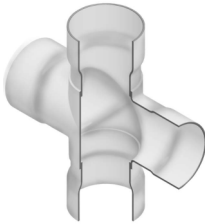
416.236.1884 Toronto, ON JJDOWN.COM



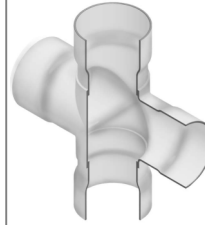
Irrigation & Turf Product
PVC 80, 100 & 125 PSI PIP Fabricated Fittings

Crosses

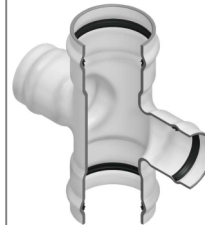
Size	80 PSI	100 PSI	125 PSI
	Prod Code:310 Part Number	Prod Code:320 Part Number	Prod Code:330 Part Number
Cross (Socket x Socket x Socket x Socket) (continued)			
10X4	290-103294	300-103294	3320-624P
10X6	290-103295	300-103295	3320-626P
10X8	290-103296	300-103296	3320-628P
12	290-103304	300-103304	3320-120P
12X2	290-103298	300-103298	3320-661P
12X3	290-103299	300-103299	3320-663P
12X4	290-103300	300-103300	3320-664P
12X6	290-103301	300-103301	3320-666P
12X8	290-103302	300-103302	3320-668P
12X10	290-103303	300-103303	3320-670P
15	290-103321	300-103321	3320-150P
15X2	290-103313	300-103313	3320-721P
15X3	290-103314	300-103314	3320-723P
15X4	290-103315	300-103315	3320-724P
15X6	290-103316	300-103316	3320-726P
15X8	290-103317	300-103317	3320-728P
15X10	290-103318	300-103318	3320-730P
15X12	290-103319	300-103319	3320-732P
18	290-103342	300-103342	3320-180P
18X2	290-103332	300-103332	3320-781P
18X3	290-103333	300-103333	3320-783P
18X4	290-103334	300-103334	3320-784P
18X6	290-103335	300-103335	3320-786P
18X8	290-103336	300-103336	3320-788P
18X10	290-103337	300-103337	3320-790P
18X12	290-103338	300-103338	3320-792P
18X15	290-103340	300-103340	3320-795P
21	290-103367	300-103367	3320-210P
21X2	290-103355	300-103355	3320-841P
21X3	290-103356	300-103356	3320-843P
21X4	290-103357	300-103357	3320-844P
21X6	290-103358	300-103358	3320-846P
21X8	290-103359	300-103359	3320-848P
21X10	290-103360	300-103360	3320-850P
21X12	290-103361	300-103361	3320-852P
21X15	290-103363	300-103363	3320-855P
21X18	290-103365	300-103365	3320-858P
24	290-103381	300-103381	3320-240P
24X2	290-103368	300-103368	3320-901P
24X3	290-103369	300-103369	3320-903P
24X4	290-103370	300-103370	3320-904P
24X6	290-103371	300-103371	3320-906P
24X8	290-103372	300-103372	3320-908P
24X10	290-103373	300-103373	3320-910P
24X12	290-103374	300-103374	3320-912P
24X15	290-103376	300-103376	3320-915P
24X18	290-103378	300-103378	3320-918P
24X21	290-103380	300-103380	3320-921P
27	2920-270	3020-270	3320-270P
27X4	2920-934	3020-934	3320-934P
27X6	2920-936	3020-936	3320-936P
27X8	2920-938	3020-938	3320-938P
27X10	2920-940	3020-940	3320-940P
27X12	2920-942	3020-942	3320-942P
27X15	2920-945	3020-945	3320-945P
27X18	2920-948	3020-948	3320-948P



Size	80 PSI	100 PSI	125 PSI
	Prod Code:310 Part Number	Prod Code:320 Part Number	Prod Code:330 Part Number
Cross (Socket x Socket x Socket x Socket) (continued)			
27X21	2920-951	3020-951	3320-951P
27X24	2920-954	3020-954	3320-954P



Size	80 PSI	100 PSI	125 PSI
	Prod Code:310 Part Number	Prod Code:320 Part Number	Prod Code:330 Part Number
Cross (Gasket x Gasket x Gasket x Gasket)			
6	290-104001	300-104001	3320-0602P
6X4	290-104000	300-104000	3320-5322P
8	290-104006	300-104006	3320-0802P
8X4	290-104004	300-104004	3320-5822P
8X6	290-104005	300-104005	3320-5852P
10	290-104012	300-104012	3320-1002P
10X4	290-104009	300-104009	3320-6242P
10X6	290-104010	300-104010	3320-6262P
10X8	290-104011	300-104011	3320-6282P
12	290-104019	300-104019	3320-1202P
12X4	290-104015	300-104015	3320-6642P
12X6	290-104016	300-104016	3320-6662P
12X8	290-104017	300-104017	3320-6682P
12X10	290-104018	300-104018	3320-6702P
15	290-104036	300-104036	3320-1502P
15X4	290-104030	300-104030	3320-7242P
15X6	290-104031	300-104031	3320-7262P
15X8	290-104032	300-104032	3320-7282P
15X10	290-104033	300-104033	3320-7302P
15X12	290-104034	300-104034	3320-7322P
18	290-104057	300-104057	3320-1802P
18X4	290-104049	300-104049	3320-7842P
18X6	290-104050	300-104050	3320-7862P
18X8	290-104051	300-104051	3320-7882P
18X10	290-104052	300-104052	3320-7902P
18X12	290-104053	300-104053	3320-7922P
18X15	2920-7952	3020-7952	3320-7952P
21	290-104082	300-104082	3320-2102P
21X4	290-104072	300-104072	3320-8442P
21X6	290-104073	300-104073	3320-8462P
21X8	290-104074	300-104074	3320-8482P
21X10	290-104075	300-104075	3320-8502P
21X12	290-104076	300-104076	3320-8522P
21X15	290-104078	300-104078	3320-8552P
21X18	290-104080	300-104080	3320-8582P
24	2920-2402	3020-2402	3320-2402P
24X4	2920-9042	3020-9042	3320-9042P
24X6	2920-9062	3020-9062	3320-9062P
24X8	2920-9082	3020-9082	3320-9082P
24X10	2920-9102	3020-9102	3320-9102P
24X12	2920-9122	3020-9122	3320-9122P
24X15	2920-9152	3020-9152	3320-9152P
24X18	2920-9182	3020-9182	3320-9182P
24X21	2920-9212	3020-9212	3320-9212P
27	2920-2702	3020-2702	3320-2702P
27X4	2920-9342	3020-9342	3320-9342P



Suitable for Oil-Free air handling to 25 psi, not for distribution of compressed air or gas


JJ DOWNS INDUSTRIAL PLASTICS INC.

416.236.1884
Toronto, ON
JJDOWNS.COM




Irrigation & Turf Product
PVC 80, 100 & 125 PSI PIP Fabricated Fittings

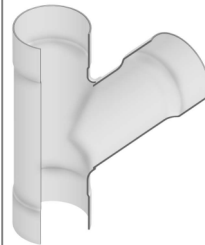
Crosses

Size	80 PSI	100 PSI	125 PSI
	Prod Code:310 Part Number	Prod Code:320 Part Number	Prod Code:330 Part Number
Cross (Gasket x Gasket x Gasket) (continued)			
 27X6	2920-9362	3020-9362	3320-9362P
27X8	2920-9382	3020-9382	3320-9382P
27X10	2920-9402	3020-9402	3320-9402P
27X12	2920-9422	3020-9422	3320-9422P
27X15	2920-9452	3020-9452	3320-9452P
27X18	2920-9482	3020-9482	3320-9482P
27X21	2920-9512	3020-9512	3320-9512P
27X24	2920-9542	3020-9542	3320-9542P

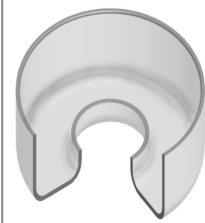
PIP x IPS Crosses

Size	80 PIP	100 PIP	125 PIP
	Prod Code:319 Part Number	Prod Code:329 Part Number	Prod Code:339 Part Number
PIP x IPS Cross (Socket x Socket x Socket)			
 6	2920-060PXI	3020-060PXI	3320-060PXI
8	2920-080PXI	3020-080PXI	3320-080PXI
8X6	2920-585PXI	3020-585PXI	3320-585PXI
10	2920-100PXI	3020-100PXI	3320-100PXI
10X6	2920-626PXI	300-103700	3320-626PXI
10X8	2920-628PXI	3020-628PXI	3320-628PXI
12	2920-120PXI	3020-120PXI	3320-120PXI
12X6	2920-666PXI	3020-666PXI	3320-666PXI
12X8	2920-668PXI	3020-668PXI	3320-668PXI
12X10	2920-670PXI	3020-670PXI	3320-670PXI
15X6	2920-726PXI	3020-726PXI	3320-726PXI
15X8	2920-728PXI	3020-728PXI	3320-728PXI
15X10	2920-730PXI	3020-730PXI	3320-730PXI
15X12	2920-732PXI	3020-732PXI	3320-732PXI
18X6	2920-786PXI	3020-786PXI	3320-786PXI
18X8	2920-788PXI	3020-788PXI	3320-788PXI
18X10	2920-790PXI	3020-790PXI	3320-790PXI
18X12	2920-792PXI	3020-792PXI	3320-792PXI
21X6	2920-846PXI	3020-846PXI	3320-846PXI
21X8	2920-848PXI	3020-848PXI	3320-848PXI
21X10	2920-850PXI	3020-850PXI	3320-850PXI
21X12	2920-852PXI	3020-852PXI	3320-852PXI
24X6	2920-906PXI	3020-906PXI	3320-906PXI
24X8	2920-908PXI	3020-908PXI	3320-908PXI
24X10	2920-910PXI	3020-910PXI	3320-910PXI
24X12	2920-912PXI	3020-912PXI	3320-912PXI

Wyes

Size	80 PSI	100 PSI	125 PSI
	Prod Code:310 Part Number	Prod Code:320 Part Number	Prod Code:330 Part Number
Wyes (Socket x Socket x Socket)			
 6	2975-060		
6X4	2975-532		
8	2975-080		
8X4	2975-582		
8X6	2975-585		
10	2975-100		
10X4	2975-624		
10X6	2975-626		
10X8	2975-628		
12	2975-120		
12X4	2975-664		
12X6	2975-666		
12X8	2975-668		
12X10	2975-670		
15	2975-150		
15X4	2975-724		
15X6	2975-726		
15X8	2975-728		
15X10	2975-730		
15X12	2975-732		
18	2975-187		
18X4	2975-784		
18X6	2975-786		
18X8	2975-788		
18X10	2975-790		
18X12	2975-792		
18X15	2975-795		

Surface Reducers

Size	80 PSI	100 PSI	125 PSI
	Prod Code:310 Part Number	Prod Code:320 Part Number	Prod Code:330 Part Number
Surface Reducer (Socket)			
 6X2		300-102013	
6X3		300-102015	
8X2		300-102018	
8X3		300-102020	
8X4		300-102021	
10X2		300-102024	
10X3		300-102026	
10X4		300-102027	
10X6		300-102028	
12X2		300-102031	
12X3		300-102033	
12X4		300-102034	
12X6		300-102035	
12X8		300-102036	
15X2		300-102048	
15X3		300-102050	
15X4		300-102051	
15X6		300-102052	
15X8		300-102053	
15X10		300-102054	
18X2		300-102067	
18X3		300-102069	

Suitable for Oil-Free air handling to 25 psi, not for distribution of compressed air or gas




JJ DOWNS INDUSTRIAL PLASTICS INC.

416.236.1884
Toronto, ON
JJDOWNS.COM




Irrigation & Turf Product
PVC 80, 100 & 125 PSI PIP Fabricated Fittings

Surface Reducers

Size	80 PSI	100 PSI	125 PSI
	Prod Code:310 Part Number	Prod Code:320 Part Number	Prod Code:330 Part Number


Surface Reducer (Socket) (continued)

	18X4		300-102070	
	18X6		300-102071	
	18X8		300-102072	
	18X10		300-102073	
	18X12		300-102074	
	21X2		300-102088	
	21X3		300-102089	
	21X4		300-102090	
	21X6		300-102091	
	21X8		300-102092	
	21X10		300-102093	
	21X12		300-102094	
	21X15		300-102095	

Stub Surface Reducers

Size	80 PSI	100 PSI	125 PSI
	Prod Code:310 Part Number	Prod Code:320 Part Number	Prod Code:330 Part Number

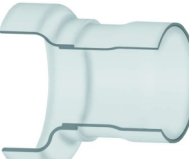
Stub Surface Reducer (Socket)

	6X4		30040-532	
	8X4		30040-582	
	8X6		30040-585	
	10X4		30040-624	
	10X6		30040-626	
	10X8		30040-628	
	12X4		30040-664	
	12X6		30040-666	
	12X8		30040-668	
	12X10		30040-670	
	15X4		30040-724	
	15X6		30040-726	
	15X8		30040-728	
	15X10		30040-730	
	15X12		30040-732	
	18X4		30040-784	
	18X6		30040-786	
	18X8		30040-788	
	18X10		30040-790	
	18X12		30040-792	
	18X15		30040-795	
	21X4		30040-844	
	21X6		30040-846	
	21X8		30040-848	
	21X10		30040-850	
	21X12		30040-852	
	21X15		30040-855	
	21X18		30040-858	
	24X4		30040-904	
	24X6		30040-906	
	24X8		30040-908	
	24X10		30040-910	
	24X12		30040-912	
	24X15		30040-915	
	24X18		30040-918	

Eccentric Stub Surface Reducer

Size	80 PSI	100 PSI	125 PSI
	Prod Code:310 Part Number	Prod Code:320 Part Number	Prod Code:330 Part Number

Eccentric Stub Surface Reducer (Socket)

	6X2		3040-528E	
	6X3		3040-530E	
	6X4		3040-532E	
	8X2		3040-578E	
	8X3		3040-580E	
	8X4		3040-582E	
	8X6		3040-585E	
	10X2		3040-621E	
	10X3		3040-623E	
	10X4		3040-624E	
	10X6		3040-626E	
	10X8		3040-628E	
	12X2		3040-661E	
	12X4		3040-664E	
	12X6		3040-666E	
	12X8		3040-668E	
	15X2		3040-721E	
	15X3		3040-723E	
	15X4		3040-724E	
	15X6		3040-726E	
	15X8		3040-728E	
	15X10		3040-730E	
	15X12		3040-732E	
	18X2		3040-781E	
	18X3		3040-783E	
	18X4		3040-784E	
	18X6		3040-786E	
	18X8		3040-788E	
	18X10		3040-790E	
	18X12		3040-792E	
	18X15		3040-795E	
	21X2		3040-841E	
	21X3		3040-843E	
	21X4		3040-844E	
	21X6		3040-846E	
	21X8		3040-848E	
	21X10		3040-850E	
	21X12		3040-852E	
	21X15		3040-855E	
	21X18.701		3040-858E	
	24X2		3040-901E	
	24X3		3040-903E	
	24X6		3040-906E	
	24X8		3040-908E	
	24X10		3040-910E	
	24X12		3040-912E	
	24X15		3040-915E	
	24X18		3040-918E	
	27X3		3040-933E	
	27X4		3040-934E	
	27X6		3040-936E	
	27X8		3040-938E	
	27X10		3040-940E	
	27X12		3040-942E	
	27X15		3040-945E	

Suitable for Oil-Free air handling to 25 psi, not for distribution of compressed air or gas




JJ DOWNS INDUSTRIAL PLASTICS INC.

416.236.1884
Toronto, ON
JJDOWNS.COM




Irrigation & Turf Product
PVC 80, 100 & 125 PSI PIP Fabricated Fittings

Eccentric Stub Surface Reducer

Size	80 PSI	100 PSI	125 PSI
	Prod Code: 310	Prod Code: 320	Prod Code: 330
	Part Number	Part Number	Part Number


Eccentric Stub Surface Reducer (Socket) (continued)

	27X18		3040-948E
	27X21		3040-951E
	27X24		3040-954E

Caps

Size	80 PSI	100 PSI	125 PSI
	Prod Code:310	Prod Code:320	Prod Code:330
	Part Number	Part Number	Part Number

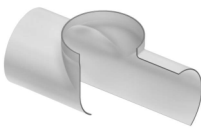
Cap (Socket)

	6		300-107540
	8		300-107541
	10		300-107542
	12		300-107543
	15		300-107545
	18		300-107547
	21		300-107549
	24		300-107550
	27		3047-270
30		3047-300	

Glue-On Saddles

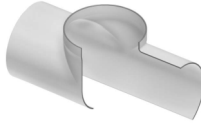
Size	Prod Code:310	Prod Code:320	Prod Code:330
	Part Number	Part Number	Part Number

Saddle (Socket)

	6X2		300-101789
	6X3		300-101797
	6X4		300-101804
	8X2		300-101790
	8X3		300-101798
	8X4		300-101805
	8X6		300-101811
	10X2		300-101791
	10X3		300-101799
	10X4		300-101806
	10X6		300-101812
	10X8		300-101817
	12X2		300-101792
	12X3		300-101800
	12X4		300-101807
	12X6		300-101813
	12X8		300-101818
	12X10		300-101822
	15X2		300-101793
	15X3		300-101801
15X4		300-101808	

Size	Prod Code:310	Prod Code:320	Prod Code:330
	Part Number	Part Number	Part Number

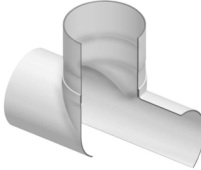
Saddle (Socket) (continued)

	15X6		300-101814
	15X8		300-101819
	15X10		300-101823
	15X12		300-101826
	18X2		300-101794
	18X3		300-101802
	18X4		300-101809
	18X6		300-101815
	18X8		300-101820
	18X10		300-101824
	18X12		300-101827
	18X15		300-101829

NOTE: When assembling Spears® Saddles to PVC pipe, Spears® Manufacturing Company recommends Spears® PVC-19 Solvent Cement and Primer-68 or Primer -70, or equivalent. Although good connections may be accomplished without Saddle Straps, Spears® Manufacturing Company recommends the use of a clamp or strap device during the assembly step to insure good compression between the pipe and fitting surfaces as the solvent cures. PVC Fabricated Saddle connections are designed for use in low pressure open ended systems and are not intended for use in high pressure applications. For further details, contact Spears® Technical Services Department. Also applies to stub saddles.

Size	Prod Code:310	Prod Code:320	Prod Code:330
	Part Number	Part Number	Part Number

Stub Saddle (Socket)

	6X2		300-101884
	6X3		300-101892
	6X4		300-101899
	8X2		300-101885
	8X3		300-101893
	8X4		300-101900
	8X6		300-101906
	10X2		300-101886
	10X3		300-101894
	10X4		300-101901
	10X6		300-101907
	10X8		300-101912
	12X2		300-101887
	12X3		300-101895
	12X4		300-101902
	12X6		300-101908
	12X8		300-101913
	12X10		300-101917
	15X2		300-101888
	15X3		300-101896
	15X4		300-101903
	15X6		300-101909
	15X8		300-101914
	15X10		300-101918
	15X12		300-101921
18X2		300-101889	
18X3		300-101897	
18X4		300-101904	
18X6		300-101910	
18X8		300-101915	
18X10		300-101919	
18X12		300-101922	

Suitable for Oil-Free air handling to 25 psi, not for distribution of compressed air or gas




JJ DOWNS INDUSTRIAL PLASTICS INC.

416.236.1884
Toronto, ON
JJDOWNS.COM

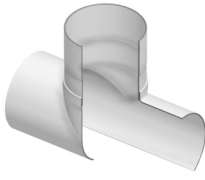


Irrigation & Turf Product
PVC 80, 100 & 125 PSI PIP Fabricated
Fittings & Pipe Flanges

Glue-On Saddles

Size	Prod Code:310	Prod Code:320	Prod Code:330
	Part Number	Part Number	Part Number

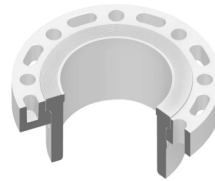
Stub Saddle (Socket) (continued)

	18X15	300-101924		
---	--------------	------------	--	--

Pipe Flanges

Part Number	Size	Std Pk	Mstr Ctn	Prod Code
-------------	------	--------	----------	-----------

Flange Van Stone Style -PIP



Flange x PIP Socket

125 psi Maximum Internal Pressure Rating @ 73°F (23°C)

354-060	6X6.140	5	0	080
354-060F	6X6.140	1	4	320
354-080	8X8.160	2	0	080
354-080F	8X8.160	1	2	320
354-100	10X10.200	2	0	081
354-100F	10X10.200	1	2	320
354-120	12X12.240	2	0	081
354-120F	12X12.240	1	2	320
354-150F	14X15.300	1	0	320
354-151F	16X15.300	1	0	320
354-182F	18X18.360	1	0	320
354-181F	18X18.701	1	0	320
354-200F	20X20.400	1	0	320
354-201F	20X22.047	1	0	320
354-241F	24X24.803	1	0	320

For more information, refer to 80, 100 & 125 psi PIP Fabrication Fittings.

PIP = Plastic Irrigation Pipe (dimensions are NOT the same as IPS dimensions).

Sizes 6" - 16" are furnished with Glass Filled PVC ring.
 Sizes 18" - 24" are furnished with steel ring.

Suitable for Oil-Free air handling to 25 psi, not for distribution of compressed air or gas

 JJ DOWNS INDUSTRIAL PLASTICS INC.	 <small>international association of plastics distribution</small>	
416.236.1884	Toronto, ON	JJ DOWNS.COM