



Oracle Red Bull Racing eScooters

**RBS#01
User Manual**





Your Oracle Red Bull Racing RBS#01 eScooter

Now that you are the proud owner of the Oracle Red Bull Racing eScooter, we want to keep you safe whilst you experience a whole new level of eScooter riding. We have created this owners manual to provide important safety, performance and maintenance information about your new eScooter. Please read this manual carefully and keep it for future reference.

Riding your eScooter is only a few steps away

For your convenience, your Oracle Red Bull Racing RBS#01 eScooter is delivered to you with only minor assembly required. This User Manual contains a few steps for completing the assembly of your scooter. Make sure you read your User Manual prior to commencing assembly and riding.

If you need support with assembly, please visit our website to contact our support team.

For peace of mind, your Oracle Red Bull Racing RBS#01 eScooter comes with a two (2) year frame warranty, and two (2) year warranty on parts. You can find your warranty outlined in section six (6).



Contents

1. Safety and Disclaimer	6-7	3.3.3 Lights	20
1.1 Safe riding	6	3.4 How to ride your eScooter	20-25
1.2 Different riding conditions	6	3.5 Riding mode - cruise control	25
1.3 Liability and waivers	7	4 Maintaining your RBS#01 eScooter	26-27
1.3.1 Foot board grip	7	4.1 Servicing	26
1.3.2 Helmet	7	4.1.1 Foot board grip	26
1.3.3 Other safety equipment	7	4.1.2 Tire	26
2. Assembly	8-17	4.1.3 Brake pads and brake rotor	27
3. How to ride your RBS#01 eScooter	18-25	4.1.4 Battery	27
3.1 Your RBS#01 eScooter	18	4.1.5 Battery charger	27
3.2 Know before you ride	19	5. Warnings	28
3.3 Using the display	19	5.1 Error Codes	28
3.3.1 Turning your eScooter on and off	19	6. Warranty	29-30
3.3.2 Switching Power Assist (PAS) levels	19		

1. Safety and Disclaimer

1.1 Safe riding

Like any sport, riding an eScooter involves risk of injury. By choosing to ride an Oracle Red Bull Racing eScooter, you assume the responsibility for that risk. It's important that you understand and practice the rules of safe and responsible riding and proper use and maintenance to reduce the risk of injury. This manual contains WARNINGS and CAUTIONS concerning the consequences of failing to adhere to safe riding practices and properly maintain your eScooter.



The word WARNING indicates a potentially hazardous situation that, if not avoided, could result in serious injury or death.



The word CAUTION indicates a potentially hazardous situation or unsafe practice that, if not avoided, could result in minor or moderate injury, serious damage to your Oracle Red Bull Racing eScooter and the voiding of your warranty.

Maximum rider weight: 120kg

Adhere to local regulations regarding children using this product. Adult supervision is required.

Adhere to local regulations regarding eScooter use. It is the customer's sole responsibility to ensure that the eScooter is at all times used in accordance with all relevant laws, regulations and rules (as updated or amended from time to time) which may vary depending on the location where the eScooter is used.

Use of the eScooter may not be permitted or lawful on public roads or paths, and public area and relevant laws should always be adhered to.

1.2 Different riding conditions

Your Oracle Red Bull Racing eScooter is equipped with 11 x 5.5" soft compound "intermediate" tires to improve grip, traction and stability. The oversized deck and wheel package delivers a very stable and approachable ride. It's important to note that different weather conditions greatly affect the handling of your eScooter and you should ride to conditions.

1.3 Liability and waivers

Whether you're a pro or brand new to riding, it's always important to ride safely. Here are a few tips to ensure that you and your Oracle Red Bull Racing eScooter stay safe.

1.3.1 Foot board grip

Your Oracle Red Bull Racing eScooter is shipped with a foot board grip. This should always be installed prior to use to ensure maximum grip and prevent injury. Failure to install this grip may result in injury.

1.3.2 Helmet

Always wear a fully certified and approved helmet (as per local regulations) when riding your Oracle Red Bull Racing eScooter. Be sure to affix the helmet properly using the chin strap and follow the manufacturer's instructions for proper use.

1.3.3 Other safety equipment

It's a good idea to wear wrist guards, elbow pads, knee pads or other applicable protective equipment when using your Oracle Red Bull Racing eScooter. Always wear enclosed shoes to improve grip.



2. Assembly

Tools required:

4mm torque wrench preset to 12Nm
10mm hex head key
10mm hex key

Step 1

Carefully remove packing tape to open up the external cardboard box.



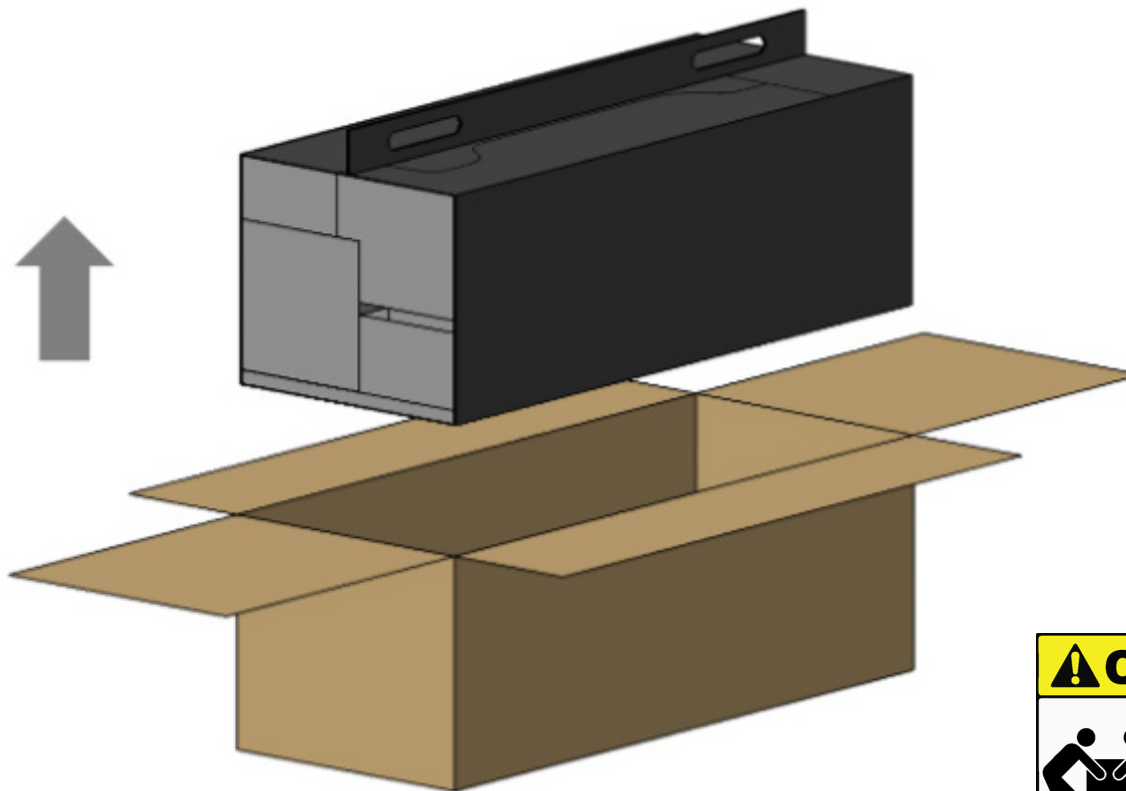
Step 2

Lift the cardboard tab on the internal cardboard box.



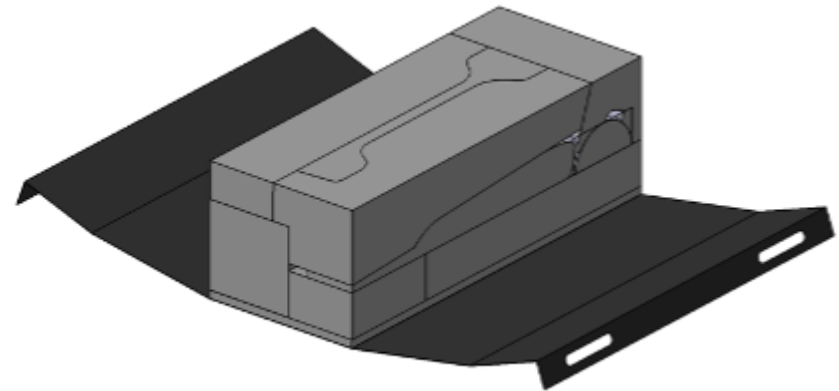
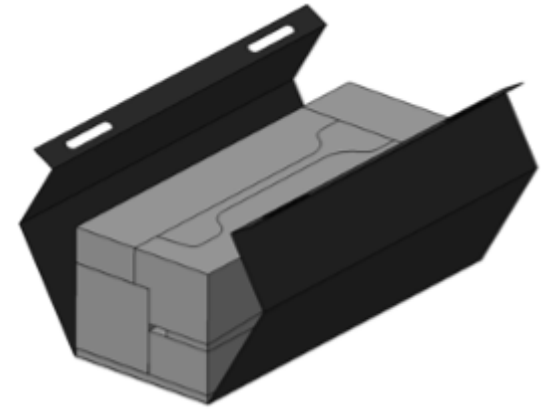
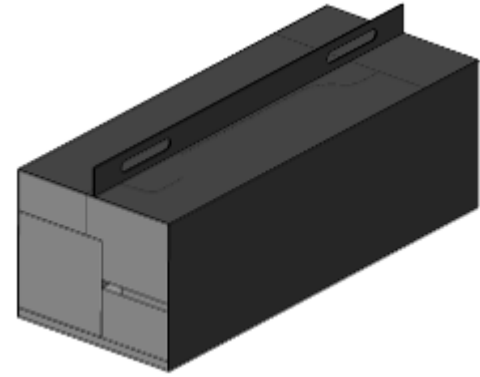


WARNING: Take care to lift the eScooter out from the cardboard packaging with two people, as the total weight is 40 kg.



Step 3

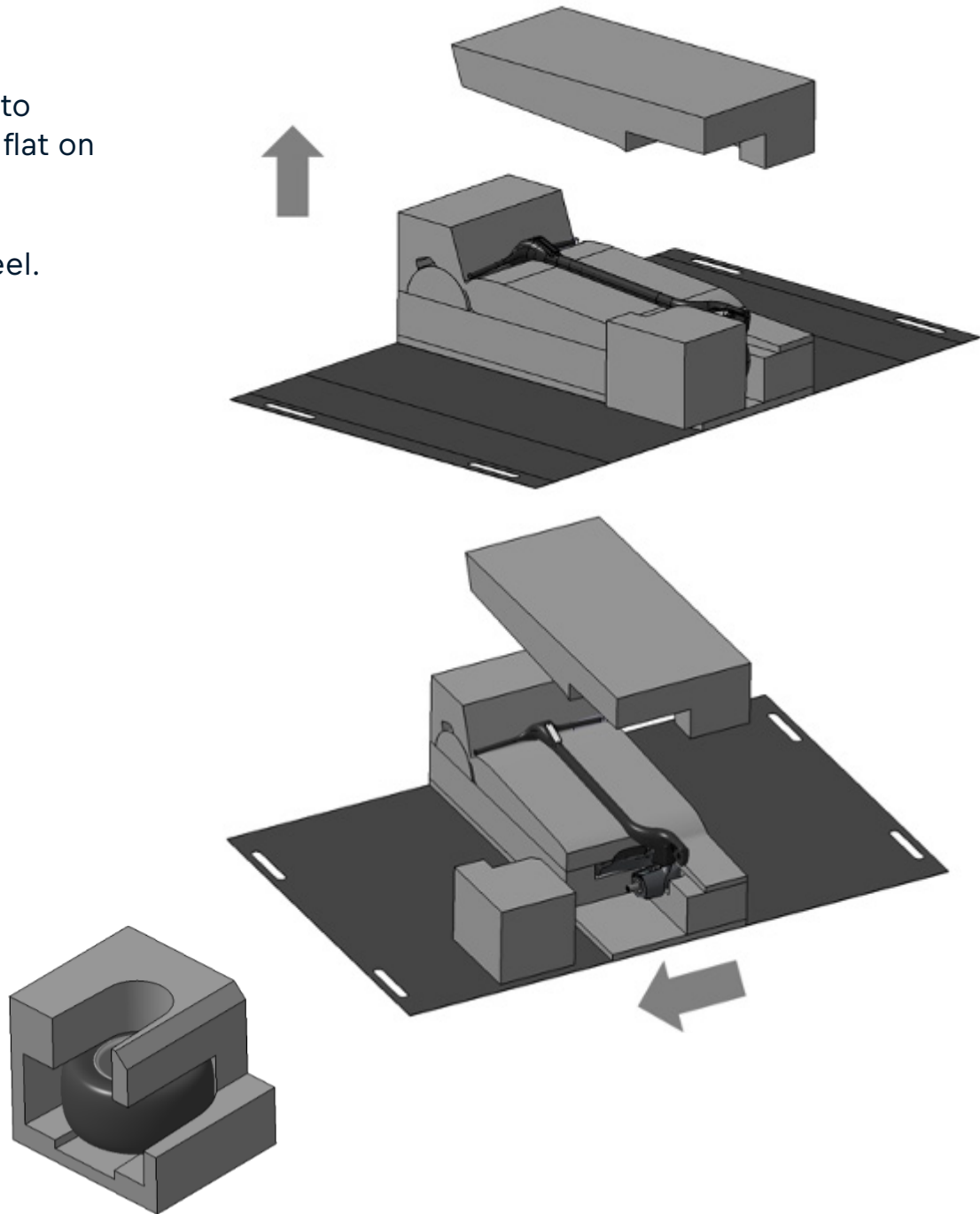
Open up the internal cardboard box, revealing the internal packaging for the scooter.



Step 4

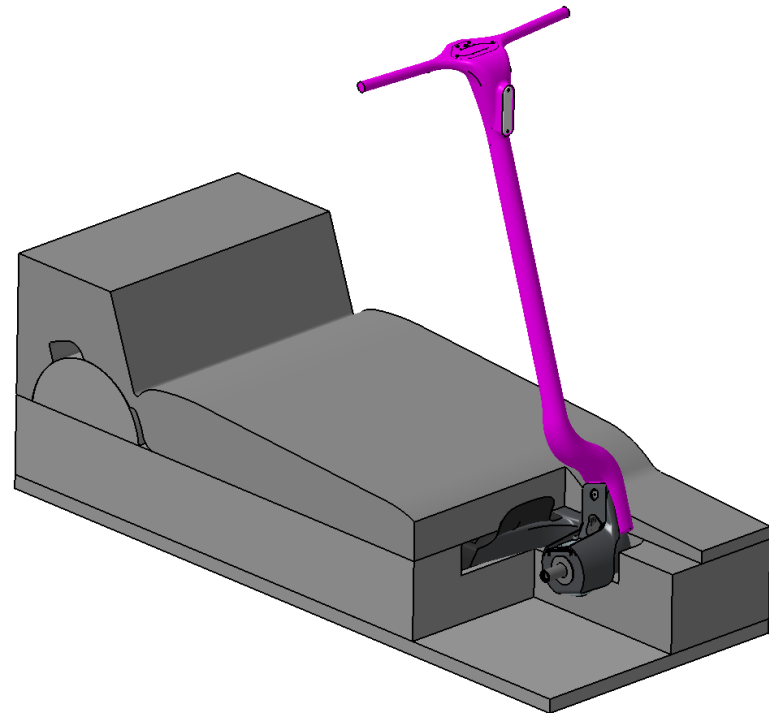
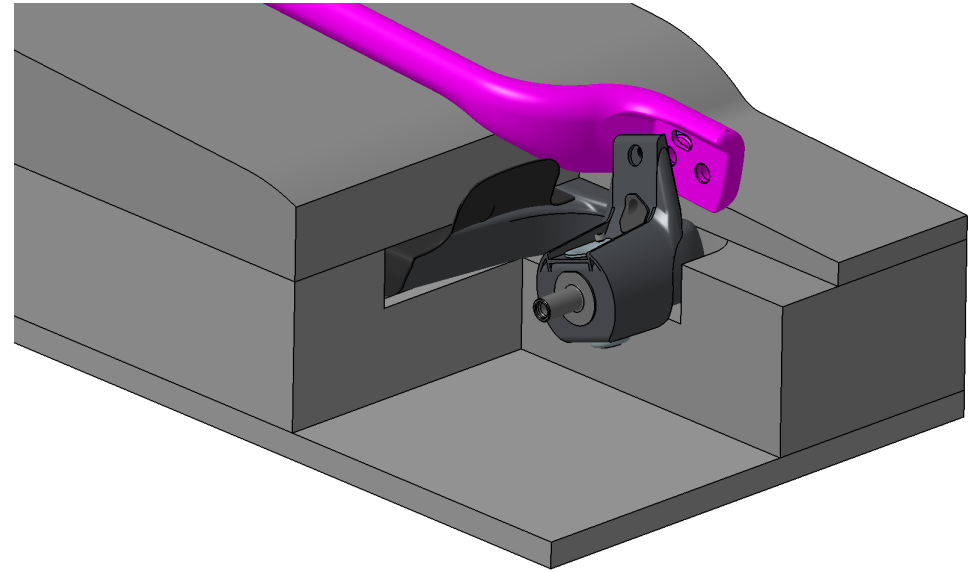
Remove the top layer of packaging, taking care to ensure the steerer for the scooter remains lying flat on the packaging beneath.

Remove the packaging containing the front wheel.



Step 5

Carefully lift the scooter steerer and handlebar assembly to an upright position. Line up the holes on the handlebar and steerer assembly with the front wheel mount (shown in purple).

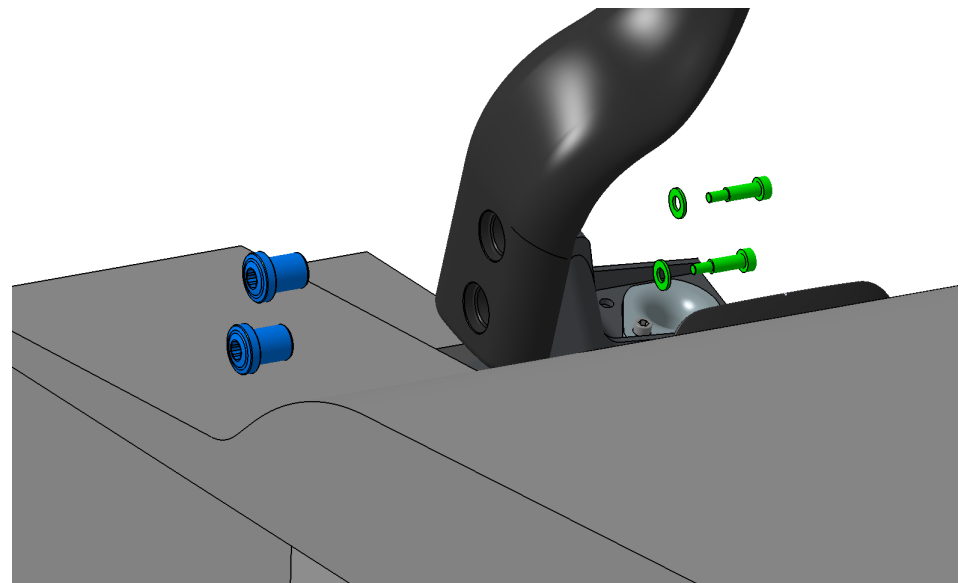
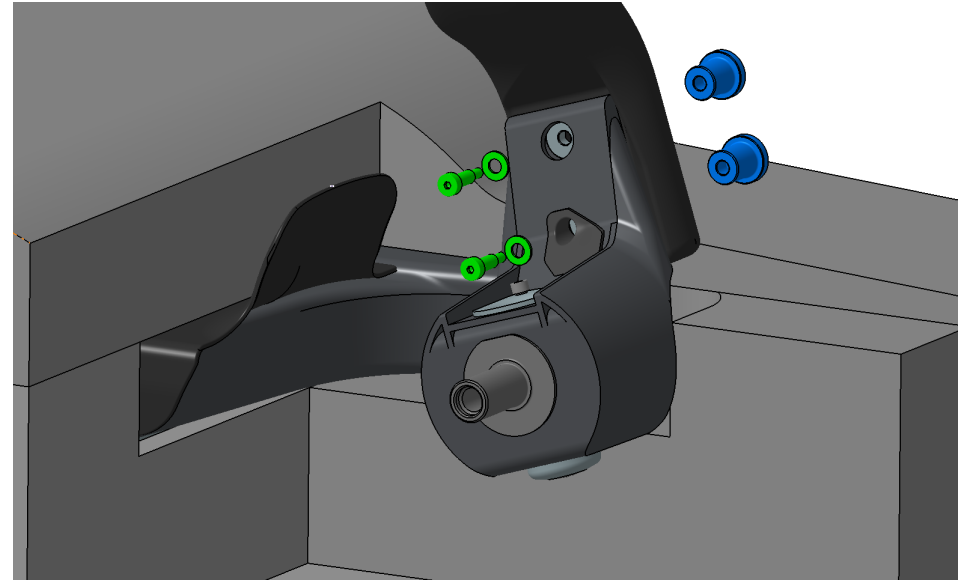


Step 6

Ensuring the steerer and steerer knuckle (shown in black) are aligned, place the two 10mm steerer external bolts (shown in blue) into the two holes from the outside face of the steerer.

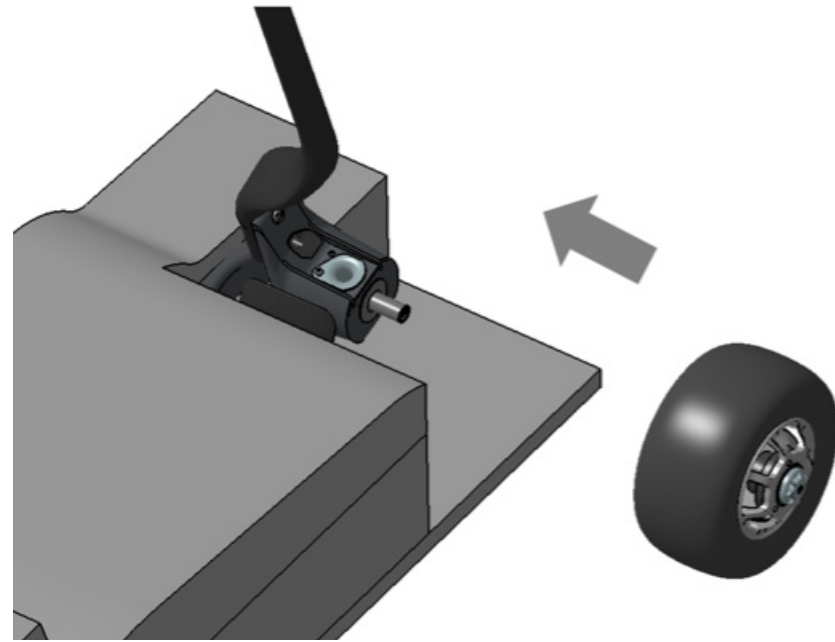
Fit the two 4mm hex head bolts (shown in green) using the 4mm hex key preset torque wrench and whilst holding the external bolts in place using the 10mm hex key wrench, tighten the steering column to the steering knuckle using 2x M4 bolts and washers provided.

Tools required: 4mm torque wrench preset to 12Nm,
10mm hex head key to hold external bolts



Step 7

Taking care to align the wheel axle and the wheel, slide the front wheel onto the wheel axle.



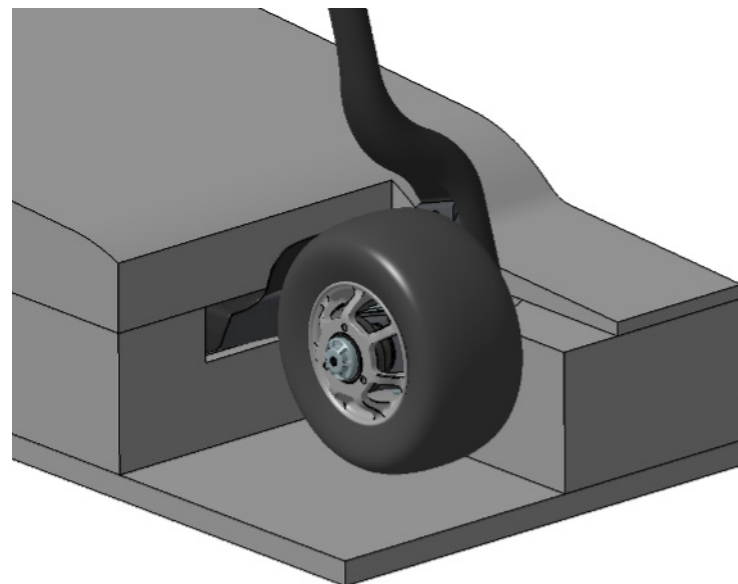
Step 8

Using the 10mm hex wrench, fix the front wheel to the front wheel axle using the front wheel bolt. Tighten by hand.

You can also utilise a torque wrench set to 40Nm to tighten the front wheel axle retention bolt.

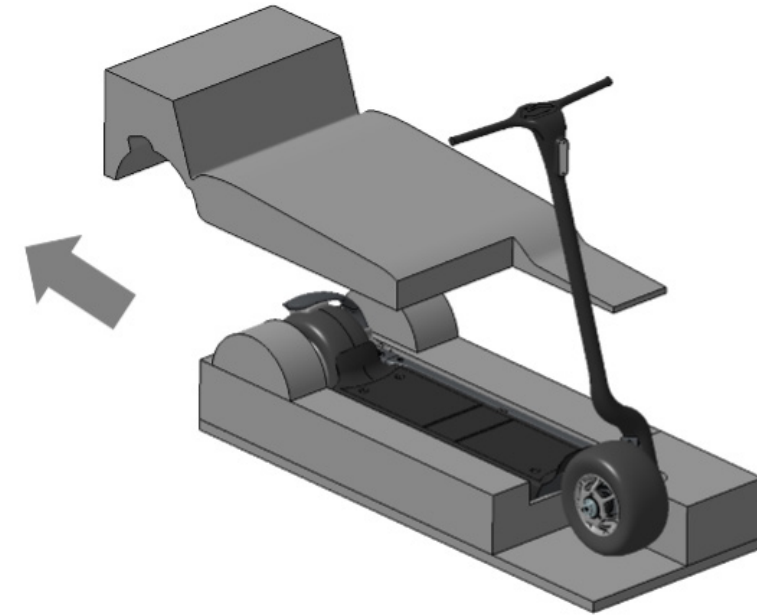
Tools required: 10mm hex key

Optional: torque wrench with 40Nm preset



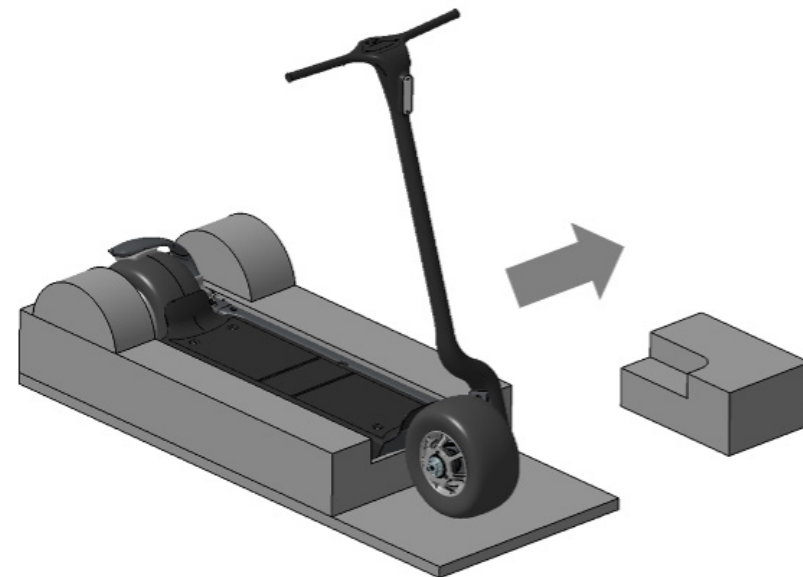
Step 9

Remove the top packaging cover from the scooter.



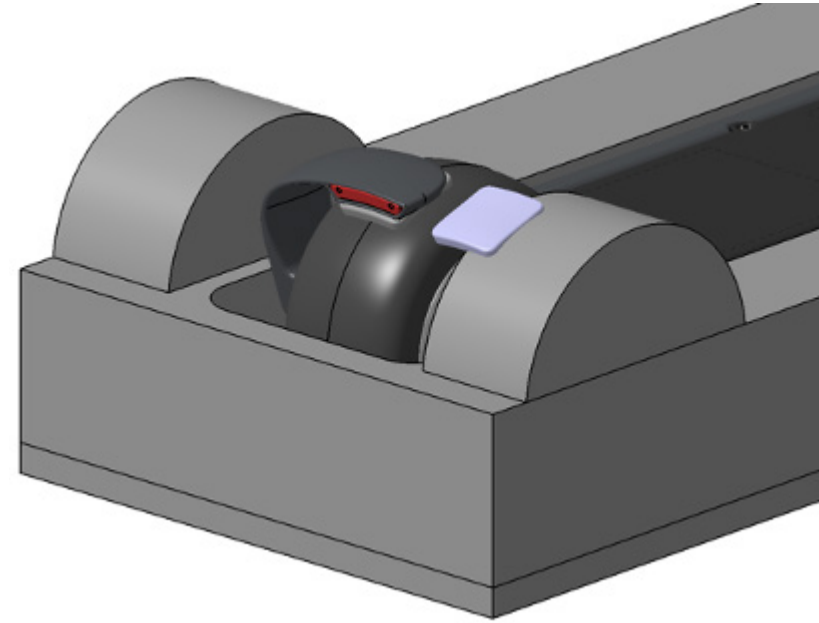
Step 10

Remove the second side packaging cover from the scooter.



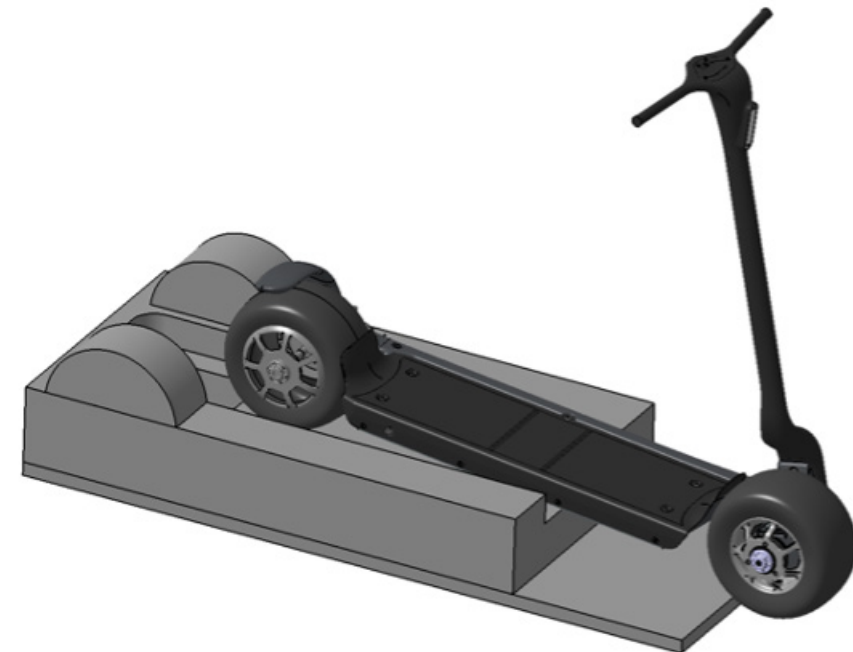
Step 11

Remove the packaging from between the rear light vane and the rear tire.



Step 12

Carefully roll the scooter out from the packaging base.



Step 13

Prior to riding your scooter, affix the rubber grip provided in the scooter accessories pack to the foot board.

Ensuring there is no dust or debris on the foot board, remove the adhesive backing from the foot board grip and install to the foot board, ensuring that you do not cover any of the foot board bolts.



CAUTION: Using your scooter without the foot board grip tape will void your warranty and poses safety risks. Always ensure that the scooter foot board grip is installed on the foot board.

3. How to ride your RBS#01 eScooter

3.1 Your RBS#01 eScooter

- 1. Steerer
- 2. Handlebars
- 3. Deck/foot board
- 4. Rear motor
- 5. Braking system
- 6. Rear vane
- 7. Front light
- 8. Brake light
- 9. Charging point
- 10. Brake lever
- 11. Display
- 12. Power button
- 13. Throttle



3.2 Know before you ride

The Oracle Red Bull Racing eScooter has been designed to provide a stable, fast and incredible riding experience. The eScooter is designed to be intuitive. Anyone can learn the basics in just a few minutes.

Before you get on your eScooter

- Always do a safety check before each ride
- Read all safety instructions
- Wear a helmet and other protective gear

3.3 Using the Display

3.3.1 Turning your eScooter on and off

To switch on, hold the power button for two seconds.
To switch off, hold the power button for two seconds.



3.3.2 Switching Power Assist (PAS) levels

When the display is on, single press the power button to switch the levels between ECO, D and S.

ECO - 9 mph

D - cruise control set to 15 mph

S - cruise control set to 20 mph



3.3.3 Lights

When the display is on, double press the power button to turn on the front and rear lights. The light icon on the display will light up accordingly. Use the same method (double press the power button) to turn off the front and rear lights.

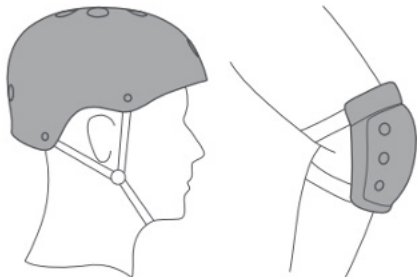


Scooter system automatically turns off after no operation for 10 minutes.

Note: while switching on/off, switching levels, turning on lights or entering constant speed cruise, there will be a prompt "beep" sound.

3.4 How to ride your eScooter

Wear a helmet and other protective gear.



Turn on the scooter and check the power indicator.



Hold onto the handlebars with both hands, step onto the deck with one foot, keeping the other foot firmly planted on the ground to provide balance. Kick off (as you would a regular analog scooter).

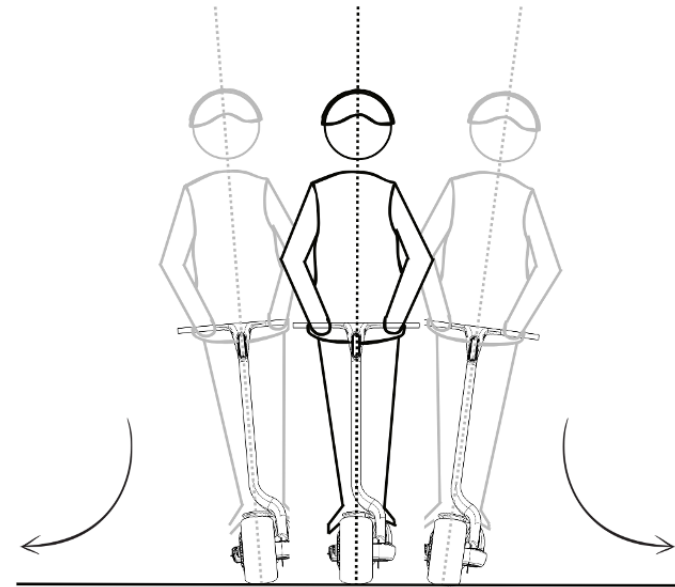


Once the scooter begins to coast, place both feet on the deck and gently press the throttle away from you to engage the motor. The eScooter motor will engage when the scooter exceeds 1.8 mph.



To turn the scooter, lean slightly towards the direction you wish to travel and turn the handlebars gently.

To ensure safe riding at speed, note that turning angle is limited to 35° to left and 45° to the right.

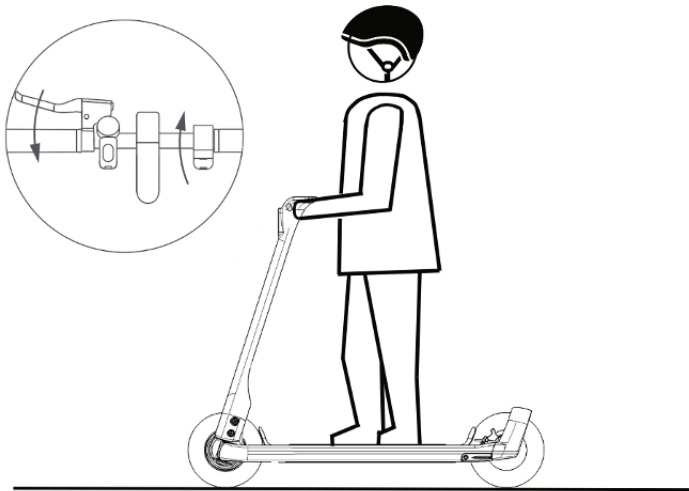


WARNING: Do not turn the handlebars sharply when traveling at speed, as this may result in loss of control and severe injury.

To slow, reduce pressure on the throttle and then release all pressure on the throttle. The motor will cut out and the scooter will begin to slow. Apply gentle pressure to the brake lever to engage the brake at the rear wheel. A magnetic sensor in the brake lever will automatically cut off power to the motor (even if the throttle is still held in the on position).

The motor cut-off sensor is engaged when the brake lever is pulled. The motor will stop operating while pressing the brake and the rear brake light will illuminate. Releasing the brake lever will in turn stop the rear light illuminating.

Please note that the motor cut-off sensor will prevent acceleration from a standing start unless the scooter is traveling at more than 1.8 mph.



WARNING: Do not ride your eScooter in the rain. Traction (grip) and eScooter handling performance are hampered by adverse weather conditions.

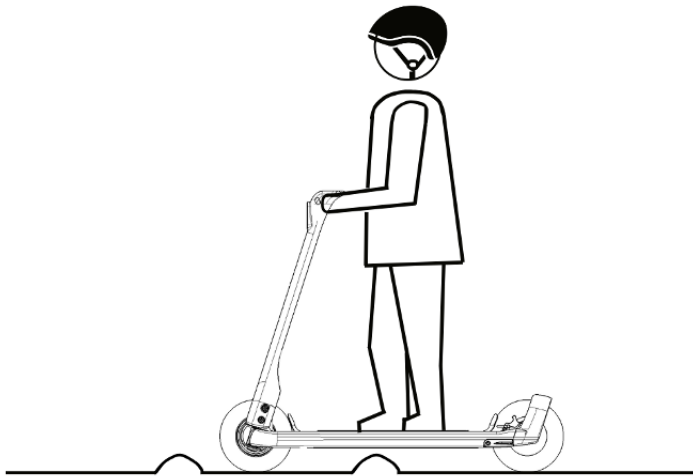




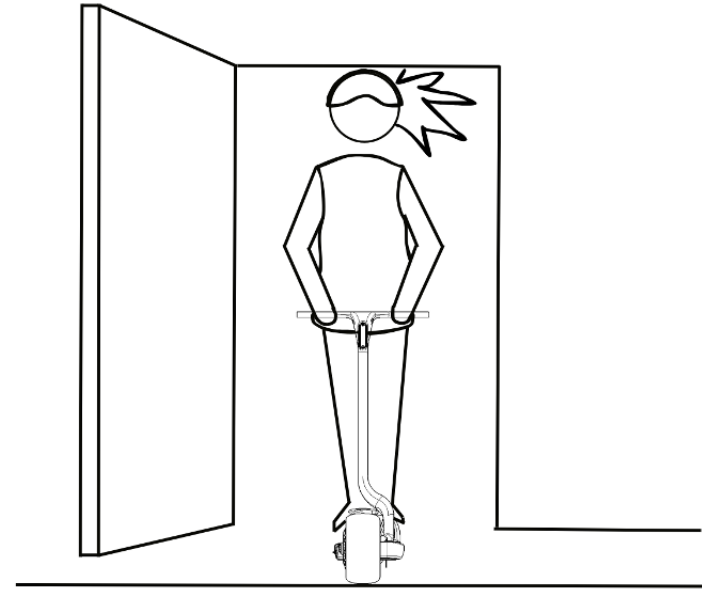
WARNING: Do not ride through standing water.




WARNING: Slow your speed to between 3.1 - 6.2 mph when riding over speed bumps.



WARNING: Take care when riding through openings. Never ride your eScooter through doorways or into elevators.




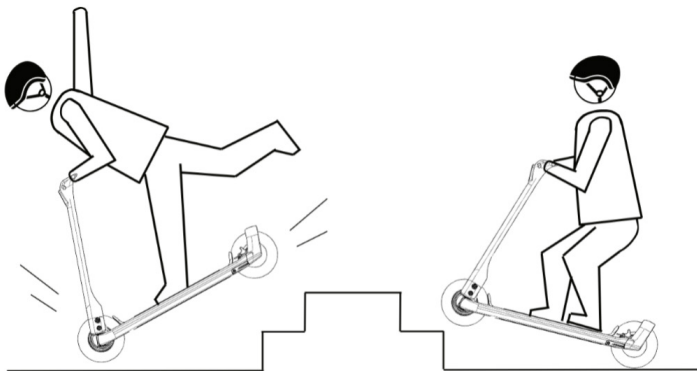
 WARNING: Do not accelerate downhill.




 WARNING: Do not press the throttle when you are walking with your eScooter.




 WARNING: Do not ride your scooter up or down steps.




 WARNING: Always steer clear of obstacles.





 **WARNING:** Do not hang bags off the handlebars. Steering may be adversely affected and lead to injury.



 **WARNING:** Keep both feet on the deck at all times whilst riding the eScooter.



 **WARNING:** Do not ride with anybody else on the eScooter with you, including children.

 **WARNING:** Locking up the rear tire through hard braking will create flat spots and negatively impact handling and performance.

3.5 Riding mode - cruise control

Cruise control can be engaged by holding the throttle to accelerate to 15 mph. Once at 15 mph, constant hold of the throttle for three seconds will result in an audible beep sound. The scooter enters cruise control mode and will maintain 15 mph without holding the throttle.

Cruise control will be disengaged as soon as the brake lever is pulled or the throttle pressed again.

4. Maintaining your RBS#01 eScooter

4.1 Servicing

Doing regular safety checks will help extend the life of your Oracle Red Bull Racing eScooter.

We recommend that you carefully inspect your eScooter before every ride to ensure that there are no loose, damaged or unusually worn parts. Ensure that the air pressure of your tires are adequate before every ride. All nuts, bolts and fixings should be tight.

For recommend servicing partners, please see our website.

If you have any questions on servicing your eScooter, contact support via our website.

4.1.1 Foot board grip

Inspect the foot board grip for any cracks or tears in the grip tape. If you notice any damage, contact our support team via our website to purchase a replacement.



WARNING: Riding with a damaged foot board grip is extremely dangerous. Replace immediately.

4.1.2 Tire

Check your eScooter tire for any cuts in the tread and sidewall. Be sure that your tires are sufficiently inflated to the recommended tire pressure of 50 PSI. Maximum tire pressure for the tires is 57 PSI.

For a softer, more forgiving ride you can decrease the tire pressure to as low as 40 PSI but please note that tire pressure makes a significant difference to your eScooter's range, top speed, acceleration, tire wear and ride quality.



WARNING: Exceeding the maximum pressure of 57 PSI (3.9 bar) could damage your eScooter and result in injury. It will also void your warranty.

Consumable - As tires wear, replacement tires can be purchased from Burriss Racing:
www.burrissracing.com

Tires specification is 11 x 5.50-6 Treaded Tire.

4.1.3 Brake pads and brake rotor

Just like the brake pads on your car or bike, the hydraulic brake pads and rotor will wear with use. Always inspect the brake pads prior to riding your eScooter to ensure there is sufficient pad and rotor material remaining. Brake rotors should be replaced when the braking surface becomes worn to less than 1.5mm in width. Brake pads should also be replaced when the brake pad wears to below the recommended dimension of 1.5mm.

If you are unsure that the wear on your brake rotor or brake pads is safe, take your eScooter to your nearest service center to request inspection and replacement as required.

For any queries, please contact our support team via our website.

4.1.4 Battery

Be careful not to overcharge or undercharge your battery. The battery should be charged at least once every two months. Failure to do so may void your warranty. You must dispose of lithium batteries according to local laws and regulations.



WARNING: If the battery pack appears to be damaged or is not holding a charge, please do not use it. For further assistance, please contact our support team via our website.



CAUTION: Do not expose the battery to extreme high or low temperatures. Exposure to extreme high or low temperatures may degrade or damage the battery pack.

4.1.5 Battery charger

Use only the Oracle Red Bull Racing eScooter charger provided with your eScooter to charge the battery.

How to charge your battery:

1. Ensuring the wall socket is set to "off" connect the charger to the wall socket and then to the eScooter. Turn the wall socket "on". A red light will show on the charger when the charge is in progress.
2. A green light will appear when the battery pack is fully charged and the charger will automatically stop charging.
3. Turn the wall socket to "off" and disconnect the charger from the eScooter.

5. Warnings

5.1 Error Codes



WARNING: If any of these error codes display on your eScooter handlebar display, please cease using the eScooter immediately and contact support.

Please reach out to our Support team via our website and provide the applicable error code so we are able to best assist you.

Error Code	Error Code Name
E1	Communication failure
E2	Motor cut-off sensor failure
E3	Phase cable short circuit
E6	Brake failure
E7	Throttle failure
E8	Over voltage protection

6. Warranty

Your Oracle Red Bull Racing eScooter is covered under warranty for a period of two (2) years from the date of purchase.

This warranty covers the eScooter chassis, handlebars and steerer, electronics (including battery) but does not cover consumables such as disc brake pads, disc brake rotor, front or rear tires.

Your eScooter serial number is located underneath the foot board on the frame of the scooter.

Warranty Part	Warranty/Guarantee Period*
Chassis	Two (2) years
Motor	Two (2) years
Electrical	Two (2) years
Battery	Two (2) years

* Our warranty does not include general wear and tear incurred from reasonable use.

The Consumer may have rights in relation to Goods under the relevant consumer. Nothing in these terms and conditions excludes or restricts any of the Consumer's statutory rights. Where the Goods are not purchased for personal, domestic or household use, we may limit the

Consumer's remedies to replacing or repairing the Goods or reimbursing the Consumer for the cost of repairing or replacing the Goods.

(1) The warranty offered by us applies in the event of a structural defect in the workmanship or materials at the time of receiving the delivered Goods, the Consumer shall be entitled to request from us to repair the defect or to supply replacement Goods (as ordered) which is free from those defects. This warranty is limited to defective workmanship, materials or goods and excludes normal wear and tear.

(2) In addition to the statutory warranty and guarantees, we voluntarily grant an extended warranty of two years

(3) Without any limitation of the statutory warranty rights of the Consumer, our voluntary warranty is subject to the following additional conditions:

- (i) The warranty does not cover damages caused by inappropriate or unspecified use for the particular Goods as described on our website, including:
- neglect of Goods (lack of care and maintenance);
 - failure to properly install or assemble the Goods or use a properly qualified technician for repairs or maintenance;

- use of any of the battery or electrical systems in a manner which is not expressly specified;
- modifications to the Goods which are not expressly specified;
- mounting and alteration of additional components that were not expressly approved by us or replacement of our original components with non-identical components;
- crash;
- jumps; or
- excessive loads of any other kind.

(4) We may refuse to remedy defective Goods in the manner requested by the Consumer if such remedy would result in unreasonable costs.

(5) We reserve the right to repair Goods or replace them with a new model. In the event that it is necessary to change the model we will endeavor to replace them in the original color subject to availability. Should the original color no longer be available, it may be that there are deviations from the original color.

(6) Guarantee rights are limited to the aforementioned and any additional incurred costs (such as assembly, transport, duties and taxes etc.) and additional costs for assembly or material due to a model-change are not covered. Within the framework of our voluntary guarantee, the Consumer shall bear these costs.

(7) Our guarantee is valid only for the original Consumer who purchased the goods.

For any questions on our Warranty, please reach out to our Support team via our website.





Oracle Red Bull Racing eScooters

www.rbr-escooter.com

Need Assistance?

support@rbr-escooter.com

US: +1 833 631 0071