



Solstice®

INFLATABLE STAND-UP PADDLEBOARD INSTRUCTION MANUAL

GUIDE D'UTILISATION DE LA PLANCHE À PAGAIE GONFLABLE
MANUAL DE INSTRUCCIONES DE TABLA DE PADDLE INFLABLE

**#35596 MAUI, #35125 LANAI,
#34126 BALI 2.0, #34128 TAHITI,
#35132 TONGA, #36132 OCEANIA,
#36134 ISLANDER, #35150 BORA BORA,
#35180 MAORI**

Solstice® by Swimline
International Leisure Products, Inc.
191 Rodeo Drive, Edgewood, NY 11717
Tel: (631) 254-2155 • Fax: (631) 254-2363
www.solsticewatersports.com

INTRODUCTION:

We thank you for your purchase of our SOLSTICE SUP. Please read the following instructions carefully before using this inflatable SUP and keep the instructions for future reference. If you resell the board; please hand this manual over to the buyer. This SOLSTICE inflatable paddle board has been manufactured to the highest quality standards.

FEATURES:

- Versatile design and features
- Easy assembly and maintenance
- Low cost of maintenance and operation
- High quality performance
- Quality certified construction
- Reliable, heavy gauge PVC material
- High pressure drop stitch construction provides superior rigidity
- Easy to store and carry in provided carry bag

This SOLSTICE inflatable SUP manual will provide you with all of the easy instructions you need to follow in order to set up and operate this board efficiently. If this is your first SUP, or you are not familiar with this type of board, please ensure that you obtain lessons and operating experience before paddling.

In addition to set-up instructions and operational guidelines, we have also included several very important Warning and Caution statements that pertain to the safe use and enjoyment of this new SOLSTICE SUP. It is very important that you take the time to read them all. Please make certain that you understand the information contained in this manual prior to initial use.

PLEASE RETAIN THIS MANUAL FOR FUTURE REFERENCE!

Important Safety Guidelines. Please read & understand prior to using SUP.

To enhance the enjoyment of your SUP and protect the safety of the user of the product, **ALWAYS STRICTLY OBSERVE** the following important safety points.

- 1. WARNING:** Board designed for use in sheltered water only.
- 2. WARNING:** This is not a life saving device. Use only under competent supervision. Never allow diving or jumping onto or off of this product. Never leave in or near the water when not in use. Never tow from any vehicle.
- 3. WARNING:** Inflate the product as outlined in **Assembly, point #3**. Use the provided gauge and inflate to approximately 13 to 15 PSI. Do not over inflate. Excessive inflation of the product can cause it to burst or cause damage to the seams. It is crucial that the board's pressure be reduced during prolonged use in direct sun. Also, in cold conditions, the pressure may decrease and more air will need to be added to ensure proper inflation. Use the gauge.
- 4. WARNING:** A certified Personal Flotation Device (PFD) is required for the user. It is especially important that children and non-swimmers wear a Personal Flotation Device at all times. Children and non-swimmers need special instruction in the use of the Personal Flotation Device.
- 5. WARNING:** Do not use your board if you suspect a puncture or leak. It may be unsafe.
- 6. WARNING:** Beware of offshore winds and currents. Optional Ankle Leash is recommended.
- 7. WARNING:** The total number of persons and total weight shall not exceed the information printed on the board. Do not exceed the maximum recommended capacities. Overloading violates regulations and can be dangerous. **Max weights: Bora Bora: 325 LBS, Bali 2.0: 200 LBS, Tonga: 325 LBS Islander: 300 LBS, Tahiti: 200 LBS, Maui: 125 LBS, Oceania: 325 LBS, Maori: 1000 LBS.**

8. **WARNING:** It is the responsibility of the board owner to identify and obey all local and state laws pertaining to safety **PRIOR** to use. Please consult your local authorities to ensure compliance.
9. Do not allow unattended children on the board. Always make sure that at least one responsible adult is supervising all children and those who do not know how to swim **AT ALL TIMES**.
10. Your board is designed to be a store-able, seasonal product. If the board will not be in use year-round, it is **STRONGLY RECOMMENDED** that you deflate it. Dry it thoroughly and store it in a protected area for the off-season. This will help extend your SUP's life and prevent a safety hazard from developing while the board is not in use.
11. **WARNING: Certain household cleaning solvents, chemicals and other liquids (such as battery acid, oil, and gasoline) could damage the PVC fabric. In the event of spill or mishandling, you should check for leaks and inspect for structural integrity. Use a mild soap to clean the board; rinse thoroughly. Do not use MEK, acetone, or other harsh chemicals for cleaning.**
12. Never leave the board in or near water when not in use. Do not use in high surf or rapids.

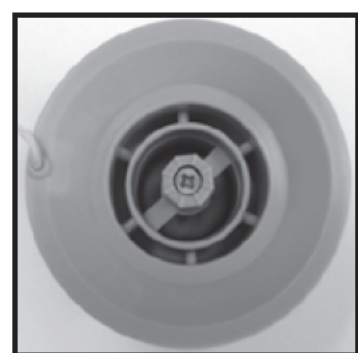
ASSEMBLY:

1. Find a flat area and make sure that the area you have selected to set up the board is completely free of stones, sticks, sharp objects, or other foreign debris.
2. Carefully unfold the SUP, spreading it out to make it as smooth as possible.
CAUTION: DO NOT DRAG THE BOARD ACROSS THE GROUND AS IT MAY TEAR THE BOARD OR CAUSE OTHER DAMAGE. We will not be held responsible for damage caused to the board due to mishandling or failure to follow these instructions.
3. **Inflation:** Unscrew the valve cap (**A3**). Make sure valve pin is in up (locked position - **A2**). Attach the air pump hose nozzle and twist to lock the hose to the valve. As the chamber is inflated, detach the hose and screw in the valve cap.
4. Inflate the board using the provided pump and gauge. Failure to do so will result in an improperly inflated board. *When using the provided pump, it becomes more difficult to inflate as the pressure increases. In order to achieve the proper pressure: Towards the last strokes, stand with your feet on the base of the pump, push down slowly, at the point where you feel the resistance build, then thrust quickly to the end. Use the gauge.* For faster inflation and deflation, use SOLSTICE AC Turbo Electric Pump #19200, Electric Inflator #19000, or 12-volt Inflator #19150, then top off to full pressure with hand pump. Failure to do so will result in an improperly inflated item. Do not use high-pressure air compressors.
WARNING: Do not over inflate. Optimum pressure is between 13 and 15 PSI.

Please see the Safety Valve Diagram A1.



A1



A2



A3

5. **Deflation:** Remove the Valve Cap (**A3**) and push down the deflation button/Pin (**A2**) until it is locked. When the button/pin is down, the air will flow out. If you want to stop deflation, push down the Deflation Button (**A2**) again to allow it to lock in the up position. The deflation will stop when the button pops up. To fully deflate the board for storage, use the deflation feature on your pump (inflator).

SOLSTICE FIN (SKEG) ASSEMBLY:

1. Included with all Paddleboards is a removable fin. The base is pre-attached and the fin is secured in place with a thumb screw. **(A4)**
2. Insert pin-end of the fin into the fin box, and slide aft until fin is completely in the track. **(A5)**
3. Once fin is in place, secure by tightening thumb screw (hand tight). **(A6)**
4. **Note:** Be sure to inspect fin and tighten screw prior to each use.



A4



A5



A6

OPERATING INSTRUCTIONS:

Preparation before departing:

1. Acquire necessary information:
 - A. Get information on local laws, regulation and hazards related to water activities.
 - B. Check weather forecast, local currents, tides, and wind conditions.
 - C. Make a **Float Plan**: Advise someone on land of your plan and expected return time.
 - D. Never go out alone.
 - E. Learn how to determine the distance you can cover, and remember that bad weather conditions can alter this.
2. Check the working condition of the board and equipment:
 - A. Check inflation pressure.
 - B. Check that the load is evenly distributed on deck. Do not overload.
 - C. Check that paddle is properly assembled and functioning.
3. Check that required safety equipment is on board (check the laws and regulations of the country or locality in which you are boating):
 - A. One personal flotation device (PFD) for operator.

DISASSEMBLY:

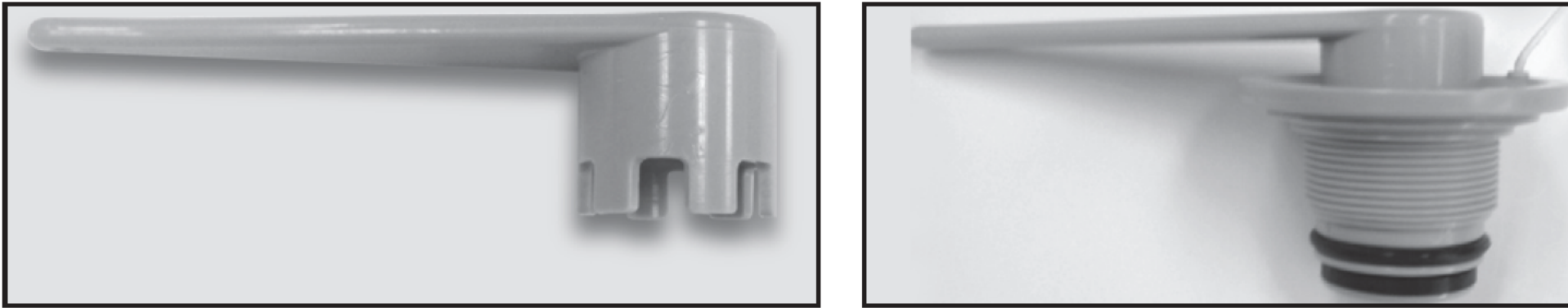
1. Remove the fin.
2. Clean and dry the board as previously instructed.
3. Open the valve and deflate board completely.
4. Roll (not fold) the board. Roll it from the nose to the tail. Place it in the carry bag with the accessories.

TROUBLE SHOOTING:

- If your board appears to have lost air, first check that the valve is tightly shut and not leaking. Use the provided valve wrench (See diagram **A7**). Note: If the temperature has cooled or you have been operating in waters colder than ambient temperature (as stated above); this may cause the pressure to decrease. If either of these has occurred, add air to return the board to nominal pressure.
- If you suspect a leak, visually inspect the board. Some punctures are obvious. If you cannot easily detect any leaks, apply mildly soapy water around the board and valve areas. Any leak will produce bubbles.

REPAIR:

There is a chance the high pressure valve can become loose. To check this, use the supplied valve wrench in the repair kit to tighten the valve. Turn lightly in clockwise direction. (See diagram **A7**)



A7

Small holes and punctures can be repaired with the provided repair kit.

1. Find the leak.
2. Deflate the board.
3. Thoroughly clean and dry the surrounding area of all dirt and grime.
4. Cut a piece of repair material in a round shape larger than the damaged area.
5. Use a pencil to lightly trace the outline of the patch over the area of the hole.
6. Apply adhesive-like clear PVC cement (not included) to the underneath side of the patch and the area to be repaired. Coat both lightly but completely.
7. Put the repair patch on the damaged area and press down firmly.
8. Allow 12 hours to dry. After repair patch has dried, apply glue around the edges of the patch for a complete seal. Allow to dry 4 more hours.

After completing steps 1 through 8, the board is ready to use.

PUMP MAINTENANCE INSTRUCTIONS:

Be sure that the pump is fully lubricated prior to use.

To lubricate, open the top and spread a thin layer of oil or grease on the gasket and tube.

Be sure that the air filter (also located inside top) remains clean.

PARTS INCLUDED:

Paddleboard

High pressure pump with pressure gauge

NOTE: The gauge on this high pressure pump does not register until it reaches 3 PSI

Carry & storage bag

Removable skeg

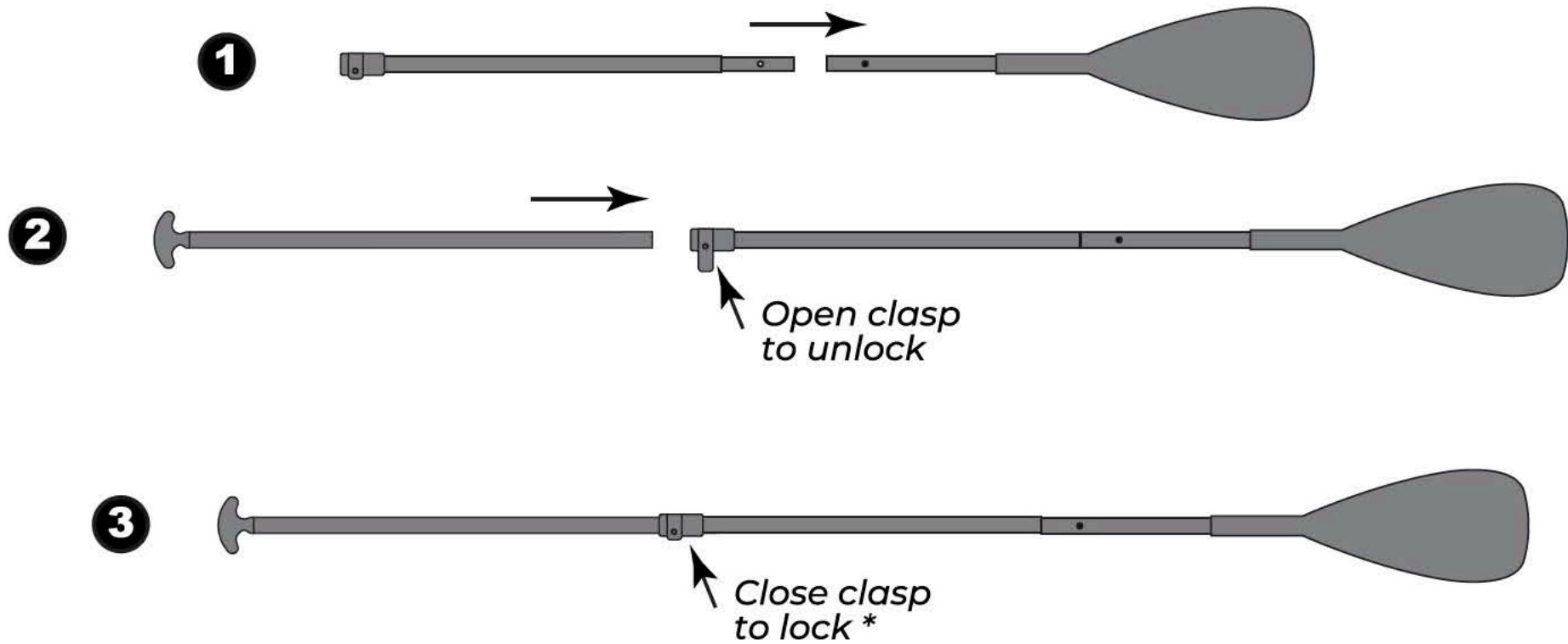
Paddle (for kit models)

Ankle leash (for kit models)

Repair kit

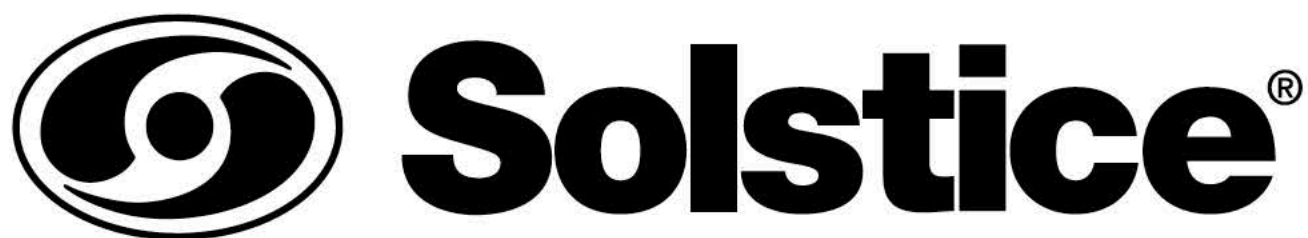
Instruction manual

PADDLE ASSEMBLY



**To tighten locking mechanism, turn clasp clockwise.*

There may be a clear film overlapping the Solstice logo on your paddle handle. This film is intended to protect this area during initial shipment and should be removed at the customer's discretion.



If you have any questions or issues with your Solstice product, do not refer to the retailer. We are the experts and are here to help. Please contact us directly at (631) 254-2155 or support@solsticewatersports.com. Have your product name and model number available.

We will take care of any issue or question directly.