

CEN
RACING

**AMERICAN
FORCE**
★ EDITION ★

F-450 SD

1/10 4WD SOLID AXLE
**CUSTOM
TRUCK**



Instruction Manual



POWERED BY

HOBBYWING

SAVÖX

**FURY
TIRES**





PRECAUTIONS FOR SAFE ENJOYMENT OF YOUR R/C CAR

PRECAUTIONS FOR SAFE ENJOYMENT OF YOUR R/C CAR

For children under the age of 13, parental guidance is recommended when running.

ASSEMBLY PRECAUTIONS

- Do not assemble around small children. The parts can be dangerous if accidentally swallowed.
- Check the contents carefully before assembly. Please contact Customer Support if you happen to notice any defective or missing items.
- You will find the assembly process much easier by carefully reading through the manual, and familiarizing yourself with the instructions.
- Many different tools are required during assembly. For safety purposes, please use suitable tools. Exercise extra caution when using a sharp tool such as a hobby knife.
- Many different materials are used for the parts. Use extra care when handling parts with sharp edges, such as machined metal parts.
- When cutting plastic parts, watch for any flying parts.
- Try to assemble any rotating parts or drivetrain parts as smooth as possible.
- Bundle wires neatly away from the ground or any moving drivetrain components. Make sure that all wires are properly connected to prevent shorting.
- Unnecessary modifications may be unsafe and hinder performance.

PRECAUTIONS BEFORE RUNNING

● R/C cars some models may exceed speeds of 40km per hour. Practice common sense and run the car in open safe places, or R/C car tracks.

● Do not run the car on public roads with high amounts of traffic, or in areas that may cause an inconvenience to people in that area.

● R/C cars are controlled using a radio frequency. In a worst-case scenario,

Radio interferences may cause loss of control.

● If others near you are running R/C cars, confirm that they are not running on the same frequency.

● R/C cars do not like water. Avoid running on rainy days, or areas with water puddles. Exposure of the electronics to water may cause loss of control or damage to the electronics.

● The drivetrain of an R/C car consists of many moving parts like gears, shafts, and tires. Avoid touching these areas when the battery is connected.

● Many parts of an R/C car will become hot after running. Allow the parts to sufficiently cool before conducting any maintenance.

BEGINNING A RUN

1. Place the R/C car on a stand so the wheels are off the ground.

2. Confirm that the speed controller switch is OFF, and connect the motor and battery.

3. Extend the transmitter antenna and turn the switch ON. (It is unsafe to use a transmitter with low voltage. Make sure that the transmitter batteries are good before running)

4. Turn the speed controller switch ON.

FINISHING A RUN

1. Turn the speed controller switch OFF.

2. Disconnect the battery.

3. Turn the transmitter switch OFF, and retract the antenna.

BATTERY USAGE

(Carefully read the instruction included with the batteries.)

● When charging batteries, make sure that the surrounding area is void of anything highly flammable. Also avoid charging in high-temperature locations.

● When charging batteries, frequently monitor the charging it catch on fire.

If the battery reaches 50 degrees Celsius or more, stop charging.

● Batteries will become hot after running. Continuous use of the battery pack may result in damage to the cells. Allow the battery too cool down before re-charging. Using a battery conditioner after running may prolong the life and performance of the battery.

● Please do not discard old battery packs in the trash. Although inconvenient, please locate a battery disposal center.

MOTOR USAGE

(Carefully read the instruction included with the motor.)

● Connecting a 7.2V battery directly to the motor can be very dangerous.

● Choose a gear ratio that matches the power characteristics of the motor.

Using a gear ratio unsuited to the characteristics of the motor will not only prevent the motor from performing at its optimum, but may even cause damage to the other electronics.

● Motors will generally become very hot after running. Continuous running will reduce the life of the motor. Allow the motor to sufficiently cool between each run.

Tools Rquired



1.5mm



2.0mm



2.5mm

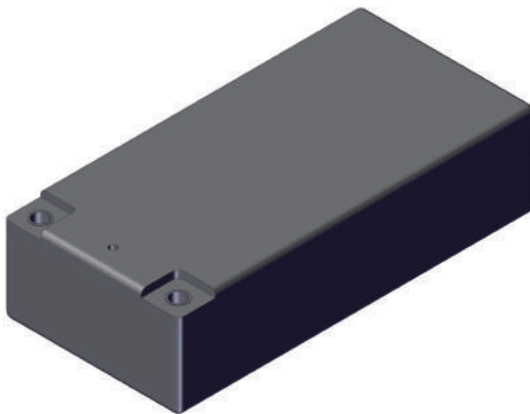


Socket Wrench

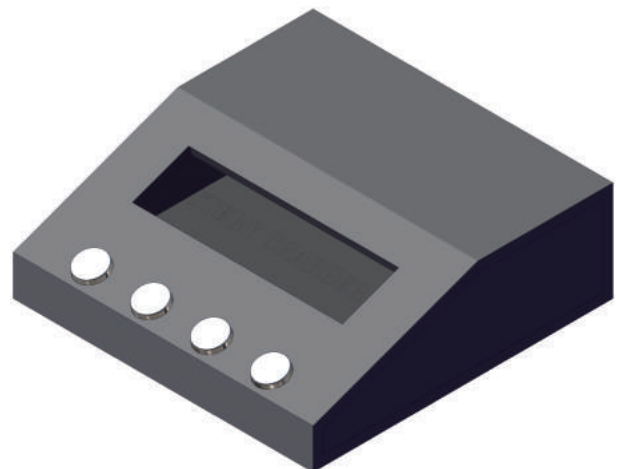


Phillips Screwdriver
(Not included)

Equipment Required



Battery
(Not included)



Battery Charger
(Not included)



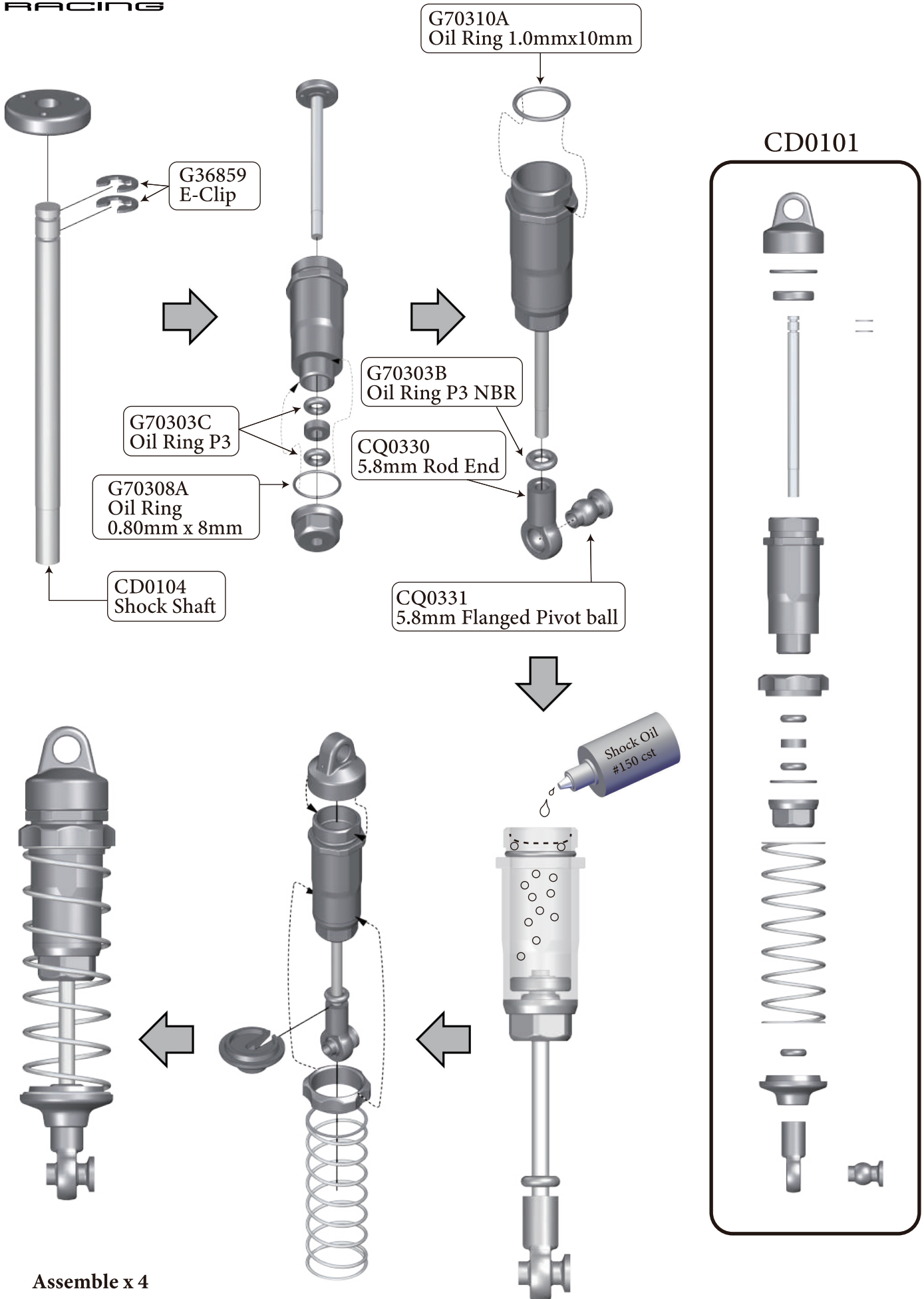
Gears Grease
(Not included)



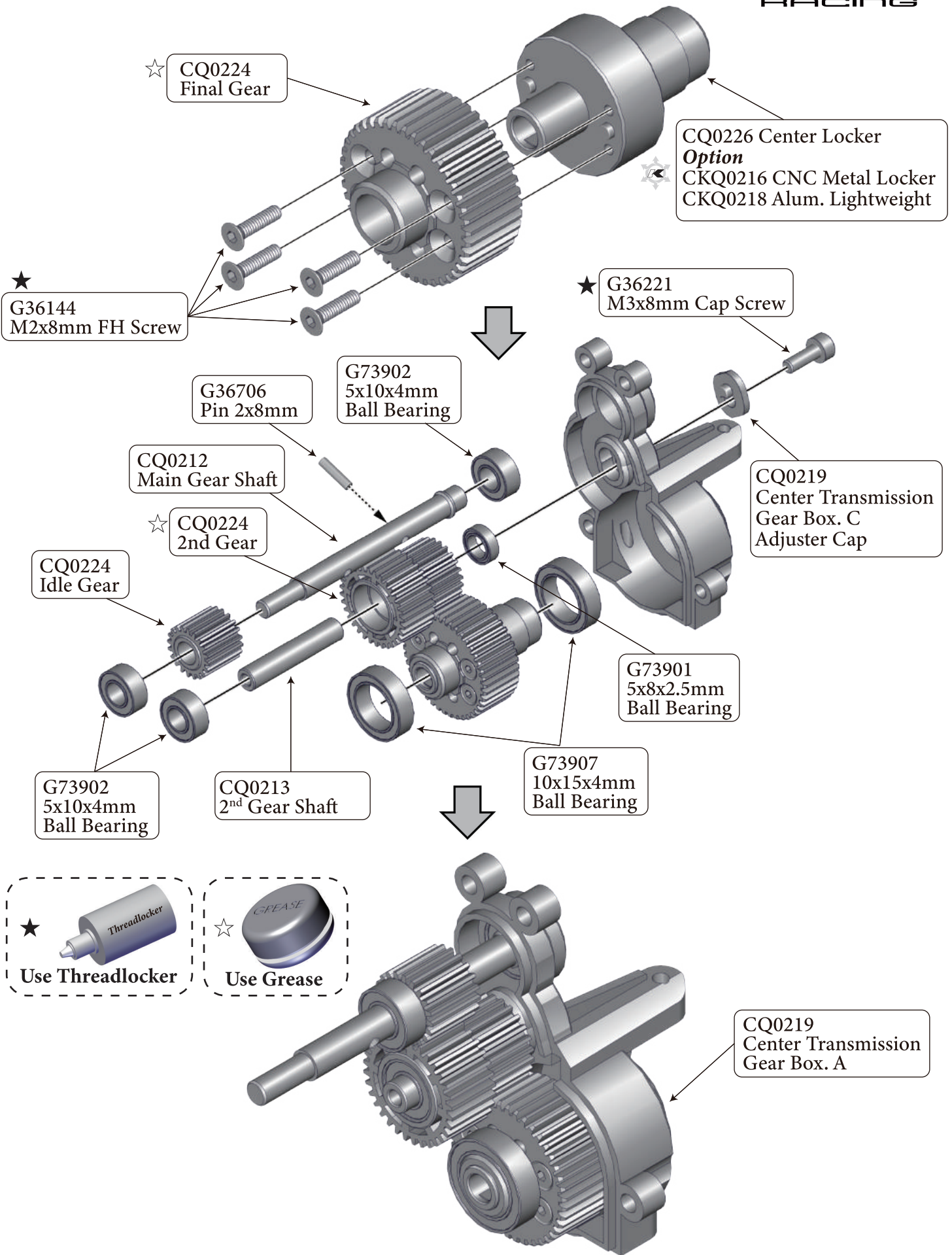
Silicon Oil
(Not included)

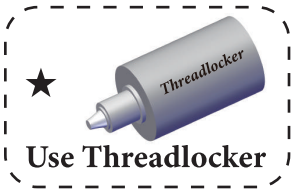


Threadlocker
(Not included)



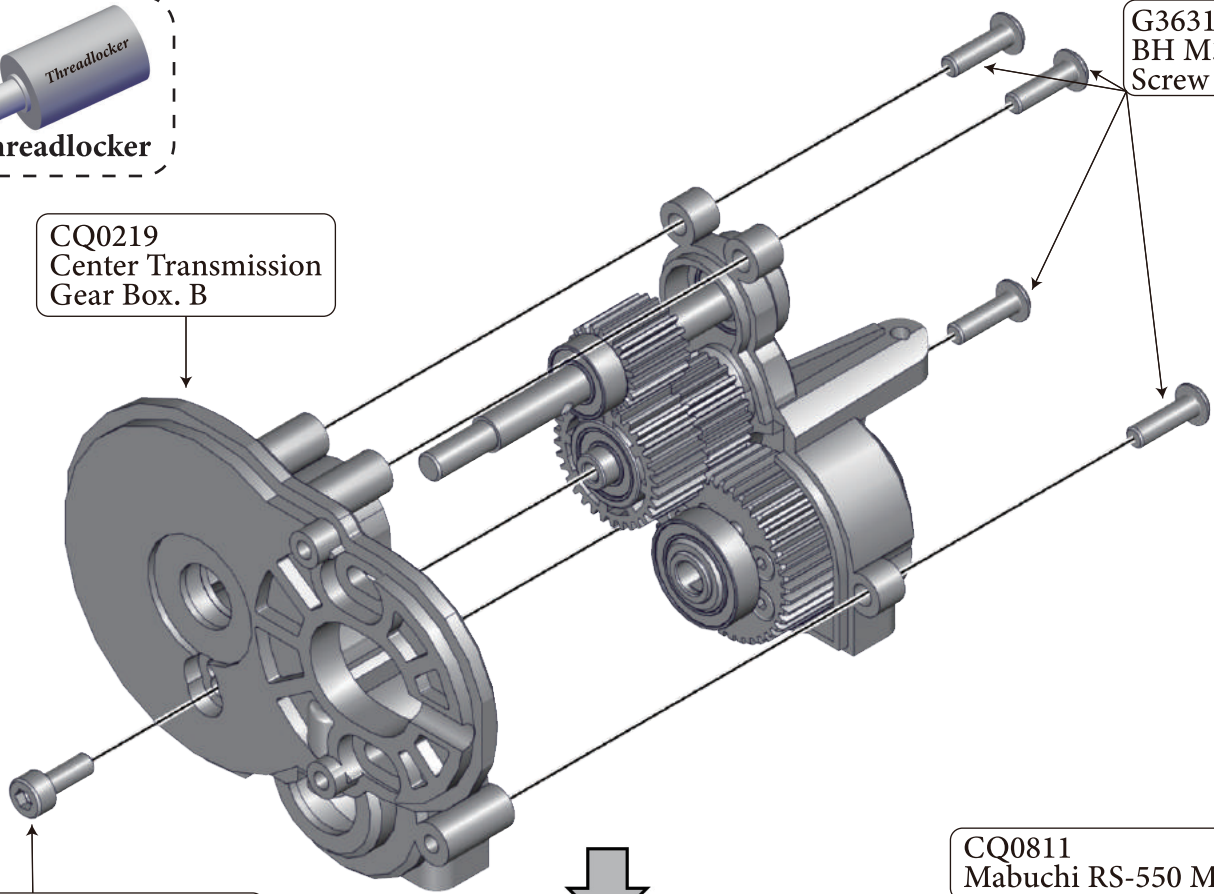
Center Gear Box Assembly





CQ0219
Center Transmission
Gear Box. B

G36311A
BH M3x10mm
Screw



★ G36221
M3x8mm Cap Screw

CQ0811
Mabuchi RS-550 Motor

G36372
BH M3x6mm Screw

★ G36311A
BH M3x10mm Screw

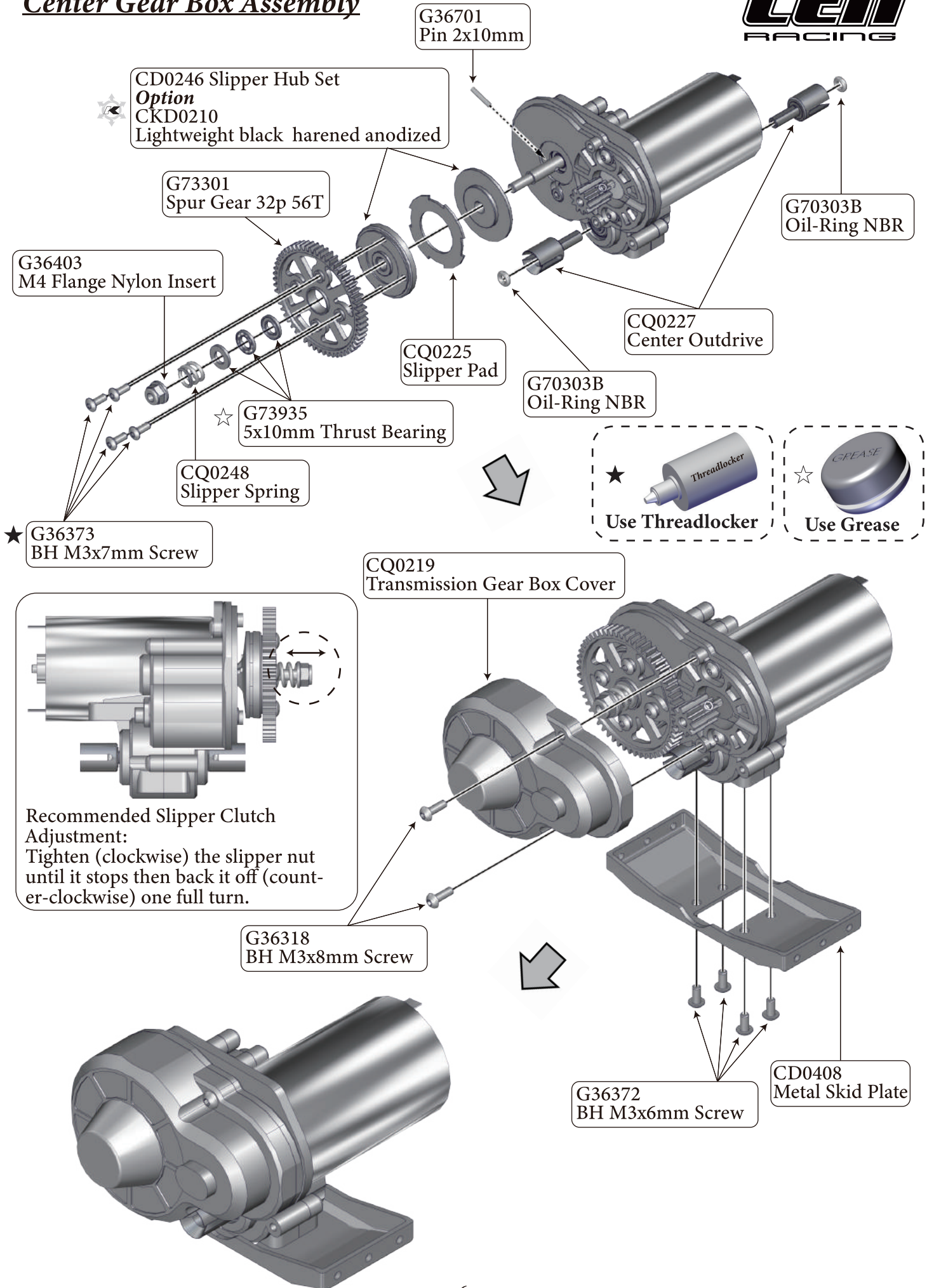
CD0209
Motor Plate

★ G36260
M4x3mm Set Screw

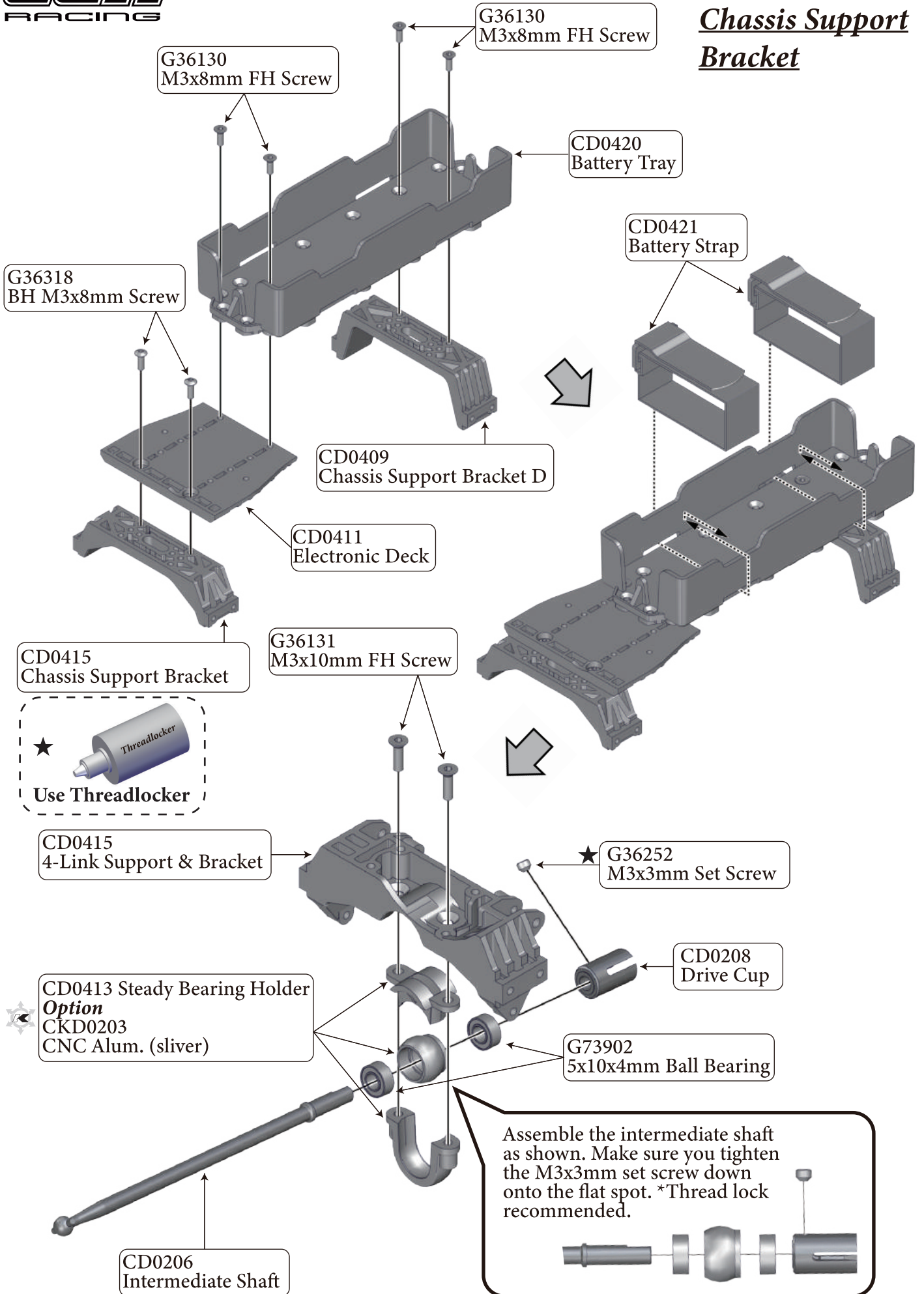
G73201
Pinion Gear 32p 10T

G36884
Washer W3x7x0.50mm

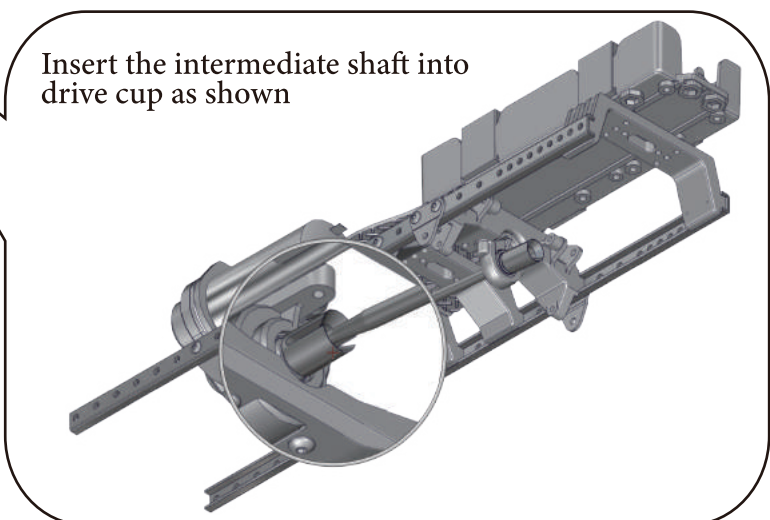
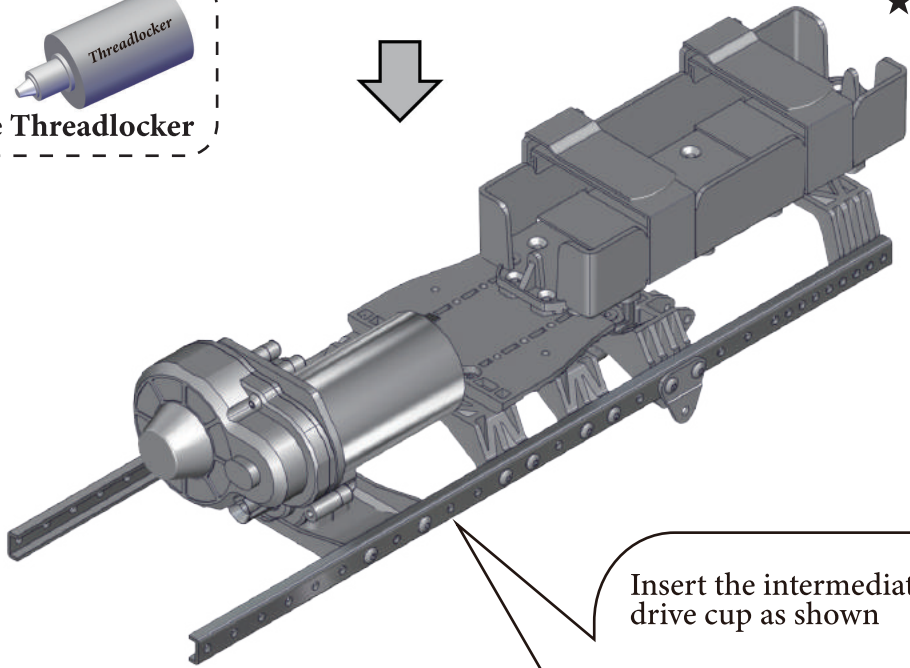
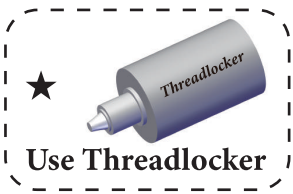
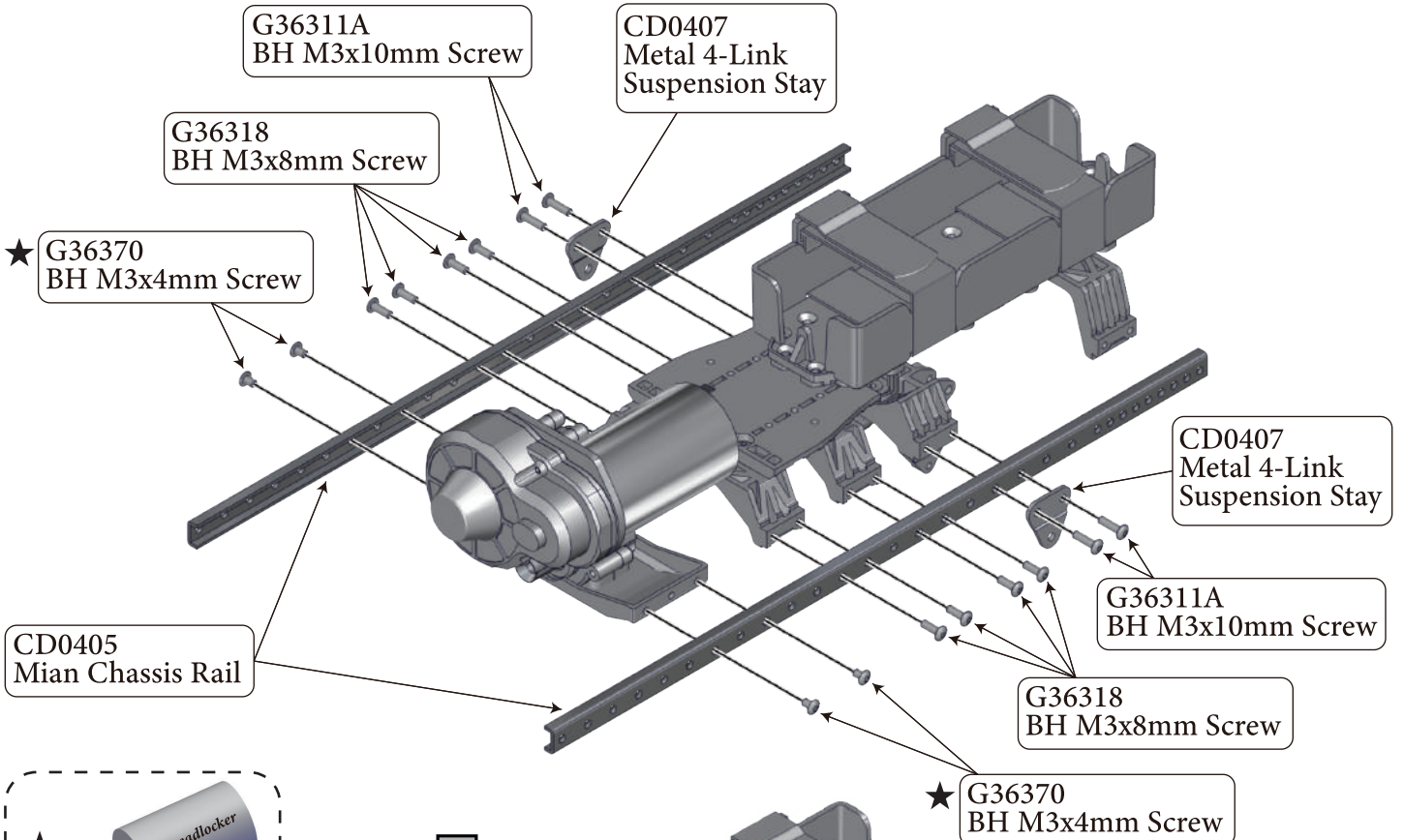
Center Gear Box Assembly

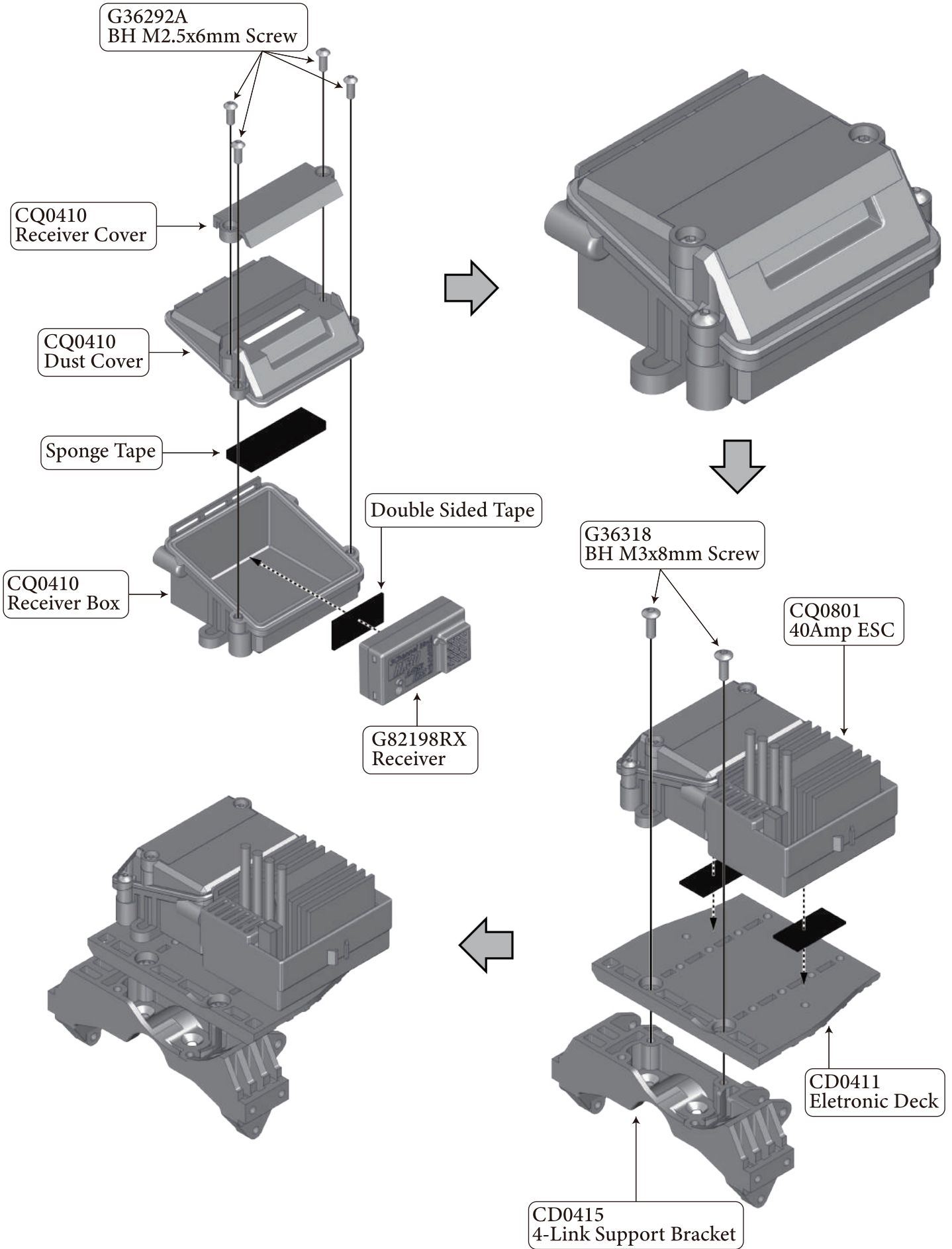


Battery Tray & Chassis Support Bracket

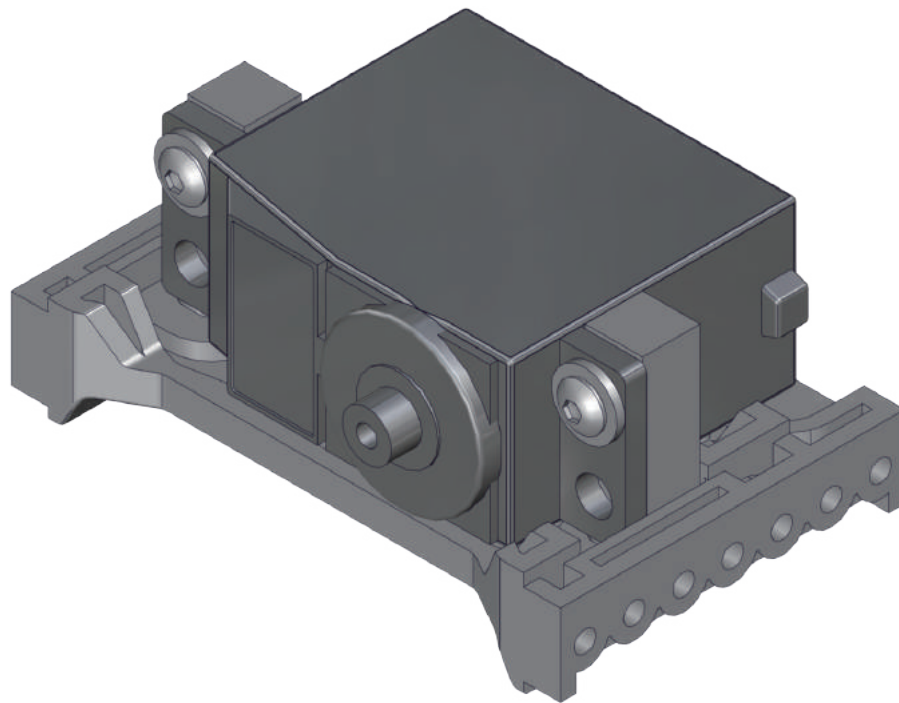
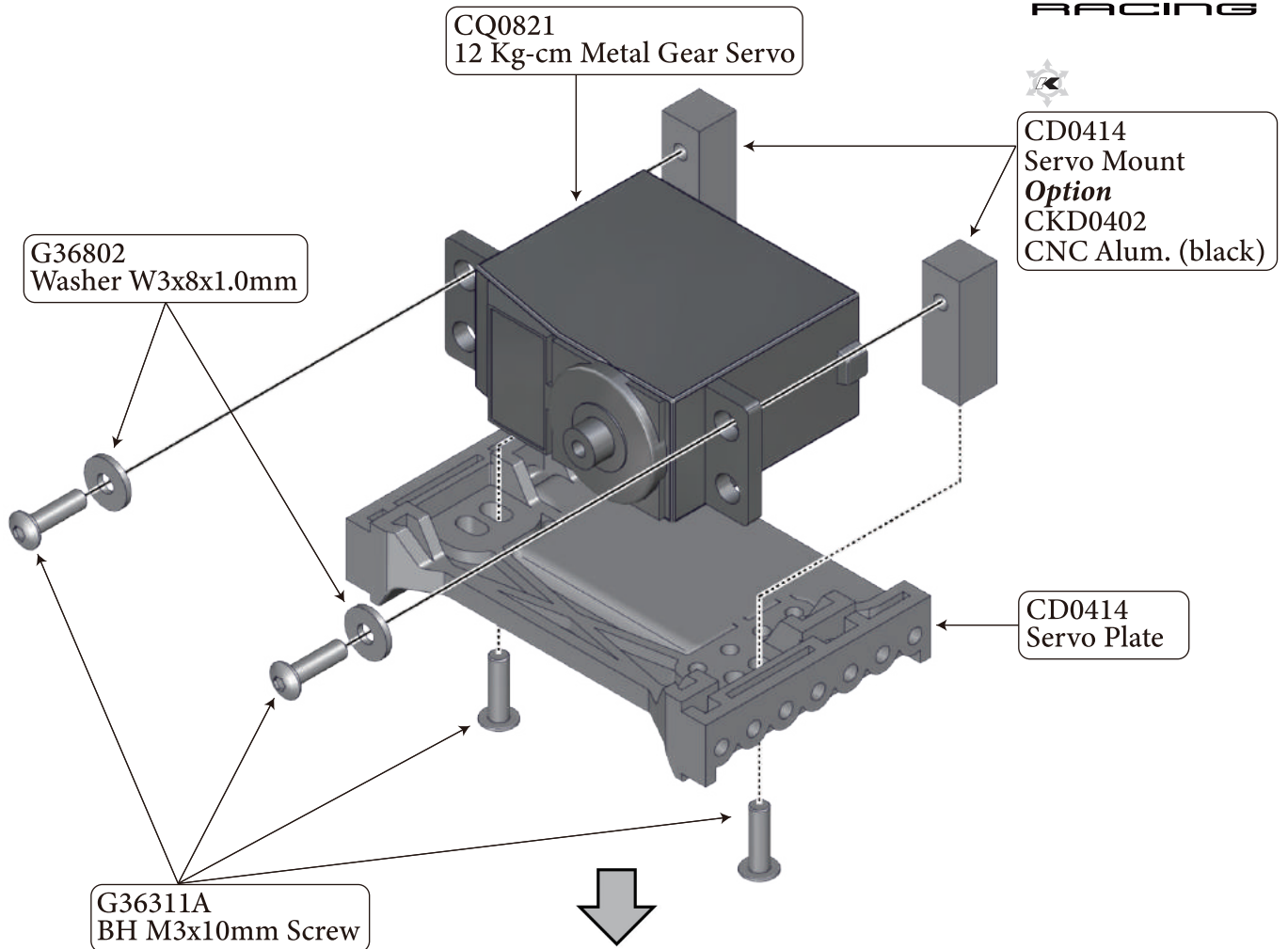


Main Chassis Rail

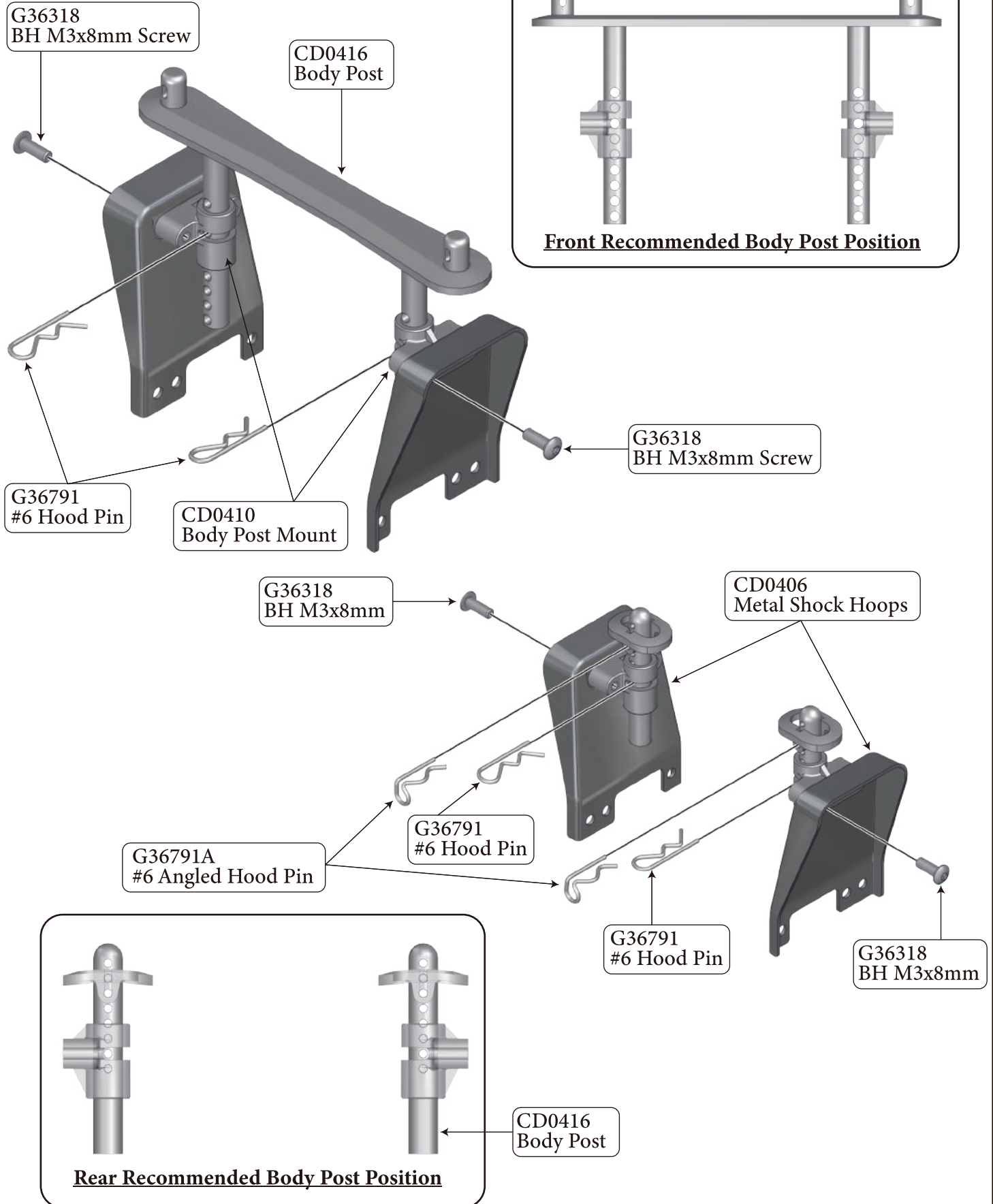




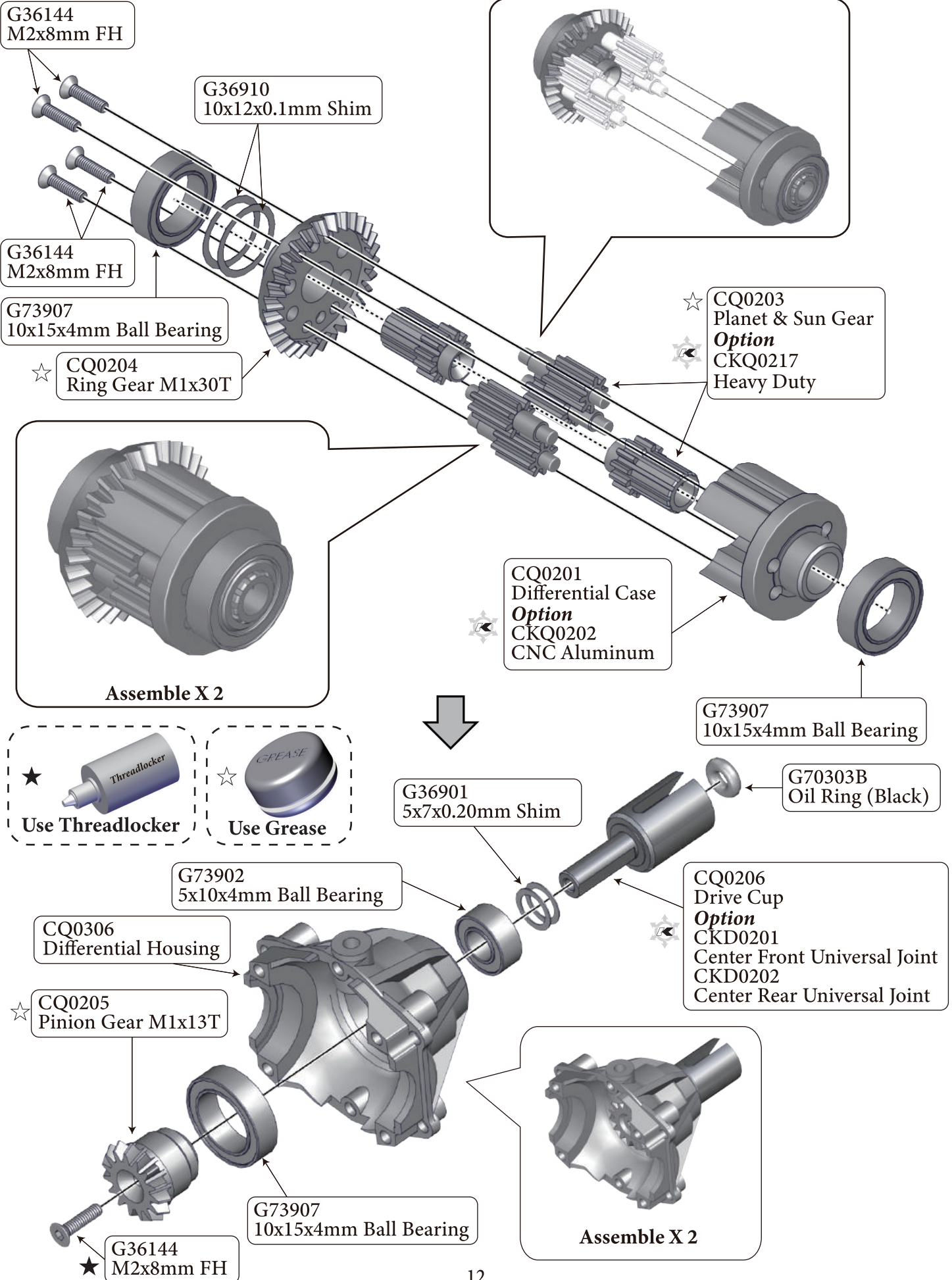
Servo Deck



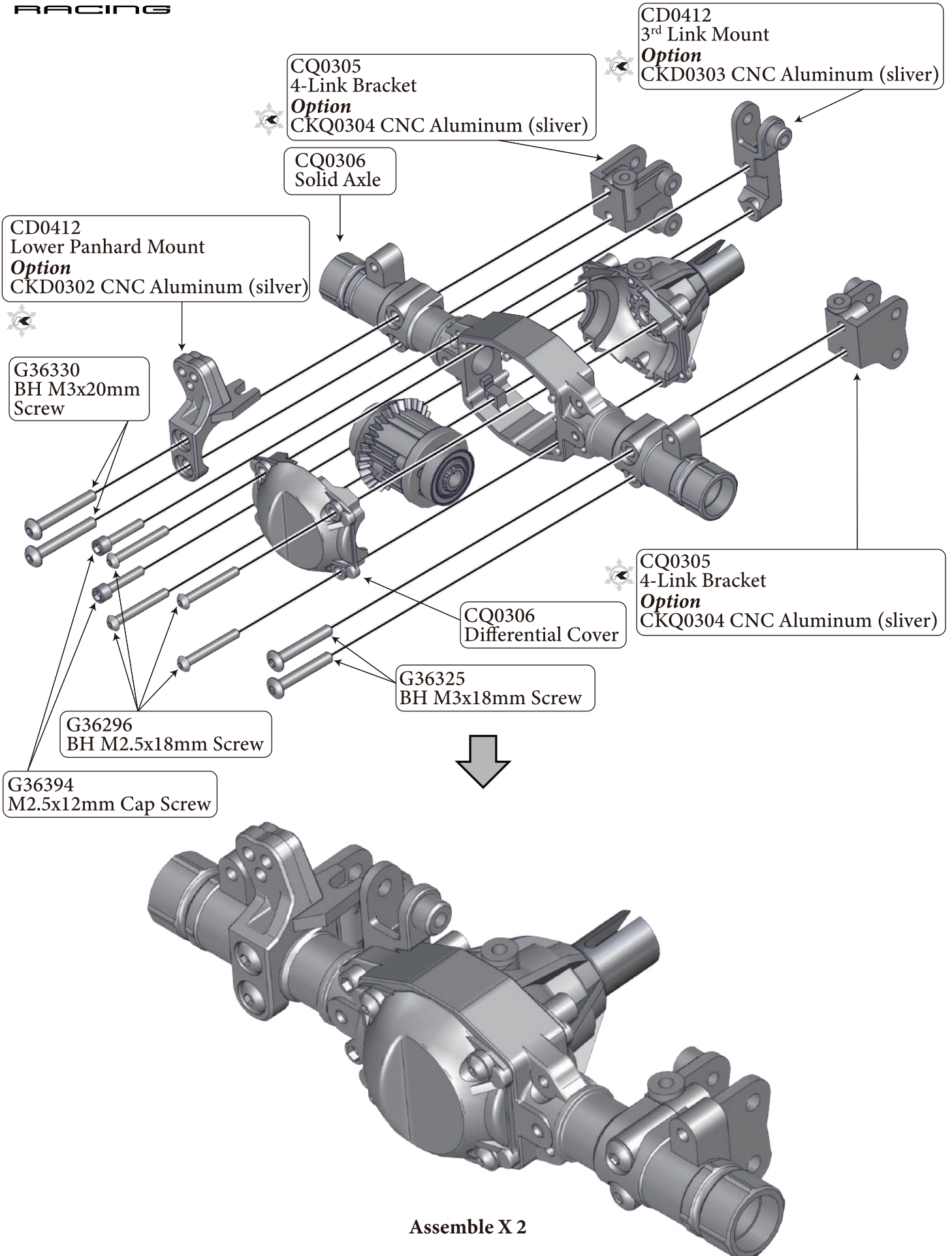
Front & Rear Shock Hoops



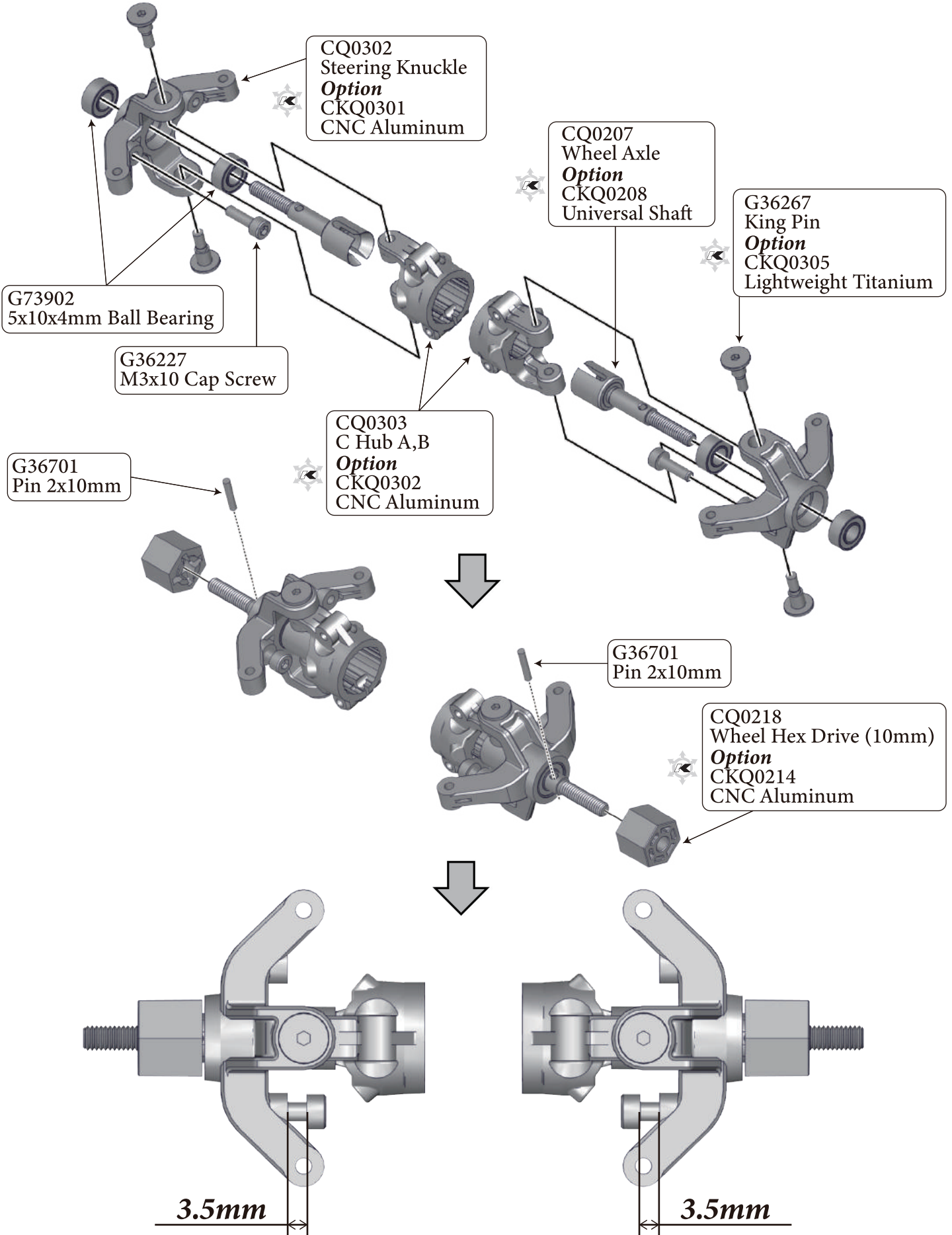
Front & Rear Differential

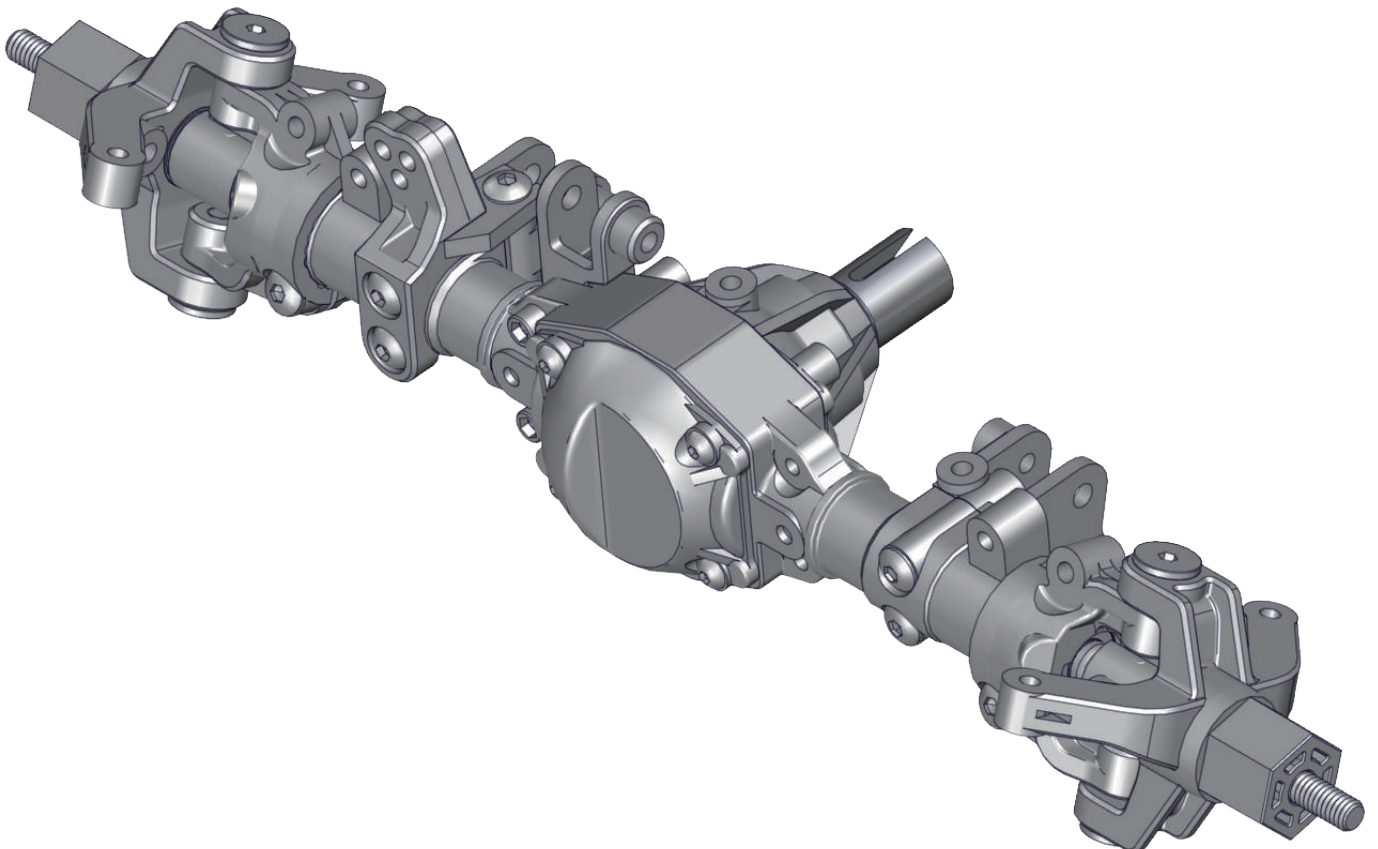
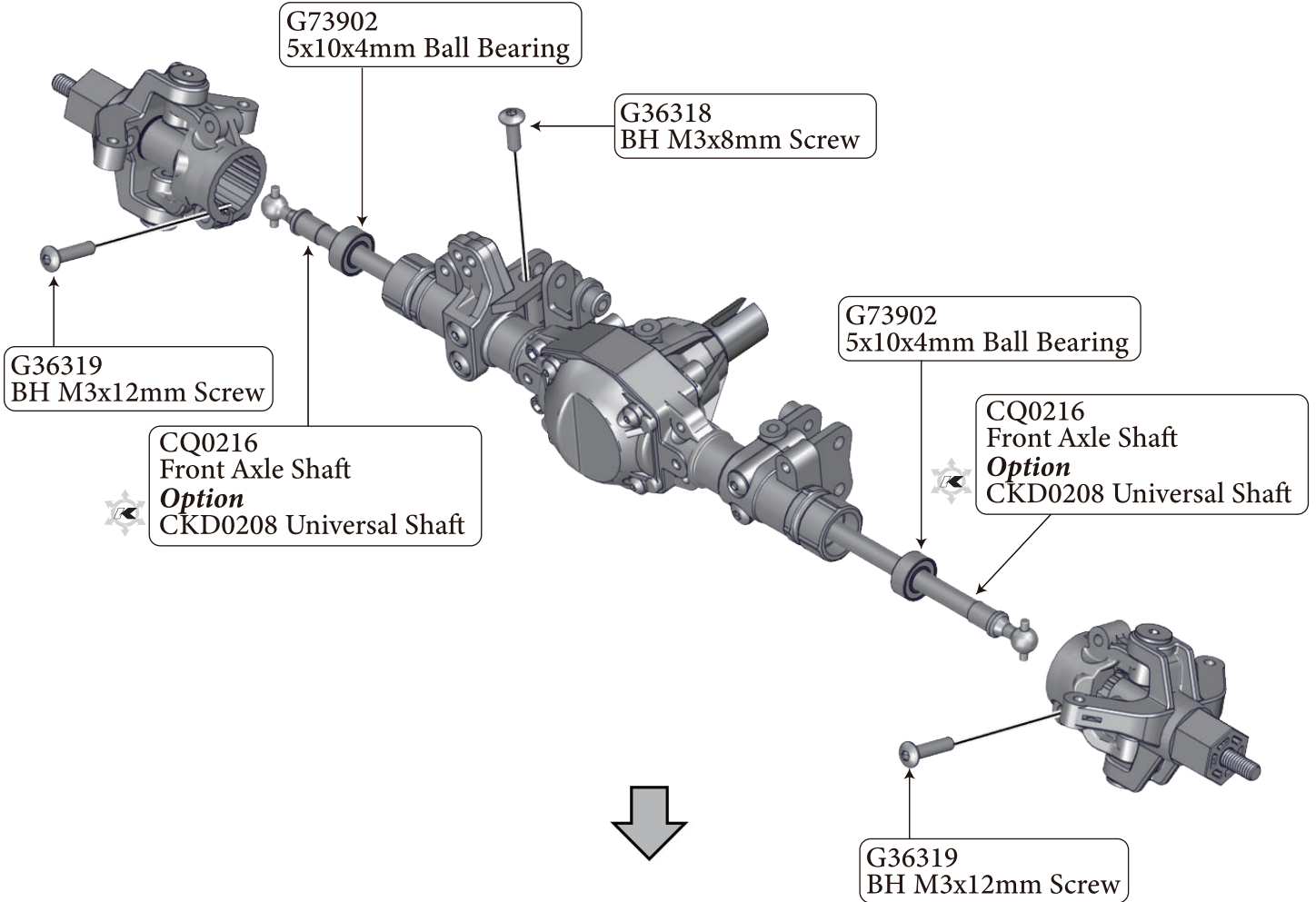


Front & Rear End Assembly

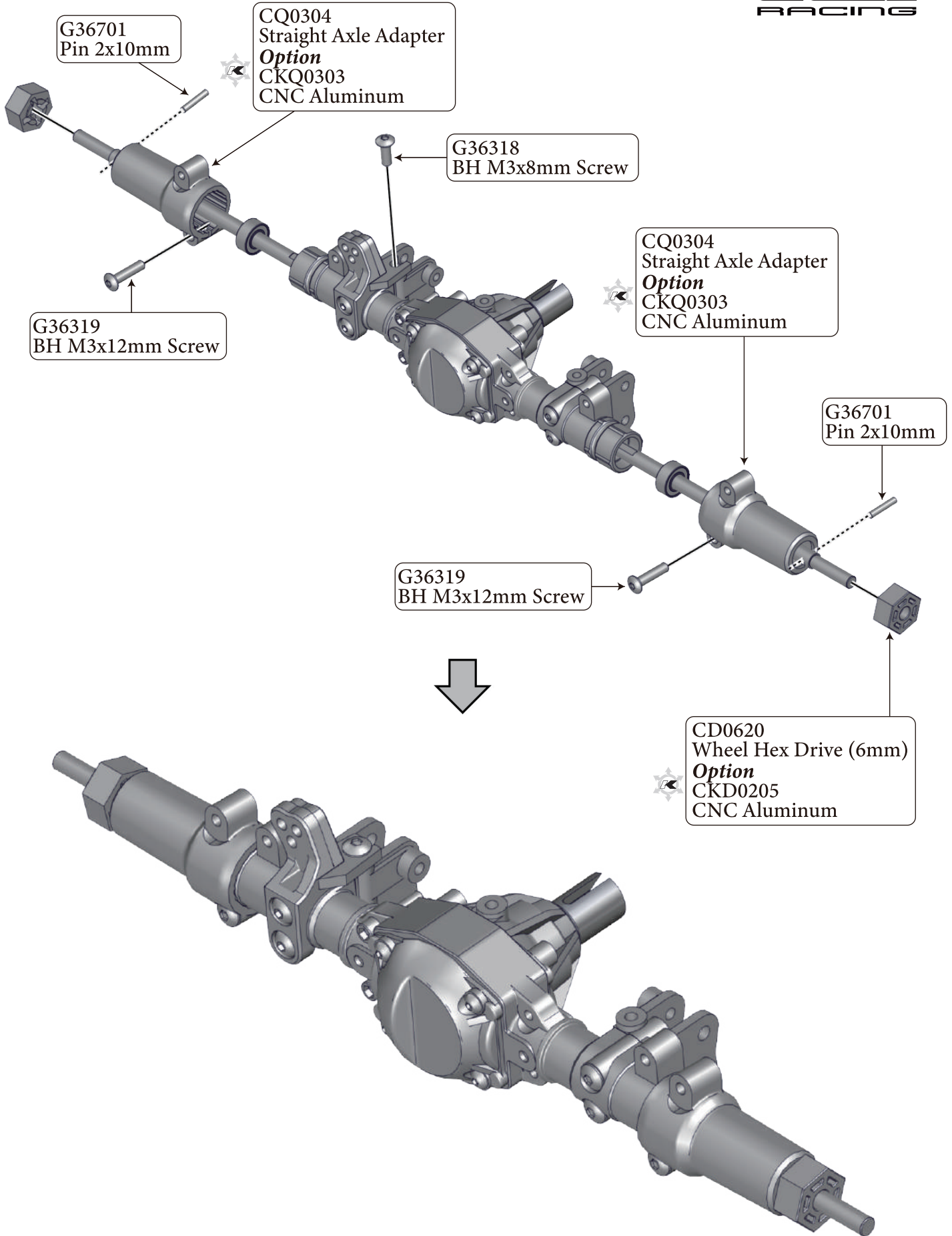


Front Steering Knuckle and C Hub Assembly





Rear End Assembly



Steering Linkage

CQ0331
5.8mm Flanged Pivot Ball
Option
CKQ0325 Metal

CQ0330
Rod End

★
G36256
M3x16mm Set Screw

CD0301
M3x57mm Alum.Link

★
G36256
M3x16mm Set Screw

CQ0330
Rod End

Panhard Bar

Rear Sway Bar Linkage

CQ0333
Rod End

G36255
M3x12mm Set Screw

CQ0333
Rod End

Rear Left

Rear Right

Front

CQ0334
5.8mm Bent Angled
Rod End

Steering Drag Link Assemble x1

Rear Suspension Linkage Assemble x3

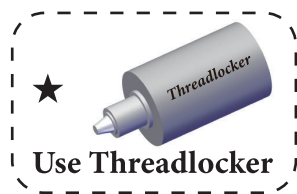
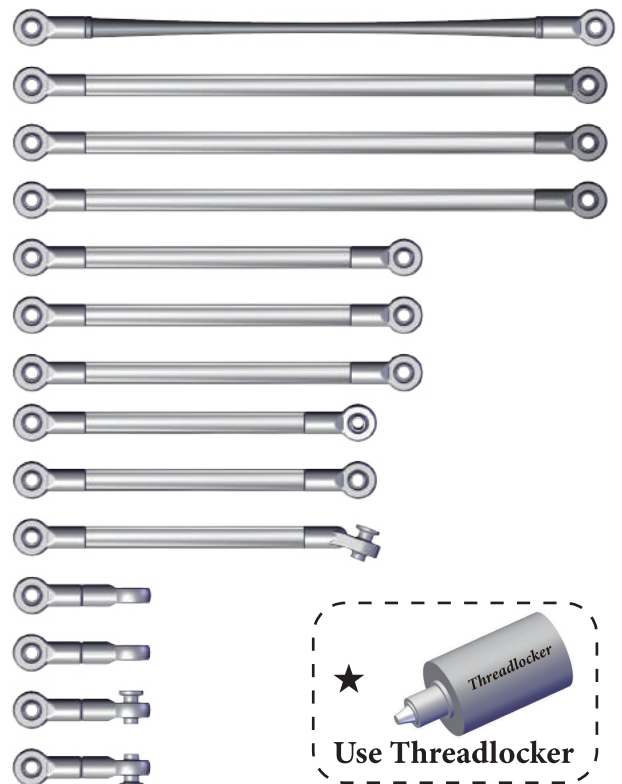
Front Suspension Linkage Assemble x3

Panhard Bar Assemble x2

Steering Linkage Assemble x1

Front Sway Bar Linkage Assemble x2

Rear Sway Bar Linkage Assemble x2

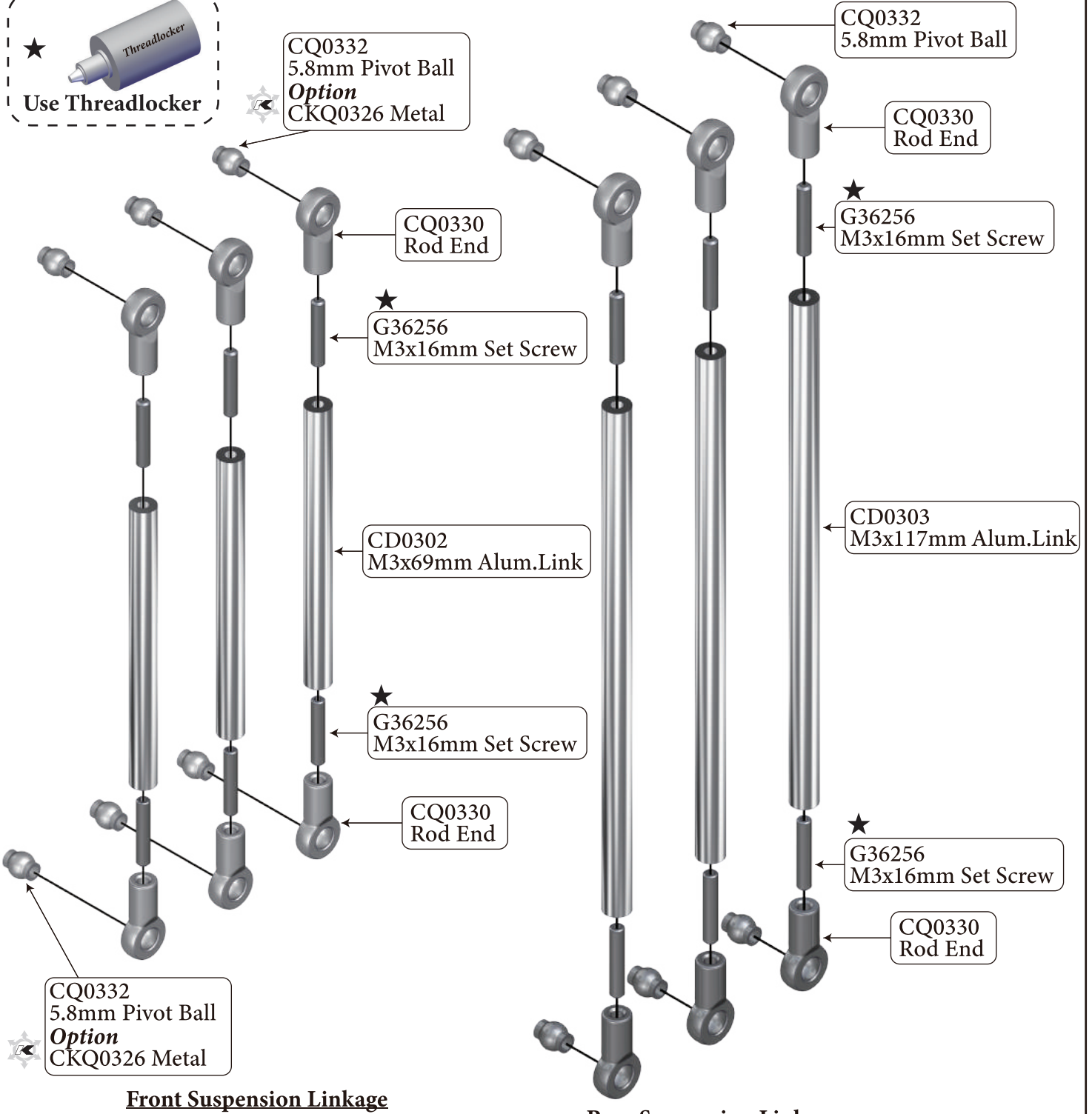
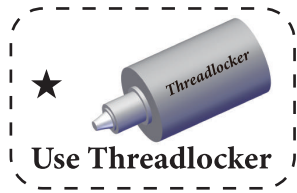
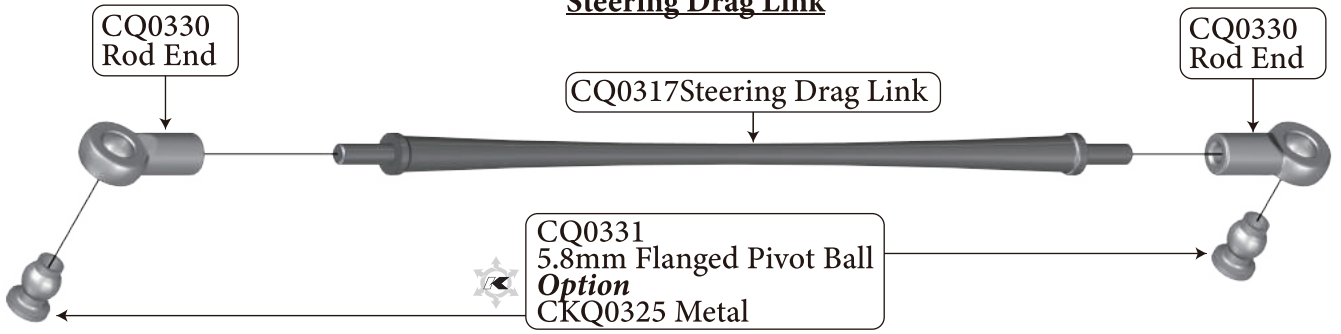


Suspension & Steering Linkage Assembly

continue...



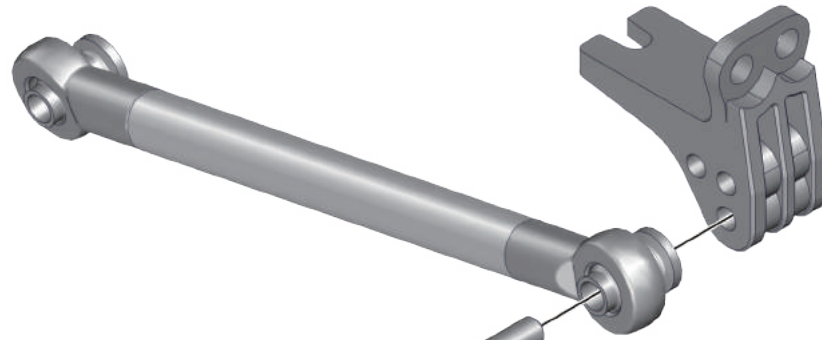
Steering Drag Link



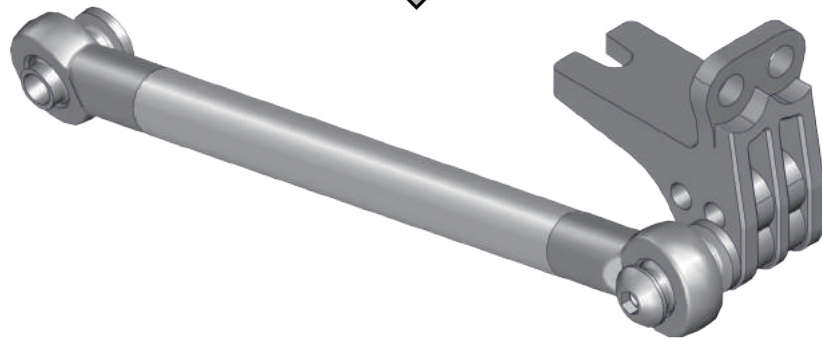
Front Suspension Linkage

Rear Suspension Linkage

Upper Panhard Mount Assemble x2



G36313
BH M3x16mm Screw

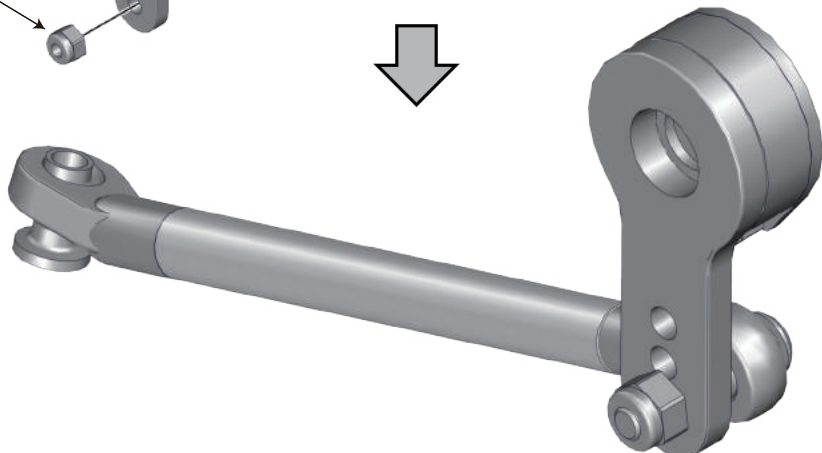


CQ0417
Servo Saver
Option
CKD0401 Servo Horn

G36401
M3 Nylon Insert Locknut

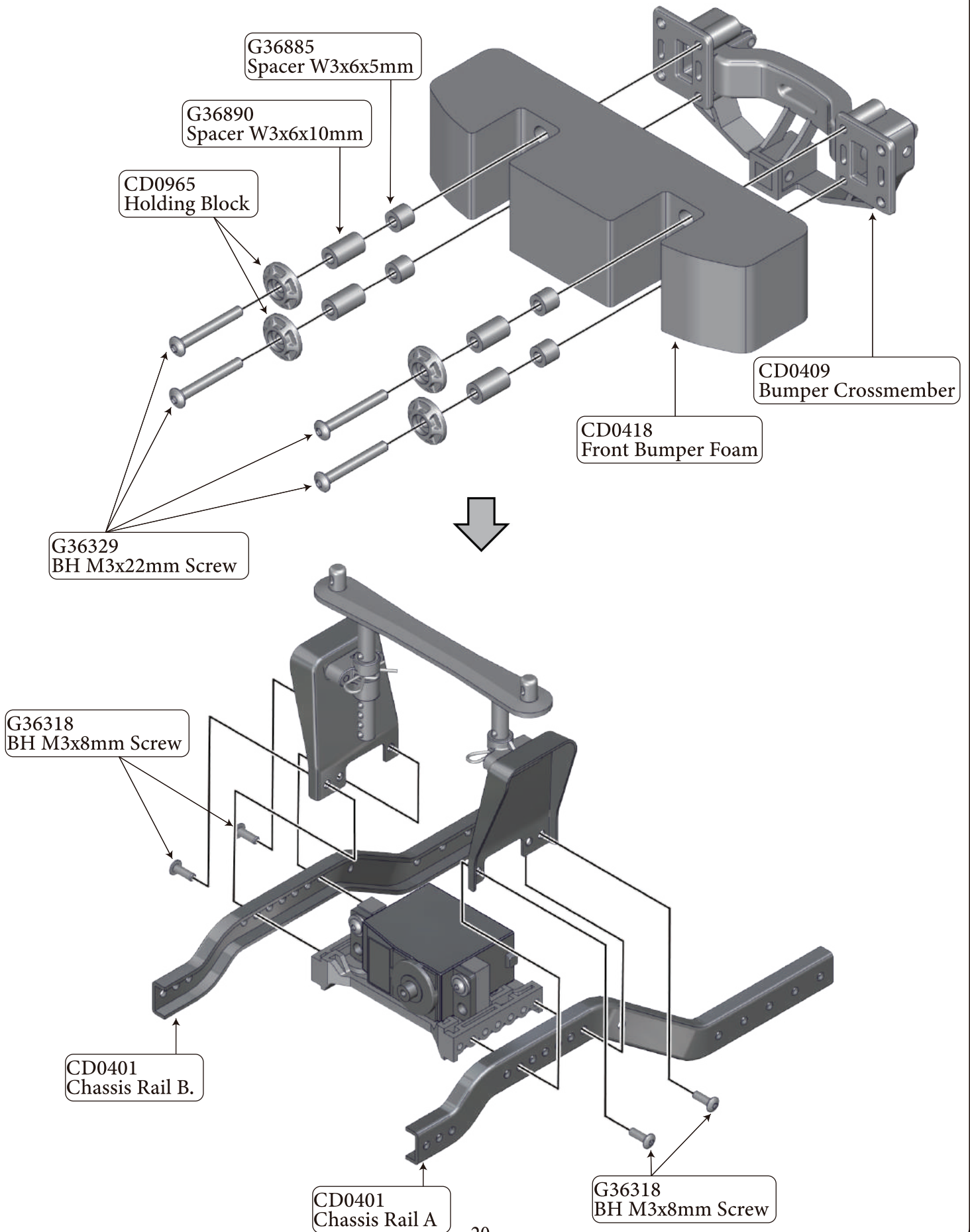
G36268
Servo Saver Spring

G36313
BH M3x16mm Screw

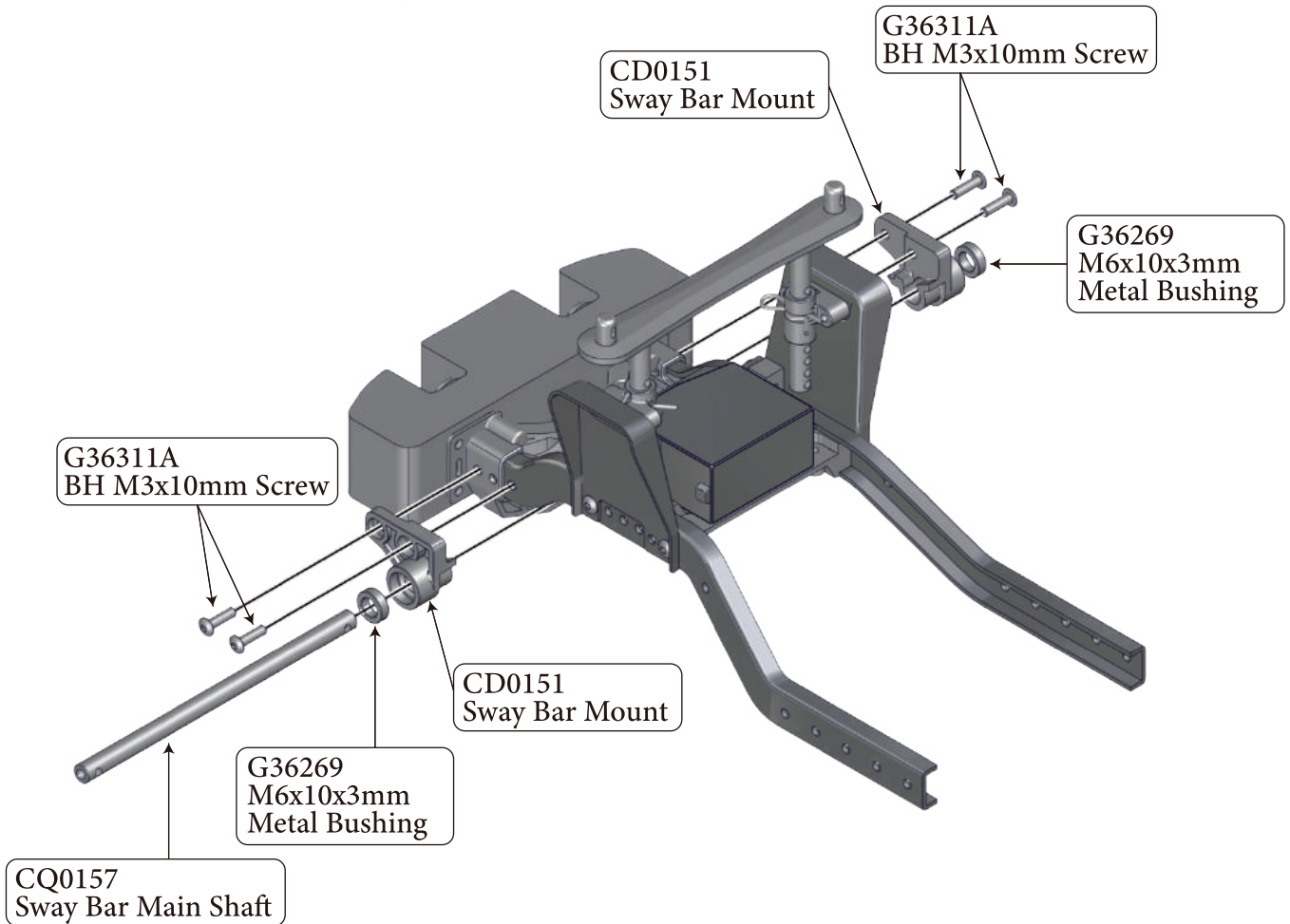
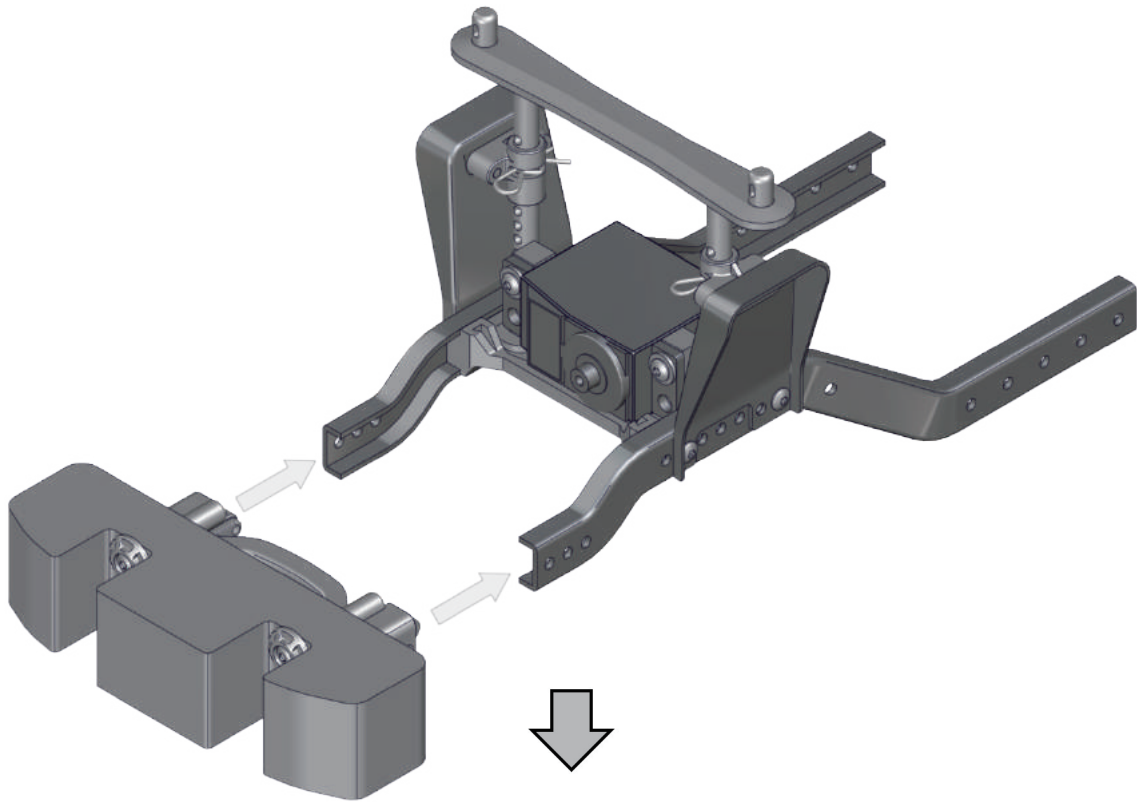


Servo Horn Steering Linkage Assembly

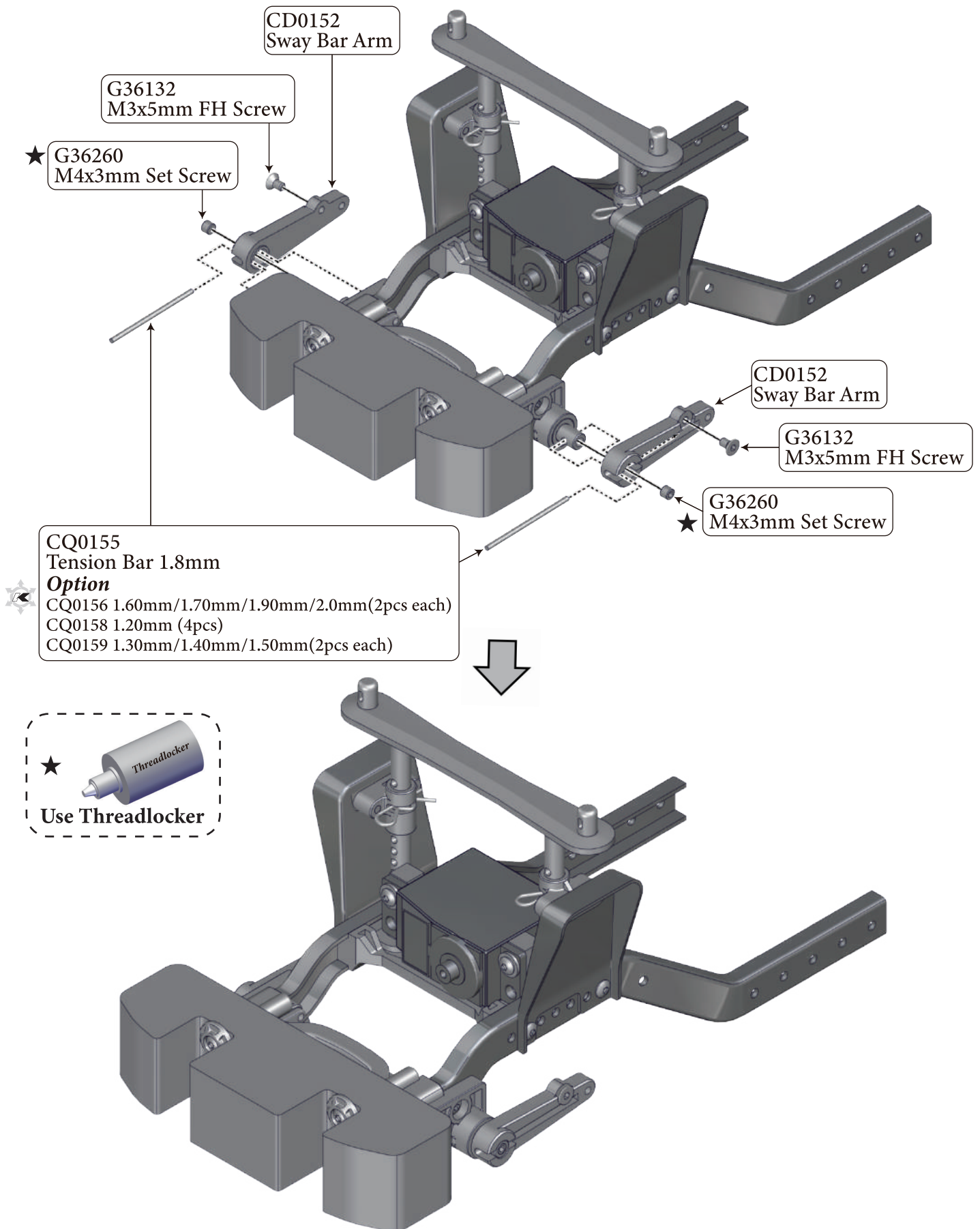
Front Bumper & Chassis Rail Assembly



Front Bumper & Chassis Rail Assembly
continue...



Front Bumper & Chassis Rail Assembly End



Rear Bumper & Chassis Rail Assembly
continue...

G36318
BH M3x8mm Screw

CD0409
Bumper Crossmember

CD0401
Chassis Rail

CD0411
Batter Deck

G36311A
BH M3x10mm Screw

CD0401
Chassis Rail

G36318
BH M3x8mm Screw

G36269
M6x10x3mm
Metal Bushing

CD0151
Sway Bar Mount

G36311A
BH M3x10mm Screw

G36269
M6x10x3mm
Metal Bushing

CD0151
Sway Bar Mount

CQ0157
Sway Bar Main Shaft

Rear Bumper & Chassis Rail Assembly



End

G36132
M3x5mm FH Screw

★
G36260
M4x3mm Set Screw

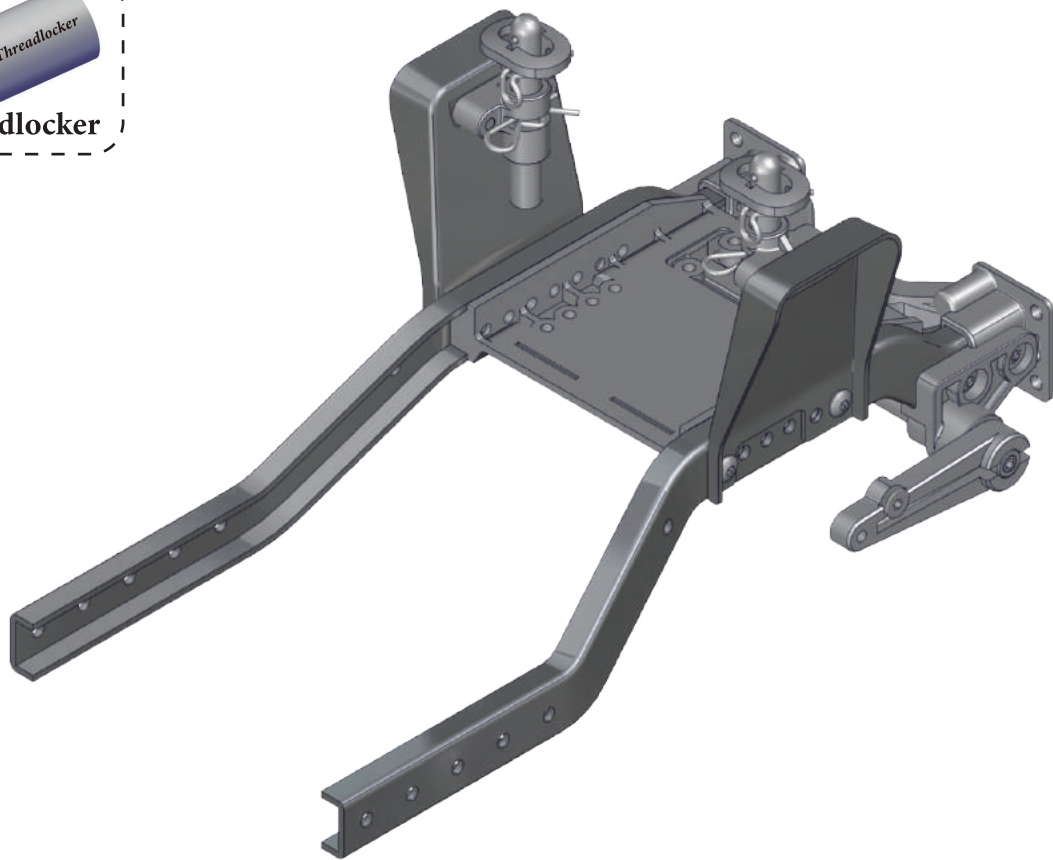
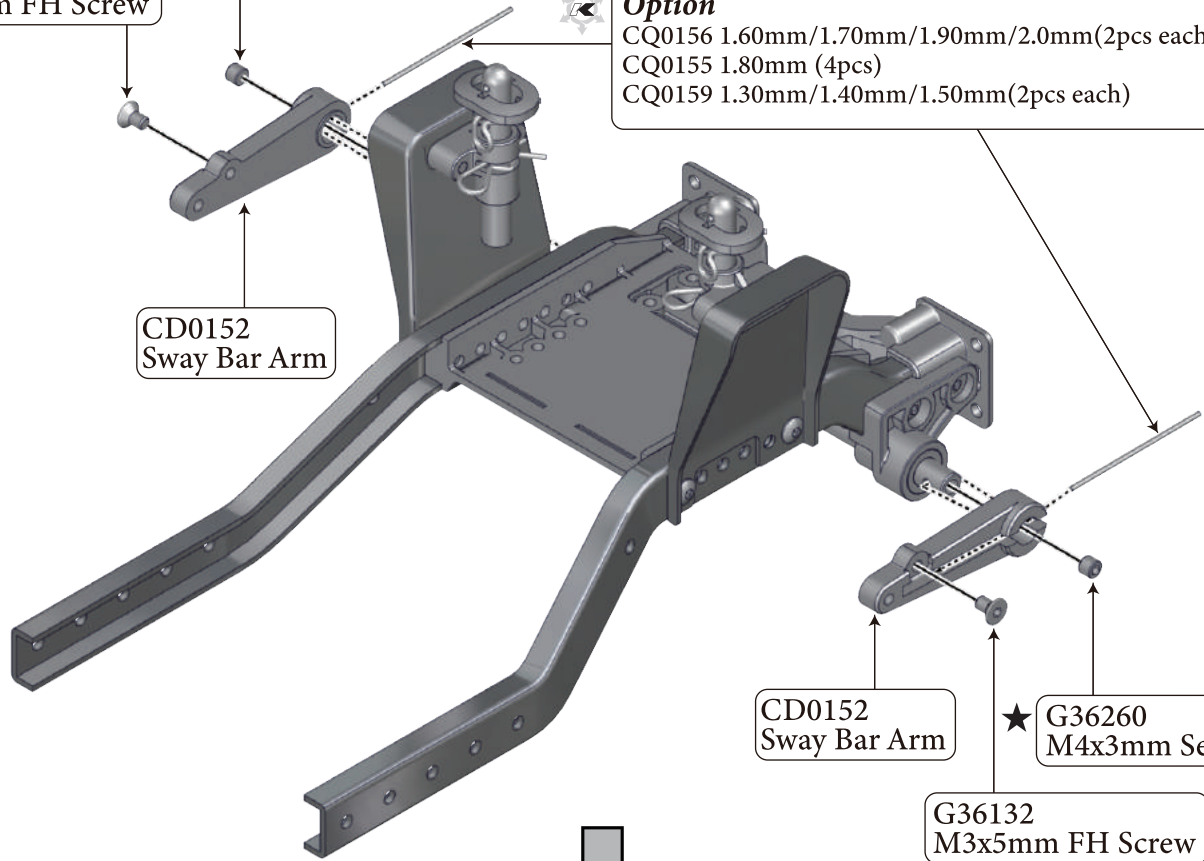
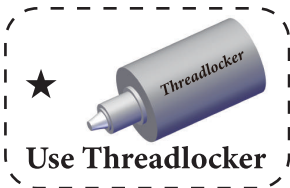
CQ0158
Tension Bar 1.2mm
Option
CQ0156 1.60mm/1.70mm/1.90mm/2.0mm(2pcs each)
CQ0155 1.80mm (4pcs)
CQ0159 1.30mm/1.40mm/1.50mm(2pcs each)

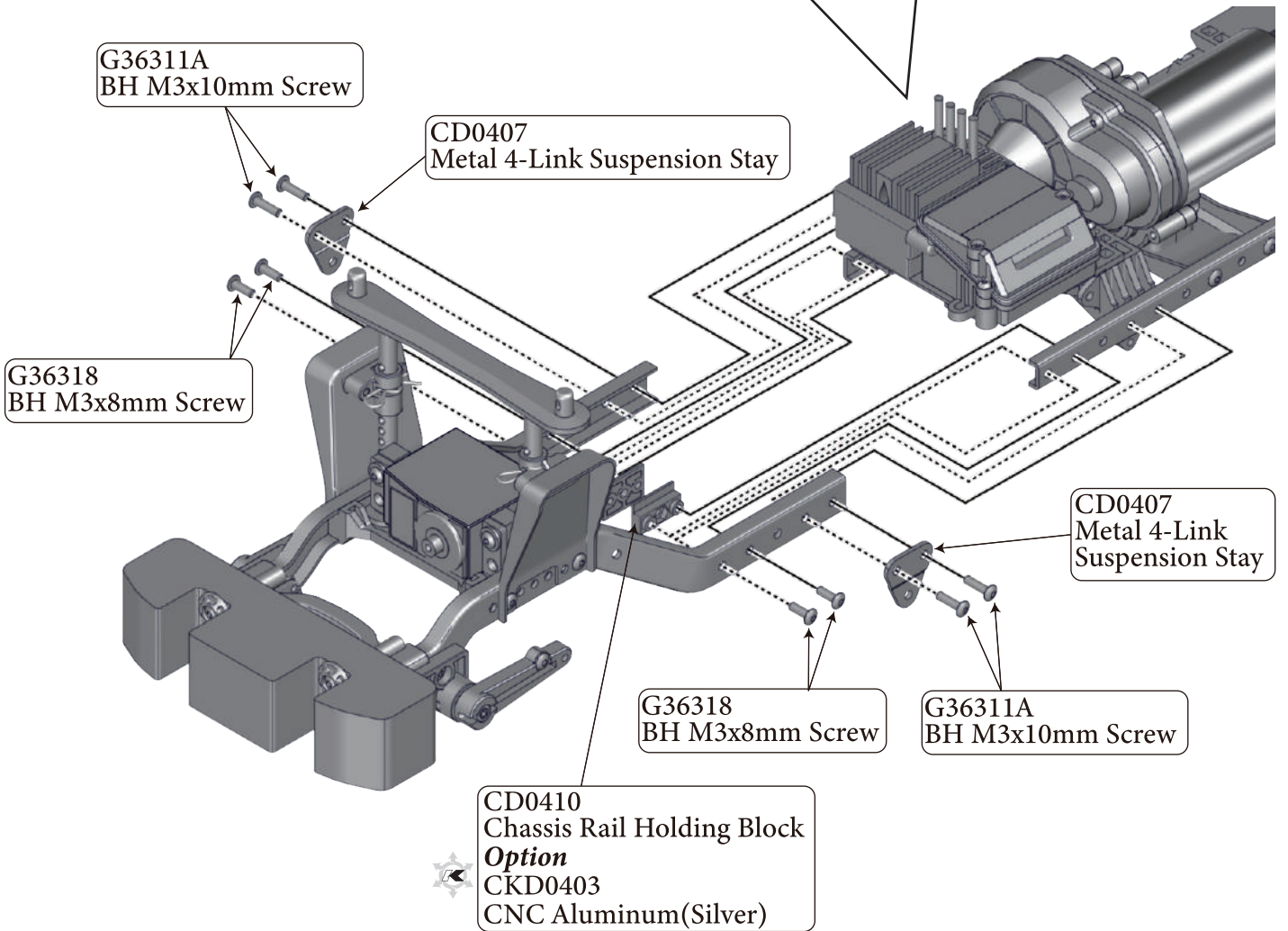
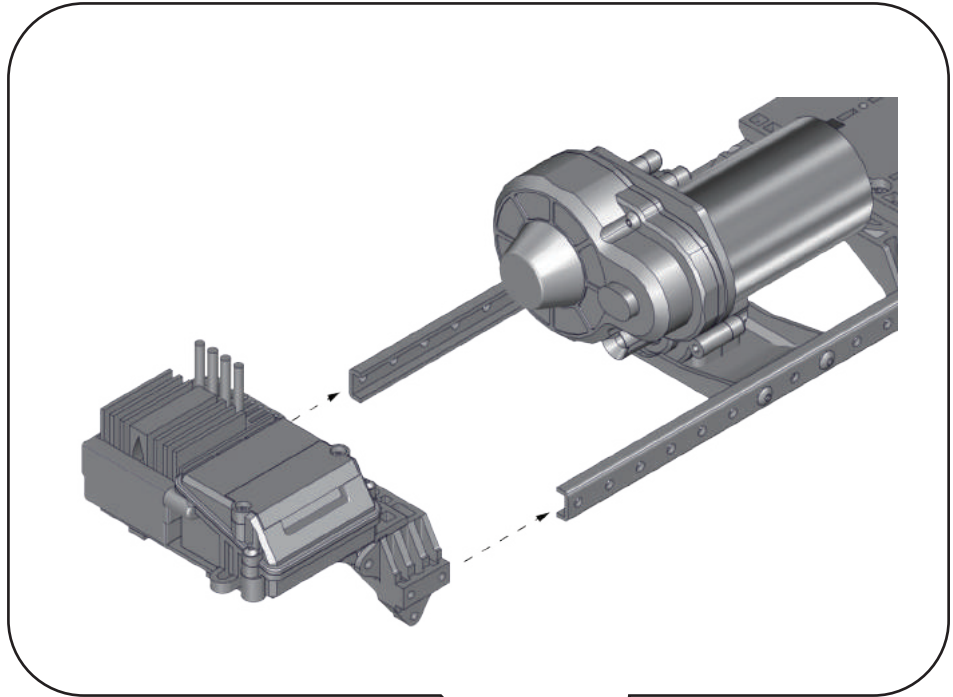
CD0152
Sway Bar Arm

CD0152
Sway Bar Arm

★
G36260
M4x3mm Set Screw

G36132
M3x5mm FH Screw

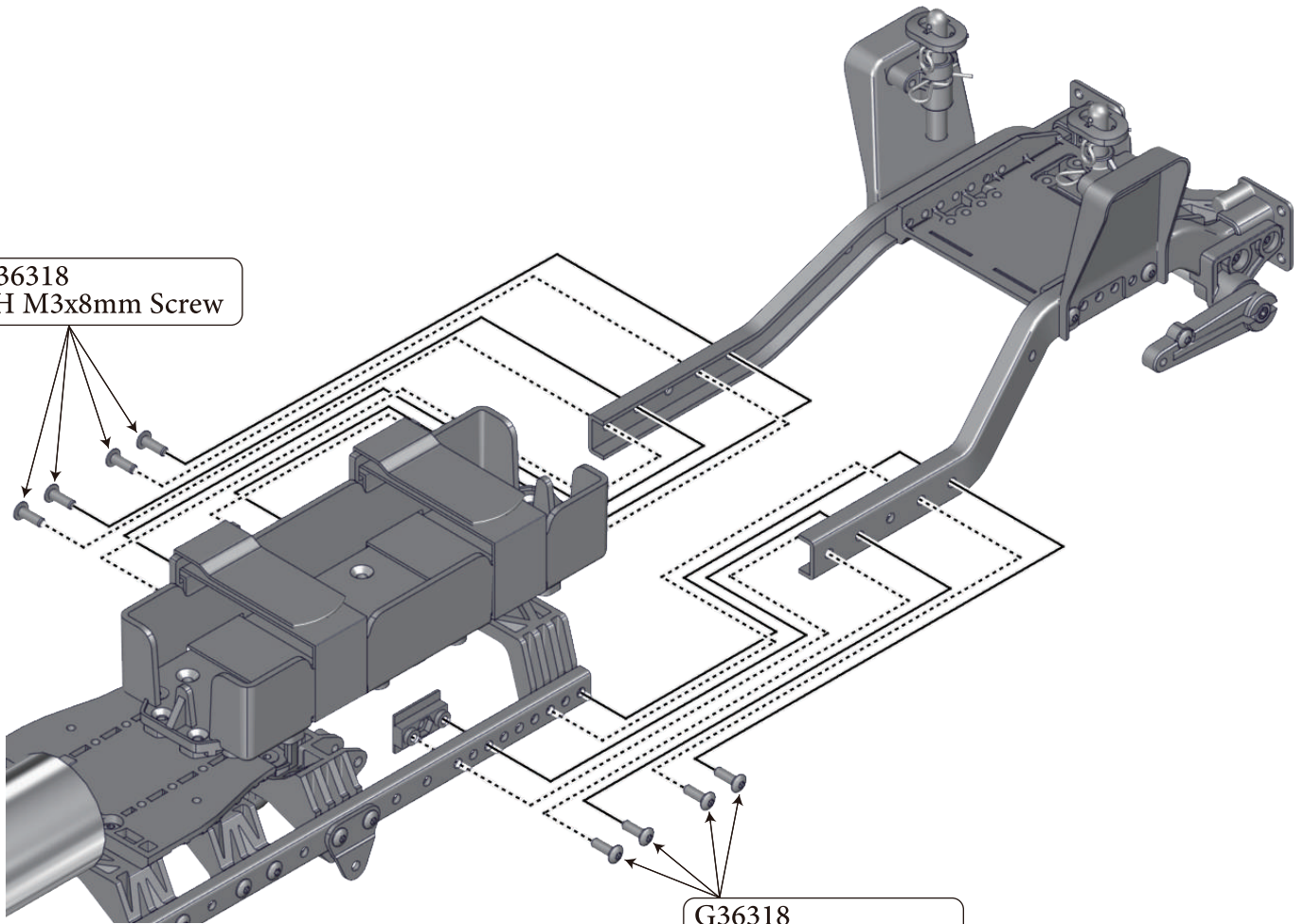




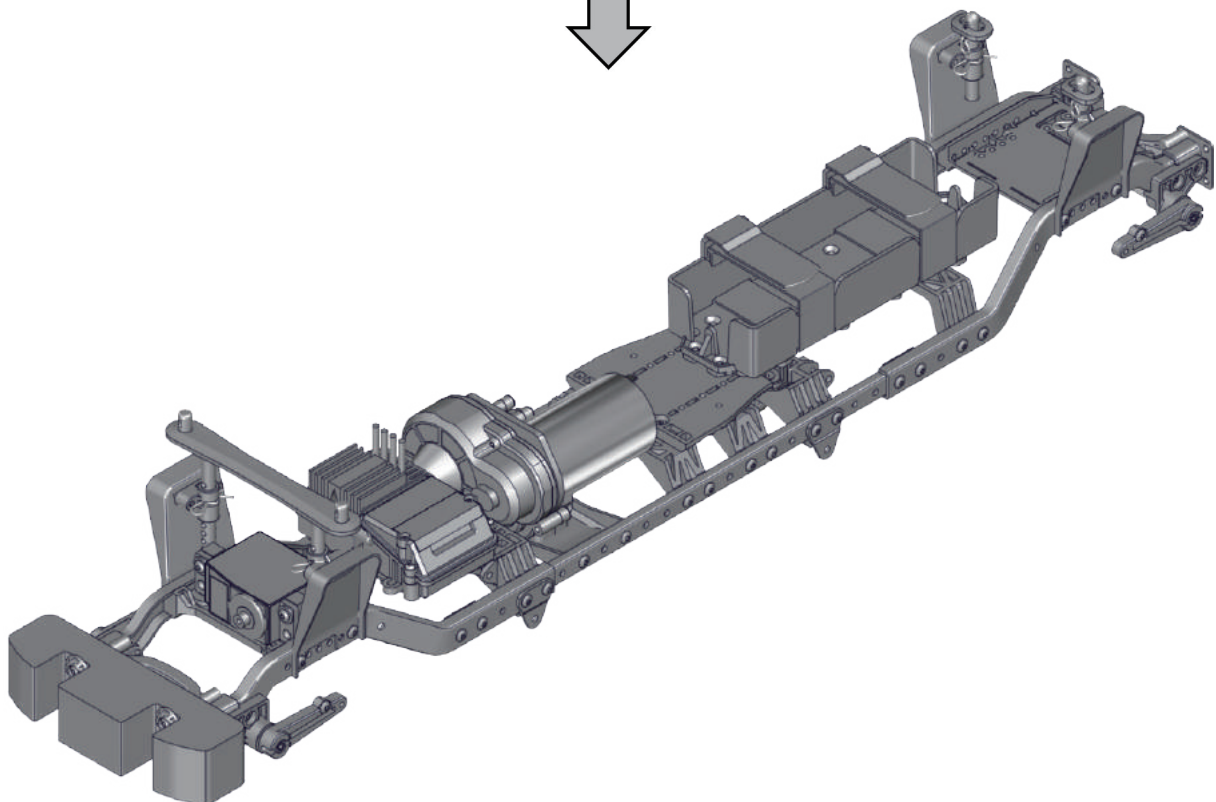
Rear Chassis Assembly



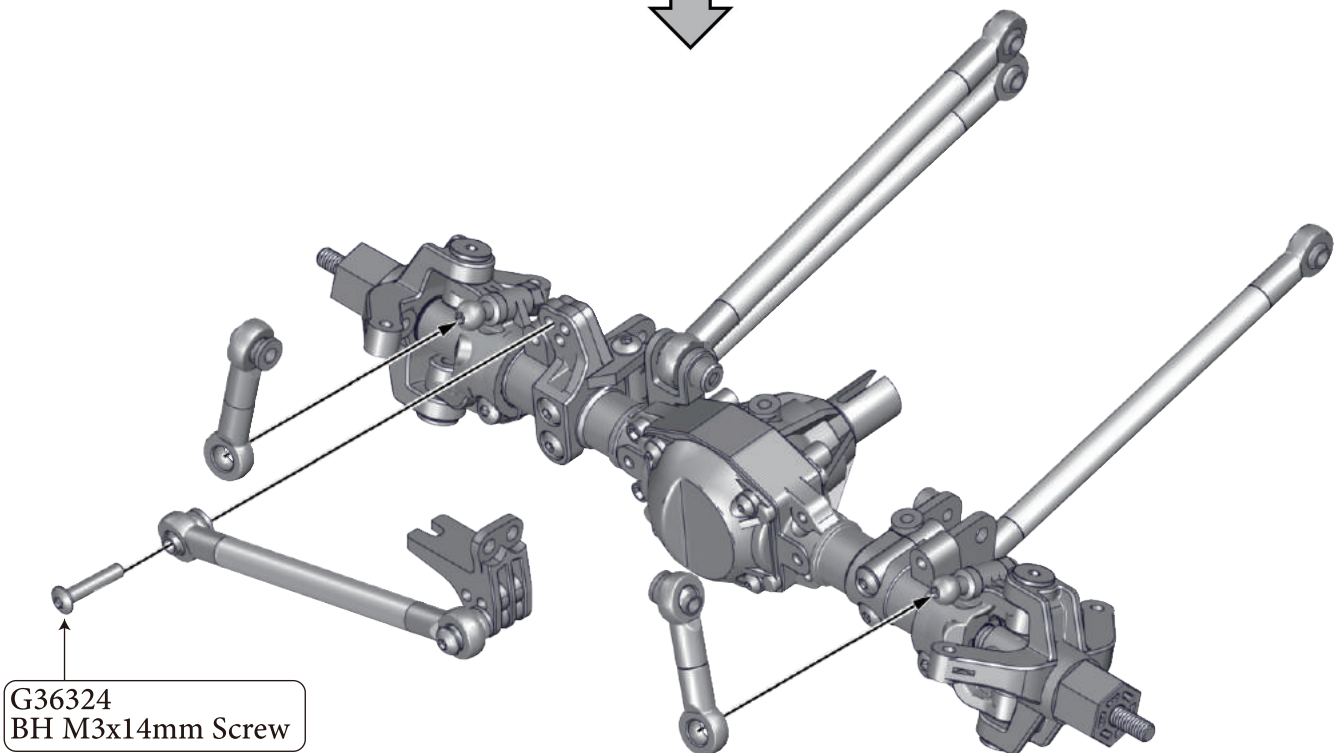
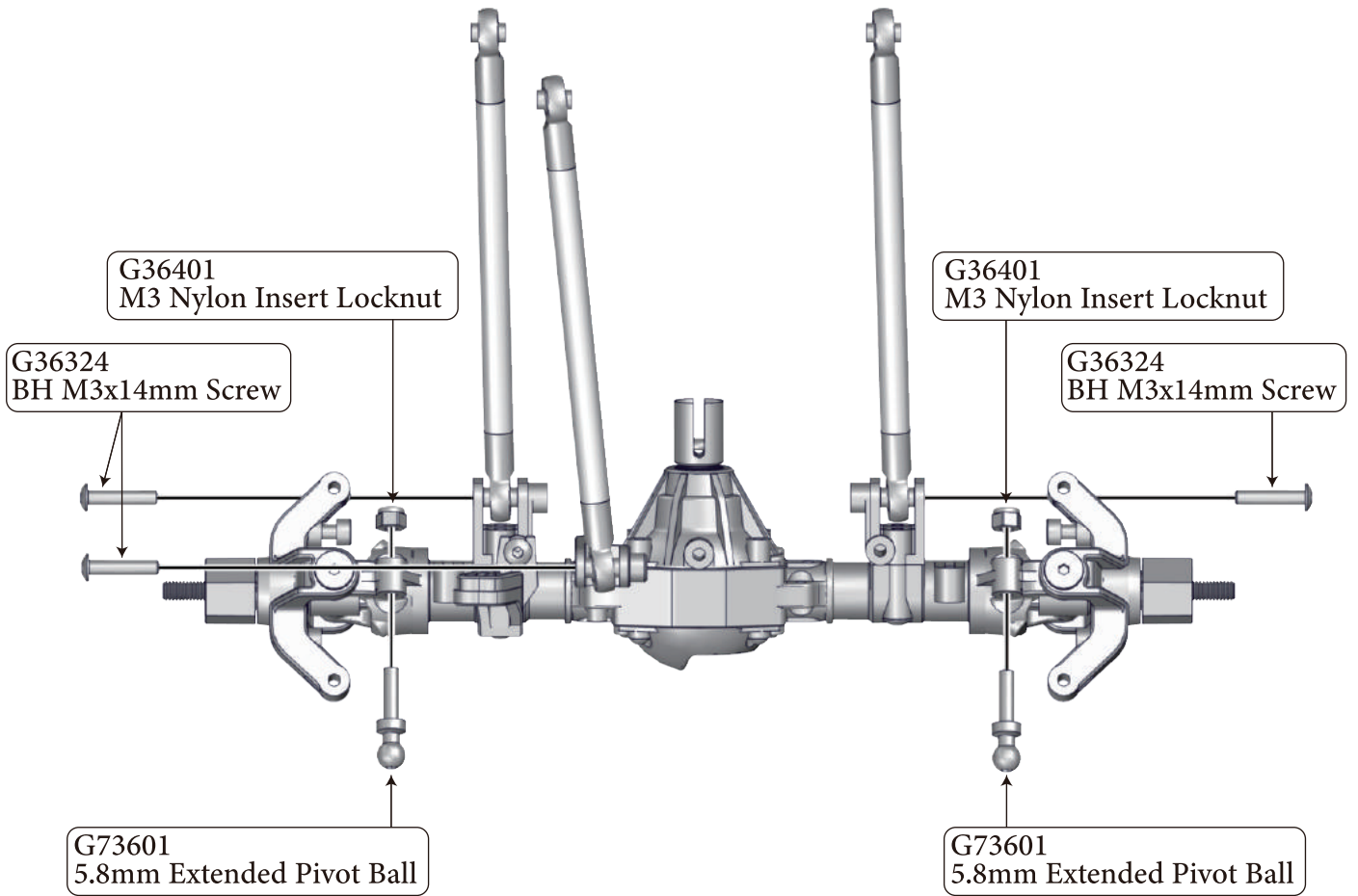
G36318
BH M3x8mm Screw



G36318
BH M3x8mm Screw

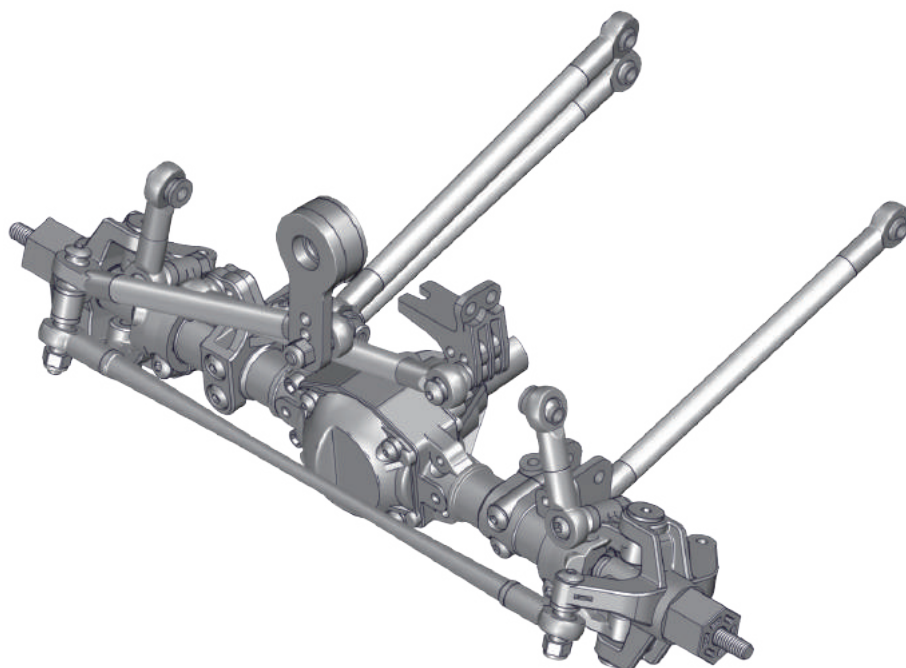
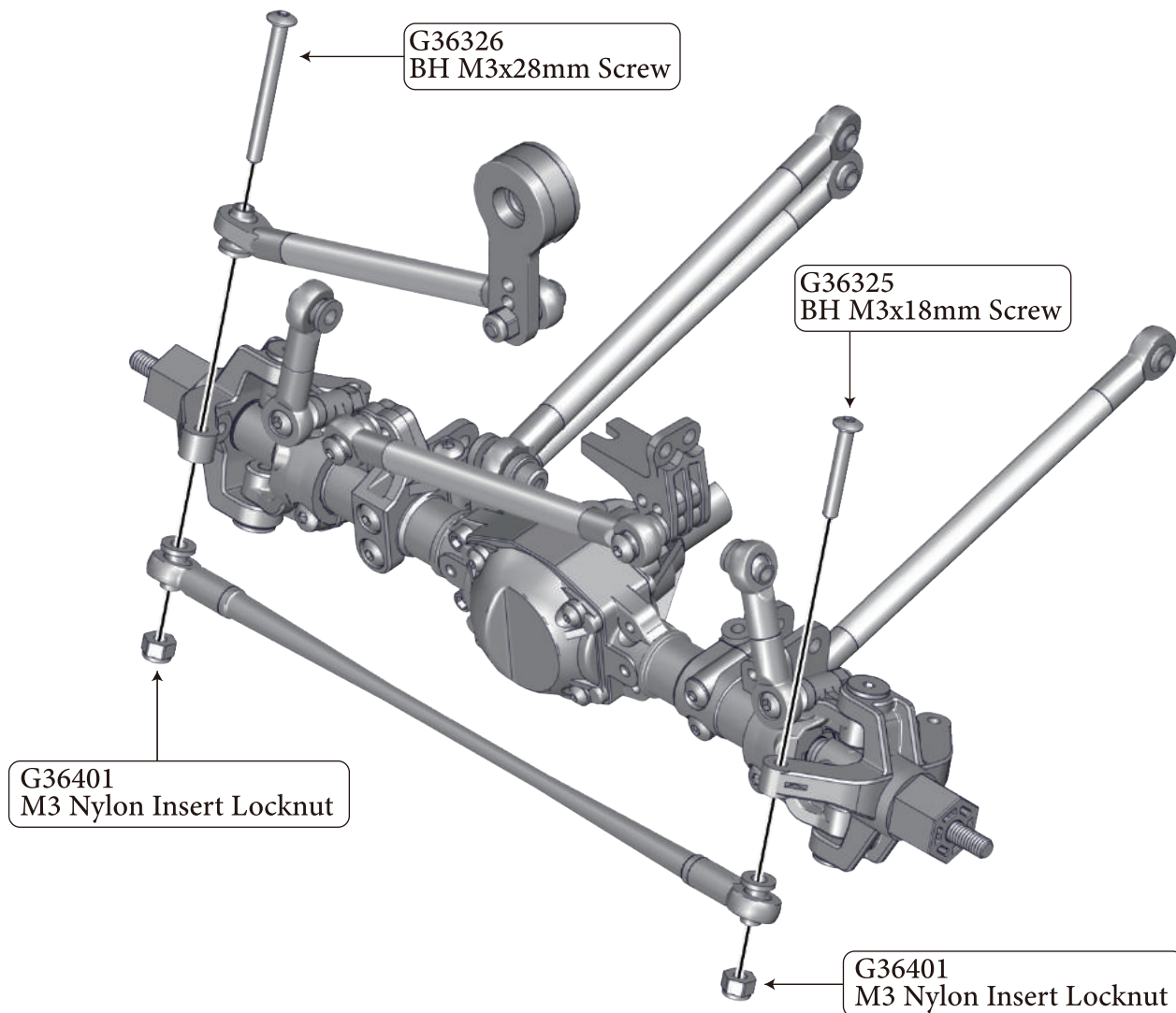


Front Suspension Linkages Assembly



Front Panhard Bar

Steering Linkages Assembly



Rear End Suspension Linkage Assembly

G36324
BH M3x14mm Screw

G36324
BH M3x14mm Screw



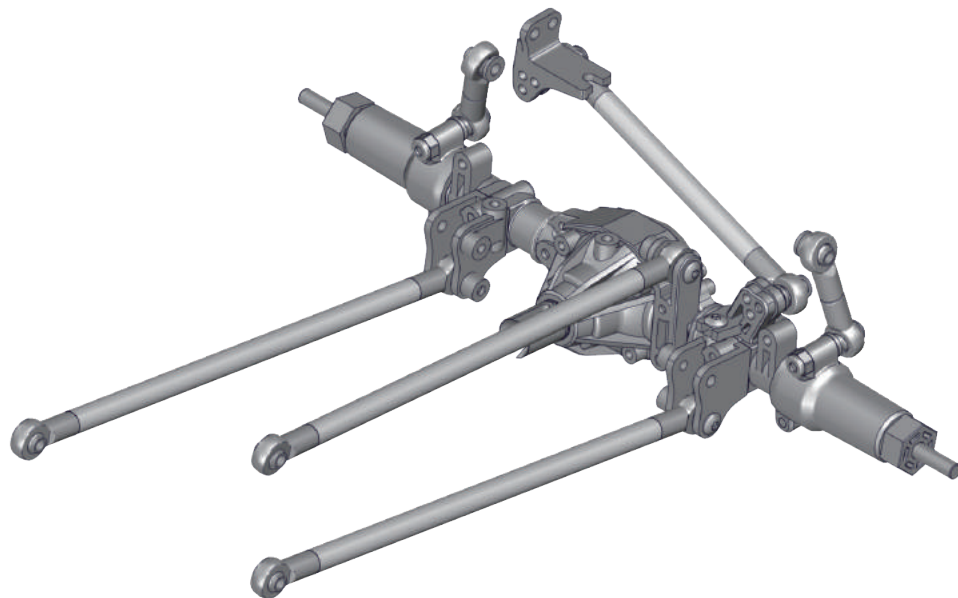
G36401
M3 Nylon Insert Locknut

G36330
BH M3x20mm Screw

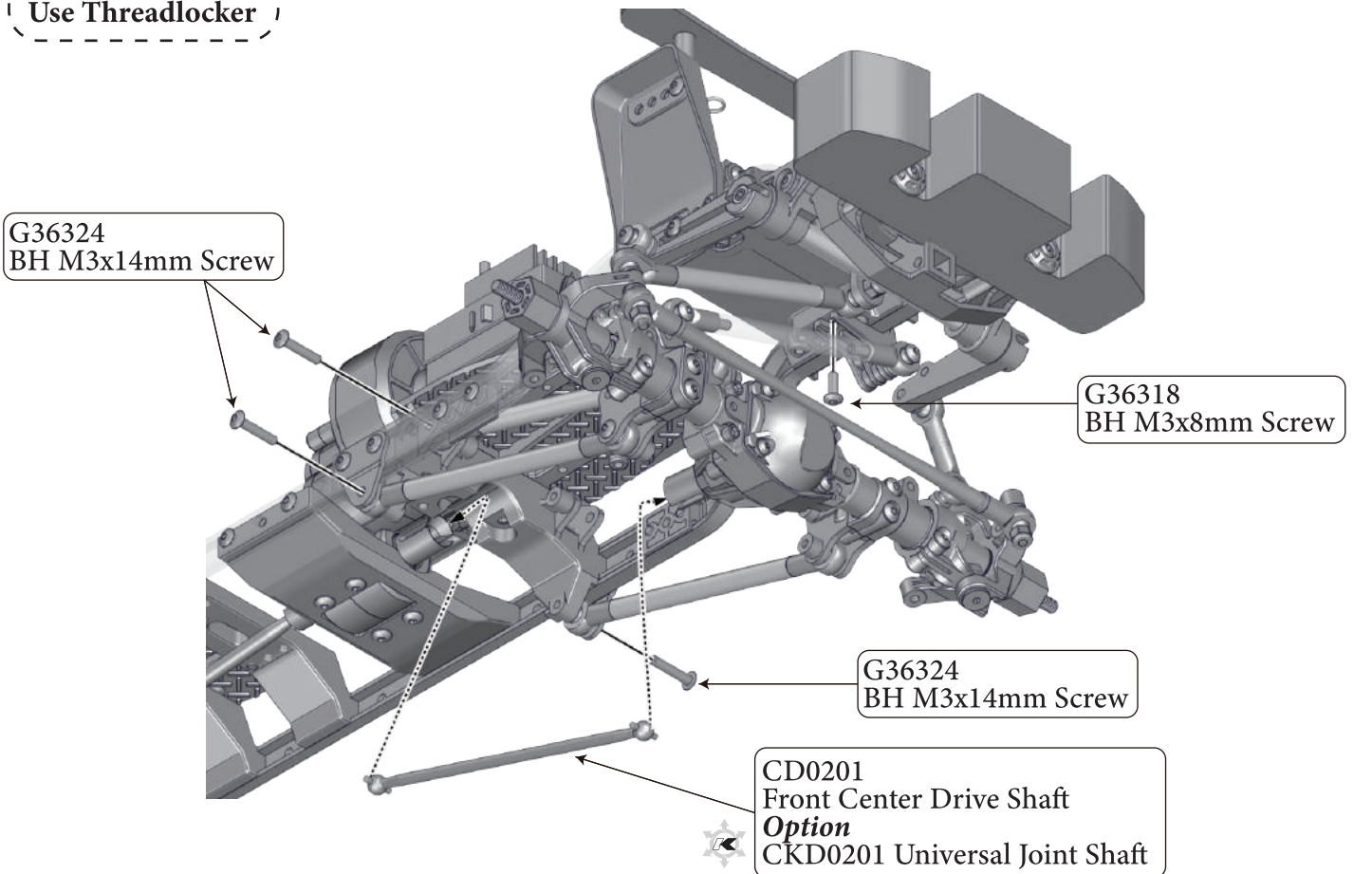
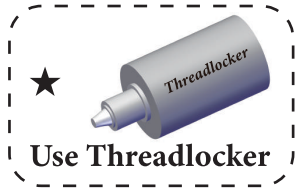
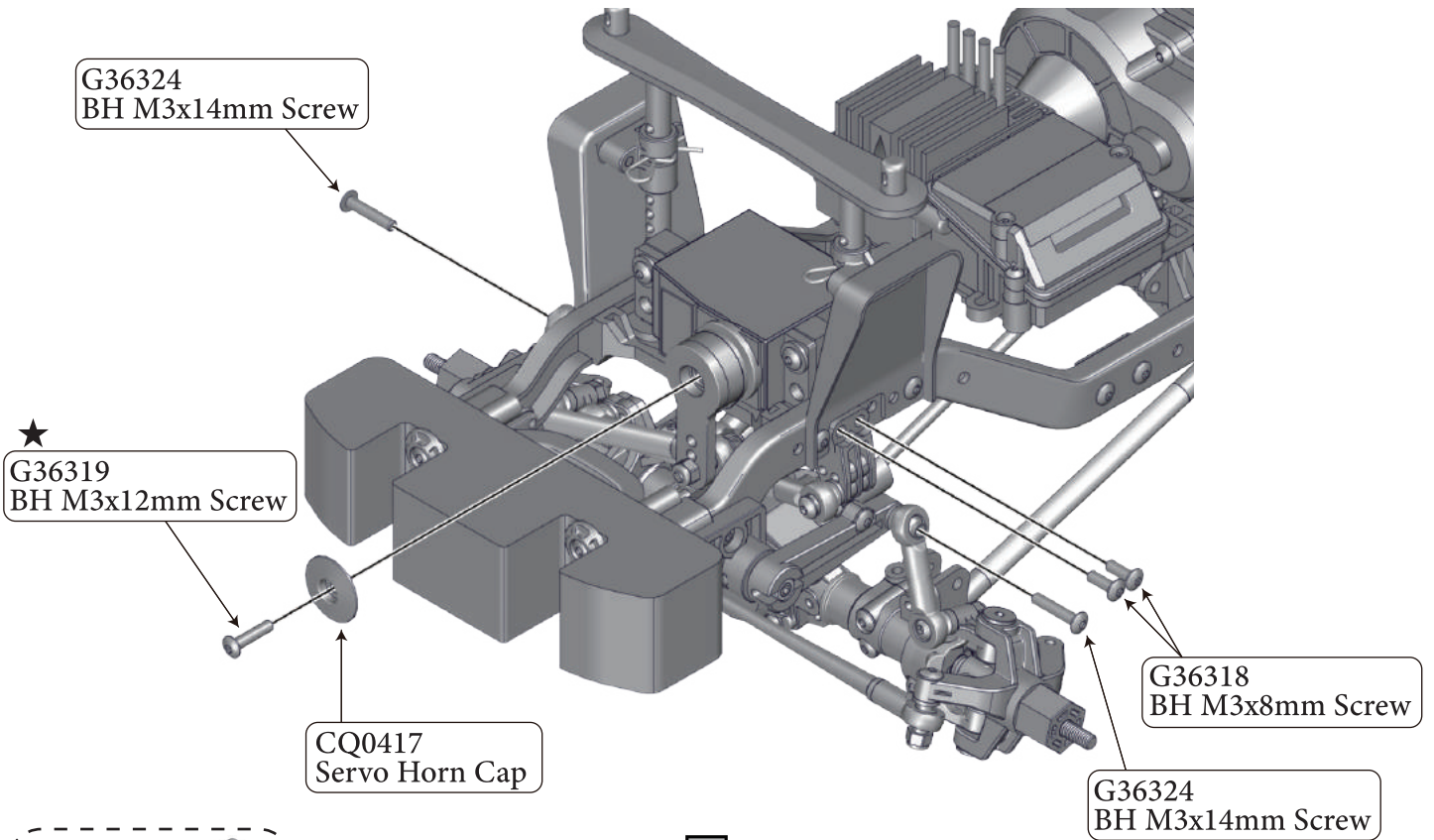
G36401
M3 Nylon Insert Locknut

G36324
BH M3x14mm Screw

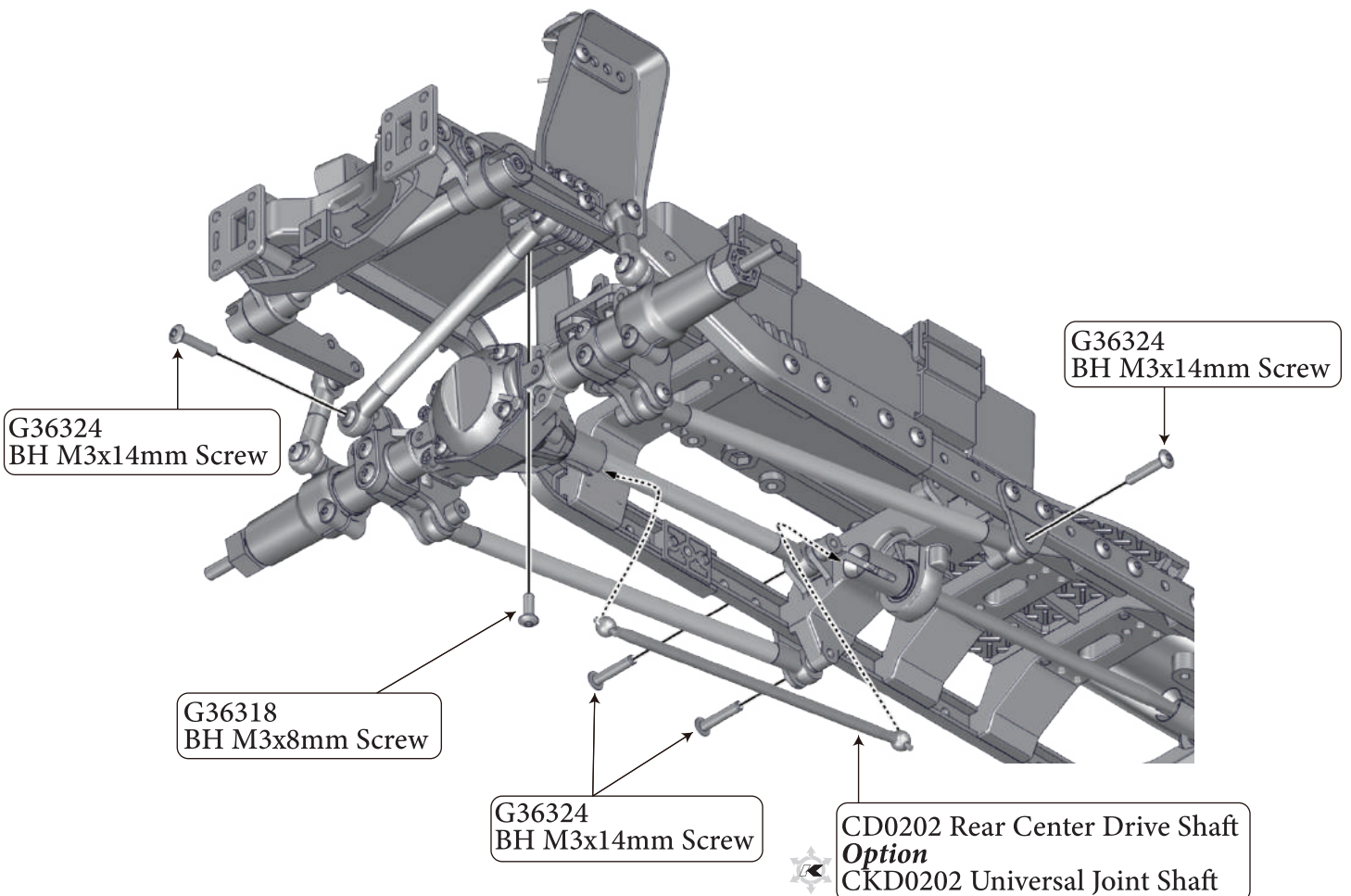
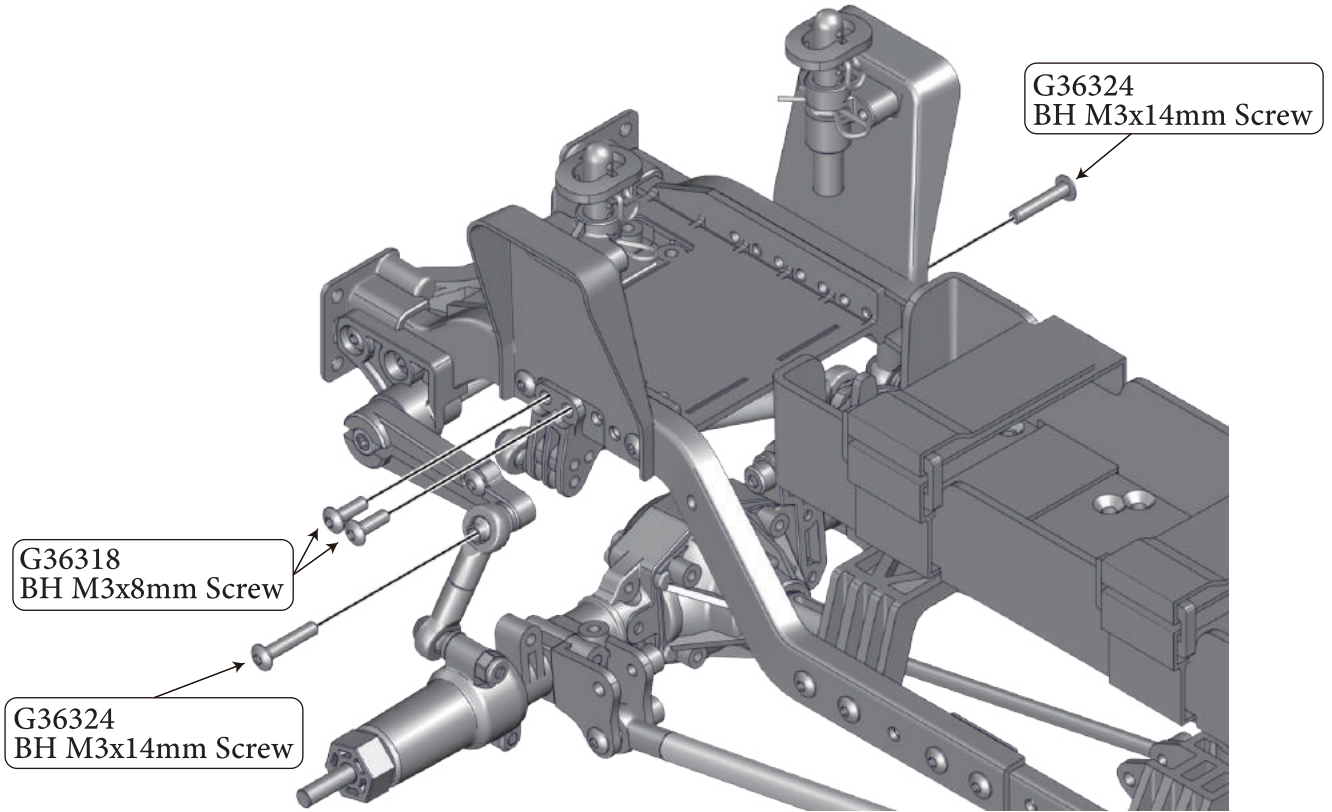
G36330
BH M3x20mm Screw



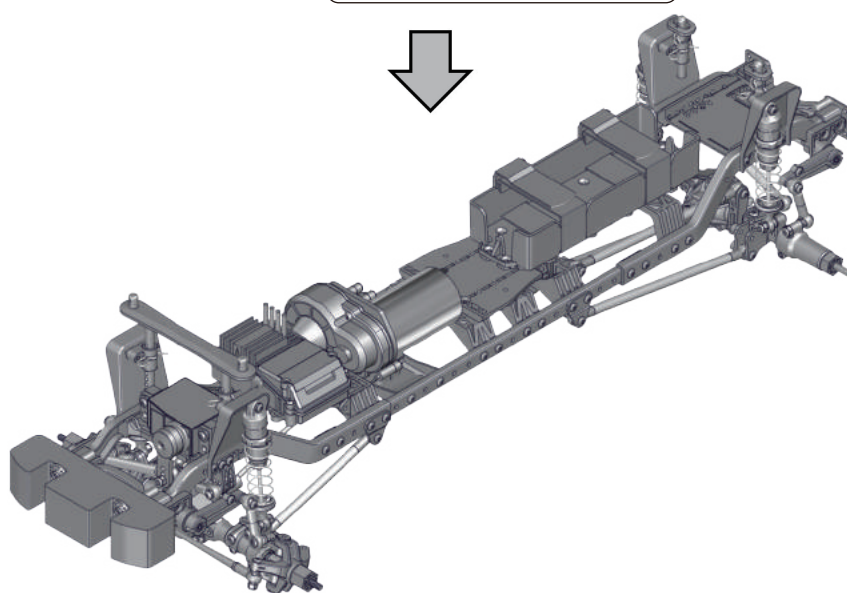
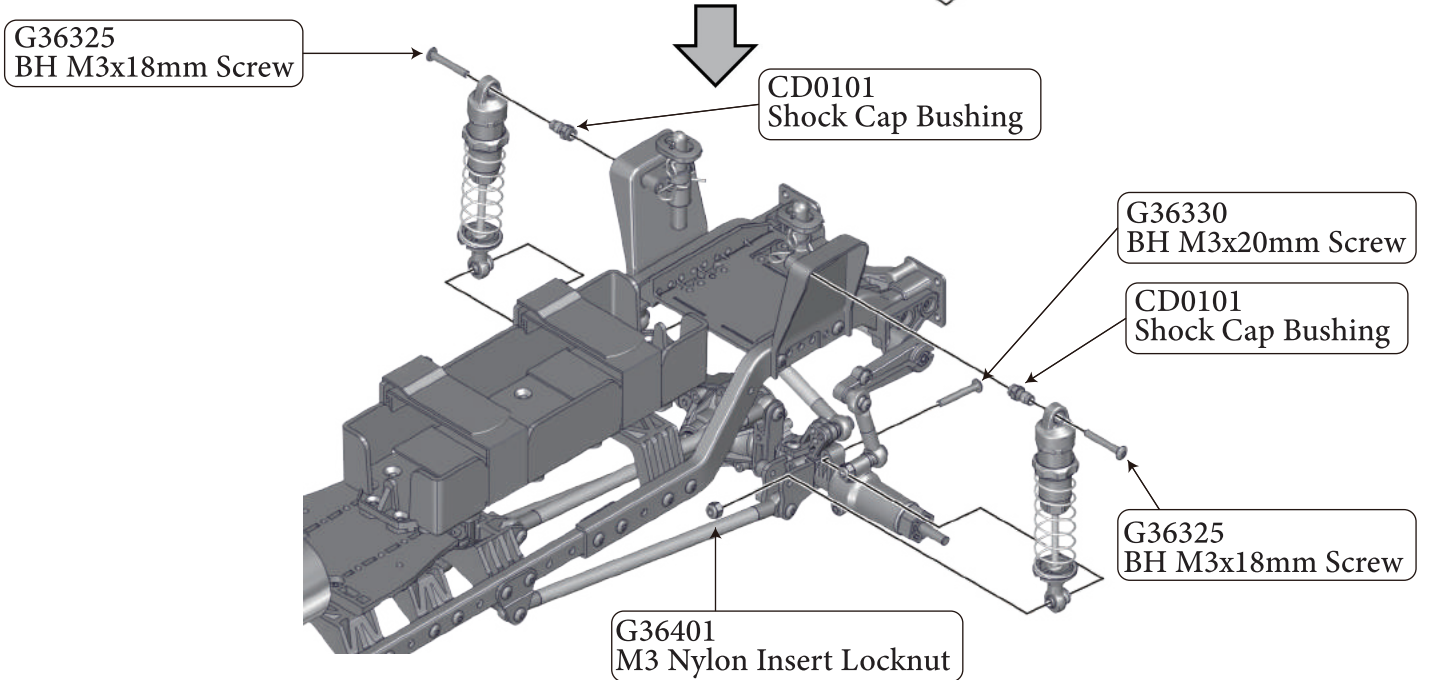
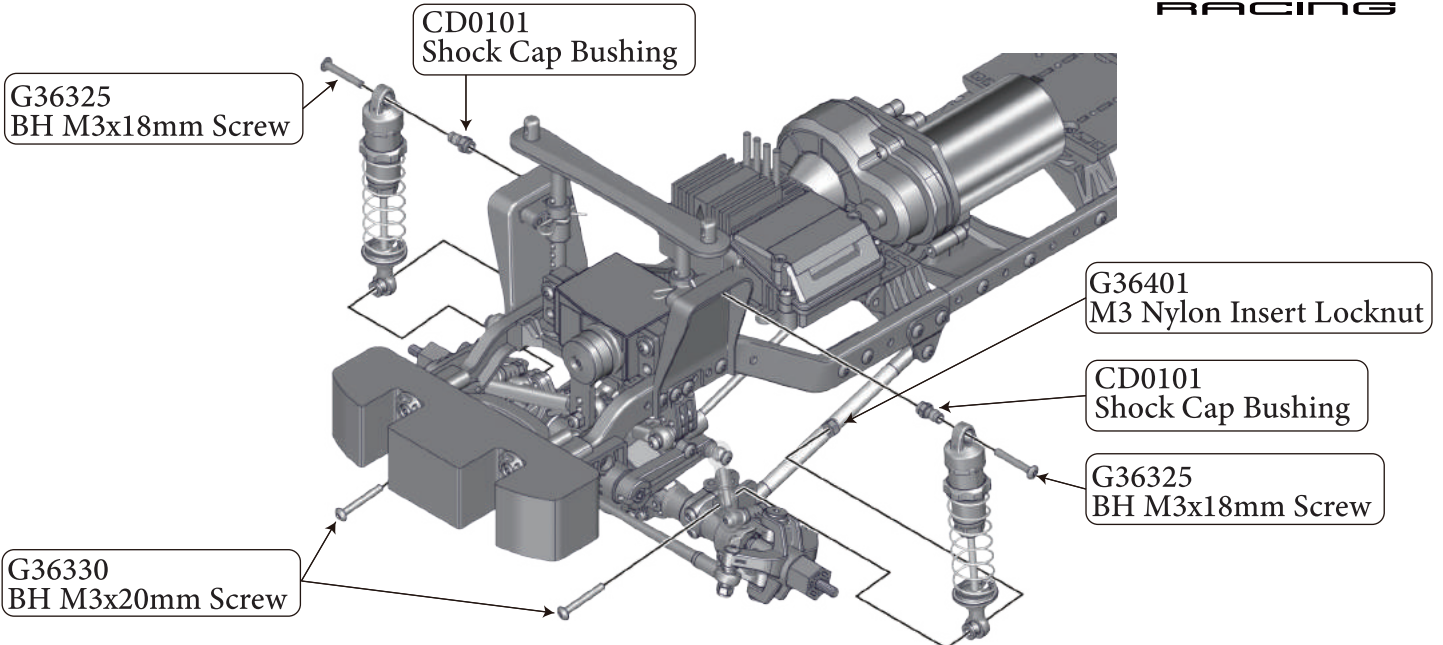
Front Chassis Suspension Linkages Assembly



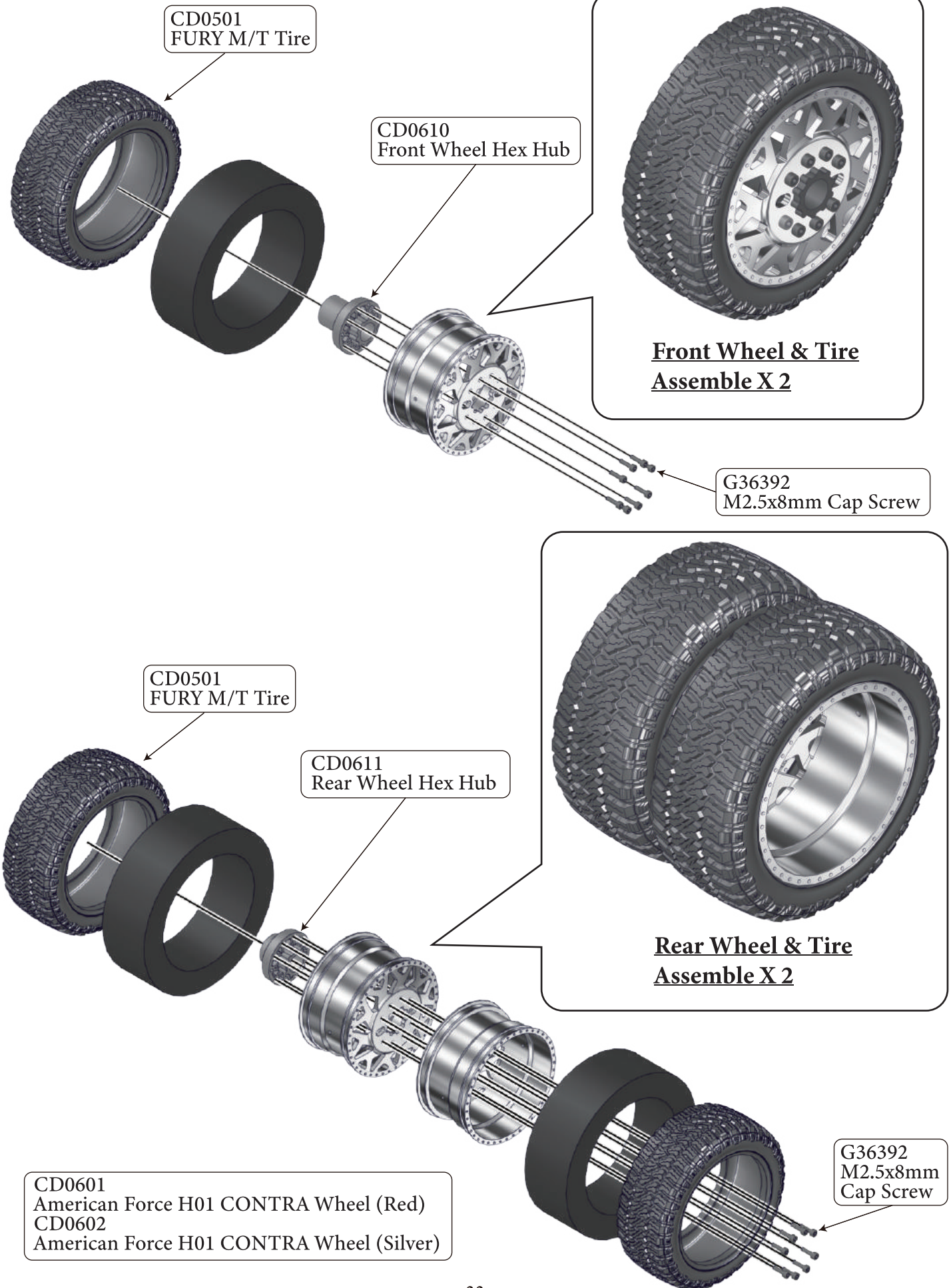
Rear Chassis Suspension Linkages Assembly



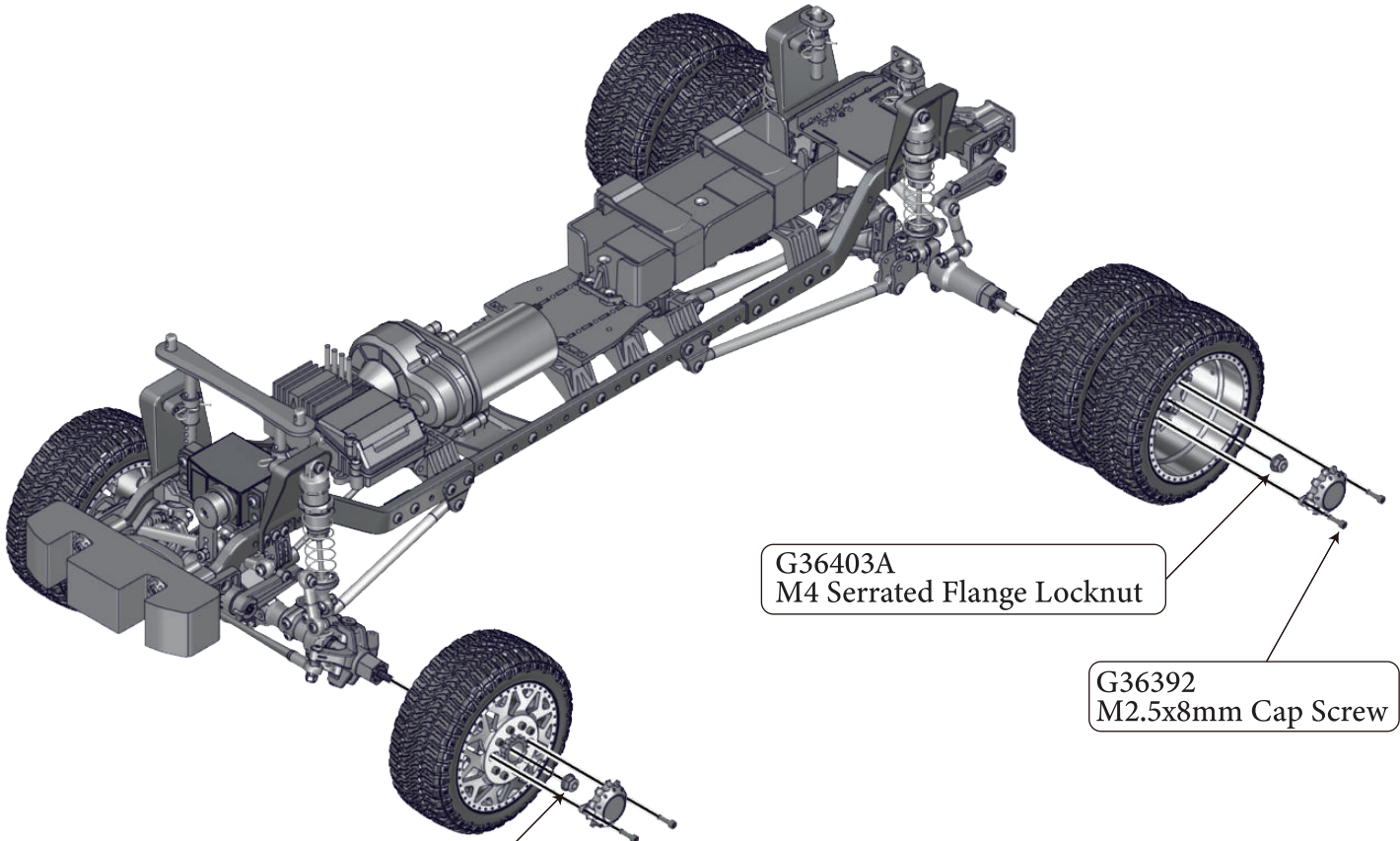
Installing Front & Rear Shocks



Wheel & Tire Assembly



Wheel & Tire Assembly

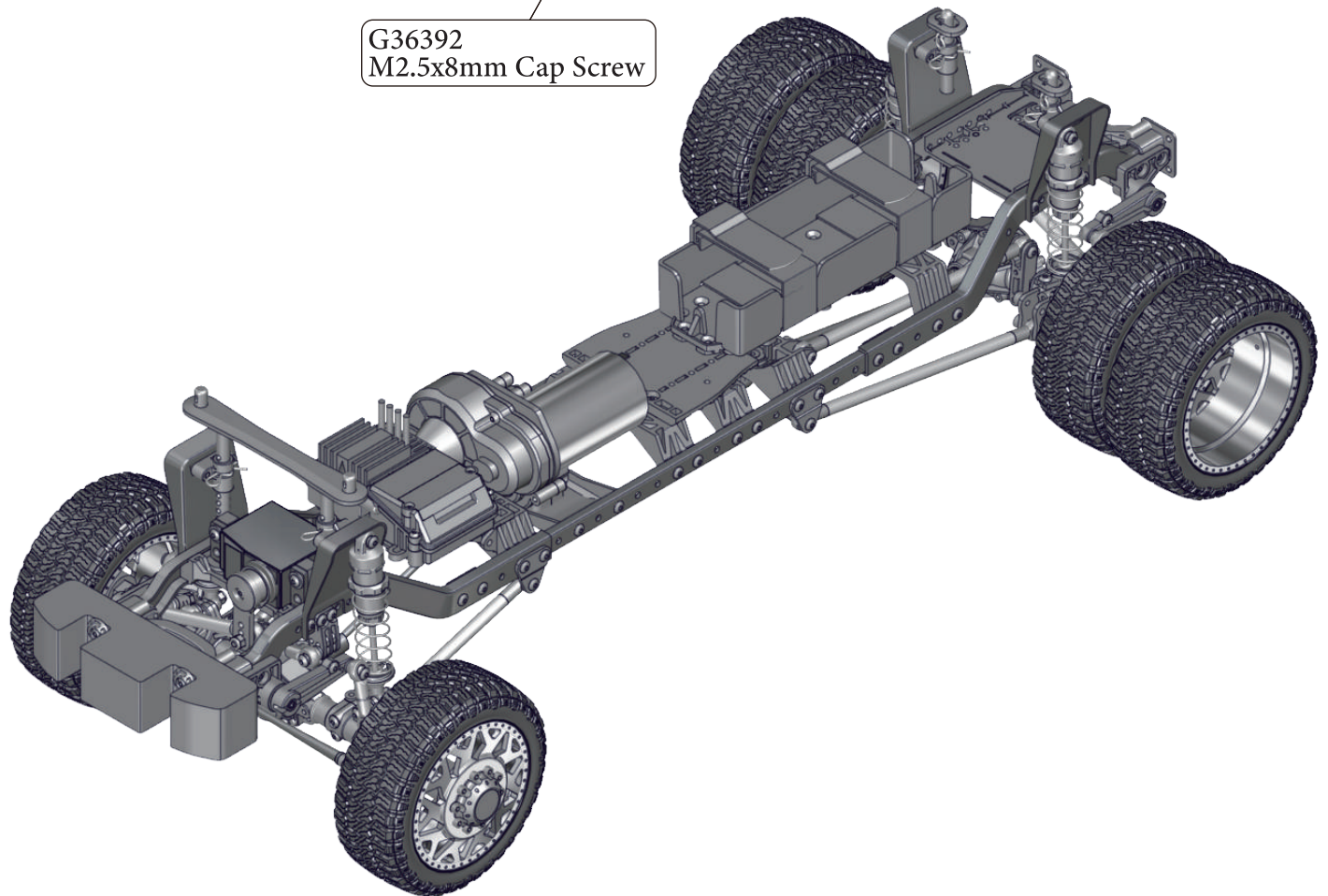


G36403A
M4 Serrated Flange Locknut

G36392
M2.5x8mm Cap Screw

G36403A
M4 Serrated Flange Locknut

G36392
M2.5x8mm Cap Screw



Ford



Manufactured by
CEN Racing Co.
10F, No.11, Ln 122, Sec.2 Ganyuan St.
Shulin Dist, New Taipei City 23853, Taiwan

CENRACINGUSA.COM



Ford Trademarks and Trade Dress used under license to CEN Racing.