



MORTOP

Press Bottom Bracket

Installation Manual

MORTOP INTERNATIONAL CO., LTD
mortopbike.com
info@mortopbike.com

rev. 21/8/2 # 1002

A. Enclosed In Box



Press BB



Special Bearing



Dust covers



Spindle Spacer



Nano Lubricant

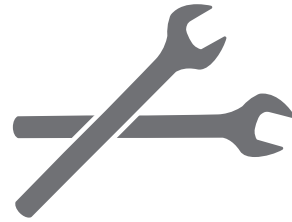


Assembly Lubricant

B. Tools for Installation to need



Pair-locking BB Tool

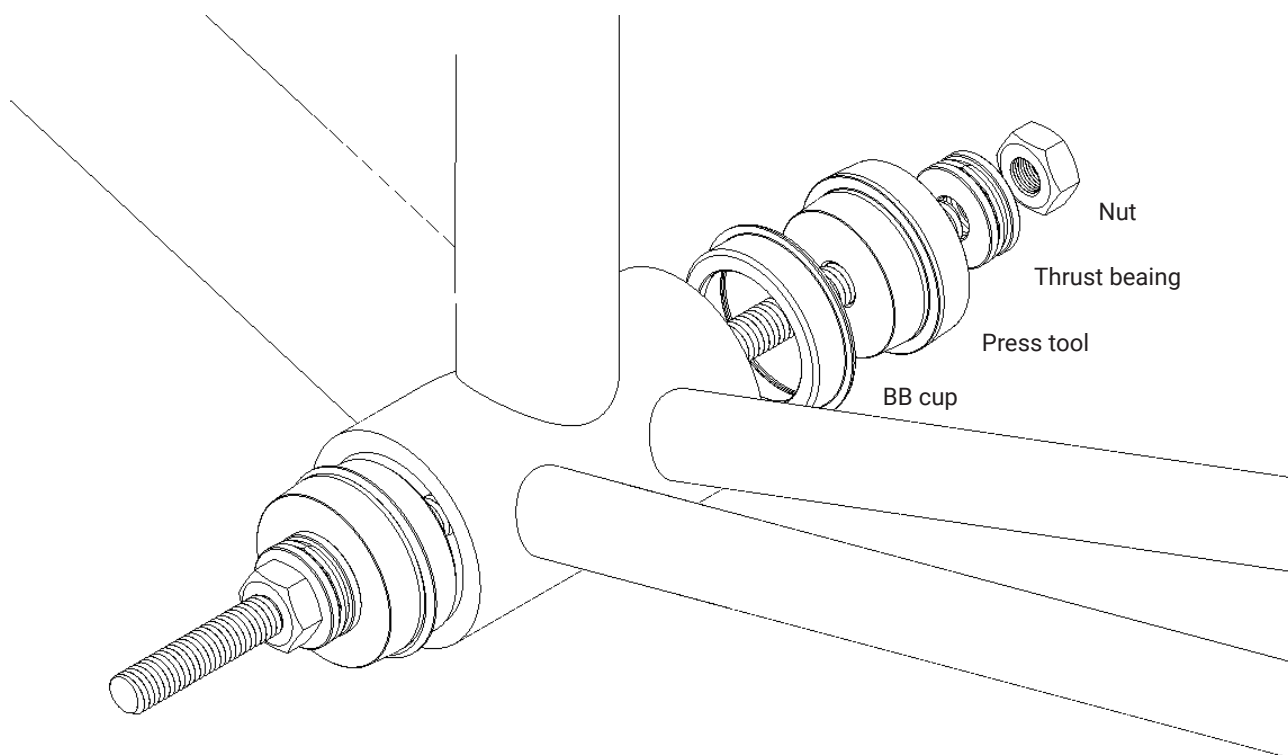
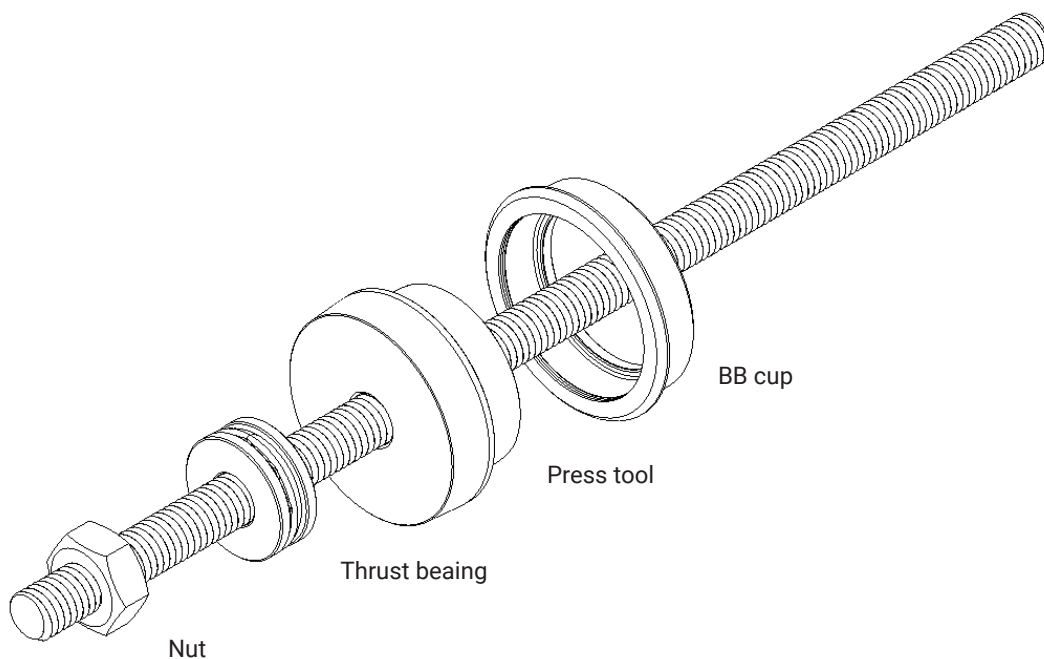


Hex Wrench

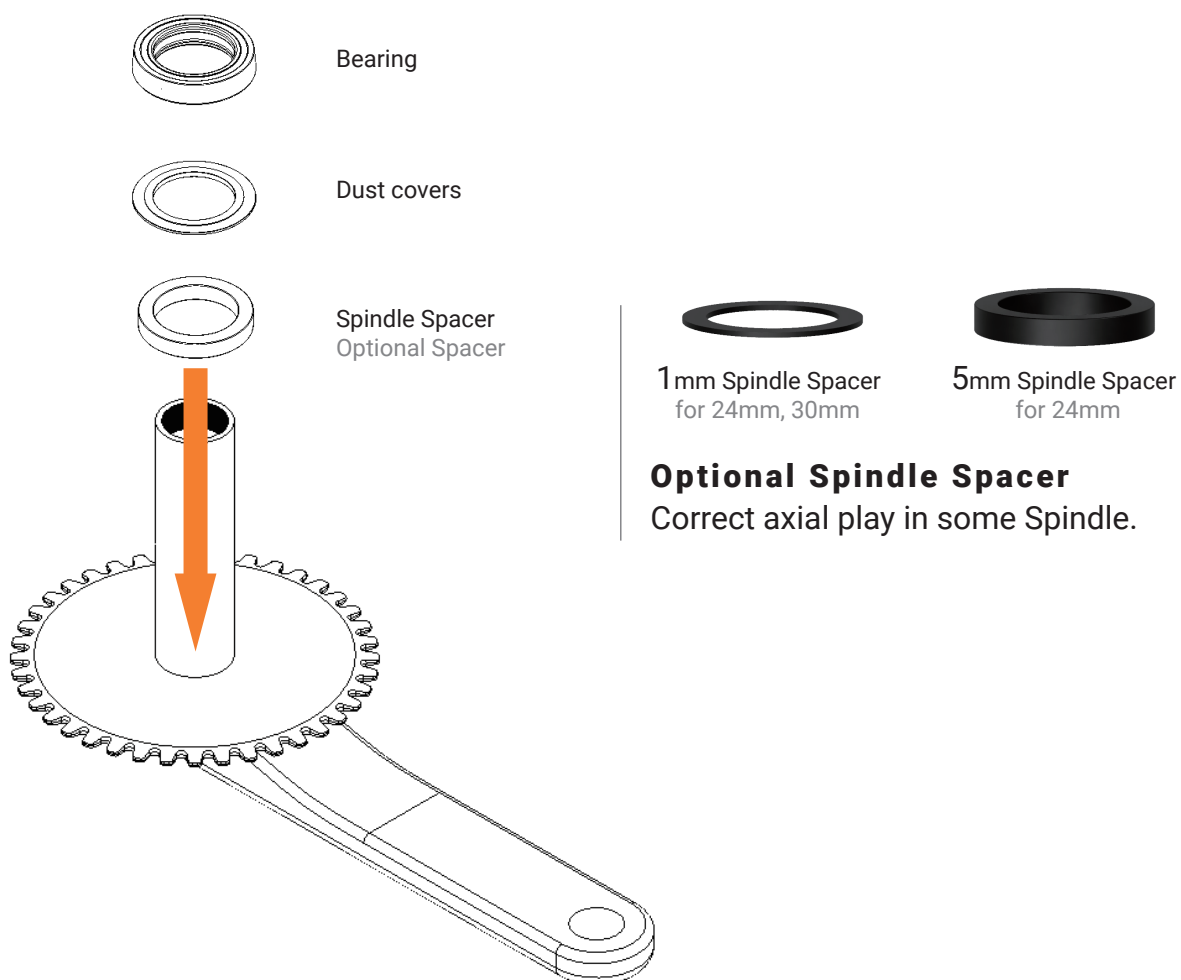
C. Steps

1. Clean the bottom bracket thoroughly to ensure that there are no old oil stains and dust.
2. Coat the inner edge of the frame shell with the assembly oil and spread it out evenly.
3. Coat the assembly oil on the out edge of BB cup.

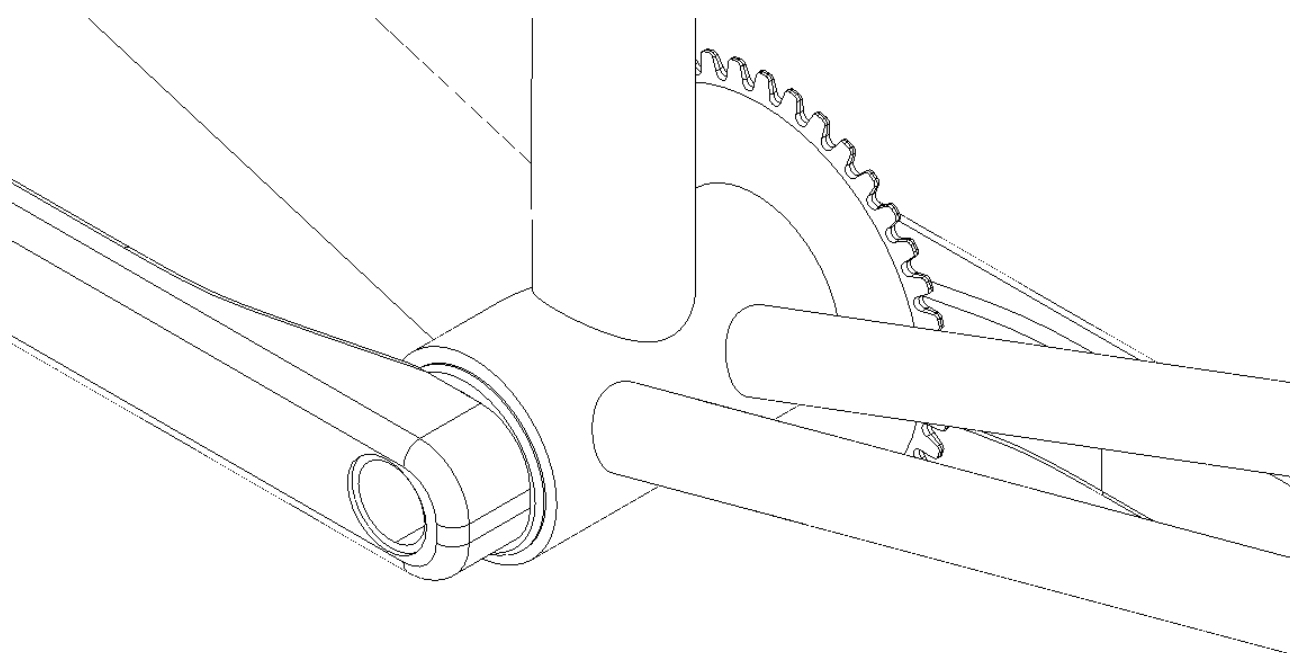
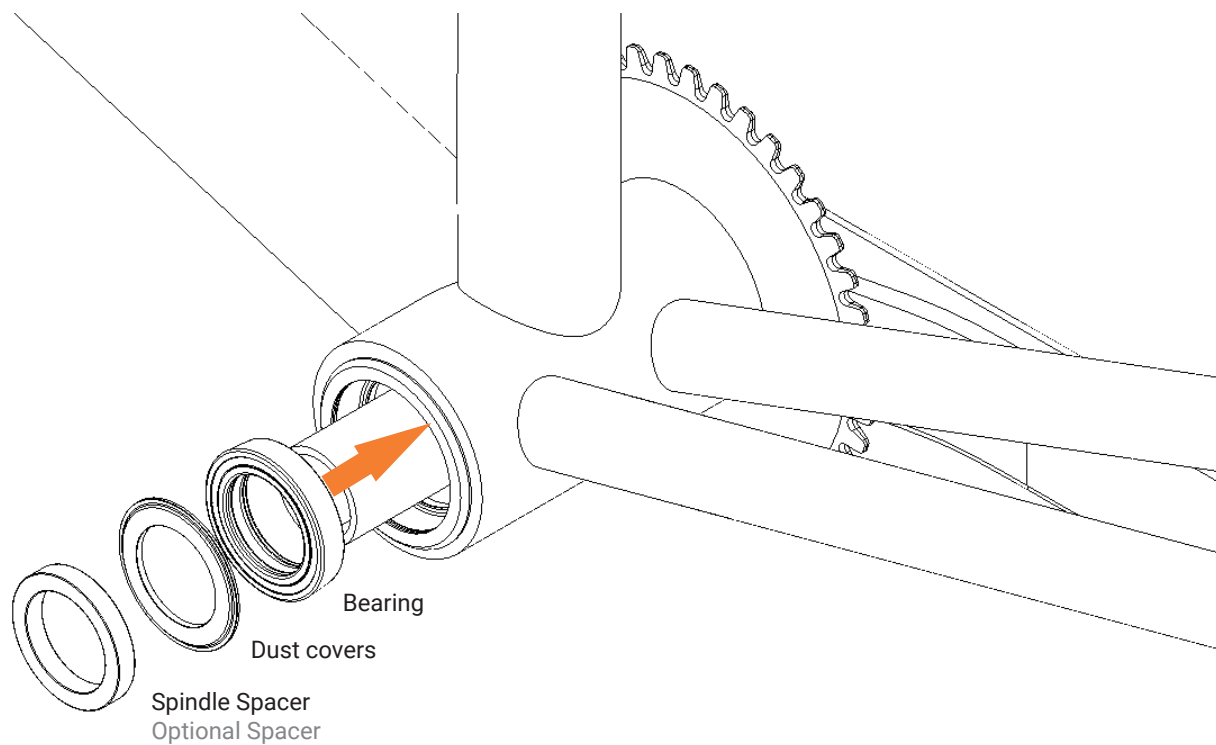
4. First step, the spindle with nut, thrust bearing , press tool and BB cup without bearing insert into the frame shell then the other side put into the BB cup without bearing, press tool, thrust bearing and nut. second step, use hex wrench press two side , note: it need to press one side a little then the other side press a little. slowly press into the frame shell. it not allow to press BB cup of two side one time.
(If you use non-mortop special tools. the BB cup have to include the bearing).



5. Check the distortion of the stroke or incomplete installation. If the installation is not correct, it will cause damage to the bearing and even affect the frame when riding.
6. Apply assembly oil on the outside(orange sealing) of the bearing and inside of BB cup of two side.
7. Put in option spacer, dust cover, bearing in order on the spindle of crank.(please pay attention to the directionality of the bearing, the orange sealing ring faces freewheels).



- Put in the crankwheels with bearing into frame shell.
- Same steps as above to be done on the other side Install the bearing, dust cover, optional Spindle spacer, and leg set in order. (the orange sealing ring of the bearing toward leg set)

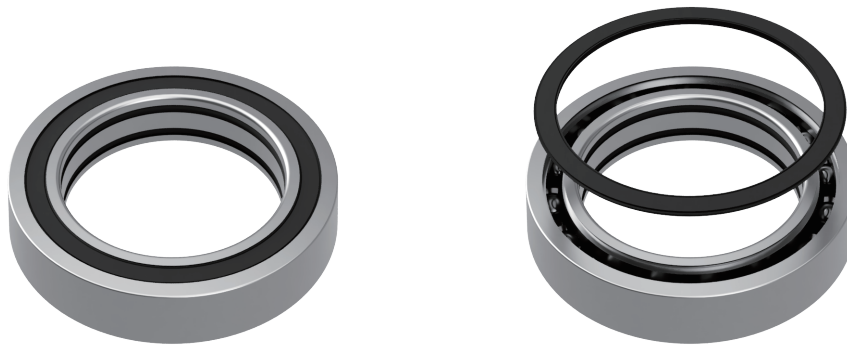


10. After cleaning up the remaining oil around, wipe it down thoroughly. By following these steps, you can significantly extend the life of your bike and your riding journey.

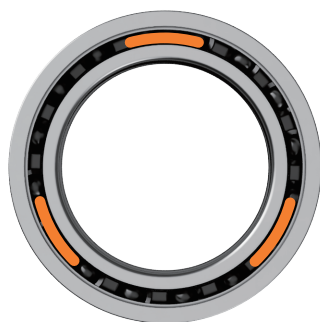
After assembly, ensure that the crank screws on both sides are installed correctly. Once the installation is properly done according to the given steps and instructions, match it up with Mortop's bearing and bottom bracket, and use our recommended lubrication. We guarantee you will definitely feel a huge improvement in speed and smoothness of ride. This is where it gets simple: enjoy your ride.

D. Maintenance

1. Remove the bearing from the BB.
2. Disassemble the two-sided sealing ring first, and use a sharp tool to pick it up from the inside of the sealing ring to open the sealing ring and clean the old lubricating oil inside.



3. Add new lubricant to the inside of the bearing (black seal ring) then put back the sealing of two end.
4. Twist the bearing about 5 second.
5. Put the bearing back into the BB, please refer to the installation steps for the assembly method.



Use nano lubrication to apply range