



YOUR PROJECTS ON TRACK

Houses & Cases

3850 East Mustard Way
Springfield, MO
65803

417-864-5411
Toll Free: 800-852-5587
sales@lwind.com
www.lwind.com

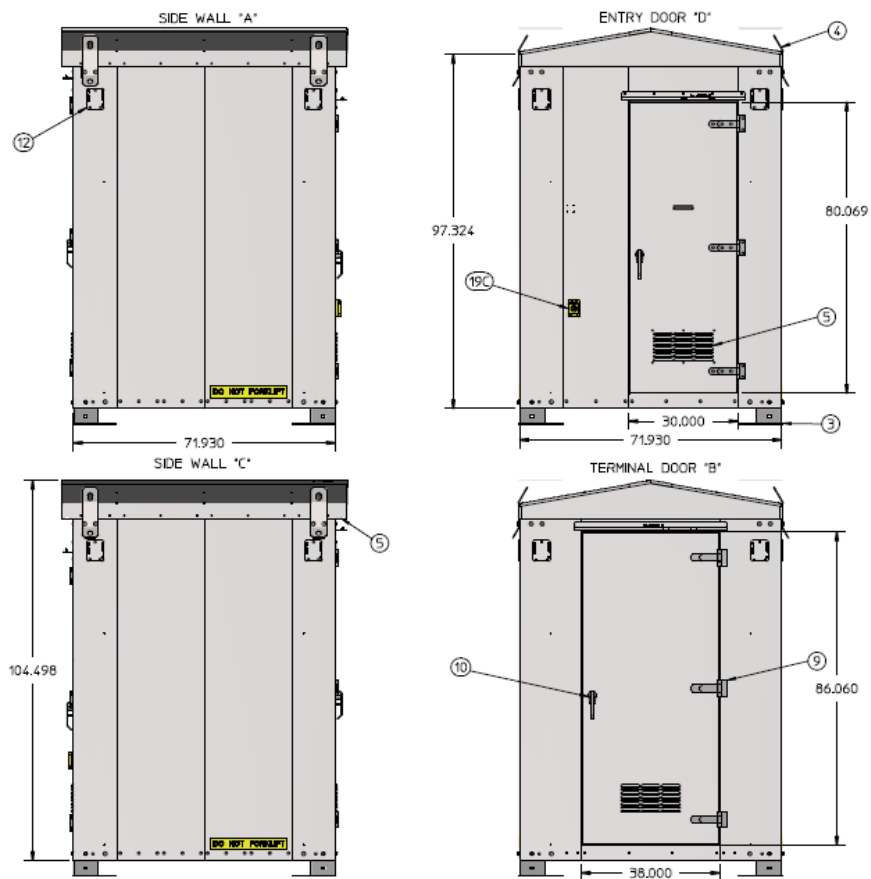
HOUSES, CASES, & ACCESSORIES

House Information.....	2
Case Information	4
Padlocks, Vent Fans, Thermostat Aerial Cable Outlets Grounding Material Including A Ground Loop Kit, Ground Rods, Ground Rod Driver	5
Power Indicator Lights, 4" Lens Guards	6
Rubber Flooring, Door Handle Cover, Shelf W/Sliding Tray, Portable Laptop Shelf, Heaters, Generator Plug Box	7
Equipment Rack, Relay Bar, Tie Bars 19" & 23", Battery Trays And Battery Case	8

HOUSE or BUNGALOW

L&W offers a broad range of manufactured houses/cases. We have the expertise and ability to produce enclosures that are manufactured from aluminum, stainless steel, or powder coated. These enclosures function well in a variety of mission critical applications in some of the harshest environments. Our focus is to closely integrate engineering, manufacturing, quality, and customer service systems.

TYPICAL 6X6 BUNGALOW
(4'x4' to 10'x??, typically 2' increments)



We Will Adjust Our Design or Build to Your Specific Requirements.
Send Us Your Spec. or Call for Pricing

HOUSE or BUNGALOW

With expertise and experience in electrical equipment applications, L&W can provide solid enclosures for most any railway applications.

High quality enclosures with excellent fit and finish.



STANDARD FEATURES

STAINLESS STEEL HARDWARE
 ESCAPE 3 POINT DOOR LATCH
 GASKETED DOORS
 STAIN.STL SCREENED EXHAUST VENTS
 FILTERED OPEN/CLOSE DOOR VENTS
 RAIN SHIELD OVER DOORS
 VENTED DOOR PANEL CONSTRUCTION
 RIGID INSULATION
 LIFTING EYES
 CEILING FAN (EASY MAINTENANCE)
 DROP DOWN LEGS
 FLOOR MAT
 SMOOTH FINISHED WALLS
 CLASS "C" .030 LAMINATED PLYWOOD
 AERIAL CABLE ACCESS ALL CORNERS
 UTILITY SERVICE THRU FLOOR
 4" CABLE ACCESS
 WIRE CHASE ON CEILING
 TERM. BOARD or LIGP (AS REQUIRED)

OPTIONAL FEATURES

FIXED RELAY RACK (TERMINAL BOARD)
 ANTI-SKID FLOORING, NO MATT REQ'D
 RELAY BARS & WIRE TIES
 THERMOSTAT CONTROLLED HEATER
 OVERSIZED HEATER
 AIR CONDITIONER
 12"X12" ALUMINUM/LEXAN BOX
 100 AMP SERVICE
 AERIAL MTD WALL VENTILATION
 LOUVERED WALL VENTILATION
 UTILITY SERVICE THRU WALL
 CABLE CHUTE
 ADDITIONAL WIRE CHASE
 GENERATOR PLUG
 GROUNDING PIGTAILS
 DUPLEX OUTLETS
 GFI OUTLETS
 CLASS .050"A" FRP WALL PANELS
 ALTERNATIVE INSULATION
 TEXTURED SHELVES
 SLIDING SHELF TRAY FOR LAPTOP
 BATTERY TRAYS / RACKS
 POWER OFF LIGHT
 PLAN DESK

WIRING OPTION

L&W can handle wiring for crossings and sophisticated control points. With the ability to wire, test, and complete Configuration Management Systems (CMS) if necessary. L&W can also arrange to do crossing surveys, engineering, construction, and commissioning of signal projects along with complete project management.

CASE

DOUBLE HIGH CASE



LW PART NO. **TCSA6X5X2-1**

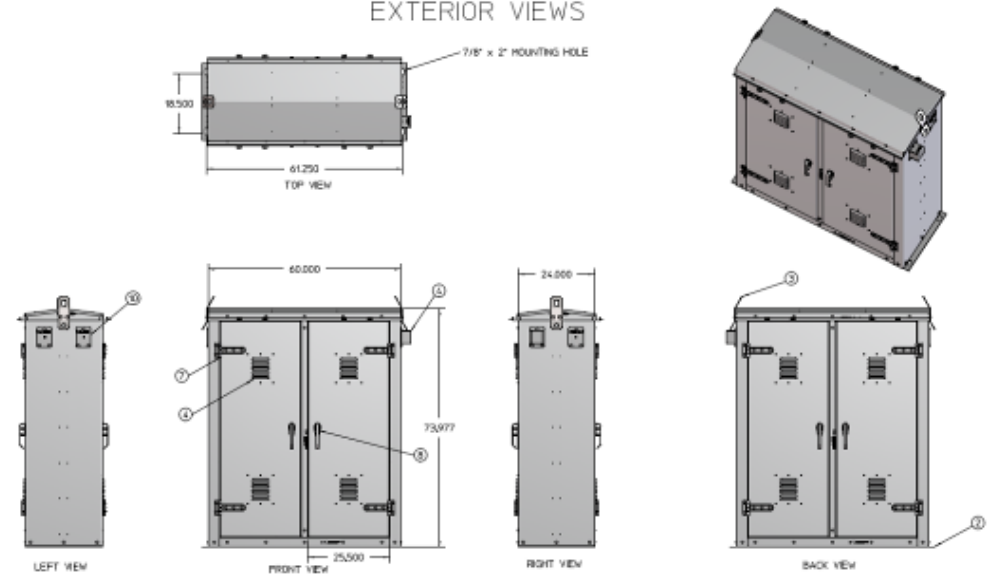
SINGLE HIGH CASE



LW PART NO. **TCSA74X41X32-2**

Shown with 5052-H32 Aluminum with
Exterior Stainless Steel Hardware Standard

EXTERIOR VIEWS



(SINGLE, SINGLE HIGH, DOUBLE, TRIPLE)



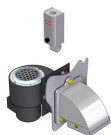
ACCESSORIES

LOCK, TERMINAL WRENCH STYLE ZAMAK
LW PART NO. ZB46023 W/O CHAIN
LW PART NO. ZB46023C W CHAIN



LOCK, TRIANGULAR STYLE ZAMAK W/CHAIN
LW PART NO. ZB46024

VENT FAN BLOWER, THERMOSTAT, CAST HOUSING,
 THRU WALL AERIAL VENT MTG KIT
LW PART NO. 2A51235-3X
LW PART NO. 2A51235-4X (NO THERMOSTAT)
LW PART NO. 2A51238 (THERMOSTAT ONLY)



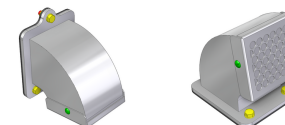
VENT FAN BLOWER W WELDED MTG PLATE FOR
 AERIAL VENT ONLY
LW PART NO. 2A51235-3



AERIAL CABLE OUTLET W/GASKET, AERIAL
 CABLE EYELET, MTG HDWR
LW PART NO. 2A51005-X

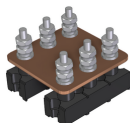


AERIAL CABLE OUTLET W/GASKET,
 SCREEN, FILTER, MTG HDWR
LW PART NO. 2A51005-X1

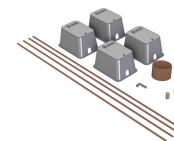


GROUNDING MATERIAL

GROUNDING PLATE COPPER FOR 2EA 3POST
 TERMINALS
LW PART NO. FA23000-X



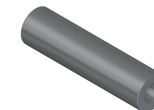
GROUNDING LOOP KIT INCLUDES 4 RODS, 4
 WELL COVERS,
 4 CADWELD, 100' BARE WIRE, AND IGNITOR
LW PART NO. FA900695



GROUND ROD 3/4" ONLY
LW PART NO. FA613400



GROUND ROD DRIVER FITS UP TO 3/4" ROD
LW PART NO. FA901173

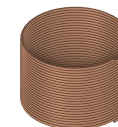


GROUND BAR 5/8" ONLY
LW PART NO. FA5880

CADWELD FOR 5/8" GROUND ROD
LW PART NO. CANX1161L

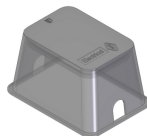


#6 AWG BARE COPPER WIRE (Priced per/FT.
 Std Pkg 315ft)
LW PART NO. DA6614



CADWELD FOR 3/4" GROUND ROD
LW PART NO. CANX1181L

GROUND ROD BOX WELL COVER (RECTANGLE)
LW PART NO. FA900669



ACCESSORIES

POWER OFF LIGHTS

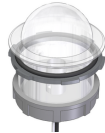
INCANDESCENT POWER OFF LIGHT JEWEL
 TYPE 3" DIA COMPLETE LEXAN CLEAR
LW PART NO. 2A70376 NO BULB
LW PART NO. 2A70374 10V-18W BULB
LW PART NO. 2A70375 10V-25W BULB



3" DIA CLEAR REPLACEMENT LENS
LW PART NO. 2A70373 INCANDESCENT
LW PART NO. 2A70380 LED



LED (Velcorp/GEMS)
 12VDC TWO WIRE - BLACK OUT W/ NO POWER
LW PART NO. 2A70378



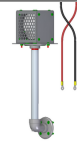
LED MONITORS EITHER 120 / 240VAC,
 OPERATES ON 12VDC, FLASHES ON BATTERY POWER
LW PART NO. 2A70377



LED MONITORS EITHER 120 / 240VAC,
 OPERATES ON 12VDC, FLASHES ON BATTERY POWER W/
 WAGO CONNECTOR
LW PART NO. 2A70379



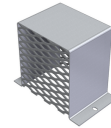
POWER OFF LIGHT 3" DIA CLEAR BI-
 DIRECTIONAL W/LENS GUARD
LW PART NO. 2A1673-X



4" LAMP ASSY W/CLEAR LENS ONLY
LW PART NO. 2A1019C-7X



LENS GUARD - 4 3/8"Wx415/16"H x 3 1/2"D FOR
 4" LAMP
LW PART NO. 2A1670



ACCESSORIES

RUBBER MAT 100% NITRILE RUBBER STATIC
DISSIPATIVE SLIP RESISTANT 33" WIDTH
PRICED LF
LW PART NO. JR53090



DOOR HANDLE MAT COVER STD 10"
long x 5-9/16" x 1/8" NEOPRENE RUBBER
LW PART NO. 2A60602



HEAVY DUTY SHELF WITH SLIDING TRAY KIT
METAL CONSTRUCTION
PAINTED TEXTURE EBONY PAINT
LW PART NO. 2A51183-036X (36" Shelf)
LW PART NO. 2A51183-054X (54" Shelf)



PORTABLE SHELF WORK SURFACE 18.75" WIDE x
12.5" DEEP ALUMINUM CONSTRUCTION POWDER
COATED OFF WHITE
LW PART NO. 2A900694



RETRO FIT GENERATOR PLUG BOX
LW PART NO. 3A901381



**HOUSE/BUNGALOW HEATERS
OPTIONAL SURFACE MOUNT BOX FOR HEATER**

HEATER ONLY 2000/1500W 240/208VAC DAYTON
LW PART NO. 2A70222



SURFACE MT BOX ONLY, F/2A70222 DAYTON
LW PART NO. 2A70223



HEATER ONLY 1500/1125W 240/208VAC MARLEY
LW PART NO. 2A70226



SURFACE MT BOX ONLY, F/2A70226 MARLEY
LW PART NO. 2A70228



HEATER ONLY 4000/3000W 240/208VAC QMARK
LW PART NO. 2A70229



SURFACE MT BOX ONLY, F/2A70229
LW PART NO. 2A70230



ACCESSORIES

EQUIPMENT RACK, RELAY BAR, TIE BARS

19" EQUIPMENT RACK HEAVY DUTY 7GA/12GA STEEL
POWDER COATED WHITE
LW PART NO. 2A900163-19



23" EQUIPMENT RACK HEAVY DUTY 7GA/12GA
STEEL POWDER COATED WHITE
LW PART NO. 2A900164-23



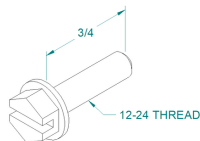
RELAY BAR STEEL POWDER COAT
LW PART NO. 2A900176-19 WHITE
LW PART NO. 2A900176-23 WHITE
LW PART NO. 2A900176-23A61



TIE BAR STEEL POWDER COAT-WHITE
LW PART NO. 2A900069-19
LW PART NO. 2A900069-23



HARDWARE KIT, SCREWS 12-24 THREAD
FORMING
STD PKG OF 50
LW PART NO. 2A901033



DIN RAIL PLATED
LW PART NO. 2A900175-19
LW PART NO. 2A900175-23



BATTERY RACK & CASE

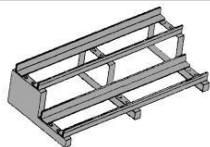
BATTERY TRAY 60"x12" ALUMINUM FRAME 1/2" WOOD
INSERT WITH 1/8" RUBBER COVER
LW PART NO. 2A60603



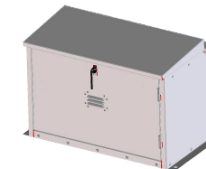
BATTERY TRAY 2 TIER 48"Wx12"D30"H
ALUMINUM FRAME 1/2" WOOD INSERT WITH 1/8"
RUBBER COVER
LW PART NO. 2A60605



TWO -TIER RACK ALUMINUM FRAME
LW PART NO. 2A52455 32"
LW PART NO. 2A52456 52"



ALUMINUM BATTERY BOX
(nominal 40"L x 21"W x 19"H inside area)
REINFORCED FLOOR, INSULATED, EASY
ACCESS LIFT LID AND DOOR FOR EASE AND
SAFER ACCESS TO BATTERY COMPARTMENT
LW PART NO. 0A283618A-LW



**WE ALSO MANUFACTURE:
TERMINAL BOARDS
DISTRIBUTION ENCLOSURES**

Call us at 1-800-852-5587 with your requirement