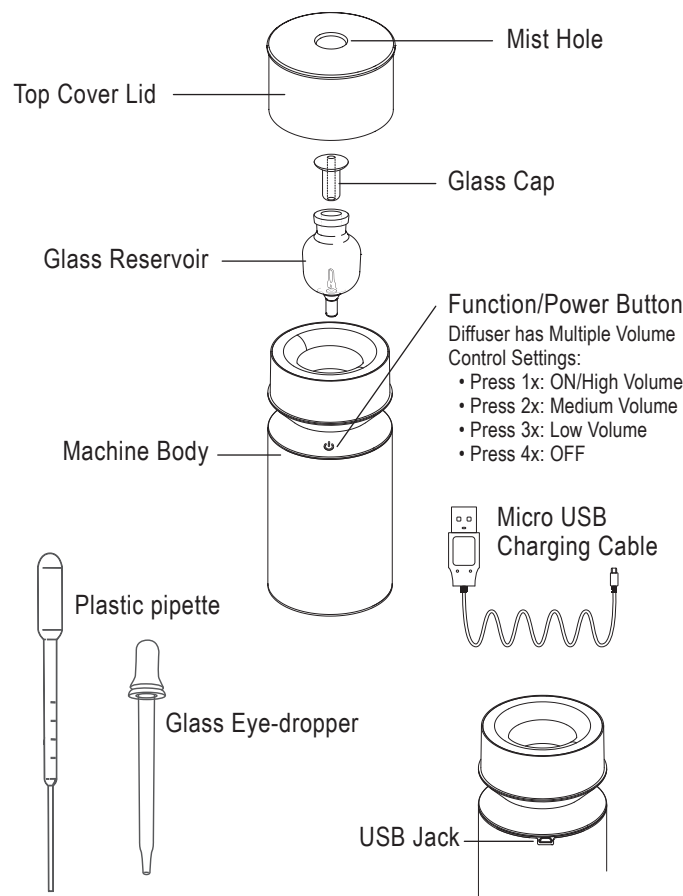


Mobile-Mini
Wireless Rechargeable
Nebulizing Diffuser®

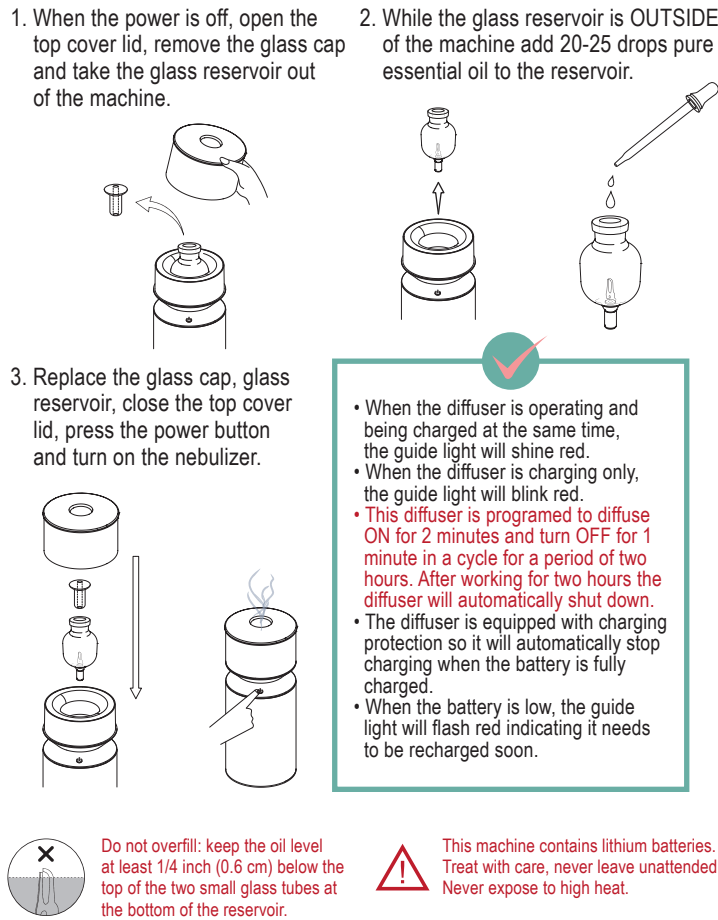


INSTRUCTION MANUAL

Part Names



Operating Methods



Important Guidelines

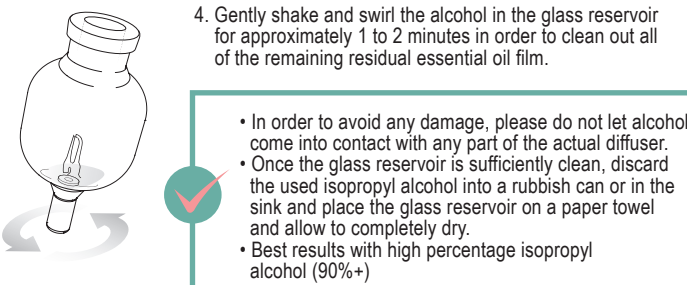
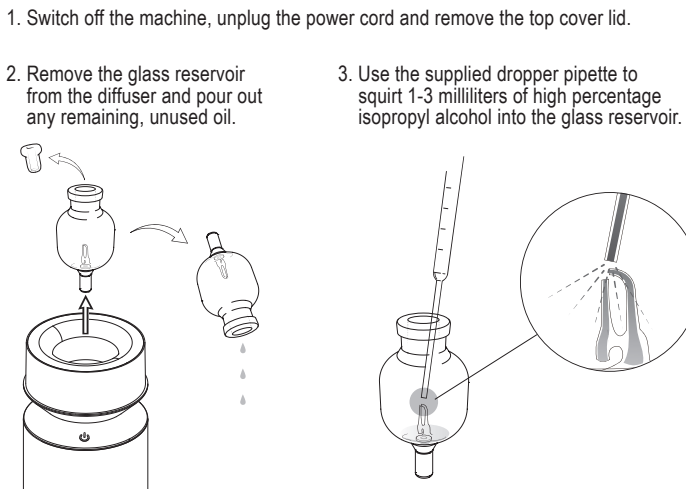
- Product failure or other damage caused by failure to comply with the following precautions will void the free warranty. Please pay special attention.
- Please do not let essential oil or any other liquid drip outside of the glass reservoir and into the pump housing. This can quickly ruin the internal pump.
 - Turn the diffuser off before adding any new oil.
 - This machine is only capable of diffusing pure essential oil, do not use fragrance oils or anything synthetic. Other oils may cause a blockage or could damage the machine components.
 - Please do not use thick essential oils such as those extracted from tree resin like benzoin, myrrh, frankincense, patchouli, vetiver, clove and sandalwood. These oils can dry inside and clog the micro-tubes.
 - Do not use essential oils that contain carrier oils, such as coconut oil, jojoba oil, almond oil and grape seed oil. Also please do not use water.
 - Please add the appropriate amount of essential oil depending on the frequency of use. Do not add too much oil at one time as contact with air will cause the oil to oxidize, become stiff and clog the nozzle.
 - Blockage of the micro-tubes may cause the diffuser to malfunction. Make sure you regularly clean the diffuser glass according to the method described in the instruction manual.
 - In order to avoid damage to the machine do not expose it to direct sunlight, place it close to an air conditioning vent, or near the outlet of heating equipment such as a radiator.
 - In order to avoid electromagnetic interference with other electronic instruments please avoid placing the diffuser close to electronics such as a radio, an automobile electronic key interface or other sensitive computer equipment.
 - Please do not use the diffuser if there is no essential oil in the glass reservoir.

...continue

- If you do not plan to use the machine for a long time, please pour out all remaining oil in the glass reservoir and perform a thorough cleaning. After the glass reservoir is clean and completely dry return it to its original position for storage.
- The strength of the mist and performance of the diffuser can and will differ depending on the kind of essential oil used, varying humidity, barometric pressure, the ambient temperature and in locations with strong ventilation, open windows/doors and/or vaulted ceilings. It is normal to see some discrepancy in performance when the unit is used in different environments.
- Do not move or unnecessarily shake the diffuser during operation and do not remove the glass reservoir while the machine is operating.

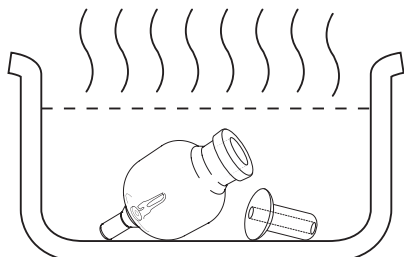
Maintenance

Regular Cleaning: After every 5-6 uses (approximately once a week) or whenever you wish to change a new essential oil scent, please thoroughly clean the product in the following manner:



Deep Cleaning: It is recommended that you clean the glass reservoir once a month in order to ensure product quality and performance.

- Remove the glass reservoir from the diffuser body.
- Prepare a container, boiling hot water and a small amount of dish soap then put the glass reservoir and glass cap in the hot water.



Best results by using boiling hot water.

- Keep the glass reservoir and glass cap in the water for one hour. It is best for the cleaning if the water can be heated up a little periodically.

Precautions

- This machine uses only pure, natural essential oils. Do not use any oil that contains chemical ingredients, synthetic fragrances, solids or other impurities as they may cause damage to the machine.
- Do not use wet hands to insert or unplug the recharging power cord, this could lead to electric shock.
- Do not damage, puncture, twist, crush or vigorously stretch the recharging power cord. Also, do not expose the cord to high temperature. A damaged power cord may cause a short circuit and lead to electric shock, fire.
- Do not expose the machine and the recharging power cord to excessive or improper electrical voltage. Prior to use consult the specs herein and if necessary request assistance from an electrician.
- Do not disassemble, open, or break the seal of the machine for any reason. This could void the warranty. If there is any problem, please contact the seller for service.
- Do not use in high heat, high humidity, or in and around places with open water to avoid potential electric shock.
- The machine should be placed on a flat surface and not on carpets, rugs, or unstable places.
- Do not allow clothing, cloth or other materials such as curtains to block the machine exhaust port. Poor air circulation may lead to the machine malfunctioning, overheating or catching fire.
- If essential oil or other liquids come into contact with the diffuser body make sure to immediately wipe it clean and dry with a clean cloth/rag to any avoid damage.
- Do not use harsh cleaners like those containing chlorine or acids as these could cause off-gassing or chemical destabilization which could be a health hazard.
- Avoid exposing the diffuser to direct sunlight and do not place near an air conditioner, fan or heater.
- The diffuser should be placed out of reach of children. Children should be taught to not play with the machine. This machine is not suitable for children, the elderly and those who lack knowledge of the products correct usage.

Troubleshooting

If the diffuser is not working properly or the product appears faulty, the user can perform the following maintenance:

The machine does not start

- Does the battery have power?
- Is the micro USB charging cable plugged into the base and is it connected properly?
- Properly re-insert the micro USB charging cable into the base

The machine is not spraying or spraying abnormally

- Please confirm whether the glass reservoir is properly and completely installed in the base. Is it loose?
- Is the glass reservoir clean?
- Perform a complete cleaning.
- Use your finger to gently cover the hole in the glass cap to test whether there is air pressure and if it is flowing properly. If there is no air pressure, please perform a cleaning and re-install the glass reservoir snugly into the diffuser body.

Parameters

Size	(D)68 x (H)160MM
Input/Output Power	AC 100-240V 50/60Hz 5.0V 1A
Weight	437G
Capacity	2ML
Power cord length	100CM
Power	3W
Raw materials	PP/Glass/Aluminium Alloy
Accessories	Micro USB Charging Cable/Dropper Pipette /Instruction Manual

In the case the product has been properly used, but experiences normal product failure, the Company shall provide a one-year (from the date of purchase) free parts and services warranty.

The Company shall not provide any warranty for instances meeting the following situations:

- Malfunctions that occur after one year from the date of purchase.
- Malfunctions due to damage caused by letting liquids into the machine body.
- Deliberately altering the purchase date and other information.
- Malfunctions caused by fire, earthquake, storm, flood, pollution, disaster, war or other external factors.
- Malfunctions caused by disassembling, modifying or repairing on your own.
- Normal wear of LED lights, accessories and other consumables.
- Malfunctions caused by failure to use specific essential oil or the unit as indicated.

Upon receipt of your diffuser, please register your warranty at:

organicaromas.com/pages/warranty

- Organic Aromas will only guarantee those units that have properly registered their warranty.
- In the case the product has been properly used, but experiences normal product failure, the company shall provide a one-year (from the date of purchase) free parts and services warranty.
- In the event of product failure, please prepare the product, accessories and original order information and present it directly to Organic Aromas.



Made In Taiwan

For all questions, comments or to report a problem or issue please contact www.OrganicAromas.com or email to info@organicaromas.com