

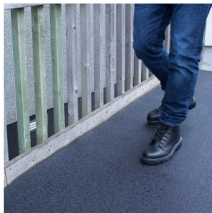


GripGuard

Grit surface matting with outstanding anti-slip properties



- Mineral coated matting creates an abrasive 'super-grip' standing surface that sits flush to the floor.
- Effectively reduces the risk of slipping in wet or oily conditions, where fluid spillage is prevalent.
- Durable and oil-resilient, ideal for internal industrial use, as well as other workplace environments.
- Easy installation making this the ideal product for those needing a rapid solution to floor safety.
- Low profile negates creating a trip potential.



**Fire and Safety
Centre**

Available From:

Fire and Safety Centre

15 Atkinsons Way, Foxhills Industrial Estate

Scunthorpe, North Lincolnshire, DN15 8QJ

Tel: 01724 281044 **Web:** www.fireandsafetycentre.co.uk

Email: sales@fireandsafetycentre.co.uk

Parts

Part Number	Size	Colour	Weight (kg)
GG010002	0.9 m x 1.5 m	Black	3.51
GG010003	0.9 m x 6 m	Black	14
GG010003C	0.9 m x per linear metre	Black	2.33

Technical Specifications

Material	Mineral (Aluminium Oxide) Coating with vinyl backing
Surface Finish	Grit
Product Height	2.25 ± 0.2 mm
Product Weight	2.6 kg / m ² ± 0.15
Min. Operating Temperature	0°C
Max. Operating Temperature	+40°C
Environmental Resistance	Suitable for wet and dry environments, indoors or outdoors
Typical Applications	Walkways
COO (Country of Origin)	TW

Additional Information



Grippguard Datasheet DIN51130



**Fire and Safety
Centre**

Available From:

Fire and Safety Centre
15 Atkinsons Way, Foxhills Industrial Estate
Scunthorpe, North Lincolnshire, DN15 8QJ
Tel: 01724 281044 **Web:** www.fireandsafetycentre.co.uk
Email: sales@fireandsafetycentre.co.uk