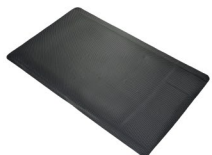
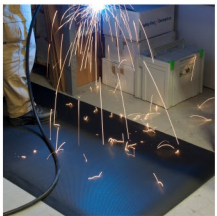
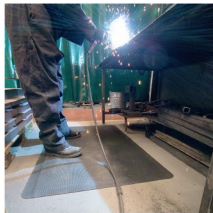
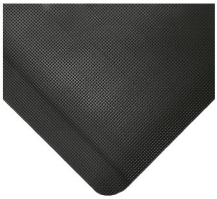


Diamond Tread

Fatigue relief for welding professionals



- Welders need relief from standing like any other professional.
- The heavy-duty top surface is both resilient and fire tested, whilst the soft foam underlayer provides cushioning for the feet.
- Ideal for welding bays and demanding industrial use.
- Flame retardant top surface (tested to BS EN 13501-1) – so weld sparks aren't an issue.
- Loose lay – can be moved easily.
- Bevelled edges help avoid creating a trip risk.



**Fire and Safety
Centre**

Available From:

Fire and Safety Centre

15 Atkinsons Way, Foxhills Industrial Estate

Scunthorpe, North Lincolnshire, DN15 8QJ

Tel: 01724 281044 **Web:** www.fireandsafetycentre.co.uk

Email: sales@fireandsafetycentre.co.uk

Parts

Part Number	Size	Colour	Weight (kg)
DTB010001	0.6 m x 0.9 m	Black	3.7
DTB010002	0.9 m x 1.5 m	Black	9.32
DTB010003	0.9 m x 18.3 m	Black	113
DTB010003C	0.9 m x per linear metre	Black	6.5

Technical Specifications

Material	Vinyl top surface with PVC foam backing (fusion bonded, not glued)
Surface Finish	Diamond pattern
Product Height	15 mm
Roll Length	18.3 m
Min. Operating Temperature	0°C
Max. Operating Temperature	+55°C
Environmental Resistance	Suitable for dry indoor environments. Will withstand welding splatter and spillages of other hot materials.
Typical Applications	Welding bays
Installation Method	Loose lay
Cleaning Method	Brush/mop the top surface
Fire Tested to	BS EN 13501-1 Class CfI - s1
COO (Country of Origin)	CN

Additional Information



Diamond Tread BS EN 13501 Fire Test



Diamond Tread EN ISO 9239 Fire Test



Diamond Tread EN ISO 11925 Fire Test



**Fire and Safety
Centre**

Available From:

Fire and Safety Centre

15 Atkinsons Way, Foxhills Industrial Estate

Scunthorpe, North Lincolnshire, DN15 8QJ

Tel: 01724 281044 **Web:** www.fireandsafetycentre.co.uk

Email: sales@fireandsafetycentre.co.uk