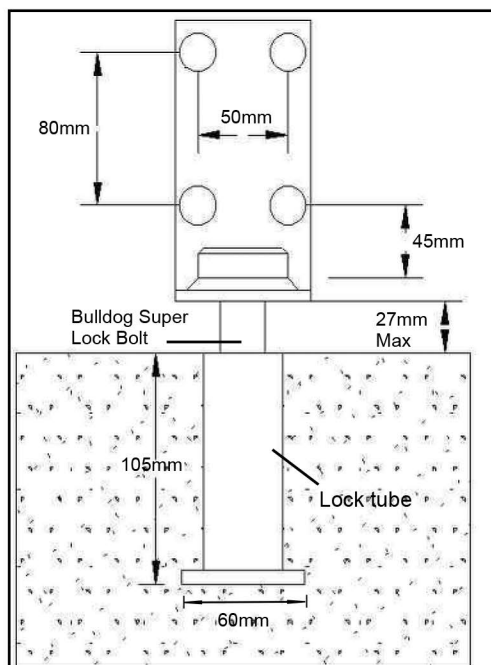
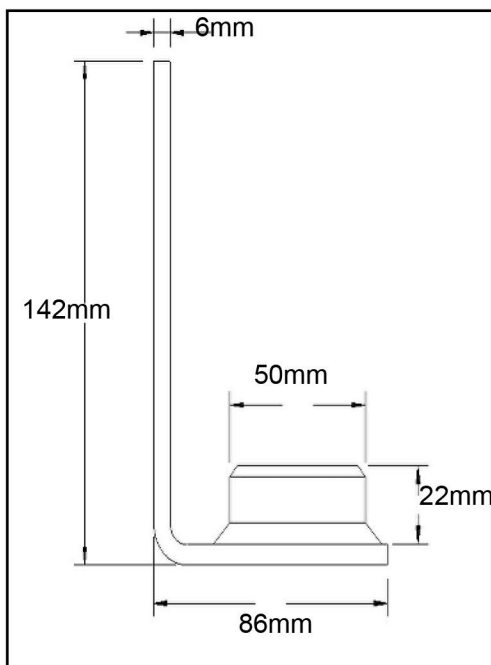


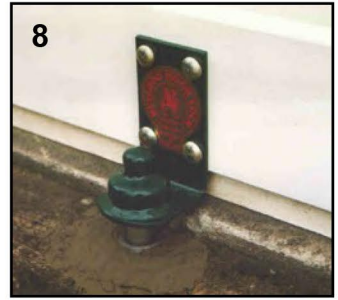
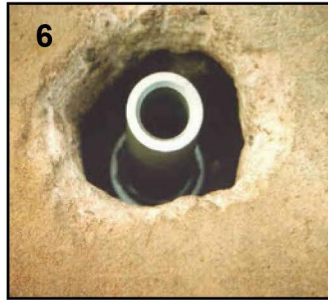
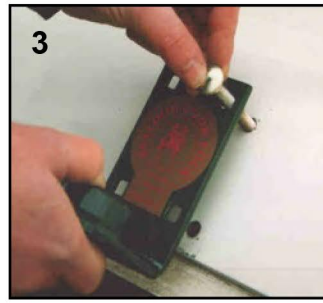
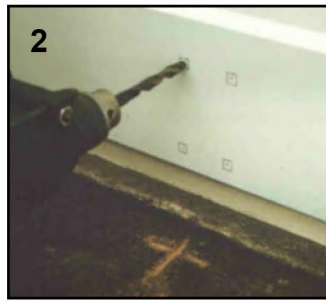
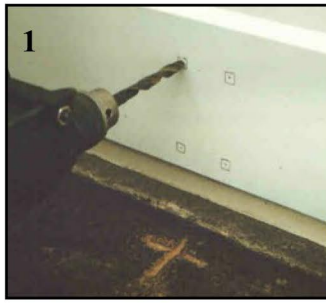
GD400 Garage Door Lock Data Sheet



Features:

- Bolt on 'L' shaped bracket to fit to either outside or inside of garage door.
- Reinforcing plate supplied in kit to strengthen door. 75mm x 110mm, 6mm thick.
- Uses Bulldog Super Lock Bolt, no padlocks. See separate sheet.
- M10 x 75mm coach bolts supplied for fitting to metal or wooden doors.
- Lock tube fits flush with ground, no protruding parts.
- When locked, the garage door is physically held to the ground making prising of the door very difficult.
- Dust caps provided to prevent dirt and dust ingress into lock and lock tube.
- Finished in a highly visible yellow powder coating.
- Also available Roller Shutter Door Lock version GR500.
- Weight =2.3kg

GD400 Garage Door Lock Fitting Instructions



When positioning, take care to check for buried cables or pipes.

1. First, fit the solid steel angle bracket through which the lock bolt is designed to be slotted. The optimum position is at the midpoint of the bottom of the door, with the bracket being held no more than 25mm above the ground for the marking of the four drill hole positions in pencil. This gap will allow the full engagement of the lock bolt.
2. Centre punch the hole centres and drill clearance holes through the door for the fixing bolts.
3. Using 'blind' coach bolts, fix angle bracket to the door.
4. A reinforcing plate is used at the rear of the door, the coach bolts being secured using the washers and nyloc nuts supplied in the kit.
5. An area 150mm square and 150mm deep should be drilled and chiselled from the concrete garage floor or drive directly beneath the angle bracket. You may wish to increase the hole size particularly in looser tarmac to create a larger retaining ball of concrete.
6. A base of gravel, topped with sand, should be laid at the bottom of the hole and tamped down until compacted. This provides support for the base of the lock bolt receiving ground tube during the final stages of installation.
7. The ground tube is now surrounded in concrete. Use the Super Lock Bolt to accurately position the ground tube whilst concrete sets. Fit the yellow dust cap to prevent concrete and dirt damaging the lock.
8. Once the concrete has set, the door can be opened and a final trowelling off will ensure that the area blends in with the surrounding floor slab. A dust cap is provided to prevent the ingress of dirt into the lock, and should be fitted at all times.

We have taken every care in the design and manufacture of this security device and we believe that it is an effective deterrent. However we cannot guarantee that it will resist the efforts of the most determined thief, and as such we do not accept any liability for loss or damage caused by theft, vandalism or other illegal activity against property to which this device is fitted.

Lock Lubrication.

IMPORTANT - To ensure free movement of the lock, spray lock mechanism & ball bearings with WD40 (or equivalent) minimum every four months.