



Ford Full Size Truck Spoiler (1964-1996)

Ford Ranger Spoiler (1983-2005)

Installation Instructions



- 1. Bolt Brackets to spoiler blade with flanged button head bolts (1/4-20)**



- 2. Line up spoiler assembly on tailgate. Be sure to check blade clearance over bed sides and center assembly side to side.**



- 3. Clamp or hold in position. Double check spoiler is in desired position and mark holes to drill for rivnut install. Rivnuts require use of 25/64" drill bit (not included).**



Be sure to check blade clearance over bed sides.

- 4. Install included 1/4-20 rivnuts with a rivnut tool (not included).**

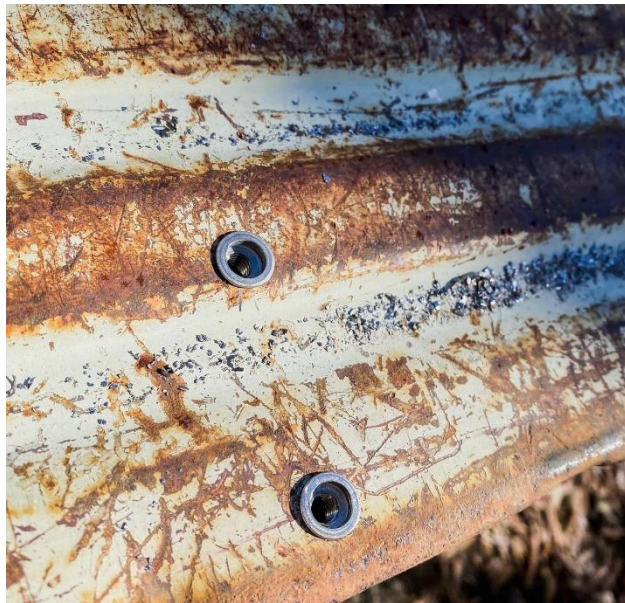


Figure 1: Rivnuts installed in tailgate. For this spoiler the rivnuts need to be on the raised stamping on the tailgate.



NOTE: 1993-2005 Ford Rangers will use included spacer below bracket slot to mount to lower face of tailgate stamping. To keep factory tailgate panel removable for accessing tailgate latch components drill holes for rivnuts in both removable panel and tailgate. Remove tailgate panel and install rivnuts to just the tailgate. Reinstall panel over tailgate face and place spacer between removable tailgate face and bracket to bolt assembly together.





- 5. Paint and bodywork on spoiler blade can be completed at this time. It can be done before install, but installer must be careful of scratching paint/powder coat on blade if done beforehand.**
- 6. Once spoiler blade is painted or powder coated the brackets can be bolted to the blade with the included flanged buttonhead bolts. Spoiler brackets will bolt to installed rivnuts with included $\frac{1}{4}$ -20 socket cap bolts.**



Completed Install



1964-72 Tailgate



1973-79 Tailgate



1987-96 Tailgate:

Note: 1987-96 tailgates will need the holes for the rivnuts drilled through the factory bolt on metal cover on inside face of tailgate as well. Rivnuts will be installed on tailgate itself with stamped sheet metal cover removed. Cover is bolted back into place before bolting spoiler assembly to tailgate.