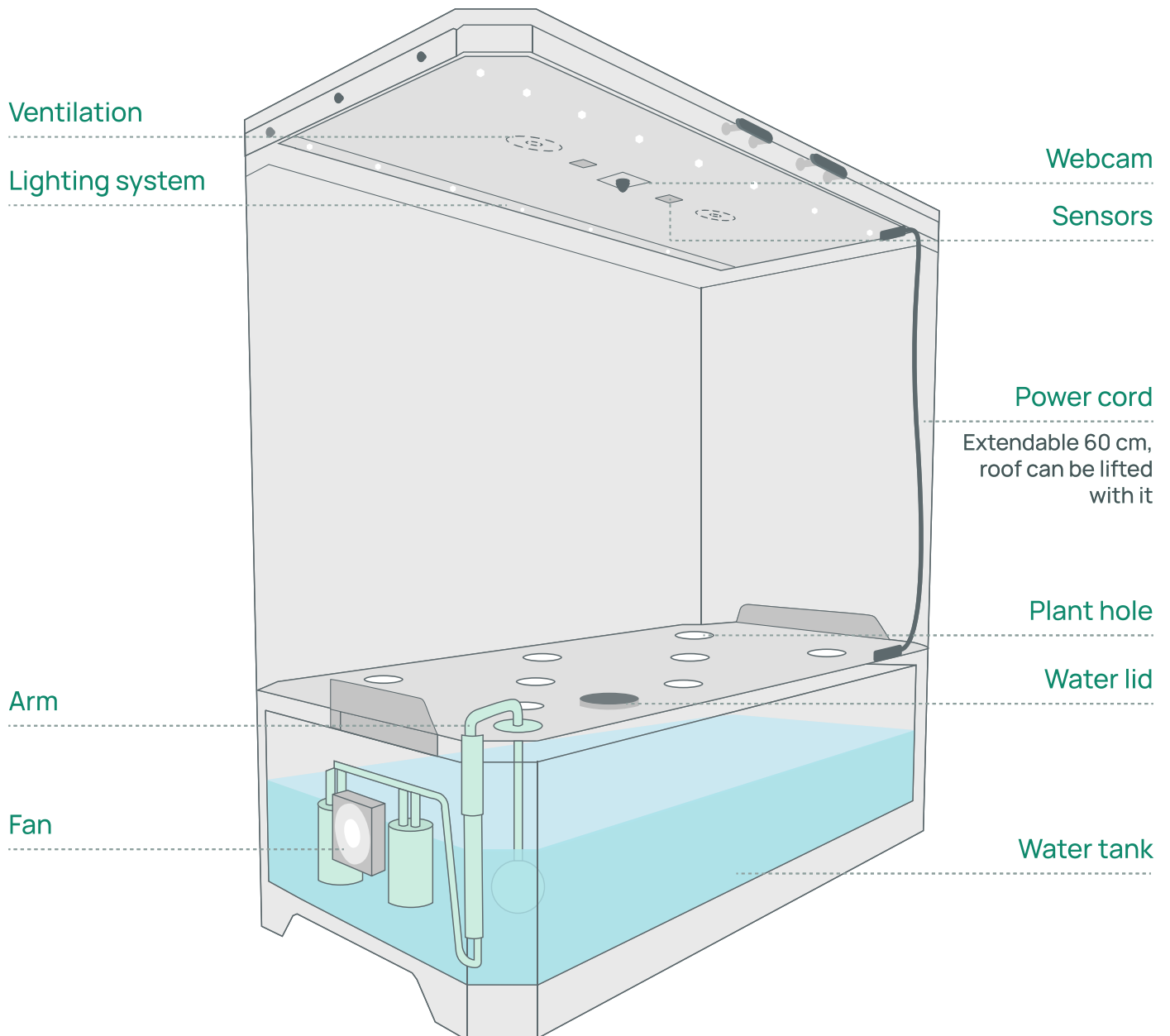




User guide



Getting to know about your Plaant unit

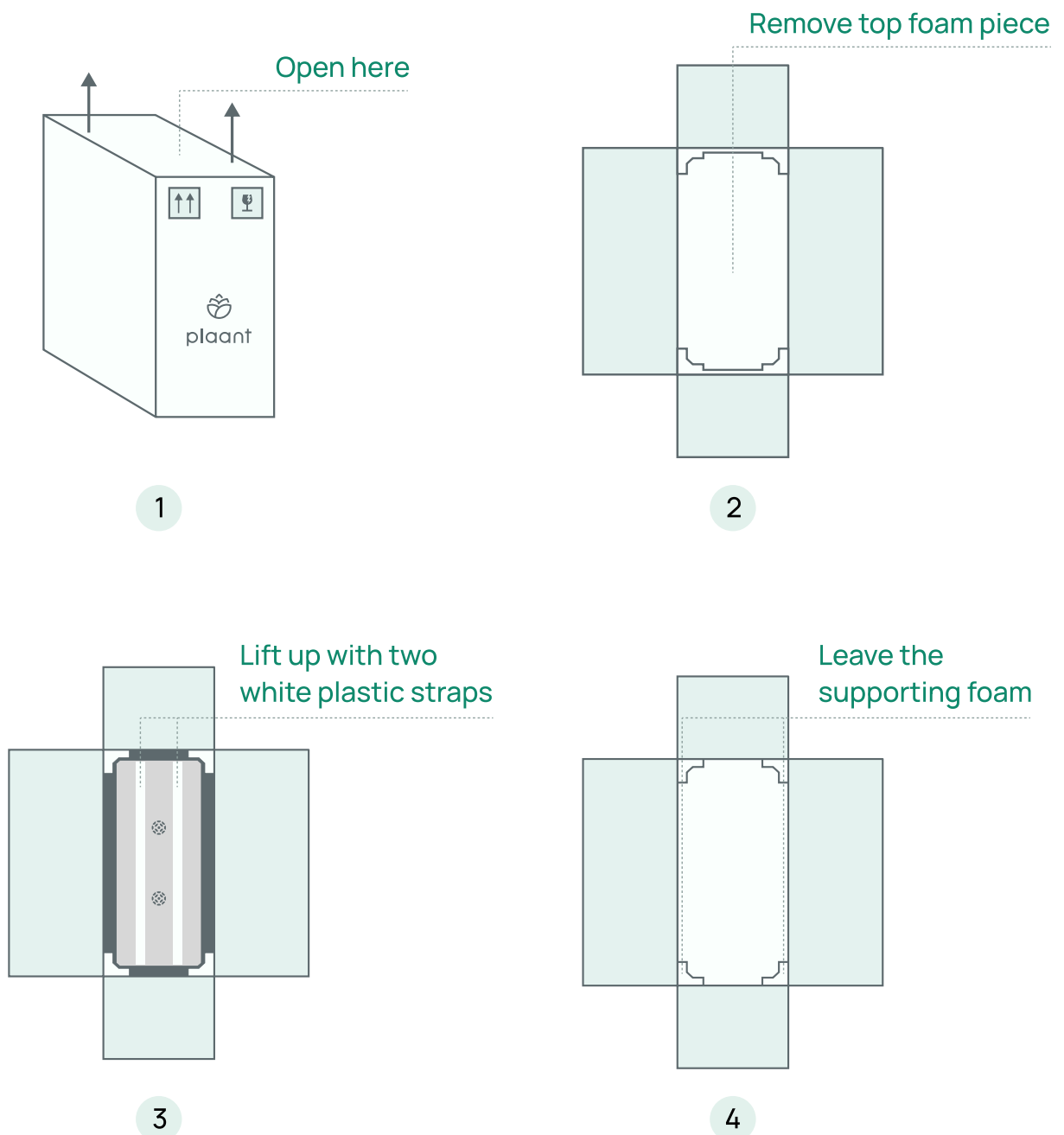


Important: please follow these steps before unpacking your **Plaant**

Make sure the unit has no visible damage before plugging it in and filling the tank up with water. If you have questions or concerns please contact us at hello@plaant.com.

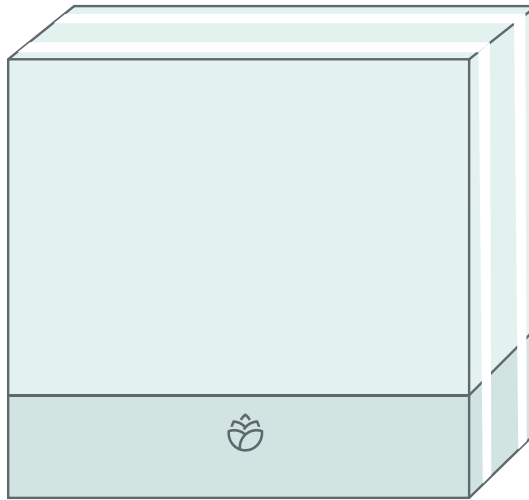
1. Open the package

Remove the top foam piece and then lift up the unit by lifting it by the two white plastic straps. Leave the supporting foam in the box.



2. Check for damages

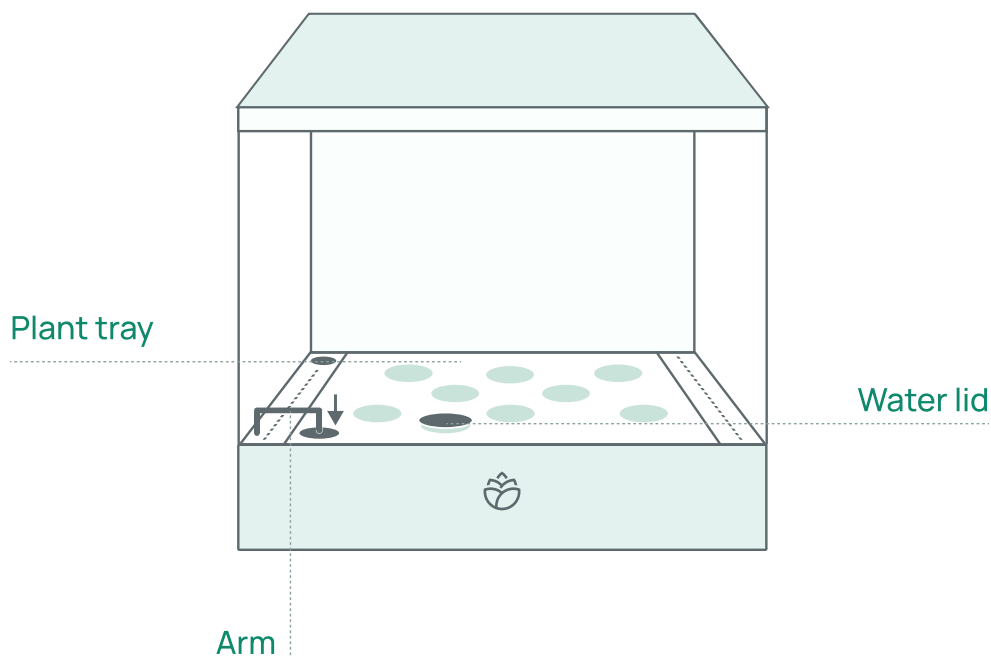
Check the exterior for damages, primarily the glass and the stainless steel. If the foam pieces are intact this is unlikely.



Picture item 2

3. Place and plug

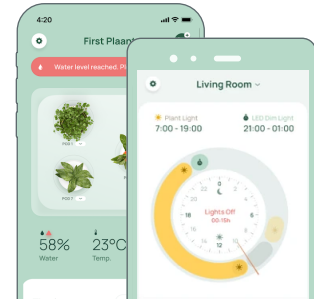
- Make sure that the plant tray inside the unit is in place on the water tank
- Check that the water lid is in place on the plant tray
- Verify that the arm is in place correctly in the plant tray hole



Picture item 3

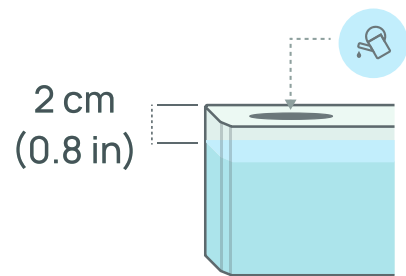
4. Prepare the unit

- Download the Plaant app on your Apple iOS or Android smartphone from the stores.



Picture item 4

- Follow the instructions in the app to onboard your unit
- Take out the water lid, and fill the unit with 8 liters of water. The water should be filled up to about 2 cm (0.8 in) from the top



Picture item 5

- If the onboarding is successful, review the App's dashboard to see if readings for the temperature, humidity and water level are showing. And also see if there's an image in the timelapse section. If all these check out, you can finally remove the plastic strips and proceed to use your Plaant and start planting the pods. For help with using Plaant, download the user guide found in the footer section of Plaant.com

5. Start growing!

Select which plants you want to grow from your starter kit. In the App select the correct environment based on your selection.

Free starter kits:

Scandinavian

Lettuce, coriander, parsley and pak choi

Mediterranean

Basil, coriander, mint and chili

Fruits

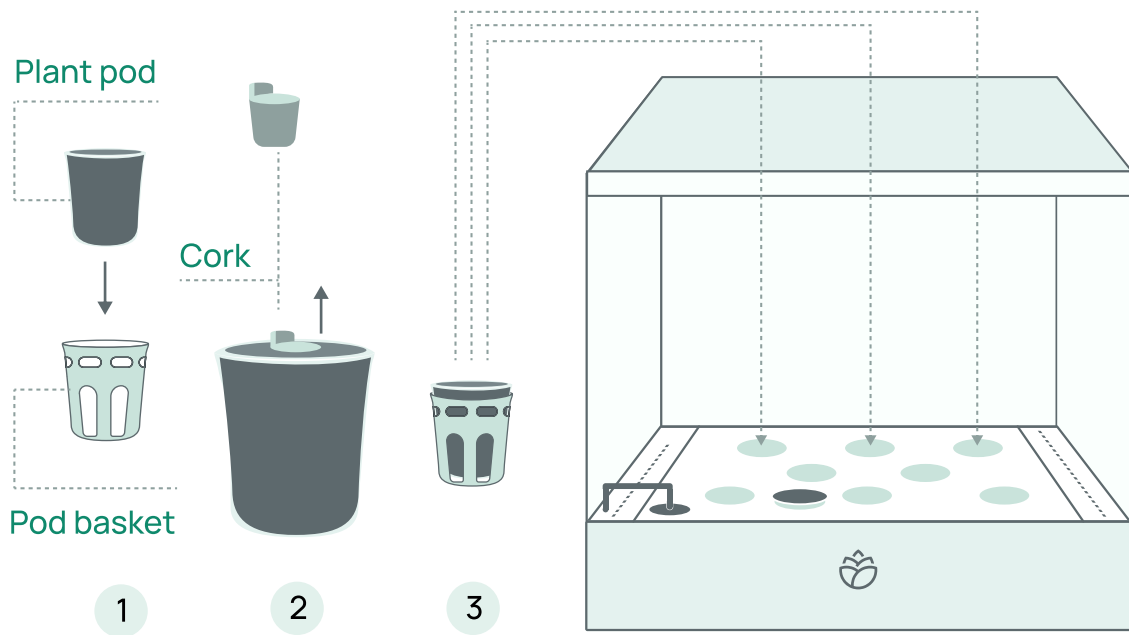
Mini tomatoes, chili and wild strawberries

Flowers

Lavender, pansy, plumed cockscomb and busy lizzie

To start growing plants in the unit:

- Put the pods in the pod baskets and remove the corks. Do not push the pod to the bottom of the pod basket, please leave some space
- Place the pods in the Plaant unit
- Update the app with the pods you planted and select the appropriate scenario



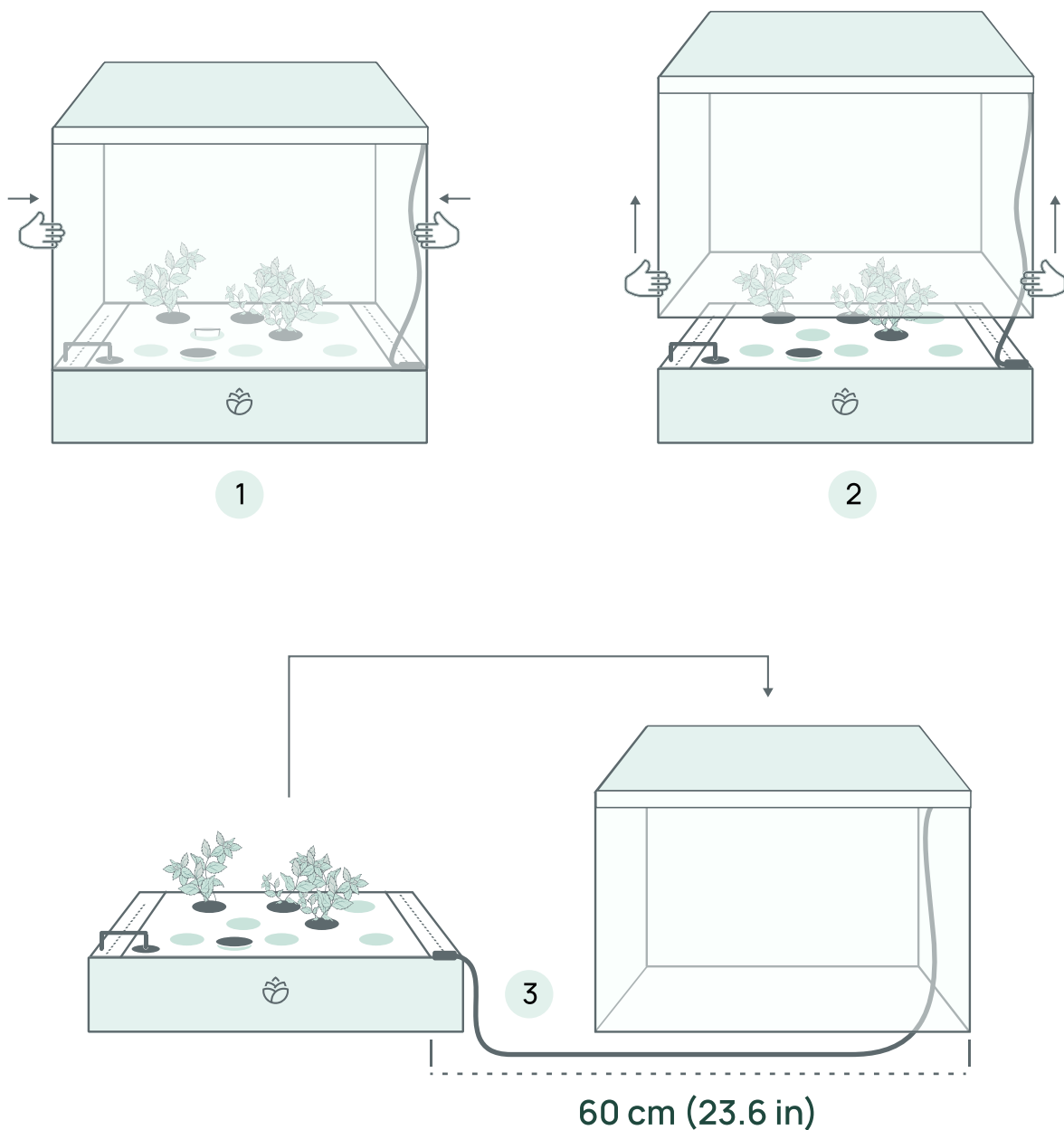
Picture item 6

- Go to the app's "Lights" screen and select when the lights should be turned on.

Growing hydroponically in Plaant is faster and more effortless than traditional farming – but it still takes some time. Sprouting can take between 1 and 2 weeks before you see results. Most plants take between 6 and 8 weeks to reach maturity for harvest.

6. Useful information

To clean your Plaant or to trim your plants, you may want to lift up the glass part of the unit. To do so, lift the glass straight upwards with both hands on the short sides of the glass part. You must put the glass right next to the base, since there is a cable that is attached to both the glass and the base part of the unit that is only 60cm long.



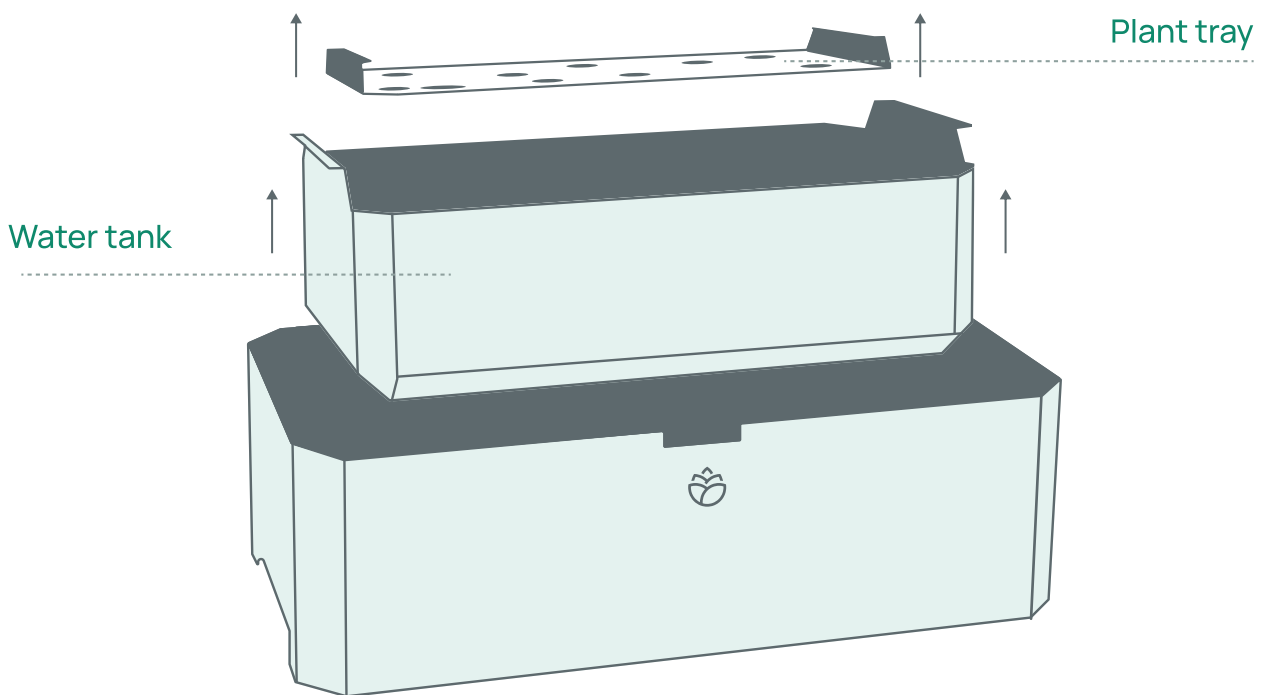
Picture item 7

Cleaning your Plaant

To clean your water tank first follow steps 1 to 3 (picture item 9)

- Remove the plant tray
- Take out the water tank

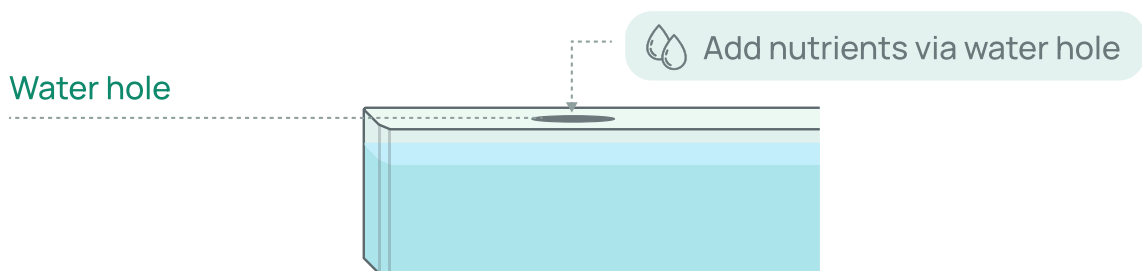
You can clean your water tank in your dishwasher, and we recommend to do so once or twice a year. If you see algae in the tank please clean immediately.



Picture item 8

Adding more nutrients

Every time you refill the Plaant unit with water, add 2 ml of nutrients in its capsule per every 1 liter of water you fill it with. You do not need to be exact.



Picture item 9

7. How to recycle

This appliance may not be treated as regular household waste. Management of WEEE (Waste Electrical and Electronic Equipment) is applicable in member states of the European Union and other European countries with individual national policies on the management of WEEE. If you need more information on the collection, reuse and recycling systems, please contact your local or regional waste administration facility.

8. Technical data

UK, EU and Australian Model	220-240V, 50Hz, 0.75A
North American Model:	115V, 60Hz, 1.5A
Electric class insulation:	Class III
IP Code:	2 3

9. Information



© 2022 Smartbloom AB. All rights reserved.

Birger Jarlsgatan 57C 113 56 Stockholm Sweden

Social media: @getplaat    

Email: hello@plaat.com

10. Warnings

- To reduce the risk of electric shock, the Plaant comes with specific plugs and power adapters, do not change or replace these items in any way.
- Always unplug the Plaant unit from electrical outlets when not in use
- Use the Plaant for only intended uses described in the provided instructions/manual. Never use attachments not recommended by the Plaant.
- Close supervision is necessary when Plaant is used by or near children, invalids, or disabled persons.
- Never operate Plaant if it has a damaged power adapter or plug/cord, if it is not working properly, if it has been dropped and damaged, or dropped in water. If any of these conditions occur/exist, contact hello@plaant.com for instructions.
- Keep the cord away from heated surfaces
- Never operate furnishing with air openings blocked. Keep air openings free of lint, hair, and the like.
- Never drop or insert any object into any electrical openings.
- Do not use outdoors.
- Do not operate where aerosol (spray) products are being used or where oxygen is being administered.
- Do not touch moving parts or hot parts such as pumps, bulbs, reflective surfaces, and the like.
- To disconnect, remove the plug from the outlet.
- Do not place or submerge base, cord, plug, or LEDs in water or other liquid to clean it.
- Do not allow water to contact LEDs.
- Use only approved and supplied parts and accessories. Use of any other kind of accessory is not recommended. Replacement parts can be ordered from www.plaant.com.
- Do not use Plaant for other than intended purposes.
- This product is intended for household and residential use only. This product is not approved for commercial applications.
- Read and follow all important notices on the Plaant and in the accompanying literature.
- If the supply cord is damaged, it must be replaced by the manufacturer, its service agent, or similarly qualified technician in order to avoid a hazard.
- Electrical wiring must be in accordance with local regulations.
- This appliance is not intended for use by persons (including children) with reduced physical, sensory or mental capabilities, or lack of experience and knowledge, unless they have been given supervision or instruction concerning use of appliance by a person responsible for their safety.
- Children should be supervised to ensure they do not play with the appliance.
- To avoid electrical shock do not open the electronics box or touch electrical components.