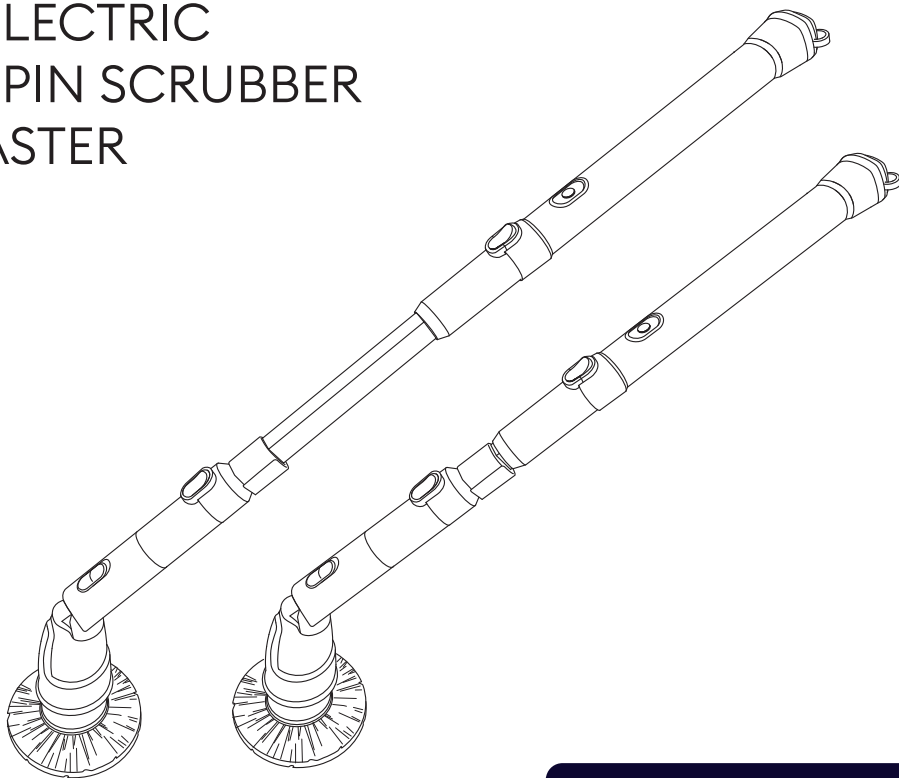




PLEASE READ AND SAVE
THESE INSTRUCTIONS

INSTRUCTION MANUAL

ELECTRIC
SPIN SCRUBBER
ASTER



**QUESTIONS OR
CONCERNS?**

PLEASE CONTACT US

Find Us Online

Search for @GenianiProducts • #Geniani on social media for wellness tips, special deals, giveaways, inspiration, and more.

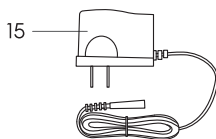
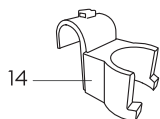
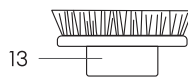
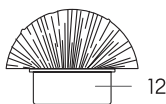
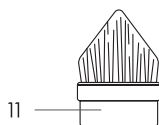
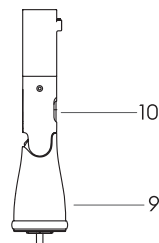
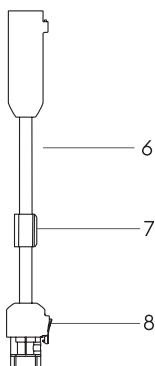
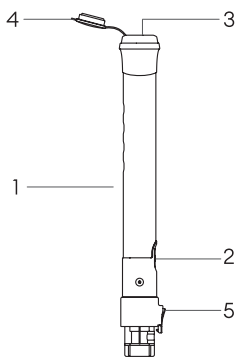
1 (833) 780-5026

Mon-Fri, 9:00 am - 5:00 pm PST/PDT
or at info@geniani.com

CONTENTS

Parts Included	3
Safety Information	4
Warnings	6
Product Assembly Methods	8
Charging Mode	12
Brushes Using Tips	13
Cleaning and Storage Instructions	14
Troubleshooting	15
FCC Statement	16
FAQ	17
Warranty	19
Specifications	21
Customer Support	22

PARTS INCLUDED



1. Main Handle
2. Power Button
3. Charging Port and Indicator Light
4. Charging Cover
5. Bottom Extension Release Button
6. Extension Handle
7. Extendable Handle Switch
8. Top Extension Release Button

9. Scrubber Head
10. Brush Head Angle Adjust Button
11. Corner Brush
12. Dome Brush
13. Large Flat Brush
14. Hook
15. Charging Adapter

SAFETY INFORMATION

Please read this user manual carefully before operating this appliance.

Please use it in accordance with the intended use. To avoid unnecessary damage caused by incorrect use, make sure to read the operating instructions carefully.

Not following the instructions, or misuse, may result in serious injury and even death!

Stop using immediately if the adapter, cord, or battery is damaged!

Contact the Customer Support for more information.

Caution!

When using electrical appliances, basic safety precautions should always be followed, including:

1. Store this product out of reach of children or pets. Adult supervision will be required if this device is used by children.
2. If any damage is done to the charging cord, only the manufacturer, or certified qualified person can replace it, as to avoid any hazard to the device and its user.
3. Do not place the battery in water or other liquid, since there is a risk of electric shock. Do not try to charge the battery if found wet or showing signs of corrosive deterioration.

SAFETY INFORMATION

4. Pressing the brush head too hard will automatically trigger the safety stop. The maximum applied force to the spin scrubber is about 40 lbs.
5. Do not set the battery on fire since there is the risk of explosion.
6. Do not try to charge other products with this charger.
7. Do not try to charge this device using other types of chargers.
8. Do not charge in wet or damp conditions.
9. Ideally, you shouldn't charge the device if the room temperature is below 40°F (5°C) or above 105°F (40°C).
10. Stop using the adaptor if any physical damage has been done to it. For any reason whatsoever, it is forbidden to disassemble the adaptor.
11. Do not yank, or pull on the cord to disconnect. Do not carry the charger by the cord.
12. Do not use the device in high temperatures. Do not store the device in hot environments.



WARNINGS

Applying too much pressure on the rotating brush head will trigger the auto-shutdown safety function. If done repeatedly, it may potentially damage critical parts of the cleaning device!



Do not touch the AC adapter and pull out the DC cord with wet hands. It may lead to electrical shock and fire.



Keep out of reach of children and pets while using or storing. Not complying to these regulations may result in serious injury.



Do not touch the turntable when the product is in operation. Not complying to these regulations may result in serious injury.



If you hear strange sounds, see smoke, or sense scorched smell, please stop usage immediately! Contact Seller Service Center for more information.



WARNINGS



When installing the telescopic handle, please be careful where you place your fingers to avoid serious injury.



The adapter must be original.
Avoid abnormal heating and fire. Not complying to these regulations may result in serious injury.



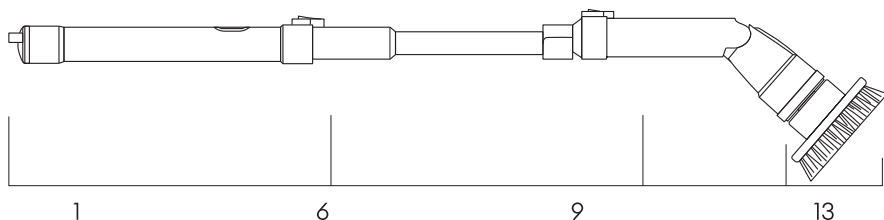
Use the large flat brush with care, as not to damage the surface being cleaned.

PRODUCT ASSEMBLY METHODS

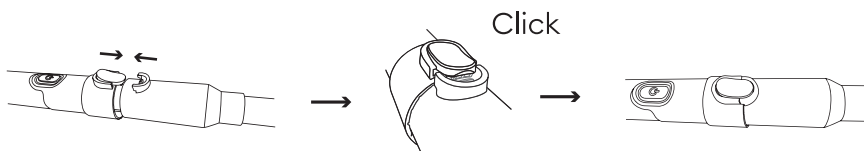
NOTE: Before assembling any component of this product, make sure the unit is turned off.

Assembly with Extendable Handle

Assembly finished, as shown in the picture.



1. Connect the Main Handle to the Extendable Handle until you hear a “CLICK”.



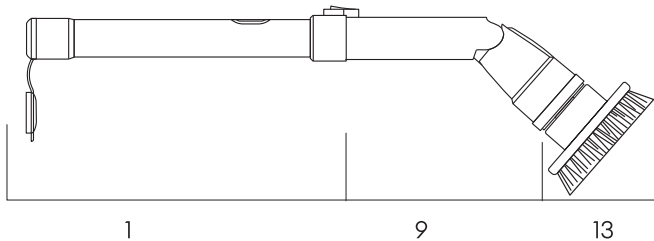
2. Next, connect the Scrubber Head to the Extendable Handle until you hear a “CLICK”.



PRODUCT ASSEMBLY METHODS

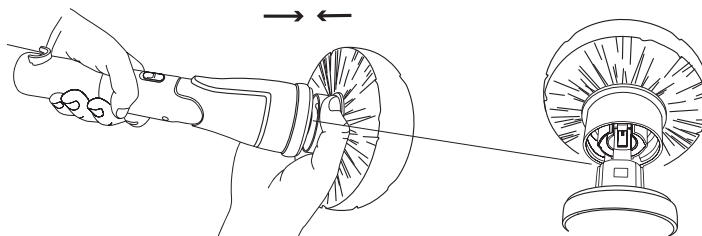
Assembly without Extendable Handle

Connect the Main Handle to the Scrubber Head until you hear a “CLICK”. As the following picture shows.



Brush Head Assembly

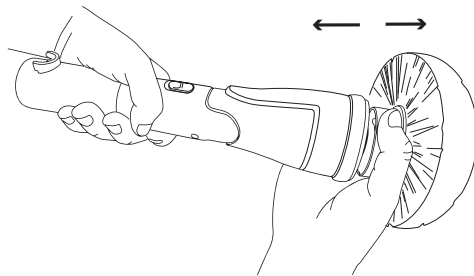
Firmly hold the Scrubber Head with one hand and then press the selected brush on until secured.



PRODUCT ASSEMBLY METHODS

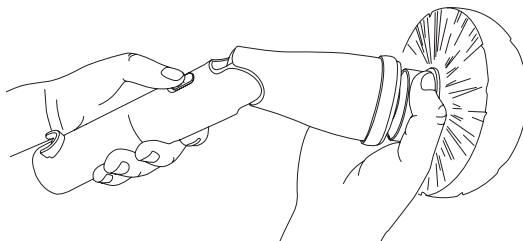
How to pull out the Brush Head

Hold the connection part of the Brush Head and pull out vertically.



How to adjust the angle of Brush Head

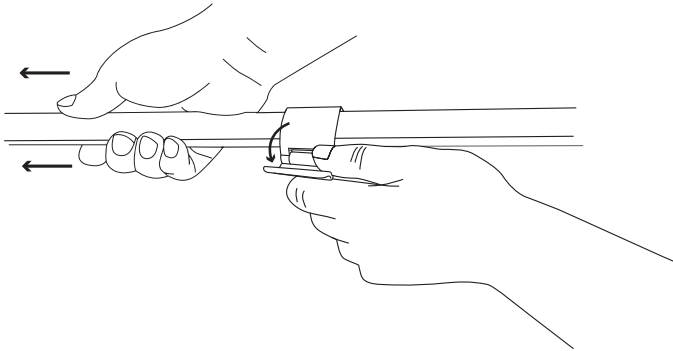
Press the button to adjust the Brush Head at 0°, 45°, 90° degrees.



PRODUCT ASSEMBLY METHODS

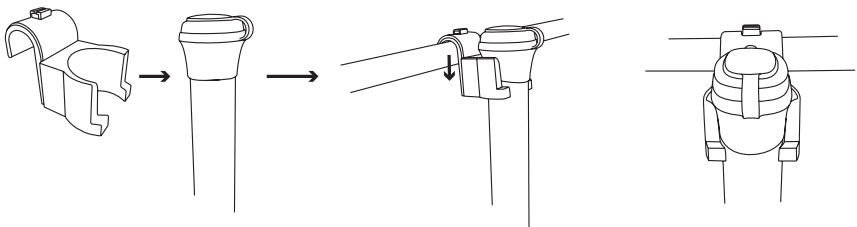
How to use the Extendable Handle

1. Push the switch in the direction of the arrow.
2. Push the switch with one hand and pull the extendable handle out until it reaches your required length.
3. You can select different lengths by pulling the extendable handle to a different position on the grooves.



How to use the Hanging Hook

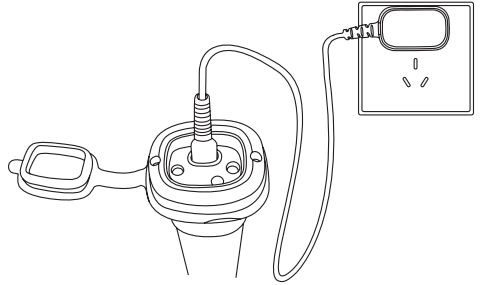
You could install the hook into a bar or rod to hang the power scrubber.



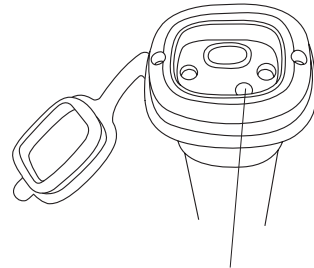
CHARGING MODE

Open silicone Charging Cover and insert adapter for charging. Next, plug adapter into electrical outlet.

Normal charging time is 3.5-4 hours. The first charge may take a bit longer.



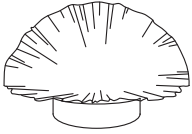
- a. Green Light - Fully charged
- b. Red Light - Charging



a. b.

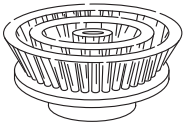
NOTE: Please close the Charging Cover after charging to avoid short-circuit caused by water.

BRUSHES USING TIPS



Dome Brush:

Round Brush is perfect as a concave cleaning brush for shower, tub, bathtub, sink, baseboard or toilet.



Large Flat Brush:

Large Flat Brush is used to clean large flat surface areas, such as hard floor, tile, wall, door, window, glass, counter, patio furniture, pool, soap scum, grim, stove, carpet, ceramic.



Corner Brush:

Corner Brush is great for cleaning tile grout, edges, ornments, cranny and tight places.

TIP: If you want to buy more replacement brush heads, please contact us at info@geniani.com or at **1 (833) 780-5026**.

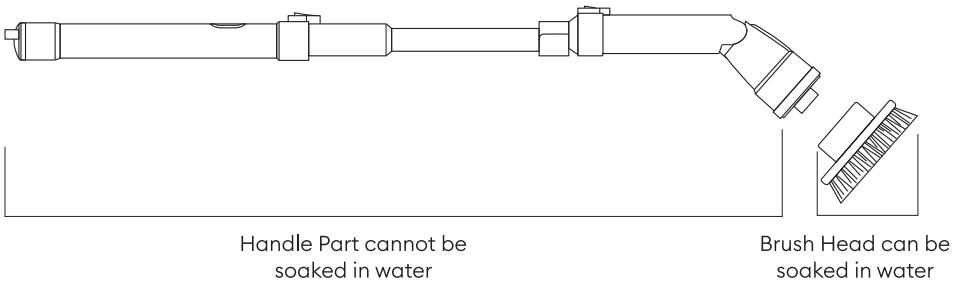
CLEANING AND STORAGE INSTRUCTIONS

Handle Part:

Gently wipe the handle part of the scrubber with a wrung soft cloth.

Brush Head:

Disassemble the brush head, and immerse it into the water to clean. Clean it with neutral detergent if only water makes it difficult to clean.



- Clean only with a soft cloth.
- Only use a mild detergent to clean the unit.
Do not use alcohol-based or abrasive cleaners.
- Let the unit dry by separating all parts.

Warning! Do not submerge the electric spin scrubber, or shower it in the water.

Suggested Storage

Store the scrubber in a ventilated and shade place. Avoid storing it in damp, wet places or exposing it to strong sunlight.

TROUBLESHOOTING

Problem

Possible Solution

The appliance does not work

- Charge and restart the appliance.
- Confirm that there is no debris between the rotating parts and the brush head.
- Make sure the power is on.

The product has insufficient rotation force

- Confirm there is no debris in the rotating parts.
- See if it's out of power, and try charging it again.

The charger is plugged, but no red indicator light is on

- Press Power Button once again. The red indicator light should come on. Check the outlet to ensure there is power

Can't charge

- Make sure the adapter is connected to the AC outlet.
- Make sure the charging interface of the host is connected

After full charging, the service time is shorter than before

- Improper use will affect the battery time. Do not apply too much down force to extend the battery life.

FCC STATEMENT

Operating this appliance is subject to these two conditions:

The device may not cause harmful interference, and the device will accept any interference received, including interference that may cause undesired operation.

For your information:

The device complies with the limits for a Class B digital device which makes it according to part 15 of the FCC Rules, being tested in accordance. The device limits are able to provide adequate protection against harmful interference for an everyday residential use. If not installed and used according to instructions, the device may cause harmful interference to radio communication, given the use and radiation of radio frequency energy.

In the possibility of harmful interference to radio or TV reception, the user should be able to address the interference, by applying one or more following measures:

- Relocate and change the position of the receiving antenna.
- Increase the distance between device and other equipments.
- Use a different outlet for other devices than the one to which the receiver is connected.
- Inquire to a certified radio/TV technician if the problem still persist.

1. Why isn't the red indicator on while charging?

- a. Check if the charging socket is abnormal or power outage.
- b. If the indicator light is green after plugging in the adapter, the product is already fully charged.
- c. If neither of the above two conditions, please contact our customer service via email: [**info@geniani.com**](mailto:info@geniani.com).

2. The charging indicator light doesn't turn green after charging for over 5 hours.

- a. Please check if socket and charging connection are loose. Make sure to plug them tightly before charging.
- b. Contact with water will damage the internal circuit and cause abnormal charging.
- c. If neither of the above two conditions apply, please contact our customer service via email.

3. Why does the brush head stop spinning while working?

- a. If the red light flashes for 30 seconds and then stops, it may be that the user presses the brush head too hard, causing the automatic brush to stop. Switch the ON/OFF button once or twice to return to normal.
- b. If the red light keeps flashing and doesn't stop, it means that the battery is low, and it needs to be fully charged before use.
- c. If not the above conditions apply, or the product stops rotating after spinning less than 10S, or the spin does not resume after

pressing the ON/OFF button twice, please contact our customer service via email.

4. Why does the charging indicator turns green (representing a full charge), but the brush head does not spin after being turned on?

a. Please check if the brush head is tightly connected with the extension rod and handle. For the right connection method, refer to the installation guide.

b. If it has been well-connected and the product has not been soaked in water before, yet the scrubber does not spin after turning on, or it stops spinning without pressing the brush head too hard, please contact our after-sales customer service via email.

5. Why does the brush head spin less than 90 minutes, or does not work after pressing ON/OFF button twice when the battery is fully charged?

The force applied to the head will affect the usage time. If you keep pressing the brush head too hard, the working time will be less than 90 mins. Avoid pressing the brush head too hard to prolong usage time and prevent breaking the brush head.

WARRANTY

Terms & Policy

The product delivered to the original purchaser is warranted to be free from material and workmanship defects. The manufacturer warrants this product, under normal conditions of use, for a time period of one year from the date of the original purchase. The manufacturer guarantees, subject to verification of the defect or malfunction and proof of purchase, that any repairs, or furnish of an equal product, will be done without charge, at our option during the given warranty period.

The product comes with no other express warranty.

The warranty becomes void under the following circumstances:

- The product is modified from its original state
- The product was not used in accordance with the instruction given in the user manual
- There are damages or defects due to accident, abuse, misuse, or improper maintenance
- There are damages or defects due to servicing or repairs done by unauthorized service providers
- There are damages or defects due to commercial or rental use, or other uses for which the product is not suitable for
- There are damages or defects that exceeds the total cost of the product

Geniani warranty does not cover any indirect, incidental, or consequential damages related to the use of this product. Geniani warranty only applies to the original purchaser of the product, and

WARRANTY

cannot be transferred to other ensuing owners.

Geniani warranty is not available to products purchased from unauthorised sellers. Our warranty only applies if the product is purchased from authorized sellers that are aligned with Geniani's quality controls. All other implied warranties are only viable during the period of this limited warranty. Geniani warranty ensures specific legal rights which vary, and may be expanded, from state to state. The exclusion or limitation of consequential or incidental damages do not apply to you, if residing in a state that doesn't allow this.

If our product is found to be defective within the given warranty period, please contact Customer Support via **info@geniani.com**.

Disposing the product before contacting us will void the warranty.

After our Customer Support Team approves your request, please return the product alongside the order ID and a copy of the invoice.

EXTEND YOUR
WARRANTY BY

ONE
YEAR

Register your product within **14 days** of purchase at **www.geniani/warranty** to extend your 1-year warranty by an additional year.



SCAN ME

SPECIFICATIONS

Product Name:	Electric Spin Scrubber
Model:	Aster
Battery Type:	Li-ion Battery
Battery Capacity:	2500 mAh
Battery Quantity:	2 Batteries
Voltage:	7.4V
Input:	100-240V~, 50/60Hz
Output:	9V === 0.65 A
Charging Time:	up to 4 Hours <ul style="list-style-type: none">• When charging - red light on• When fully charged - green light on
Running Time:	up to 90 minutes
Rotating Speed:	300 RPM
Waterproof:	IPX7 for scrubber head IPX4 for appliance body
Noise Level:	≤ 70dB

CUSTOMER SUPPORT

If you have any questions or concerns about your new product, please contact our helpful Customer Support Team

*Please have your order invoice and order ID ready before contacting Customer Support.



QUESTIONS OR CONCERNS?

PLEASE CONTACT US

E-mail: info@geniani.com

Phone: 1 (833) 780-5026

Support Hours: Mon–Fri,
9:00 am–5:00 pm PST/PDT



 SCAN ME

We are proud of our exquisite customer support service, treating everyone like they're part of our family.

For more information, please visit our website
www.geniani.com

Contact us anytime!

GENIANI

800 Progress Center Ct, Ste 100,
Lawrenceville,
GA 30043, United States
Phone: 1 (833) 780-5026