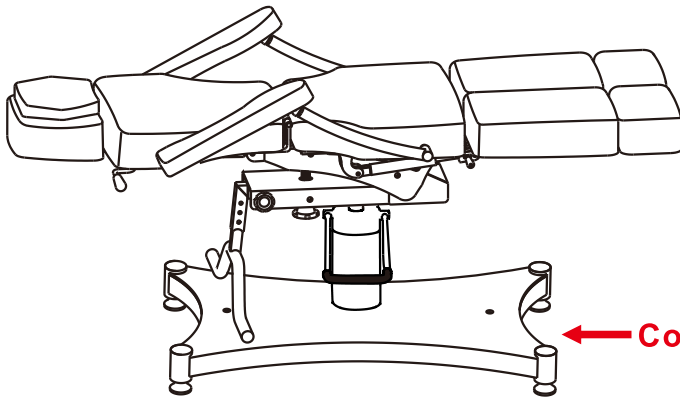


# INSTRUCTION MANUAL

## TATSOUL Oros



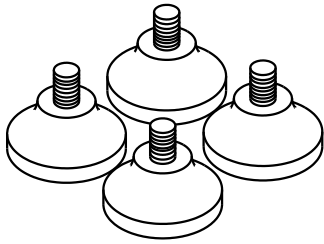
← Correct Position

Safety is very important when using your chair.  
Before placing your client in the chair, ALWAYS make sure your chair  
is locked and the bed area is in a position parallel to the base.

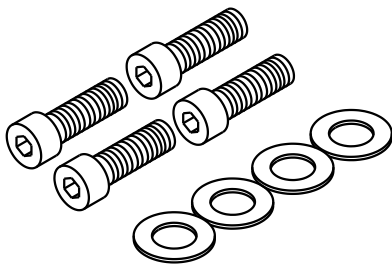


# CONTENTS

---

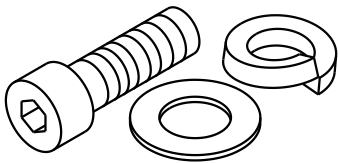


A: Adjustable Foot Pegs  
 $\Phi 48 \times 10 \times 30$  4 pcs



B: Base Bolt  
M8x20 4 pcs

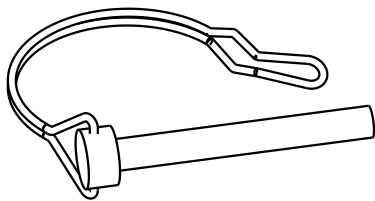
C: Base Washer  
 $\Phi 8 \times 17 \times 1.5$  4 pcs



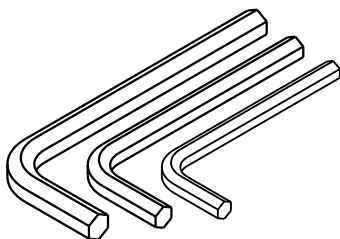
D: Connector Bolt  
M10x25 1 pcs

E: Connector Washer  
 $\Phi 10 \times 20 \times 1.5$  1 pcs

F: Split Lock Elastic Gasket  
 $\Phi 10$  1 pcs



G: Lock Pin 1 pcs

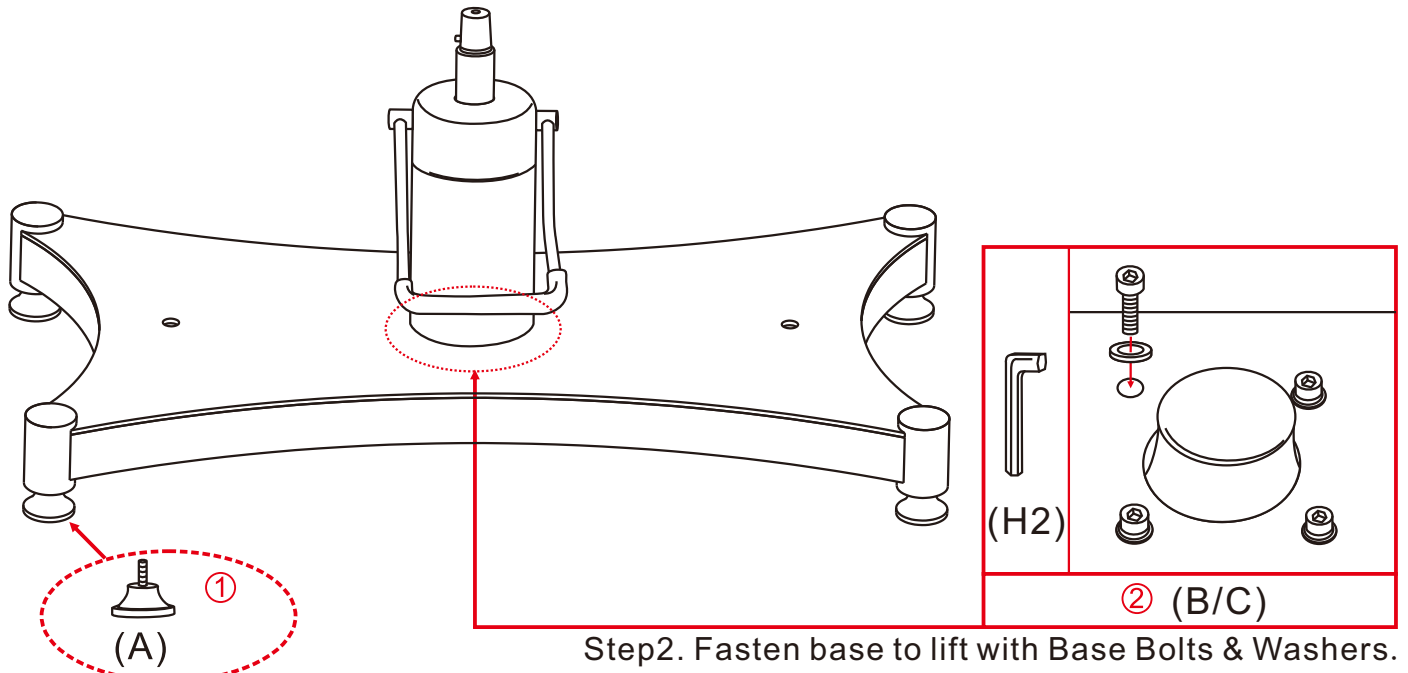


H1: M4 Hexagon key 1 pcs

H2: M6 Hexagon key 1 pcs

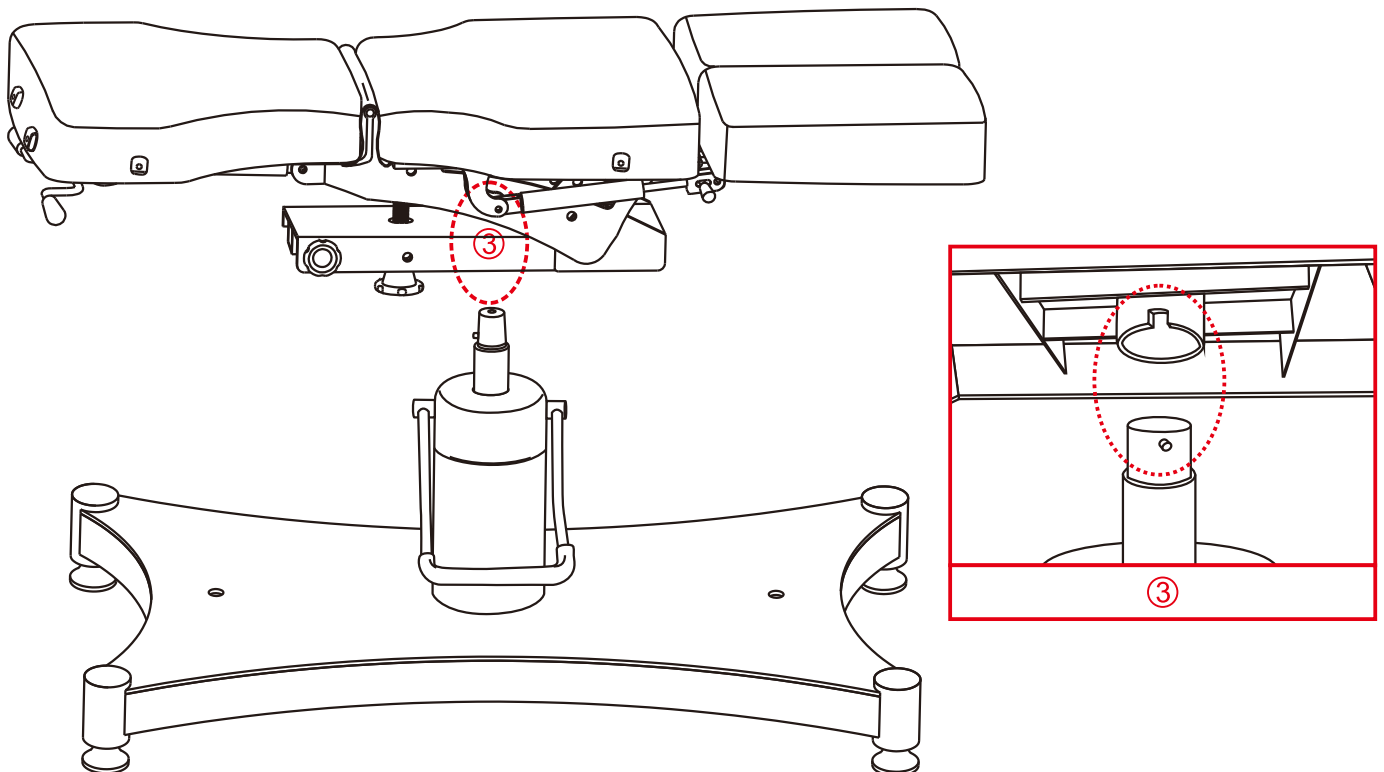
H3: M8 Hexagon key 1 pcs

# ASSEMBLY INSTRUCTIONS



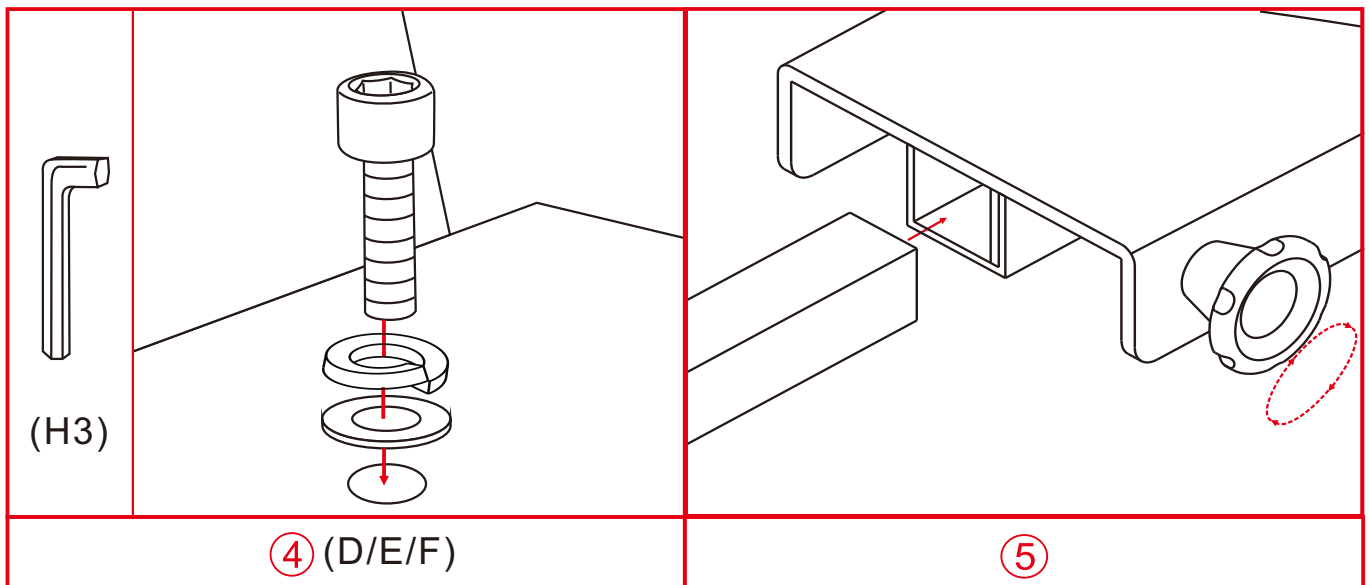
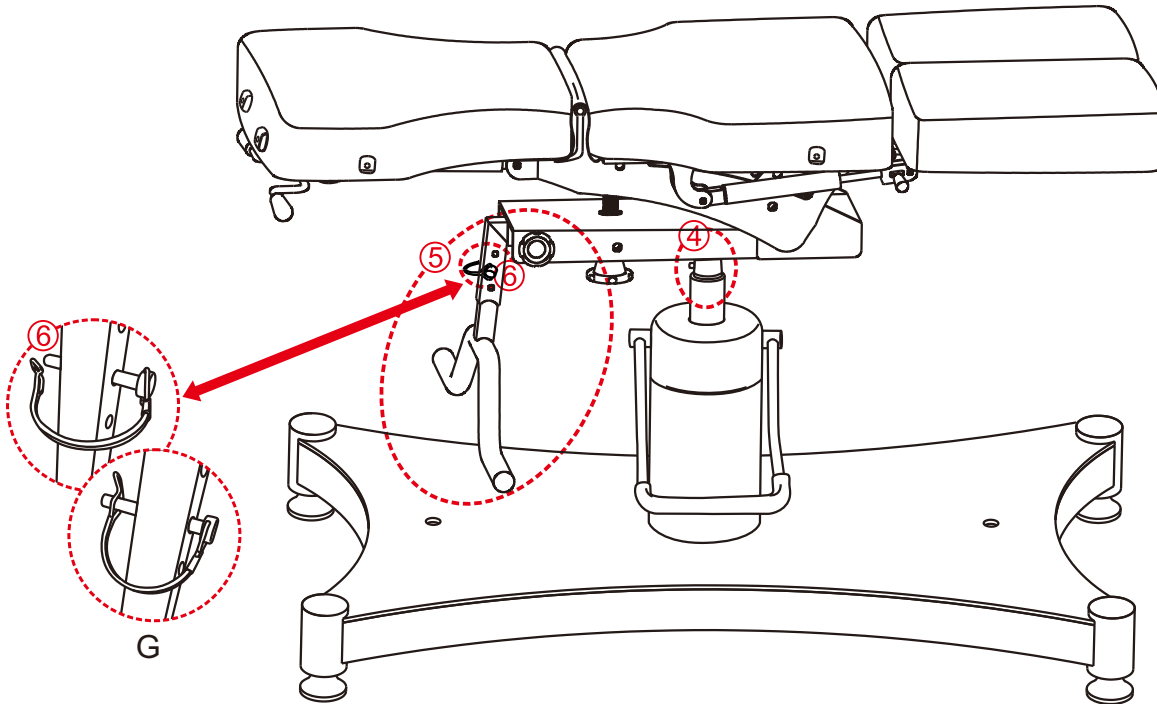
Step2. Fasten base to lift with Base Bolts & Washers.

Step1. Screw foot pegs into base.



Step3. Place Seat Frame Bracket on to lift piston, aligning seat frame notch with piston peg.

# ASSEMBLY INSTRUCTIONS

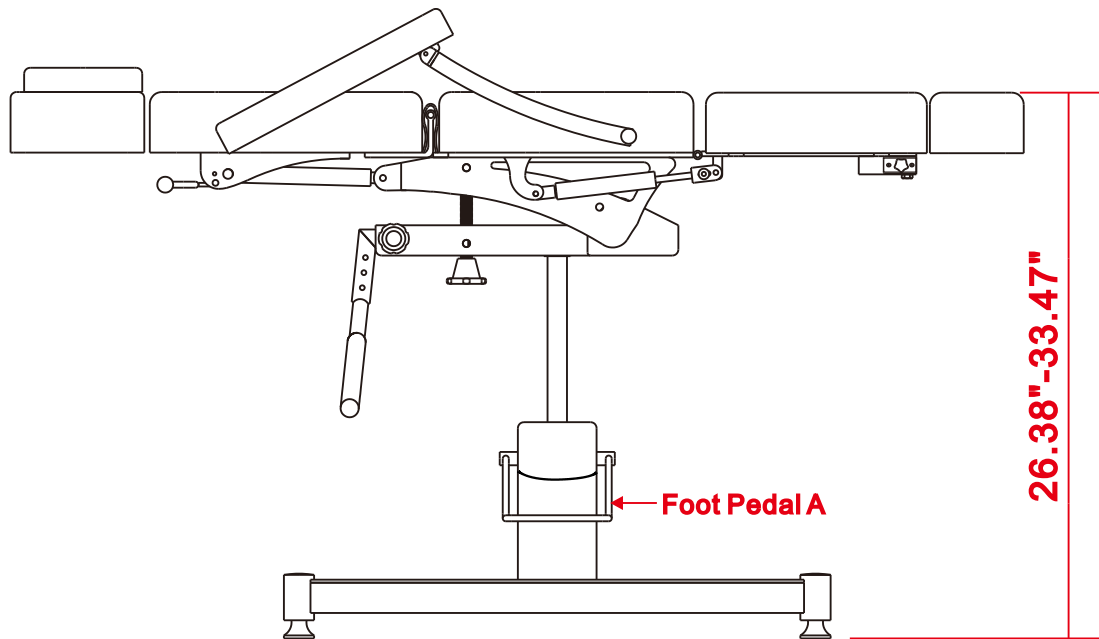


**Step 4.** Fasten Seat Frame Bracket to Lift Piston, using connector bolt with washer and gasket.

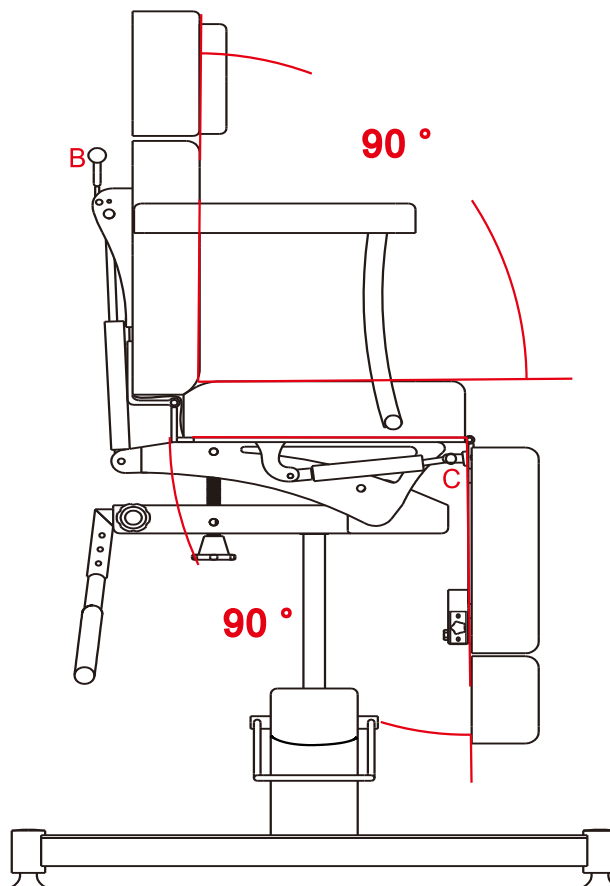
**Step 5.** Insert Adjustable Foot Rest into seat frame bracket and tighten lock knob. Insert locking pin into foot rest height adjustment holes.

# OPERATING INSTRUCTIONS

- 1) The height is adjustable by pressing Foot Pedal A. Press to adjust from 26.38" to 33.47".

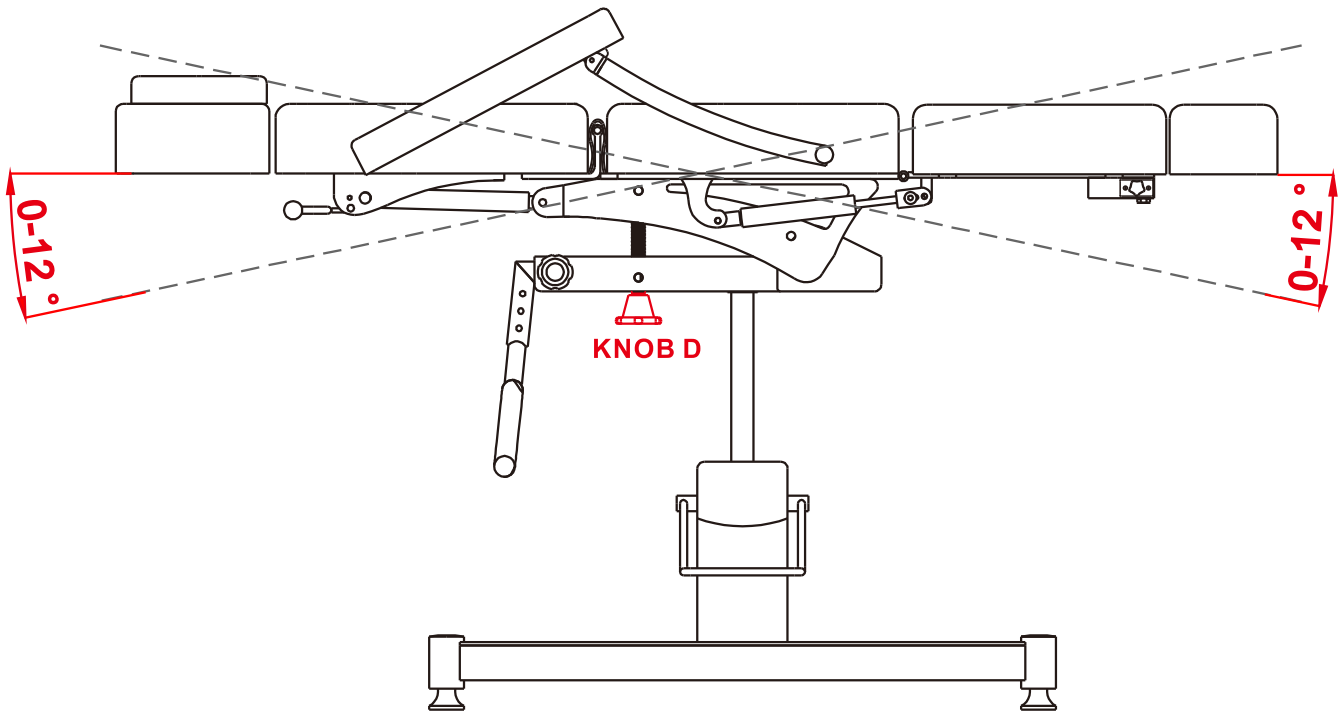


- 2) The back and foot rest are separately adjustable. Use Lever B to adjust the back of the chair and Lever C to adjust the foot rest. Both are adjustable from 0 to 90 degrees.

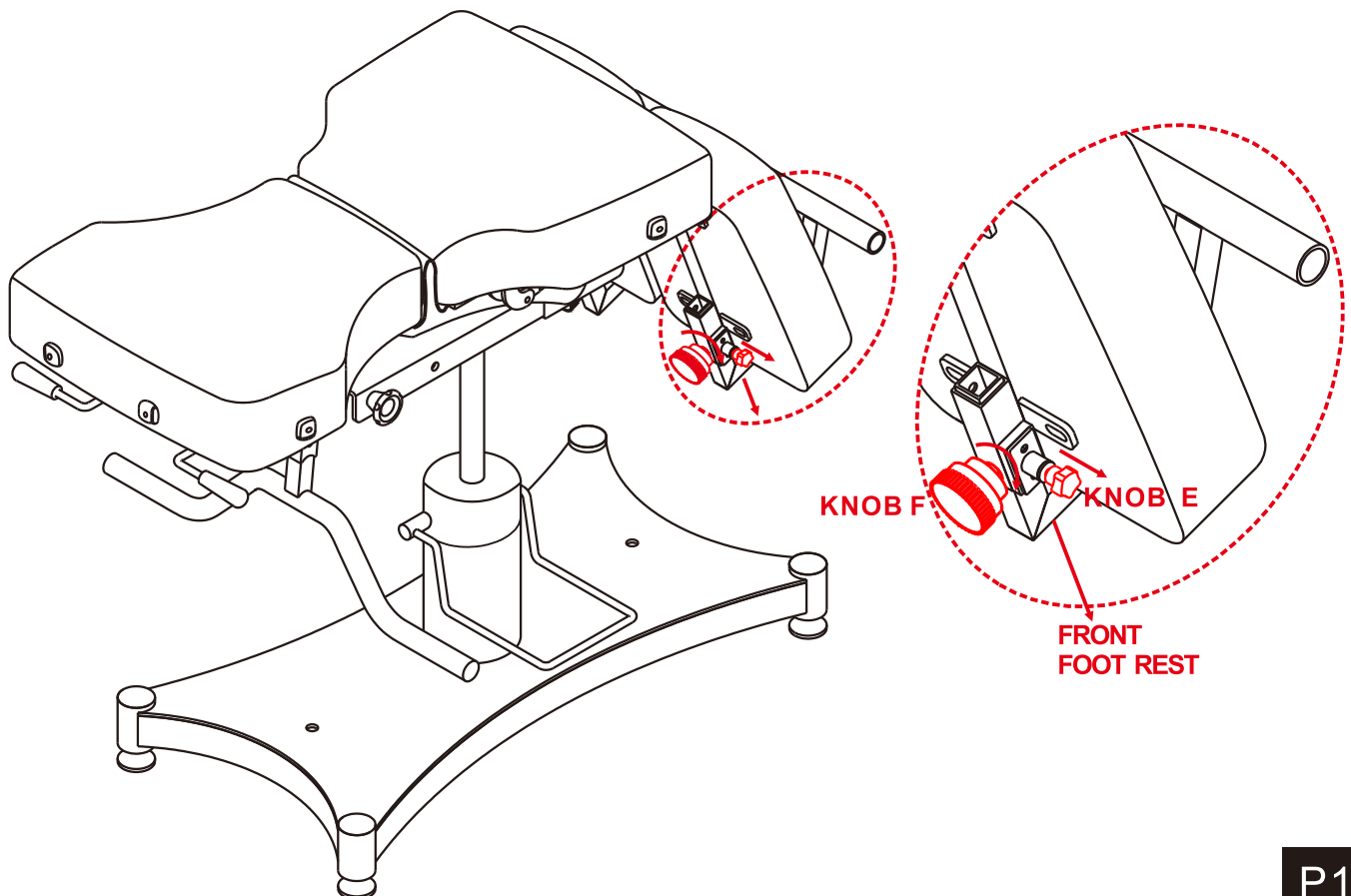


# OPERATING INSTRUCTIONS

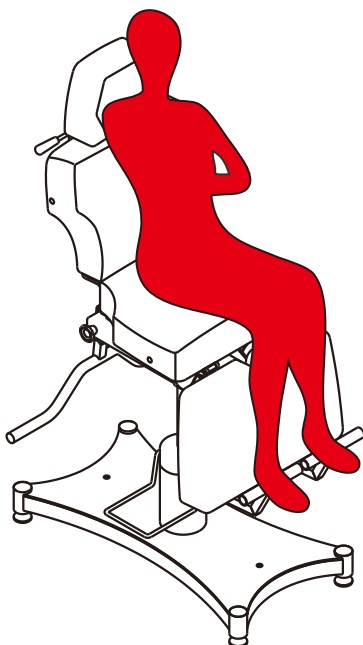
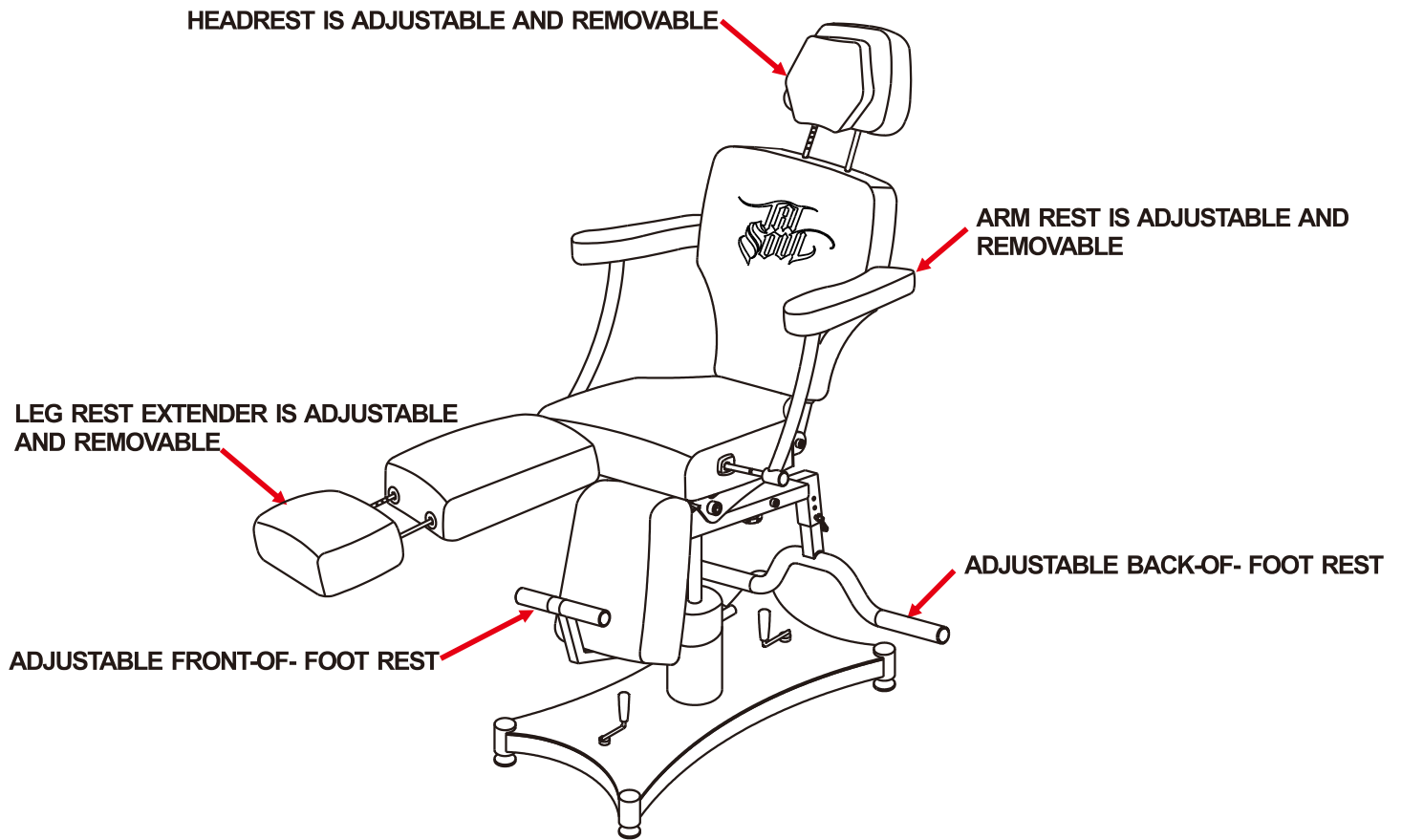
3) Using Knob D, you can adjust the chair's incline from 0-12 degrees.



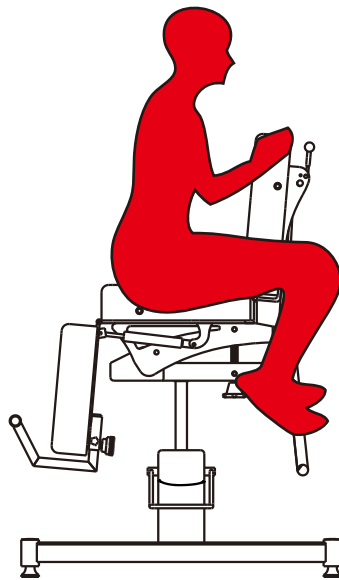
4) Adjusting the leg rest is easy by turning Knob E. Once in place, make sure you lock it tight by turning Knob F.



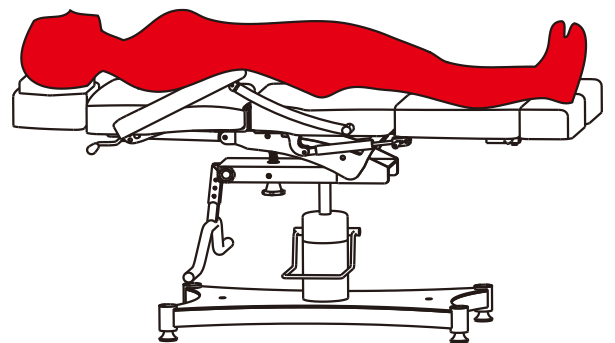
# OPERATING INSTRUCTIONS



CHAIR POSITION



STRADDLE POSITION

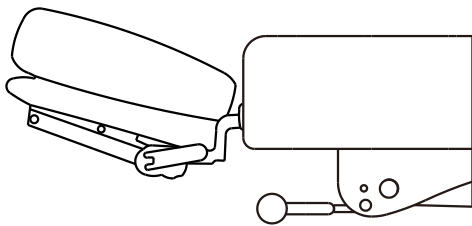


BED POSITION

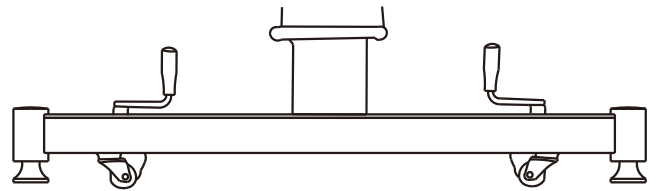
**WARNING:**  
Base and bed must be completely parallel when in the bed position!

# OPTIONAL ACCESSORIES

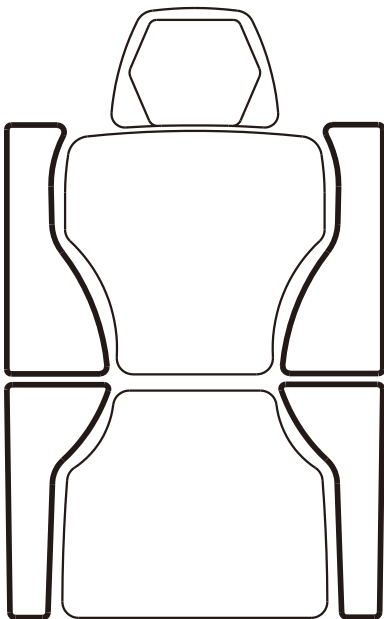
Face Cradle



TATsoul Retractable Safety Wheels



Oros Wing Extensions



Oros Protective Covers





# VINYL AFTERCARE

---

**1. Cleaning Instructions.** To ensure the safety and life of your vinyl seats, please use only specified cleaners and cleaning materials listed below.

**2. Accepted Cleaners.** Mix a small amount of mild dish soap with warm(not hot) water . Dip a very soft-bristled brush or soft cloth into the soapy water and gently scrub with seats in a circular motion. Wipe the water off with another soft, dry cloth.

**3. Unacceptable Cleaners.** Do not use abrasive cleaning compounds such as bleach or ammonia. They will harm the vinyl and, over time, cause the material to fade or tear. Also, do not use:

Concentrated detergents

Silicone oils

Waxes

Petroleum distillates

Dry cleaning fluids

Solvents

Steel wool

Sharp cleaning tools

Abrasive cleaning materials or impements

Acid-based cleaners

# CONTACT INFORMATION:

.....  
If you have questions about your new chair, please feel free to contact TATSoul via phone or email.

We are available to answer your call from 8:00am-5:00pm Monday through Friday PST. (Pacific Standard Time)

You may expect a same-day response to your email. This includes evenings and weekends.  
.....

## General Information:

Email: [sales@tatsoul.com](mailto:sales@tatsoul.com)

Fax: [1-800-768-5643](tel:1-800-768-5643)

## Sales:

Email: [sales@tatsoul.com](mailto:sales@tatsoul.com)

Telephone: [1-888-TAT-SOUL](tel:1-888-TAT-SOUL)  
[\(1-888-828-7685\) Option 1](tel:1-888-828-7685)

## Technical Support:

Email: [support@tatsoul.com](mailto:support@tatsoul.com)

Telephone: [1-888-TAT-SOUL](tel:1-888-TAT-SOUL)  
[\(1-888-828-7685\) Option 2](tel:1-888-828-7685)