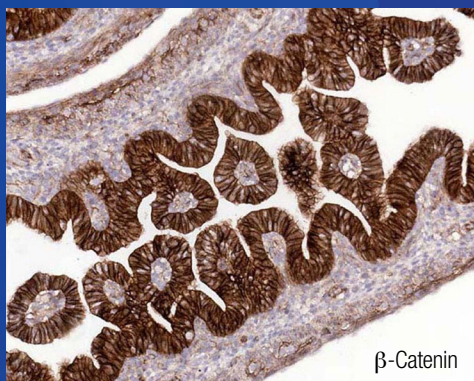


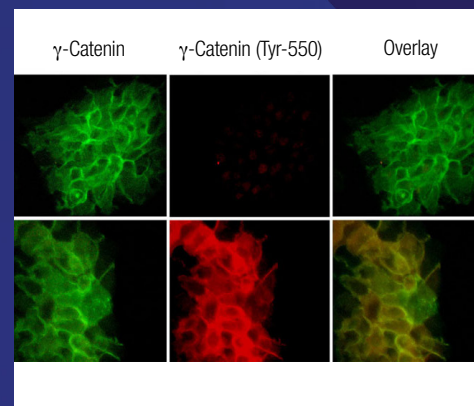
## Introducing Our **New Cancer Antibodies**

CATALOG #	TARGET
<b>AP5281</b>	<b>Argonaute 2</b>
<b>AP5291</b>	Argonaute 2 (Ser-387)
<b>AP5311</b>	Argonaute 2 (Tyr-393)
<b>AM3611</b>	<b>ATM</b>
<b>AP3631</b>	ATM (Ser-794)
<b>AM3661</b>	ATM (Ser-1981)
	<b>Cadherins</b>
<b>CP1921</b>	E-Cadherin
<b>CM1701</b>	N-Cadherin
<b>CP1801</b>	N-Cadherin (Tyr-820)
<b>CP1951</b>	N-Cadherin (Y860) [E-Cadherin (Y835)]
<b>CM5961</b>	P-Cadherin
<b>CP2231</b>	VE-Cadherin
<b>CP1981</b>	VE-Cadherin (Tyr-685)
	<b>Caspases</b>
<b>CM3771</b>	Caspase-3
<b>CM4911</b>	Caspase-3 (cleaved p17 subunit)
<b>CM3781</b>	Caspase-6
<b>CM3821</b>	Caspase-8



CATALOG #	TARGET
	<b>Catenins</b>
<b>CP3431</b>	$\alpha$ 1-Catenin
<b>CP3451</b>	$\alpha$ 1-Catenin (Tyr-148)
<b>CP1061</b>	$\beta$ -Catenin
<b>CP1191</b>	$\beta$ -Catenin (Tyr-86)
<b>CP1081</b>	$\beta$ -Catenin (Tyr-142) [ $\gamma$ -Catenin (Tyr-133)]
<b>CP3051</b>	$\beta$ -Catenin (Tyr-333) [ $\gamma$ -Catenin (Tyr-324)]
<b>CP2961</b>	$\beta$ -Catenin (Tyr-489) [ $\gamma$ -Catenin (Tyr-480)]
<b>CP4021</b>	$\beta$ -Catenin (Tyr-654) [ $\gamma$ -Catenin (Tyr-644)]
<b>CP2971</b>	$\gamma$ -Catenin
<b>CP1121</b>	$\gamma$ -Catenin (Tyr-550)
<b>CM3561</b>	$\delta$ 1-Catenin (Tyr-228)
<b>CM3541</b>	$\delta$ 1-Catenin
	<b>CDs</b>
<b>CM0071</b>	CD44
<b>CM0371</b>	CD46
<b>CM0021</b>	CD55
<b>CM0111</b>	CD59
<b>CM0341</b>	CD63
<b>CM0261</b>	CD99
<b>CM0361</b>	CD147/Emmprin/Basigin
<b>CM0481</b>	CD155/PVR
<b>CM0531</b>	CD244/2B4/SLAMF4
<b>CM0541</b>	CD47
<b>CM0641</b>	CD73/NT5E

CATALOG #	TARGET
	<b>EGFR</b>
<b>EP1871</b>	EGFR
<b>EP1931</b>	EGFR (Ser-1142)
<b>EP1911</b>	EGFR (Ser-967)
<b>EM1991</b>	EGFR (Tyr-1101)
	<b>I<math>\kappa</math>B<math>\alpha</math></b>
<b>IP1861</b>	I $\kappa$ B $\alpha$
<b>IM3741</b>	I $\kappa$ B $\alpha$ (Ser-32/Ser-36)
<b>IP1031</b>	I $\kappa$ B $\alpha$ (Tyr-42)
<b>IP1041</b>	I $\kappa$ B $\alpha$ (Tyr-305)
	<b>Rafs</b>
<b>RM2891</b>	A-Raf
<b>RP2011</b>	B-Raf
<b>RP2031</b>	B-Raf (S446)[C-Raf (S338)/A-Raf (S299)]
<b>RM2081</b>	C-Raf
<b>RP2901</b>	C-Raf (S471)[B-Raf (S579)/A-Raf (S432)]



For a complete product listing, details and images please visit  
**PHOSPHOSOLUTIONS.COM**

# Phospho Cancer Antibodies

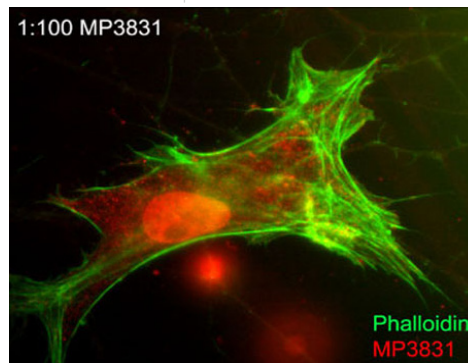
Advance your research with our Antibodies that Work™

CATALOG #	TARGET
	<b>Integrins</b>
IM5941	Integrin $\alpha$ L
IM0041	Integrin $\beta$ 1
IM0061	Integrin $\beta$ 1
IM0321	Integrin $\beta$ 1
IM0411	Integrin $\beta$ 1
IM5811	Integrin $\beta$ 3
IM1261	Integrin $\beta$ 4
IP1281	Integrin $\beta$ 4 (Tyr-1494)
IP1291	Integrin $\beta$ 4 (Tyr-1526)

CATALOG #	TARGET
	<b>Myosins</b>
MP3791	Myosin IIA Heavy Chain
MP5181	Myosin IIA Heavy Chain (Ser-1803)
MP5191	Myosin IIA Heavy Chain (Ser-1916)
MP3831	Myosin IIA Heavy Chain (Ser-1943)
MP4541	Myosin 4/MyHC-IIB
MP4551	Myosin 7B/MHC14
MP4561	Myosin 13/Extraocular Myosin
MP4201	Myosin Light Chain
MP3461	Myosin Light Chain (Ser-1)
MP4221	Myosin Light Chain (Ser-19)

CATALOG #	TARGET
	<b>Paxillin</b>
PM1071	Paxillin
PM1021	Paxillin (Tyr-31)
PP1341	Paxillin (Ser-83)
PP4501	Paxillin (Tyr-118)
PP1051	Paxillin (Ser-178)
PP4491	Paxillin (Thr-538)

CATALOG #	TARGET
	<b>PKC</b>
PM2371	PKC $\alpha$
PM4991	PKC ( $\alpha, \beta, \gamma$ )
PP1091	PKC $\alpha$ (Ser-657/Tyr-658)
PM2421	PKC $\delta$
PM2171	PKC $\theta$
PM1561	PLC $\gamma$ 1
PP1491	PLC $\gamma$ 1 (Tyr-775)

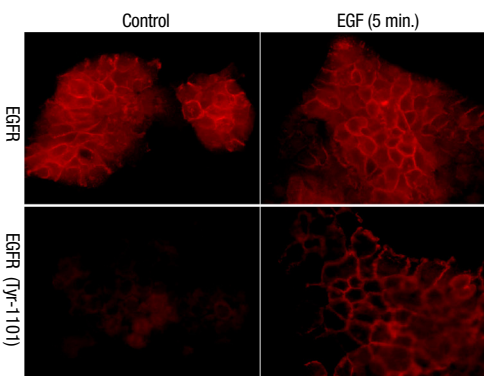
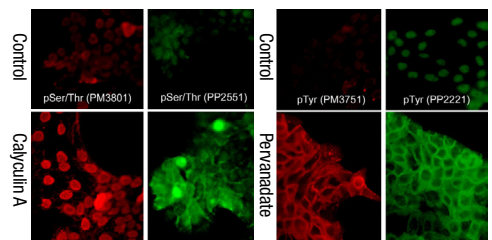


CATALOG #	TARGET
	<b>Stats</b>
SM2491	Stat1
SM1351	Stat1 (Tyr-701)
SM2631	Stat3
SM2511	Stat5
SM1481	Stat5 (Tyr-694)

CATALOG #	TARGET
	<b>TRPMs</b>
TM5731	TRPM7
TP5661	TRPM7 (Ser-1493)
TP5671	TRPM7 (Ser-1513)
TP5681	TRPM7 (Ser-1569)
TM5711	TRPM8

CATALOG #	TARGET
	<b>VEGFRs</b>
VP2871	VEGFR-2
VP2921	VEGFR-2 (Tyr-801)
VP2941	VEGFR-3

CATALOG #	TARGET
	<b>Global Phosphorylation Detection</b>
PM3751	Phosphotyrosine M375
PM3801	Phosphoserine/threonine M380
PP2221	Phosphotyrosine
PP2551	Phosphoserine/threonine



 **phosphosolutions**  
ANTIBODIES THAT WORK™

Placing your order with PhosphoSolutions® is fast and easy.

Order online: [PhosphoSolutions.com](http://PhosphoSolutions.com)

Call toll-free: (888) 442.7100

Fax: (720) 859.4052

Made in the USA