

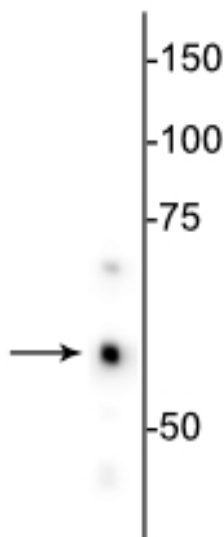
Product Datasheet

Anti-Hsp60

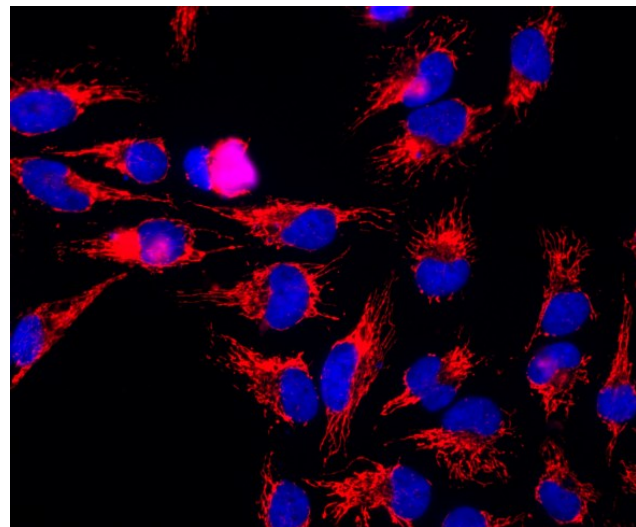
Overview

Catalog #	750-HSP60
Host Species	Mouse Monoclonal
Isotype	IgG ₁
Clone	1C7
Format	Protein G Purified
Applications	WB 1:1000 IHC 1:1000-1:5000 ICC 1:500-1:5000
Species Tested	Human, Mouse, Rat
Expected Reactivity	Bovine, Canine, Feline, Goat, Guinea Pig, Hamster, Horse, Non-Human Primate, Rabbit, Sheep, Zebrafish
Immunogen	Recombinant full length human HSP60 protein.
Molecular Weight	60 kDa
Cite this Antibody	PhosphoSolutions Cat# 750-HSP60, RRID: AB_2715493

Images



Western blot of HeLa cell lysate showing specific immunolabeling of the ~60 kDa HSP60 protein.



Immunofluorescence of HeLa cells showing strong mitochondrial staining of HSP60 (1:500) in red.

Details

Target Description	HSP60 is a member of the heat shock protein family which is thought to play a key role in mitochondrial protein transport and proper refolding of proteins imported from the cytoplasm into the mitochondrial matrix (Koll et al., 1992). More recently, HSP60 has been implicated in the pathogenesis of cardiovascular disease (Rizzo et al., 2011).
Specificity	Specific for endogenous levels of the ~ 60 kDa HSP60 protein.
Production/Purification	Protein G purified culture supernatant
Quality Control	Western blots performed on each lot.
Buffer	PBS + 50% glycerol and 5 mM NaN ₃ .
Storage	Storage at -20°C is recommended, as aliquots may be taken without freeze/thawing due to presence of 50% glycerol.
Stability	After date of receipt, stable for at least 1 year at -20°C.

Our Guarantee

As an original manufacturer, we are dedicated to creating quality and reproducible antibodies that further your research. We provide personalized customer support from the scientists that made the antibody and offer a free replacement or 100% refund if we cannot resolve an issue. Order today and experience **Antibodies that Work™**.

Note: For research use only. Not intended for therapeutic or diagnostic use. Use of all products is subject to our terms and conditions, viewable on our website.