

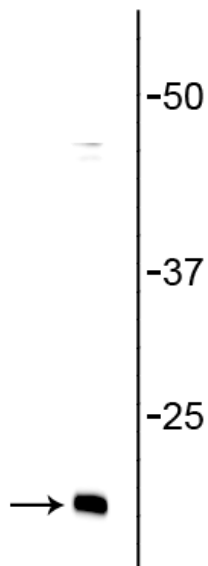
Product Datasheet

Anti-Synaptobrevin (VAMP)

Overview

Catalog #	1933-SYB
Host Species	Mouse Monoclonal
Isotype	IgM
Clone	SP10
Format	IgM Purified culture supernatant
Applications	WB 1:1000 IHC 1:100
Species Tested	Bovine, Human, Mouse, Pig, Rat, Rabbit, Hamster
Immunogen	Synaptic immunoprecipitate (crude) from human brain.
Molecular Weight	16 kDa
Cite this Antibody	PhosphoSolutions Cat# 1933-SYB, RRID:AB_2492248

Images



Western blot of rat brain lysate showing specific immunolabeling of the ~16 kDa synaptobrevin protein.

Details

Target Description	Synaptobrevin (aka VAMP) is an integral membrane protein of synaptic vesicles that plays a major role in the formation of larger SNARE complexes, along with SNAP-25 and syntaxin. Synaptobrevin has been shown to be essential for two fast synapse-specific membrane trafficking processes: fast exocytosis for neurotransmitter release and fast endocytosis that mediates rapid recycling of synaptic vesicles (Deak et al., 2004). Decreased levels of synaptobrevin in human hippocampus and cortex have been correlated with cognitive deficits in Alzheimer's disease (Sze et al., 2000).
Specificity	Specific for endogenous levels of the ~16 kDa synaptobrevin. The antibody has also been demonstrated to work in immunohistochemistry on formalin fixed, vibratome sections, but does not work on paraffin sections.
Production/Purification	IgM purified culture supernatant.
Quality Control	Western blots performed on each lot.
Buffer	10 mM HEPES (pH 7.5), 150 mM NaCl, 100 µg per ml BSA and 50% glycerol.
Storage	Storage at -20°C is recommended, as aliquots may be taken without freeze/thawing due to presence of 50% glycerol.
Stability	After date of receipt, stable for at least 1 year at -20°C.

Our Guarantee

As an original manufacturer, we are dedicated to creating quality and reproducible antibodies that further your research. We provide personalized customer support from the scientists that made the antibody and offer a free replacement or 100% refund if we cannot resolve an issue. Order today and experience **Antibodies that Work™**.

Note: For research use only. Not intended for therapeutic or diagnostic use. Use of all products is subject to our terms and conditions, viewable on our website.