

Product Datasheet

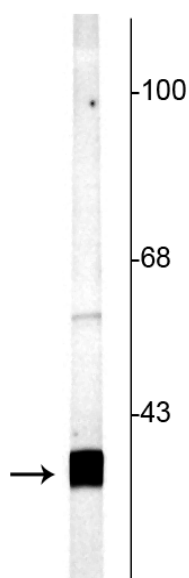
Anti-SNAP25



Overview

Catalog #	1905-SNAP
Host Species	Rabbit Polyclonal
Format	Antigen Affinity Purified from Pooled Serum
Applications	WB 1:1000
Species Tested	Rat
Expected Reactivity	Bovine, Canine, Chicken, Guinea Pig, Human, Non-Human Primate, Mouse, Zebrafish
Immunogen	Synthetic peptide corresponding to amino acid residues from the C-terminal region of rat SNAP25, conjugated to keyhole limpet hemocyanin (KLH).
Molecular Weight	25 kDa
Cite this Antibody	PhosphoSolutions Cat# 1905-SNAP, RRID:AB_2492238

Images



Western blot of rat cortical lysate showing specific labeling of the ~25 kDa SNAP25 protein.

Details

Target Description	SNAP25 (Synaptosomal associated protein of 25 kDa) is a presynaptic plasma membrane protein that is widely distributed throughout the brain and involved in the regulation of neurotransmitter release. Decreased levels of SNAP25 have been found in the brains of patients with Down Syndrome and Alzheimer's Disease (Greber et al.,1999). In addition, a significant reduction in the hippocampal expression of SNAP25 has also been found in patients with Schizophrenia (Fatemi et al., 2001).
Specificity	Specific for endogenous levels of the ~25 kDa SNAP25 protein.
Production/Purification	Prepared from rabbit serum by affinity purification using a column to which the C-terminal peptide immunogen was coupled.
Quality Control	Western blots performed on each lot.
Buffer	10 mM HEPES (pH 7.5), 150 mM NaCl, 100 µg per ml BSA and 50% glycerol.
Storage	Storage at -20°C is recommended, as aliquots may be taken without freeze/thawing due to presence of 50% glycerol.
Stability	After date of receipt, stable for at least 1 year at -20°C.

Our Guarantee

As an original manufacturer, we are dedicated to creating quality and reproducible antibodies that further your research. We provide personalized customer support from the scientists that made the antibody and offer a free replacement or 100% refund if we cannot resolve an issue. Order today and experience **Antibodies that Work™**.

Note: For research use only. Not intended for therapeutic or diagnostic use. Use of all products is subject to our terms and conditions, viewable on our website.