

Product Datasheet

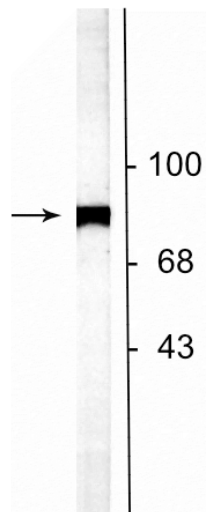
Anti-NSF (N-ethylmaleimide sensitive fusion protein)



Overview

Catalog #	1525-NSF
Host Species	Rabbit Polyclonal
Format	Antigen Affinity Purified from Pooled Serum
Applications	WB 1:1000
Species Tested	Rat
Expected Reactivity	Human, Non-Human Primate
Immunogen	Synthetic peptide corresponding to amino acid residues from the C-terminal region of rat NSF, conjugated to keyhole limpet hemocyanin (KLH).
Molecular Weight	75 kDa
Cite this Antibody	PhosphoSolutions Cat# 1525-NSF, RRID: AB_2492191

Images



Western blot of rat striatal lysate showing specific labeling of the ~75 kDa NSF protein.

Details

Target Description	NSF (N-ethylmaleimide sensitive fusion protein) is a critical component of the SNARE (soluble NSF attachment protein receptors) protein complex that is involved in synaptic vesicle trafficking. Specifically, NSF has been found to be essential in membrane fusion. Furthermore, NSF has been recently demonstrated to bind other protein complexes such as AMPA receptor subunits (GluR2), GATE-16, LMA-1 and Rabs suggesting a more diverse role in the assembly of various protein complexes (Whiteheart <i>et al.</i> , 2004).
Specificity	Specific for endogenous levels of the ~75 kDa NSF protein.
Production/Purification	Prepared from pooled rabbit serum by affinity purification via chromatography on an affinity column made with the C-terminal peptide used as antigen.
Quality Control	Western blots performed on each lot.
Buffer	10 mM HEPES (pH 7.5), 150 mM NaCl, 100 µg per ml BSA and 50% glycerol.
Storage	Storage at -20°C is recommended, as aliquots may be taken without freeze/thawing due to presence of 50% glycerol.
Stability	After date of receipt, stable for at least 1 year at -20°C.

Our Guarantee

As an original manufacturer, we are dedicated to creating quality and reproducible antibodies that further your research. We provide personalized customer support from the scientists that made the antibody and offer a free replacement or 100% refund if we cannot resolve an issue. Order today and experience **Antibodies that Work™**.

Note: For research use only. Not intended for therapeutic or diagnostic use. Use of all products is subject to our terms and conditions, viewable on our website.