

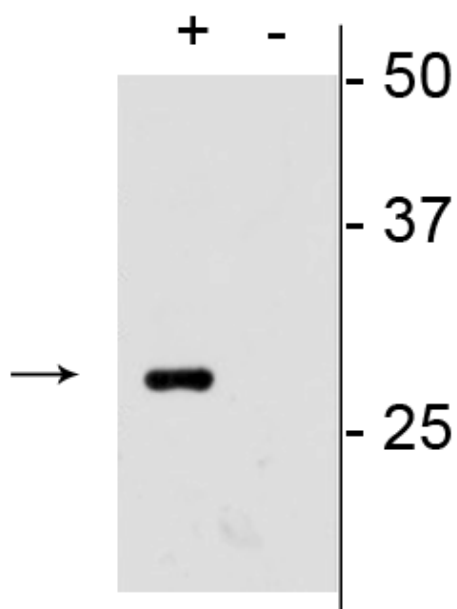
Product Datasheet

Anti-mCherry

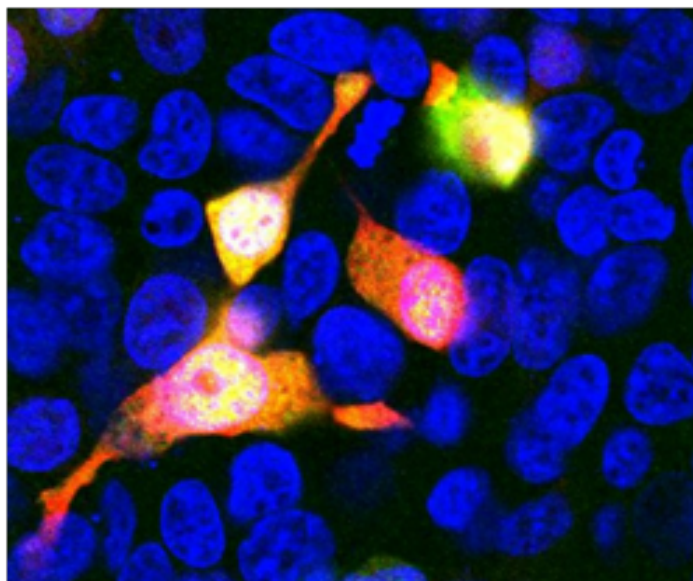
Overview

Catalog #	1203-mCherry
Host Species	Mouse Monoclonal
Isotype	IgG _{2A}
Clone	1C51
Format	Protein G Purified
Applications	WB 1:1000 IHC 1:500 ICC 1:500
Immunogen	Recombinant full length protein
Molecular Weight	28 kDa
Cite this Antibody	PhosphoSolutions Cat# 1203-mCherry, RRID: AB_2715492

Images



Western blot of mCherry transfected HEK293 cell lysate (+) showing specific immunolabeling of the ~28 kDa mCherry protein. Labeling is absent in the untransfected lysate (-).



Immunostaining of HEK293 cells transfected with mCherry (red) and stained with anti-mCherry antibody (catalog #1203-mCherry, green, 1:500) subsequently appear yellow. The nuclei stained blue (DAPI) distinguishes untransfected cells.

Details

Target Description	mCherry is a red fluorescent protein derived from DsRed which is isolated from disc corals and related to GFP (green fluorescent protein) (Shaner et al., 2004). Fluorescent proteins are commonly used to tag proteins in the study of their expression and in transgenic research. Antibodies against fluorescent proteins such as mCherry are especially useful when amplification of the fluorescent signal is necessary or desired.
Specificity	Specific for the ~28 kDa mCherry protein
Production/Purification	Protein G purified culture supernatant
Quality Control	Western blots performed on each lot.
Buffer	PBS + 50% glycerol and 5 mM NaN ₃ .
Storage	Storage at -20°C is recommended, as aliquots may be taken without freeze/thawing due to presence of 50% glycerol.
Stability	After date of receipt, stable for at least 1 year at -20°C.

Our Guarantee

As an original manufacturer, we are dedicated to creating quality and reproducible antibodies that further your research. We provide personalized customer support from the scientists that made the antibody and offer a free replacement or 100% refund if we cannot resolve an issue. Order today and experience **Antibodies that Work™**.

Note: For research use only. Not intended for therapeutic or diagnostic use. Use of all products is subject to our terms and conditions, viewable on our website.