



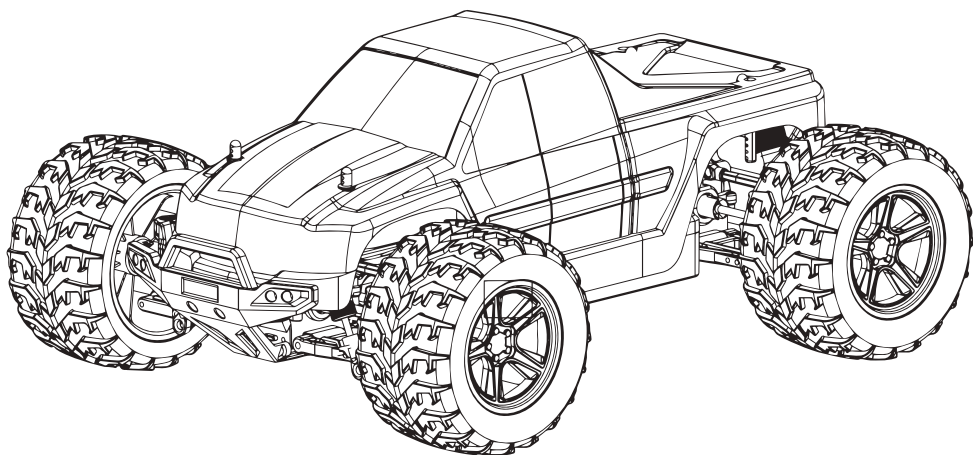
14+

AGES

LITTLE MONSTER

MANUAL

1/18 SCALE 4WD BRUSHED MONSTER TRUCK
2.4G RADIO SYSTEM



2.4
GHz

4WD
4 Wheel
Drive



WARNING: PLEASE READ THE INSTRUCTION MANUAL BEFORE OPERATING THE PRODUCT

BEFORE YOU PROCEED

CONTENTS

Contents	1
Safety precautions	2
Instruction	3
Model introduction	5
Ready to play	6
2.4G Remote control	9
Operating your model	11
Parts list	12
Truck parts diagram	16

INSTRUCTIONS

Thank you for purchasing the LITTLE MONSTER truck. Please read all instructions and warnings carefully before operating. Please also keep this instruction manual for future reference and maintenance.

IMPORTANT:

1. This LITTLE MONSTER truck is not a toy. It may cause injury or damage if not used properly under a controlled environment. Always make sure you practice driving in an open airspace area while following the rules and regulations which applies to the area to avoid any potential damage or Injury.
2. This product is suitable for experienced drivers no less than 14 years of age.

BEFORE YOU PROCEED

Please read carefully and follow all instructions.

Violation of these instructions shall be deemed as misuse or faulty operation. Before operating your remote-controlled car, please read all contents of this manual and check carefully the remote car.

Dealer shall not support return & exchange after the remote-controlled car is unpacked or used.

SAFETY PRECAUTIONS

PAY ATTENTION TO SAFETY PRECAUTIONS



Warning: Do not modify or alter this model. Changes or modifications to this model not expressly approved by the party responsible for compliance could void the user's authority to operate the equipment.

- The truck is suitable for ages 14 and above. Parents should supervise children who operate the truck.
- This truck is suitable for indoor or outdoor use.
- Switch off the truck and disconnect the battery when not in use.
- Keep hands, face and loose clothing away from the truck.
- Always follow these instructions when operating this truck.
- Do not operate near people or animals.
- Always unplug battery from charger after charging is complete. Disconnect the charger from the power source and only then disconnect the battery from the charger.
- DO NOT store the truck in a damp environment. The truck's interior is composed of delicate electronic components and mechanical parts, which can be seriously damaged by moisture. Please take serious care, as this type of damage may not be visible on the outside, but can cause the product damage or act unpredictably once in use.
- Always operate with safety in mind. DO NOT use this truck under the influence of drugs or alcohol, or in the case of fatigue, as improper operation can cause serious injury and/or property damage.
- DO NOT store or operate in high heat, as electrical components can be damaged.
- Small parts are included with this product. Please place it beyond the reach of the children to avoid a CHOKING HAZARD or parts being mistakenly swallowed.
- Only the original charger made from our factory can be used.
- Charger is not a toy.
- Engine will heat up. Please DO NOT touch it to avoid being burned or injured.
- Always operate your truck within eye sight.
- RC-PRO's all-weather electronics allow you to operate your truck in various conditions, including rain, snow, mud and more. DO NOT submerge your RC-PRO Truck!

INSTRUCTIONS

RECHARGEABLE BATTERY

Connect the truck battery to the charger. Plug the charger into a power outlet and fully charge (about 2.5 hours). DO NOT LEAVE CHARGING BATTERY UNATTENDED. The green LED light on the USB charger will flash as long as the battery is charging. The green light will turn to solid once the battery is full. The battery may be warm when charging is complete. Disconnect the charger from the outlet, then the battery from the charger.

BATTERY PRECAUTIONS

- Non-rechargeable batteries cannot be recharged.
- Do not dismantle or short circuit batteries.
- Keep batteries away from heat and flame.
- Charge rechargeable batteries under adult supervision.
- Remove rechargeable battery from truck before charging and when not in use.
- Remove battery before cleaning.
- Regularly check all wires, plugs and batteries to ensure proper performance and safety. In case of damage discontinue use until repair.

LITHIUM BATTERY SAFETY PRECAUTIONS

Our company is not liable for any damages incurred by the appropriate or inappropriate use of this product.

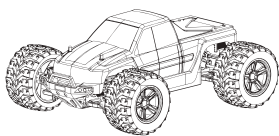
Warning: Check all batteries before charging and before use. Do not use or charge damaged batteries. Do not over-charge batteries. Keep batteries away from heat and flame. Lithium is highly reactive with water; always keep batteries away from water and humid conditions. Keep out of reach of children and pets. Product should not be used by persons under 14 years of age, and should be accompanied by an adult until 18 years of age. Our company is not liable for any damages resulting from improper use or handling of the product.



WARNING: Product should only be used by adults and children 14 years and older. Adult supervision required for children under 14 years of age.

WARNING: CHARGING OF THE TRUCK BATTERY MUST BE SUPERVISED AT ALL TIMES BY AN ADULT. UNPLUG THE BATTERY WHEN FULLY CHARGED. DO NOT OVER-CHARGE THE BATTERY.

PRODUCT PACKAGING CONTENT



LITTLE MONSTER X1



Remote X1



7.4V 850mAh
Lipo Battery X1



USB Charger X1



Body Clip X5

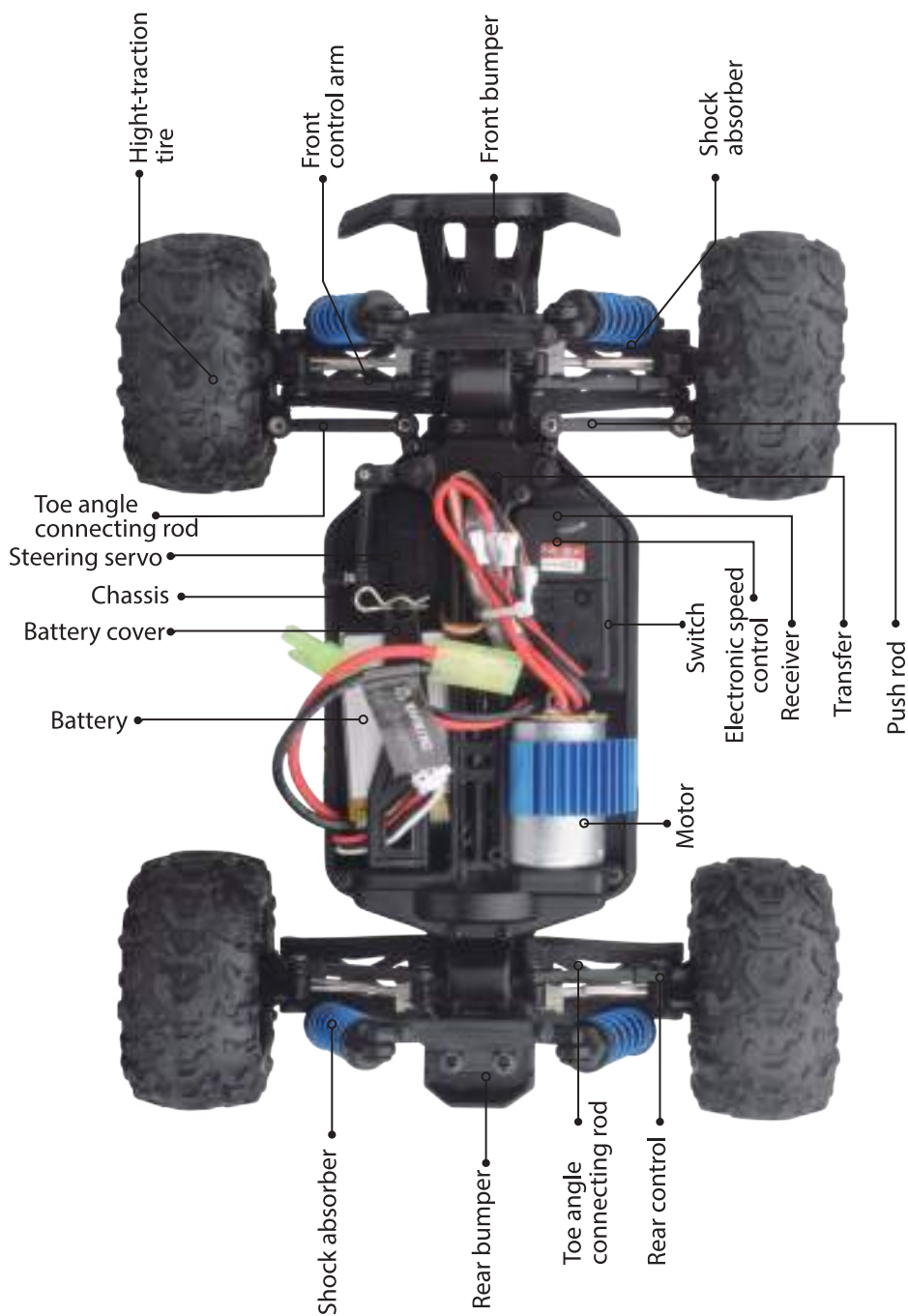


Manual X1

PRODUCT SPECIFICATION

Size of graphic carton (L*W*H):	468X250X130mm
Size of car (L*W*H):	236x190x100mm
Car weight(includes battery):	0.625kg
Wheel base:	165mm
Wheel diameter:	69mm
Drive:	4WD
Motor:	380 driver
Steering servo:	1.1KG tense
Battery:	7.4V 850mAh Lipo battery
Remote frequency:	2.4GHz
Remote distance:	100m
Charging mode:	USB balance charging cable

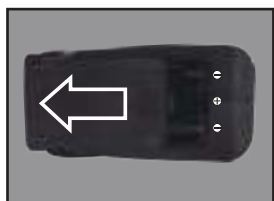
MODEL INTRODUCTION



INSTALLATION OF REMOTE BATTERY

Your remote requires three AA batteries (No.5). The battery compartment is at the bottom of the remote.

1. Hold and slide the battery compartment to take off the battery compartment cover.
2. Install the battery according to correct directions of positive and negative anodes, indicating on the battery compartment.
3. Re-install and close the battery compartment.



4. Turn the remote power on to check its state indicator light with red.
5. Once the remote control is paired with the truck, the indicator light will remain solid and the truck is ready to go.

The remote's LED indicator light will flash slowly in case the AA batteries are too weak. In this case, please change to fully charged AA batteries.

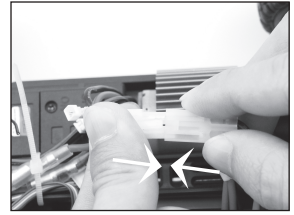
If the LED indicator of the remote is off, please check the direction of the positive and negative anodes and check whether the battery is charged fully.

Please refer to diagram of Identification number on page 9 for any other flash signals from LED.

- i** Use normal battery
Your remote control use AA batteries which are not included in this package. You also can use rechargeable battery in your remote. Please make sure that rechargeable batteries are charged fully according to instructions of manufacturers. If you use rechargeable batteries in your remote, you should know that their power is consumed quickly compared with other alkaline batteries.

- !** Note: When your remote-control's batteries voltage reaches low levels (red light flashes slowly), please stop running the truck immediately in order to avoid damage or injury due to signal loss.

READY FOR PLAY



INSTALL THE BATTERY PACK FOR YOUR MODEL

Your truck comes with an included 7.4V Lipo Rechargeable Battery pack. Please install the battery according to the following steps:

1. Remove the monster's cover.
2. Remove the buckle that holds the battery cover.
3. Place the battery in the designated compartment and make sure the wires are positioned towards the front of the car.
4. Replace the battery cover, re-install the buckle and make sure the battery wire is not being pinched.



WARNINGS: LiPo batteries are only suitable for advanced users who have been aware of battery risks. It is not recommended that children below 14 years old operate LiPo batteries with direction of experienced adults. Please strictly obey directions from battery manufacturers and charger manufacturers charge, and it is important for you and users of this product to use and store LiPo batteries. Be sure your safety and understand how to use LiPo battery. Please notice that our company has no obligations to install batteries of the model, therefore, we will assume liability of any special, non-direct, attached or indirect loss caused by using LiPo battery.

NOTE OF REMOTE OPERATION

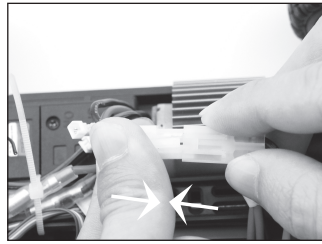
This 2.4G remote is equipped with directional antenna.

In order to obtain maximum distance, please hold the remote vertically towards the model.

PAIRING



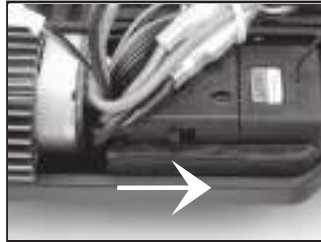
1. Install the battery into the truck and secure battery strap to post using clip.



2. Connect the battery.



3. Switch remote control on.



4. Switch Truck on.

5. Make sure you switch the truck on within 20 seconds of switching on the remote-control.

If you are using more than 1 truck then In order to avoid signal interference, always pair 1 truck at a time. Continue to pair a second truck only after pairing is completed.



2.4GHZ REMOTE

REMOTE CONTROLLER

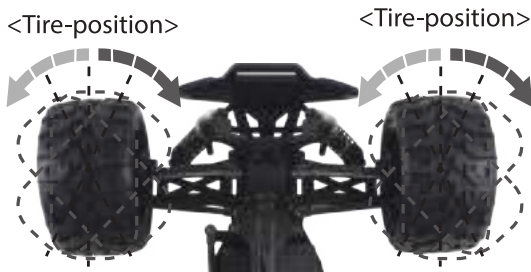


REMOTE LED CODES

LED color/pattern	Name	Solution
Solid red light	Normal driving pattern	Please refer to information about how to use remote control on page 9.
Slow flashing red light (on at 0.5s/off at 0.5s)	Low power	Replace batteries in the remote. See page 6 for more info.
Fast flashing red light (on at 0.125s/off at 0.125s)	Pairing failed/error	Please turn the remote system off and restart in order to reset the receiver. Please check if the battery level is sufficient or whether the antenna has been damaged.

CONTROLLING THE MONSTER TRUCK

STEERING TRIM



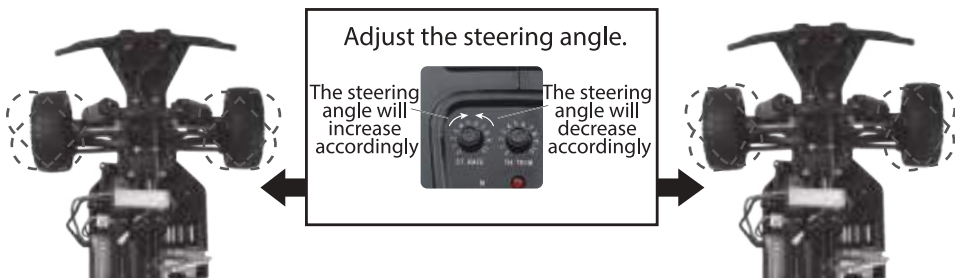
- If the truck tracks right (when viewed from behind), rotate the ST.TRIM knob slightly left.
- If the truck tracks left (when viewed from behind), rotate the ST.TRIM knob slightly right.
- Check that the servo saver screw is fully tightened to ensure that your truck tracks straight.

STEERING DUAL RATE

If you need to limit the angle of steering your truck has, rotate the "ST.RATE" knob counterclockwise. For sharper steering angle, rotate the knob clockwise.

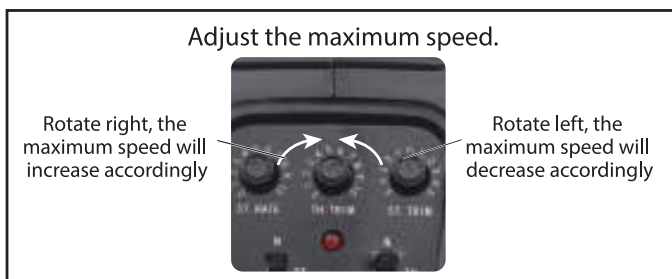
<If the steering angle increases>

<The steering angle will decrease>



THROTTLE DUAL RATE

In order to limit the maximum speed of your truck, rotate the "TH.TRIM" knob counterclockwise. For higher top speeds, rotate the knob clockwise.



OPERATING YOUR TRUCK

N level: Pull the trigger to allow the car to advance, while reverse the trigger to draw back the car.

R level: Pull the trigger to draw back the car. Reverse the trigger to allow the car to advance.



N level: Rotate knob left, the car turns left and Rotate knob right, the car turns right.

R level: Rotate knob left, the car turns right and Rotate knob right, the car turns left.

DRIVING YOUR TRUCK

PAIR YOUR TRUCK TO THE REMOTE CONTROL. SEE PAGE 8 FOR PAIRING INSTRUCTIONS.

- Pull the throttle towards your body softly and the truck will start moving forward. The harder you pull the faster the truck will go.
- To brake, push the throttle away from your body. To drive in reverse, push again.
- To stop slowly just let go of the throttle.
- When the battery reach low voltage, the truck will stop. The truck is equipped with LVC to protect the battery.



BEFORE RECHARGING

- Before charging the battery be sure it has cooled off from last use.

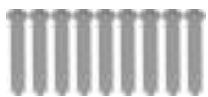
TRUCK MAINTENANCE

Your model needs to be repaired in time to ensure its optimal operational state. High attention should be paid to following steps. Check whether the car has obvious damage or wearing. For example:

1. Check whether it has broken, bent or damaged parts;
2. Check whether wheel hub and steering are installed in place;
3. Check whether it has worn wires or connecting rod with loose connection;
4. Check receiver and remote, and installation of electronic speed controller;
5. Check wheels for proper tightness;
6. Check remote system, especially battery capacity;
7. Check car body and suspension for loose screws;
8. Check tightness of all components;

PARTS LIST

P88001



φ 2.3x15 Round head screw

P88002



φ 1.8x14 Round head screw

P88003



φ 2.3x6 Round head screw

P88004



φ 2.3x8 Round head screw

P88005



φ 2.3x8 Flat head screws

P88006



M2.5x6 Flat head screws

P88007

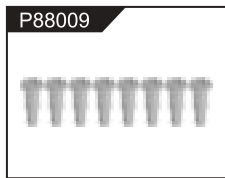


φ 2.3x10 Round head screw

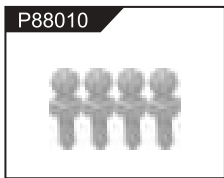
P88008



φ 2.3x10 Cup head screw



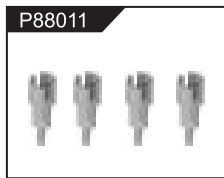
Φ 2.3x10Step screw



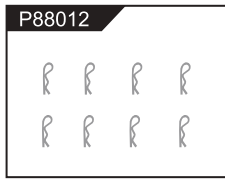
Φ 4.5Ball head screw



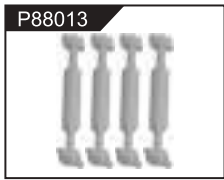
Φ Ball Head Screw
(Update Parts)



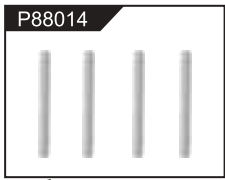
Φ 6 wheel cup shaft



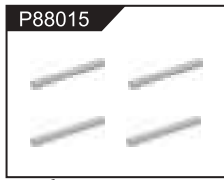
Φ 1 R type bolt



Wheel drive shaft



Φ 2x39Rocker shaft



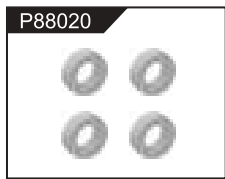
Φ 2x20Wheel shaft



Φ 8x12x3.5 Oil bearing



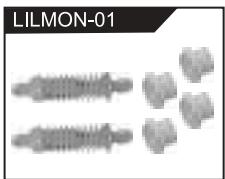
Φ 6x10x3 Oil bearing



Φ 4x8x3 Ball bearing



M3 Anti slip nut



Shock absorption assembly



Damping Oil



Six corner sets (shaft)



Steering Tie Rod
(Update Parts)



Damping connecting rod



Drive shaft assembly



Drive shaft
assembly-beVel gear



Steering linkage assembly



Differential assembly



Vehicle bttom



Transmission cover



Steering universal wheel

LILMON-11



Rear wheel seat

LILMON-12



Left and right swing arm

LILMON-13



Motor layering

LILMON-14



The battery strip

LILMON-15



Rudder compression

LILMON-16



FRONT/BACK
anti-collision frame

LILMON-18



Shore

LILMON-21



Tire

LILMON-23



Car shell

LILMON-28A



Water-proof ESC
(Upgrade Parts)

LILMON-29



Heat sink

LILMON-29A



Motor Heat Sink
(Large Size)

LILMON-30



9g five wire rudder
components

LILMON-31



7.4V 850mAh Li-Po battery

LILMON-32



1100mAh 7.4V Pouch cells

LILMON-33



7.4V Li-Po battery
balance charger

LILMON-34



380 Motor

LILMON-34A



High-speed motor
(Update Parts)

LILMON-34B



Motor 14 Gears

LILMON-34C



Motor 17 Gears (Update Parts)

LILMON-37



Transmitter

LILMON-38



Socket Wrench

LILMON-39



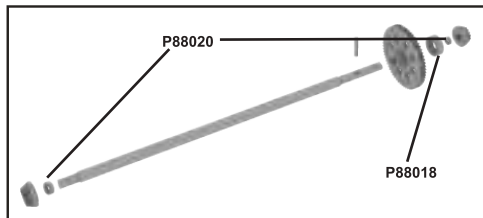
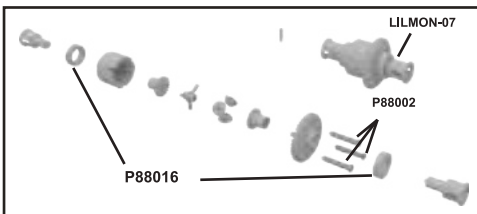
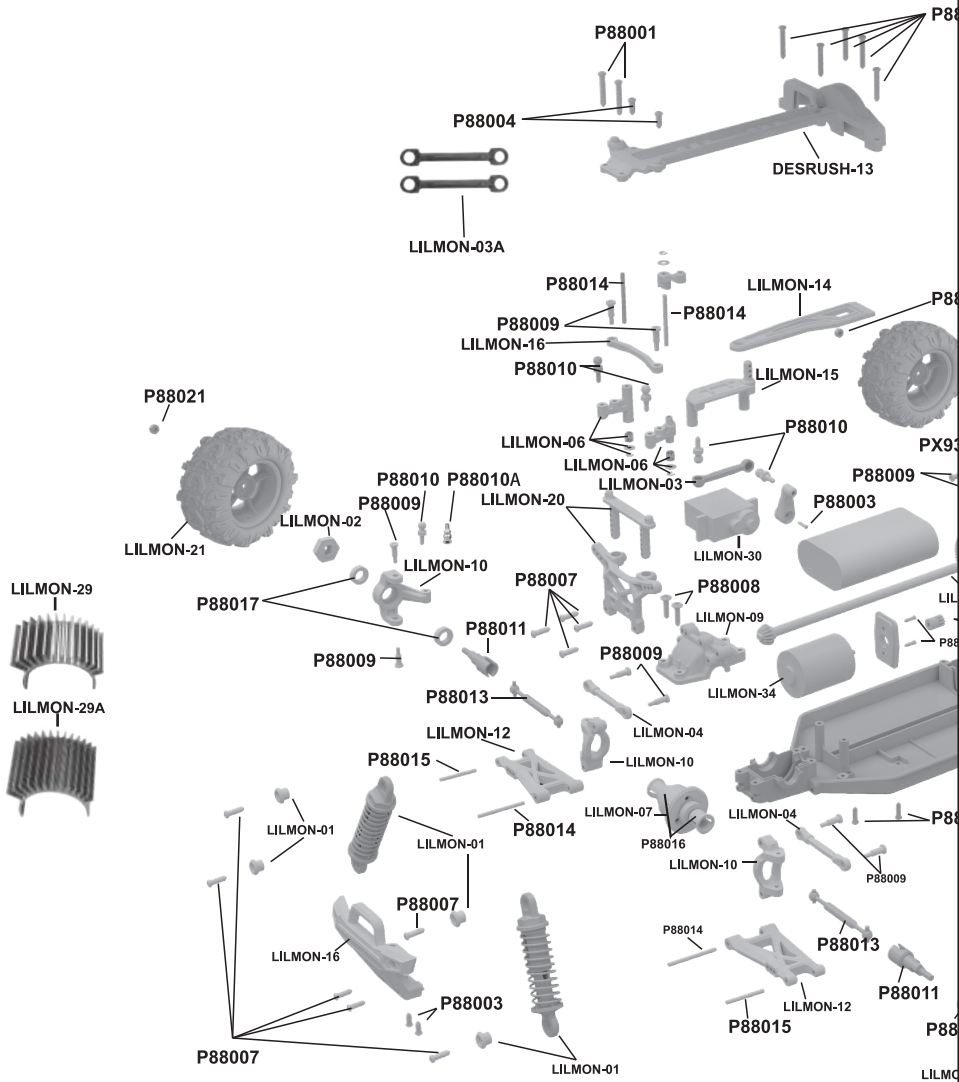
3MM Crosstip Screwdrivers

LILMON-40

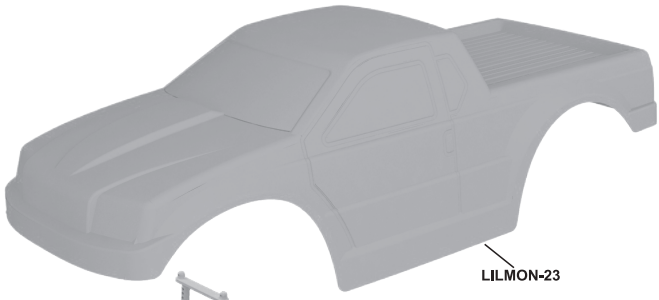


2MM Hexagon Wrench

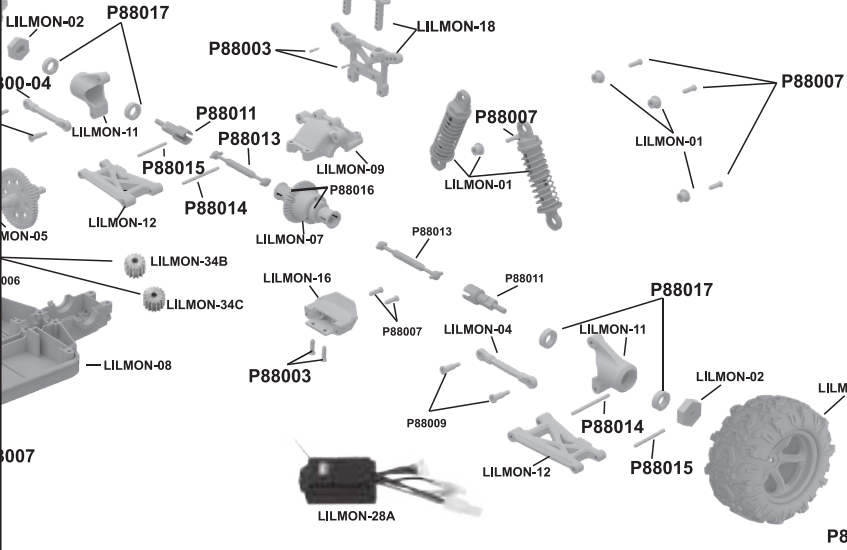
TRUCK PARTS DIAGRAM



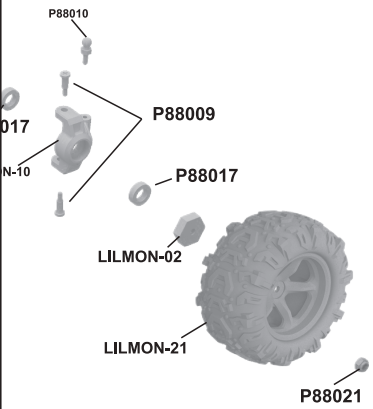
001



021

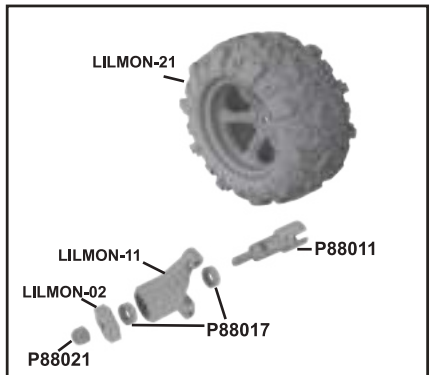


007



017

N-10





We believe that you should make the most out of your R/C vehicle. If you are ever in need of advice, service or parts, please visit our website for a list of our retailers and service centers.

WWW.RCPRO.CA