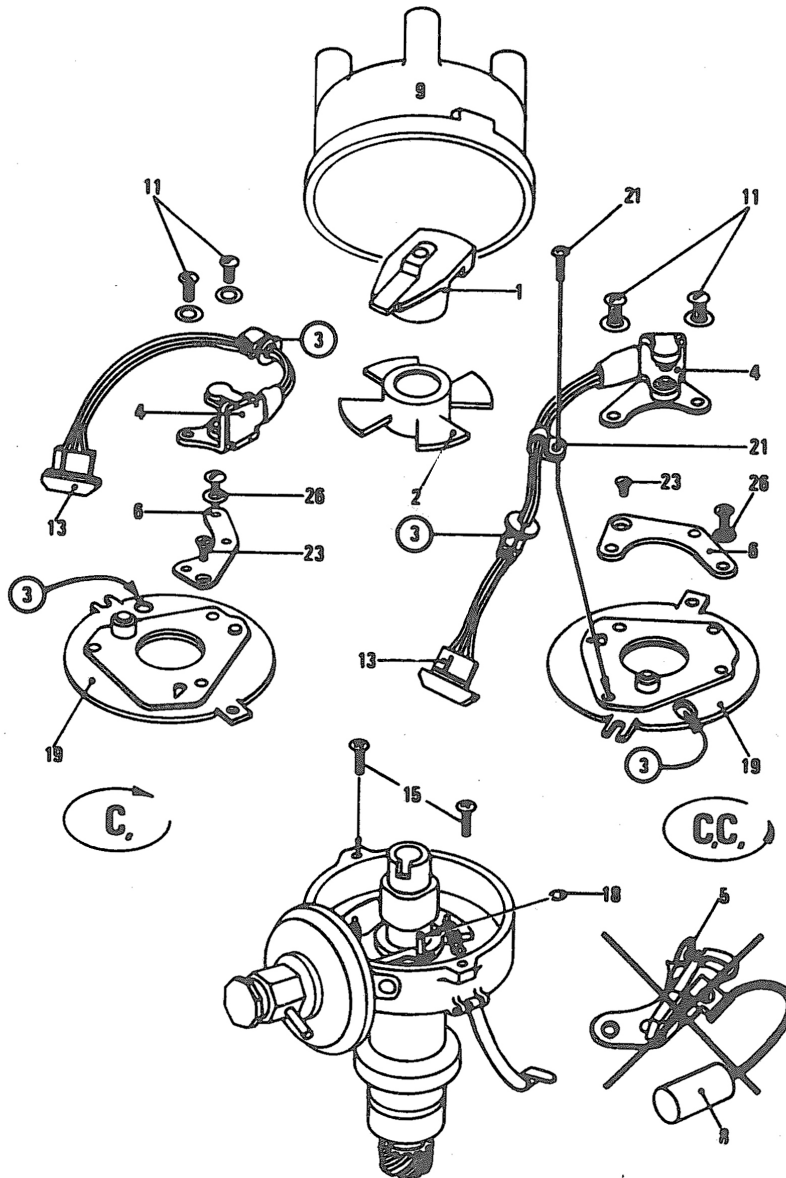
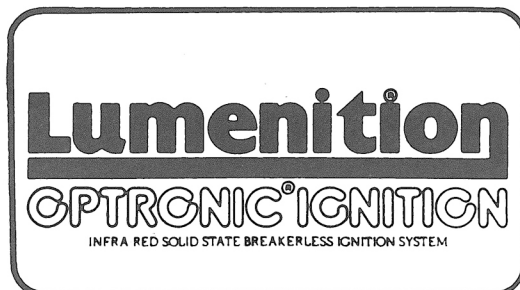


FK.9

Ford/Motorcraft Distributor with Black Cap
Inline 4 Cylinder O.H.C. V4 & V6 Engines



90079



A BRITISH INVENTION

Lumenition

Division of **Autocar** Equipment Ltd
77-85 NEWINGTON CAUSEWAY
LONDON SE1 6BJ. ENGLAND

Patent Nos. 1219833, 1252324, 1252559, 1279385, 1330453,
1410782, 1417857, 1420814, 1437770.

® Registered Trade Mark.

**MOTORCRAFT DISTRIBUTORS
FORD/AUTOLITE**

Disconnect: *Battery Negative Terminal*
Remove: Distributor Cap (9)
Rotor (1)
Contact Breaker (5)
Condenser (8)

INSTALLATION OF OPTICAL SWITCH (4)

- 1 Remove base plate (19) by removing Pozi screws (15) and small circlip (18). Keep screws and circlip safe for reassembly.
- 2 Assemble adaptor plate (6) to distributor base plate (19) locating into original contact breaker fixing holes using counter-sunk screw (26) & cheesehead screw & washer (23) supplied.
- 3 Assemble optical switch (4) onto adaptor plate (6) using screws and washers (11) supplied.
- 4 Adjust wire length between grommet (3) and optical switch (4) to allow for vacuum advance movement once the grommet (3) is fitted as in paragraph 5.
- 5 Feed optical switch wires through exit slot in distributor base plate (19) and locate grommet (3) into slot ensuring grommet flange is seated correctly.
- 6 Reassemble distributor base plate (19) using original screws (15) and small circlip (18).
- 7 Fit chopper (2) over cam making sure that cam lobes fit between wide spaced ribs in chopper bore. (4 cylinders)
- 8 Check optical switch wires (4) are clear of the revolving chopper (2).
- 9 **FOR ANTI CLOCK ROTATION ONLY.** Use 'P' clip and screw (21) supplied securing to condenser fixing hole to hold optical switch wires (4) away from chopper.
- 10 Fit optical switch wires into red connector (13) until tags 'click' into position. Ensure wire colours correspond with power module connector.

1 Red
2 Black
3 Blue

To remove terminals use small probe to close tags and withdraw wires. **DO NOT CUT WIRES.**

- 11 Refit rotor (1) and distributor cap (9).
- 12 Refit battery negative terminal and check ignition timing to manufacturer's specification when complete system is fitted.