

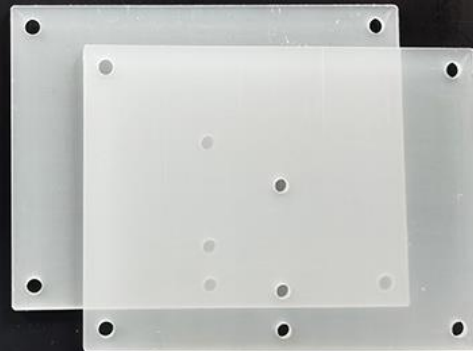
unpacking guide

This product includes:

mother board (box A) 、 power control unit (box B) 、
leds (12) 、 accessory bag (advertisement nail *4、 line
pipe*1、 pieces of adhesive tapes、 AA battery box*1、
connection line*1) 、 remote control
bonus --- double sided postcard *1、 acrylic board *2

The basic model doesn't include music effect;

The music function of the music model is integrated in the box B.



Some remote controls have a protective film that can be removed

There is insulation under the remote control, remove it before use



there is a protective film on Acrylic plate surface, remember to tear before use

Remote control Function description



lighting part (top half)

LIGHT ON/OFF: turn on/off the leds

SHOW TIME: auto play 12 modes(1-12)

SPECIAL: 8 special modes(all leds are steady on)

TURN: adjust the flow direction of lighting effects

1-12modes:

1 flash(random) 6 double running 11 bum steady

2 breath(randon) 7 stack (head)

3 wave 8 flow 2 12 bum steady

4 flow 9 flow3 (whoke body)

5 marquee 10 whole breath

BRIGHTNESS + : brightness adjustment

SPEED + : speed adjustment

MATCH: Long press can make the lamp group only

recognize the command of the current remote control

CANCEL MATCH: long press again can be cancel match

with the lamp group, so that the lamp group receives all

remote control instructions of this series

details of match and cancel match (Important)

If you have two sets of this products, use the matching function to make the current energized lamp group only receive the command of the current remote control.

For example, there are led sets A and B, remote control 1 and remote control 2.

Open A, long press the match of remote control 1, you will see A flashing, after which A only recognizes the command of remote control 1. Turn off the power box switch of A and turn on B. Since B is not match, both remote control 1 and remote control 2 can be identified by B.

Long press the matching key of remote control 2, the B flashes, and then theB only recognizes the command of remote control 2.

Can achieve that A and remote control 1, B and remote control 2 matching, and don't interface each other.

Note that long pressing the match key will match all the led sets which opened, so when matching, power off the other led set(s).

music part (bottom half)

Supported formats : MP3 WMA WAV

MUSIC ON/OFF : turn on /off the music

▶||: Play/Pause

⏮▶▶: Last song/next song

MODE : Switch bluetooth mode /TF card mode

VOL-+ : volume adjustment

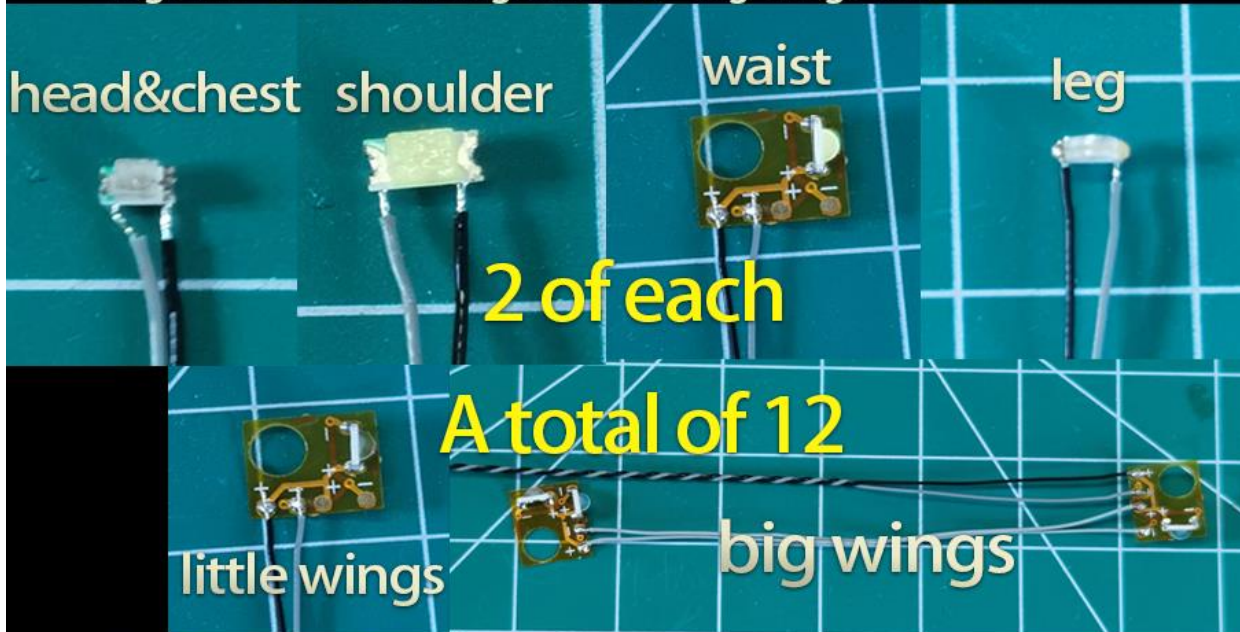
1-8 : One-click song selection in TF card mode
(the first 8 songs entered)

Tip: it is recommended to use high-quality audio sources to achieve better external playback effect.

lighting test

Please refer to wechat official account and B station video for instructions (Kosmos 科技)

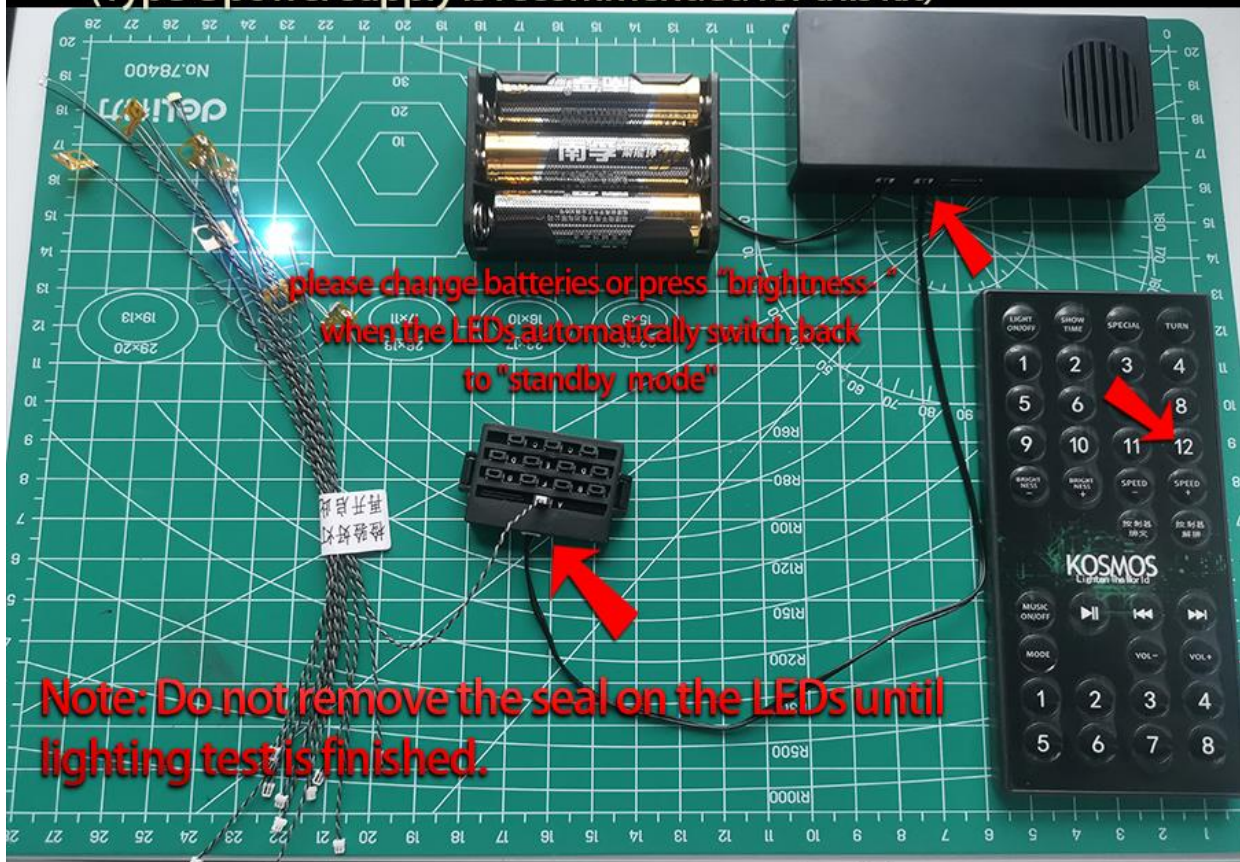
1 Check whether all parts of the LED units are correct:
head unit *1、chest unit *1、shoulder unit *2、waist unit *2、leg unit *2、Little wings unit *2、big wings unit *2



2 lighting test

Connect each component according to the picture below. Turn on the power. Use the remote control to turn on the lights, choose "12", check whether all sections are lighting up.

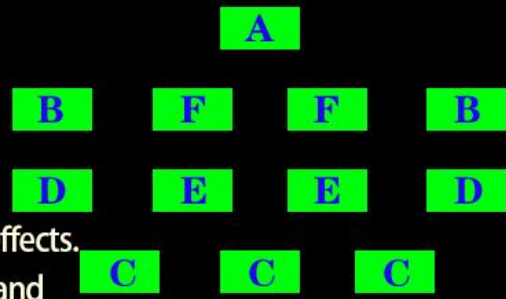
Power input: Type-C / AA battery (Type-C / AA Battery not included.)
(Type C power supply is recommended for this kit)



How to connect LEDs to mother board?

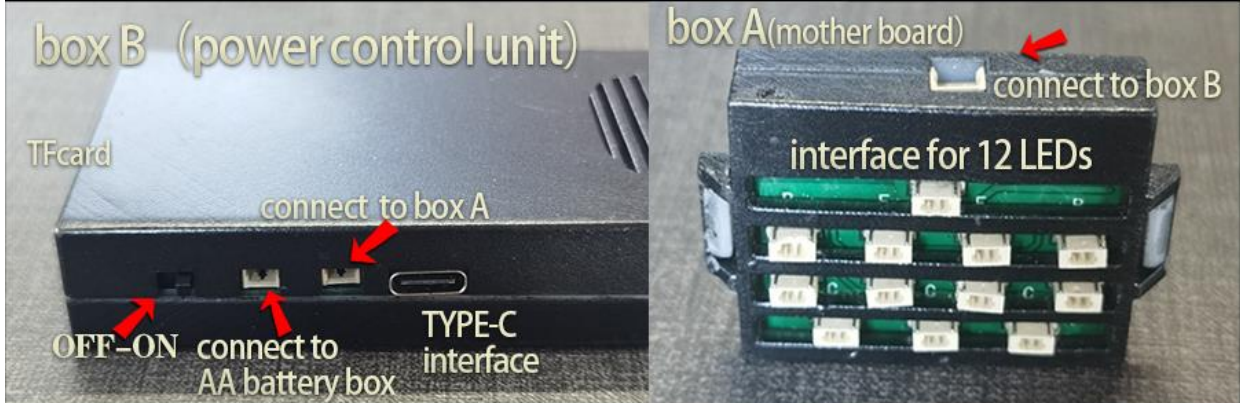
(recommendations are as follows:)

- A --- head
- B --- shoulder
- C --- chest & little wings
- D --- waist
- E --- leg
- F --- big wings

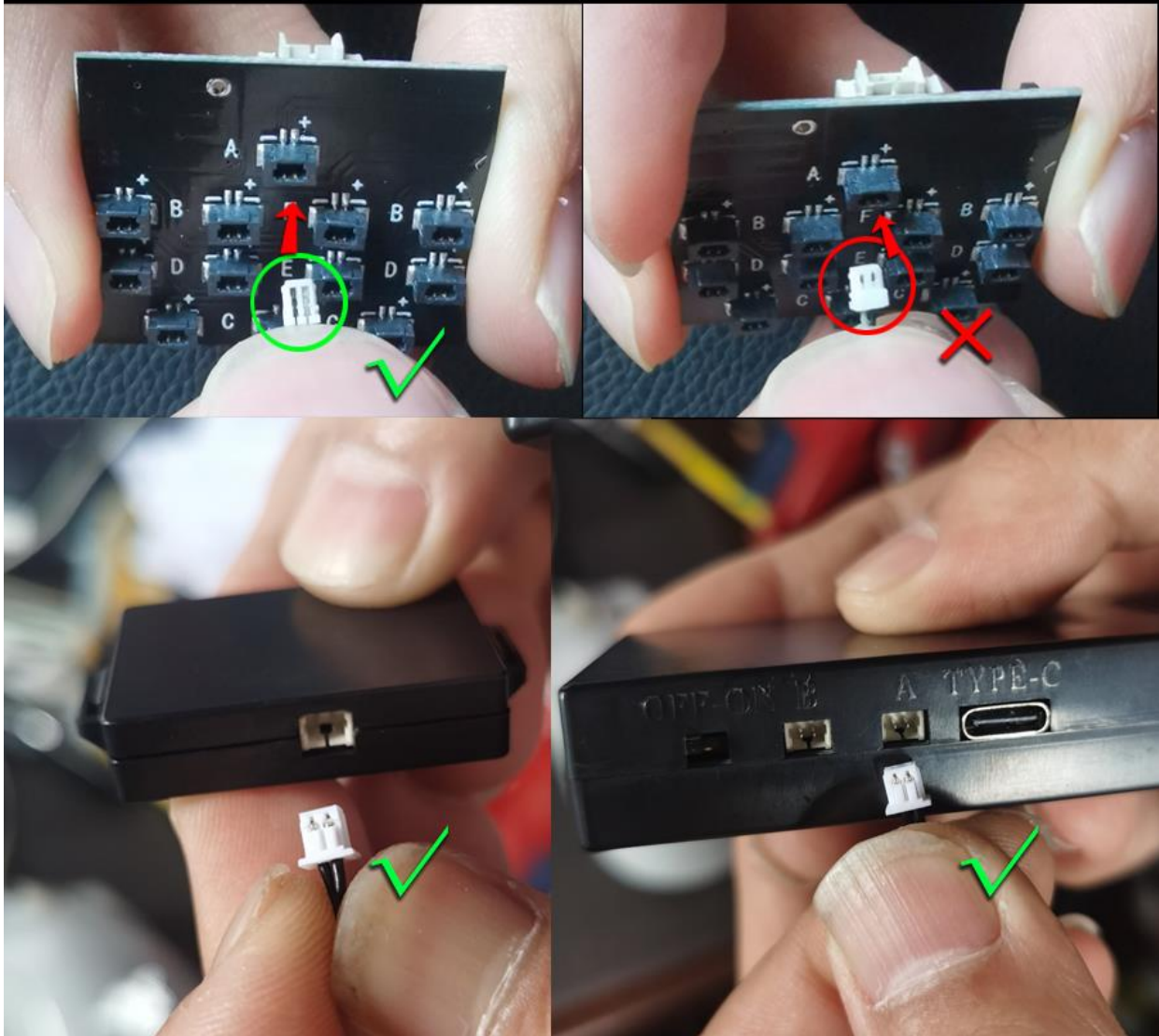


"A" is always stay lighting up among all lighting effects.

It is suggested that connect head led unit to "A", and how to connect other parts can be based on your preferences.



Distinguish the "male" and the "female" before plug in



Pay attention to the "male" and "female" of the plug, it may cause damage if you plug reversed

connection

各灯线连至A盒
connected all leds to box A

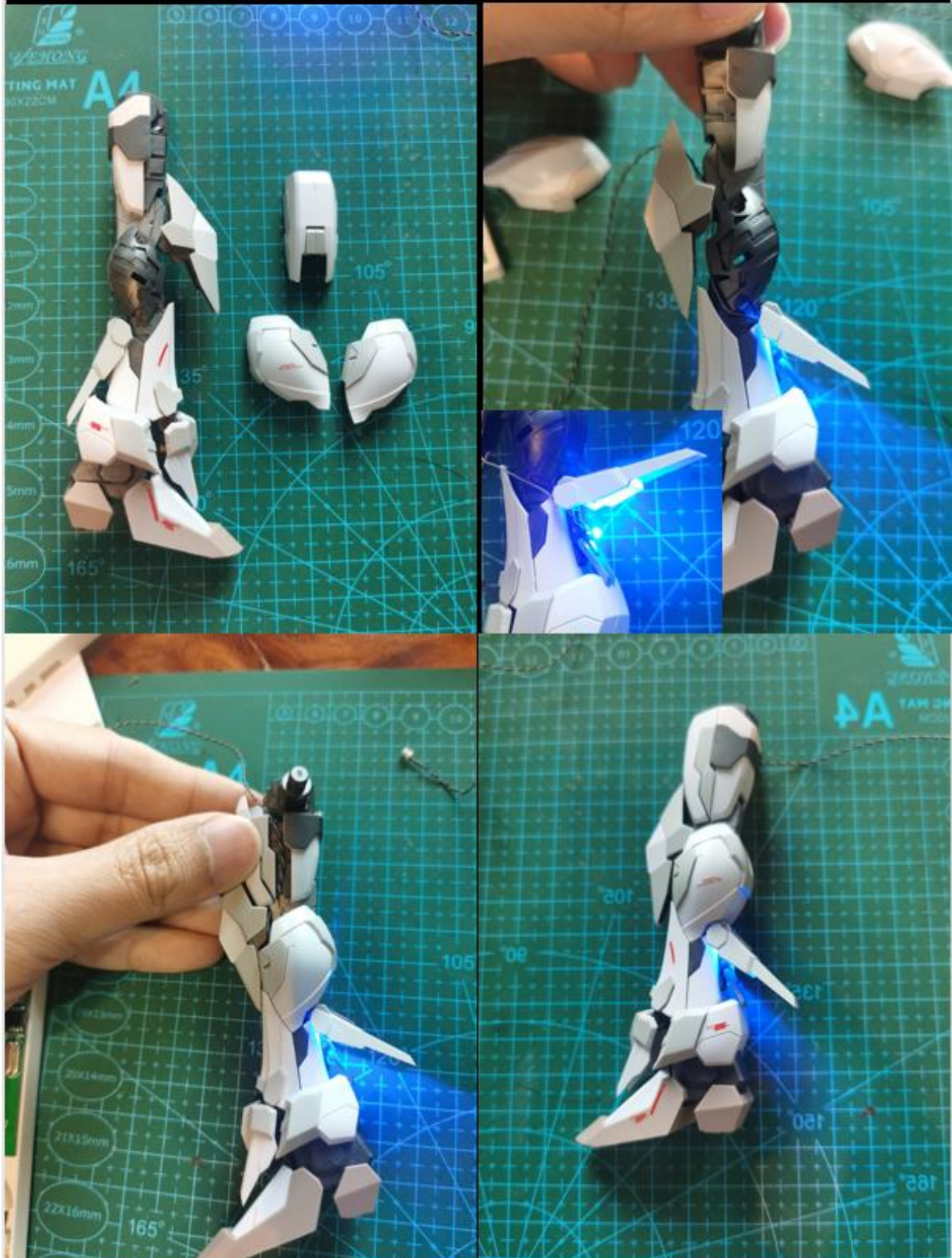
A盒与B盒相连
connected Box A to box B

电池盒/USB与B盒相连
connected AA battery box or usb to box B

Tip: you can unplug the connecting line which connect box A to box B when you posing and playing model.

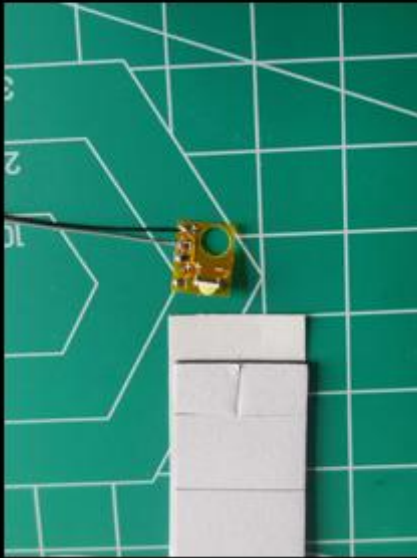
No need to connect the battery box when using USB power supply.

Step 1, assemble leg units



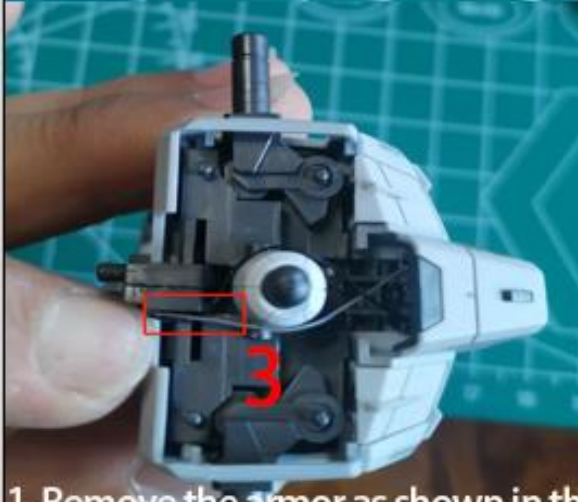
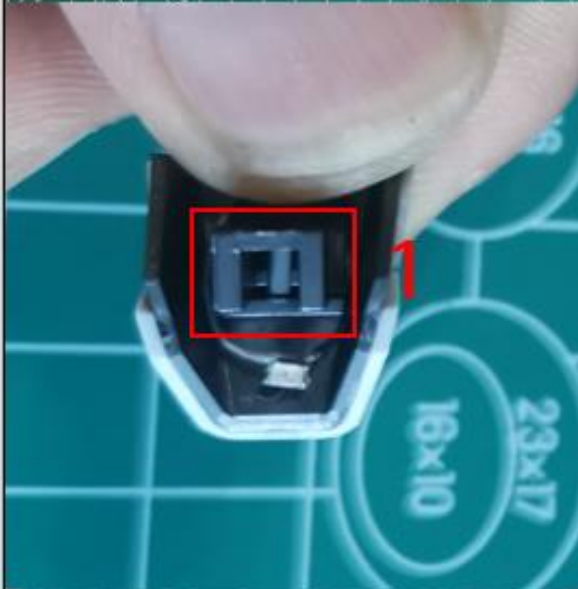
1. Remove the armor as shown in the figure
2. Hang the leg unit bead on the nozzle cover, paying attention to the position
3. Put the wire according to the picture, put the armor back
4. power on, and check the effect

Step 2, assemble waist units



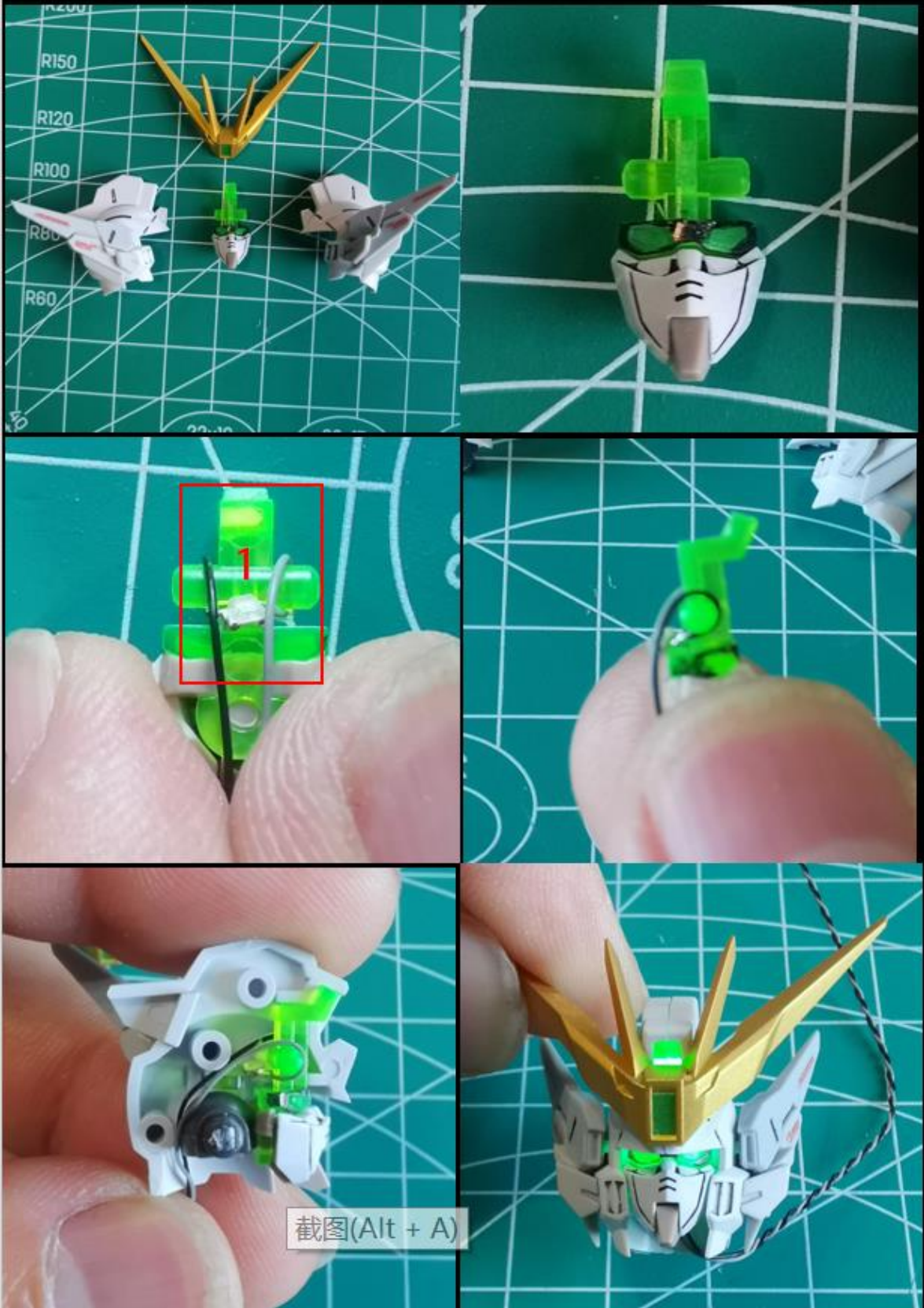
Stick the led units on the inside of the waist armor with stickers (cut to the required size), and place the wire as shown in picture

Step 3, assemble chest units



1. Remove the armor as shown in the figure
2. Twist the wire in the opposite direction to release the length, otherwise it will not be long enough
3. Put wire around part "1", and put the LED faced to the part "2"
4. Line routing exactly according to the picture position "3"
5. About part "4", dont' press too tight to advoid damage the wires

Step 4, assemble head units



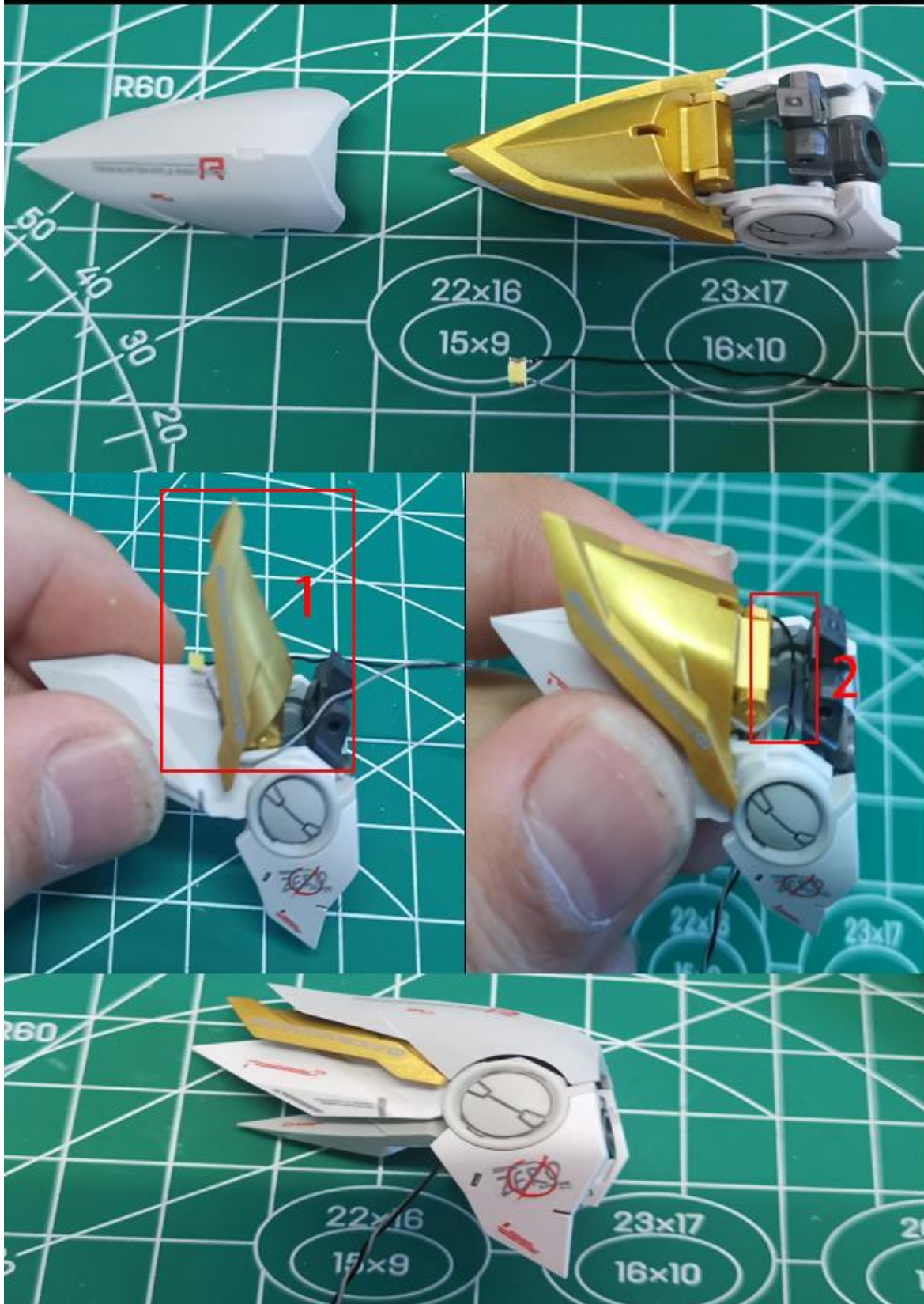
1-2. Remove the armor as shown in the picture. Do not attach any stickers on the head

3-4. Put the wire around the part "1", and place LED faced forward.

5. Assemble the parts as shown in the picture, with the LED facing backward. Pay attention to whether the wires are placed correct and do not press them.

6. Power on, and check effect

Step 5, assemble should units



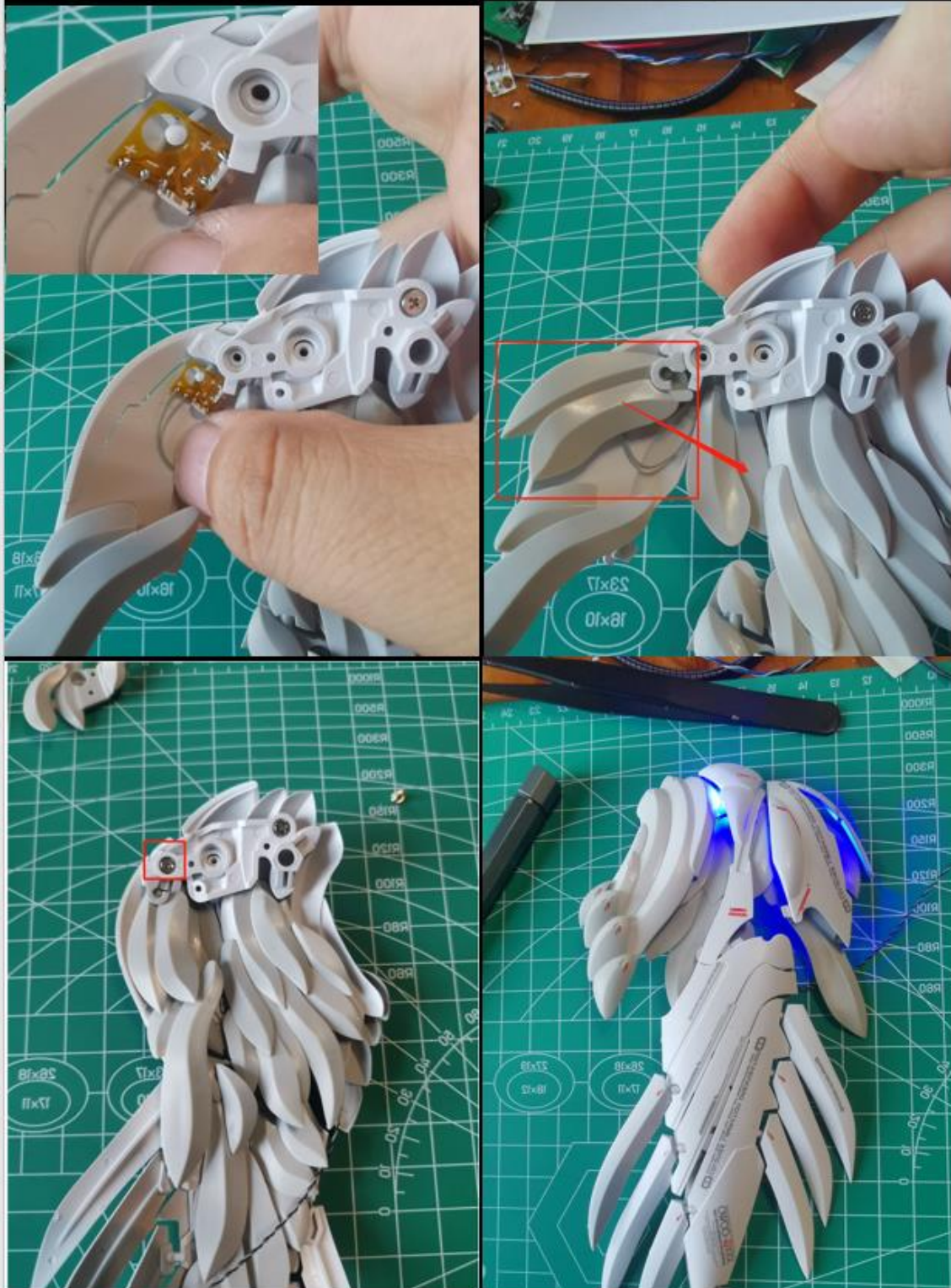
1. Remove the armor as shown in the picture and twist the wire in the opposite direction to release the length
2. Put the wire around part "1"
3. Put the wire down through the part "2"
4. Power on ,and check the effect

Step 6, assemble big wing units



1. Remove the outer armor as shown in the picture. (right wing)
- 2-3. Place the LED and wires as shown in the figure
4. Assemble the armor back

Step 6, assemble big wing units



5. Put the second LED as shown in the picture

6. Assemble the armor back, put it in the position as shown in the picture, and move to the left in the direction of the arrow to assemble the armor exactly

7. Tighten this screw first.(The middle screw is attached to the other part)

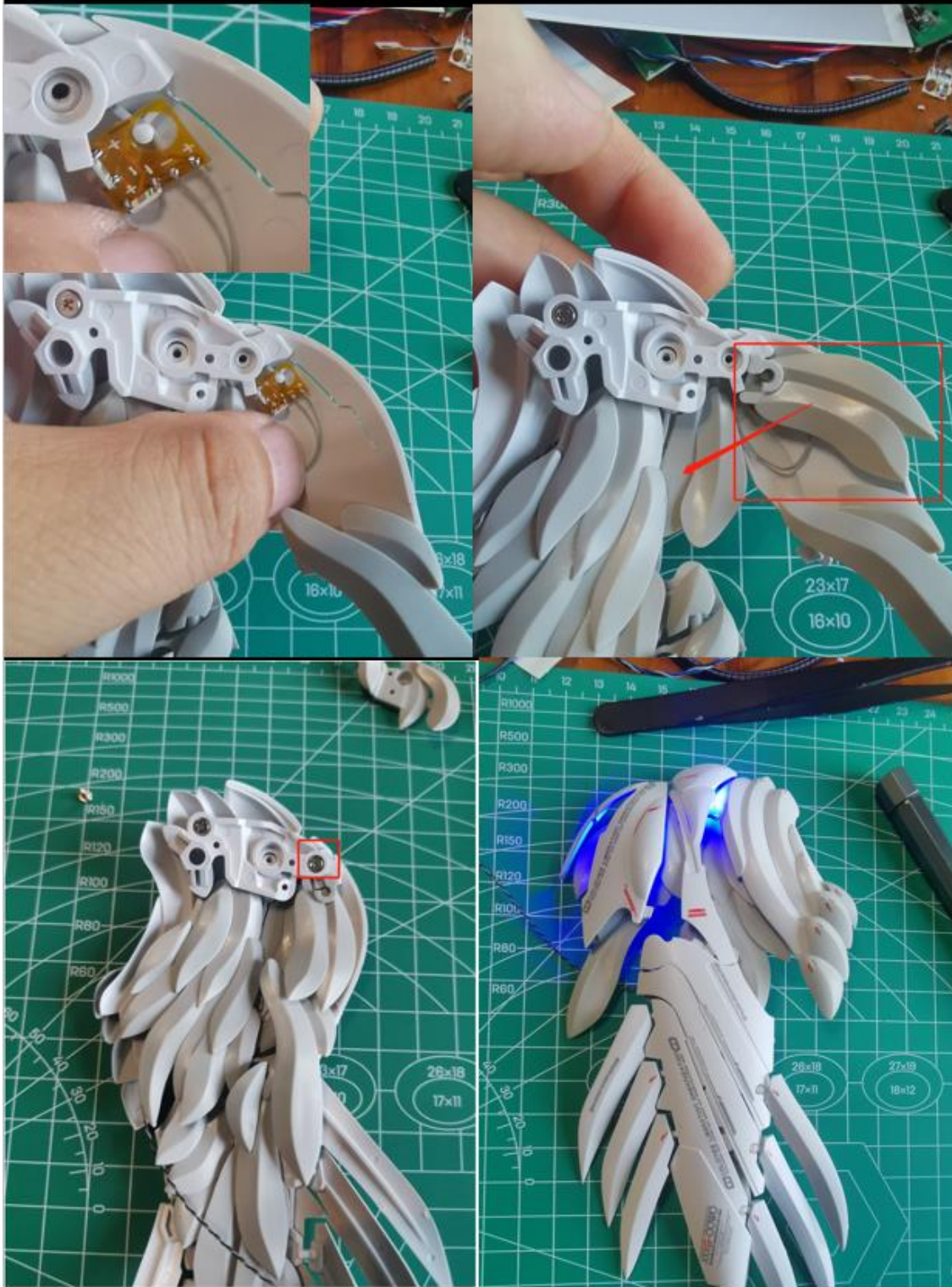
8. Power on ,and check effect

Step 6, assemble big wing units



1. Remove the armor as shown in the figure(left wing)
- 2-3. Place the LED and wires as shown in the picture.
3. Assemble the armor back.

Step 6, assemble big wing units



5. Put the second LED as shown in the picture

6. Assemble the armor back, put it in the position as shown in the picture, and move to the left in the direction of the arrow to assemble the armor exactly

7. Tighten this screw first.(The middle screw is attached to the other part)

8. Power on ,and check effect

Step 7, assemble little wing units



1. Remove the armor as shown in the picture and take out the LEDs (no need to distinguish left and right)
2. Place the LED and wires as shown in the picture, stick the LED inside on the place "1" with double-sided adhesive
3. Place the wires as shown in the picture
4. Assemble the armor back and power on ,check the effect

Step 8, assembly



1. Assemble all parts of the body, place the wires of head and chest as shown in the figure, and cross the wires of shoulder below the part "1" as shown in the picture
2. Assemble the part of backpack
3. Place the wires of waist and legs in the gap ("2"), and all wires can be concentrated at the back of waist
4. Assemble each wing and connect each wire to box A according to their positions. (If you are not sure about the position of the wires, you can turn on the power and judge by the position of the light on)

Step 8, assembly



1. Wrap all wires with a soft line pipe after fully connection as shown in the picture
- 2, You can cut off unnecessary wire pipe if you think it's a little long
- 3, Arrange the details of wires to make it beautiful
4. Effect picture